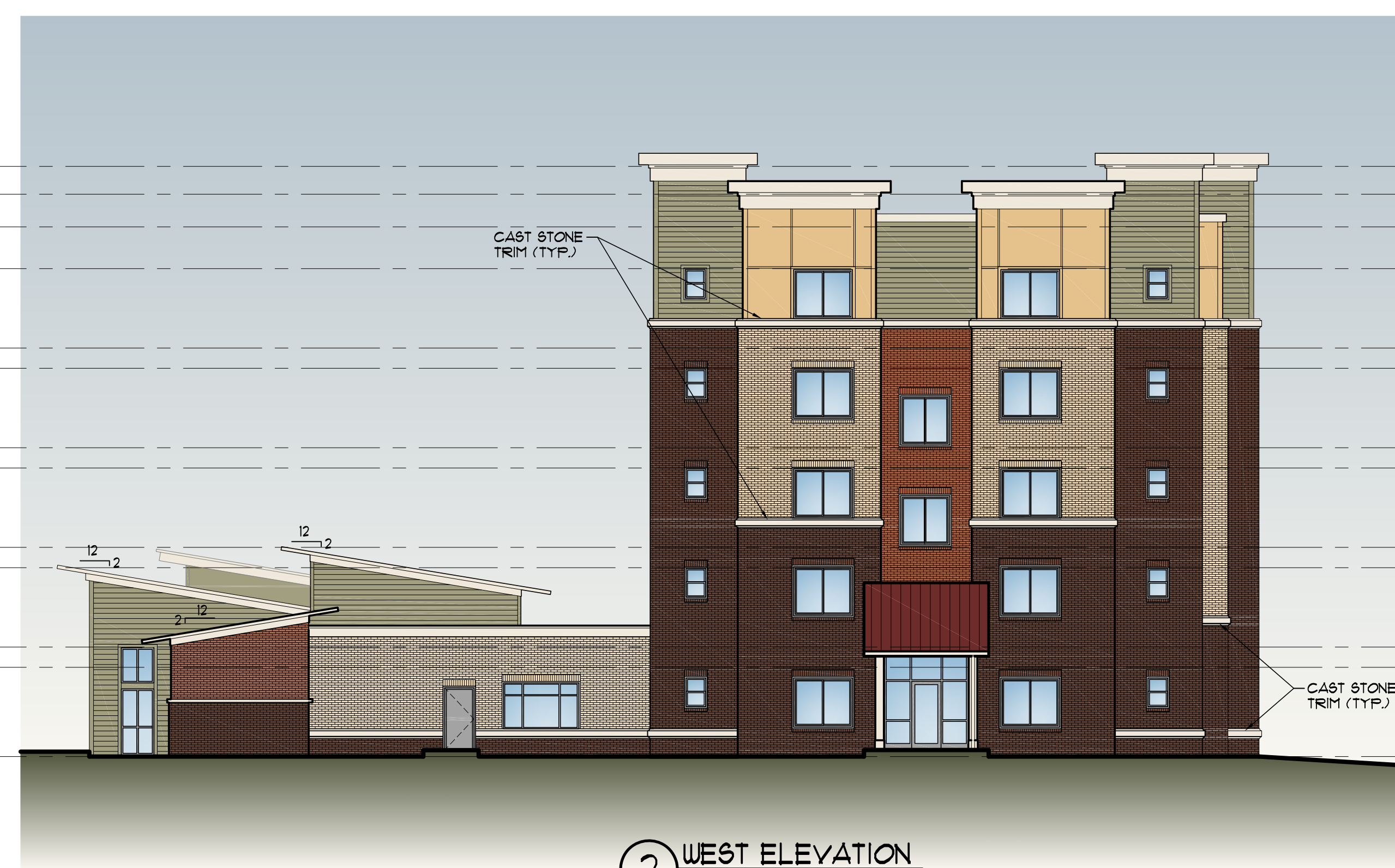


1 NORTH ELEVATION
SCALE: 3/32" = 1'-0"



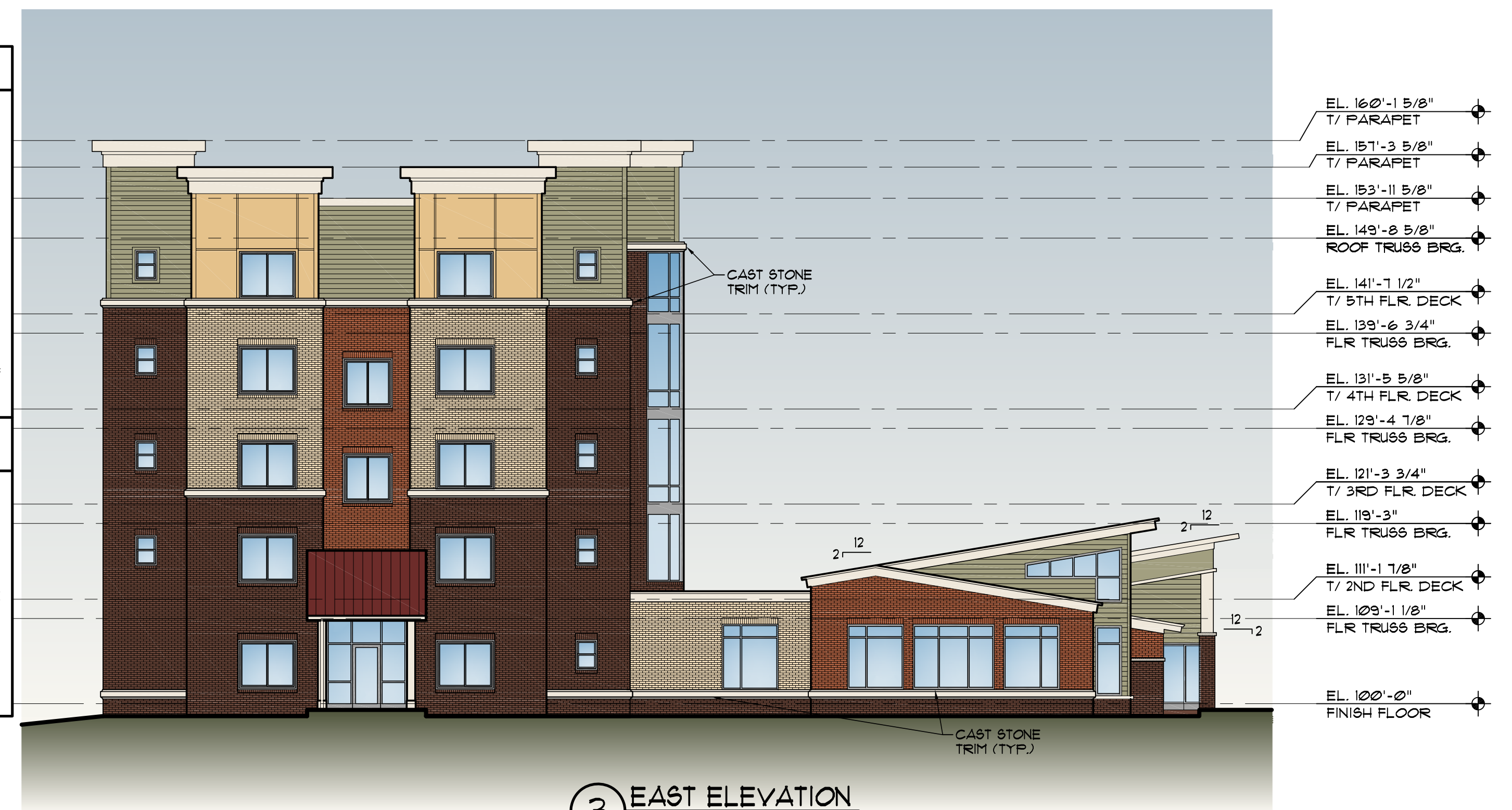
2 WEST ELEVATION
SCALE: 3/32" = 1'-0"

COLOR INDICATED REPRESENT A DESIGN STANDARD. EQUALS WILL BE REVIEWED.

MATERIAL KEY:

- FIBER CEMENT LAP SIDING GREEN 6PR0UT (SUT128)
- FIBER CEMENT BOARD AND BATTEN WHITE RAISIN (SUT685)
- LAKEWOOD BRICK 'A' - LIGHT BUFF
- LAKEWOOD BRICK 'B' - ITALIAN TAN T-4
- LAKEWOOD BRICK 'C' - FLUM
- STANDING SEAM METAL ROOF: BERRIDGE MFG CO. "COLONIAL RED"
- C.J. CONTROL JOINT EXP.JT. EXPANSION JOINT

NOTES:
BRICK HEADS AND BILLS TO MATCH ADJACENT BRICK COLOR
FIBER CEMENT TRIMS TO MATCH ADJACENT FINISH
CAST STONE TRIM, CUSTOM CAST STONE COLOR "SANDSTONE"
EIFS GROUING: CREAMY (SUT102)
DOOR & WINDOW FRAMES: ANODIZED ALUMINUM



3 EAST ELEVATION
SCALE: 3/32" = 1'-0"



4 SOUTH ELEVATION
SCALE: 3/32" = 1'-0"

S:\wood Drawings\Hotel\PROPOSALS\MM and RI\Orland Park, IL 15101-16\Rendering\04-14-16 RI Colors Elevations.dwg, 4/15/2016 11:35:13 AM, Adobe PDF.pdf