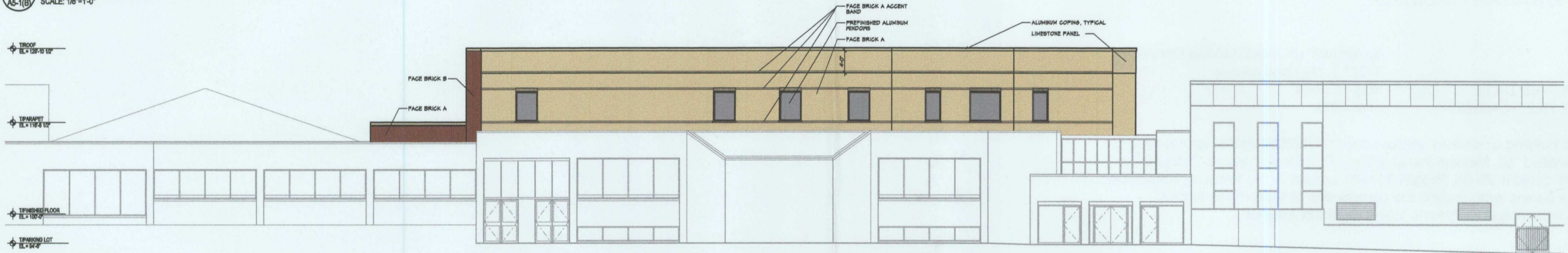
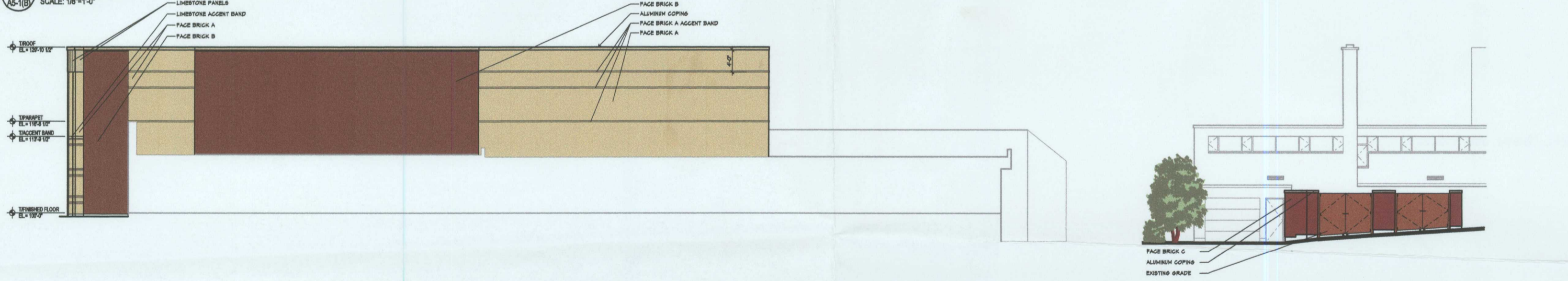


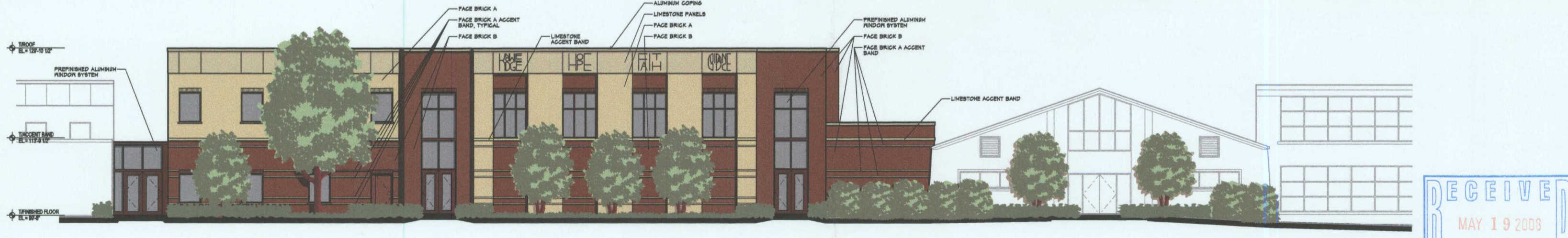
1 NORTH ELEVATION
A5-1(B) SCALE: 1/8"=1'-0"



2 EAST ELEVATION
A5-1(B) SCALE: 1/8"=1'-0"



3 SOUTH ELEVATION
A5-1(B) SCALE: 1/8"=1'-0"



5 WEST ELEVATION
A5-1(B) SCALE: 1/8"=1'-0"



4 TRASH ENCLOSURE - EAST ELEVATION
A5-1(A) SCALE: 1/8"=1'-0"

GENERAL NOTES

1. FACE BRICK A MATCHES THE EXISTING COMMONS BRICK IN COLOR. TO BE MODULAR, RUNNING BOND.
2. FACE BRICK B MATCHES THE EXISTING CHURCH BRICK IN COLOR. TO BE MODULAR, RUNNING BOND.
3. LIMESTONE TO BE BUFF, SMOOTH.
4. ALL FINISHES TO BE PREFINISHED ALUMINUM.



newmanArchitecture
1730 Park Street, Suite 115, Naperville, Illinois 60543-2611
(630) 430-1600 FAX (630) 430-1987 info@newmanarchitecture.com

Participating Consultants

BOARD APPROVED

CASE NO. 2008-0298

DATE 5/19/08

W/CONDITIONS

W/O CONDITIONS

Project Name:
CONSTRUCTION DOCUMENTS
ST. MICHAEL PARISH CENTER

14327 HIGHLAND AVENUE
ORLAND PARK, IL 60462

FOR
THE ARCHDIOCESE
OF CHICAGO

Architect's Certification:

License: Illinois Professional Design Firm
License No. 184-000542
Expires: 4/30/09
License: Illinois Registration No. _____
Expires: _____

Drawing Title:
EXTERIOR ELEVATIONS - OPTION B

Issue/Revision:

No.	Date	Description
-	10/17/07	Village Review



Project No.: 07001 Date: 04/23/08

A5-1(B)