



1414 UNDERWOOD AVE.
WAUWATOSA, WI 53213
414-431-3131 TEL
414-431-0521 FAX
WWW.AGARCH.COM

Architecture
Engineering
Planning

REVISIONS

THIS DRAWING, ITS DESIGN CONCEPT AND ITS DETAILS ARE THE SOLE PROPERTY OF AG ARCHITECTURE, INC. AND SHALL NOT BE COPIED IN ANY FORM OR MANNER WITHOUT WRITTEN AUTHORIZATION OF ITS DESIGNER/CREATOR

DRAWN BY
DRN
DATE
18 DEC 2009
PROJECT
070601
SHEET NO.

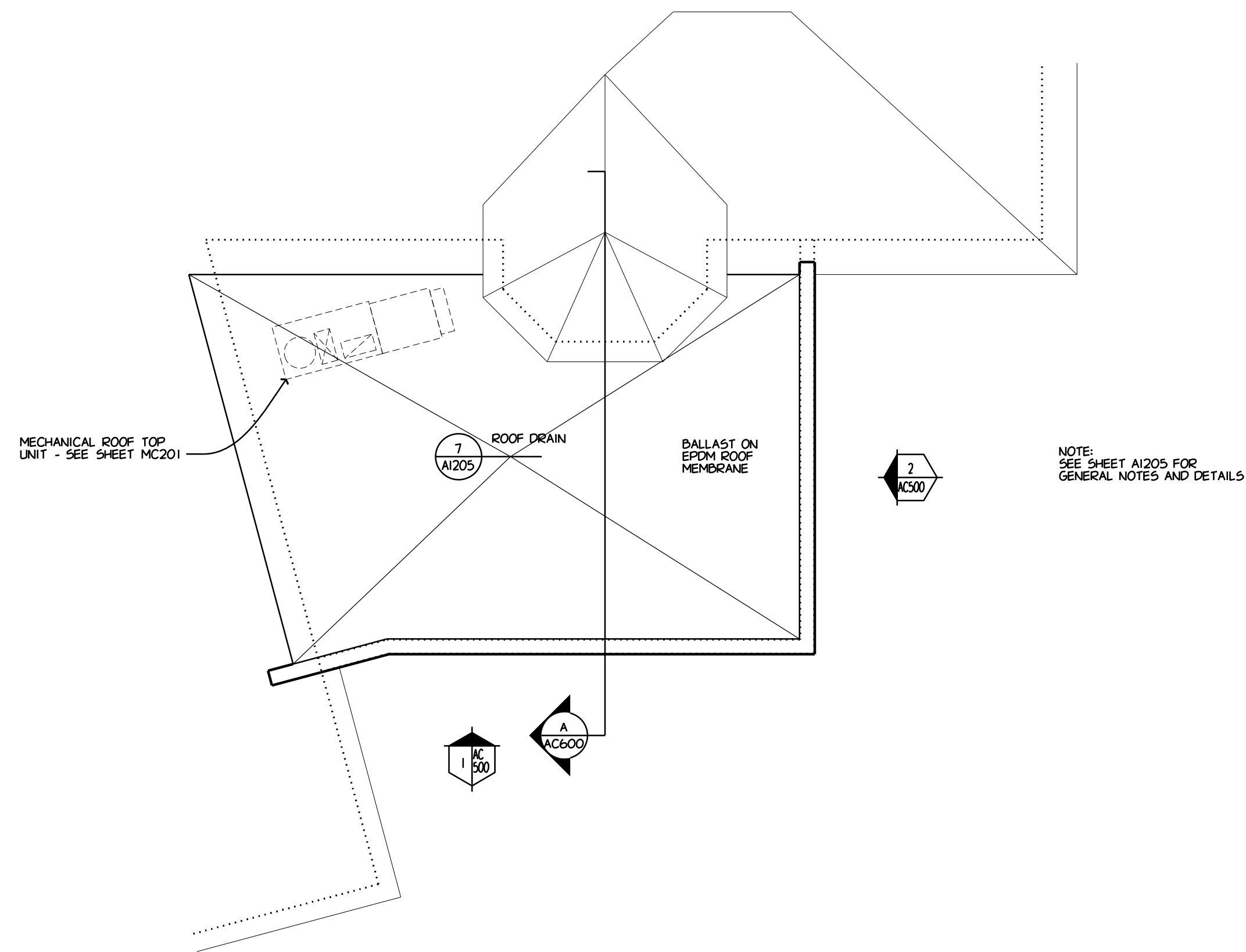
WINDOW & GLAZING SCHEDULE

MK	TYPE	OPENING (WxH)	GLAZING	REMARKS
⊙	-	- X -	5/8" INSUL.	

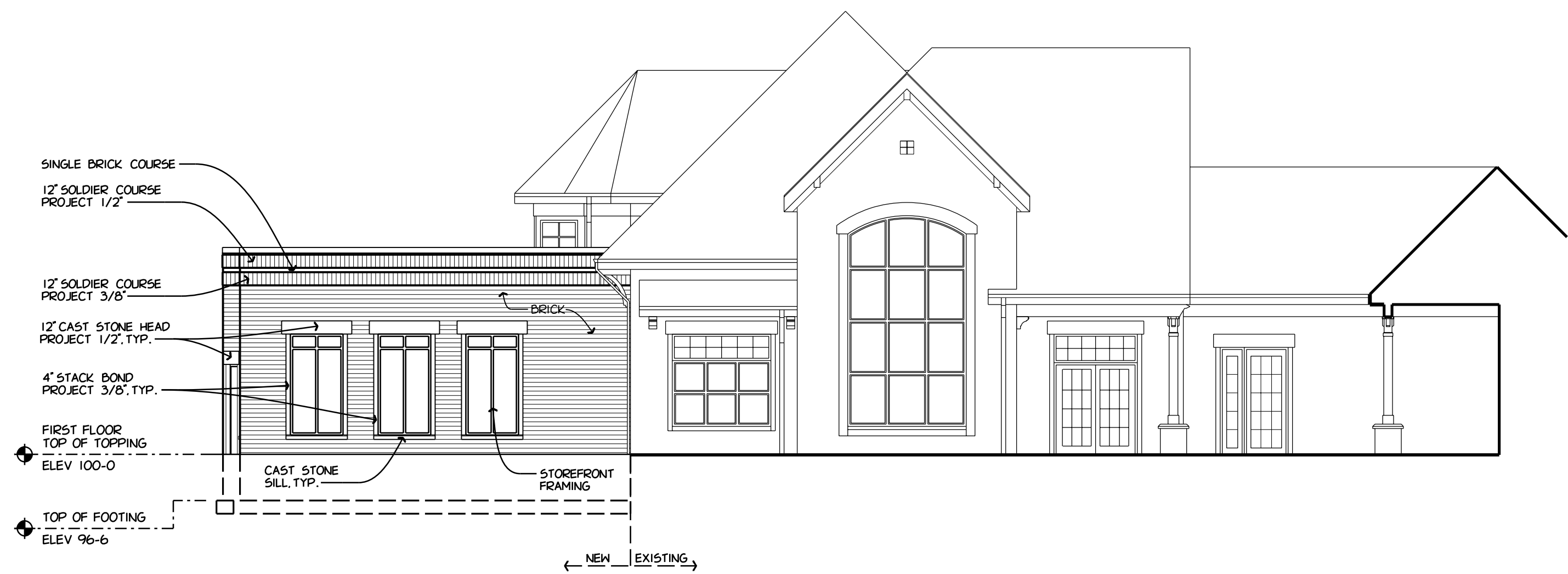
5' EXPOSURE SIDING LAP SIDING PER SECTION 07462
7' EXPOSURE SIDING SHINGLE SIDING PER SECTION 07462

GENERAL NOTES

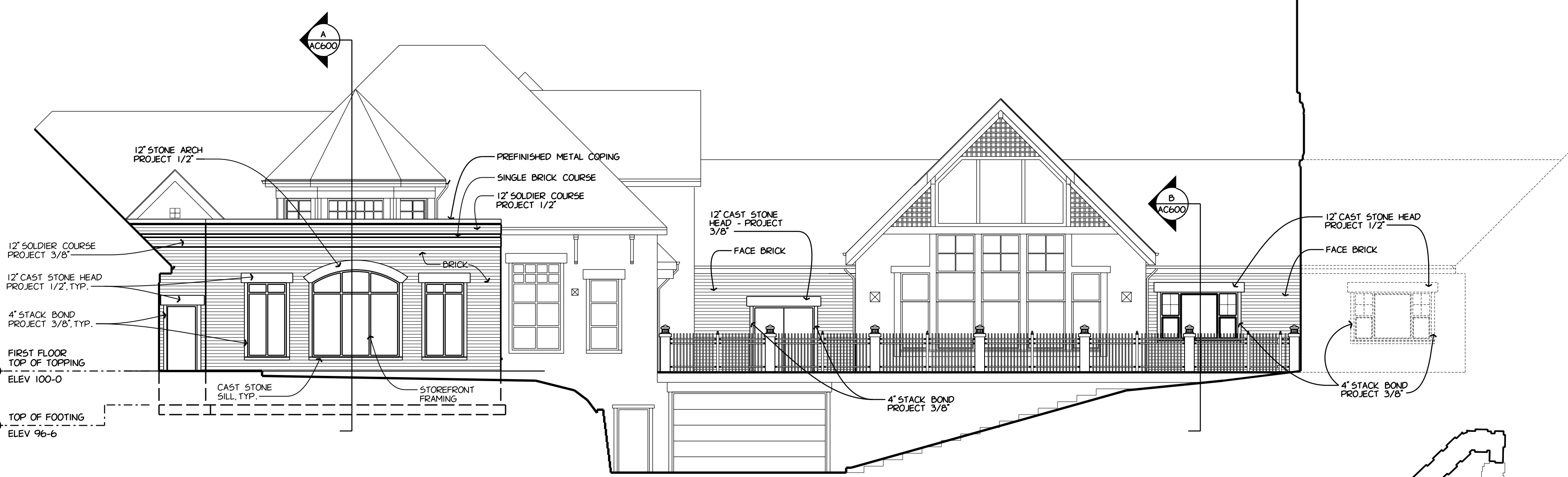
- PROVIDE SPLASH BLOCKS MADE WITH ROCKS AT ALL DOWNSPOUTS WHICH SPILL ONTO GRADE - MATCH EXISTING.
- 6" 1/2" CAST STONE SILL VERIFY HEIGHT WITH APPROVED WINDOW SHOP DRAWINGS
- ALL FIBER CEMENT TRIM TO BE PRIMED ALL SIDES.
- SEE SHEET A1500 FOR WINDOW SCHEDULE



PRIVATE DINING ROOF PLAN
1/8" = 1'-0"



ELEVATION
1/8" = 1'-0"



ELEVATION
1/8" = 1'-0"

