

CHANNEL LETTER SIGN SPECIFICATIONS : (Face Lighting, Raceway Mounted, Internal LED Lighting)

Channel Letters : Standard face lighting (plexi face design, fabricated aluminum pan letters, .090" backs, returns 5" x .063", welded construction, sealed seams, drain holes).

Finish : Letter exteriors primed and painted "Red".

Letter Faces : 3/16" Red translucent acrylic (#2793) finished with 1" (Red) Jovellite trimcap.

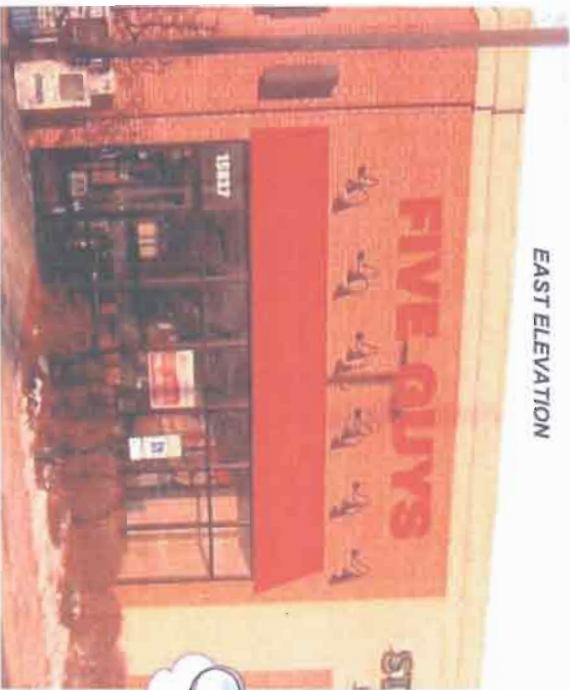
Raceway : Standard 8" tall x 8" deep, riveted aluminum, .063" skin, internal mounting brackets.

Raceway Finish : Raceway to be primed and painted to match building exterior (**T90**).

Illumination : Lettering to be lit internally using "Red" LED modules.

Electrical : 120 volts, UL Listed & Labeled, LED power supplies housed inside raceway.

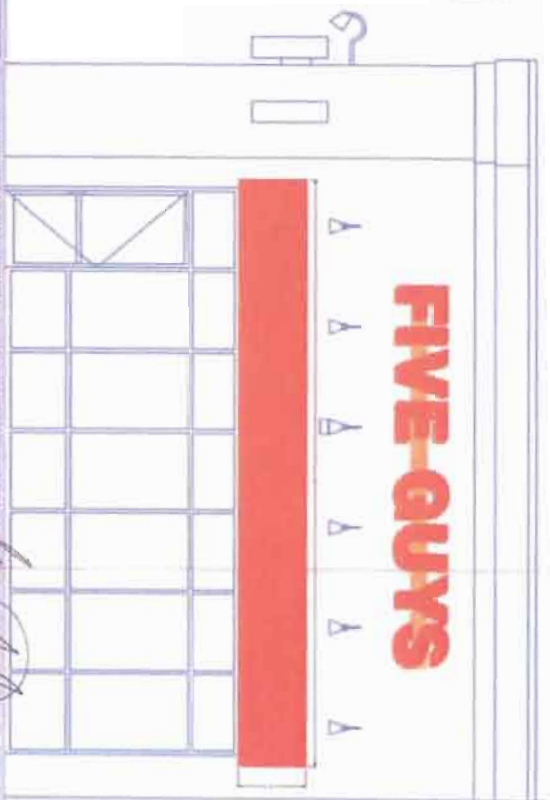
EAST ELEVATION



AWNING: Non illuminated vinyl awning, fabricated all aluminum tube frame.



VOLTAGE
 120 Volts
 277 Volts



1321 Venture Drive, Suite 1, Jolietville, WI 53146 Phone: 1-800-913-7997 Fax: 1-508-551-7852
 CLIENT: Five Guys SALESMAN: Matt Shied
 JOB SITE: 15825 S. LaGrange Rd, Orchard Park, IL ARTIST: Cory
 CUSTOMERS SIGNATURE: [Signature] DATE: 01/08/09
 DRAWING: 03776-01 1 of 1

ms

CHANNEL LETTER SIGN SPECIFICATIONS :
(Face Lighting, Raceway Mounted, Internal LED Lighting)

Channel Letters : Standard face lighting plexi face design, fabricated aluminum pan letters, .090" backs, returns 5" x .063" welded construction, sealed seams, drain holes.

Finish : Letter exterior primed and painted "Red".

Letter Faces : 3/16" Red translucent acrylic (#2793) finished with 1" (Red) Jewelle trimcap.

Raceway : Standard 8" tall x 8" deep, frosted aluminum, .063" skin, internal mounting brackets.

Raceway Finish : Raceway to be primed and painted to match building exterior (TBO).

Illumination : Lettering to be lit internally using "Red" LED modules.

Electrical : 120 volts, UL Listed & Labeled, LED power supplies housed inside raceway.

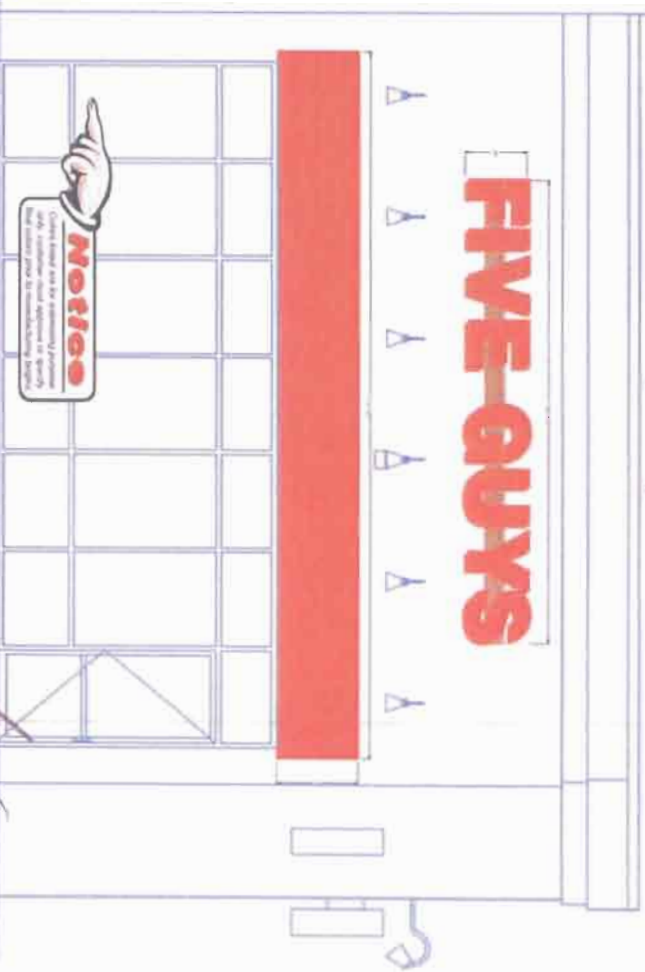
WEST ELEVATION



VOLTAGE
 120 Volts
 277 Volts



AWNING: Non illuminated vinyl awning, fabricated all aluminum frame



TMB Signs

© Copyright | Listed

286 SIONS INCORPORATED | 1931 Venture Drive, Suite 1, Jenkintown, WI 53546 | Phone: 1-800-843-7997 | Fax: 1-508-734-7807

CLIENT: Five Guys | SALESMAN: Matt Stried | ARTIST: Cory | DATE: 01/08/09 | DRAWING: 03776-02 | 1 of 1

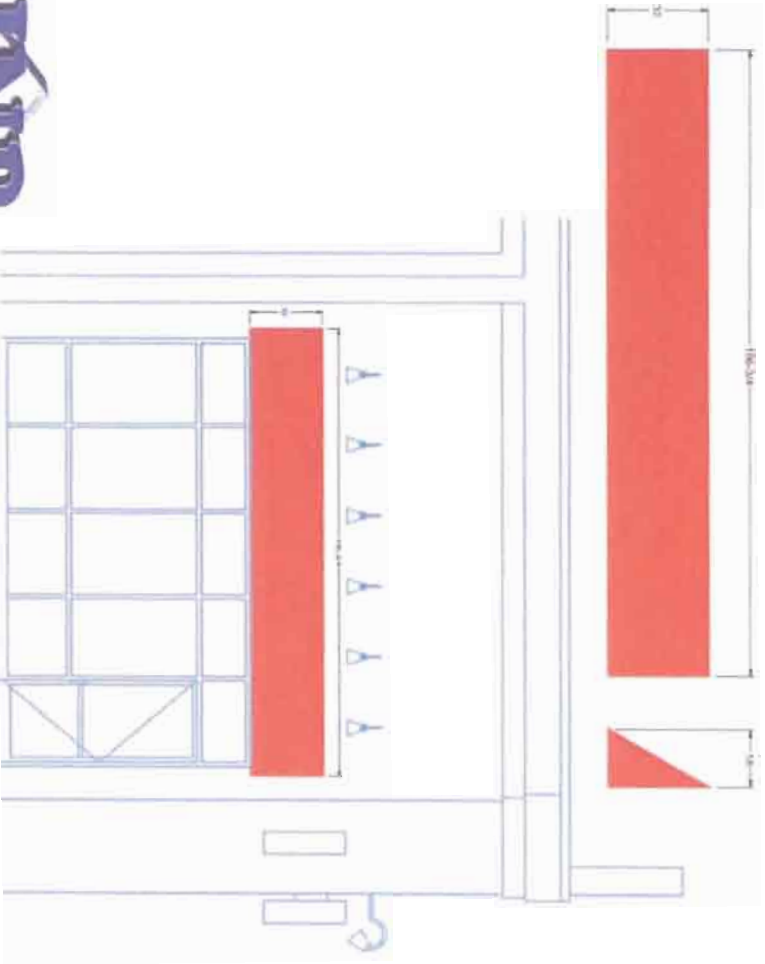
Survey Needed - Customer request or existing lettering requires you to survey the site prior to manufacturing signs.

NOTICE - Customer request or existing lettering requires you to survey the site prior to manufacturing signs.

Handwritten signature/initials

NON ILLUMINATED VINYL AWNING SPECIFICATIONS:

Fabricated, all aluminum tube frame construction, non illuminated vinyl covered awning. Exact color to be determined. Mounted to wall above windows. Awning to project 18" out from face of wall.



© Listed
Copyright

JNB SIGNS INCORPORATED 1871 Vendue Drive, Suite 1, Jenesville, WI 53546
Phone: 1-800-943-7997 Fax: 1-608-756-7805

CLIENT Five Guys
JOB SITE 19829 S. Ludgrange Rd, Okland Park, IL

SALESMAN Matt Stried
ARTIST Cory

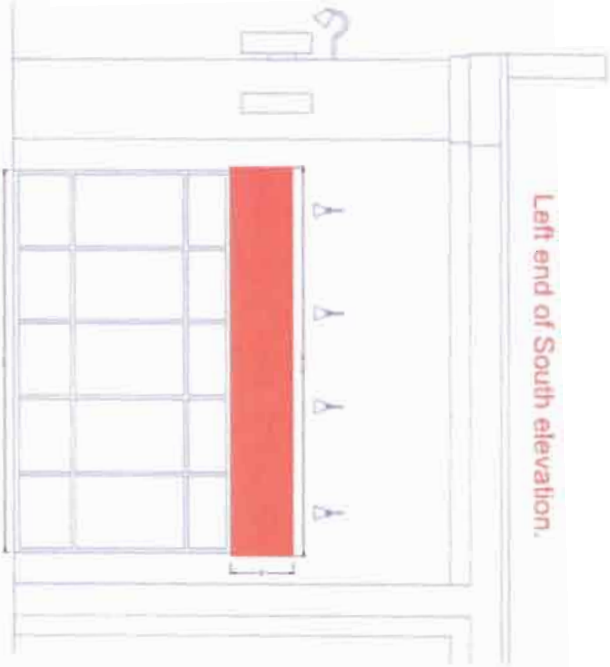
CUSTOMERS SIGNATURE
DATE 01/09/09

DRAWING 03776-03
DATE

Handwritten initials 'MS' in the bottom right corner of the page.

NON ILLUMINATED VINYL AWNING SPECIFICATIONS:

Fabricated, all aluminum tube frame construction, non illuminated vinyl covered awning. Exact color to be determined. Mounted to wall above windows. Awning to project 18" out from face of wall.



© Copyright

Listed

1991 Venture Drive, Suite 1, Jansenville, WI 53546 Phone: 1-800-943-7997 Fax: 1-608-754-7800

CLIENT: Five Guys SALESMAN: Matt Stried ARTIST: Cory

JOB SITE: 15825 S. LaGrange Rd, Oland Park, IL

DATE: 01/23/09 CUSTOMERS SIGNATURE: *[Signature]* DATE: *[Signature]*

DRAWING: 03776-04 1 of 1

SMd

RACEWAY CHANNEL LETTER SPECIFICATIONS :



Channel Letters : Standard race lighting pleat face design, fabricated aluminum pan letters, .090" backs, returns 5" x .063", welded construction, sealed seams, drain holes.

Finish : Letter interiors painted with reflective light enhancing paint, exteriors primed and painted "Red".

Letter Faces : 3/16" "Red" translucent acrylic (#2793) finished with 1" (Red) Jewelle trimcap.

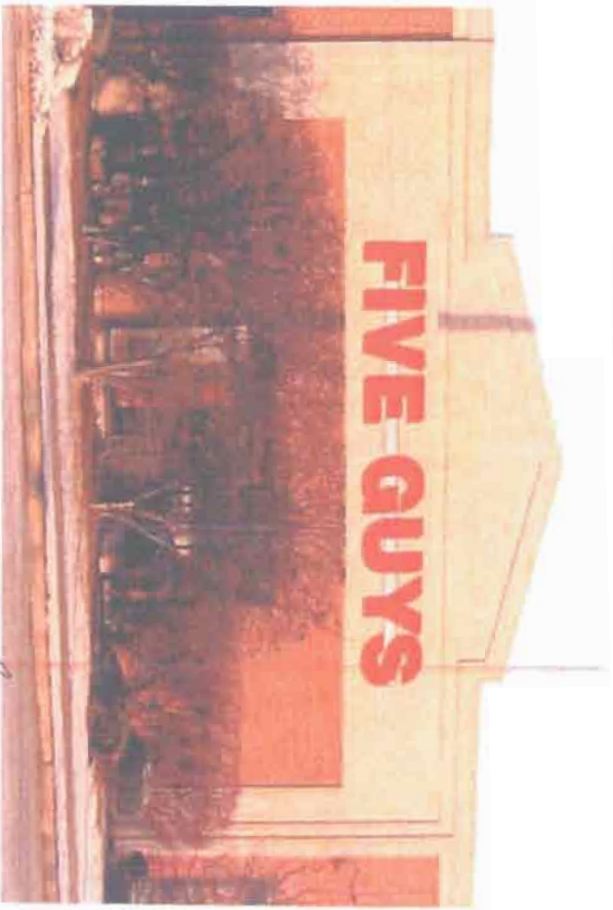
Raceway : Standard 8" tall x 8" deep, riveted aluminum, .063" skin, internal mounting brackets.

Raceway Finish : Exterior primed and painted to match building exterior using Matthews Acrylic Polyurethane. Exact color to be determined.

Illumination : Lettering to be lit internally using "Red" LED modules.

Electrical : 120 volts, UL Listed & Labeled, LED power supplies housed inside raceway.

VOLTAGAGE
 120 Volts
 277 Volts



© Copyright

LISTED

PHI SIGNS, INCORPORATED 1931 Venture Drive, Suite 1, Janesville, WI 53546 Phone: 1-800-543-7197 Fax: 1-608-754-7892

CLIENT Five Guys Burgers & Fries

SALESMAN Matt Stroud

ARTIST Cory

DATE 01-23-09

CUSTOMERS SIGNATURE *[Signature]* DATE

DRAWING 03776-06 1 of 1

218