



PLAT OF ANNEXATION INTO THE VILLAGE OF ORLAND PARK, ILLINOIS OF

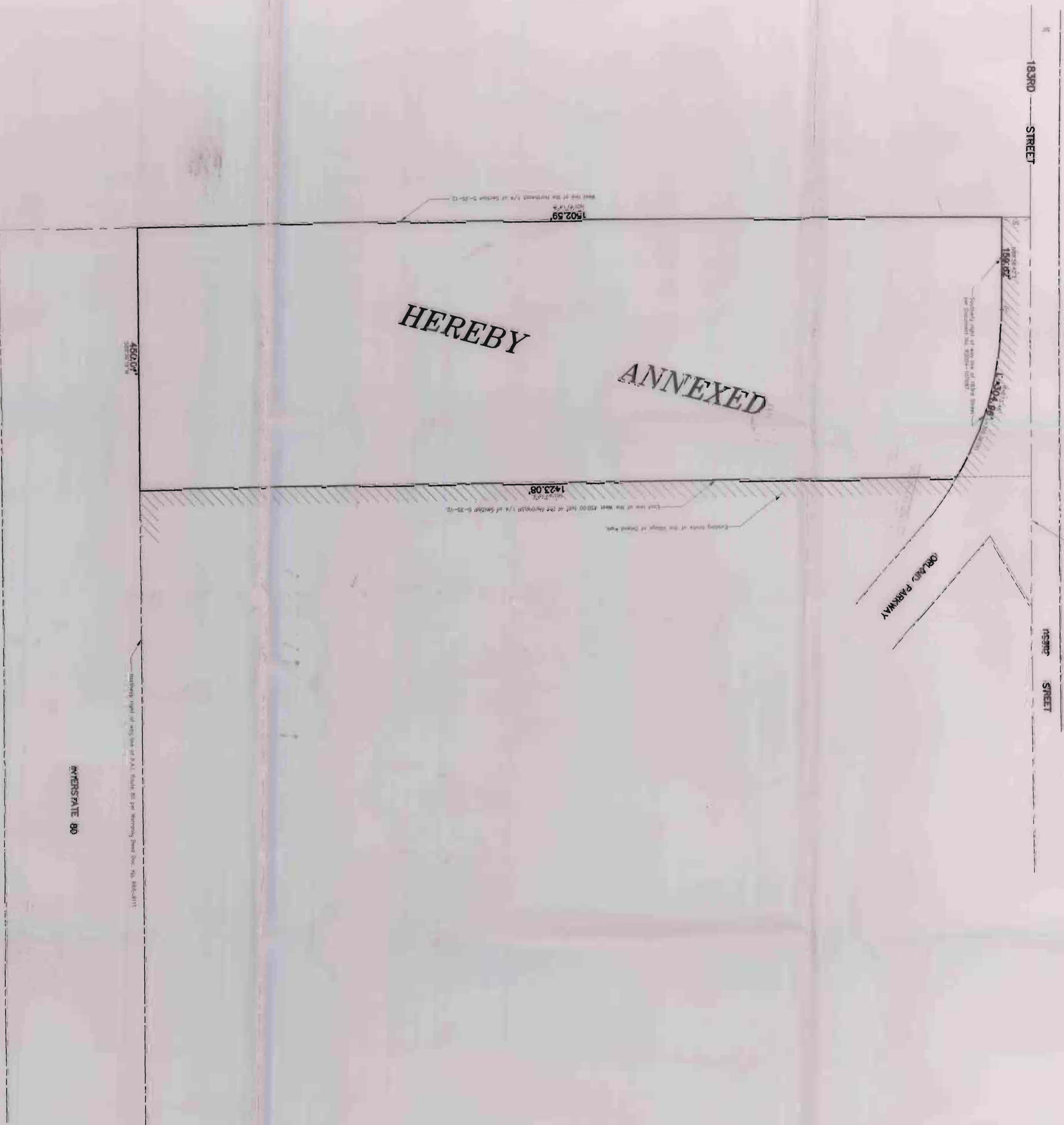


That part of the West 450.00 feet of the Northeast 1/4 of Section 5, Township 35 North, Range 12 East of the Third Principal Meridian lying Northerly of the North line of Lot 6 of Block 111 and West of the East line of Lot 1 of Block 111 and lying Southerly of the Southerly right of way line of 153rd Street, per plat of dedication, recorded as Document No. R2004-10287, in Will County, Illinois.

ORDINANCE NO. 4508

AREA = 88,967 SQ. FT.
OR 1.5395 ACRES

85566100022



I, Charles HIRCH, HIRCH, A NOT FOR PROFIT CORPORATION, does hereby certify that it is the owner of record title to the property described in the above caption and that the said title-holder has caused this annexation plat to be drawn for the purposes herein set forth.

Dated at Palmer Heights, Illinois, this 21st day of October, A.D. 2009.

Address: 6830 N. 122nd St.

City: Palmer Heights, IL 60463

BY: Joseph W. Felder

ATTEST: Stephanie M. Beckler

State of Illinois) s.s.
County of Cook) s.s.

I, Stephanie M. Beckler, a NOTARY PUBLIC in and for said county and state do hereby certify that

Stephanie M. Beckler (Name)
Stephanie M. Beckler (Title)

Given under my hand and Notarial Seal this 21st day of October, A.D. 2009.

WAGERSVILLE 80

State of Illinois) s.s.
County of Will) s.s.
We, BURKE ENGINEERING CORPORATION, do hereby certify that we have prepared the plat hereon drawn for the purpose of annexation into the Village of Orland Park, Illinois.

Dated at Orland Park, Illinois, this 21st day of May, A.D. 2009.

BY: Bradley K. Luerners
ILLINOIS PROFESSIONAL LAND SURVEYOR NO. 035-003416
BRADLEY K. LUERNERS



Approved and accepted by the PRESIDENT and the BOARD OF TRUSTEES of the Village of Orland Park, Cook County, Illinois at a meeting held on the 21st day of September, A.D. 2009.

BY: William J. Miller
VILLAGE CLERK

AFTER RECORDING RETURN TO:
WILSON, THORNE & JENNINGS, LTD.
20 N. WACKER DRIVE, STE 1600
CHICAGO, IL 60606
(312) 467-1100
/EWF/SG

PREPARED BY:
BURKE ENGINEERING CORPORATION
1001 N. WACKER DRIVE, SUITE 1600
CHICAGO, ILLINOIS 60607
PROFESSIONAL DESIGN FIRM NO. 184001799
PHONE: (773) 326-4000
FAX: (773) 326-4290