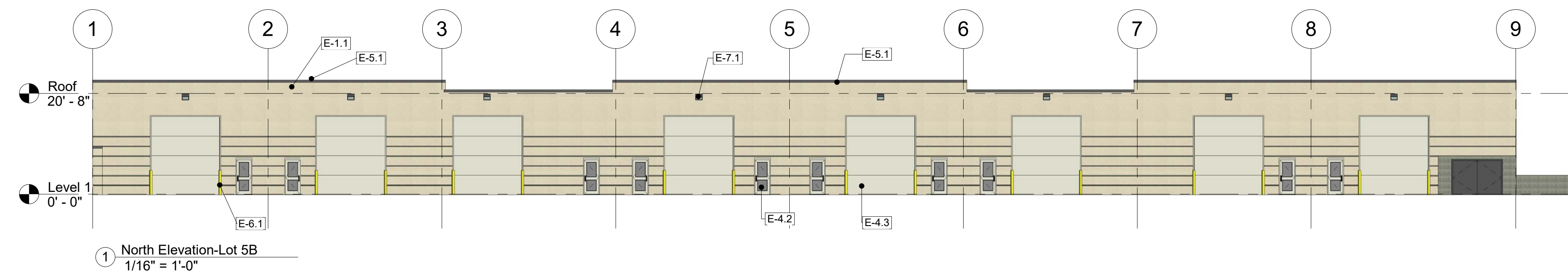
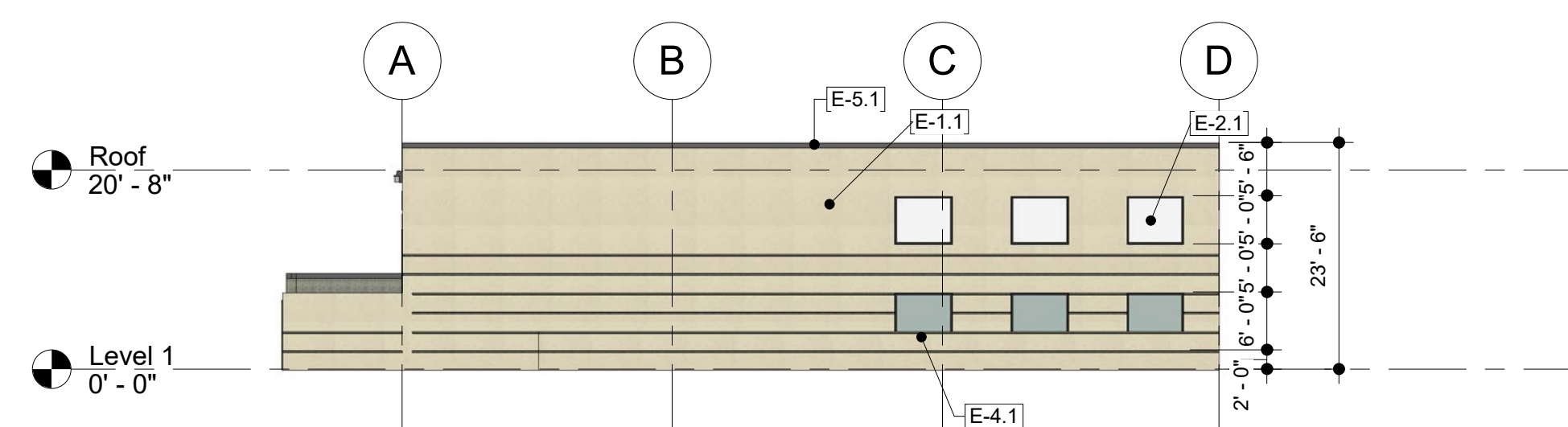


Keystone Legend

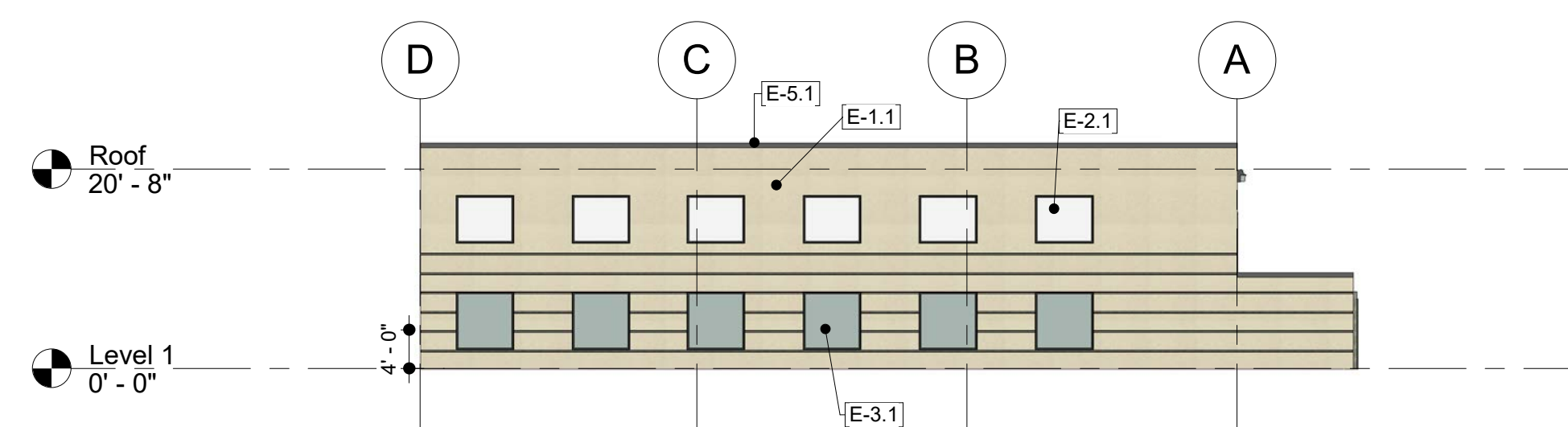
Key Value	Keystone Text
E-1.1	Architectural precast wall panel - stained light tan
E-1.2	Architectural precast wall panel - stained dark taupe
E-2.1	Architectural precast notch-out panel - Painted finished off-white color
E-3.1	Clear anodized aluminum window with green tinted insulating glass
E-4.1	Clear anodized aluminum door with green tinted tempered insulating glass
E-4.2	Insulated hollow metal man-door in hollow metal frame - painted off-white
E-4.3	Insulated metal overhead door - pre-finished off-white color
E-5.1	Roof edge flashing with drip - pre-finished metal dark taupe color
E-6.1	Painted concrete filled bollard
E-7.1	Exterior wall pack (LED)



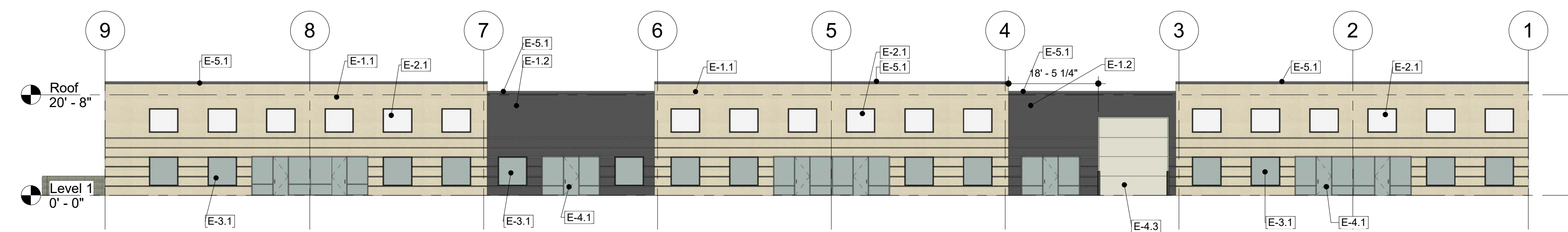
1 North Elevation-Lot 5B
 1/16" = 1'-0"



2 East Elevation-Lot 5B
 1/16" = 1'-0"



4 West Elevation-Lot 5B
 1/16" = 1'-0"



3 South Elevation-Lot 5B
 1/16" = 1'-0"

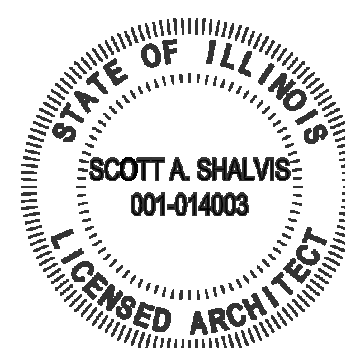
No.	Description	Date

Orland Investors
 Lot 5B Orland Park
 Business Center
 Building Elev.-Lot 5B

Project number	2018-009
Date	1-21-2019
Drawn by	SAS
Checked by	Checker

Ask-1.0

Scale	1/16" = 1'-0"
-------	---------------

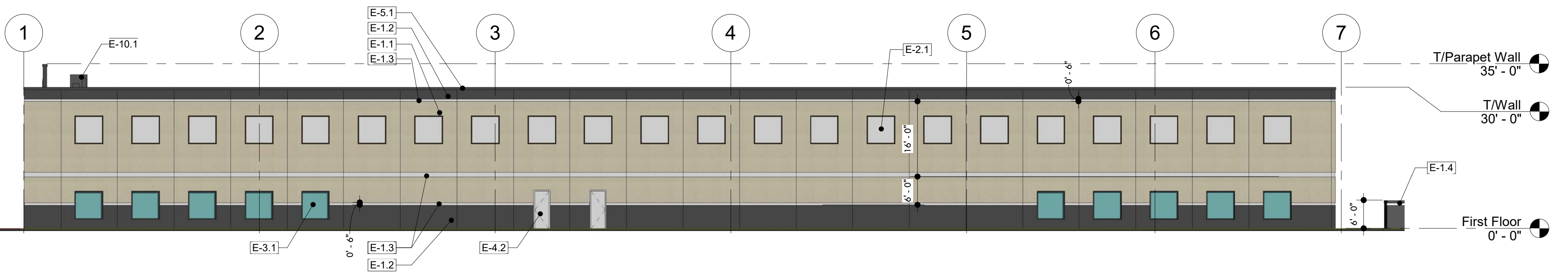


Keynote Legend

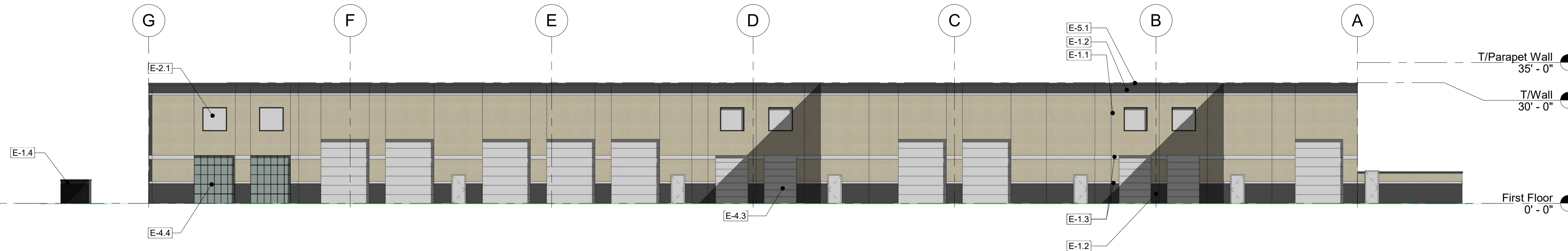
Key Value	Keynote Text
E-1.1	Architectural precast wall panel - stained light tan
E-1.2	Architectural precast wall panel - stained dark taupe
E-1.3	Architectural precast wall panel 1/2" deep reveal - stained white
E-1.4	Sign Panel - Architectural precast wall panel - stained dark taupe
E-2.1	Architectural precast north-out panel - Painted finished off-white color
E-3.1	Clear anodized aluminum window with green tinted insulating glass
E-4.2	Insulated hollow metal man-door in hollow metal frame - painted off-white
E-4.3	Insulated metal overhead door - pre-finished off-white color
E-4.4	Metal overhead door with tempered insulated glass panels
E-5.1	Roof edge flashing with drip - pre-finished metal dark taupe color
E-5.2	Wall coping - pre-finished metal dark taupe color
E-8.1	Refuse enclosure - Architectural precast wall panels with with painted metal gate
E-9.1	Parapet wall +/-5'-0" ht. as required to screen all rooftop equipment
E-10.1	Rooftop HVAC unit

Note: Dimensions for wall and opening heights, etc., are typical for all elevations

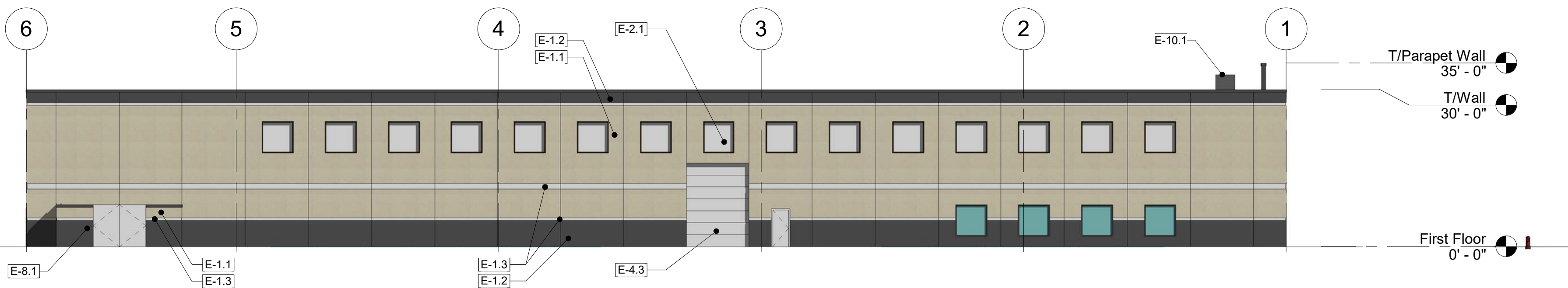
① East Elevation-Lot 6
1/16" = 1'-0"



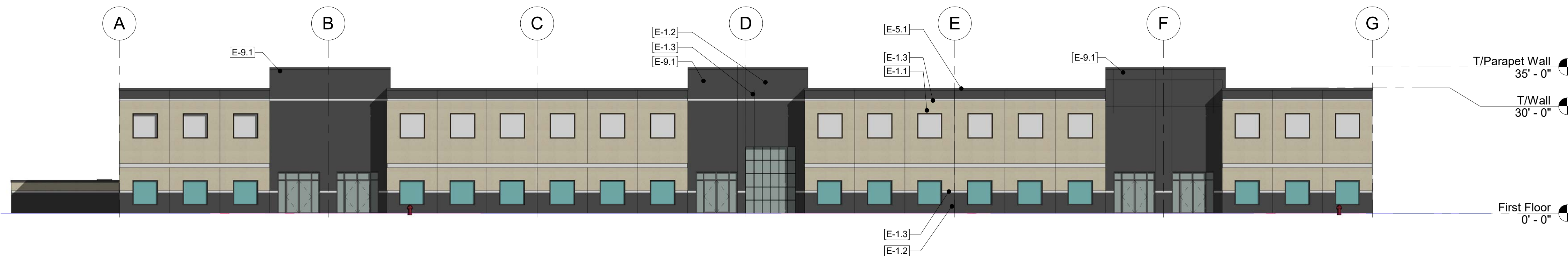
② North Elevation-Lot 6
1/16" = 1'-0"



③ West Elevation-Lot 6
1/16" = 1'-0"



④ South Elevation-Lot 6
1/16" = 1'-0"



No.	Description	Date

Orland Investors
Orland Park Business Center - Lots 5A,6,7
Building Elev.-Lot 6

Project number	2018-009
Date	1/21/2019
Drawn by	Author
Checked by	Checker

Scale: 1/16" = 1'-0"

Ask-1.1