

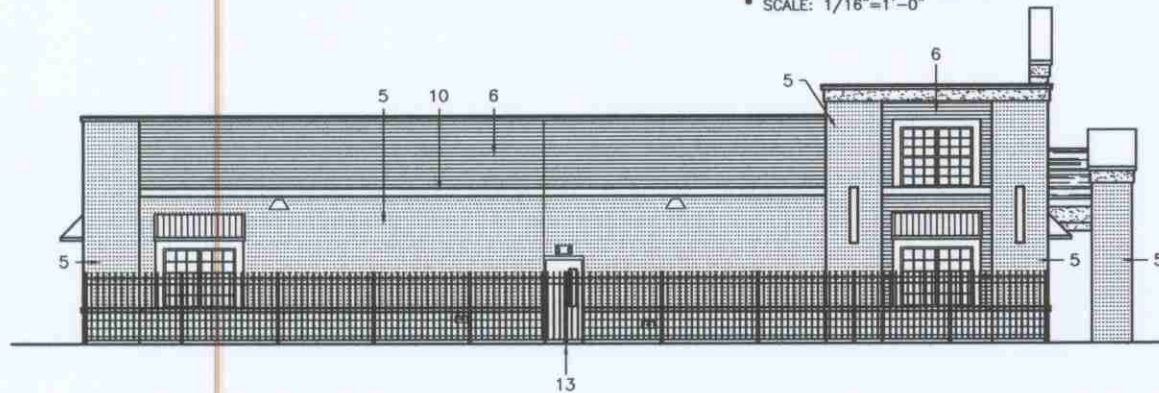
CHILDREN OF AMERICA
 THE SHOPS AT 88
 159th STREET & 88th AVENUE
 ORLAND PARK, IL
 PROPOSED ELEVATIONS 10-1-2009

RECEIVED
 OCT - 1 2009
 BUILDING DEPT.

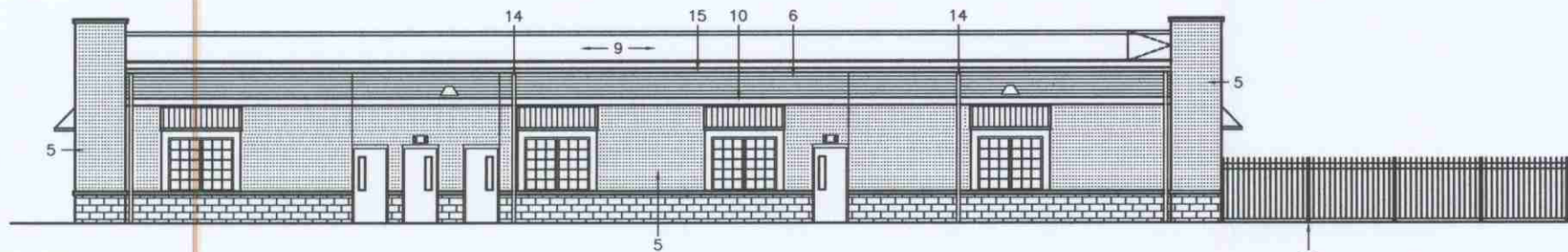


BOARD APPROVED
 CASE NO. 2009-0327
 DATE 10-5-09
 W/CONDITIONS
 W/O CONDITIONS

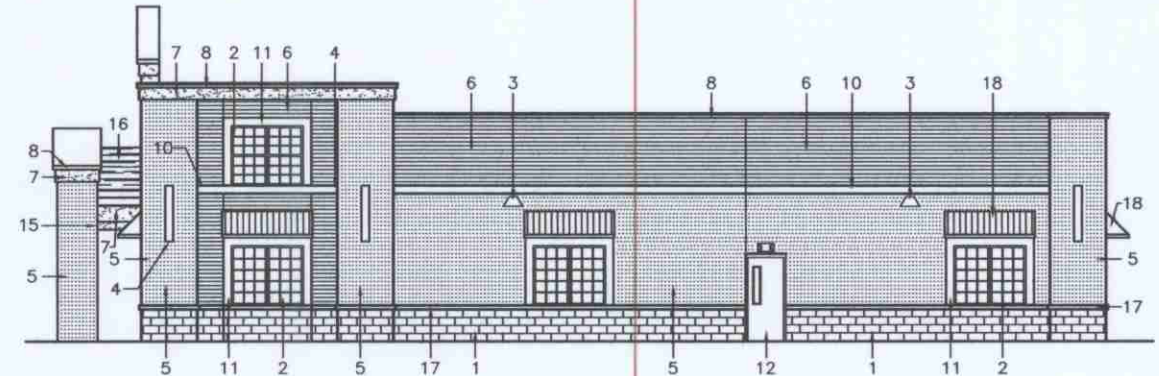
1 NORTH ELEVATION
 SCALE: 1/16"=1'-0"



2 EAST ELEVATION
 SCALE: 1/16"=1'-0"



4 SOUTH ELEVATION
 SCALE: 1/16"=1'-0"



3 WEST ELEVATION
 SCALE: 1/16"=1'-0"

EXTERIOR ELEVATIONS KEYED NOTES

- | | |
|---------------------------------|---|
| 1 SPLIT FACE CMU VENEER. | 10 8" PRECAST BAND. |
| 2 WINDOW. | 11 CAST STONE SURROUND. |
| 3 LIGHTING. | 12 GALVANIZED H.M. DOOR AND FRAME. |
| 4 PRECAST ACCENT (8" X 4'-8") | 13 ORNAMENTAL IRON FENCE. |
| 5 BRICK VENEER, LIGHTER COLOR. | 14 PREFINISHED ALUMINUM DOWNSPOUT. |
| 6 BRICK VENEER, DARKER COLOR. | 15 6" PREFINISHED ALUMINUM GUTTER. |
| 7 E.I.F.S. SYSTEM WITH REVEALS. | 16 DIMENSIONAL ASPHALT SHINGLES. |
| 8 PREFINISHED METAL COPING. | 17 4" PRECAST SILL, ROUNDED 2", TAPERED INTO EACH DOOR FRAME. |
| 9 RTU'S (NOT SHOWN). | 18 AWNING. |

DEVELOPED BY:

PRAEDIUM
 DEVELOPMENT CORPORATION
 707 SKOKIE BOULEVARD SUITE 210
 NORTHBROOK, IL 60062

BASE TEN
 ARCHITECTS, INC

b10a

475 W. 55th Street
 Suite 209
 La Grange, IL
 60525
 T 708.215.8002
 F 708.215.8005
 b10a.com