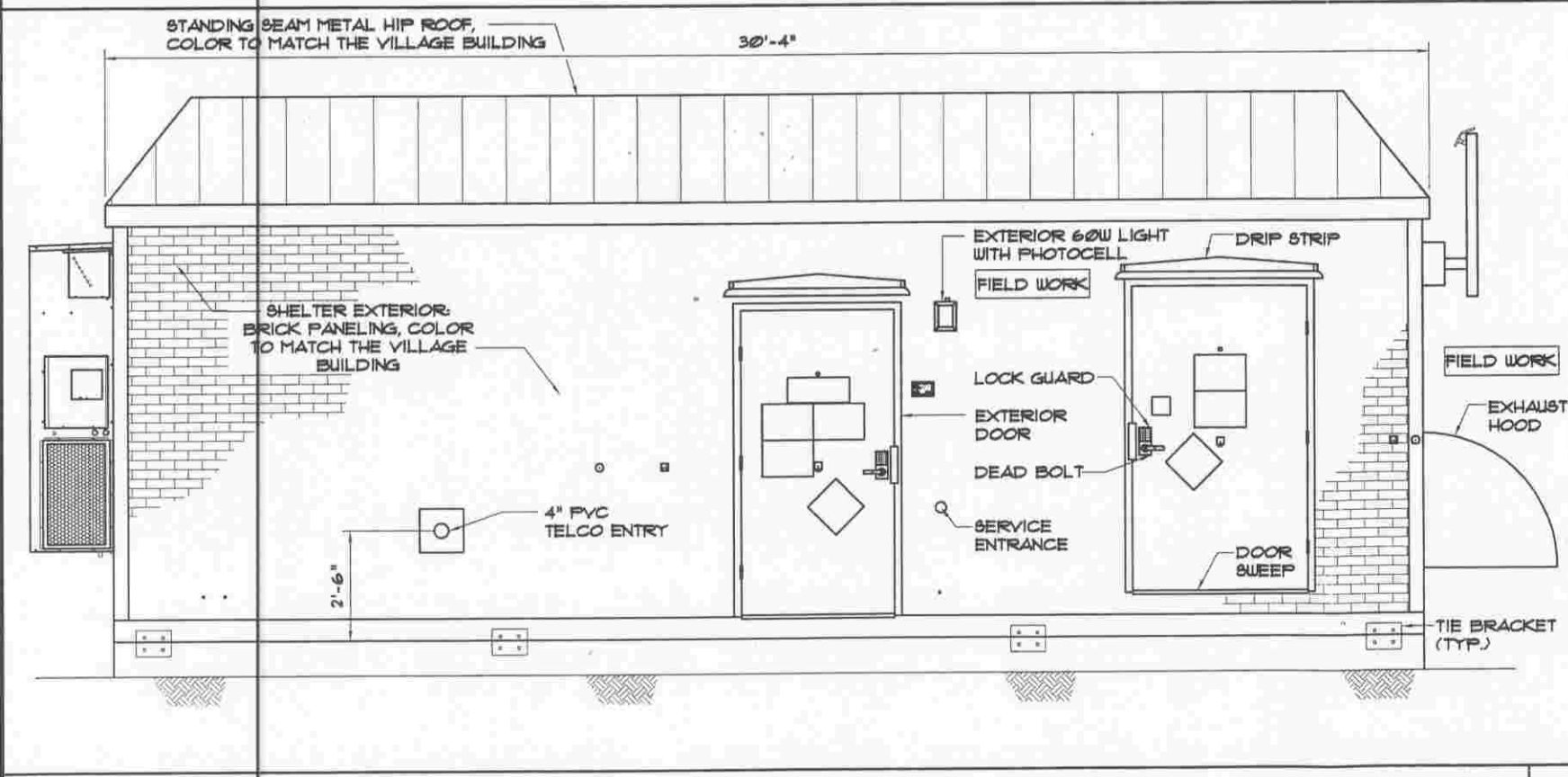
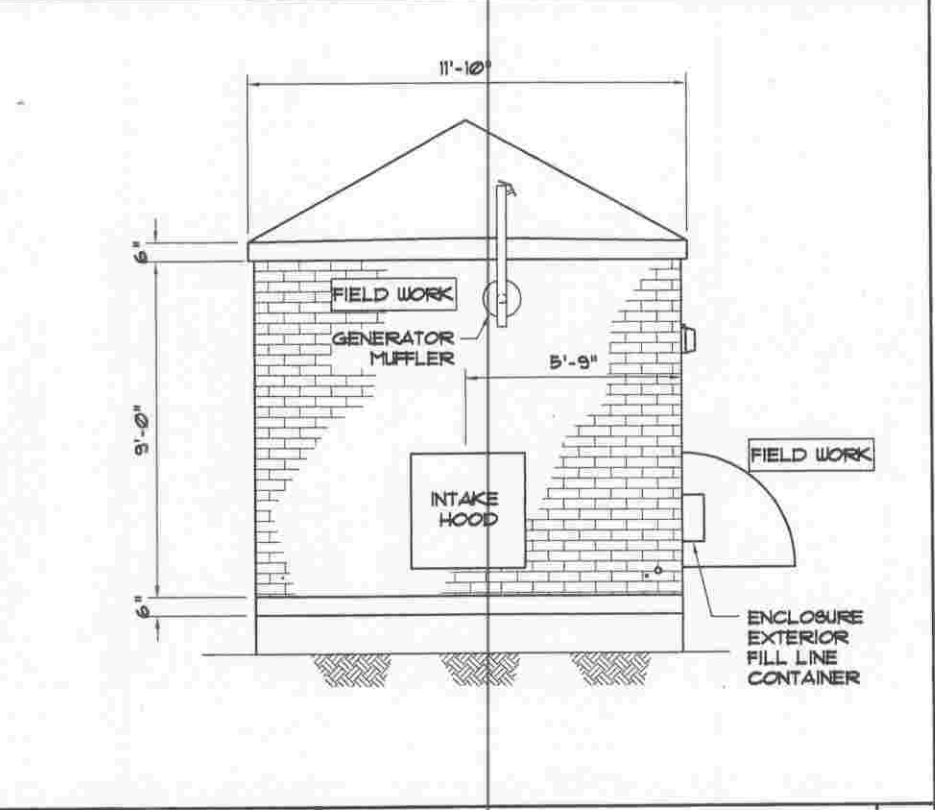


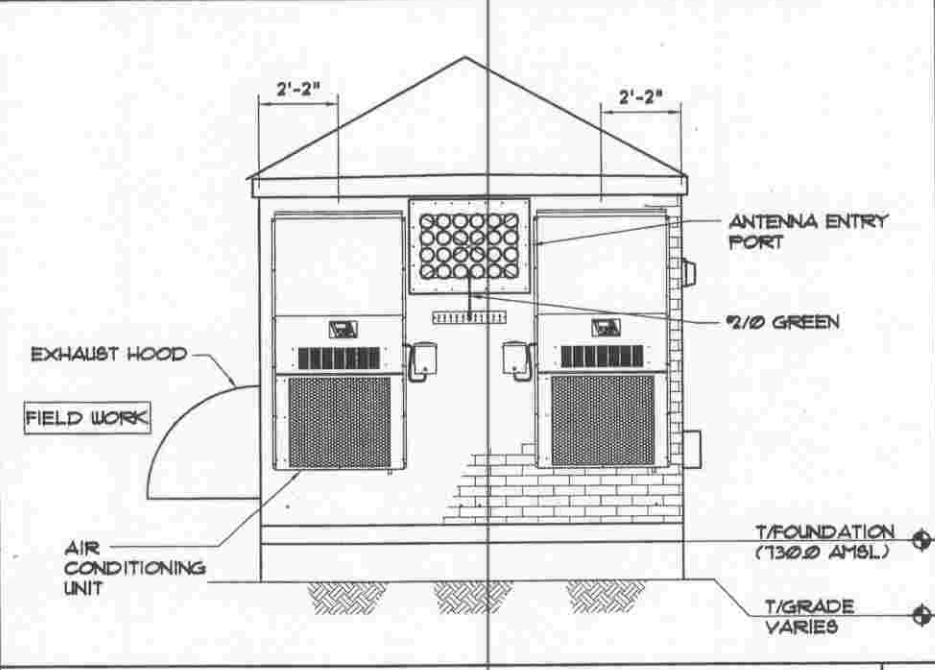
FLOOR PLAN-EQUIPMENT SHELTER SCALE: N.T.S. 1



SOUTH ELEVATION-EQUIPMENT SHELTER SCALE: N.T.S. 2



EAST ELEVATION-EQUIPMENT SHELTER SCALE: N.T.S. 3



WEST ELEVATION-EQUIPMENT SHELTER SCALE: N.T.S. 4

**NOTES:**

- EQUIPMENT SHELTER IS MANUFACTURED BY FIBERBOND CORPORATION 1300 DAVENPORT DRIVE, MINDEN, LA, 71055, CONTACT INFO: (318) 371-1030
- EPS BOARD INSULATION IS LISTED TO HAVE A FLAMESPREAD OF 25 OR LESS AND SMOKE DEVELOPED OF 450 OR LESS WITH A MAXIMUM THICKNESS OF 2 INCHES AT 1 PCF DENSITY. POLYISOCYANURATE FOAM INSULATION HAS BEEN TESTED TO A MAXIMUM THICKNESS OF 3 INCHES AT 1.3 PCF AND HAS A FLAMESPREAD OF 25 AND A SMOKE PRODUCT OF 395.
- INTERIOR PANELING IS LISTED TO HAVE A FLAMESPREAD OF 200 OR LESS.
- SHELTER AND ASSOCIATED EQUIPMENT IS PROVIDED BY OWNER UNDER SEPARATE CONTRACT, EQUIPMENT SHELTER INFORMATION INDICATED HEREIN IS PROVIDED FOR REFERENCE ONLY AND IS TAKEN FROM MANUFACTURER'S AVAILABLE DATA.

**Chicago SMSA**  
 Limited Partnership  
 d/b/a Verizon Wireless  
 1515 Woodfield Rd.  
 Suite 1400,  
 Schaumburg, IL 60173

**Fullerton**  
 Engineering Consultants  
 9100 W. Higgins Rd, Suite 800  
 Rosemont, Illinois 60018  
 Tel. 847-292-0100  
 Fax 847-292-0105

THIS DRAWING IS THE PROPERTY OF FULLERTON ENGINEERING CONSULTANTS, INC. IT IS FOR THE EXCLUSIVE USE OF THIS PROJECT. ANY RE-USE OF THIS DRAWING WITHOUT THE EXPRESSED WRITTEN CONSENT OF FULLERTON ENGINEERING CONSULTANTS, INC. IS PROHIBITED.

SITE NAME	RT. 74 WEST
LOCATION NUMBER	187771
PROJECT NUMBER	2008284367
SITE ADDRESS	15501 PARK STATION BLVD. ORLAND PARK, IL 60467

#	DATE	REVISIONS	
	05/15/09	ZONING	AU
	08/14/09	ZONING	AU

CHECKED BY: RJ  
 APPROVED BY: MB

DATE SIGNED: \_\_\_\_\_  
 EXPIRATION DATE: \_\_\_\_\_

SHEET TITLE  
**EQUIPMENT SHELTER LAYOUT**

SHEET NUMBER  
**Z-5**