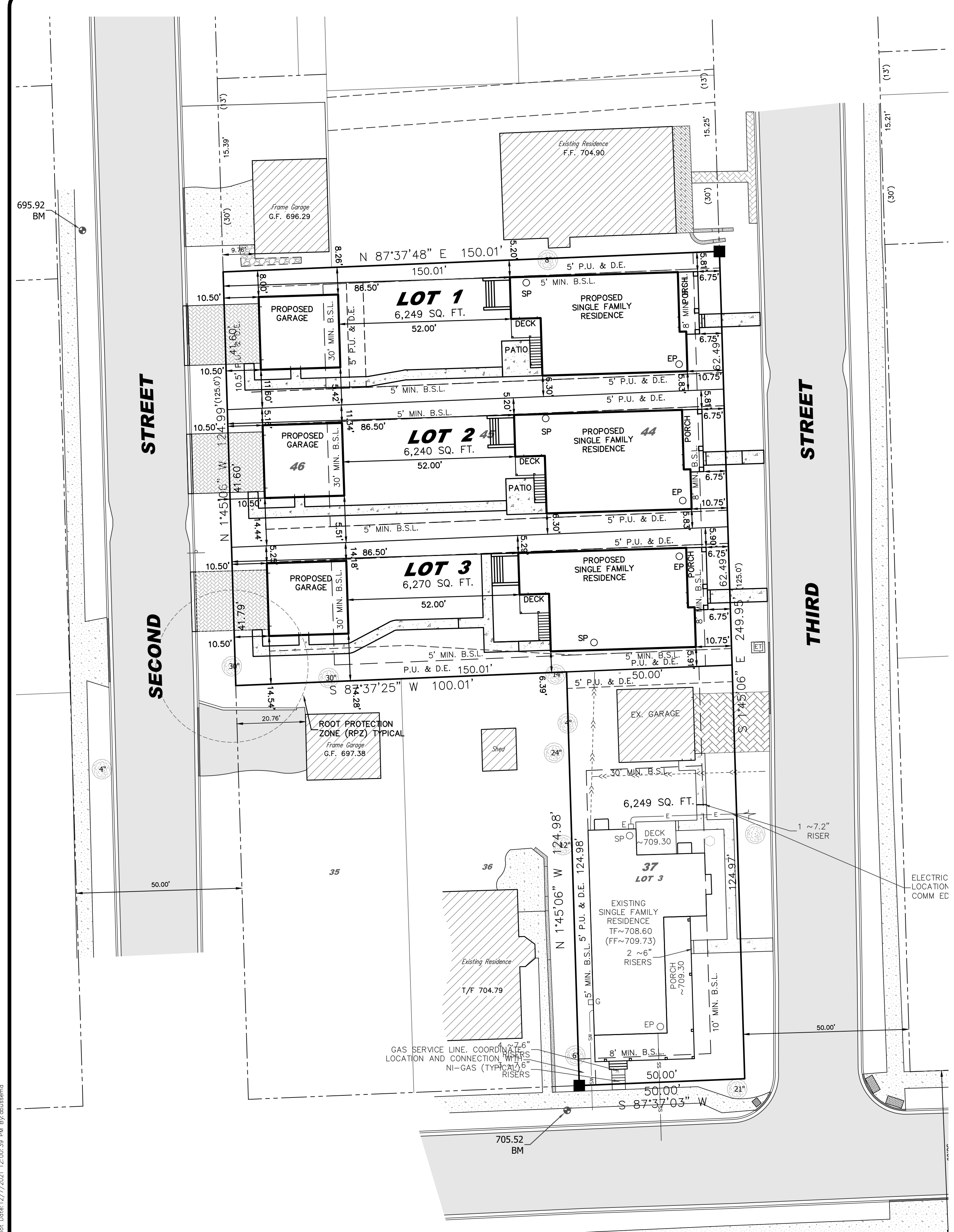


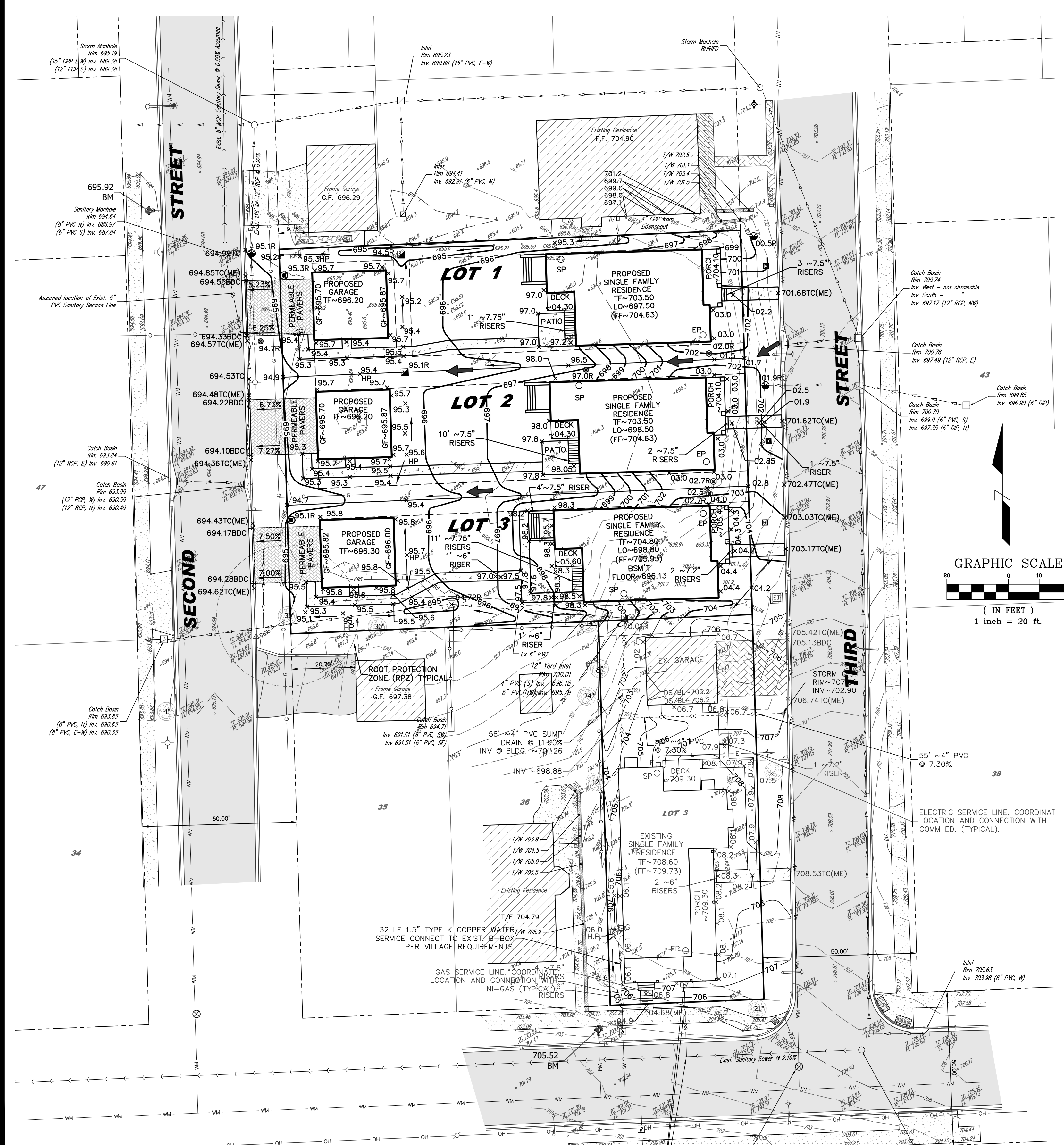
L:\Projects\2018\18-004\Engineering\Drawings\18-004_P1.dwg 12/07/2021 12:00:39 PM By: dms



GEOMETRIC PLAN

ADDRESS CHART:

LOT 1:	14414 3RD AVENUE
LOT 2:	14420 3RD AVENUE
LOT 3:	14426 3RD AVENUE

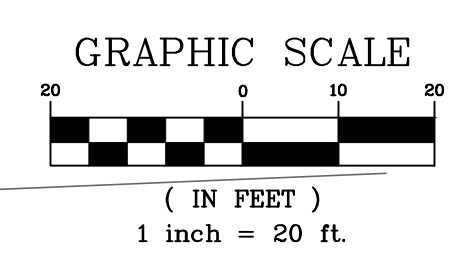


GRADING PLAN

- NOTE:**
- SEE SHEET #8A FOR DETAILED GRADING NOT INDICATED ON THIS SHEET.
 - THE VILLAGE RESERVES THE RIGHT TO MAINTAIN THE DRAINAGE PATTERNS AND INTEGRITY OF THE EASEMENTS AS PART OF THIS PROJECT. NO OBSTRUCTIONS OF ANY KIND SHALL BE PLACED DURING OR AFTER CONSTRUCTION IS COMPLETE WITH THESE EASEMENTS AND THE VILLAGE RESERVES THE RIGHT TO REMOVE ANY OBSTRUCTIONS, PLANTINGS, OR RECTIFY ANY UNAPPROVED ELEVATION CHANGES AT THE EXPENSE OF THE PROPERTY OWNER.
 - GRADES ADJACENT TO PROPOSED FOUNDATIONS SHALL BE T/F - 6".

VOLUME CONTROL STORAGE VOLUME CALCULATIONS:

LOT	DRIVEWAY AREA	DEPTH OF AGGREGATE	VOLUME OF AGGREGATE	VC VOLUME = (AGGREGATE VOLUME X 0.36)
LOT 1	387 S.F.	1.75"	677.25 C.F.	243.81 C.F.
LOT 2	388 S.F.	1.75"	679 C.F.	244.44 C.F.
LOT 3	389 S.F.	1.75"	680.25 C.F.	245.07 C.F.



REVISIONS

NO.	DATE	DESCRIPTION	BY
1	12-07-21	PER VILLAGE REVIEW	DMZ

2ND AVENUE DEVELOPMENT
14439 1ST AVENUE
ORLAND PARK, ILLINOIS
(708) 369-7489

FINAL ENGINEERING PLANS
FOR
LAWLER RE-SUBDIVISION OF
PEONY PLACE
ORLAND PARK, ILLINOIS

DESIGNTEK ENGINEERING, INC.
 CONSULTING, CIVIL ENGINEERING & LAND SURVEYING
 9930 W. 190TH STREET, SUITE L
 MOKENA, ILLINOIS 60448
 (708) 326-4961
 FAX: (708) 326-4962
 ILL. PROF. LIC. NO.: 184-003740



PROJECT INFORMATION
 Project No.: 18-0054
 Scale: 1" = 20'
 Date: 09-15-2021
 Design By: SDS
 Drawn By: DEI
 Checked By: SDS

8
 OF
 10

GRADING & GEOMETRIC PLANS