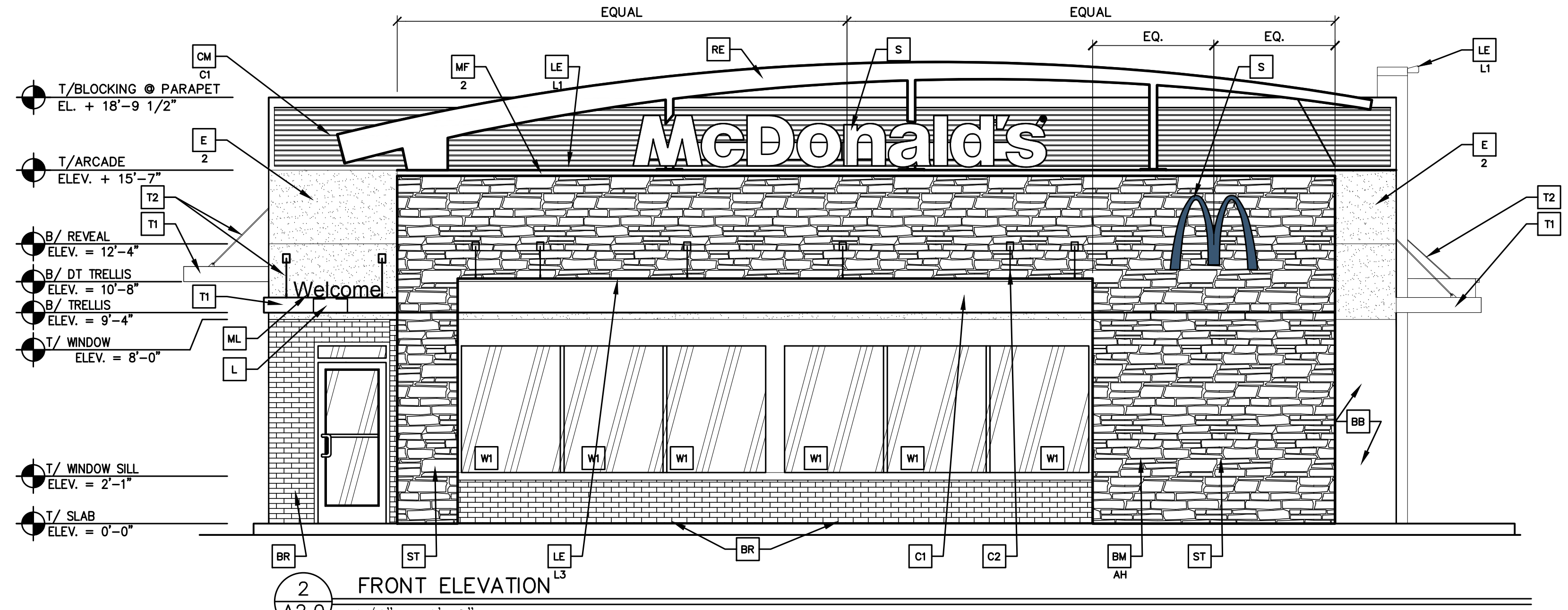


SIDE ELEVATION

1/4" = 1'-0"



FRONT ELEVATION

1/4" = 1'-0"

- KEY NOTES:**
- BB EXISTING BASE BUILDING BRICK PAINTED MINK BM-2112-10
  - BR FACEBRICK
  - B1-COLOR: B1 = "MODULAR SUNGLO" BLENDED BRICK OR EQUAL (MATCH EXISTING BRICK)
  - C1 ALUMINUM CANOPY SYSTEM (COLOR: GOLD)
  - C2 ALUMINUM CANOPY TIE-BACK SYSTEM
  - CJ CONTROL JOINT
  - X TYPE: 1 = EIFS - SEE DETL 8/A4.1

- CM CORRUGATED METAL PANEL - SEE 7/A5.0
- C1-COLOR: C1 = "CITYSCAPE" BY METAL-ERA
- D HOLLOW METAL DOOR - PAINT TO MATCH COLOR OF SURROUNDING MATERIAL
- DS EXISTING ALUMINUM GUTTER AND DOWNSPOUT - PAINT TO MATCH COLOR OF SURROUNDING MATERIAL
- DS NEW ALUMINUM SCUPPER & DOWNSPOUT - PAINT TO MATCH COLOR OF SURROUNDING MATERIAL

- E EXTERIOR INSULATION FINISH SYSTEM (E.I.F.S.)
- X-COLOR: 2 = BENJAMIN MOORE MINK BM-2112-10
- EJ EXPANSION JOINT, SEE DETAIL 7/A4.1
- L LIGHT FIXTURE (WALL SCONCE) - SEE ELECTRICAL
- LE ACCENT LIGHTING - SEE ELECTRICAL
- L1-LED LIGHT: L1 = UP AND DOWN FIXTURE L2 = DOWN ONLY FIXTURE L3 = INTEGRAL CANOPY FIXTURE L4 = UP ONLY FIXTURE
- ML METAL LETTERING - BY OTHERS

- MF METAL FASCIA - COLOR TO MATCH CORRUGATED METAL PANEL - SEE 2/A5.0
- 1-TYPE: 1 = PRE-FAB ANCHOR-TITE FASCIA 2 = PRE-FAB CUSTOM ARCADE FASCIA 3 = PRE-FAB MASONRY CAP FASCIA
- PB PIPE BOLLARD - PAINTED YELLOW
- RC ROOF CAP ELEMENT BY OTHERS
- T1 ALUMINUM TRELLIS SYSTEM
- T2 TRELLIS TIE-BACK SYSTEM
- T3 ALUMINUM TRELLIS 2" x 8" WALL FASCIA SYSTEM - REFER TO SIM. DETAIL 6 ON SHEET A5.2

- ST CULTURED STONE, BY BORAL STONE PRODUCTS (McD PFSW BLEND)
- S McDONALD'S SIGNAGE BY OTHERS - UNDER SEPARATE PERMIT.
- SF NEW SPILT FACED CMU BLOCK - MATCH EXISTING BLOCK
- W1 EXTERIOR WINDOW ASSEMBLY - TEMPERED GLASS - SEE ASSEMBLY NOTES
- W2 DRIVE-THRU WINDOW BY READY ACCESS 600 SERIES, 36" SERVICE HEIGHT WITH TRANSOM - MANUAL OPEN; ELECTRONIC RELEASE

**NOTE:**

- EIFS CONTROL JOINTS INSTALLED PER MANUFACTURER'S RECOMMENDATIONS.
- PAINT TRASH CORRAL INCLUDING DOORS, BOLLARDS ETC. TO MATCH MAIN BUILDING COLOR.

**NOTE:**

**COLOR LEGEND** (ALL COLORS ARE PER BENJAMIN MOORE PAINTS, U.N.O.)

CHOCOLATE SCHEME	ARCADES	LEDGESTONE - "BIG HORN" OLD COUNTRY BUILDING STONE BY BUILDING STONE PRODUCTS
	BASE BUILDING	BASE COLOR - MINK BM-2112-10

NOTES:

LINGLEDESIGNGROUP, INC  
 158 WEST MAIN STREET  
 LENA, IL 61048 158  
 1860 W. EVANS AVE.  
 ENGLEWOOD, CO 80110  
 PHONE: 815-369-9155  
 FAX: 815-369-4495  
 WWW.LINGLEDESIGN.COM



© ALL DRAWINGS AND WRITTEN MATERIAL CONTAINED HEREIN ARE THE PROPERTY OF THE LINGLE DESIGN GROUP, INC. THEY MAY NOT BE REPRODUCED, COPIED, REUSED, OR DISCLOSED IN ANY MANNER WITHOUT WRITTEN AUTHORIZATION FROM THE ARCHITECT.



**McDonald's USA, LLC**  
 14445 S LaGrange Rd  
 ORLAND PARK, IL 60462

REVISIONS:

#	DATE	DESCRIPTION
1	7/7/16	REVISED FRIGS FROM GAS TO ELECTRIC
2	1/03/16	REVISED ROOF LADDER LOCATION
3	1/12/17	REVISED PER FINAL DECOR LAYOUT

PROJECT NUMBER: 15-600  
 DRAWN BY: JMK  
 CHECKED BY: CL

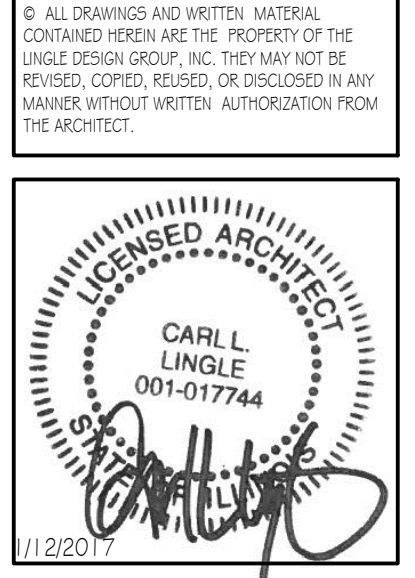
ISSUED DATE: 05/25/2015

SHEET TITLE:  
**EXTERIOR ELEVATIONS**

SHEET NUMBER:  
**A2.0**



© ALL DRAWINGS AND WRITTEN MATERIAL CONTAINED HEREIN ARE THE PROPERTY OF THE LINGLE DESIGN GROUP, INC. THEY MAY NOT BE REPRODUCED, COPIED, REUSED, OR DISCLOSED IN ANY MANNER WITHOUT WRITTEN AUTHORIZATION FROM THE ARCHITECT.



**McDonald's USA, LLC**  
 14445 S LaGrange Rd  
 ORLAND PARK, IL 60462

REVISIONS	#	DATE	DESCRIPTION
	1	7/7/16	REVISED FRIGS FROM GAS TO ELECTRIC
	2	1/03/17	REVISED ROOF LADDER LOCATION
	3	1/12/17	REVISED PER FINAL DECOR LAYOUT

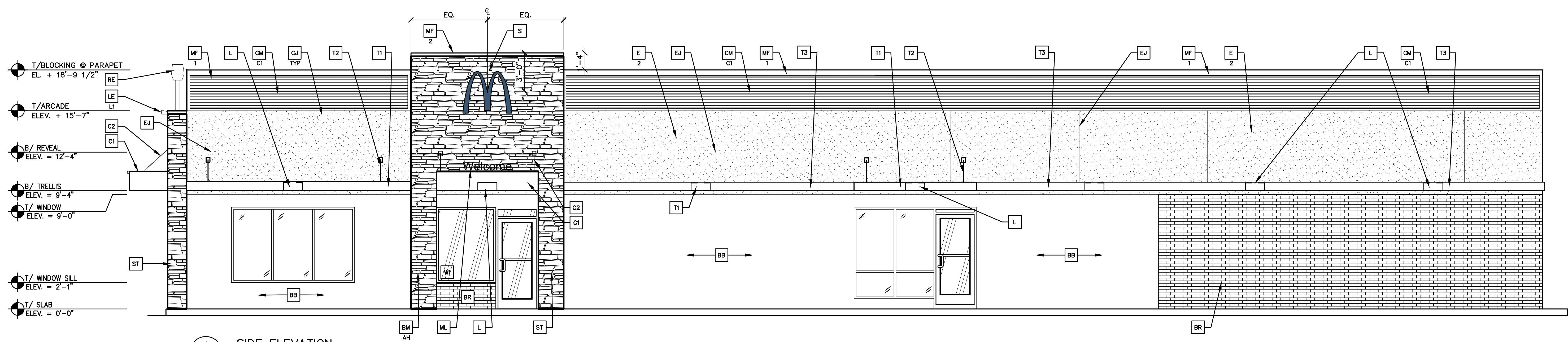
PROJECT NUMBER: 15-600  
 DRAWN BY: JMK  
 CHECKED BY: CL

ISSUED DATE: 05/25/2015

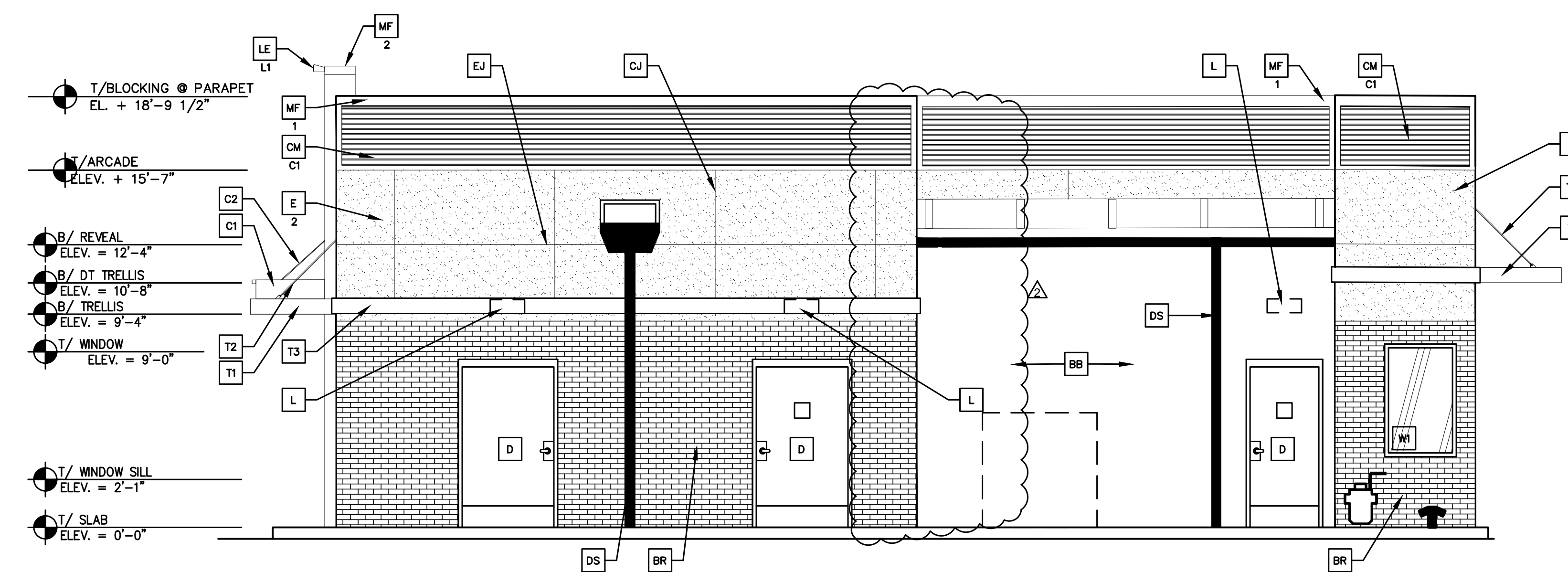
SHEET TITLE:  
**EXTERIOR ELEVATIONS**

SHEET NUMBER:

**A2.1**



**1 SIDE ELEVATION**  
 A2.1 1/4" = 1'-0"



**2 REAR ELEVATION**  
 A2.1 1/4" = 1'-0"

**KEY NOTES:**

- |   |  |   |  |  |
|---|--|---|--|--|
| <p><b>BB</b> EXISTING BASE BUILDING BRICK PAINTED MINK BM-2112-10</p> <p><b>BR</b> FACEBRICK</p> <p><b>B1</b> -COLOR: B1 = "MODULAR SUNGIO" BLENDED BRICK OR EQUAL (MATCH EXISTING BRICK)</p> <p><b>C1</b> ALUMINUM CANOPY SYSTEM (COLOR: GOLD)</p> <p><b>C2</b> ALUMINUM CANOPY TIE-BACK SYSTEM</p> <p><b>CJ</b> CONTROL JOINT</p> <p>X - TYPE: 1 = EIFS - SEE DETL 8/A4.1</p> | <p><b>CM</b> CORRUGATED METAL PANEL - SEE 7/A5.0</p> <p>C1 -COLOR: C1 = "CITYSCAPE" BY METAL-ERA</p> <p><b>D</b> EXISTING ALUMINUM GUTTER AND DOWNSPOUT - PAINT TO MATCH COLOR OF SURROUNDING MATERIAL</p> <p><b>DS</b> EXISTING ALUMINUM GUTTER AND DOWNSPOUT - PAINT TO MATCH COLOR OF SURROUNDING MATERIAL</p> <p><b>DS</b> NEW ALUMINUM SCUPPER &amp; DOWNSPOUT - PAINT TO MATCH COLOR OF SURROUNDING MATERIAL</p> | <p><b>E</b> EXTERIOR INSULATION FINISH SYSTEM (E.I.F.S.)</p> <p>X -COLOR: 2 = BENJAMIN MOORE MINK BM-2112-10</p> <p><b>EJ</b> EXPANSION JOINT, SEE DETAIL 7/A4.1</p> <p><b>L</b> LIGHT FIXTURE (WALL SCONCE) - SEE ELECTRICAL</p> <p><b>LE</b> ACCENT LIGHTING - SEE ELECTRICAL</p> <p><b>L1</b> -LED LIGHT: L1 = UP AND DOWN FIXTURE L2 = DOWN ONLY FIXTURE L3 = INTEGRAL CANOPY FIXTURE L4 = UP ONLY FIXTURE</p> <p><b>ML</b> METAL LETTERING - BY OTHERS</p> | <p><b>MF</b> METAL FASCIA - COLOR TO MATCH CORRUGATED METAL PANEL - SEE 2/A5.0</p> <p>1 -TYPE: 1 = PRE-FAB ANCHOR-TITE FASCIA 2 = PRE-FAB CUSTOM ARCADE FASCIA 3 = PRE-FAB MASONRY CAP FASCIA</p> <p><b>PB</b> PIPE BOLLARD - PAINTED YELLOW</p> <p><b>RE</b> ROOF CAP ELEMENT BY OTHERS</p> <p><b>T1</b> ALUMINUM TRELLIS SYSTEM</p> <p><b>T2</b> TRELLIS TIE-BACK SYSTEM</p> <p><b>T3</b> ALUMINUM TRELLIS 2" x 8" WALL FASCIA SYSTEM - REFER TO SIM. DETAIL 6 ON SHEET A5.2</p> | <p><b>ST</b> CULTURED STONE, BY BORAL STONE PRODUCTS (McD PFSW BLEND)</p> <p><b>S</b> McDONALD'S SIGNAGE BY OTHERS - UNDER SEPARATE PERMIT.</p> <p><b>SF</b> NEW SPILT FACED CMU BLOCK - MATCH EXISTING BLOCK</p> <p><b>WT</b> EXTERIOR WINDOW ASSEMBLY - TEMPERED GLASS - SEE ASSEMBLY NOTES</p> <p><b>W2</b> DRIVE-THRU WINDOW BY READY ACCESS 600 SERIES, 36" SERVICE HEIGHT WITH TRANSOM - MANUAL OPEN, ELECTRONIC RELEASE</p> <p>XX -SLIDE DIRECTION: RL = RIGHT TO LEFT LR = LEFT TO RIGHT</p> |
|---|--|---|--|--|

**NOTE:**  
 1. EIFS CONTROL JOINTS INSTALLED PER MANUFACTURER'S RECOMMENDATIONS.  
 2. PAINT TRASH CORRAL INCLUDING DOORS, BOLLARDS ETC. TO MATCH MAIN BUILDING COLOR.

**NOTE:**  
**COLOR LEGEND.** (ALL COLORS ARE PER BENJAMIN MOORE PAINTS, U.N.O.)

CHOCOLATE SCHEME	ARCADES	LEDGESTONE - "BIG HORN" OLD COUNTRY BUILDING STONE BY BUILDING STONE PRODUCTS
	BASE BUILDING	BASE COLOR - MINK BM-2112-10