

# PRELIMINARY ENGINEERING PLAN FOR **FOUNDERS OF ORLAND SUBDIVISION** ORLAND PARK, ILLINOIS



50 25 0 50  
SCALE: 1 INCH = 50 FEET



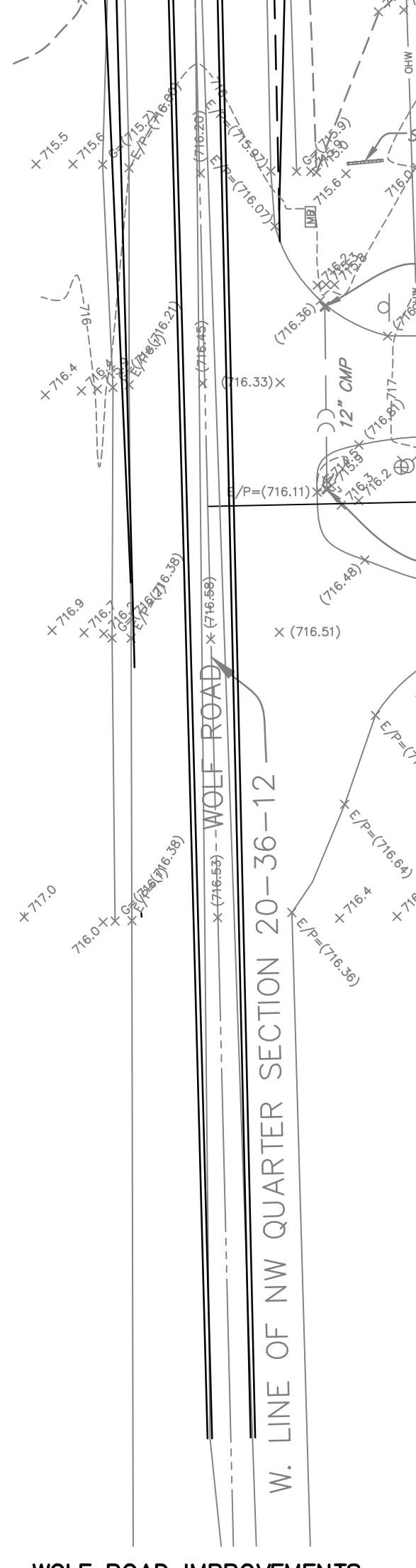
**LOCATION MAP**

LEGAL DESCRIPTION

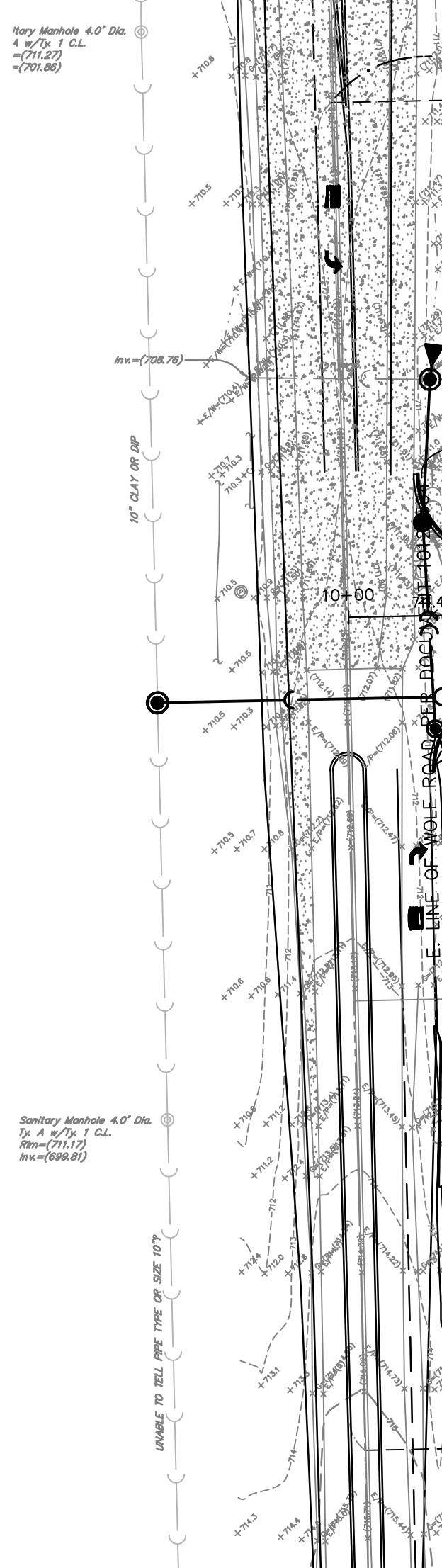
PARCEL 1:  
THE NORTH 10 ACRES OF SOUTH 1/2 OF THE WEST 1/2 OF THE NORTHWEST  
1/4 OF SECTION 20, TOWNSHIP 36 NORTH, RANGE 12 EAST OF THE THIRD  
PRINCIPAL MERIDIAN, IN COOK COUNTY, ILLINOIS.

PARCEL 2:  
THE SOUTH 5 ACRES OF THE NORTH 15 ACRES OF THE SOUTH 1/2 OF THE  
WEST 1/2 OF THE NORTHWEST 1/4 OF SECTION 20, TOWNSHIP 36 NORTH, RANGE  
12, EAST OF THE THIRD PRINCIPAL MERIDIAN, IN COOK COUNTY, ILLINOIS.

**MATCHLINE**

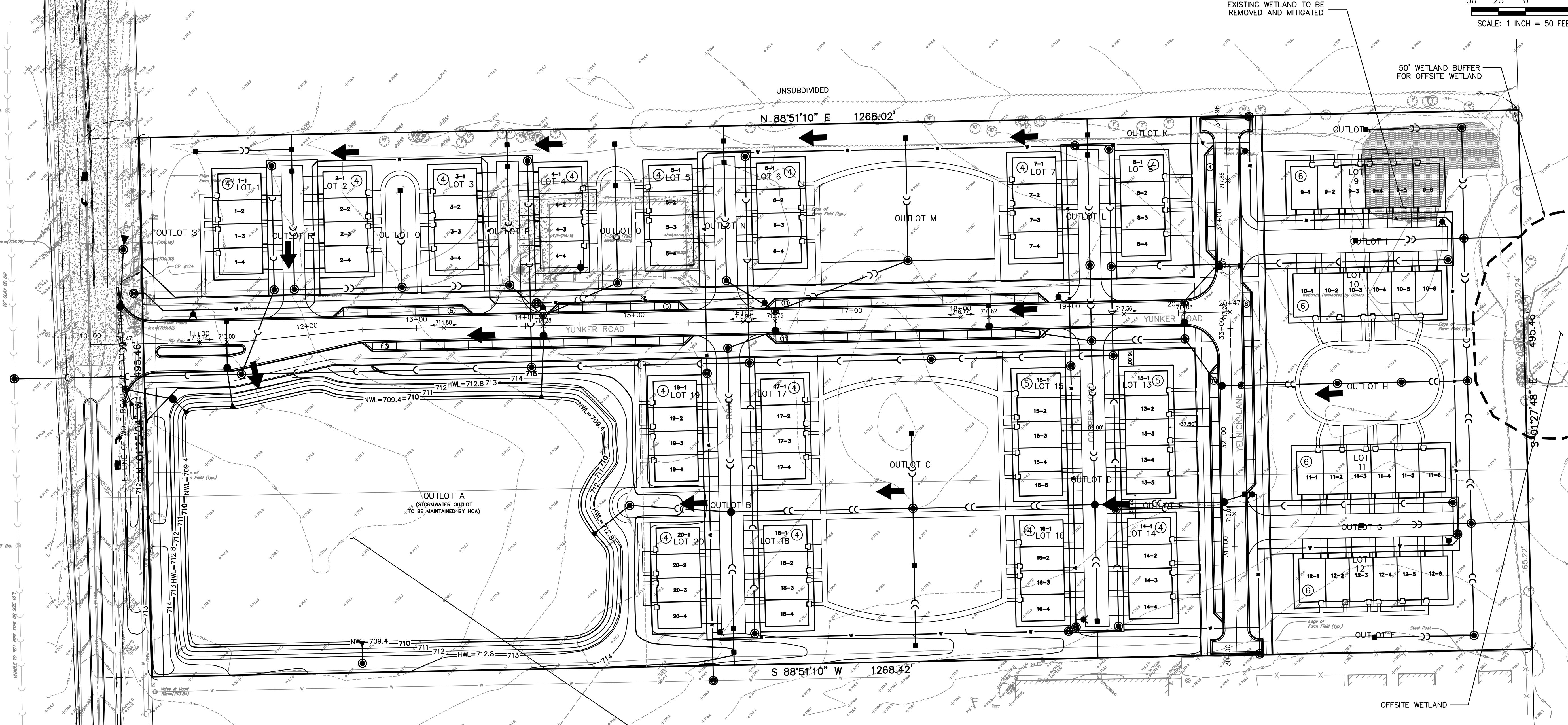
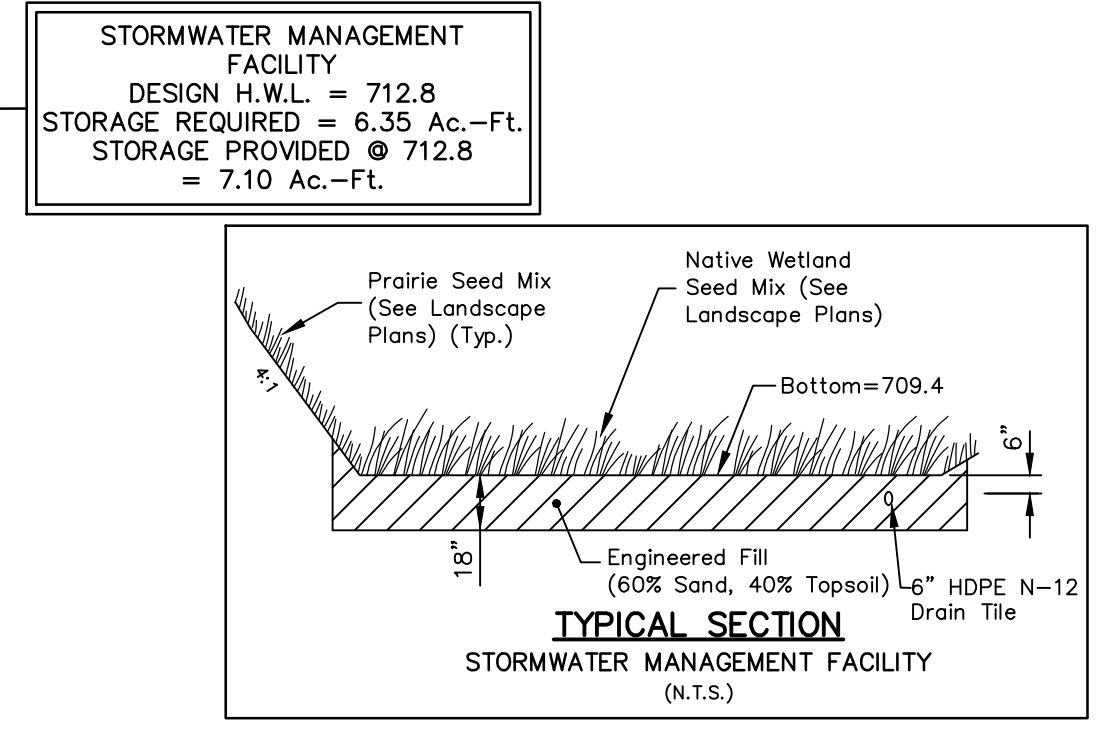
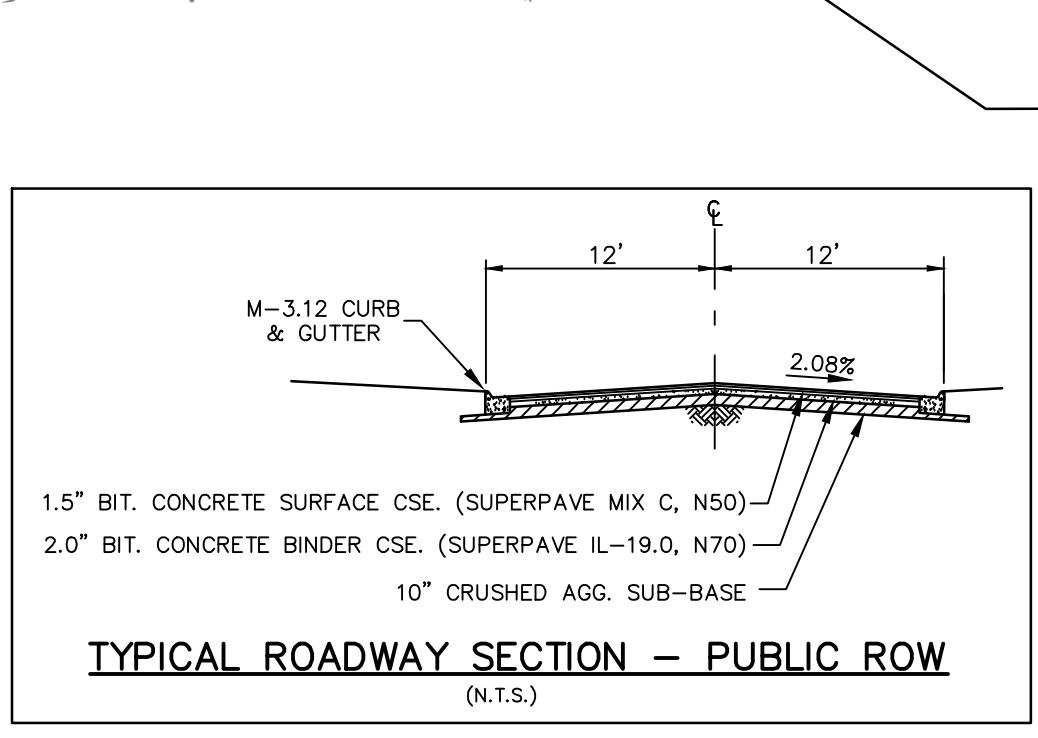


**MATCHLINE**



**LEGEND**

EXISTING	PROPOSED	DESCRIPTION	EXISTING	PROPOSED	DESCRIPTION
(Symbol)	(Symbol)	MANHOLE	(Symbol)	(Symbol)	CONTOURS
(Symbol)	(Symbol)	CATCH BASIN	(Symbol)	(Symbol)	ELEVATIONS
(Symbol)	(Symbol)	INLET	(Symbol)	(Symbol)	STREET LIGHT
(Symbol)	(Symbol)	CLEANOUT	(Symbol)	(Symbol)	WATERMAIN PROTECTION
(Symbol)	(Symbol)	SLOPE INLET BOX	(Symbol)	(Symbol)	SILT FENCE INLET PROTECTOR
(Symbol)	(Symbol)	HEADWALL	(Symbol)	(Symbol)	TEMPORARY STRAW BALE DITCH CHECK
(Symbol)	(Symbol)	END SECTION	(Symbol)	(Symbol)	SILT FENCE DITCH CHECK
(Symbol)	(Symbol)	STORM SEWER	(Symbol)	(Symbol)	RIP-RAP
(Symbol)	(Symbol)	SANITARY SEWER	(Symbol)	(Symbol)	OVERFLOW ROUTE
(Symbol)	(Symbol)	WATERMAIN	(Symbol)	(Symbol)	
(Symbol)	(Symbol)	VALVE & BOX	(Symbol)	(Symbol)	
(Symbol)	(Symbol)	WATER VALVE IN VAULT	(Symbol)	(Symbol)	
(Symbol)	(Symbol)	FIRE HYDRANT			



PREPARED BY:  
**CEMCON, Ltd.**  
Consulting Engineers, Land Surveyors & Planners  
2280 White Oak Circle, Suite 100  
Aurora, Illinois 60502-9675  
PH: 630.862.2100 FAX: 630.862.2199  
E-Mail: info@cemcon.com Website: www.cemcon.com

PREPARED FOR:  
**BRIDGE STREET PROPERTIES**  
P.O. BOX 5726  
NAPERVILLE, IL. 60567

DISC NO.: 847.010 FILE NAME: PREOVER  
DRAWN BY: MAM FLD. BK. / PG. NO.: BK./PG.  
COMPLETION DATE: 9-27-2022 JOB NO.: 847.010  
XREF : ENG-TOPO-CD3 PROJECT MANAGER : MAM  
REV: 08-31-2023 /MAM REV: 11-22-2023 /MAM  
REV: 10-11-2023 /MAM REV: 05-21-2024 /JC  
REV: 12-06-2023 /MAM

Copyright © 2023 Cemcon, Ltd. All rights reserved.