

**GENERAL NOTES:**

Plant material shall be nursery grown and be either balled and burlapped or container grown. Sizes and spreads on plant list represent minimum requirements. The requirements for measurement, branching and ball size shall conform to the Code of Standards (ANSI Z60) - 1990 by the American Association of Nurserymen, Inc.

Grading shall provide slopes which are smooth and continuous. Positive drainage shall be provided in all areas.

Quantity lists are supplied as a convenience. However, the contractor should verify all quantities. The drawings shall take precedence over the lists.

All plant species specified are subject to availability. Material shortages in the landscape industry may require substitutions. All substitutions must be approved by the Village, Landscape Architect and Owner.

Contractor shall verify location of all underground utilities prior to digging. Contractor shall report any discrepancies in the field to the Landscape Architect and/or Owner.

All perennial, ornamental grass, groundcover and annual beds shall be topdressed with a minimum of three inches (3") of mulch. The topdressing shall be worked into the soil to a minimum depth of nine inches (9") by the use of a cultivating machine. Upon completion perennial & ornamental grasses shall be mulched with an additional one inch (1") layer of shredded wood mulch. Annuals & groundcovers shall be covered with an additional two inch (2") layer of mulch.

All other planting beds and tree stucars shall be mulched with a minimum of four inches (4") of shredded wood mulch.

All bed lines and tree stucars shall require a hand spaced edge between lawn and mulched areas.

Seed mixes shall be applied mechanically so that the seed is incorporated into the top one-half inch (1/2") of the seed bed. The seed shall then be covered with the specified straw blanket (installed per manufacturer's specs).

ANY EXISTING PARKWAY TREES WILL BE PRESERVED OR TRANSPLANTED ELSEWHERE ON THE SITE PERIMETER

**LANDSCAPE CALCULATIONS/ REQUIREMENTS**

**SOUTH PROPERTY LINE (BUFFER D) CALC. 111 LF**

REQUIRED	PROVIDED
CANOPY	0
UNDERSTORY	6
SHRUBS	50

**WEST PROPERTY LINE (BUFFER C) CALC. 240 LF**

REQUIRED	PROVIDED
CANOPY	11
UNDERSTORY	4
SHRUBS	50

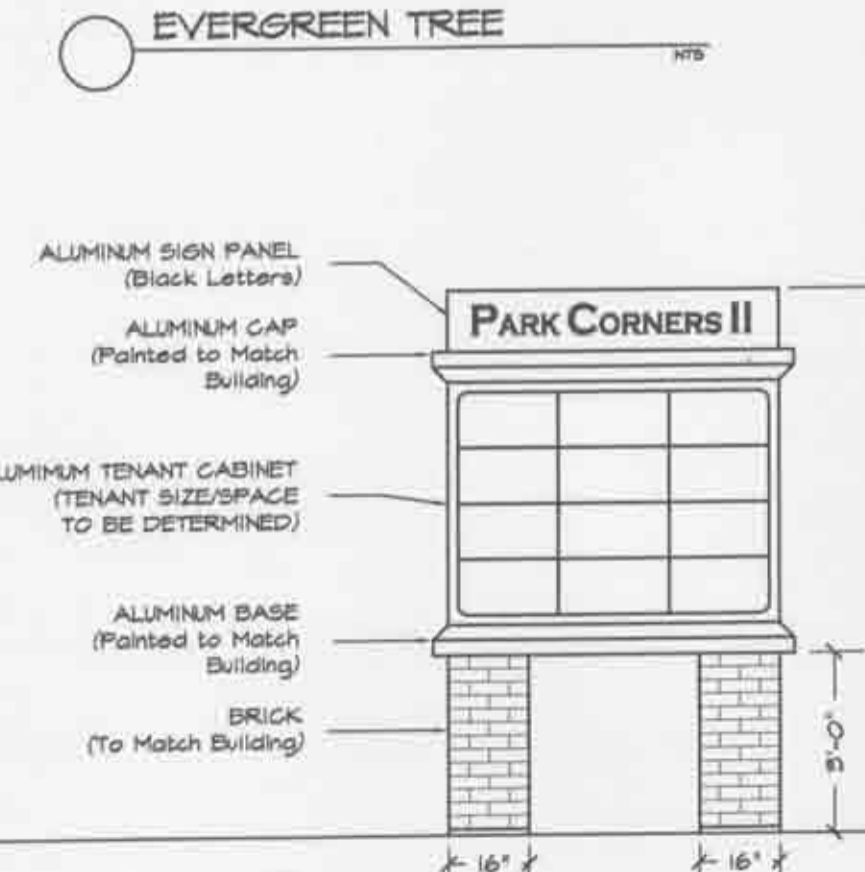
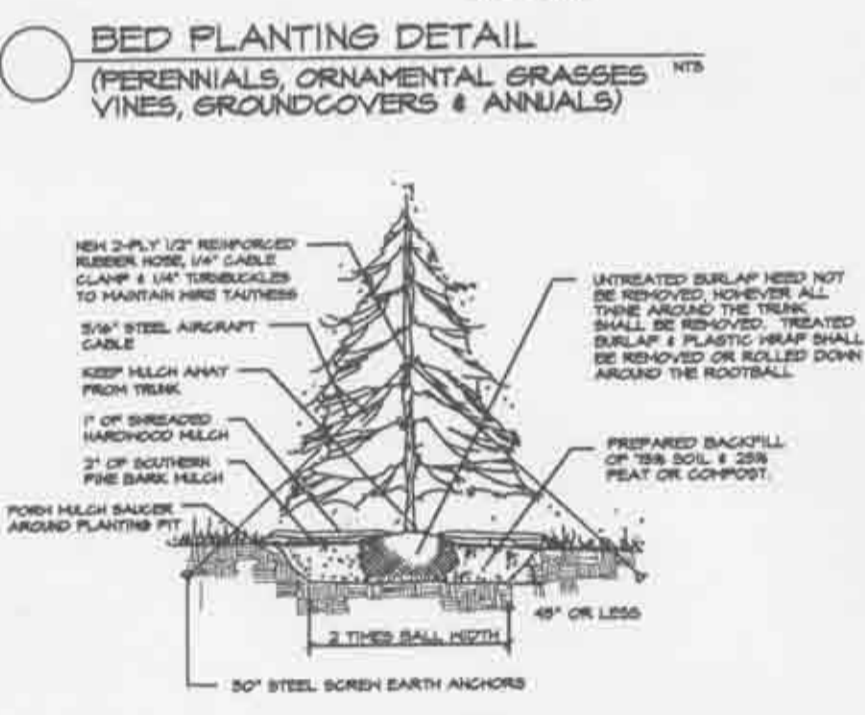
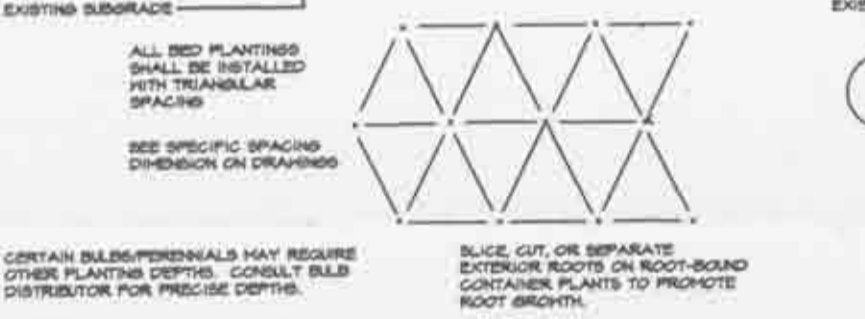
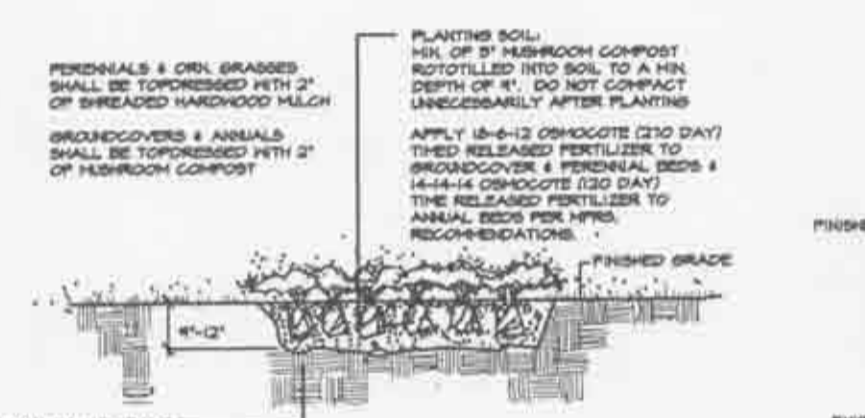
**EAST PROPERTY LINE (BUFFER D) CALC. 740 LF**

REQUIRED	PROVIDED
CANOPY	5
UNDERSTORY	1
SHRUBS	24

**NORTH PROPERTY LINE (BUFFER D) CALC. 240 LF**

REQUIRED	PROVIDED
CANOPY	4
UNDERSTORY	2
SHRUBS	18

NOTE: THE MAJORITY OF THE TREES & SHRUBS HAVE BEEN UP-SIZED (EVGREEN TREES TO 10", SHADE TREES TO 3 1/4")



**SHRUBS**

**DECIDUOUS TREE**

**EVERGREEN TREE**

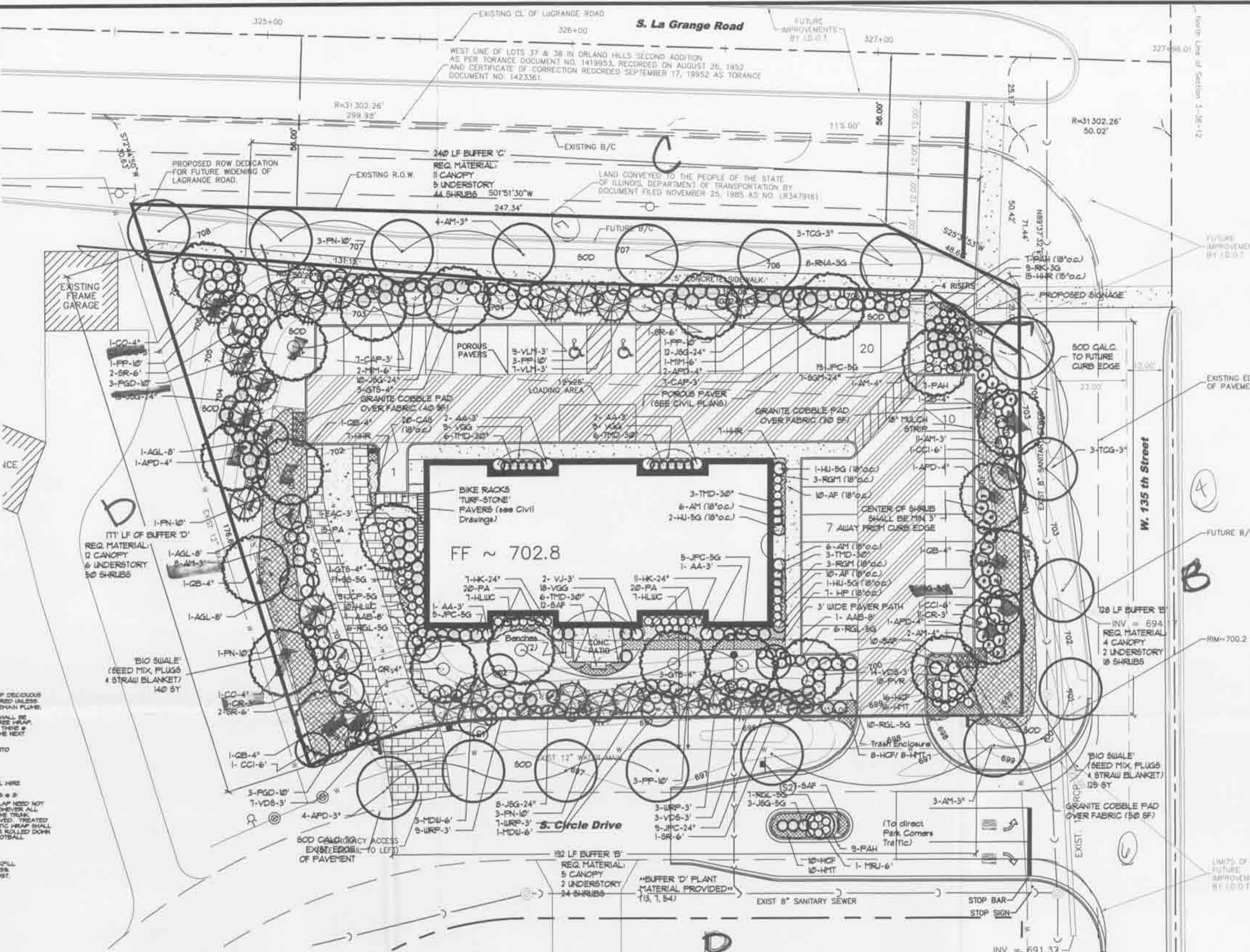
**LEGEND**

- SHADE TREE (PARKWAY)
- SHADE (OTHER)
- ORNAMENTAL TREE
- EVERGREEN TREE
- LARGE DECIDUOUS SHRUBS
- DWARF DECIDUOUS SHRUBS / SHRUB ROSES
- EVERGREEN SHRUBS
- ORNAMENTAL GRASSES
- PERENNIALS/GROUNDCOVERS
- BIO-SWALE (SHALE MIX, PLUGS & STRAW BLANKET)

**BIO-SWALE PLUG LIST**

BOTANICAL / (COMMON) NAME	QUANTITY
40 Calamagrostis canadensis (Bluejoint Grass)	
40 Carex stipata (Axi-Fruited Sedge)*	
40 Carex vulpinoidea (Fox Sedge)*	
40 Eupatorium maculatum (Spotted Joe Pye)*	
40 Hibiscus palustris (Swamp Rose Mallow)*	
40 Iris virginica striata (Blue Flag)*	
40 Panicum virgatum (Switchgrass)	
40 Penstemon digitalis (Foxglove Penstemon)	
40 Ratanhia pinnata (Yellow Coneflower)	
40 Rudbeckia fulgida speciosa (Shiny Black-Eyed Susan)	
40 Rudbeckia subtomentosa (Sweet Black-Eyed Susan)	
40 Silphium laciniatum (Prairie Dock)	
40 Sorghastrum nutans (Indian Grass)	
40 Spartina pectinata (Prairie Cordgrass)*	
600 *Note: Plant in lowest locations (swale center & surrounding inlets)	
Plugs to be installed in like species groups of 10 plants minimum within the groups @ 24" o.c. spacing	

CALL JULIE 48 HOURS BEFORE YOU DIG 1-800-892-0123 TOLL FREE Open 24 Hours Every Day



**PLANT LIST**

KEY	QUAN	BOTANICAL NAME	COMMON NAME	SIZE / TYPE
<b>DECIDUOUS SHADE TREES</b>				
APD	5	Acer p. 'Deborah'	Deborah Norway Maple	4"BB
APD	4	Acer p. 'Deborah'	Deborah Norway Maple	3"BB
AM	3	Acer f. 'Marmo'	Marmo Maple	4"BB
AM	1	Acer f. 'Marmo'	Marmo Maple	3"BB
CO	2	Celtis occidentalis	Hackberry	4"BB
GTB	1	Gleditsia l. 'Skyline'	Skyline Honeylocust	4"BB
QB	5	Quercus bicolor	Swamp White Oak	4"BB
QR	1	Quercus rubra	Red Oak	4"BB
TCG	6	Tilia c. 'Glenleven'	Glenleven Little Leaf Linden	3"BB
<b>DECIDUOUS ORNAMENTAL TREES</b>				
AGL	3	Alnus glutinosa	European Black Alder	8"BBcl.
AAB	2	Anelanchier g. 'Autumn Brilliance'	Autumn Brilliance Serviceberry	8"BBcl.
CCI	3	Crataegus crua-galli v. inermis	Thornless Cockspur Hawthorn	6"BBcl.
MDW	4	Malus 'Donald Wyman'	Donald Wyman Crabapple	6"BBcl.
MIM	3	Malus 'Indian Magic'	Indian Magic Crabapple	6"BBcl.
MRJ	1	Malus 'Red Jewel'	Red Jewel Crabapple	6"BBcl.
SR	6	Syringa reticulata	Japanese Tree Lilac	6"BBcl.
<b>EVERGREEN TREES</b>				
PP	3	Picea pungens	Colorado Green Spruce	10"BB
PGD	6	Picea glauca densata	Black Hills Spruce	10"BB
FN	6	Pinus nigra	Austrian Pine	10"BB
<b>DECIDUOUS SHRUBS &amp; SHRUB ROSES</b>				
AA	6	Aronia arbutifolia	Red Chokeberry	3"BB
AM	18	Aronia melanocarpa	Black Chokeberry	3"BB
CAP	14	Cornus scottifolia	Common Spicebush	3"BB
CR	20	Cornus racemosa	Gray Dogwood	3"BB
EAC	1	Euconymus a. 'Comptius'	Dwarf Burning Bush	3"BB
HK	17	Hypericum kalmianum	Kalm St. John's Wort	24"VG
HU	4	Hydrangea p. 'Unique'	Unique Hydrangeas	5G
RGL	28	Rhus a. 'Gro-Low'	Gro-Low Sumac	24"VG
RGM	6	Ribes a. 'Green Mound'	Green Mound Alpine Currant	24"VG
RK	9	Rosa 'Knockout'	Knockout Shrub Rose	3 Gal.
RVA	8	Rosa 'Noelma'	Flower Carpet Appleblossom Rose	3 Gal.
SGM	1	Spiraea b. 'Goldmound'	Goldmound Spirea	24"VG
<b>EVERGREEN SHRUBS</b>				
SP	17	Spiraea J. 'Shibori'	Shibori Spirea	24"VG
VDB	46	Viburnum d. 'Symesveidi'	Chicago Lustre Viburnum	3"BB
VJ	2	Viburnum x juddii	Judd Viburnum	3"BB
VLH	16	Viburnum l. 'Mohican'	Mohican Nannyberry Viburnum	3"BB
WRP	15	Weigela f. 'Red Prince'	Red Prince Old Fashion Weigela	3"BB
<b>PERENNIALS &amp; GROUNDCOVERS</b>				
AF	20	Astilbe x s. 'Fanal'	Fanal Astilbe	1 Gal.
AM	12	Alchemilla mollis	Lady's Mantle	1 Gal.
HCF	34	Hemerocallis 'Chicago Fire'	Chicago Fire Daylily	1 Gal.
HHR	28	Hemerocallis 'Happy Returns'	Happy Returns Daylily	1 Gal.
HLC	24	Hemerocallis 'Little Wine Cup'	Little Wine Cup Daylily	1 Gal.
HMT	34	Hemerocallis 'Mary Todd'	Mary Todd Daylily	1 Gal.
HP	7	Hosta 'Patriot'	Patriot Plantain-lily	1 Gal.
SAF	28	Sedum 'Autumn Fire'	Autumn Fire Stonecrop	1 Gal.
VGG	36	Veronica s. 'Goodness Grows'	Goodness Grows Spike Speedwell	1 Gal.
<b>MATERIAL &amp; LABOR LIST:</b>				
QUAN.	ITEM	DESCRIPTION		
2	Benches	By Owner		
16'0" SF	Paver Walk (3' wide)	Type by Owner		
16'0" SF	Soil	Kentucky Bluegrass Blend (mineral base)		
10	CY	Mulch		
9	CY	Shredded Hardwood Bark		
12	SF	Compost (Hard Waste or Mulchroom)		
26	5Y	Native Seed Mix		
26	5Y	Straw Blanket		
6	02	Native Plant Plugs		

© 2007 Ives/Ryan Group, Inc. Copyright 2007 Ives/Ryan Group, Inc., all rights reserved. The design and any and all ideas contained herein are the sole property of the Ives/Ryan Group, Inc. Reproduction of the design or concept embodied herein in any form, in whole or in part, without the consent of the Ives/Ryan Group, Inc. is prohibited.

**REVISIONS**

1 PER REVISED ENGINEERING	3-28-07
2 PER REVISED ENGINEERING	6-13-07
3 PER REVISED ENGINEERING/ VILLAGE COMMENTS	8-9-07

**PARK CORNERS II**  
Orland Park, ILLINOIS

BOARD APPROVED  
CASE NO. 2007-0720  
DATE 11-5-07  
W/CONDITIONS  
W/O CONDITIONS

**McNAUGHTON DEVELOPMENT, INC.**

11900 Southwest Hwy.  
Suite 101  
Palos Park, Illinois 60464

**Ives/Ryan Group, Inc.**  
Land Planning  
Landscape Architecture  
Golf Course Architecture  
1801-A North Mill Street  
Naperville, IL 60563  
Phone: (630) 717-0726  
Fax: (630) 717-0875  
E-Mail: info@ivesryangroup.com

**CONCEPTUAL LANDSCAPE PLAN**

PROJECT NO.: L6302  
JOB NO.: 6812A

DATE: 3-23-07  
SCALE: 1"=20'  
PLANNER: MT  
DRAWN BY: MT  
CHECKED: L-1