

Code Name	Scientific Name	Common Name	Size	Quantity
Rubi	Rudbeckia hirta	Black-eyed susan	1-Gal	27
Spiru	Spiraea bumalda	Bumald spiraea 'Goldmound'	24" Ht.	32
Clins	Clematis Nepeta Subsessilis	Catmint	1-Gal	27
Pycac	Pyrus calleryana 'Chanticleer'	Chanticleer Pear	2 1/2" - 3"-Gal	8
Juch	Juniperus chinensis	Chinese juniper gold coast	24" Width	19
Pipu	Picea pungens 'Glauca'	Colorado blue spruce	8' - 10' Ht.	24
Eualc	Euonymus alata 'Compacta'	Compact burning bush	30" Ht.	41
Tamd	Taxus media 'Densiflora'	Densiflora yew	24" Ht.	12
Pigc	Picea glauca 'Conica'	Dwarf alberta spruce	5' Ht.	4
Pahd	Penstemon alpestris 'Hamelii'	Dwarf fountain grass	3-Gal	19
Peaf	Perovskia atriplicifolia 'Filigran'	Filigran russian sage	1-Gal	42
Azau	Azalea	Azalea 'Assorted'	3-Gal	6
Hofw	Hosta 'Frances williams'	Frances william hostas	1-Gal	24
Tieg	Tilia cordata 'Green Spire'	Green Spire Linden	2 1/2" - 3"-Gal	7
Moisg	Miscanthus sinensis 'Gracillimus'	Maiden grass	3-Gal	7
Spmk	Syringa x patula 'Miss kim'	Miss kim lilac	30" Ht.	32
Lotm	Thuja occidentalis 'Techny'	Mission Arborvitae	6' Ht.	30
Ronw	Rosa nearly wild	Nearly wild rose	2-Gal	9
Macp	Malus candymint 'Prainefire'	Prainefire crab apple	2 1/2" Cal.	3
Beri	Betula nigra	River birch	12" Ht.	7
Rofc	Rosa flower carpet	Rose flower carpet 'Assorted'	2-Gal	36
Masa	Malus sargentii	Sargent Crab	7" Ht.	14
Misis	Miscanthus sinensis 'Silverfeder'	Silver feather grass	3-Gal	18
Rhgi	Rhus aromatica	Gro-Low sumac	5-Gal	40
Hesto	Heimerocallis 'Stella de Oro'	Stella de Oro daylily	1-Gal	48
Tamt	Taxus media 'Tautoni'	Tautoni yew	24" Ht.	22
Vila	Viburnum lantana	Mohican viburnum	36" Ht.	41
Fosu	Forsythia 'Meadowlark'	Meadowlark forsythia	4" Ht.	6

**LANDSCAPE NOTES**

REFER TO PLAT OF SURVEY FOR LEGAL DESCRIPTION, BOUNDARY DIMENSIONS AND EXISTING CONDITIONS.

REFER TO ARCHITECTURAL PLANS FOR BUILDING MIX, SIZE AND FOOTPRINT.

REFER TO ENGINEERING PLANS FOR DETENTION CALCULATIONS, UTILITY LOCATIONS, TOPOGRAPHIC INFORMATION AND THE LIKE.

PRELIMINARY LANDSCAPE PLAN ALL AREAS AND DIMENSIONS ARE APPROXIMATE.

ALL PLANT MATERIAL ON THIS PLANTING PLAN REPRESENTS THE INTENTION AND INTENSITY OF THE PROPOSED LANDSCAPE MATERIAL. THE EXACT SPECIES AND LOCATIONS MAY VARY IN THE FIELD DO TO MODIFICATIONS IN THE SITE IMPROVEMENTS AND THE AVAILABILITY OF PLANT MATERIAL AT THE TIME OF INSTALLATION. ANY SUCH CHANGES MUST FIRST BE APPROVED BY THE VILLAGE IN WRITING.

ALL PLANT MATERIAL SHALL BE PLANTED WITH A MINIMUM OF SIX INCHES OF ORGANIC SOIL AND A MINIMUM 3" DEPTH DECORATIVE STONE W/FABRIC & PLASTIC EDGING.

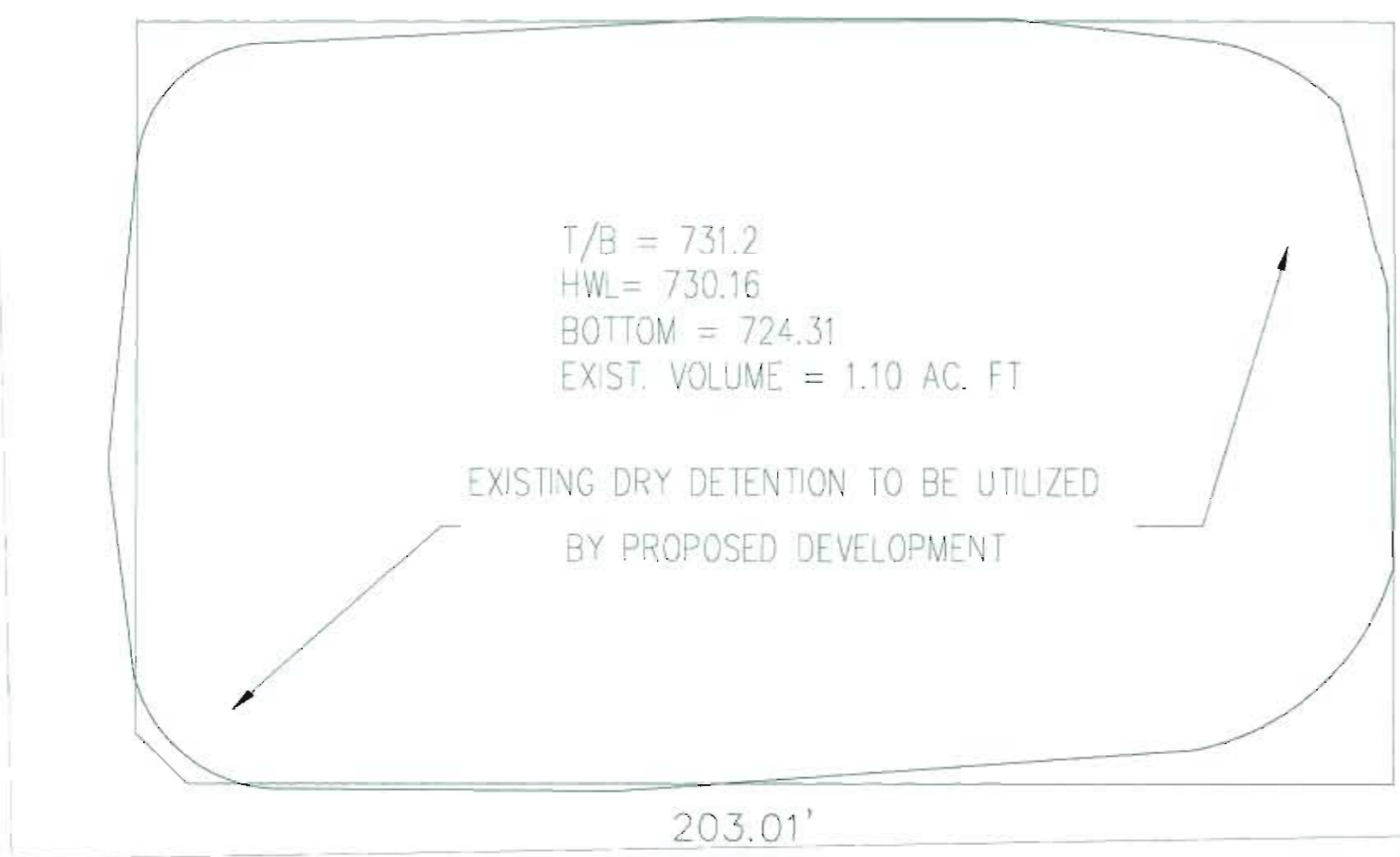
ALL PLANTS ARE BALLED AND BURLAPPED, UNLESS OTHERWISE NOTED.

THIS LANDSCAPE PLAN ASSUMES THE SITE WILL BE PREPARED WITH TOP SOIL SUITABLE FOR THE ESTABLISHMENT OF THE LANDSCAPE MATERIAL PRESENTED ON THIS PLAN. IF ADDITIONAL TOP SOIL IS REQUIRED IT IS UP TO THE LANDSCAPE CONTRACTOR ON THE PROJECT TO PROVIDE, SPREAD AND PREPARE THE SITE AS NEEDED FOR THE IMPLEMENTATION OF THIS LANDSCAPE PLAN.

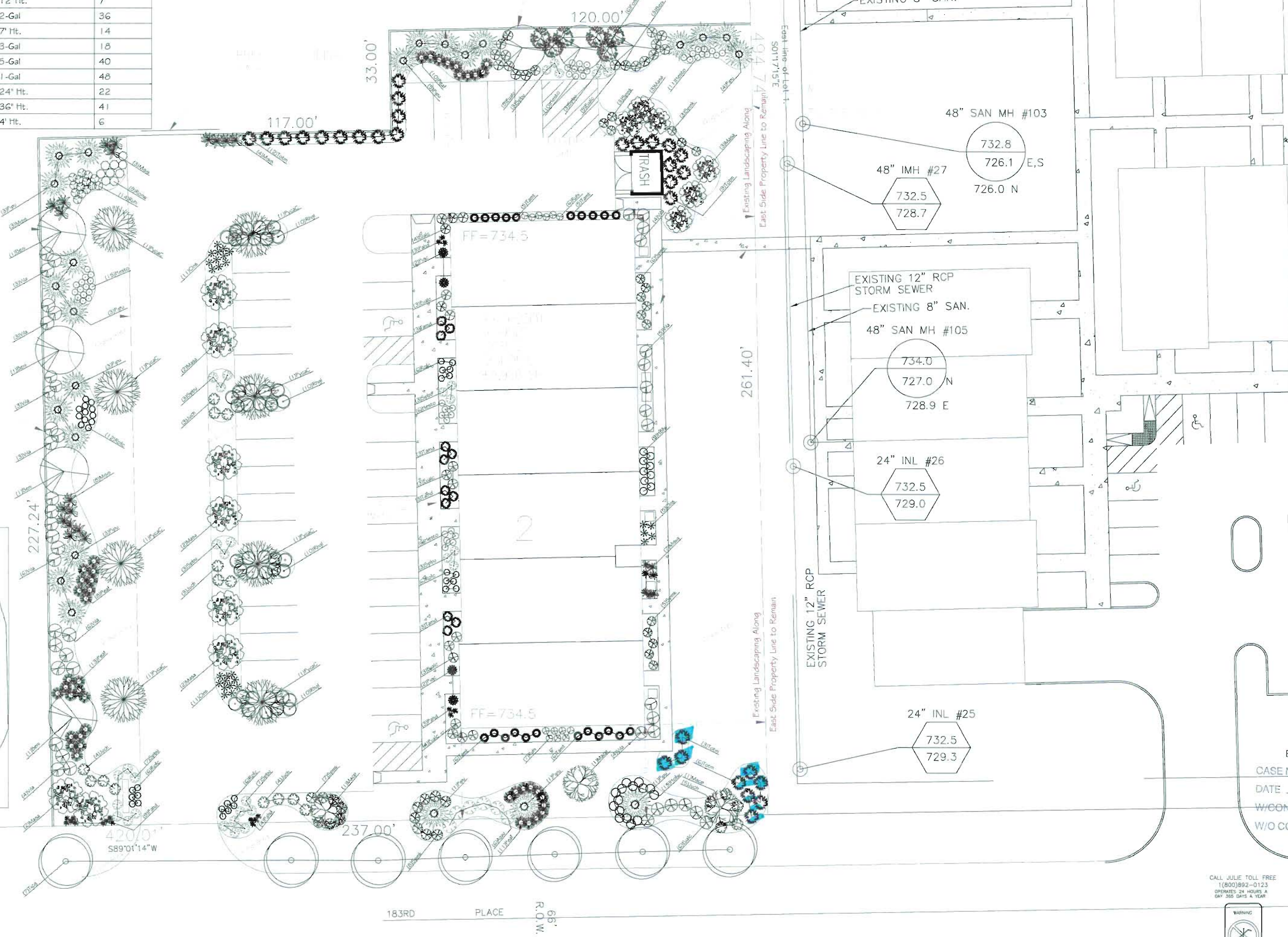
ALL PLANT MATERIALS SHALL CONFORM TO THE LATEST EDITION OF THE AMERICAN STANDARDS FOR NURSERY STOCK AS PUBLISHED BY THE AMERICAN ASSOCIATION OF NURSERYMEN, INC. 230 SOUTHERN BUILDING, WASHINGTON DC 20005 (ANSI Z60.1)

INSTALL KENTUCKY BLUE GRASS IN ALL GRASS AREAS

IRRIGATION SHALL BE INSTALLED IN COMPLIANCE WITH VILLAGE REQUIREMENTS



LOT 1  
GOLDEN EAGLE PARK  
DOCUMENT NO. R2000073181



**MIDWEST**  
LANDSCAPE DESIGN  
INSTALLATION • MAINTENANCE

18316 Distinctive Dr.  
Orland Park, IL 60467  
Voice: 708.478.1515  
Fax: 708.479.1800

**NOTES:**

ALL PLANT MATERIAL ON THIS PLANTING PLAN REPRESENTS THE INTENTION AND INTENSITY OF THE PROPOSED LANDSCAPE MATERIAL. THE EXACT SPECIES AND LOCATIONS MAY VARY IN THE FIELD DO TO MODIFICATIONS IN THE SITE IMPROVEMENTS AND THE AVAILABILITY OF PLANT MATERIAL AT THE TIME OF INSTALLATION.

PRELIMINARY LANDSCAPE PLAN ALL AREAS AND DIMENSIONS ARE APPROXIMATE.

**Revisions:**

11.28.08 (REV. #1)	G.B.
12.16.08 (REV. #2)	G.B.
01.21.09 (REV. #3)	G.B.



**Landscape Plan**  
Office Building 6-Unit  
183rd Place West of Wolf  
Orland Park, Illinois

PREPARED FOR:  
B.D. DISTINCTIVE CORP/MEANIES

CASE NO.:  
DATE:  
W/CONDITIONS  
W/O CONDITIONS

DRAWN BY: G.B.  
CHECKED BY: B.N.  
NO: NA  
DATE: 8.01.08  
SCALE: 1" = 20'

SHEET  
1 - 1  
2 OF 3

© Copyright. This Drawing is the Property of Midwest Landscape Design