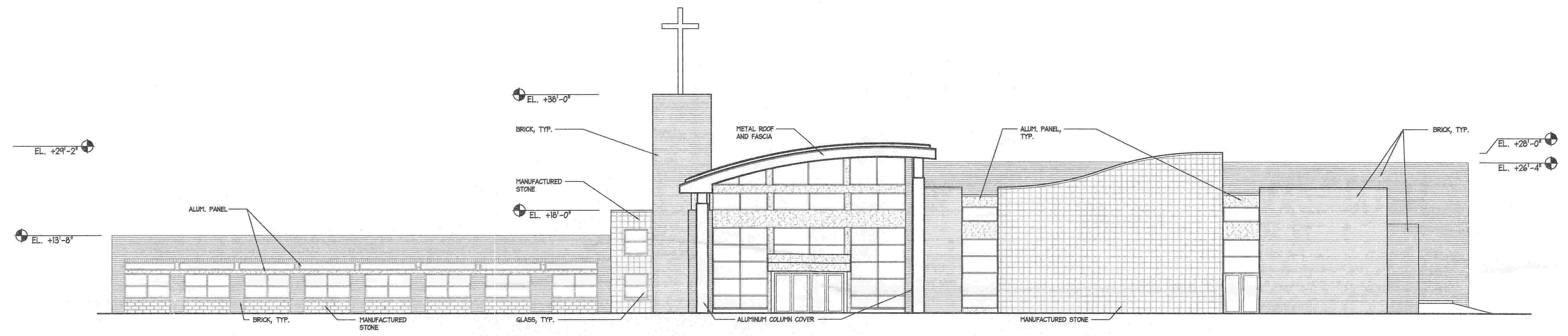
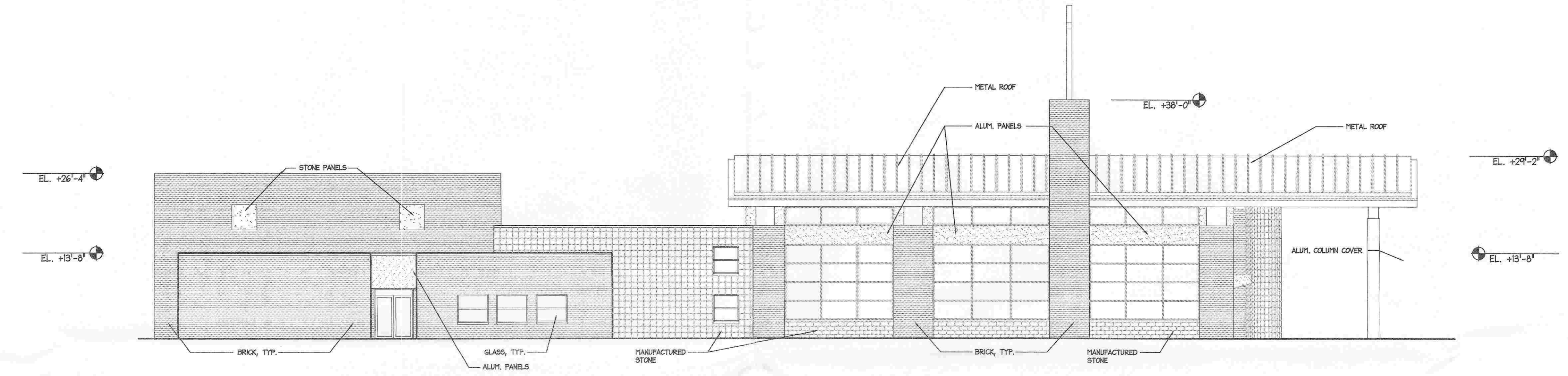


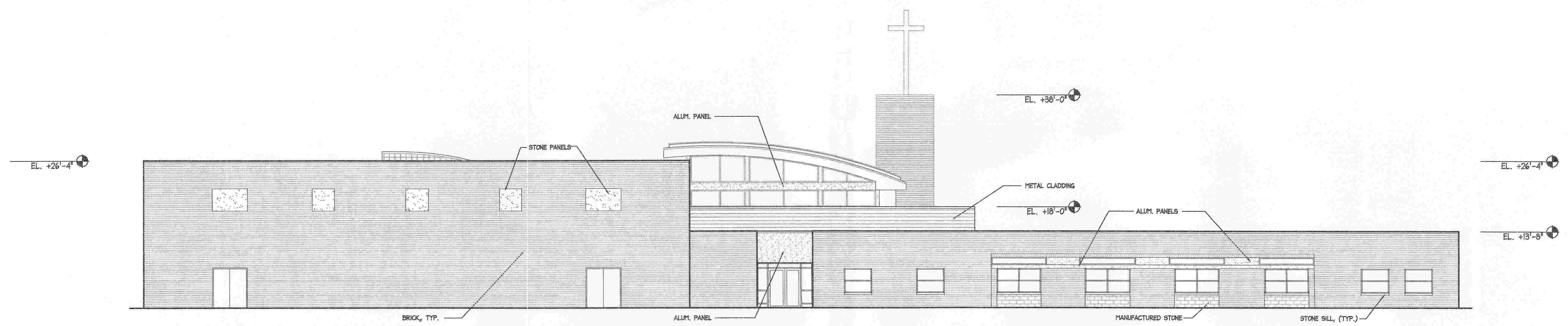
ARCHITECTURAL RESOURCE CORPORATION RESERVES COPYRIGHT & OTHER RIGHTS RESTRICTING THESE DOCUMENTS TO THE ORIGINAL SITE OR PURPOSE FOR WHICH THEY WERE PREPARED. REPRODUCTIONS, CHANGES, OR ASSIGNMENTS ARE PROHIBITED.



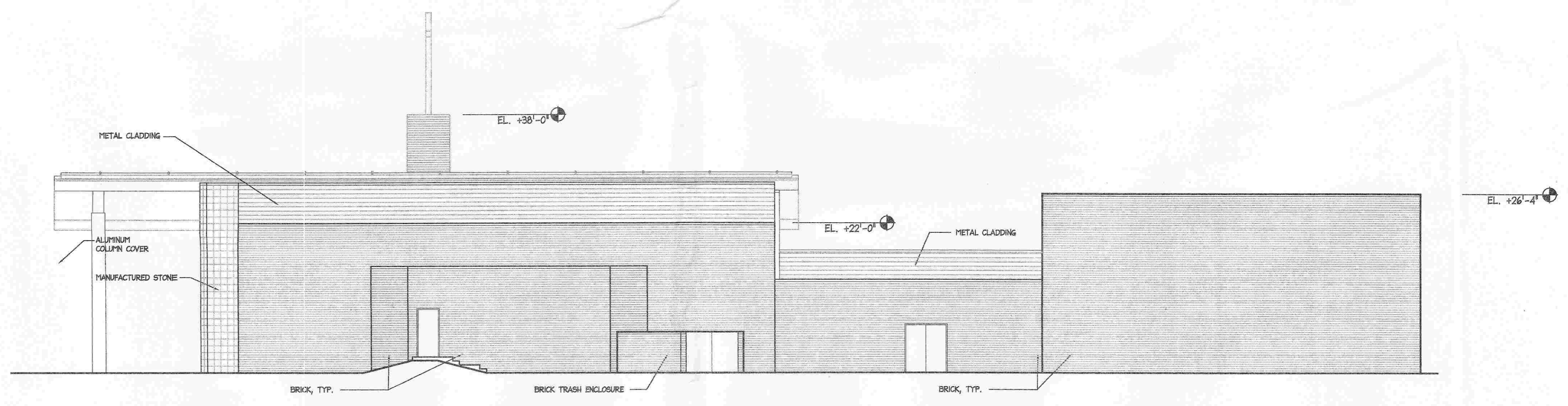
NORTH ELEVATION
3/32" = 1'-0"



EAST ELEVATION
3/32" = 1'-0"



SOUTH ELEVATION
3/32" = 1'-0"



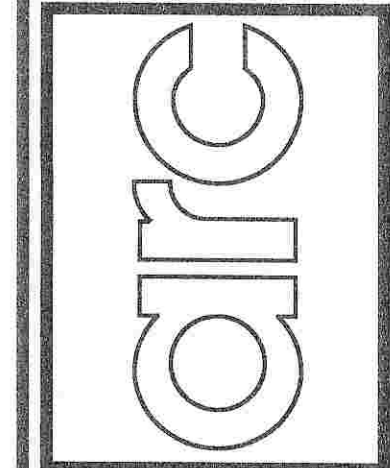
WEST ELEVATION
3/32" = 1'-0"

| NO. | DATE | REVISION |
|-----|------|----------|
| | | |
| | | |
| | | |

| NO. | DATE | REVISION |
|-----|----------|----------------------|
| 1 | 01-23-09 | PER VILLAGE ENGINEER |
| 2 | 02-02-09 | PER VILLAGE STAFF |
| 3 | 02-25-09 | PER VILLAGE STAFF |

| | | |
|--|--|--|
| | | |
|--|--|--|

architectural resource corporation
ARCHITECTS • INTERIOR DESIGNERS • PLANNERS • CONSTRUCTION MANAGERS
10075 W LINCOLN HIGHWAY • FRANKFROT, ILLINOIS 60423 • (708) 343-1123



PROJECT NO.
A823A
DATE
03/16/2009
© ARC 2009

EXTERIOR ELEVATIONS - PHASE 1
STONE CHURCH
10737 W. ORLAND PARKWAY
ORLAND PARK, ILLINOIS 60467

A2