



Residential
Commercial
ALTA

PLAT OF ANNEXATION

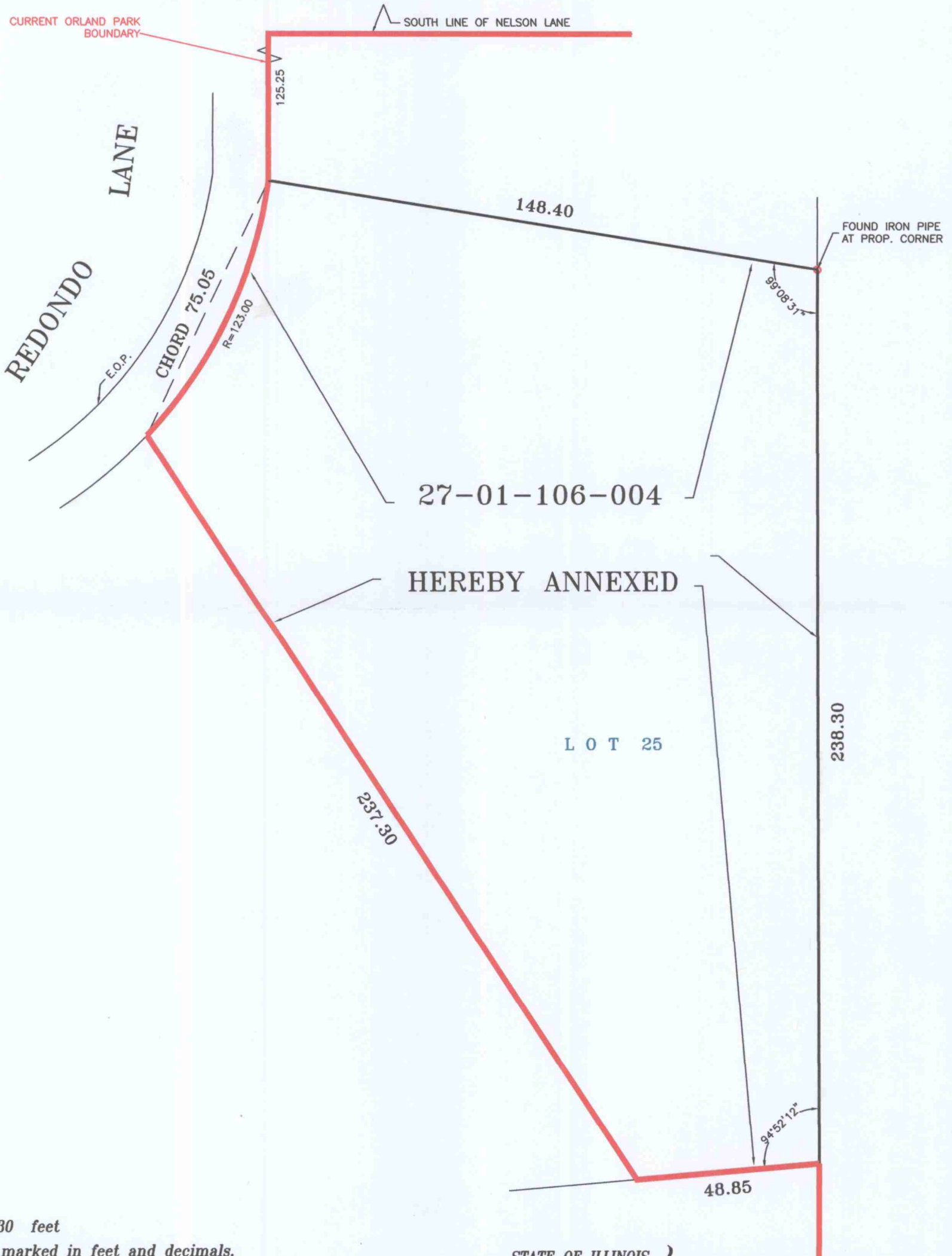
Studnicka and Associates, Ltd.

Topographical
Condominium
Site Plans

Tel. 815 485-0445
Fax 815 485-0528

17901 Haas Road
Mokena, Illinois 60448

LOT 25 IN LAGUNA WOODS, BEING A SUBDIVISION OF THE SOUTH 1/2 OF THE WEST 1/2 OF THE NORTHWEST 1/4 OF SECTION 1, TOWNSHIP 36 NORTH, RANGE 12, EAST OF THE THIRD PRINCIPAL MERIDIAN, (EXCEPT THAT PART TAKEN FOR 80TH AVENUE), IN COOK COUNTY, ILLINOIS.



Scale: 1" = 30 feet

Distances are marked in feet and decimals.

Ordered by: Russ Engel

Order No.: 13-1-24

Compare all points before building by same and at once report any difference. For building lines, restrictions, or easements not shown hereon, refer to abstract, deed or ordinance.

Field work completed: 6/27/08

Drawn by: S. K.

Proofed by: T.S.

Design Firm Registration # 184-002791

STATE OF ILLINOIS }
COUNTY OF WILL } ss

Studnicka and Associates, Ltd., an Illinois Land Surveying Corporation does hereby certify that this professional service prepared for the purpose of annexing the property shown and described to the village of Orland Park.

Mokena, IL. January 21, A.D. 2013

by

License No. 3304 Expires 11/30/14