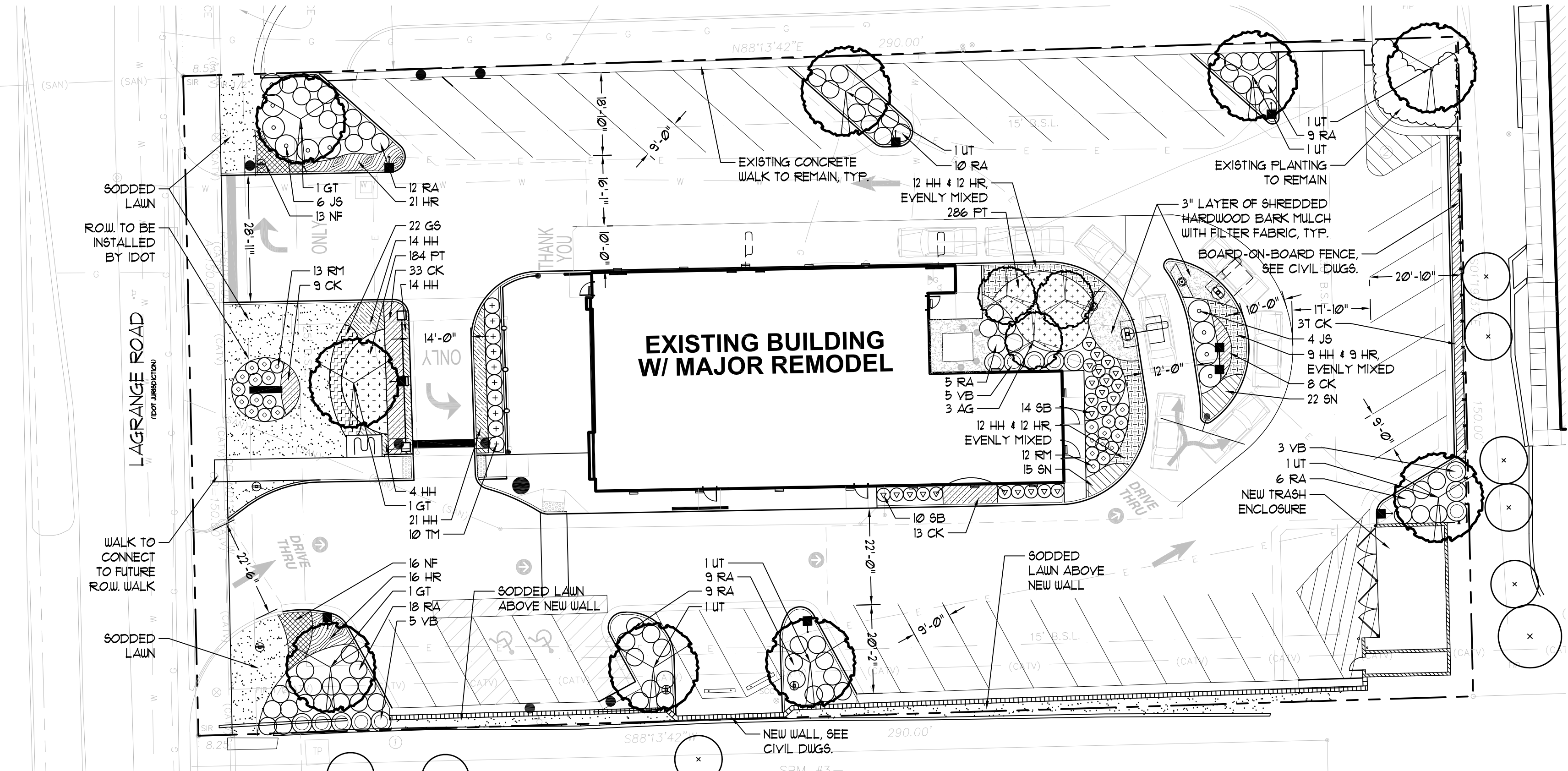


GENERAL NOTES

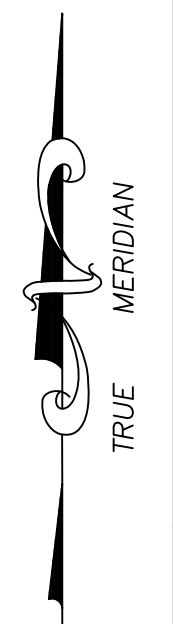
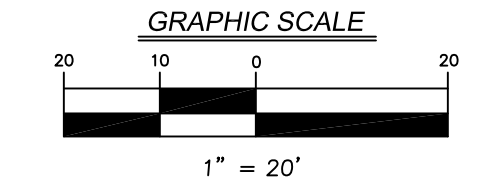
- ALL DIMENSIONS ARE TO BE VERIFIED IN THE FIELD BY THE CONTRACTOR. NOTIFY THE LANDSCAPE ARCHITECT OF ANY DISCREPANCIES PRIOR TO STARTING WORK.
- THE CONTRACTOR SHALL HAVE A MINIMUM OF FIVE YEARS EXPERIENCE WITH PROJECTS OF SIMILAR SIZE AND TYPE.
- SPECIES AND SIZES OF PLANTS LISTED IN THE PLANT LIST ARE SUBJECT TO AVAILABILITY AT TIME OF INSTALLATION. IF SUBSTITUTIONS ARE REQUIRED, THE CONTRACTOR SHALL SUBMIT REQUESTS TO THE LANDSCAPE ARCHITECT FOR APPROVAL.
- QUANTITIES SHOWN ON THE DRAWING AND IN THE PLANT LIST ARE PROVIDED ONLY FOR THE CONTRACTOR'S CONVENIENCE. THE NUMBER OF PLANT SYMBOLS SHOWN ON THE DRAWINGS SUPERCEDE ALL QUANTITIES PROVIDED. THE CONTRACTOR SHALL VERIFY ALL PLANT QUANTITIES ON THE DRAWINGS AND NOTIFY THE LANDSCAPE ARCHITECT OF ANY DISCREPANCIES PRIOR TO INSTALLATION. THE CONTRACTOR IS RESPONSIBLE FOR INSTALLING ALL PLANTS PER THE PLANT SYMBOLS SHOWN ON THE DRAWINGS.
- ALL OVERHEAD AND UNDERGROUND UTILITIES ARE TO BE LOCATED PRIOR TO DIGGING OR EXCAVATION. IF UTILITIES OR OTHER OBSTRUCTIONS ARE DISCOVERED TO CONFLICT WITH GRADING, PLANT OR MATERIALS PLACEMENT, NOTIFY THE LANDSCAPE ARCHITECT SO THAT ADJUSTMENTS MAY BE MADE PRIOR TO PROCEEDING.
- CONTRACTOR SHALL TAKE ALL PRECAUTIONS TO PROTECT EXISTING PLANTS, FENCES, SITE FEATURES AND PAVING TO REMAIN. ANY DAMAGE TO THESE EXISTING AREAS OR FEATURES SHALL BE REPLACED BY THE CONTRACTOR AT THEIR EXPENSE. REPLACED FEATURES AND PLANTS SHALL BE WARRANTED BY THE CONTRACTOR FOR A PERIOD OF ONE YEAR.
- PROVIDE POSITIVE DRAINAGE AT ALL TIMES. DO NOT OBSTRUCT THE NATURAL OR ENGINEERED DRAINAGE FLOW PATTERN. NOTIFY THE LANDSCAPE ARCHITECT OF ANY DRAINAGE CONCERNS.
- IMPORTED TOPSOIL FOR THIS PROJECT SHALL BE FRIABLE LOAM OR SANDY LOAM, COMPRISED OF BETWEEN 20% AND 50% SILT, 10% AND 25% CLAY, AND 30% AND 60% SAND. THE pH LEVEL SHALL BE BETWEEN 6.0 AND 7.2 AND THE ORGANIC MATTER CONTENT SHALL BE BETWEEN 3% AND 6%. TOPSOIL SHALL BE FREE OF SEEDS, STONES, LARGE CLUMPS, ROOTS, LEAVES AND DEBRIS, AND SHALL NOT BE DELIVERED WHILE IN A FROZEN OR MUDDY CONDITION. CONTRACTOR SHALL PROVIDE A RECENT SOIL TEST ANALYSIS FOR ALL SOIL TO BE USED. THE ANALYSIS MUST INCLUDE THE INFORMATION REQUIRED ABOVE. IF TESTED TOPSOIL REQUIRES AMENDMENTS TO COMPLY WITH REQUIREMENTS, CONTRACTOR SHALL AMEND THE TOPSOIL, RE-TEST AND RESUBMIT THE ANALYSIS FOR APPROVAL PRIOR TO BRINGING THE TOPSOIL ON SITE.
- EXISTING TOPSOIL FROM ON SITE THAT HAS BEEN STOCKPILED MAY BE USED IF IT MEETS THE REQUIREMENTS FOR IMPORTED TOPSOIL. THIS INCLUDES CONDUCTING SOIL TEST ANALYSIS' AND ADDING AMENDMENTS AS NEEDED SO THAT THE SOIL COMPLIES WITH THE REQUIREMENTS.
- ALL PLANT MATERIAL MUST BE SPECIMEN QUALITY, TRUE TO SPECIES AND VARIETY, WITH FULL, DENSE AND HEALTHY FORMS. PLANTS THAT ARE NOT SPECIMEN QUALITY WILL NOT BE ACCEPTED. ALL PLANTS MUST HAVE BEEN LOCALLY GROWN AT A STATE INSPECTED AND CERTIFIED NURSERY, LOCATED WITHIN 50 MILES OF THE PROJECT SITE.
- ALL DECIDUOUS AND EVERGREEN TREES AND SHRUBS THAT ARE 36" HEIGHT OR TALLER ARE TO HAVE FRESHLY DUG BALLED AND BURLAPPED ROOT BALLS WITH SIZES THAT MEET THE STANDARDS OF THE AMERICAN NURSERYMEN'S ASSOCIATION. DECIDUOUS AND EVERGREEN SHRUBS THAT ARE 30" HEIGHT OR LESS MAY EITHER HAVE FRESHLY DUG, BALLED AND BURLAPPED ROOT BALLS OR MAY BE CONTAINER GROWN. ALL PERENNIALS, ORNAMENTAL GRASSES AND GROUNDCOVERS MUST BE CONTAINER GROWN. CONTAINER GROWN MATERIALS SHALL HAVE BEEN GROWN IN THEIR CURRENT CONTAINER FOR A PERIOD OF NO LESS THAN SIX MONTHS.
- ALL TREES SHALL BE INSPECTED BY THE LANDSCAPE ARCHITECT, AT THE NURSERY, PRIOR TO DIGGING. TREES THAT ARE ACCEPTABLE WILL BE SEALED. ALL SEALS APPLIED BY THE LANDSCAPE ARCHITECT MUST REMAIN ON THE TREES AND ARE NOT TO BE REMOVED BY THE CONTRACTOR. ALL TREES MUST HAVE SEALS IN PLACE AT TIME OF ACCEPTANCE OR WILL BE AUTOMATICALLY REJECTED. HEELED-IN TREES WILL NOT BE ACCEPTED WITHOUT PRIOR APPROVAL FROM THE LANDSCAPE ARCHITECT.
- TREES SPECIES SUCH AS BETULA, CELTIS, CERCI, CRATAEGUS, FAGUS, LIRIODENDRON, PLATANUS, POPULUS, PRUNUS, PYRUS, QUERCUS AND TAXODIUM ARE CONSIDERED 'SPRING DIG ONLY' TREES. THE CONTRACTOR MUST HAVE THESE TREES ORDERED, ACCEPTED AND DUG IN EARLY SPRING, FOR SUMMER AND FALL LANDSCAPE INSTALLATIONS.
- ALL SHRUBS 36" HEIGHT OR TALLER ARE TO BE APPROVED BY THE LANDSCAPE ARCHITECT PRIOR TO INSTALLATION. AN EXAMPLE SHRUB MAY BE TAGGED OR PICTURES MAY BE SUBMITTED FOR APPROVAL. ALL SHRUBS THAT DO NOT MATCH THE APPROVED EXAMPLE SHRUB IN SIZE AND FORM, WILL BE REJECTED. ALL OTHER SHRUBS MUST MEET THE MINIMUM SIZES GIVEN IN THE PLANT LIST AND BE SPECIMEN QUALITY. SHRUBS THAT DO NOT MEET THESE GUIDELINES WILL BE REJECTED.
- PLANT MATERIAL SHALL ONLY BE INSTALLED WITHIN THE FOLLOWING DATES:
 DECIDUOUS TREES AND SHRUBS: APR 1 THROUGH NOV 15
 SPRING DIG DECIDUOUS TREES: APR 1 THROUGH OCT 15
 EVERGREEN TREES AND SHRUBS: APR 1 THROUGH NOV 1
 PERENNIALS AND GROUNDCOVERS: MAY 1 THROUGH OCT 15.
- TEST TREE PITS AND PLANT BEDS FOR ADEQUATE DRAINAGE. FILL PLANT PIT WITH 12" OF WATER. IF WATER LEVEL DOES NOT DROP A MINIMUM OF ONE INCH PER HOUR, NOTIFY THE LANDSCAPE ARCHITECT OF DRAINAGE ISSUES.
- PLANTING MIX FOR ALL PLANTINGS SHALL BE AS FOLLOWS. MIXING OF PLANTING MIX COMPONENTS SHALL BE THOROUGHLY BLENDED OUTSIDE THE PLANTING PITS, PRIOR TO PLANTING.
 TREES AND SHRUBS: 80% TOPSOIL, 10% SAND, 10% PINE FINES
 PERENNIALS AND ANNUALS: 10% TOPSOIL, 15% SAND, 15% PINE FINES
- FOR PLANTING MIXES, SAND SHALL BE ANGULAR, COARSE SAND AND PINE FINES SHALL BE 3/8" SOUTHERN PINE BARK FINES.
- EXCAVATE PARKING LOT ISLANDS AND CURBED PLANTERS TO A DEPTH OF 18" AND BACKFILL WITH TOPSOIL. BERM PLANTERS AND ISLANDS TO A HEIGHT OF 6" ABOVE TOP OF CURB.
- THE CONTRACTOR SHALL REQUEST AN INSPECTION OF LANDSCAPE PLANTING UPON SUBSTANTIAL COMPLETION FOR "ACCEPTANCE". REQUEST MUST BE SUBMITTED TO LANDSCAPE ARCHITECT AT LEAST TEN DAYS PRIOR TO ANTICIPATED INSPECTION. UPON INSPECTION THE LANDSCAPE ARCHITECT SHALL PREPARE A PUNCH LIST OF UNACCEPTABLE OR OUTSTANDING ITEMS. AFTER THE ITEMS HAVE BEEN SATISFACTORILY COMPLETED AND REVIEWED, THE LANDSCAPE ARCHITECT WILL RECOMMEND "ACCEPTANCE".
- ALL PLANT MATERIAL SHALL BE GUARANTEED FOR A PERIOD OF ONE YEAR FROM DATE OF "ACCEPTANCE". AT OR NEAR THE END OF THE GUARANTEE PERIOD, THE CONTRACTOR SHALL REQUEST AN INSPECTION OF LANDSCAPE PLANTING FOR "FINAL ACCEPTANCE". REQUEST MUST BE SUBMITTED TO LANDSCAPE ARCHITECT AT LEAST TEN DAYS PRIOR TO ANTICIPATED INSPECTION. UPON INSPECTION THE LANDSCAPE ARCHITECT SHALL PREPARE A PUNCH LIST OF UNACCEPTABLE ITEMS. AFTER THE ITEMS HAVE BEEN SATISFACTORILY REPLACED OR REPAIRED, REVIEWED AND APPROVED, THE LANDSCAPE ARCHITECT WILL RECOMMEND "FINAL ACCEPTANCE".



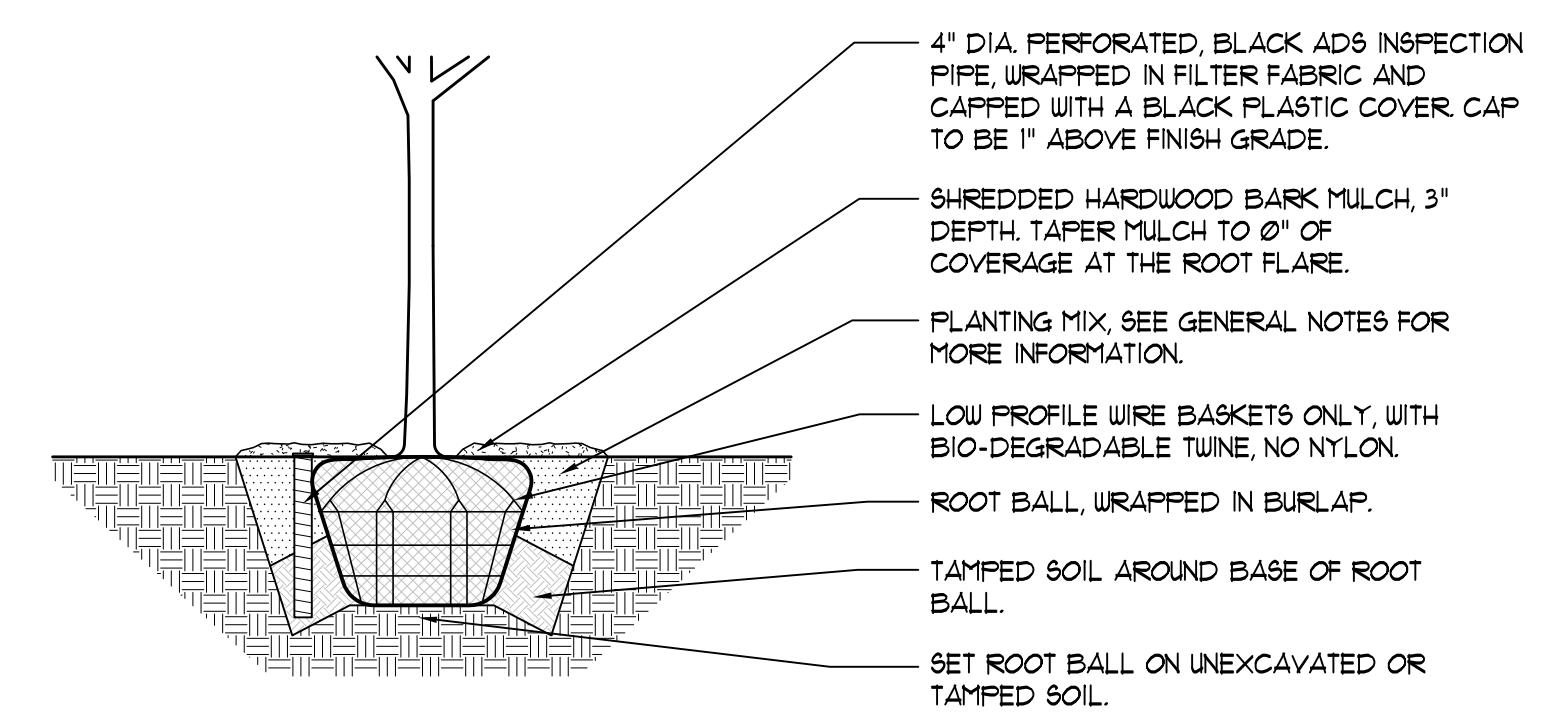
1 LANDSCAPE PLAN
SCALE: 1"=20'-0"

PLANT LIST

CODE	BOTANICAL NAME	COMMON NAME	SIZE	ROOT	TOTAL	ADDITIONAL NOTES
DECIDUOUS TREES						
AG	AMELANCHIER X GRANDIFLORA 'AUTUMN BRILLIANCE'	AUTUMN BRILLIANCE SERVICEBERRY	8' HEIGHT	B 4 B	3	MULTISTEM
GT	GLEDITSIA TRIANCANTHOS 'INERTIS 'SKYLINE'	SKYLINE HONEYLOCUST	3" CALIFER	B 4 B	3	BRANCHED UP 6'
UT	ULMUS CARPINIFOLIA 'MORTON GLOSSY'	TRUMPET ELM	3" CALIFER	B 4 B	6	BRANCHED UP 6'
DECIDUOUS SHRUBS						
RA	RHUS AROMATICA 'GRO-LOW'	GRO-LOW SUMAC	3 GALLON	CONT	18	
RM	ROSA 'MEIDRIFORA'	CORAL DRIFT ROSE	3 GALLON	CONT	25	
SB	SPIRAEA BETULIFOLIA 'TOR'	TOR SPIREA	3 GALLON	CONT	24	
VB	VIBURNUM DETATUM 'CHRISTOM'	BLUE MUFFIN VIBURNUM	30" HEIGHT	B 4 B	13	
EVERGREEN SHRUBS						
J5	JUNIPERUS SABINA 'BUFFALO'	BUFFALO JUNIPER	24" 8PD	CONT	10	
TM	TAXUS X MEDIA 'RANTAN'	RANTAN DENSE YEW	24" HT 4 8PD	B 4 B	10	
PERENNIALS, ORNAMENTAL GRASSES AND GROUNDCOVERS						
CK	CALAMAGROSTIS A. 'KARL FOERSTER'	FEATHER REED GRASS	1 GALLON	CONT	100	SPACED 24" O.C.
G5	GERANIUM SANGUINEUM 'MAX FREI'	MAX FREI BLOODY CRANESBILL	1 GALLON	CONT	22	SPACED 24" O.C.
HH	HEMEROCALLIS 'HAPPY RETURNS'	HAPPY RETURNS DAYLILY	1 GALLON	CONT	86	SPACED 24" O.C.
HR	HEMEROCALLIS 'ROSY RETURNS'	ROSY RETURNS DAYLILY	1 GALLON	CONT	10	SPACED 24" O.C.
NF	NEPETA X FAASSENII	FAASSEN'S CATMINT	1 GALLON	CONT	29	SPACED 24" O.C.
PT	PACHYSANDRA TERMINALIS 'GREEN CARPET'	JAPANESE SPURGE	4" POT	CONT	410	SPACED 12" O.C.
SN	SALVIA NEMEROSA 'MAY NIGHT'	MAY NIGHT SALVIA	1 GALLON	CONT	31	SPACED 18" O.C.

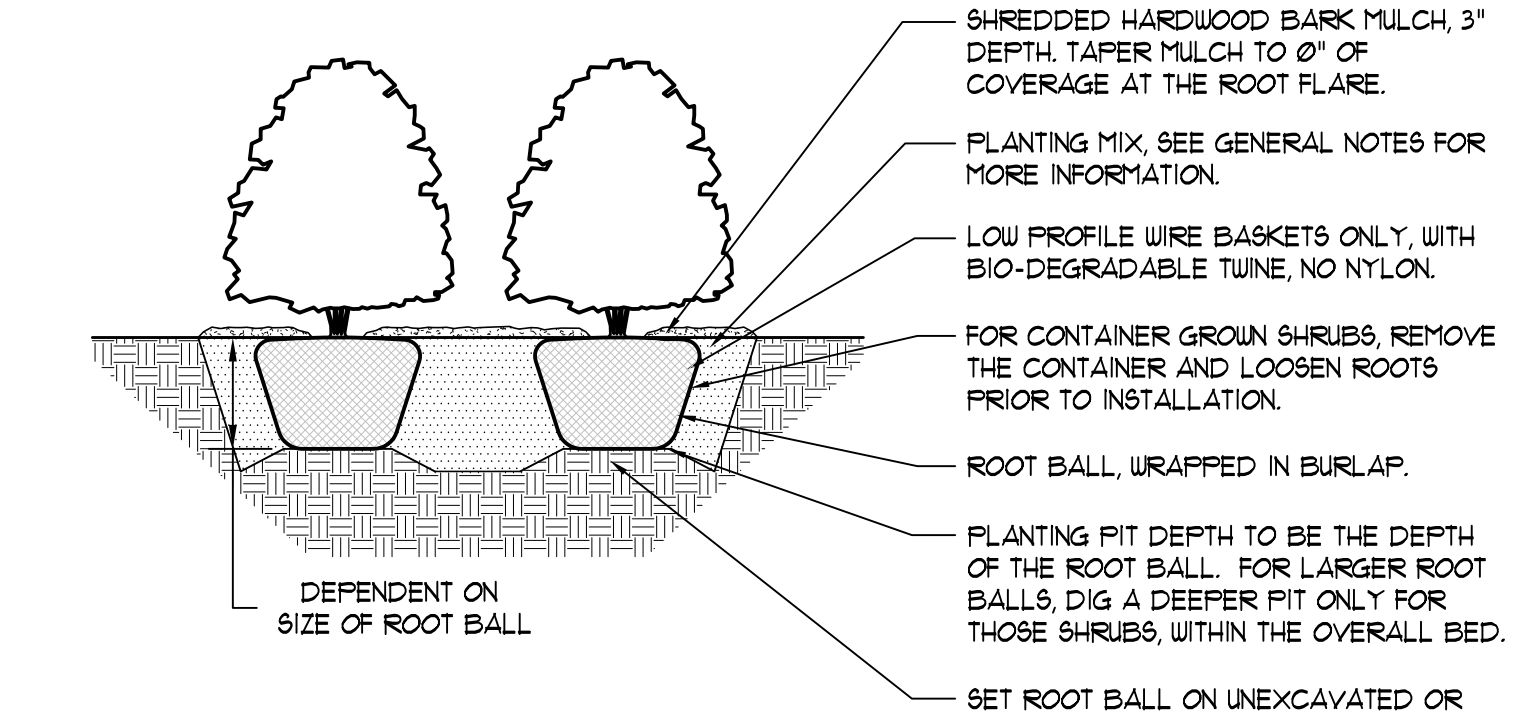


LOCATE ALL UNDERGROUND UTILITIES PRIOR TO DIGGING. TREE PIT WIDTH TO BE EXTENDED 12" AROUND THE ENTIRE ROOT BALL AS SHOWN IN THE DETAIL BELOW. TEST TREE PIT FOR DRAINAGE PRIOR TO INSTALLING TREE. PRUNE OFF ALL DEAD, BROKEN OR SCARRED BRANCHES, AND SHAPE PRUNE AS DIRECTED BY THE LANDSCAPE ARCHITECT. FOR TREES UP TO 4" CALIFER OR 12' HEIGHT, REMOVE APPROXIMATELY 5% - 10% OF THE OVERALL BRANCHING. LOCATE ROOT FLARE IN ROOT BALL, AND SET TREE HEIGHT SO THAT ROOT FLARE IS FLUSH WITH FINISH GRADE. WATER IN THE PLANTING MIX THOROUGHLY, WHILE KEEPING THE TREE FLUSH. STRAIGHTEN TREE IF SETTLING OCCURS. CONTRACTOR TO UN-TIE AND REMOVE TWINE FROM AROUND ROOT FLARE OF TREE AT THE END OF THE WARRANTY PERIOD.



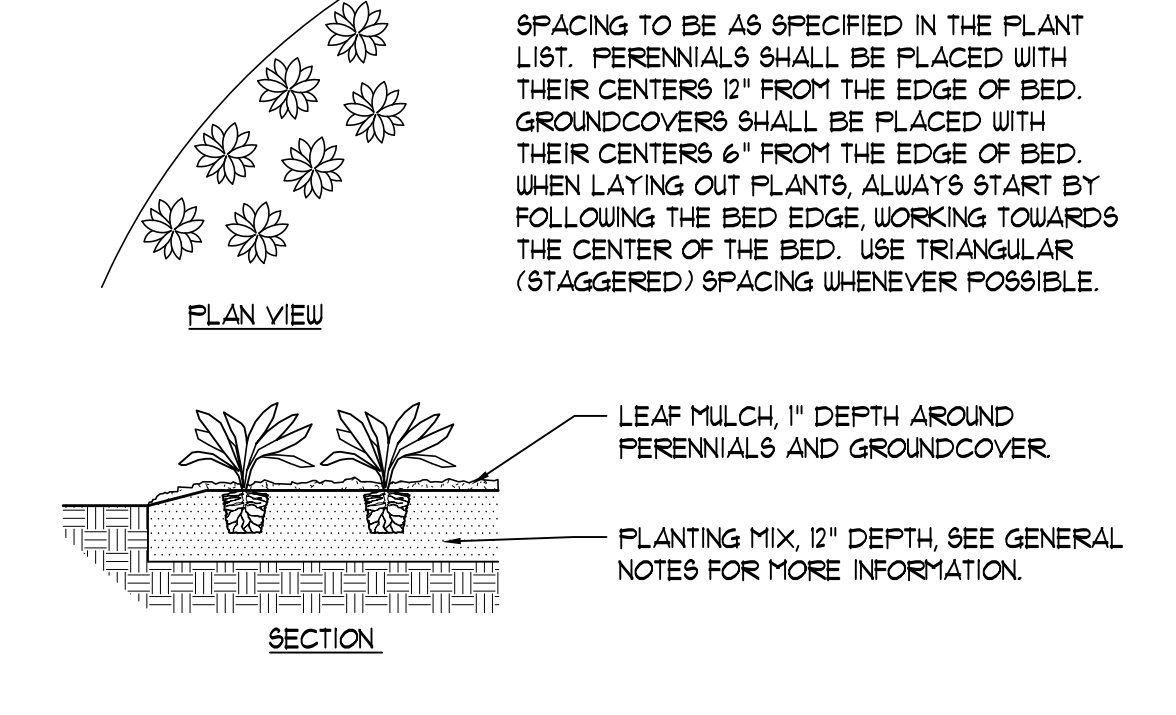
2 DECIDUOUS TREE PLANTING DETAIL
NOT TO SCALE

LOCATE ALL UNDERGROUND UTILITIES PRIOR TO DIGGING. SHRUB PIT WIDTH TO BE EXTENDED 9" AROUND THE ENTIRE ROOT BALL AS SHOWN IN THE DETAIL BELOW. TEST SHRUB PIT FOR DRAINAGE PRIOR TO INSTALLING SHRUB. PRUNE OFF ALL DEAD, BROKEN OR SCARRED BRANCHES, AND SHAPE PRUNE AS DIRECTED BY THE LANDSCAPE ARCHITECT. LOCATE ROOT FLARE IN ROOT BALL, AND SET SHRUB HEIGHT SO THAT ROOT FLARE IS FLUSH WITH FINISH GRADE. WATER IN THE PLANTING MIX THOROUGHLY, WHILE KEEPING THE SHRUB FLUSH. STRAIGHTEN SHRUB IF SETTLING OCCURS. MULCH LIMITS FOR SHRUBS TO EXTEND TO ALL EDGES OF PLANTING BEDS. SEE PLANS FOR BED LAYOUTS. CONTRACTOR TO UN-TIE AND REMOVE TWINE FROM AROUND ROOT FLARE AT THE TIME OF PLANTING.



1 SHRUB PLANTING DETAIL
NOT TO SCALE

LOCATE ALL UNDERGROUND UTILITIES PRIOR TO DIGGING. EXCAVATE ENTIRE PERENNIAL / GROUNDCOVER BED, AND BACKFILL WITH PLANTING MIX AS SPECIFIED. BED HEIGHT IS TO BE 2" ABOVE FINISH GRADE AND WELL DRAINED. MULCH LIMITS FOR PERENNIAL BEDS TO EXTEND TO ALL EDGES OF THE BEDS. SEE PLANS FOR BED LAYOUTS. SEE PLANT LIST FOR PLANT SPACING. GAPS BETWEEN PLANTS SHALL BE NO GREATER THAN THE SPECIFIED SPACING FOR THAT PARTICULAR PLANT.



4 PERENNIAL AND GROUNDCOVER PLANTING DETAIL
NOT TO SCALE

PREPARED BY: **V3 Companies**
7325 James Avenue
Woodridge, IL 60517
630.724.9200 phone
630.724.9202 fax
WWW.V3CO.COM

DATE: 12/09/16
REV: 1

DESCRIPTION: REVISED PER VILLAGE COMMENTS

BY:

PREPARED FOR: **McDonald's USA, LLC**
These drawings and specifications are the confidential and proprietary property of McDonald's USA, LLC and shall not be copied or reproduced without written authorization. The contract documents were prepared by V3 Companies and shall remain the property of V3 Companies. Use of these drawings for reference or example on another project requires the written consent of V3 Companies. V3 Companies is not responsible for the contract documents for use on another project if not authorized.

DRAWN BY: MEM
STD ISSUE DATE: 05/26/16
REVIEWED BY: WS
DATE ISSUED: 05/26/16

TITLE: **LANDSCAPE PLAN**
DESCRIPTION: **MCDONALD'S - ORLAND PARK, ILLINOIS**
SITE ID: 012-0280 | 14445 S LAGRANGE ROAD, ORLAND PARK

SHEET NO.: **L-1.0**
LANDSCAPE PLAN

06240.87MRP - LANDSCAPE PLAN