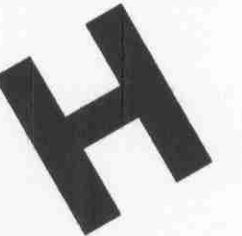


RECEIVED  
OCT 30 2007  
By \_\_\_\_\_

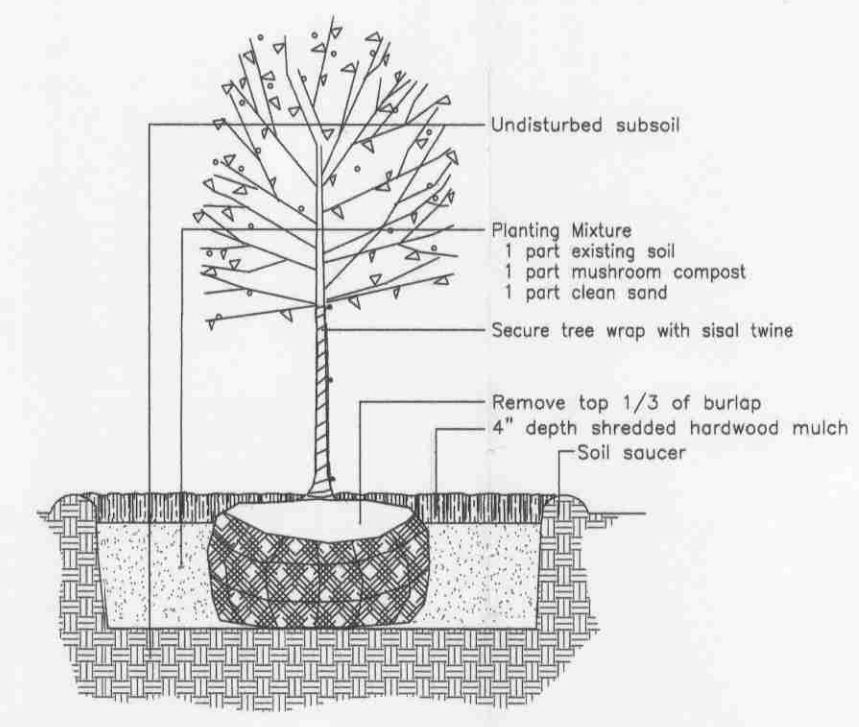
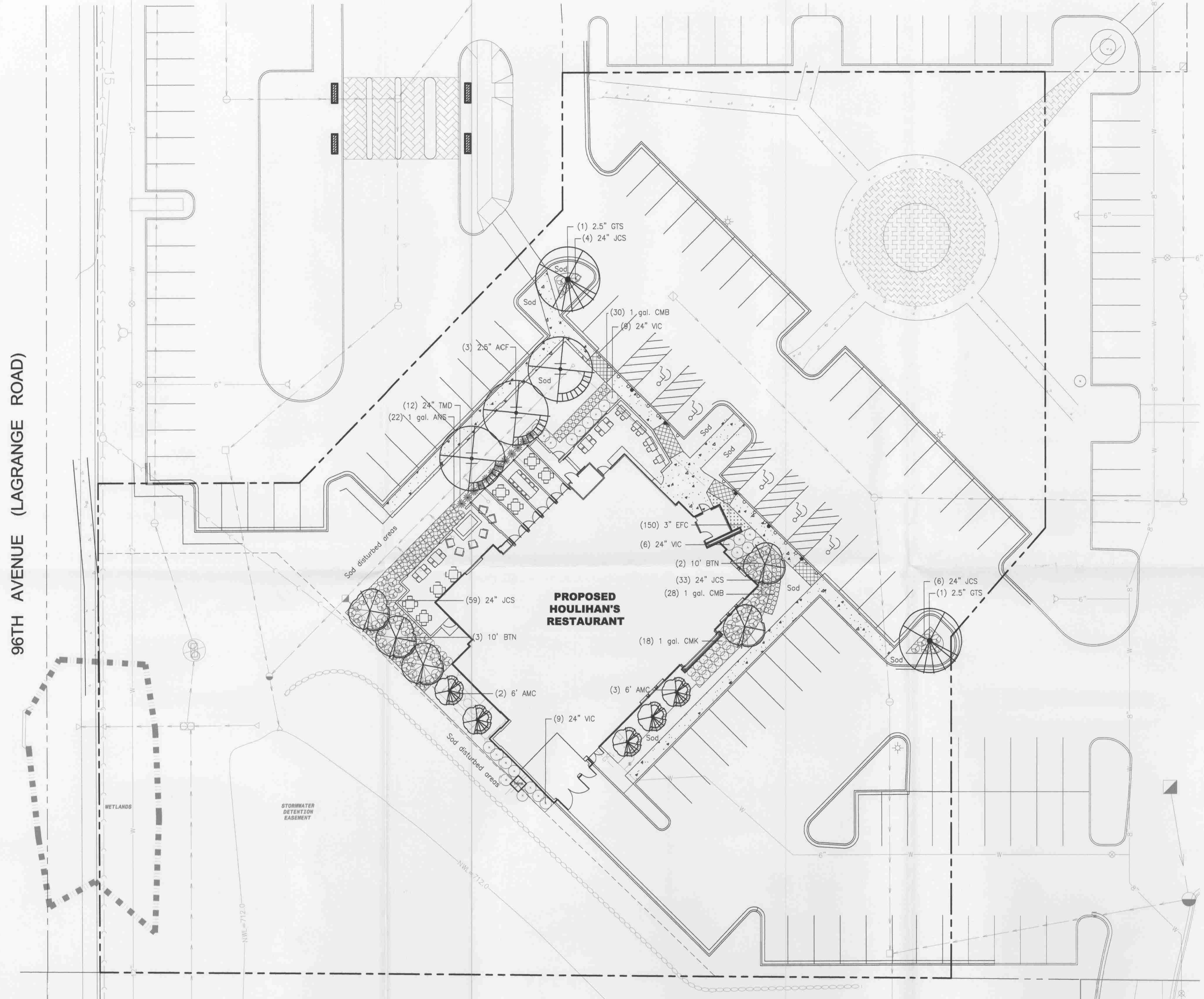
HOULIHAN'S RESTAURANTS INC.



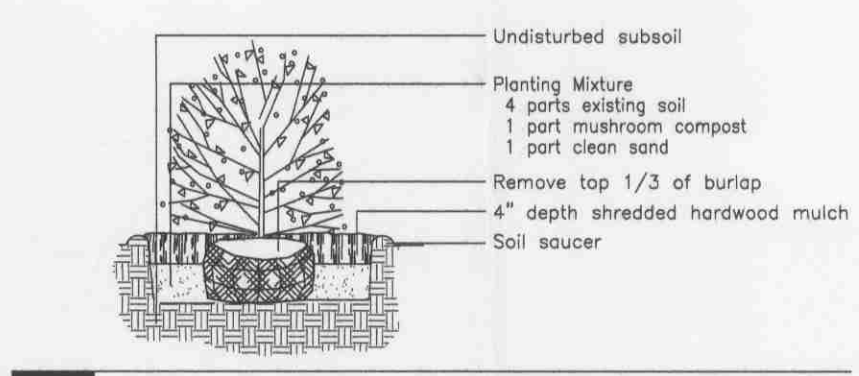
©HOULIHAN'S RESTAURANTS, INC.  
8700 STATE LINE ROAD, SUITE 100  
LEAWOOD, KS 66206 913/901-2500

THESE DRAWINGS ARE PROVIDED FOR PROTOTYPICAL DESIGN CONCEPT ONLY AND ARE NOT SITE SPECIFIC CONSTRUCTION DOCUMENTS. HOULIHAN'S RESTAURANT GROUP AND THEIR AGENTS MAKE NO REPRESENTATION OR WARRANTIES WITH REGARD TO THE COMPLETENESS OF THESE DRAWINGS FOR CONSTRUCTION PURPOSES. THE STRATEGIC PARTNER COVENANTS AND AGREES THAT THE ACCEPTANCE AND USE OF THESE PROTOTYPICAL DESIGN DOCUMENTS IN PRINT FORM OR ELECTRONIC MEDIA, SHALL BE PRESUMED TO BE AN AGREEMENT TO INDEMNIFY AND HOLD HARMLESS BOTH HOULIHAN'S RESTAURANT GROUP AND AGAINST AND FROM ALL CAUSES, DAMAGES, SUITS, PENALTIES, CLAIMS AND DEMANDS, INCLUDING REASONABLE ATTORNEY'S FEES, RESULTING FROM THE USE OF THESE PROTOTYPICAL DESIGN DRAWINGS AND THEIR CONSTRUCTION. IT SHALL BE STRATEGIC PARTNER'S, STRATEGIC PARTNER'S ARCHITECTS AND ENGINEERS OR AGENTS RESPONSIBILITY TO PRODUCE CONSTRUCTION DOCUMENTS COMPLYING WITH ALL APPLICABLE CODES AND ORDINANCES OF THE AUTHORITIES HAVING JURISDICTION OVER THE PROPERTY, INCLUDING BUT NOT LIMITED TO, BUILDING, ZONING, HEALTH AND FIRE CODES. FURTHER, THE STRATEGIC PARTNER SHALL PROVIDE ALL CIVIL ENGINEERING, ENVIRONMENTAL AND SUBSURFACE INVESTIGATIONS FOR THE PROJECT AND OBTAIN ANY ZONING AND DEVELOPER APPROVALS THAT MAY BE REQUIRED. HOULIHAN'S RESTAURANT GROUP AND ITS AGENTS ASSUME NO RESPONSIBILITY FOR CODE COMPLIANCE, DIMENSIONAL ACCURACY OR COMPLETENESS OF THE PROTOTYPICAL DESIGN DOCUMENTS, AS WELL AS ADEQUACY OF M.E.P. SERVICES AND UTILITIES AVAILABLE TO THE PROJECT.

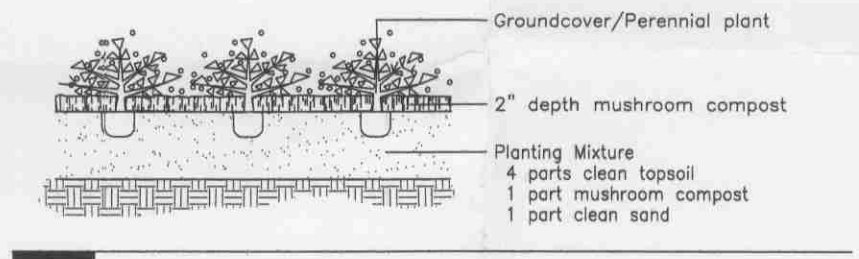
- DRAWING PROGRESS**
- FEASIBILITY
  - CONCEPT
  - CONSTRUCTION DOC. - 50%
  - CONSTRUCTION DOC. - 95%
  - CONSTRUCTION DOC. - FINAL SET



Detail  
Deciduous Tree Planting



Detail  
Shrub Planting



Detail  
Groundcover/Perennial Planting

**Plant List**

KEY	QTY.	SIZE	BOTANICAL NAME	COMMON NAME	REMARKS
ACF	3	2.5"	Acer x freemanii 'Autumn Blaze'	Autumn Blaze Freeman Maple	BB
AMC	5	6"	Amelanchier canadensis	Shadblow Serviceberry	BB, Clump
ANS	22	1 gal.	Andropogon scoparius	Little Bluestem	Container
BTN	5	10"	Betula nigra	River Birch	BB, Clump
CMK	18	1 gal.	Cladonia acutiflora 'Karl Foerster'	Feather Reed Grass	Container
CMB	58	1 gal.	Coreopsis 'Moonbeam'	Moonbeam Coreopsis	Container
EFC	150	3"	Euonymus fortunei var. coloratus	Purpleleaf Wintercreeper	Pot
GTS	2	2.5"	Gleditsia triacanthos var. inermis 'Skyline'	Skyline Thornless Honeylocust	BB
JCS	102	24"	Juniperus chinensis var. sargentii	Sargent Juniper	BB
TMD	12	24"	Toxus x media 'Densiflora'	Dense Yew	BB
VIC	24	24"	Viburnum carlesii	Koreanspice Viburnum	BB

**General Planting Notes**

- Material quality and measurement shall conform to the most recent edition of the American Standard for Nursery Stock, ANSI Z60 by the American Nursery and Landscape Association.
- All shade/overstory trees shall have a 'central leader'.
- The Landscape Architect shall inspect and approve all plant material prior to installation. Any material installed without approval may be rejected.
- The Village may reject any materials that are diseased, deformed, or otherwise not exhibiting superior quality.
- Contractor shall be responsible for providing and installing all materials shown on the plan in accordance with the plan design and materials quantities.
- The Contractor is responsible for protecting underground utilities, sidewalks, and other previously constructed site improvements.
- The Contractor is responsible for protecting all existing vegetation to be preserved.
- Topsoil shall be supplied and installed by the Landscape Contractor to a minimum depth of six inches in lawn areas and twelve inches in planting beds.
- Estimated Time of Planting: Fall 2007.
- The Owner agrees to comply with Plant Maintenance Standards.

BOARD APPROVED  
CASE NO. 2007-0709.0  
DATE 11-5-07  
W/CONDITIONS \_\_\_\_\_  
W/O CONDITIONS \_\_\_\_\_

**LANDSCAPE PLAN**

SCALE: 1" = 20'



DATE  
10.24.07  
DRAWING TITLE  
**LANDSCAPE PLAN**  
SHEET

**L1.0**

DAVID R. McCALLUM ASSOCIATES, INC.  
Landscape Architects  
507 North Douglas Avenue  
Libertyville, Illinois 60088

SEAL

96TH AVENUE (LAGRANGE ROAD)

**HOULIHAN'S**  
16153 LaGRANGE ROAD  
ORLAND PARK, ILLINOIS