
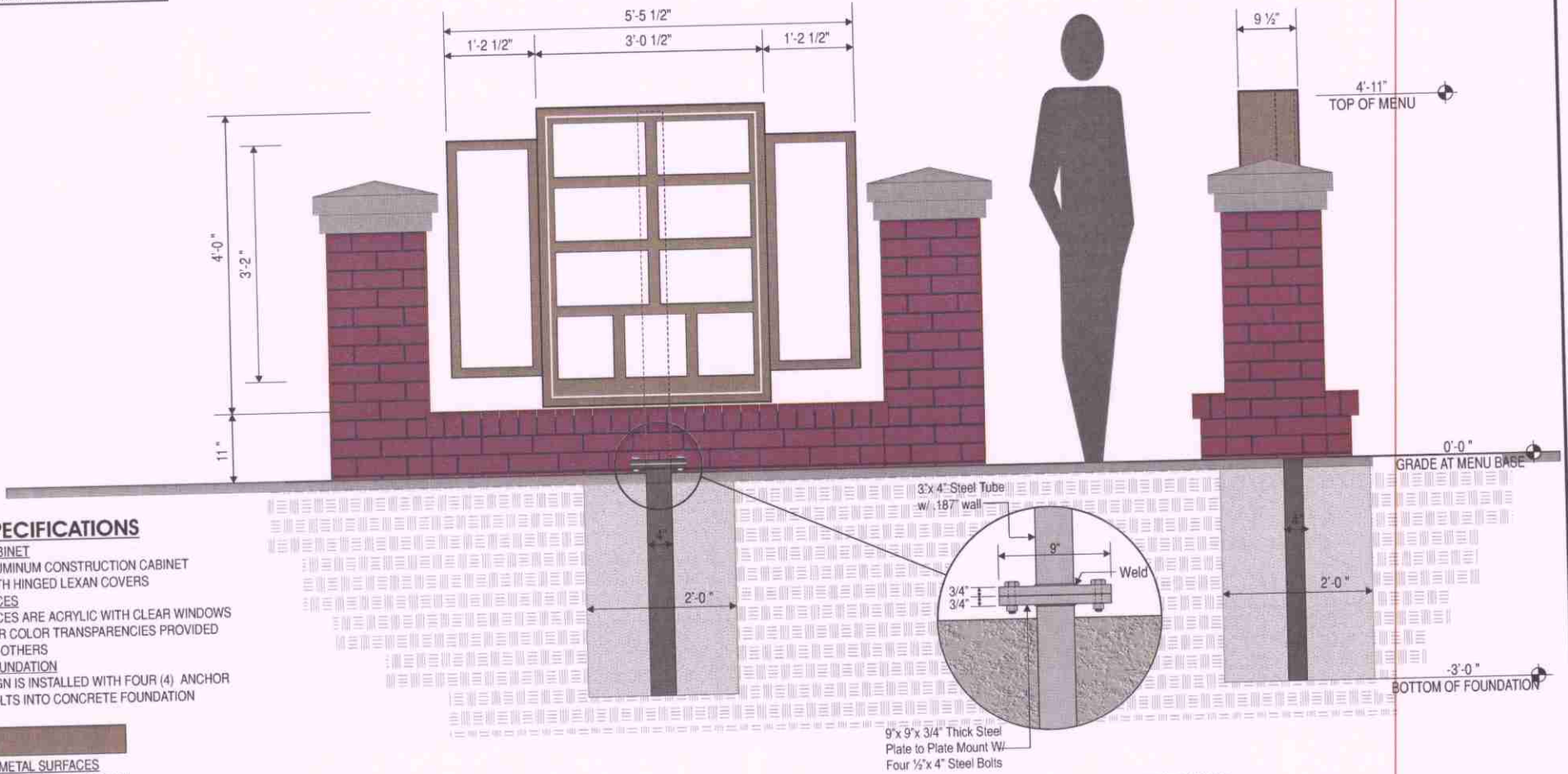




This Product is Listed by
UNDERWRITERS LABORATORIES, INC. 
 and Bears the Mark:



SPECIFICATIONS

CABINET
 ALUMINUM CONSTRUCTION CABINET
 WITH HINGED LEXAN COVERS
FACES
 FACES ARE ACRYLIC WITH CLEAR WINDOWS
 FOR COLOR TRANSPARENCIES PROVIDED
 BY OTHERS
FOUNDATION
 SIGN IS INSTALLED WITH FOUR (4) ANCHOR
 BOLTS INTO CONCRETE FOUNDATION


METAL SURFACES
 PAC CLAD #SIERRA TAN


BRICK
 CUNNINGHAM RED VELOUR BRICK

ELEVATION

SCALE - 3/4" = 1'- 0"

END VIEW

SCALE - 3/4" = 1'- 0"



5198 North Lake Drive
 Lake City, GA 30260
 404-361-3800 fax 404-361-7038
 website - www.claytonsigns.com

SIGN TYPE
9B

INTERNALLY-ILLUMINATED DRIVE-THRU MENU
 DRAWING FILE - CTA - ORLAND PARK, IL SIGNAGE.CDR

ALL ELECTRICAL
 SIGNS ARE
120 VOLTS
 UNLESS
 OTHERWISE INDICATED

DRAWN BY BEN HOLLIDAY
 ACCOUNT REP. BEN HOLLIDAY
 DRAWING DATE APRIL 23, 2009
 REVISION DATE AUGUST 5, 2009

STORE NUMBER
2638

STORE ADDRESS
 CHICK-FIL-A - ORLAND PARK FSU
 15605 LAGRANGE ROAD
 ORLAND PARK, IL 60462

THIS DRAWING IS AN ORIGINAL UNPUBLISHED DESIGN CREATED BY CLAYTON SIGNS, INC. IT IS NOT TO BE REPRODUCED, CHANGED, OR DISTRIBUTED TO ANYONE OUTSIDE OF YOUR COMPANY IN WHOLE OR IN PART WITHOUT WRITTEN PERMISSION FROM THE OWNER OF CLAYTON SIGNS, INC. ANY SUCH ACTIONS MAY BE SUBJECT TO LEGAL ACTION IN A COURT OF LAW.
 © 2009 ALL RIGHTS RESERVED

LOCATION
I