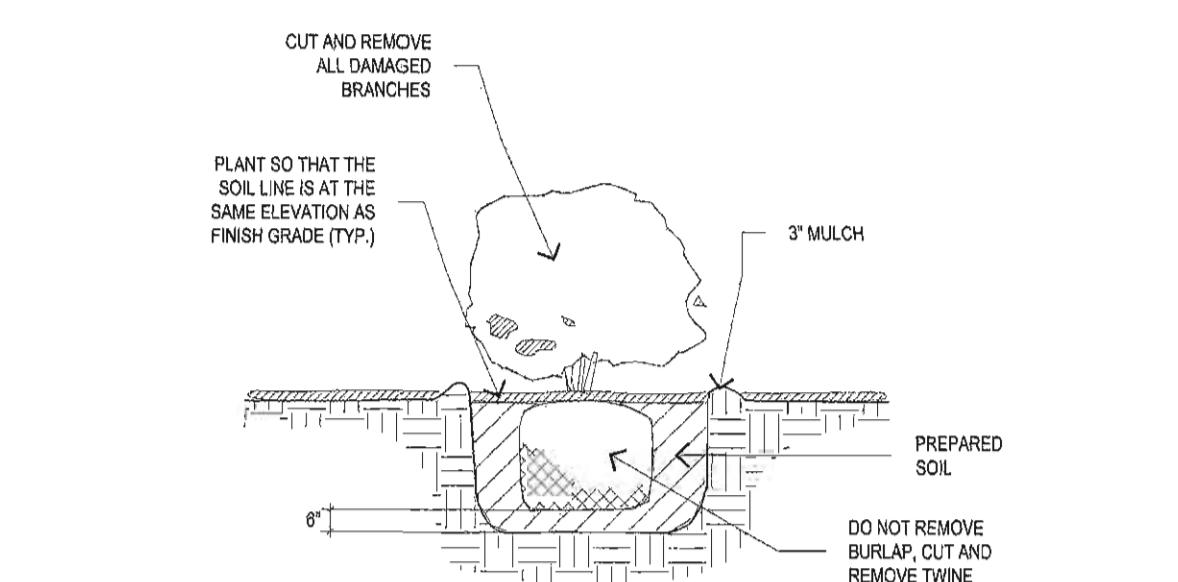
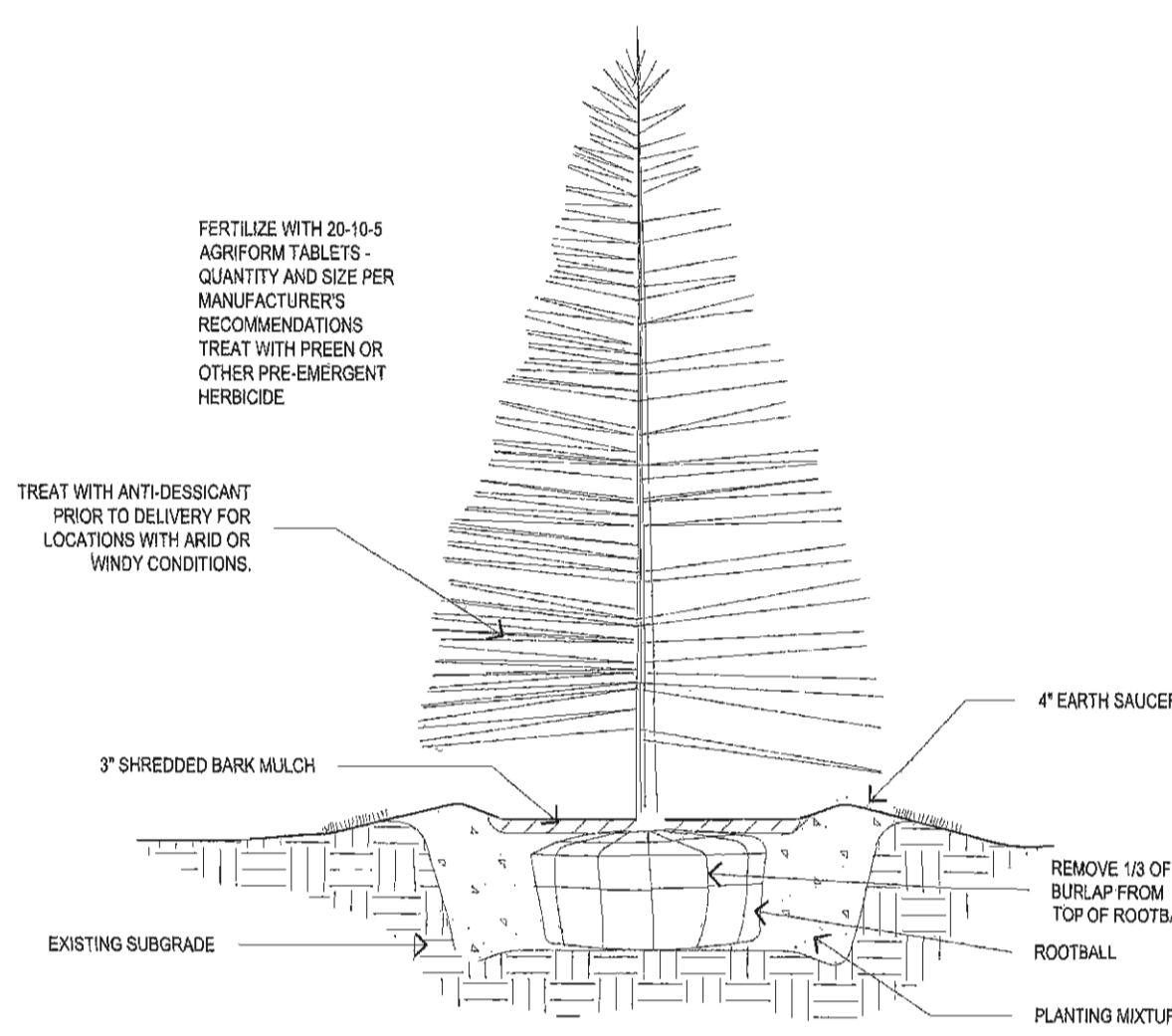


8 Tree Planting Detail NOT TO SCALE



9 Shrub Planting Detail NOT TO SCALE



10 Evergreen Tree Detail NOT TO SCALE

GENERAL NOTES:

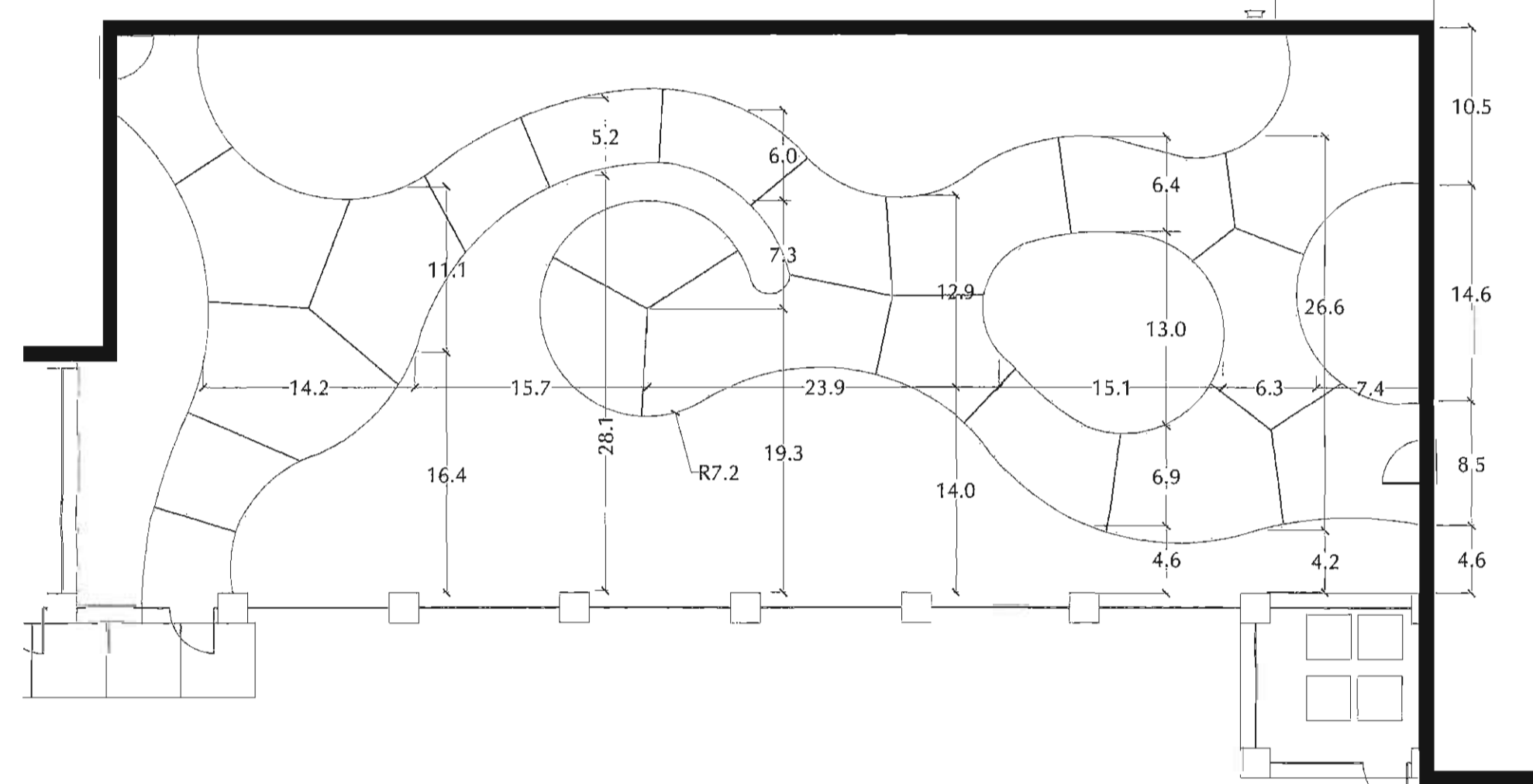
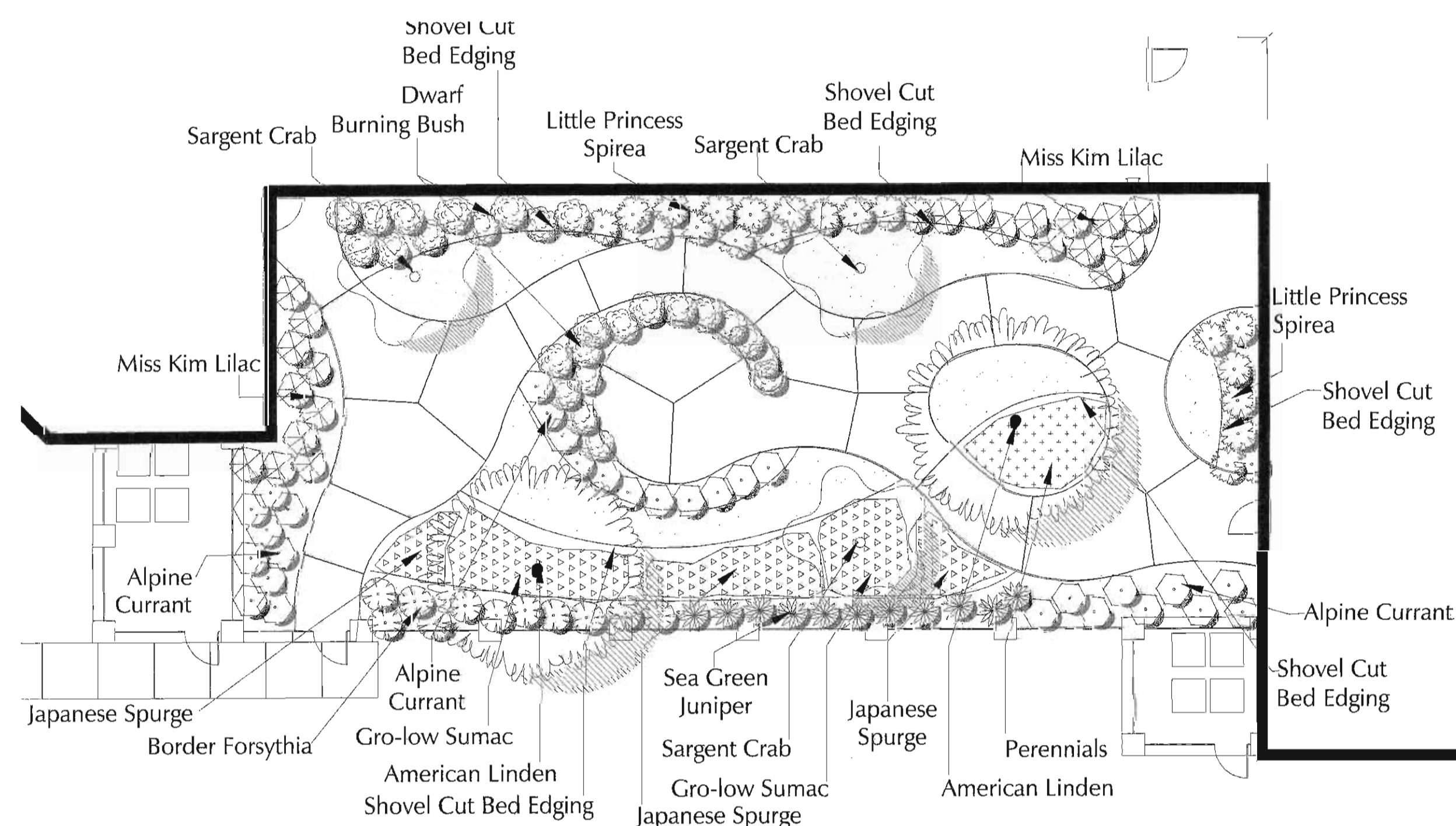
- PRIOR TO COMMENCEMENT OF ANY CONSTRUCTION ACTIVITIES, CONTRACTOR SHALL NOTIFY J.U.L.E. (800) 892-0123 TO DETERMINE THE LOCATION OF ANY UNDERGROUND UTILITIES, WHICH MAY AFFECT PROPOSED SITE WORK. CONTRACTOR SHALL NOTIFY THE LANDSCAPE ARCHITECT IMMEDIATELY OF ANY DISCREPANCIES, OBSTACLES AND/OR PROBLEMS.
- VERIFICATION OF DIMENSIONS AND GRADES, BOTH EXISTING AND PROPOSED, SHALL BE THE CONTRACTOR'S RESPONSIBILITY PRIOR TO COMMENCEMENT OF WORK. THE CONTRACTOR SHALL NOTIFY THE LANDSCAPE ARCHITECT OF ANY DISCREPANCIES.
- ALL SURFACE DRAINAGE SHALL BE DIRECTED AWAY FROM STRUCTURES. SURFACE DRAINAGE SHALL BE DIRECTED TO EXISTING CATCH BASINS DESIGNATED FOR THE COLLECTION OF SURFACE RUN-OFF.
- PLANT MATERIAL SIZES SHOWN ON PLANT SCHEDULE ARE MINIMUM ACCEPTABLE SIZES. ALL PLANT MATERIAL SHALL BE OF SPECIMEN QUALITY. NO "PARK GRADE" MATERIAL WILL BE ACCEPTED.
- ALL PLANT MATERIAL SHALL BE OBTAINED FROM AN APPROVED NORTHERN ILLINOIS NURSERY WITH HEAVY CLAY SOILS.
- ALL PLANT MATERIAL SHALL CONFORM TO AMERICAN STANDARD FOR NURSERY STOCK AS SPONSORED BY THE AMERICAN ASSOCIATION OF NURSERYMEN AND APPROVED BY THE AMERICAN NATIONAL STANDARDS INSTITUTE, INC. (ANSI).
- IF SPECIFIED SPECIES AND/OR QUALITY OF PLANTS ARE NOT AVAILABLE AT THE TIME OF ORDERING, THE LANDSCAPE ARCHITECT, AT HIS/HER DISCRETION, MAY SUBSTITUTE SIMILAR PLANTS WITH THE SAME WHOLESALE VALUE.
- ALL PLANTS TO BE BALLED IN BURLAP AS SPECIFIED IN PLANT SCHEDULE. ALL PLASTIC ROOT WRAPPING MATERIAL AND METAL WIRE BASKETS SHALL BE REMOVED.
- SOIL TO BE USED FOR THE PLANTING MEDIUM FOR THE PROJECT SHALL BE FERTILE, WELL-DRAINED, OF UNIFORM QUALITY, FREE OF STONES OVER 1" IN DIAMETER, STICKS, OILS, CHEMICALS, PLASTER, CONCRETE AND OTHER DELETERIOUS MATERIAL.
- ALL LANDSCAPE MATERIALS SHALL BE INSTALLED IN ACCORDANCE WITH ALL APPLICABLE CODES AND ORDINANCES.
- ALL LANDSCAPE MATERIALS SHALL BE INSTALLED IN CONFORMANCE WITH THE ACCEPTED INDUSTRY'S STANDARD "BEST PRACTICE" TECHNIQUES AS IDENTIFIED BY THE ILLINOIS LANDSCAPE CONTRACTORS ASSOCIATION (ILCA).
- THE OWNER AND/OR LANDSCAPE ARCHITECT RESERVES THE RIGHT TO REJECT ANY PLANT MATERIAL IN POOR CONDITION/ FORM OR NOT INSTALLED ACCORDING TO "BEST PRACTICE" TECHNIQUES.
- THE LANDSCAPE CONTRACTOR SHALL PREPARE PLANTING BEDS BY ADDING SOIL AMENDMENTS TO TOPSOIL MIX IN THE FOLLOWING QUANTITIES: TOPSOIL MIX FOR TREES & SHRUBS SHALL BE THREE (3) PARTS TOPSOIL, ONE (1) PART PEAT, AND ONE (1) PART SAND.
- ALL TREE & SHRUB PLANTINGS TO RECEIVE 3" OF SHREDDED HARDWOOD MULCH.
- CONTRACTOR SHALL WATER PLANTS IMMEDIATELY AFTER PLANTING. FLOOD PLANTS TWICE DURING FIRST TWENTY-FOUR HOURS AFTER PLANTING.
- ALL ROAD AND WALK SURFACES SHALL BE KEPT CLEAR OF MUD AND DEBRIS AT ALL TIMES.
- CONTRACTOR SHALL REPAIR IN KIND ANY AREAS DAMAGED AS A RESULT OF LANDSCAPE OPERATIONS.
- GUARANTEE SPECIFICATIONS ARE AS FOLLOWS: THE CONTRACTOR SHALL PROVIDE THE OWNER WITH A BONDED WRITTEN ONE-YEAR WARRANTY AGREEMENT BEGINNING ON THE FIRST DAY OF THE OWNER'S POSSESSION. THIS AGREEMENT SHALL PROVIDE FOR THE REPLACEMENT OF DEAD OR DYING PLANT MATERIAL. THE CONTRACTOR SHALL PROVIDE THE OWNER WITH A TYPEWRITTEN LIST OF SPECIFIC MAINTENANCE INSTRUCTIONS FOR EACH TYPE OF PLANT INSTALLED WITH THE WRITTEN AGREEMENT AND BOND.
- MULCH - BUILDING FOUNDATION USE MUSHROOM COMPOST, SCREENED AND MIXED WITH HARDWOOD FINES TO USE AS A SOIL AMENDMENT. COMPOSTED TWICE TO LOWER PH, LEACH OUT SALTS, AND STABILIZE THE PRODUCT. EXCELLENT CONSISTENCY. 40 CU. YD. MINIMUM.

1 COURTYARD A LANDSCAPE PLAN

1"=10'-0"

3 COURTYARD A HARDSCAPE PLAN

1"=10'-0"

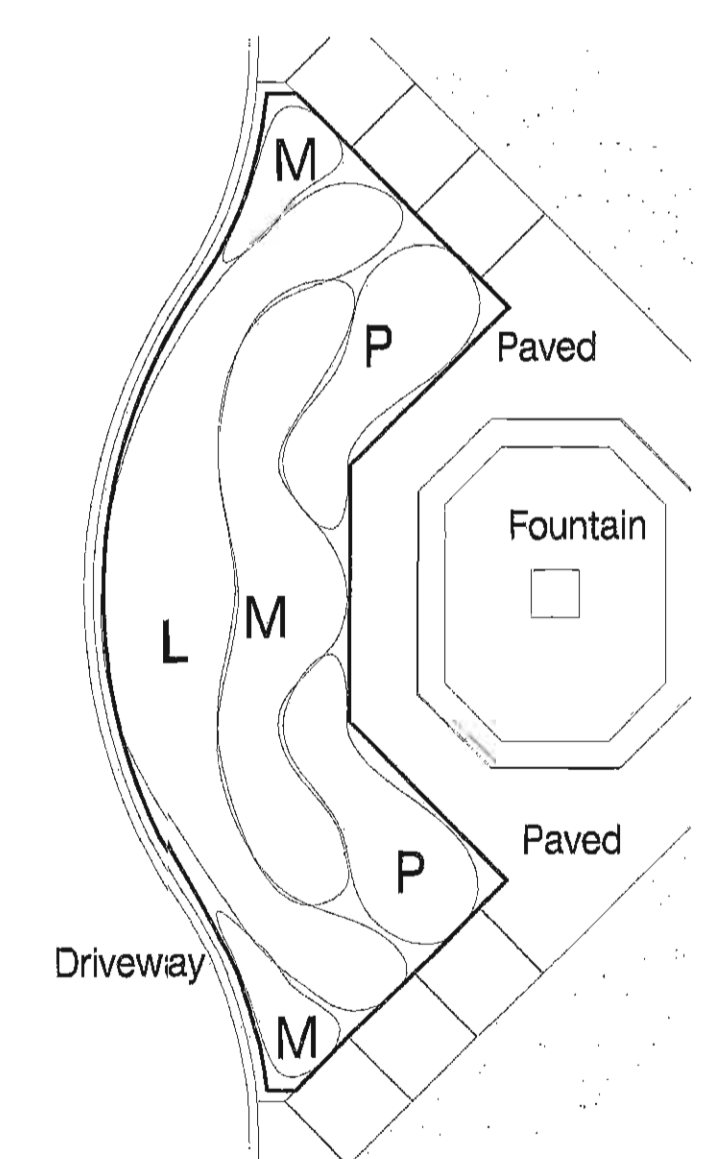
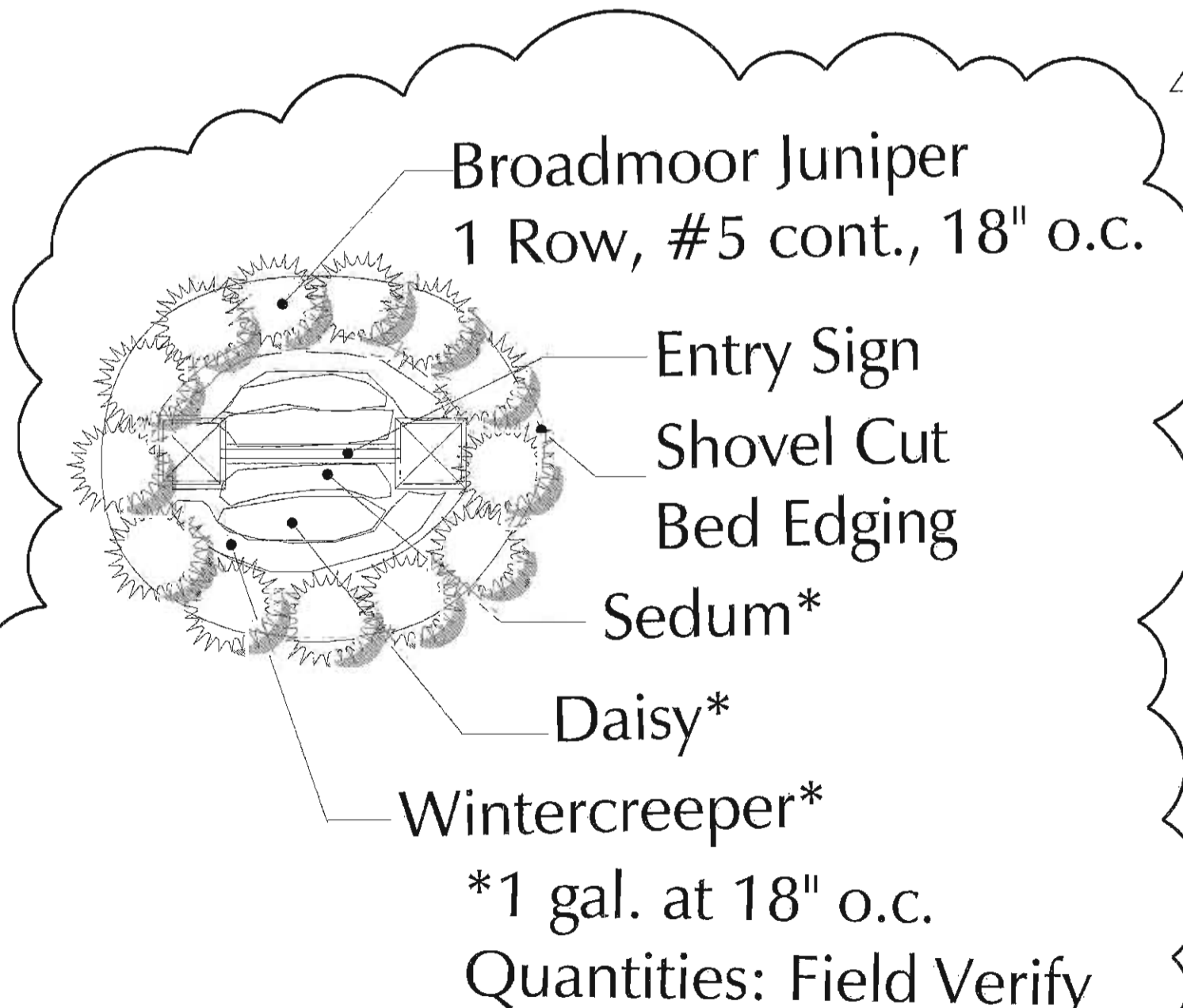
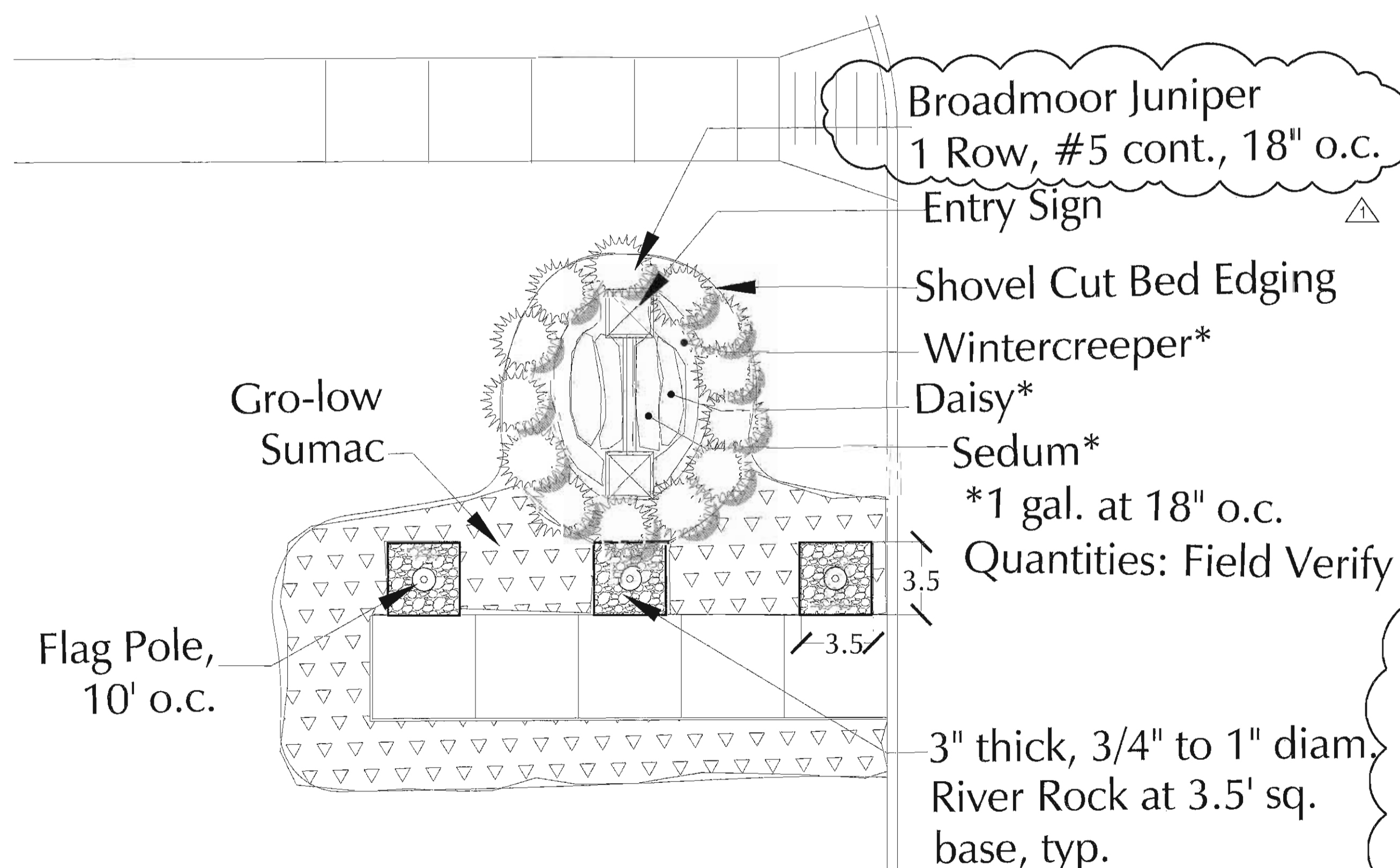


2 COURTYARD B LANDSCAPE PLAN

1"=10'-0"

4 COURTYARD B HARDSCAPE PLAN

1"=10'-0"



	Spring	Summer	Fall	Winter
Low (l)	Snowdrops Windflowers Grape Hyacinths	Impatiens Periwinkle	Viola and Pansy Lobelia Pantolas	Cut Evergreen Boughs and Red Twig Stems
Medium (m)	Kaufmaniana Jonquils Alliums	Begonia Hardy Cladious Torenia	Petunia Larkspur	Cut Evergreen Boughs and Red Twig Stems
Perennial (P)	Black-eyed Susan Orange Conflower			Cut Evergreen Boughs and Red Twig Stems

5 ENTRY SIGN PLANTING

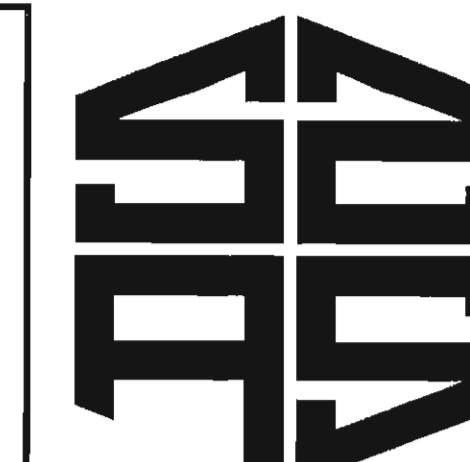
1"=5'-0"

6 SIGN PLANTING

1"=5'-0"

7 FLOWERBED

NTS



SAS ARCHITECTS & PLANNERS

630 DUNDEE ROAD  
NORTHBROOK, ILLINOIS 60062  
847-564-8333 • FAX 214-239-9899



The LaSalle Group, Inc.

545 E. John Carpenter Freeway, Suite 945  
Lubbock, Texas 79602  
214-239-8400 • FAX 214-239-9401

AUTUMN LEAVES ASSISTED LIVING ILLINOIS ORLAND PARK LANDSCAPE DETAIL PLAN

NO.	DESCRIPTION	DATE
ADDENDUM#1		06/23/08
CONSTRUCTION		07/21/08

REVISIONS  
SIGNATURE



DRAWN BY YH APPROVED BY NRP  
JOB NO. 06073 DATE 03-17-2008  
SHEET NO.

L-1.2