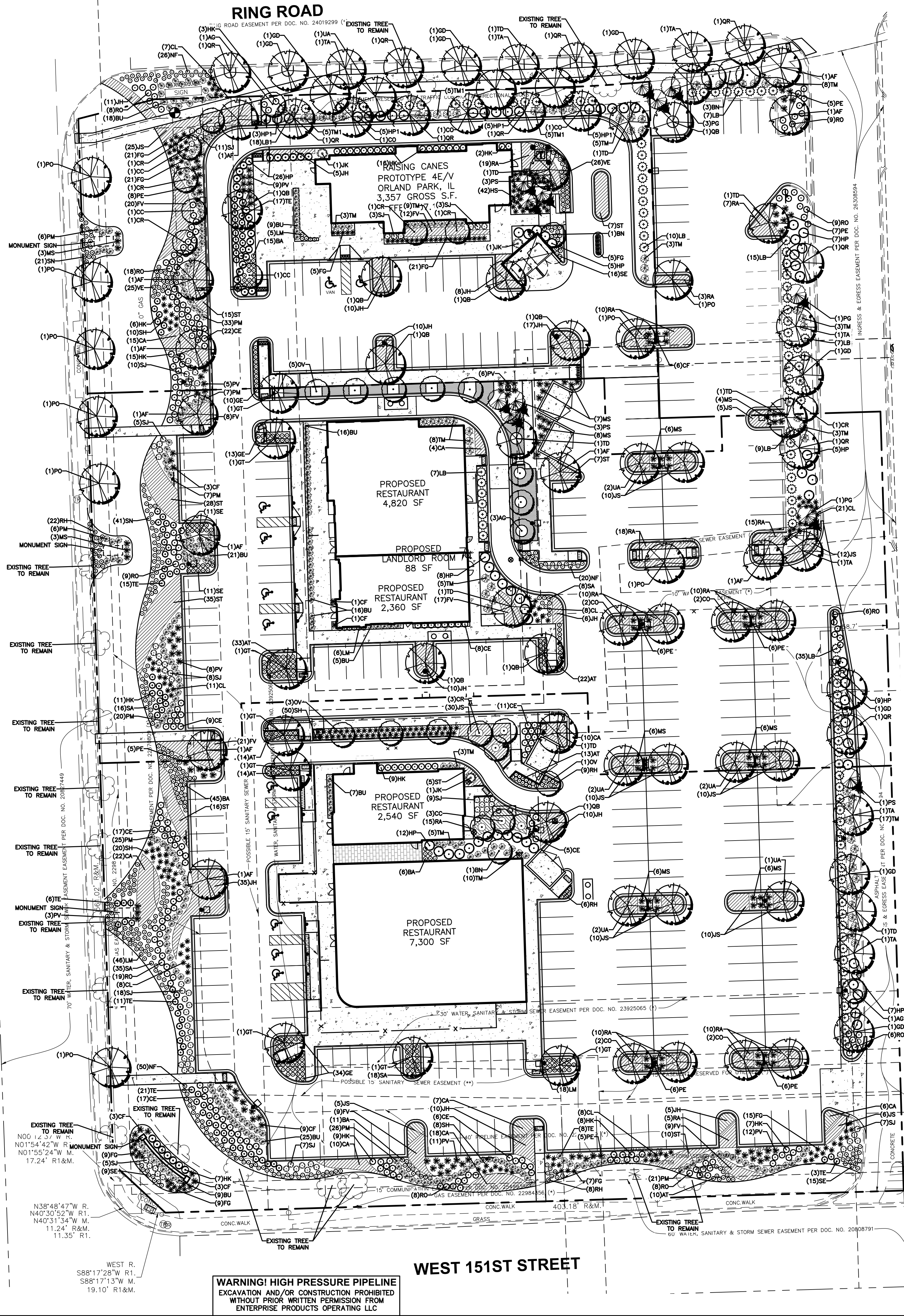


**SOUTH LAGRANGE ROAD (U.S. ROUTE 45)**



**WARNING! HIGH PRESSURE PIPELINE**  
 EXCAVATION AND/OR CONSTRUCTION PROHIBITED  
 WITHOUT PRIOR WRITTEN PERMISSION FROM  
 ENTERPRISE PRODUCTS OPERATING LLC

**LANDSCAPE CODE SUMMARY**

	LENGTH/AREA	PLANT MATERIAL REQUIRED	PLANT MATERIAL PROVIDED
<b>LANDSCAPE PARKWAYS (6-305.D.2)</b>			
S. LAGRANGE ROAD	562 LF	14.05 Trees	8 Existing Trees to Remain and 6 Shade Trees
W. 151st STREET	372 LF	9.3 Trees	7 Existing Trees to Remain
RING ROAD	379 LF	9.5 Trees	10 Shade Trees
<b>LANDSCAPE CORRIDORS (6-305.D.3)</b>			
S. LAGRANGE ROAD	562 LF	5.6 Shade Trees and 5.6 Ornamental or Evergreen Trees	Easements prevent tree planting
W. 151st STREET	372 LF	3.7 Shade Trees and 3.7 Ornamental or Evergreen Trees	Easements prevent tree planting
RING ROAD	379 LF	3.7 Shade Trees and 3.7 Ornamental or Evergreen Trees	3 Existing Trees to Remain 1 Shade Tree 3 Ornamental Trees 1 Evergreen Tree
<b>LANDSCAPE BUFFERYARDS (6-305.D.4)</b>			
WEST	562 LF	16.8 Shade Trees, 5.6 Ornamental or Evergreen Trees, 89.9 Shrubs	Easements prevent tree planting, 571 Small Shrubs, 118 Ornamental Grasses, and 204 Perennials
SOUTH	372 LF	11.1 Shade Trees, 3.7 Ornamental or Evergreen Trees, 59.5 Shrubs	Easements prevent tree planting, 269 Small Shrubs, 57 Ornamental Grasses, and 75 Perennials
EAST	446 LF	13.4 Shade Trees, 4.5 Ornamental or Evergreen Trees, 71.4 Shrubs	1 Existing Tree to Remain, 12 Shade Trees, 2 Ornamental Tree, 57 Ornamental Grasses, 56 Large Shrubs, 12 Small Shrubs, and 21 Ornamental Grasses
NORTH	379 LF	11.3 Shade Trees, 3.7 Ornamental or Evergreen Trees, 60.6 Shrubs	11 Shade Trees, 2 Evergreen Trees, 2 Ornamental Trees, 48 Small Shrubs, 40 Large Shrubs, 7 Ornamental Grasses, and 26 Perennials
<b>FOUNDATION LANDSCAPE (6-305.D.5.a)</b>			
RAISING CANES - LOT 1	305.5 LF	3.1 Ornamental Trees & 48.9 Shrubs	3 Ornamental Trees, 5 Large Shrubs, 104 Small Shrubs, 77 Ornamental Grasses, and 82 Perennials
PROPOSED RESTAURANT (4,820 SF) - LOT 2	216 LF	2.2 Ornamental Trees & 34.6 Shrubs	3 Ornamental Trees (east of drive-thru lane), 15 Large Shrubs, 25 Small Shrubs, and 20 Ornamental Grasses (adjacent to transformer & dumpsters)
PROPOSED RESTAURANT (2,360 SF) - LOT 2	152 LF	1.5 Ornamental Trees & 24.3 Shrubs	2 Ornamental Tree (between Lot 1 & Lot 2), 8 Large Shrubs, 44 Small Shrubs, 10 Ornamental Grasses, and 18 Perennials
PROPOSED RESTAURANT (2,540 SF) - LOT 3	146 LF	1.5 Ornamental Trees & 23.4 Shrubs	2 Ornamental Trees, 3 Large Shrubs, 30 Small Shrubs, and 50 Ornamental Grasses
PROPOSED RESTAURANT (7,300 SF) - LOT 3	284 LF	2.8 Ornamental Trees & 45.4 Shrubs	3 Ornamental Trees, 25 Large Shrubs, and 34 Small Shrubs
<b>INTERIOR LOT LANDSCAPE (6-305.D.5.b)</b>			
ENTIRE SITE	217,574 SF	21.75 Trees	15 Shade Trees and 7 Ornamental Trees
<b>PARKING LOT PERIMETER SCREENING (6-305.D.6.a.1)</b>			
WEST	332 LF	332 lf of 3' shrubs	Easement prevents plantings over 18 inches
SOUTH	290 LF	290 lf of 3' shrubs	Easement prevents plantings over 18 inches
EAST	381 LF	381 lf of 3' shrubs	59 Large Shrubs
NORTH	47 LF	47 lf of 3' shrubs	7 Large Shrubs
<b>PARKING LOT ISLAND LANDSCAPING (6-305.D.6.a.2)</b>			
ENTIRE SITE	322 SPACES	32.2 Trees & Groundcover	32 Shade Trees, 280 Small Shrubs, 71 Ornamental Grasses, and 223 Perennials
<b>SIGNAGE LANDSCAPING (6-305.D.7.a)</b>			
ENTIRE SITE	5 SIGNS	5' Landscape Bed around Sign	65 Small Shrubs, 40 Ornamental Grasses, and 124 Perennials

**LANDSCAPE NOTES**

- LOCATING AND PROTECTING ALL UNDERGROUND UTILITIES, PRIOR TO DIGGING, IS RESPONSIBILITY OF THE LANDSCAPE CONTRACTOR.
- PRIOR TO INSTALLATION, THE LANDSCAPE CONTRACTOR SHALL INSPECT THE SUB GRADE, GENERAL SITE CONDITIONS, VERIFY ELEVATIONS, UTILITY LOCATIONS, IRRIGATION, APPROVE TOPSOIL PROVIDED BY GENERAL CONTRACTOR AND OBSERVE THE SITE CONDITIONS UNDER WHICH THE WORK IS TO BE DONE. NOTIFY GENERAL CONTRACTOR OF ANY UNSATISFACTORY CONDITIONS. WORK SHALL NOT PROCEED UNTIL SUCH CONDITIONS HAVE BEEN CORRECTED AND ARE ACCEPTABLE TO THE LANDSCAPE CONTRACTOR AND/OR CONSTRUCTION MANAGER.
- GENERAL AND LANDSCAPE CONTRACTOR ARE RESPONSIBLE FOR PROTECTING EXISTING TREES FROM DAMAGE DURING CONSTRUCTION. GENERAL CONTRACTOR TO INSTALL TREE PROTECTION FENCING PRIOR TO ANY SITE WORK.
- ALL SHRUB AND GROUND COVER BEDS TO BE MULCHED WITH A MINIMUM OF 3 INCHES OF CLEAN SHREDDED HARDWOOD MULCH.
- PLANTING HOLES TO BE DUG A MINIMUM OF TWICE THE WIDTH OF THE ROOT BALL OF BOTH SHRUB AND TREE. AMEND BACKFILL WITH TOPSOIL MIX. TOPSOIL MIX TO BE 4 PARTS SCREENED TOPSOIL AND 1 PART ORGANIC MATERIAL (i.e. NATURE'S HELPER OR PRO MIX).
- EXISTING GRASS IN PROPOSED PLANTING AREAS TO BE REMOVED AND AREA TO BE HAND RAKED TO REMOVE ALL ROCKS AND DEBRIS LARGER THAN 1 INCH IN DIAMETER PRIOR TO PLANTING SHRUBS.
- SOIL TO BE TESTED TO DETERMINE FERTILIZER AND LIME REQUIREMENTS. LIME AND FERTILIZER TO BE DISTRIBUTED PRIOR TO LAYING SOD. ALL DISTURBED AREAS (INCLUDING RIGHT-OF-WAYS) NOT RECEIVING PLANTINGS TO RECEIVE 4 INCHES OF TOPSOIL AND SODDED.
- SOD TO BE DELIVERED FRESH (CUT LESS THAN 24 HOURS PRIOR TO ARRIVING ON SITE), LAID IMMEDIATELY, ROLLED AND WATERED THOROUGHLY WITHIN ONE HOUR OF INSTALLATION.
- ALL CHANGES TO DESIGN AND/OR PLANT SUBSTITUTIONS TO BE AUTHORIZED BY LANDSCAPE ARCHITECT.
- ALL PARKING ISLANDS TO BE BERMED UP 6"-10" WITH CLEAN FRIABLE TOPSOIL PRIOR TO PLANTING.
- ALL LANDSCAPING SHALL BE INSTALLED IN CONFORMANCE WITH ANSI Z60.1 THE AMERICAN STANDARD FOR NURSERY STOCK, AND THE ACCEPTED STANDARDS OF AMERICANHORT.
- THE LANDSCAPE CONTRACTOR SHALL GUARANTEE ALL PLANTS INSTALLED FOR ONE FULL YEAR FROM DATE OF ACCEPTANCE BY THE OWNER. ALL PLANTS SHALL BE ALIVE AND AT A VIGOROUS RATE OF GROWTH AT THE END OF THE GUARANTEE PERIOD. THE LANDSCAPE CONTRACTOR SHALL NOT BE RESPONSIBLE FOR ACTS OF GOD OR VANDALISM.
- ANY PLANT THAT IS DETERMINED DEAD, IN AN UNHEALTHY OR UNSIGHTLY CONDITION, LOST ITS SHAPE DUE TO DEAD BRANCHES OR OTHER SYMPTOMS OF POOR, NON-VIGOROUS GROWTH SHALL BE REPLACED BY THE LANDSCAPE CONTRACTOR WITH THE COST OF THE REPLACEMENT INCLUDED IN THE BID OR PROPOSAL PRICE.
- WATER THOROUGHLY TWICE IN THE FIRST 24 HOURS AND APPLY MULCH IMMEDIATELY.
- LANDSCAPE REQUIREMENTS NOT MET BY PARTICULAR CODE REQUIREMENT ARE PROVIDED ELSEWHERE ON SITE.
- PROPERTY OWNER RESPONSIBLE FOR MAINTAINING AND PRUNING TREES TO AVOID CONFLICT WITH POLE MOUNTED LIGHTING.
- PLANT MATERIAL ON THE NORTH SIDE OF DRIVE-THROUGH AISLE ON LOT 1 TO BE INSTALLED AND MAINTAINED AT A HEIGHT OF 36 INCHES.



PROJECT NO.	DATE	REVISION
079572	09/11/20	FOR PUD REVIEW
10/02/19	09/01/20	REVISED PER VILLAGE COMMENTS
JM	08/13/20	REVISED PER VILLAGE COMMENTS
JM	06/26/20	REVISED PER VILLAGE COMMENTS
JG	05/19/20	REVISED PER VILLAGE COMMENTS
JG	05/08/20	REVISED PER MWRD COMMENTS

1815 South Meyers Road  
 Suite 950  
 Oakbrook Terrace, IL 60181  
**WOOLPERT**  
 ARCHITECTURAL ENGINEERING & LANDSCAPE ARCHITECTURE  
 630.424.9080  
 FAX: 630.495.3731

**SITE IMPROVEMENT PLANS**  
**LAGRANGE SQUARE**  
 45 ORLAND SQUARE DRIVE  
 ORLAND PARK, COOK COUNTY, IL 60462  
**LANDSCAPE PLAN**

SHEET NO. **C500**

**BENCHMARK (⊙):**

THE BASIS OF ELEVATIONS HEREON IS NAVD 88 PER OBSERVATIONS OF SELECTED STATIONS IN THE NATIONAL GEODETIC SURVEY CONTINUOUSLY OPERATING REFERENCE STATION (NGS CORNS) NETWORK. IRON PIPE IN CONCRETE FOUND - SEE DRAWING FOR LOCATION.

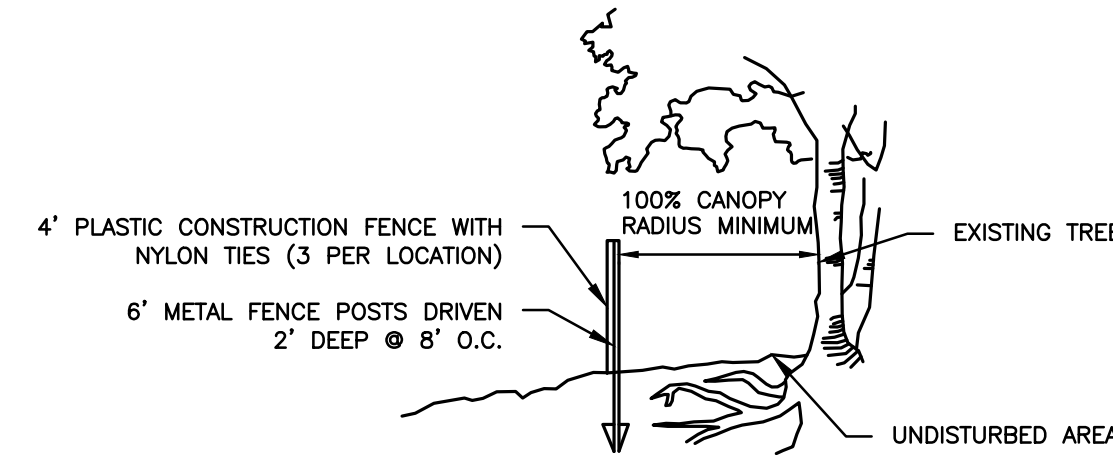
ELEVATION = 706.60'

THE EXISTING CONDITIONS SHOWN ARE BASED UPON A SURVEY PREPARED BY WOOLPERT AND DATED 05/31/19.





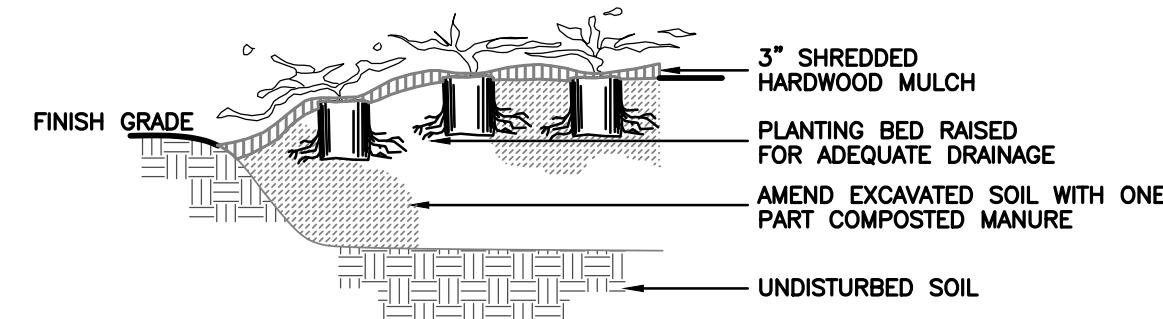
Layout Tab Name: C501 LANDSCAPE DETAILS, Images: north.jpg, grzywa seal.jpg, Xrefs: 079572 - P.dwg, 079572 - X.dwg, 079572-TBLK.dwg, 079572-photometrics.dwg, 079572 - X-DIGI.dwg  
 Last Saved By: cooke, 9/11/2020 3:26:10 PM  
 G:\DE\clients\Key Development\079572 - Orland Park, IL\4.0 Disciplines\Civil\Cadd\Alternate CD\079572 - C500-LAN.dwg Plotted By: Cooke, Jake Plotted: September 11, 2020, 3:35:09 PM



FENCE MUST BE MAINTAINED THROUGHOUT CONSTRUCTION PERIOD AND REMOVED WHEN CONSTRUCTION HAS BEEN COMPLETED. FINAL PLACEMENT OF FENCE MUST BE APPROVED BY THE OWNER'S REPRESENTATIVE.

### TREE PRESERVATION FENCING

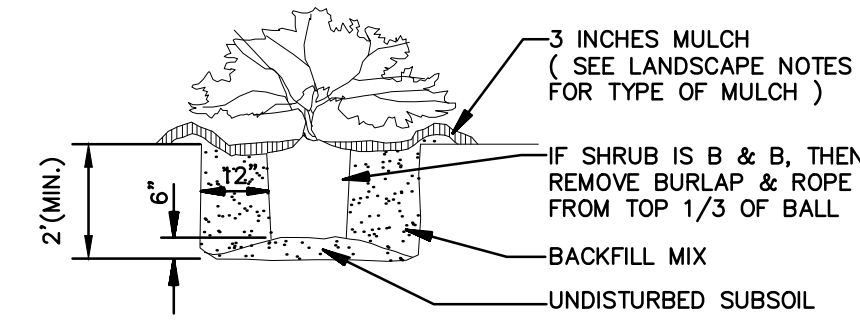
N.T.S.



- NOTE:
1. SIZE OF PIT VARIES WITH SIZE OF ROOT BALL.
  2. TOP OF BALL TO BE 1"-2" ABOVE FINISH GRADE.
  3. SPREAD FERTILIZER EVENLY IN SAUCER.
  4. RETAIN ALL LEADERS.

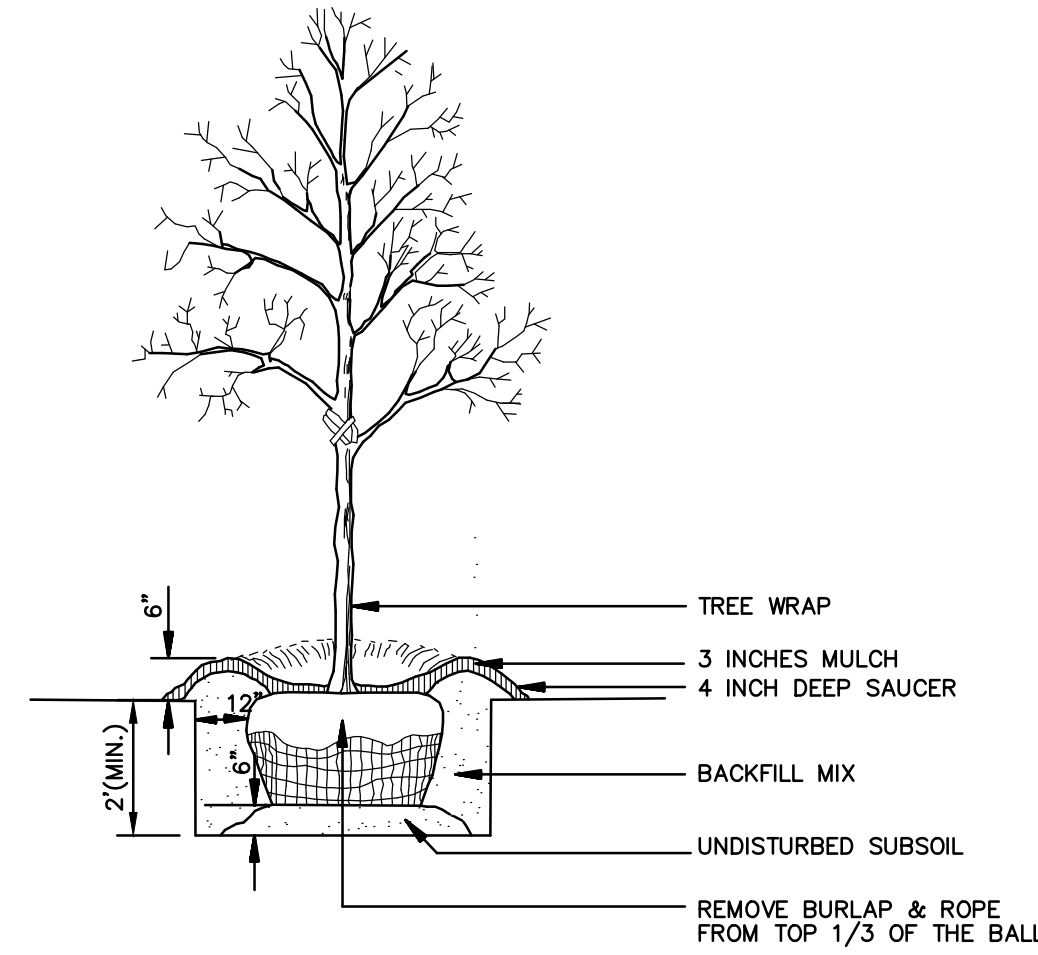
### PERENNIAL & GROUNDCOVER PLANTING

N.T.S.



### SHRUB PLANTING

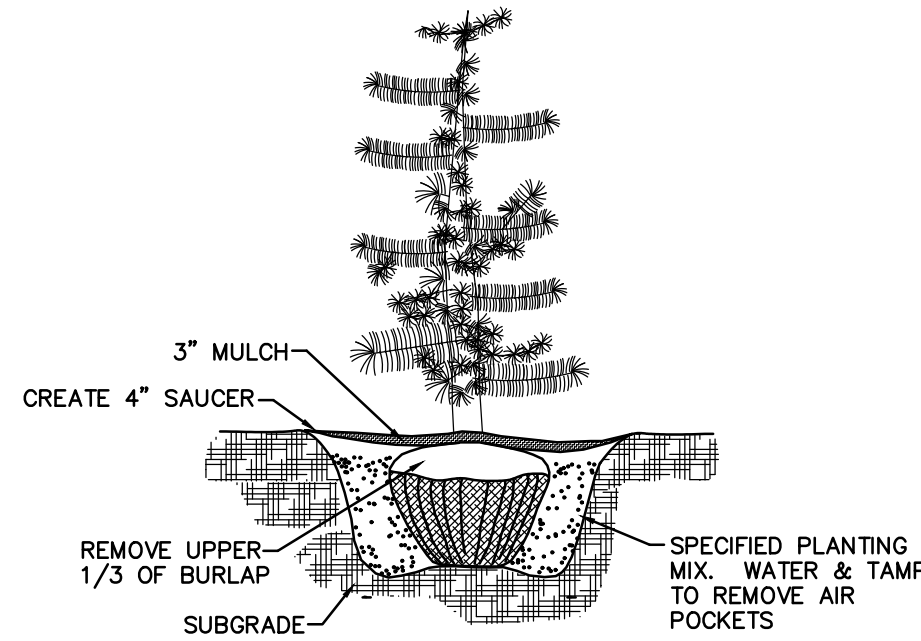
N.T.S.



NOTE: SEE LANDSCAPE NOTES FOR THE TYPE OF MULCH MATERIAL TO USE.

### TREE PLANTING

N.T.S.



### EVERGREEN PLANTING DETAIL

N.T.S.

### PLANT SCHEDULE

TAG	QTY	SCIENTIFIC NAME	COMMON NAME	COND.	SIZE	REMARKS
<b>SHADE TREE</b>						
AF	11	Acer x freemanii 'Jeffersred'	Autumn Blaze Maple	B&B	2.5" cal. 14'ht. 7'wd	Full, well shaped
CO	11	Celtis occidentalis 'Prairie Pride'	Prairie Pride Hackberry	B&B	2.5" cal. 14'ht. 7'wd	Native, Full, well shaped
GT	8	Gleditsia triacanthos var. inermis 'Impcole'	Imperial Honeylocust	B&B	2.5" cal. 14'ht. 7'wd	Full, well shaped
GD	9	Gymnocladus dioica 'Espresso'	Fruitless KY Coffeetree	B&B	2.5" cal. 14'ht. 7'wd	Native, Full, well shaped
PO	9	Platanus occidentalis	American Sycamore	B&B	2.5" cal. 14'ht. 7'wd	Native, Full, well shaped
QB	9	Quercus bicolor	Swamp White Oak	B&B	2.5" cal. 14'ht. 7'wd	Full, well shaped
QR	10	Quercus rubrum	Northern Red Oak	B&B	2.5" cal. 14'ht. 7'wd	Full, well shaped
TD	9	Taxodium distichum 'Shawnee Brave'	Shawnee Brave Bald Cypress	B&B	2.5" cal. 14'ht. 7'wd	Native, Full, well shaped
TA	7	Tilia americana 'Redmond'	Redmond American Linden	B&B	2.5" cal. 14'ht. 7'wd	Native, Full, well shaped
UA	10	Ulmus americana 'Princeton'	Princeton American Elm	B&B	2.5" cal. 14'ht. 7'wd	Full, well shaped
<b>ORNAMENTAL / EVERGREEN TREE</b>						
AG	5	Amelanchier x grandiflora 'Autumn Brilliance'	Apple Serviceberry	B&B	2" cal. 6'ht. 3'wd.	Full, well shaped, single-stem
BN	5	Betula nigra 'BNMTF'	Dura Heat River Birch	B&B	2" cal. 6'ht. 3'wd.	Native, Full, well shaped, single-stem
CC	6	Cercis canadensis	Eastern Redbud	B&B	2" cal. 6'ht. 3'wd.	Native, Full, well shaped, single-stem
CR	9	Crataegus crus-galli var. inermis 'Cruzom'	Crusader Hawthorn	B&B	2" cal. 6'ht. 3'wd.	Native, Full, well shaped, single-stem
JK	3	Juniperus chinensis 'Keteleeri'	Keteleeri Upright Juniper	B&B	6'ht. x 3'wd.	Full to ground, well shaped
OV	9	Ostrya virginiana	American Hop Hornbeam	B&B	2" cal. 6'ht. 3'wd.	Full, well shaped, single-stem
PG	5	Picea glauca 'Densata'	Black Hills Spruce	B&B	6'ht. x 3'wd.	Full to ground, well shaped
PS	7	Pinus strobus 'Fastigiata'	Columnar Eastern White Pine	B&B	6'ht. x 3'wd.	Full to ground, well shaped
<b>EVERGREEN SHRUB</b>						
BU	126	Buxus x 'Glencoe'	Chicagoland Green Boxwood	#3 cont.	18"ht. x 18"wd.	Full, vigorous
JS	133	Juniperus chinensis sargentii 'Viridis'	Green Sargent Juniper	#3 cont.	12"ht. x 18"wd.	Full, vigorous, 4' o.c.
JH	137	Juniperus horizontalis	Creeping Juniper	#3 cont.	12"ht. x 18"wd.	Native, Full, vigorous, 4' o.c.
PM	151	Pinus mugo 'Slowmound'	Dwarf Mugo Pine	#3 cont.	12"ht. x 18"wd.	Full, vigorous
TM	82	Taxus x media 'Densiformis'	Dense Yew	#3 cont.	18"ht. x 18"wd.	Full, vigorous
TM1	15	Taxus x media 'Densiformis'	Dense Yew	#5 cont.	36"ht. x 24"wd.	Full, vigorous
TE	97	Taxus x media 'Everlow'	Everlow Yew	#3 cont.	12"ht. x 18"wd.	Full, vigorous
<b>DECIDUOUS SHRUB</b>						
CA	92	Cotoneaster adpressus	Creeping Cotoneaster	#3 cont.	12"ht. x 18"wd.	Full, vigorous, 4' o.c.
CE	93	Ceanothus americanus	New Jersey Tea	#3 cont.	18"ht. x 18"wd.	Native, Full, vigorous
FV	96	Forsythia viridissima 'Bronxensis'	Greenstem Forsythia	#3 cont.	12"ht. x 18"wd.	Full, vigorous, 4' o.c.
HP	79	Hydrangea paniculata 'Bobo'	Bobo Panicle Hydrangea	#5 cont.	24"ht. x 24"wd.	Full, vigorous
HP1	18	Hydrangea paniculata 'Bobo'	Bobo Panicle Hydrangea	#5 cont.	36"ht. x 24"wd.	Full, vigorous
HK	93	Hypericum kalmianum 'Blues Festival'	Blues Festival St Johns Wort	#3 cont.	18"ht. x 18"wd.	Native, Full, vigorous
LB	90	Lindera benzoin	Spicebush	#5 cont.	24"ht. x 24"wd.	Native, Full, vigorous
LB1	18	Lindera benzoin	Spicebush	#5 cont.	36"ht. x 24"wd.	Native, Full, vigorous
RA	132	Rhus aromatica 'Gro-Low'	Gro-Low Fragrant Sumac	#3 cont.	12"ht. x 18"wd.	Native, Full, vigorous, 4' o.c.
RO	100	Rosa x 'Noaschnee'	White Carpet Rose	#3 cont.	12"ht. x 18"wd.	Full, vigorous
SJ	86	Spiraea japonica 'Shirobana'	Shirobana Spirea	#3 cont.	12"ht. x 18"wd.	Full, vigorous
ST	123	Stephanandra incisa 'Crispa'	Cutleaf Stephanandra	#3 cont.	12"ht. x 18"wd.	Full, vigorous, 4' o.c.
<b>ORNAMENTAL GRASS</b>						
CF	28	Calamagrostis x acutiflora 'Karl Forester'	Feather Reed Grass	#1 cont.		Full, vigorous
CL	63	Chasmanthium latifolium	Northern Sea Oats	#1 cont.		Native, Full, vigorous
FG	92	Festuca glauca 'Elijah Blue'	Elijah Blue Fescue	#1 cont.		Full, vigorous
HS	48	Helictotrichon sempervitens avena	Blue Oats Grass	#1 cont.		Full, vigorous
MS	55	Miscanthus sinensis 'Little Zebra'	Little Zebra Grass	#1 cont.		Full, vigorous
PV	57	Panicum virgatum 'Hot Rod'	Hot Rod Red Switchgrass	#1 cont.		Native, Full, vigorous
PE	54	Pennisetum alopecuroides 'Hamelin'	Dwarf Fountain Grass	#1 cont.		Full, vigorous
SH	96	Sporobolus heterolepis	Prairie Dropseed	#1 cont.		Native, Full, vigorous
<b>PERENNIAL</b>						
AT	64	Asclepias tuberosa	Butterfly Weed	#1 cont.		Native, Full, vigorous
BA	99	Baptisia australis var. minor	Dwarf False Indigo	#1 cont.		Native, Full, vigorous
GE	57	Geranium 'Rozanne'	Rozanne Geranium	#1 cont.		Full, vigorous
LM	86	Liriope muscari 'Big Blue'	Big Blue Lilyturf	#1 cont.		Full, vigorous
NF	96	Nepeta x foassenii 'Purrsian Blue'	Purrsian Blue Catmint	#1 cont.		Full, vigorous
RH	40	Rudbeckia fulgida 'Goldsturm'	Black-Eyed Susan	#1 cont.		Native, Full, vigorous
SN	62	Salvia nemorosa 'Mainacht'	May Night Salvia	#1 cont.		Full, vigorous
SE	62	Sedum ellacombianum	Yellow Stonecrop	#1 cont.		Full, vigorous
SA	77	Sedum 'Autumn Joy'	Autumn Joy Stonecrop	#1 cont.		Full, vigorous
VE	82	Veronica 'Hocus Pocus'	Magic Show Veronica	#1 cont.		Full, vigorous

\* QUANTITIES ARE PROVIDED FOR CONVENIENCE ONLY. CONTRACTOR IS RESPONSIBLE FOR ALL QUANTITIES OF PLANTS ON LANDSCAPE PLAN.

### PLANT DIVERSITY

PLANT TYPE	# PLANTS	MAX # OF INDIVIDUAL SPECIES	MAX # OF INDIVIDUAL SPECIES PROVIDED	MIN # OF INDIVIDUAL SPECIES	MIN # OF INDIVIDUAL SPECIES PROVIDED	MIN # OF NATIVE PLANTS (30%)	# OF NATIVE PLANTS PROVIDED	MIN # OF DIFFERENT SPECIES	# OF DIFFERENT SPECIES PROVIDED
Shade Tree	93	27.9	11	4.6	7	27.6	45 (48%)	8	10
Ornamental Tree	34	13.6	9	3.4	5	9.3	20 (58%)	5	5
Evergreen Tree	15	6.75	7	3	3	4.5	7 (46%)	3	3
Shrub	1,761	265.5	151	88.5	86	531	566 (31%)	15	15
Ornamental Grass	493	147.9	92	24.6	28	147.9	216 (43%)	8	8
Perennial	725	181.5	96	36.3	42	209.4	199 (27%)	10	10

### PERMANENT SOD BLEND

- 90% FINE LEAF FESCUE (FESTUCA ARUNDINACEA)
- REBEL II, WRANGLER, BONANZA, MOJAVE OR EQUAL
- 10% KENTUCKY BLUEGRASS (POA PRATENSIS)
- MIDNIGHT, RUGBY II, MIDIRON VARIETIES OR EQUAL
- PURITY AND 85% GERMINATION
- 95% WEED FREE

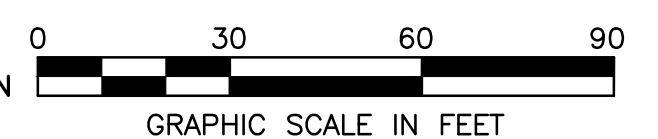
LAWN AREA (1,700 SF)  
PLUS ALL DISTURBED EXISTING TURF TO REMAIN

### BENCHMARK (⊙):

THE BASIS OF ELEVATIONS HEREON IS NAVD 88 PER OBSERVATIONS OF SELECTED STATIONS IN THE NATIONAL GEODETIC SURVEY CONTINUOUSLY OPERATING REFERENCE STATION (NGS CORN) NETWORK. IRON PIPE IN CONCRETE FOUND - SEE DRAWING FOR LOCATION.

ELEVATION = 706.60'

THE EXISTING CONDITIONS SHOWN ARE BASED UPON A SURVEY PREPARED BY WOOLPERT AND DATED 05/31/19.



**WARNING! HIGH PRESSURE PIPELINE**  
EXCAVATION AND/OR CONSTRUCTION PROHIBITED WITHOUT PRIOR WRITTEN PERMISSION FROM ENTERPRISE PRODUCTS OPERATING LLC

**REVISION**

No.	DATE	FOR PUD REVIEW
13	09/11/20	FOR PUD REVIEW
11	09/01/20	REVISED PER VILLAGE COMMENTS
9	06/26/20	REVISED PER VILLAGE COMMENTS
4	02/25/20	REVISED PER VILLAGE AND MWRD COMMENTS
3	02/14/20	REVISED SITE PLAN PER CLIENT
2	01/29/20	REVISED PER VILLAGE REVIEW

PROJECT No: 079572  
 DATE 10/02/19  
 DES. JC  
 DR. JM  
 CKD. JG

1815 South Meyers Road  
 Suite 950  
 Oakbrook Terrace, IL 60181  
 630.424.9080  
 FAX: 630.495.3731

**WOOLPERT**  
 ARCHITECTURAL ENGINEERING & LANDSCAPE

**SITE IMPROVEMENT PLANS**  
**LAGRANGE SQUARE**  
 45 ORLAND SQUARE DRIVE  
 ORLAND PARK, COOK COUNTY, IL 60462

**LANDSCAPE DETAILS**

SHEET NO. **C501**