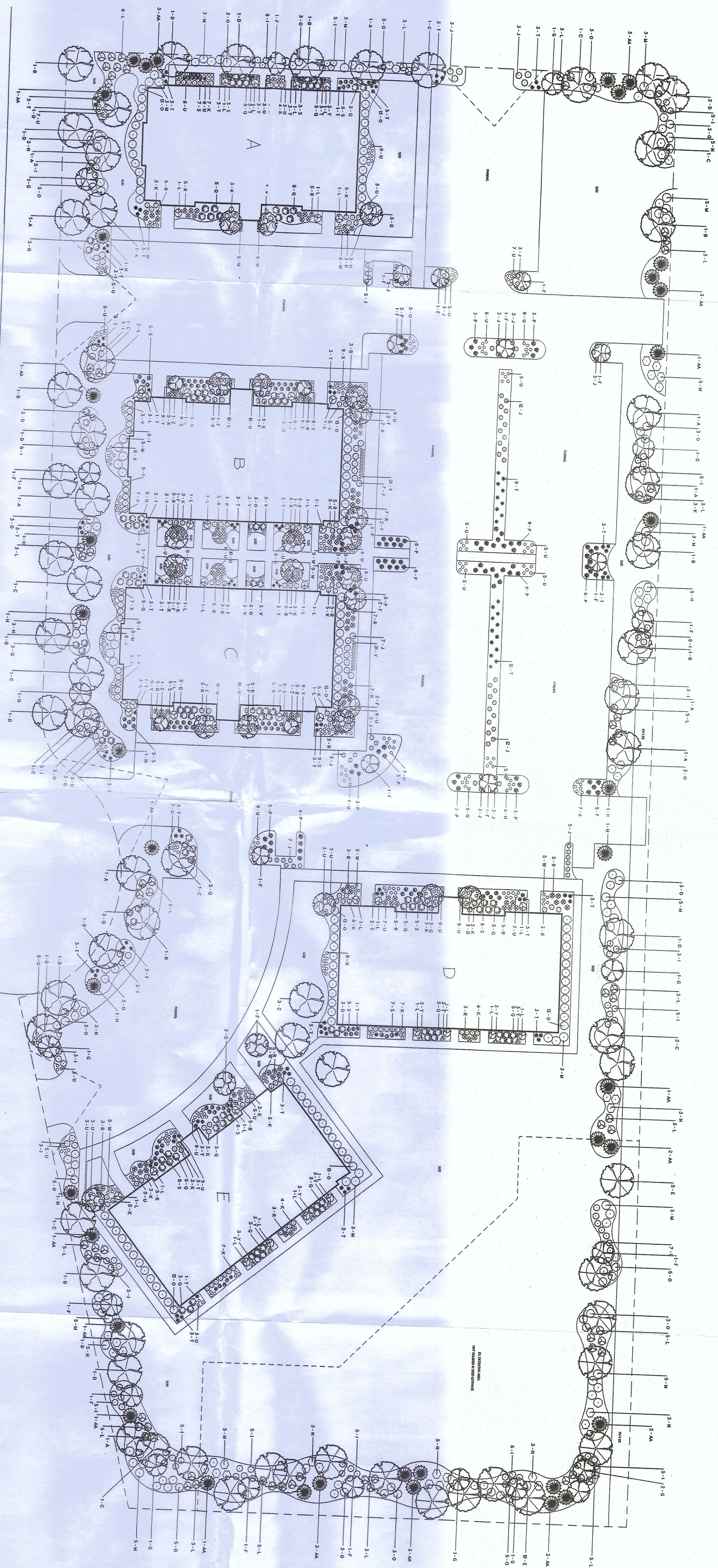


# WINTERSET GLEN OAKS PHASE 5 ORLAND PARK, ILLINOIS



QTY	KEY	BOTANICAL NAME	COMMON NAME	SIZE	REMARKS
12	A	<i>Acer platanoides</i>	Norway Maple	2.5"	Central Leader
10	B	<i>Gleditsia triacanthos</i> v. <i>inermis</i>	Thornless Honeylocust	2.5"	Central Leader
15	C	<i>Prunella albertiana</i>	Chamisaire Pear	2.5"	Central Leader
13	D	<i>Quercus laevis</i>	Swamp White Oak	2.5"	Central Leader
15	E	<i>Rubus idaeus</i>	Ruby Red	10" tall	Multi-stem
35	F	<i>Malus sp.</i>	Flowering Crabapple	2.5" tall	Central Leader
20	G	<i>Aunshchier canadensis</i>	Shrub Dogwood	2.5" tall	Central Leader
8	H	<i>Picea mariana</i>	Jack Pine	6"	Shrub
128	I	<i>Juniperus chinensis</i> v. <i>horizontalis</i>	Blue Cedar	28"	Shrub
91	J	<i>Juniperus chinensis</i> v. <i>horizontalis</i>	Blue Cedar	28"	Shrub
133	K	<i>Taxus media</i>	Eastern White Pine	18" tall	3" oc.
114	L	<i>Thuja occidentalis</i>	Green Cedar	18" tall	3" oc.
59	M	<i>Thuja occidentalis</i>	Green Cedar	36" tall	4" oc.
51	N	<i>Thuja occidentalis</i>	Green Cedar	36" tall	5" oc.
104	O	<i>Thuja occidentalis</i>	Green Cedar	36" tall	5" oc.
56	P	<i>Thuja occidentalis</i>	Green Cedar	36" tall	3" oc.
125	Q	<i>Syringa pinnatifida</i>	French Lilac	18" tall	3" oc.
158	R	<i>Spiraea japonica</i>	Japanese Spirea	18" tall	3" oc.
101	S	<i>Campanula medium</i> v. <i>caroliniana</i>	Campanula	18" tall	3" oc.
127	T	<i>Campanula medium</i> v. <i>caroliniana</i>	Campanula	18" tall	3" oc.
323	U	<i>Hemocallis flava</i> 'Shahii'	Shade de Oro Daylily	18" tall	18" oc.
75	V	<i>Rudbeckia hirta</i> v. <i>de Oro</i>	Black-eyed Susan	18" tall	18" oc.
48	W	<i>Sedum spectabile</i> v. <i>autumnale</i>	Autumn Joy Sedum	18" tall	18" oc.
48	X	<i>Malva sylvestris</i> v. <i>multifida</i>	Walker's Low Camellia	18" tall	18" oc.
114	Y	<i>Geranium sanguineum</i> v. <i>maximum</i>	Max Red Camellia	18" tall	18" oc.
4	Z				

NOTE: BALDERS A, D & E USE THE SAME QUANTITIES OF MATERIAL, AND BALDERS B & C USE THE SAME AMOUNTS OF MATERIAL.

<b>WINTERSET</b> GLEN OAKS PHASE 5 ORLAND PARK, IL			
client:	scale:	date:	revision:
	1" = 30'	1/28/08	
drawn by:	checked by:	drawing #:	
KLT		PG. 2	