

Clerk's Contract and Agreement Cover Page

Year: 2008-0

Legistar File ID#:

Multi Year:



Amount

\$0.00

Contract Type:

Professional Services

Contractor's Name:

McDonough Associates Inc

Contractor's AKA:

Execution Date:

3/4/2008

Termination Date:

12/31/2009

Renewal Date:

Department:

Public Works

Originating Person:

Denise Domalewski/Pete Casey

Contract Description:

Professional Engineering Services General Contract
2008-2009

12.1.09 - addendum to extend contract thru 2010

12/23/10 Addendum B - extending General through
2011

1/20/11 - 143rd SW Hghwy Realignment \$9938.04 (PO
59353)

6/10/11 - Change Services Wolf Rd & 183rd St Water
Main \$11,130.00 (4/14/11 proposal)

5/31/11 \$2,666.00 Wolf Rd & 183rd WM Constrution
Services

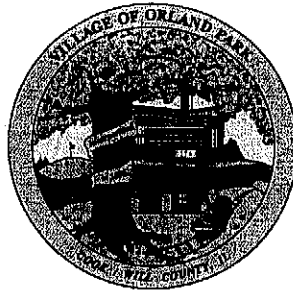
9/1/11 -\$210,752 PH1 143rd - SWHwy to Wolf 2011-
0351

9/1/11 \$420,699.80 Ph2 143rd - Wolf to Will Cook 2011-
0353

11/9/11 \$74,400 LaGrange Rd Seg 1 & 3 Water Main &
Sanitary Forcemain

1/12/12 - 143rd watermain phase 2 Southwest Highway
to Will-Cook (\$29,000; \$70,900; \$40,305.55)

MAYOR
Daniel J. McLaughlin
VILLAGE CLERK
David P. Maher
14700 S. Ravinia Ave.
Orland Park, IL 60462
(708) 403-6100
www.orland-park.il.us



VILLAGE HALL

TRUSTEES
Kathleen M. Fenton
Brad S. O'Halloran
James V. Dodge
Edward G. Schussler III
Patricia A. Gira
Carole Griffin Ruzich

January 12, 2012

Mr. Michael P. Hannemann, P.E.
McDonough Associates Inc.
16634 South 107th Court
Orland Park, Illinois 60467-8898

RE: NOTICE TO PROCEED

Engineering Design (Phase II) – 143rd Street Water Main

- ***Southwest Highway to Union Street Option 2 \$29,000***
- ***Union Street to Wolf Road Option 2 \$70,900***
- ***Wolf Road to Will-Cook Road Option 1 \$40,305.55***

Dear Mr. Hannemann:

This notification is to inform you that the Village of Orland Park has accepted and signed the three (3) proposals for the Engineering Design (Phase II) – 143rd Street Water Main (Southwest Highway to Union Street; Union Street to Wolf Road; and Wolf Road to Will-Cook Road).

Please contact John Ingram at 708-403-6104 regarding the work.

The Village will be processing a Purchase Order for this contract/service and faxing it to your company. It is imperative that this number on the Purchase Order be noted on all invoices, correspondence, etc. All invoices should be sent directly to the Accounts Payable Department at 14700 S. Ravinia Ave. Orland Park, IL 60462. Also, your final invoice for this contract/service should state that it is the final invoice pertaining to that Purchase Order.

For your records, I have enclosed one (1) original executed proposal for each segment signed January 10, 2012 for a grand total amount not to exceed One Hundred Forty Thousand Two Hundred Five and 55/100 (\$140,205.55) Dollars. If you have any questions, please call me at 708-403-6173.

Sincerely,

A handwritten signature in black ink, appearing to read "Denise Domalewski".

Denise Domalewski
Contract Administrator

cc: John Ingram



McDonough Associates Inc.
16634 South 107th Court
Orland Park, Illinois 60467-8898
708/226-9261 Fax: 708/226-9345
www.maiengr.com

August 29, 2011

Village of Orland Park
Department of Public Works
15655 Ravinia Avenue
Orland Park, Illinois 60462

Attn: Mr. Edward Wilmes
Director of Public Works

Re: Proposal for Engineering Design (Phase II) Services
Water Main – 143rd Street at Southwest Highway to Union Street

Dear Mr. Wilmes,

In response to the request and comments of Mr. John Ingram of your Department, MAI is pleased to present this Proposal to the Village of Orland Park for the design of a water system loop connection at 143rd Street and Southwest Highway/Union Street. We were requested to provide a proposal outlining 3 separate options to perform the work. Option 1 would include the water main work in the IDOT intersection improvement plans for the Southwest Highway re-alignment and 143rd Street work, pending IDOT approval. Option 2 would include the water main work in the IDOT improvement plans of 143rd at union without the Southwest Highway realignment, and Option 3 would be to replace existing aged mains on 143rd from the METRA crossing to Union Street, without re-alignment of Southwest Highway, as a stand-alone permit contract prior to the IDOT Improvement.

Option 1 – Water main improvements to be part of the IDOT intersection improvement to re-align Southwest Highway - METRA crossing to west side of Union Street

Under this option, a new water main will be designed to follow the new SW Highway alignment, if approved by IDOT, and the water main plans and specifications will be included as part of the IDOT Southwest Highway re-alignment plans. This will include development of plans and specs for approximately 440 feet of new 8-inch water main along the north side of the re-aligned Southwest Highway tying into the Union 8-inch water main on the west and an 8-inch near the east end of the realignment, 340 feet of new 12-inch water main along the north side of 143rd from the METRA crossing to approximately 60 feet west of the west ROW of Union, then south 80 feet across 143rd, with an 8-inch connection about 30 feet to the north valve on the existing Union 8-inch on the north side and an 8-inch connection about 80 feet to the south valve of the existing Union 8-inch main on the south side.

We propose a lump sum fee for Option 1 professional services of **\$22,700.00**. This includes application for any water main related permits, with fees – if any – to be paid by the Village.



Option 2 – Water main improvements to be part of the IDOT 143rd Street improvement if there is no approved re-alignment of Southwest Highway - METRA crossing to west side of Union Street

Under this option, a new water main will be designed to replace aged mains from METRA to Union Street and the water main plans and specifications will be included as part of the IDOT 143rd Street improvement plans without a SW Highway re-alignment. This will include development of plans and specs for 140 feet of new 12-inch water main along the north side of 143rd from the METRA crossing to approximately 60 feet west of the west ROW of Union, then south 80 feet across 143rd, with an 8-inch connection about 30 feet to the north valve on the existing Union 8-inch on the north side and an 8-inch connection about 80 feet to the south valve of the existing Union 8-inch main on the south side.

We propose a lump sum fee for Option 2 professional services of **\$18,700.00**. This includes application for any water main related permits, with fees – if any – to be paid by the Village.

Option 3 – METRA crossing to West side of Union Street without re-alignment of Southwest Highway – Complete bid set for water improvements to be done as an IDOT Permit Contract prior to the IDOT Road Improvements.

This option is the development of a complete bid document including plans and specifications for the proposed water main to be constructed as an IDOT Permit Contract in this area if the realignment of Southwest Highway is not approved by IDOT to be included in the 143rd Street Improvement. The work will include development of bid documents for approximately 220 feet of new 12-inch water main to replace the existing 12-inch main from the northwest corner of Southwest Highway and 143rd, west across Union, then to tie into the Union 8-inch main and continue west to a point about 80 feet west of Union then south across 143rd Street, and 130 feet of new 8-inch water main along Union to replace the existing main between existing valves on north and south sides of 143rd Street. This work will most likely require trenchless installation under 143rd Street, and easements may be required for jacking/receiving, which is not included in this scope if timing with the future 143rd improvement is not possible.

We propose a lump sum fee for Option 2 professional services of **\$29,000.00**. This includes application for any water main related permits, with fees – if any – to be paid by the Village.

This proposal for the above options does not include design work necessitated by unforeseen conditions; extraordinary utility conflicts; and poor soils conditions. Any additional services requested by the Village or due to unforeseen conditions that would result in a change of Scope will not commence unless given prior authorization.

These services will commence immediately upon receipt from the Village of the Notice to Proceed on the selected option and will be completed in conjunction with the IDOT project schedule as applicable. If you have any questions regarding this proposal, please contact the undersigned. Thank you for the opportunity to be of service.



Very truly yours,
McDONOUGH ASSOCIATES INC.

A handwritten signature in black ink, appearing to read "Michael P. Hannemann".

Michael P. Hannemann, P.E.
Sr. Vice President

Encls: Scope of Services and Fee

cc: F. Nathani, MAI
A. Swanson, MAI
S. Ravanese, MAI
T. Werner, MAI
File

Approved & Accepted by
Village of Orland Park

A handwritten signature in black ink, appearing to read "Paul G. Grimes".

Paul G. Grimes, Village Manager

1/10/12
Date

PROPOSED SCOPE OF SERVICES AND FEE
Village of Orland Park, IL
Water Main – 143rd Street at Southwest Highway to Union Street
Option 1 - Part of the IDOT Intersection improvement to re-align Southwest Highway -
METRA crossing to west side of Union Street

<u>TASK</u>	<u>TASK DESCRIPTION</u>	<u>HOURS</u>
1	Pre-Design Phase Services	
	1.1 Project Kick-off Meeting	2
	1.2 Right-of-Way and Easement Information	2
	1.3 Review Existing Information and Documents	4
	1.4 Review & Coordinate Subsurface Utility Engineering Evaluation	4
	1.5 Jurisdiction Agency/Organization Coordination	12
	TOTAL	24
2	Design Phase Services	
	2.1 Preparation of Drawings	101
	2.2 Preparation of Technical Specifications	20
	2.3 Summary of Quantities	8
	2.4 In-house Quality Control Reviews	4
	2.5 Jurisdiction Agency Coordination and Permitting	16
	2.6 Meetings & Communications with Village	4
	2.7 Public Meeting	2
	TOTAL	155
	Total Labor Hours -	179
 Summary of Costs		
	Total Labor Costs -	\$126.00/Hour 22,554.00
	Other Direct Costs	
	Travel	\$ 25.00
	Inhouse Printing/Copying	\$ 25.00
	Outside Printing/Copying/Scanning	\$ 96.00
	Total Direct Costs -	\$ 146.00
	Total Lump Sum Cost	\$ 22,700.00

PROPOSED SCOPE OF SERVICES AND FEE
Village of Orland Park, IL
Water Main – 143rd Street at Southwest Highway to Union Street
Option 2 - METRA crossing to West side of Union Street -no re-alignment of Southwest Highway – Part of IDOT Contract Set

<u>TASK</u>	<u>TASK DESCRIPTION</u>	<u>HOURS</u>
1	Pre-Design Phase Services	
	1.1 Project Kick-off Meeting	4
	1.2 Right-of-Way and Easement Information	2
	1.3 Review Existing Information and Documents	6
	1.4 Review & Coordinate Subsurface Utility Engineering Evaluation	8
	1.5 Jurisdiction Agency/Organization Coordination	16
	TOTAL	36
2	Design Phase Services	
	2.1 Preparation of Drawings	63
	2.2 Preparation of Technical Specifications	16
	2.3 Summary of Quantities	4
	2.4 In-house Quality Control Reviews	4
	2.5 Jurisdiction Agency Coordination and Permitting	16
	2.6 Meetings & Communications with Village	8
	2.7 Public Meeting	0
	TOTAL	111
	Total Labor Hours -	147

Summary of Costs

Total Labor Costs -	\$126.00/Hour	18,522.00
Other Direct Costs		
Travel		\$ 25.00
Inhouse Printing/Copying		\$ 25.00
Outside Printing/Copying/Scanning		\$ 128.00
	Total Direct Costs -	\$ 178.00
Total Lump Sum Cost		\$ 18,700.00

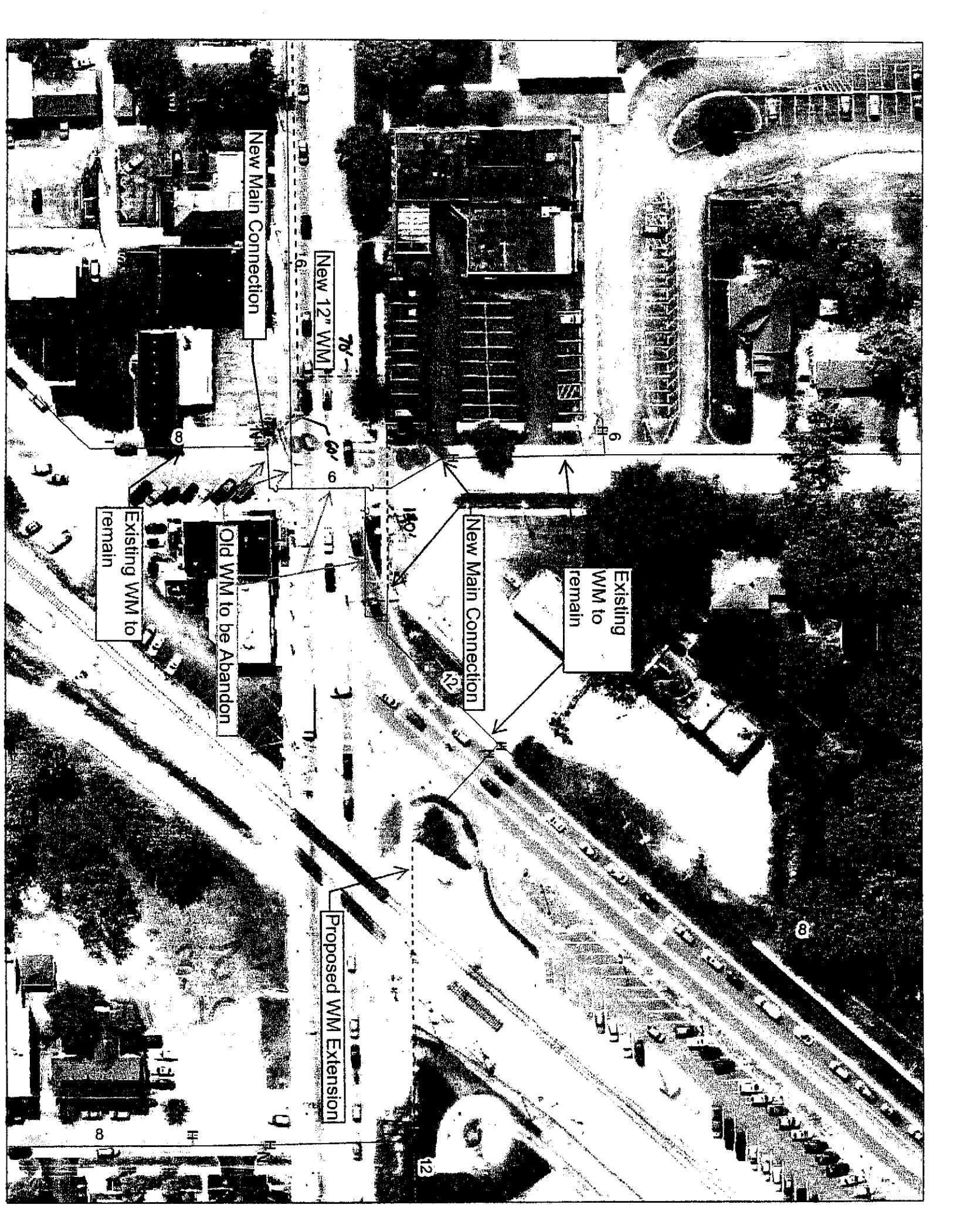
PROPOSED SCOPE OF SERVICES AND FEE

Village of Orland Park, IL

Water Main – 143rd Street at Southwest Highway to Union Street

Option 3 - METRA crossing to West side of Union Street -no re-alignment of Southwest Highway – Contract Set for Permit Prior to IDOT Improvement

<u>TASK</u>	<u>TASK DESCRIPTION</u>	<u>HOURS</u>
1	Pre-Design Phase Services	
	1.1 Project Kick-off Meeting	4
	1.2 Right-of-Way and Easement Information	2
	1.3 Review Existing Information and Documents	6
	1.4 Review & Coordinate Subsurface Utility Engineering Evaluation	8
	1.5 Survey - Water limits and Base Drawing Development	16
	1.6 Jurisdiction Agency/Organization Coordination	20
	TOTAL	<hr/> 56
2	Design Phase Services	
	2.1 Preparation of Drawings	93
	2.2 Preparation of Technical Specifications and Bidding Documents	24
	2.3 Summary of Quantities	6
	2.4 In-house Quality Control Reviews	6
	2.5 Furnish Final Drawings and Special Provisions	3
	2.5 Jurisdiction Agency Coordination and Permitting	24
	2.6 Meetings & Communications with Village	8
	2.7 Advertising and Pre Bid meeting	4
	2.8 Bid Review and Award Recommendation	4
	2.7 Public Meeting	0
	TOTAL	<hr/> 172
	Total Labor Hours -	228
Summary of Costs		
	Total Labor Costs -	\$126.00/Hour 28,728.00
	Other Direct Costs	
	Travel	\$ 25.00
	Inhouse Printing/Copying	\$ 100.00
	Outside Printing/Copying/Scanning	\$ 147.00
	Total Direct Costs -	\$ 272.00
	Total Lump Sum Cost	\$ 29,000.00



New Main Connection

New 12" WM

Existing WM to remain

Old WM to be Abandon

New Main Connection

Existing WM to remain

Proposed WM Extension

8

6

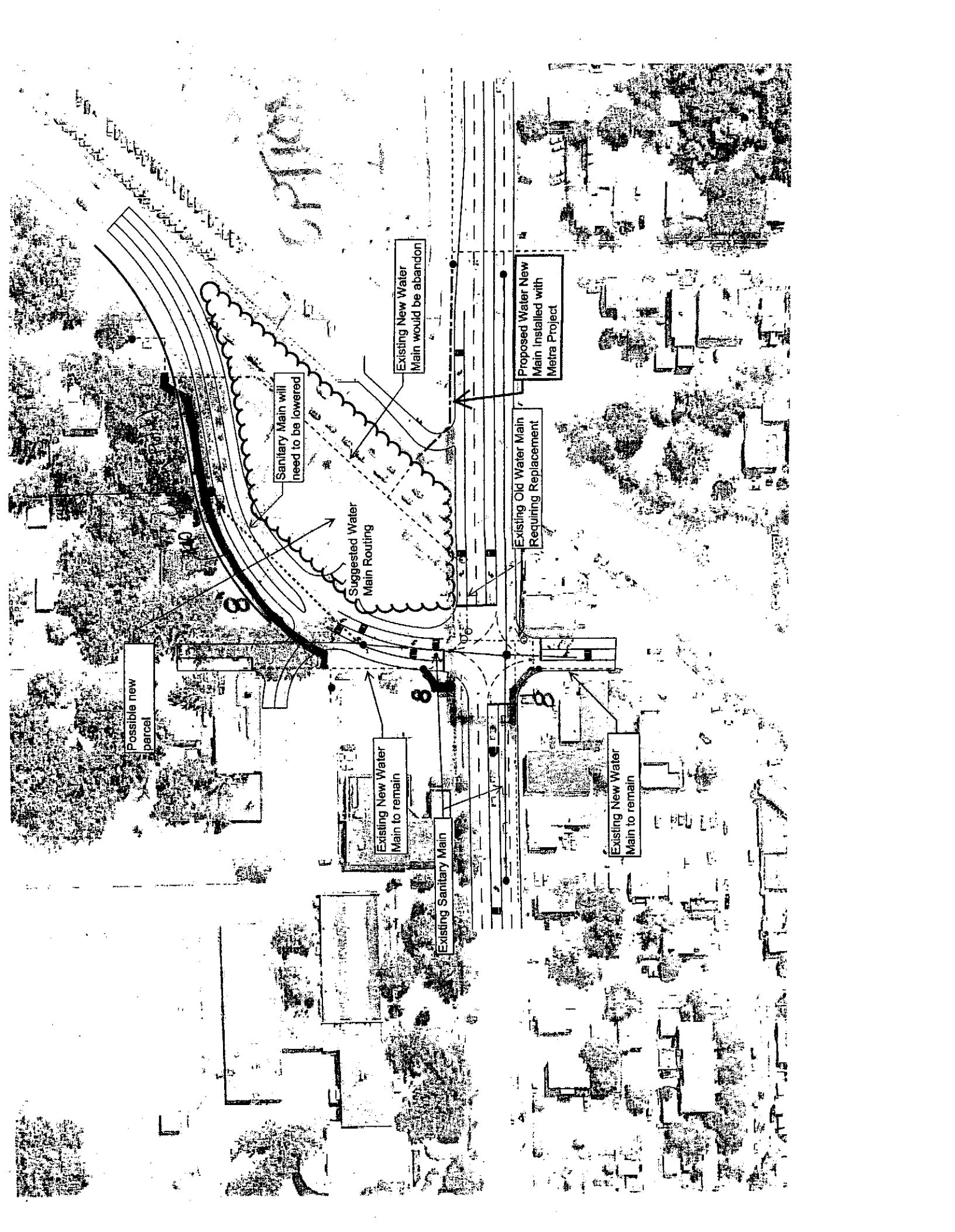
140'

92'

8

8

12



Possible new parcel

Sanitary Main will need to be lowered

Suggested Water Main Routing

Existing New Water Main would be abandon

Proposed Water New Main Installed with Metra Project

Existing Old Water Main Requiring Replacement

Existing New Water Main to remain

Existing Sanitary Main

Existing New Water Main to remain



McDonough Associates Inc.
16634 South 107th Court
Orland Park, Illinois 60467-8898
708/226-8261 Fax: 708/226-8346
www.maiengr.com

July 15, 2011

Village of Orland Park
Department of Public Works
15655 Ravinia Avenue
Orland Park, Illinois 60462

Attn: Mr. Edward Wilmes
Director of Public Works

Re: Proposal for Engineering Design (Phase II) Services
Water Main – 143rd Street from Union Street to Wolf Road

Dear Mr. Wilmes,

In response to the request of Mr. John Ingram of your Department, MAI is pleased to present this Proposal to the Village of Orland Park for the design of a water system loop connection along 143rd Street from Union Street to Wolf Road. We were requested to provide a proposal outlining 2 separate options to perform the work. **Option 1** would be the development of plans and specs to include the water main work in the IDOT 143rd Street roadway improvement project bid documents. **Option 2** would be the development of a complete set of bid documents, plans and specifications for the water main to be constructed under permit prior to the IDOT improvement.

The design of the proposed water main in this section will include development of plans and specifications for approximately 4,300 feet of new 12-inch water main from Union Street to Crystal Tree Drive with a Pressure Regulating or Check Valve, approximately 750 feet of new 16-inch water main east of Deer Haven Lane on the south side of 143rd Street to fill a gap in the existing 16-inch main, and approximately 700 feet of new 16-inch water main east of Wolf Road on the south side of 143rd St. to fill a gap in the existing 16-inch main.

Option 1 – Union Street to Wolf Road 12” and 16” main – To be included as a part of the IDOT Improvement Contract

The work involves design of the above water main plans and specs to be included in the IDOT improvement of this section of 143rd Street. This proposal assumes the use of the IDOT road improvement plan base sheets for the development of the water main plans and does not include any geotechnical or wetland reviews or permitting, which will be provided as additional services if required.

We propose a lump sum fee for these Option 1 professional services of **\$52,200.00**. This includes application for any water main related permits, with fees – if any – to be paid by the Village.



Option 2 – Union Street to Wolf Road 12” and 16” main – Complete bid set for water main work to be done as a permit prior to the IDOT Road Improvements.


The option involves the development of a full bid document set, in addition to the plans and specs for the improvement. This proposal assumes the use of the existing Phase 1 survey for the plans and does not include any geotechnical or wetland reviews or permitting, which will be provided as additional services if required.

We propose a lump sum fee for Option 2 professional services of **\$70,900.00**. This includes application for any water main related permits, with fees – if any – to be paid by the Village.

This proposal does not include design work necessitated by unforeseen conditions; extraordinary utility conflicts; and poor soils conditions. Any additional services requested by the Village or due to unforeseen conditions that would result in a change of Scope will not commence unless given prior authorization.

These services will commence immediately upon receipt from the Village of the Notice to Proceed on the selected option and will be completed in conjunction with the IDOT project schedule as applicable. If you have any questions regarding this proposal, please contact the undersigned. Thank you for the opportunity to be of service.

Very truly yours,
McDONOUGH ASSOCIATES INC.


Michael P. Hannemann, P.E.
Sr. Vice President

Encls: Scope of Services
VOP – Improvement limit sketch

cc: F. Nathani, MAI
A. Swanson, MAI
S. Ravanese, MAI
T. Werner, MAI
File

Approved & Accepted by
Village of Orland Park


Paul G. Grimes, Village Manager

1/10/12
Date



PROPOSED SCOPE OF SERVICES AND FEE
Village of Orland Park, IL
Water Main – 143rd Street from Union Street to Wolf Road

**Option 1 – Union Street to Wolf Road 12” and 16” main – To be included as part of the
IDOT Improvement Contract**

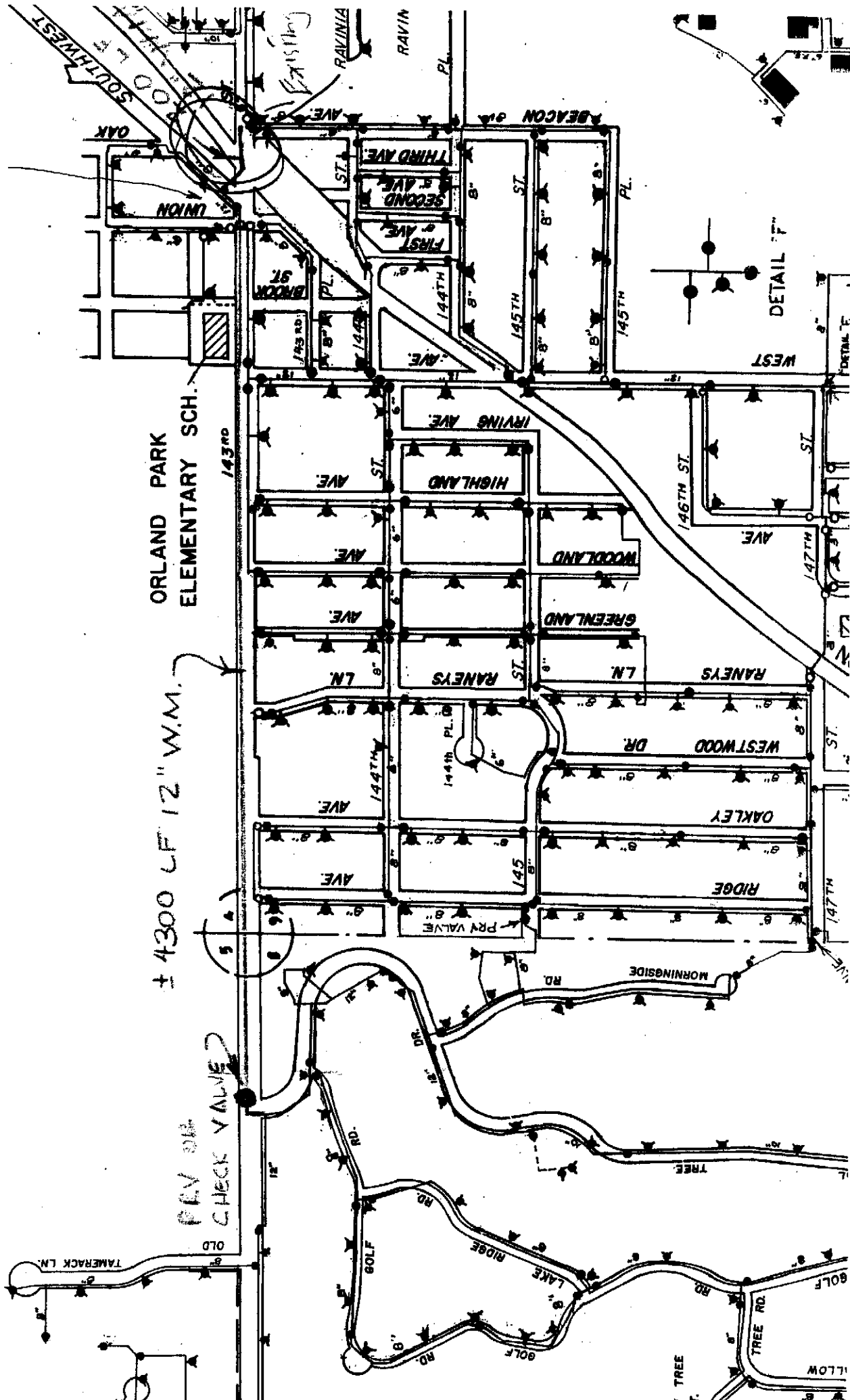
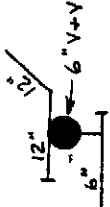
<u>TASK</u>	<u>TASK DESCRIPTION</u>	<u>HOURS</u>
1	Pre-Design Phase Services	
	1.1 Project Kick-off Meeting	2
	1.2 Right-of-Way and Easement Information	2
	1.3 Review Existing Information and Documents	2
	1.4 Review & Coordinate Subsurface Utility Engineering Evaluation	4
	1.5 Jurisdiction Agency/Organization Coordination	8
	TOTAL	<hr/> 18
2	Design Phase Services	
	2.1 Preparation of Drawings	315
	2.2 Preparation of Technical Specifications	30
	2.3 Summary of Quantities	20
	2.4 In-house Quality Control Reviews	6
	2.5 Jurisdiction Agency Coordination and Permitting	20
	2.6 Meetings & Communications with Village	4
	2.7 Public Meeting	0
	TOTAL	<hr/> 395
	Total Labor Hours -	413
Summary of Costs		
	Total Labor Costs - \$126.00/Hour	\$ 52,038.00
	Other Direct Costs	
	Travel	\$ 25.00
	Inhouse Printing/Copying	\$ 15.00
	Outside Printing/Copying/Scanning	\$ 122.00
	Total Direct Costs -	\$ 162.00
	Total Lump Sum Cost	\$ 52,200.00



PROPOSED SCOPE OF SERVICES AND FEE
Village of Orland Park, IL
Water Main – 143rd Street from Union Street to Wolf Road

**Option 2 – Union Street to Wolf Road 12” and 16” main – Complete Bid Set for Contract
to be done as Permit prior to IDOT Improvement**

<u>TASK</u>	<u>TASK DESCRIPTION</u>	<u>HOURS</u>
1	Pre-Design Phase Services	
	1.1 Project Kick-off Meeting	2
	1.2 Right-of-Way and Easement Information	4
	1.3 Review Existing Information and Documents	6
	1.4 Review & Coordinate Subsurface Utility Engineering Evaluation	8
	1.5 Jurisdiction Agency/Organization Coordination	12
	TOTAL	<hr/> 32
2	Design Phase Services	
	2.1 Preparation of Drawings	441
	2.2 Preparation of Technical Specifications	30
	2.3 Summary of Quantities	20
	2.4 In-house Quality Control Reviews	8
	2.5 Jurisdiction Agency Coordination and Permitting	20
	2.6 Meetings & Communications with Village	8
	2.7 Public Meeting	2
	TOTAL	<hr/> 529
	Total Labor Hours -	561
Summary of Costs		
	Total Labor Costs - \$126.00/hour	\$ 70,686.00
	Other Direct Costs	
	Travel	\$ 25.00
	Inhouse Printing/Copying	\$ 25.00
	Outside Printing/Copying/Scanning	\$ 164.00
	Total Direct Costs -	\$ 214.00
	Total Lump Sum Cost	\$ 70,900.00



ORLAND PARK
ELEMENTARY SCH.

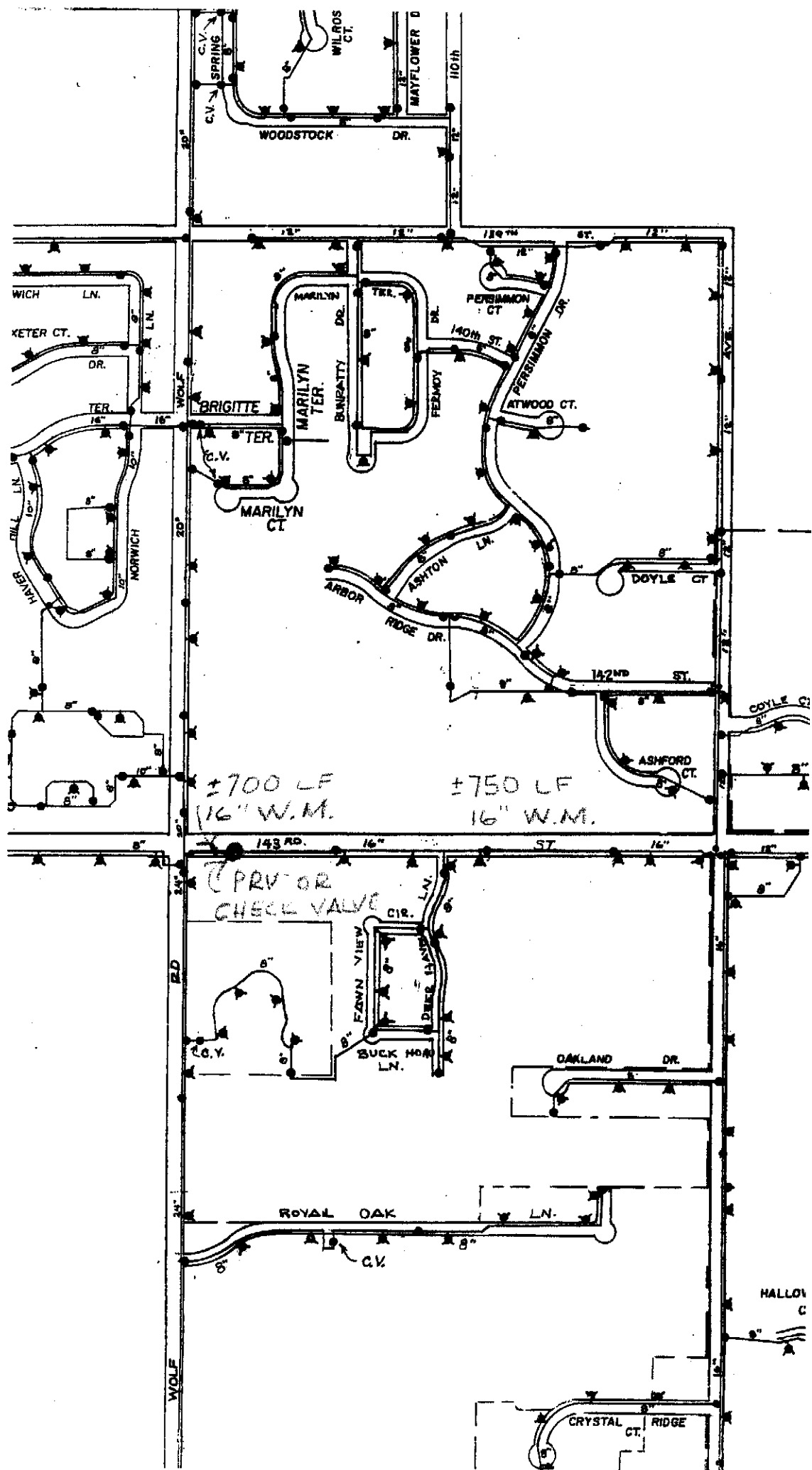
± 4300 LF 12" W.M.

PRV VALVE
CHECK VALVE

DETAIL F

TAMERACK LN.

WILLOW





McDonough Associates Inc.
16634 South 107th Court
Orland Park, Illinois 60467-8898
708/226-9261 Fax: 708/226-9345
www.malengr.com

August 29, 2011

Village of Orland Park
Department of Public Works
15655 Ravinia Avenue
Orland Park, Illinois 60462

Attn: Mr. Edward Wilmes
Director of Public Works

Re: Proposal for Engineering Design (Phase II) Services
Water Main – 143rd Street from Wolf Road to Will-Cook Road

Dear Mr. Wilmes,

In response to the request of Mr. John Ingram of your Department, MAI is pleased to present this Proposal to the Village of Orland Park for the design of an 8" water system loop connection along 143rd Street from Wolf Road to Will-Cook Road. We were requested to provide a proposal outlining 2 separate options to perform the work, the first would be the development of plans and specs to include the water main work in the IDOT 143rd Street roadway improvement project bid documents, and the second would be the development of a complete set of bid documents, plans and specifications for the water main to be constructed under permit prior to the IDOT improvement. As we discussed with John Ingram yesterday, we have looked at the second option and if done prior to the road work we feel it would be too expensive, may create too many conflicts with the future road work, and will have environmental issues that will mostly be handled in the road project.

The design of the proposed water main in this section will include development of plans and specifications for approximately 1,300 feet of new 8-inch water main from Creek Crossing Drive east towards Wolf Road. The water main passes through an area of unstable soil along the south side of 143rd Street and will likely require some additional structural support. This proposal includes the cost of a water main specific soils investigation and water main support recommendation and design. We feel we may be able to minimize this soils investigation and recommendation cost as the work proceeds, providing some savings which will be passed on to the Village.

This work will entail the development of plans and specifications for the proposed 8" water main to be included as a part of the IDOT 143rd Street Improvement Contract. This proposal assumes the use of the IDOT road improvement plan base sheets for the development of the water main plans and does not include any wetland reviews or permitting specifically for the water main, which are assumed to already be included in the roadway work.

We propose a lump sum fee for Option 1 professional services of **\$40,305.55**. This includes application to the IEPA for water main related permit, with fees – if any – to be paid by the Village.



This proposal does not include design work necessitated by unforeseen conditions or extraordinary utility conflicts. Any additional services requested by the Village, or due to unforeseen conditions, that would result in a change of Scope will not commence unless given prior authorization.

These services will commence immediately upon receipt from the Village of the Notice to Proceed and will be completed in conjunction with the IDOT project schedule as applicable. If you have any questions regarding this proposal, please contact the undersigned. Thank you for the opportunity to be of service.

Very truly yours,
McDONOUGH ASSOCIATES INC.

Michael P. Hannemann, P.E.
Sr. Vice President

Encls: Scope of Services
VOP – Improvement limit sketch

cc: F. Nathani, MAI
A. Swanson, MAI
S. Ravanese, MAI
T. Werner, MAI
File

Approved & Accepted by
Village of Orland Park

Paul G. Grimes, Village Manager

11/10/12
Date

PROPOSED SCOPE OF SERVICES AND FEE
Village of Orland Park, IL
Water Main – 143rd Street from Wolf Road to Will-Cook Road

**Wolf Road to Will-Cook Road 8" water main design – To be included as part of the IDOT
Road Improvement Contract - includes Geotechnical support recommendations**

<u>TASK</u>	<u>TASK DESCRIPTION</u>	<u>HOURS</u>
1	Pre-Design Phase Services	
	1.1 Project Kick-off Meeting	2
	1.2 Right-of-Way and Easement Information	2
	1.3 Review Existing Information and Documents	2
	1.4 Review & Coordinate Subsurface Utility Engineering Evaluation	4
	1.5 Jurisdiction Agency/Organization Coordination	20
	TOTAL	30
2	Design Phase Services	
	2.1 Preparation of Drawings	127
	2.2 Preparation of Technical Specifications	30
	2.3 Summary of Quantities	12
	2.4 In-house Quality Control Reviews	12
	2.5 Jurisdiction Agency Coordination and Permitting	16
	2.6 Meetings & Communications with Village	6
	2.7 Public Meeting	0
	TOTAL	203
	Total Labor Hours -	233

Summary of Costs

Total Labor Costs	\$126.00/hour	\$ 29,358.00
Other Direct Costs		
Travel		\$ 25.00
Inhouse Printing/Copying		\$ 25.00
Outside Printing/Copying/Scanning		\$ 100.00
Geotechnical - pipe support design recommendations - Wang		\$ 10,797.55
	Total Direct Costs -	\$ 10,947.55
 Total Lump Sum Cost		 \$ 40,305.55

June 28, 2011

Mr. Timothy Werner, P.E.
McDonough Associates, Inc.
16634 South 107th Court
Orland Park, IL 60467

Re: Proposal – Geotechnical Engineering Services
143rd Street Water Main Support
Orland Park, Illinois
WEI No.: P110627

Dear Mr. Werner:

Wang Engineering, Inc. (Wang) is pleased to submit the following proposal for geotechnical services to support the design and construction of an 8-inch water main along 143rd Street in Orland Park, Illinois. Wang understands the segment of 143rd Street between Creek Crossing Drive and Compton Court overlies deposits of highly compressible soils uncovered by a previous roadway investigation performed Midwest Engineering Services (MES). The MES Soil Survey Report and dated April 19, 2005, indicates the highly compressible soil extends up to 28 feet below the existing ground elevation. Information from McDonough Associates, Inc. (MAI) indicates approximately 1000 feet of water main will pass through the compressible soil area along the south right-of-way line.

The following sections describe our proposed scope of geotechnical work, anticipated project schedule, and our cost estimate for these services.

SCOPE OF WORK

Based on the information provided by MAI, Wang understands the section of 143rd Street proposed for water main installation is approximately 1000 feet long. To support the water main against potential settlement within the compressible material, a deep foundation-type solution will likely be required. We propose to drill and sample 5 borings to a depth of 30 feet below the ground surface (150 total feet). The depth of each boring may be adjusted in the field depending on the actual subsurface soils condition encountered. Geotechnical engineering analysis and design procedures will be performed to assess the soil conditions, provide geotechnical parameters for a sound water main foundation, and other design and construction requirements.

To accomplish these objectives, Wang will complete the following tasks:

Geotechnical Drilling Services — Wang will provide equipment, labor, and associated materials to drill and sample 5 soil borings to 30 feet below the ground surface (bgs) to assess both the compressible organic soils as well as the foundation deposits beneath. The borings will be advanced with hollow stem augers to maintain an open borehole. Soil samples will be collected with split-barrel samplers in accordance with AASHTO T 206 "*Penetration Test and Split-Barrel Sampling of Soils.*" These soil samples will be returned to our laboratory for index testing.

Field Supervision — Prior to drilling, Wang will locate the boring locations in the field and clear utilities through the JULIE on-call system. The borings will be located along the south side of 143rd Street, spaced approximately 200 feet apart. A field engineer will monitor drilling activities, maintain daily field notes and soil boring logs, as well as receive, classify, and prepare soil samples for laboratory analysis. The field engineer will monitor the groundwater level during drilling and at the completion of drilling operations. Soil samples will be classified according to the IDH Textural Classification System.

As-drilled boring locations will be surveyed by Wang using a mapping grade Trimble GeoXH handheld GPS unit; the accuracy of the GPS unit is sub-foot in the horizontal direction.

Laboratory Testing — Upon completion of the drilling phase, all soil samples will be transported to our in-house laboratory. The general soil testing program will include natural moisture content on all samples.

Engineering Analysis and Recommendations — A geotechnical design report will be prepared and will include a detailed description of the project, field and laboratory testing results and procedures, a characterization of the soil and groundwater conditions, and recommendations for the design and construction of the water main support. Soil boring logs will be provided that will include soil descriptions, SPT penetration test results, field unconfined compressive strength testing results, moisture contents, and groundwater levels.

SCHEDULING

Wang will start the project expeditiously upon authorization to proceed. We anticipate that boring layout and utility clearance will require approximately 3 to 4 days of coordination. The drilling and sampling will require 2 days to complete. The laboratory testing program will be completed shortly after the completion of drilling and at that time the date for submittal of the geotechnical report will be coordinated with McDonough.

COST ESTIMATE

Wang proposes to provide the above tasks on time and material basis at hourly rates and direct cost shown on the attached cost estimate. This cost estimate was prepared assuming the following conditions:

- Drilling unit costs are considered prevailing rate under the Prevailing Wage Act (820 ILCS 130/0.01);
- The boring locations will require an ATV-mounted drilling rig to access locations off the roadway;
- No hazardous materials are encountered;
- No permits are required to work along 143rd Street.

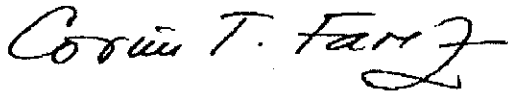
INSURANCE

Attached is a sample of our Certificate of Insurance. Additional insurance beyond those limits is not included in our cost estimate and will be considered a reimbursement item.

Wang Engineering, Inc. appreciates the opportunity to present this proposal and we look forward to working with McDonough Associates, Inc. and the Village of Orland Park on this project. If you have questions, or if you require additional information, please contact us at (630) 953-9928.

Sincerely,

Wang Engineering, Inc.



Corina T. Farez, P.E., P.G.
Vice President



Mickey Snider, P.E.
Senior Geotechnical Engineer

**COST ESTIMATE FOR GEOTECHNICAL SERVICES
143rd STREET WATER MAIN SUPPORT
ORLAND PARK, ILLINOIS
McDONOUGH ASSOCIATES, INC.**

Wang No.: P110627
Date: 06/27/11

FIELD INVESTIGATION

Task Description	Units	Unit Price	Extended Cost
Mobilization (Truck Mounted Drill Rig)	1 Each	\$1,100.00 /Each	\$1,100.00
ATV Mounted Drill Rig Daily Charge	1 Each	\$275.00 /Each	\$275.00
Drilling Crew Daily Travel & Support Vehicle	2 Days	\$145.00 /Day	\$290.00
Stand-By/Hourly Rates - Drill Mounted on Truck (Two-Man Crew & Equipment)	0 Hrs.	\$300.00 /Hour	\$0.00
<u>Drilling and Sampling</u>			
<u>Structure Borings</u>			
<i>Five proposed soil borings to 30 feet bgs</i>			
<i>Drilling including split spoon sampling at 2.5' sample interval to 30'</i>			
<i>(SPT, Penetrometer, Rimac, Visual Classification Included)</i>			
Between 0 and 75 Feet			
Normal Working Hours	150 Feet	\$25.00 /Foot	\$3,750.00
Restricted Hours (6 Hrs)	0 Feet	\$32.00 /Foot	
Night Work	0 Feet	\$30.00 /Foot	
<u>Borehole Abandonment and Surface Restoration</u>			
Backfilling Borehole			
Normal Working Hours	75 Feet	\$8.00 /Foot	\$600.00
Restricted Hours (6 Hrs)	0 Feet	\$9.00 /Foot	
Night Work	0 Feet	\$8.50 /Foot	
Total Cost for Drilling and Sampling			\$6,015.00



LABORATORY TESTING

AASHTO ASTM Task Description	Units	Unit Price	Extended Cost
<u>Soil Index Tests</u>			
T265 D2216 Water Content	60 Tests	\$6.50 /test	\$390.00
<u>Particle Size Distribution</u>			
T88 D422 Combined Sieve and Hydrometer	0 Tests	\$108.00 /test	\$0.00
<u>Atterberg Limits</u>			
T89, T90 D4318 Liquid and Plastic Limits	0 Tests	\$67.00 /test	\$0.00
Total Cost for Laboratory Testing			\$390.00

OTHER PROJECT RELATED DIRECT EXPENSES

Item Description	Units	Unit Price	Extended Cost
<u>Field Vehicle</u>			
Field Vehicle Mileage (>100 Miles per Day)	0 Miles	\$0.50 /Mile	\$0.00
Field Vehicle Daily (<100 Miles per Day)	3 Days	\$45.00 /Day	\$135.00
			\$135.00

**COST ESTIMATE FOR GEOTECHNICAL SERVICES
143rd STREET WATER MAIN SUPPORT
ORLAND PARK, ILLINOIS
McDONOUGH ASSOCIATES, INC.**

ENGINEERING AND REPORTING

Item Description	Units	Unit Price	Extended Cost
Field Activities			
Project Engineer	0 Hrs.	\$73.39 /Hour	\$0.00
Field Engineer	0 Hrs.	\$73.39 /Hour	\$0.00
Field Inspector	20 Hrs.	\$53.78 /Hour	\$1,075.50
Senior Field Inspector	0 Hrs.	\$75.50 /Hour	\$0.00
Data Analyses & Engineering			
Senior Engineer	2 Hrs.	\$114.73 /Hour	\$229.46
Project Engineer	6 Hrs.	\$73.39 /Hour	\$440.34
Staff Engineer	6 Hrs.	\$73.39 /Hour	\$440.34
Laboratory Technician	0 Hrs.	\$41.57 /Hour	\$0.00
Report Preparation			
Senior Engineer	6 Hrs.	\$114.73 /Hour	\$688.39
Project Engineer	8 Hrs.	\$73.39 /Hour	\$587.12
Staff Engineer	4 Hrs.	\$73.39 /Hour	\$293.56
Project Management			
Principal in Charge	0.5 Hrs.	\$143.98 /Hour	\$71.99
Project Manager	3 Hrs.	\$114.73 /Hour	\$344.19
Project Administrative Assistant	0.5 Hrs.	\$53.13 /Hour	\$26.56
QC/QA Review			
QC/QA Reviewer	1 Hrs.	\$60.10 /Hour	\$60.10
Total Cost for Engineering and Reporting			\$4,257.55

SUMMARY	
Drilling and Sampling	\$6,015.00
Laboratory Testing	\$390.00
Field Vehicles	\$135.00
Engineering and Reporting	\$4,257.55
TOTAL	\$10,797.55

ACORD™ CERTIFICATE OF LIABILITY INSURANCE

DATE (MM/DD/YYYY)

6/21/2010

PRODUCER
 DS&P Insurance Services Inc
 1530 E Dundee Rd., Suite 200
 Palatine IL 60074
 (847) 934-6100 (847) 934-6186

THIS CERTIFICATE IS ISSUED AS A MATTER OF INFORMATION ONLY AND CONFERS NO RIGHTS UPON THE CERTIFICATE HOLDER. THIS CERTIFICATE DOES NOT AMEND, EXTEND OR ALTER THE COVERAGE AFFORDED BY THE POLICIES BELOW.

INSURERS AFFORDING COVERAGE

NAIC #

INSURED
 Wang Engineering, Inc.
 1145 N. Main Street
 Lombard IL 60148

INSURER A: **ACUITY A Mutual Insurance Co.**

14184

INSURER B: **Steadfast Insurance Company**

26387

INSURER C:

INSURER D:

INSURER E:

COVERAGES

THE POLICIES OF INSURANCE LISTED BELOW HAVE BEEN ISSUED TO THE INSURED NAMED ABOVE FOR THE POLICY PERIOD INDICATED. NOTWITHSTANDING ANY REQUIREMENT, TERM OR CONDITION OF ANY CONTRACT OR OTHER DOCUMENT WITH RESPECT TO WHICH THIS CERTIFICATE MAY BE ISSUED OR MAY PERTAIN, THE INSURANCE AFFORDED BY THE POLICIES DESCRIBED HEREIN IS SUBJECT TO ALL THE TERMS, EXCLUSIONS AND CONDITIONS OF SUCH POLICIES. AGGREGATE LIMITS SHOWN MAY HAVE BEEN REDUCED BY PAID CLAIMS.

INSR ADD'L LTR INSRD	TYPE OF INSURANCE	POLICY NUMBER	POLICY EFFECTIVE DATE (MM/DD/YY)	POLICY EXPIRATION DATE (MM/DD/YY)	LIMITS	
B	GENERAL LIABILITY	GLO587379807	6/30/2010	6/30/2011	EACH OCCURRENCE	\$ 1,000,000
	<input checked="" type="checkbox"/> COMMERCIAL GENERAL LIABILITY				DAMAGE TO RENTED PREMISES (Ea occurrence)	\$ 100,000
	<input type="checkbox"/> CLAIMS MADE <input checked="" type="checkbox"/> OCCUR				MED EXP (Any one person)	\$ 5,000
	<input checked="" type="checkbox"/> No Railroad				PERSONAL & ADV INJURY	\$ 1,000,000
	<input checked="" type="checkbox"/> Exclusion				GENERAL AGGREGATE	\$ 2,000,000
	GEN'L AGGREGATE LIMIT APPLIES PER:				PRODUCTS - COM/POP AGG	\$ Excluded
	<input checked="" type="checkbox"/> POLICY <input type="checkbox"/> PRO-JECT <input type="checkbox"/> LOC					
A	AUTOMOBILE LIABILITY	K26141	6/30/2010	6/30/2011	COMBINED SINGLE LIMIT (Ea accident)	\$ 1,000,000
	<input checked="" type="checkbox"/> ANY AUTO				BODILY INJURY (Per person)	\$
	<input type="checkbox"/> ALL OWNED AUTOS				BODILY INJURY (Per accident)	\$
	<input type="checkbox"/> SCHEDULED AUTOS				PROPERTY DAMAGE (Per accident)	\$
	<input checked="" type="checkbox"/> HIRED AUTOS					
	<input checked="" type="checkbox"/> NON-OWNED AUTOS					
	GARAGE LIABILITY				AUTO ONLY - EA ACCIDENT	\$
	<input type="checkbox"/> ANY AUTO				OTHER THAN EA ACC	\$
					AUTO ONLY: AGG	\$
	EXCESS/UMBRELLA LIABILITY				EACH OCCURRENCE	\$
	<input type="checkbox"/> OCCUR <input type="checkbox"/> CLAIMS MADE				AGGREGATE	\$
	<input type="checkbox"/> DEDUCTIBLE					\$
	<input type="checkbox"/> RETENTION \$					\$
A	WORKERS COMPENSATION AND EMPLOYERS' LIABILITY ANY PROPRIETOR/PARTNER/EXECUTIVE OFFICER/MEMBER EXCLUDED? If yes, describe under SPECIAL PROVISIONS below	K26141	6/30/2010	6/30/2011	<input checked="" type="checkbox"/> WC STATU-TORY LIMITS	OTH-ER
					E.L. EACH ACCIDENT	\$ 1,000,000
					E.L. DISEASE - EA EMPLOYEE	\$ 1,000,000
					E.L. DISEASE - POLICY LIMIT	\$ 1,000,000
B	PROF/POLL LIABILITY	PEC587379407	6/30/2010	6/30/2011	\$2,000,000 Each Claim \$2,000,000 TTL for all Claims	

DESCRIPTION OF OPERATIONS / LOCATIONS / VEHICLES / EXCLUSIONS ADDED BY ENDORSEMENT / SPECIAL PROVISIONS

SAMPLE CERTIFICATE OF INSURANCE


CERTIFICATE HOLDER

SAMPLE CERTIFICATE OF INSURANCE

CANCELLATION

SHOULD ANY OF THE ABOVE DESCRIBED POLICIES BE CANCELLED BEFORE THE EXPIRATION DATE THEREOF, THE ISSUING INSURER WILL ENDEAVOR TO MAIL 30 DAYS WRITTEN NOTICE TO THE CERTIFICATE HOLDER NAMED TO THE LEFT, BUT FAILURE TO DO SO SHALL IMPOSE NO OBLIGATION OR LIABILITY OF ANY KIND UPON THE INSURER, ITS AGENTS OR REPRESENTATIVES.

AUTHORIZED REPRESENTATIVE



IMPORTANT

If the certificate holder is an **ADDITIONAL INSURED**, the policy(ies) must be endorsed. A statement on this certificate does not confer rights to the certificate holder in lieu of such endorsement(s).

If **SUBROGATION IS WAIVED**, subject to the terms and conditions of the policy, certain policies may require an endorsement. A statement on this certificate does not confer rights to the certificate holder in lieu of such endorsement(s).

DISCLAIMER

The Certificate of Insurance on the reverse side of this form does not constitute a contract between the issuing insurer(s), authorized representative or producer, and the certificate holder, nor does it affirmatively or negatively amend, extend or alter the coverage afforded by the policies listed thereon.