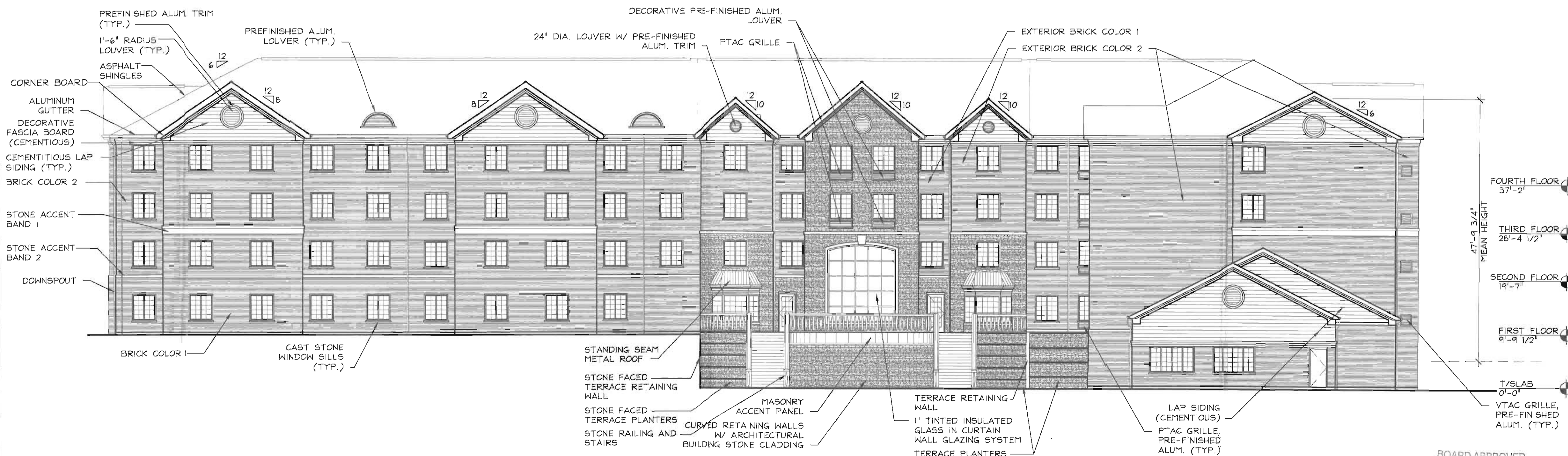


NORTH ELEVATION
 A4.00 3/32" = 1'-0"



SOUTH ELEVATION
 A4.00 3/32" = 1'-0"

MATERIAL LEGEND	
MATERIAL	REMARKS
BRICK COLOR 1	HEBRON BRICK COMPANY - MAPLE
BRICK COLOR 2	HEBRON BRICK COMPANY - GOLDENROD
ARCHITECTURAL BUILDING STONE	ARRISCRIFT INTERNATIONAL - SANDLEWOOD
CUT STONE	LIGHT GRAY
STONE ACCENT BAND 1	LIGHT GRAY
STONE ACCENT BAND 2	LIGHT GRAY
ALUMINUM TRIM	MILL FINISH ALUMINUM
ALUMINUM GUTTER/DOWNSPOUT	PAINT TO MATCH BRICK
ALUMINUM PRE-FINISHED GRILLE	MILL FINISH ALUMINUM
8" CEMENTITIOUS LAP SIDING	JAMES HARDI INDUSTRIES - SAILCLOTH
1" THK. CEMENTITIOUS TRIM	JAMES HARDI INDUSTRIES - SAILCLOTH
STANDING SEAM PRE-FINISHED ALUMINUM ROOF	ATAS INTERNATIONAL 1-3/4" SEAMS, 12" O.C.
ASPHALT FIBERGLASS SHINGLES	CERTANTEED COMPANY CHARCOAL

BOARD APPROVED
 CASE NO. 2008-0184.2
 DATE 10-6-08
 W/CONDITIONS _____
 W/O CONDITIONS

archipian international, ltd.
 ARCHITECTURE · PLANNING · INTERIOR DESIGN
 955 north main grove rd. suite E
 schumberg, illinois 60173-4784
 (847) 619-9555 fax (847) 619-1440

STAYBRIDGE SUITES

SOUTHWEST HIGHWAY AND 131ST STREET
ORLAND PARK, ILLINOIS

REVISIONS:	F 06-25-08
A 09-13-07	G 07-10-08
B 04-19-07	H 08-22-08
C 01-04-08	J 04-04-08
D 02-12-08	K 08-15-08
E 06-16-08	

ISSUED FOR REVIEW	NOT FOR CONSTRUCTION OR PERMITTING
PROJECT NUMBER:	06069
SHEET NUMBER:	A4.00