



ORLAND PARK LANDSCAPE ARCHITECT SERVICES

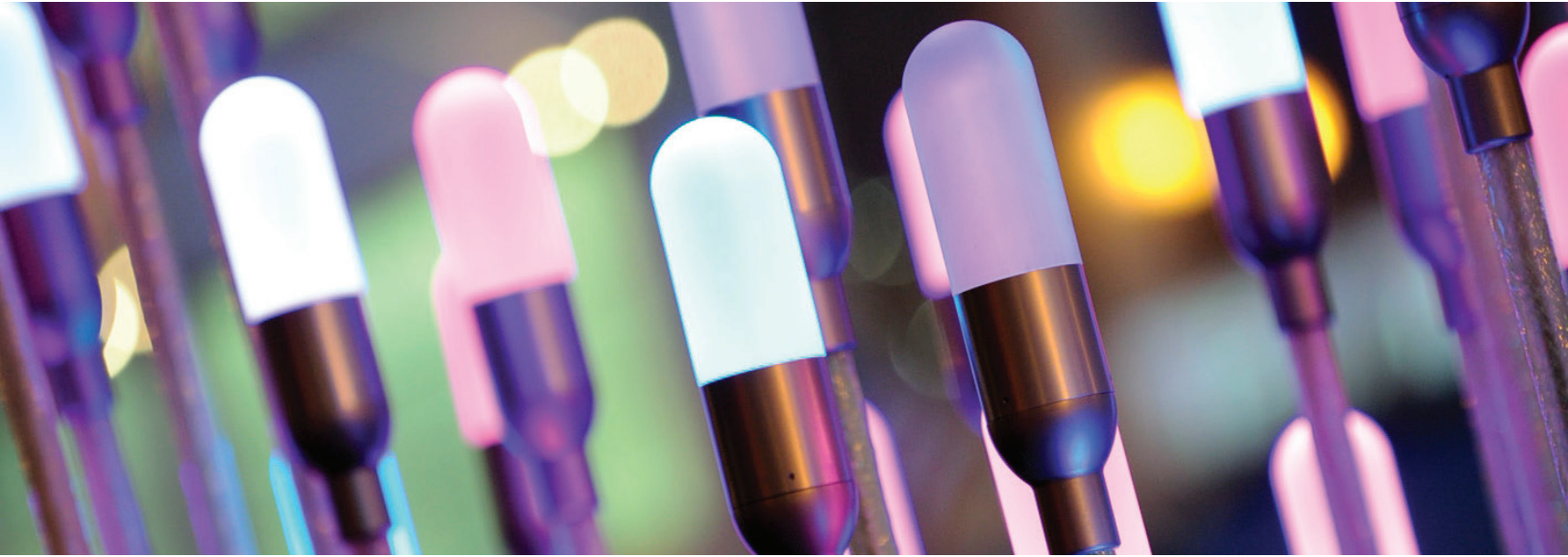
VILLAGE OF ORLAND PARK
REQUEST FOR PROPOSALS #21-055
LANDSCAPE ARCHITECT SERVICES



site // www.site-design.com

site design group, ltd.
888 s michigan avenue, unit ph 1
chicago, illinois 60605

TABLE OF CONTENTS



State Street Lightscape

| | |
|--|----|
| 1/ Firm Overview & Operating History..... | 4 |
| 2/ Experience..... | 7 |
| 3/ Qualifications: Licenses..... | 20 |
| 4/ Qualifications: Resumes of key personnel..... | 26 |
| 5/ Proposed Hourly Rates..... | 34 |
| 6/ Required Forms..... | 35 |



October 20, 2021

Mr. Patrick R. O'Sullivan, Village Clerk
Village of Orland Park
Office of the Village Clerk
2nd Floor, 14700 S. Ravinia Ave.
Orland Park, IL 60462

Re: Request for Proposals #21-055
Landscape Architect Services

Dear Mr. O'Sullivan,

On behalf of *site design group, ltd. (site)*, I am writing to express our interest in providing comprehensive, functional, and creative Landscape Architecture services for Village of Orland Park in response to the Request for Proposals #21-055 for Landscape Architect Services.

site is a nationally award-winning landscape architecture, urban design, and architecture firm based nearby in Chicago. We are known in Illinois and the Midwest for our expertise as innovators and creative thinkers in Landscape Architecture. *site* is certified as a Minority Business Enterprise (MBE) and Disadvantaged Business Enterprise (DBE). Throughout our 31 year tenure, we have worked extensively with municipalities providing a wide range of landscape consulting services. Our attention to the importance of creative, contextually-based design, durability and maintainability, functionality, user-experience, and factors such as seasonal interest, sustainability, and diversity of use has led to numerous successful projects.

Since 2008, we have worked alongside Village of Tinley Park staff, providing a wide range of landscape consulting services. Our work has ranged from building and managing municipal programs and contracts, to implementing Village beautification initiatives, to planning, design and construction administration services. Throughout our tenure in Tinley Park, our staff has evolved in order to meet the expertise and personnel needs of the Village, providing regular office hours and on-site availability as needed in a "staff loan" capacity. We have provided landscape plan review, landscape inspection services, landscape code compliance review, and conceptual level planning services for more than 97 projects over 13 years of services. We believe our expertise in municipal consulting services, alongside our staff's regular presence nearby in Tinley Park, provide an excellent opportunity to serve the Village of Orland Park for the Landscape Architect Services contract.

We have selected a diverse team of licensed and certified key personnel with practical knowledge and past experience working with municipalities throughout Illinois. These key team members will serve as the primary personnel for the contract; however, we will draw from our entire 37 interdisciplinary team members as-needed on a project by project basis. Our team comprises architects, landscape architects, planners, arborists, horticulturalists, and designers with diverse backgrounds and experience.

We are thrilled for the opportunity to submit our qualifications to the Village of Orland Park. Should you have any questions or require additional information, please do not hesitate to contact me.

Sincerely,

Brad McCauley, ASLA, PLA, CDT
Managing Principal
(815) 970-8697 / bcmccauley@site-design.com

site design group, ltd.
888 south michigan avenue #ph1
chicago, illinois 60605
www.site-design.com

1/ FIRM OVERVIEW & OPERATING HISTORY



Comer Children's Play Garden

WE CREATE SPACES THAT CHANGE PEOPLE.

site design group, ltd. (site)

Headquarters: Chicago, Illinois
Web: site-design.com

Certifications:

- + Licensed Architect in the State of Illinois
- + Minority Business Enterprise: National Minority Supplier Development Council, City of Chicago
- + Disadvantaged Business Enterprise: Illinois Dept. of Transportation
- + System for Award Management (SAM) Small Business Enterprise and Small Disadvantaged Business

Founded in 1990, *site design group, ltd. (site)* is a nationally award-winning landscape architecture, urban design, and architecture firm based in Chicago, Illinois. A corporation licensed in the State of Illinois, the firm is led by four principals, Ernest Wong, Robert Sit, Bradley McCauley, and Hana Ishikawa. As landscape architects, urban designers, planners, arborists, architects, and creative thinkers, we are a staff of 37 diverse and innovative professionals. We are enlivened by our surroundings and strive to produce creative spaces that inspire, restore, and bring communities together.

site is often engaged to collaborate and coordinate efforts with architects, engineers, and other design professionals. Effective communication with the design team and client ensures successful coordination of projects from concept through construction.

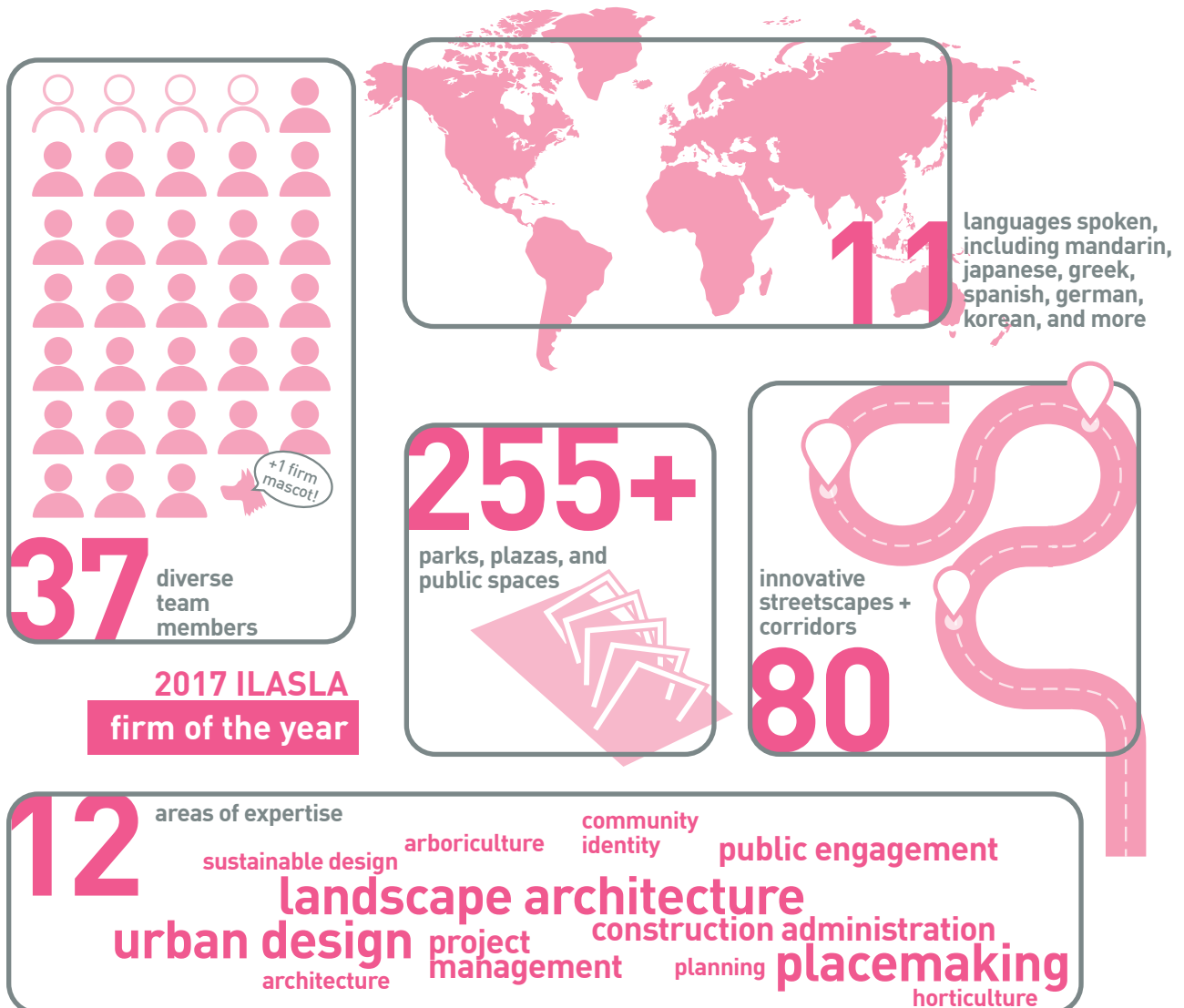
As designers, creative thinkers, and engaged citizens, we understand the value of exterior environments that create a sense of place. Successful placemaking leads to the long-term care and use of these spaces by the public. At *site* this is our goal in all we do: to create spaces that are valued and sustained by the communities they reside within in order to maintain long-term relevance and use.

Using functional systems coupled with "out of the box" strategies, we work diligently with our clients to create spaces that excite and engage users, improve the pedestrian experience, strengthen community ties, conserve and enhance the site's unique natural features, and push the boundaries of innovation and resiliency.

Throughout our 31 years in business, we have made our name for our leadership and innovation in landscape architecture and urban design, commitment to design excellence, and community-based approach. Each project brings a measure of **social responsibility, placemaking, and land stewardship.**

We place time and care towards detailing beautiful outdoor spaces and discovering dynamic public experiences within complex urban fabrics. With any given project, we utilize a design process that emphasizes effective communication, attention to detail, understanding of human scale, and evaluation of the past, current, and future needs of a given community to ensure design excellence.

Award-winning public spaces designed by *site* have successfully redefined the shape and character of individual communities. Chicago's Mary Bartelme Park and Ping Tom Memorial Park have raised the bar for urban park design and are now major regional destinations. These places are connective links into communities and continue to have a positive physical, social, and economic impact on the surrounding neighborhoods.



**2017 ILASLA
firm of the year**

LANDSCAPE CONSULTING SERVICES

In addition to our landscape architecture portfolio, we have a long history of ensuring code compliance through landscape plan reviews, code reviews, wetland review, and site inspections. Our compliance review experience spans residential developments, streetscapes, mixed-use developments, parks, open spaces, stormwater basins, ecological restoration, and naturalized plantings. Other key consulting services include:

Comprehensive landscape consulting services

Writing and interpreting landscape ordinances, codes and policies
Grant writing and grant project management
Cost estimating, budgeting and capital needs assessments

Building and managing municipal programs and contracts

Urban and community forestry and horticulture
Landscape maintenance and plant health care

Planning, design and construction administration

Conceptual planning and visioning
Natural areas, wetlands, and ecological restoration
Detention basins, bioswales, rain gardens, and green infrastructure
Parks, plazas and public spaces
Streetscapes and planted medians
Master plans
Signage and wayfinding
Irrigation systems

RELEVANT FIRM INFORMATION

Legal name: site design group, ltd.

Headquarters: 888 South Michigan Avenue #1000
Chicago, IL 60605

Legal form: Corporation

Founded: 1990 (31 years in business)

Partners: Ernest C. Wong and Robert K. Sit

Principals: Ernest C. Wong, Robert K. Sit, Bradley McCauley, Hana Ishikawa

Staff: 37 professionals

Firm contact: Ernest C. Wong, Principal
ecwong@site-design.com
(312) 427-7240 x102

2/ EXPERIENCE



Tinley Park Public Library

Throughout our tenure, *site* has provided design, consulting, planning, and construction services for municipal and civic clients throughout Chicagoland and the Midwest. Our award-winning project experience spans master planning and feasibility projects, small-scale improvements, community parks, plazas, streetscapes, plan review and project auditing, urban forestry, landscape maintenance, wetland review, sustainable consulting, and grant management.

Our clients include numerous public agencies, including the Village of Tinley Park, City of Champaign, City of Milwaukee, Village of Fox Lake, Village of Schaumburg, Forest Preserves of Cook County, Chicago Park District, Chicago Department of Transportation, Chicago Public Schools, Chicago Department of Planning and Development, Illinois Department of Transportation, and the Public Building Commission of Chicago.

REFERENCES

Village of Tinley Park

Kelly Mulqueeny, Streets Superintendent
16250 S Oak Park Avenue, Tinley Park, Illinois 60477
708-444-5520

Tinley Park Public Library

Zach Musil, Library Director
7851 Timber Drive, Tinley Park, Illinois 60477
708-444-5520

The Field Museum of Natural History

Ernst Pierre-Toussaint, Director of Facility Planning & Operations
1400 S Lake Shore Dr, Chicago, IL 60605
708-444-5520

Village of Fox Lake

Anne Marrin, Village Administrator
66 Thillen Drive, Fox Lake, Illinois 60020
(847) 587-3942



Through this contract, we have established a strong working relationship with the Village of Tinley Park exemplified through collaborative projects related to Village owned and maintained properties, resident issues and concerns, private property and development review issues, and all of the associated Village ordinances, codes, and policies.

Client/Owner
Village of Tinley Park

Description
Since 2008, *site* has worked alongside Village of Tinley Park staff as the landscape architect on retainer, providing a wide range of landscape consulting services. Tasks include plan review and project auditing, urban forestry consulting, conceptual planning, design services, construction administration, landscape maintenance planning and oversight, sustainable consulting, and grant management. Notable projects include the 80th Avenue Metra Station, General Patrick E. Rea Veterans Plaza, Harlem Avenue Medians, Pond G Detention Basin, Freedom Pond, the Legacy Plan for Downtown Tinley Park, and several projects with the Tinley Park Library. Natural areas consulting services include ecological restoration design and construction projects as well as oversight of the naturalized stormwater areas maintenance contractor. Urban forestry consulting services include management and oversight of the parkway tree planting program, the ash tree treatment program and a large scale tree removal contracts.



Completion
Ongoing



Each year, the library performs a patron satisfaction survey, and the grounds and outdoor amenities have been ranked increasingly higher since we began work.

Client/Owner

Tinley Park Public Library

Description

Since 2011, *site* has been working with the Tinley Park Public Library to design and manage a wide variety of site improvements across its 12 acre grounds. Individual projects have included entrance plaza, fountain, and planting enhancements, a pavilion, boardwalks and pathways, and the restoration and management of the natural area. The restoration project included invasive species removal and control, prescribed burns, and new seeded native plantings for upland low, upland tall grass, mesic prairie, and wetland planting zones. *site* continues to work with the library to perform annual landscape enhancement projects and support services to continually improve the grounds, and to oversee all landscape maintenance contractors including landscape beds, naturalized and aquatic areas maintenance.



Completion

Ongoing Design and Maintenance Support





**Natural Area
Restoration
Progression**

1. Pre-restoration,
invaded by Buckthorn



2. Mid-restoration,
Buckthorn clearing



3. Post-restoration,
Native Plantings



tree inventory map courtesy of Davey Resource Group

This project was the largest single phase ash removal project implemented in the state of Illinois.

Client/Owner

The Village of Tinley Park

Description

Prior to the invasive beetle known as Emerald Ash Borer (EAB), the Village of Tinley Park community forest was made up of over 40% ash trees in the public right-of-way. Due to the devastating impacts of EAB and the rapid rate of decline they bring to the trees they infest, the vast majority of these ash trees needed to be removed from the public ROW. *site* organized and managed the contract with Homer Tree Care to implement this massive tree removal project, encompassing more than 10,000 trees.



Completion

2015

Budget

\$1,270,000

Contact

Kelly Mulqueeny, Street Superintendent,
Village of Tinley Park
(708) 444-5500 / kmulqueeny@tinleypark.org





This program has planted over 40 different types of trees.

image courtesy of Gary Middendorf, Daily Southtown

Client/Owner

The Village of Tinley Park

Description

In order to replace all of the ash trees lost to the Emerald Ash Borer (EAB), the Village of Tinley Park pursued an aggressive replanting plan to re-plant the 10,000 trees lost over a three year time frame. Serving as the Landscape Architect on retainer, *site* organized and managed this contract throughout the three year planting period.



Completion

Ongoing



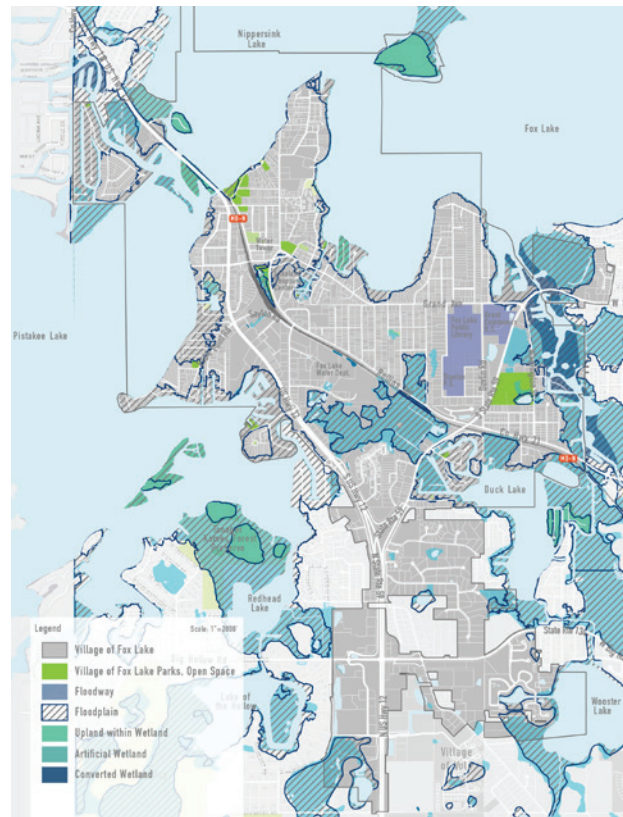


Working collaboratively with the Village steering committee, staff, stakeholders, and community members, the following goals were identified to guide the Master Plan: Provide regional open space destinations; Spur business and economic development; Increase property values; Provide programs for an active lifestyle for residents; Provide spaces for community gathering; Foster community pride; Provide spaces for relaxation; and, Establish a focus on conservation and environmental sustainability.

Client/Owner
Village of Fox Lake

Description
In 2018, *site* began working with the Village of Fox Lake to develop a visionary Parks and Recreation Master Plan for the Village’s 179 acres of open space. The Master Plan aims to create a blueprint for the Village to improve and expand upon its existing assets and services in a community-supported and fiscally-responsible way. As a part of the data gathering process, the planning team met with key stakeholders from 23 diverse interest groups. The plan included a thorough analysis of the overall system in order to make recommendations for community-wide and park-specific improvements. The plan prioritized development through an implementable action plan that identifies high, medium, and low priorities, and outlined site-specific capital project improvements at priority parks identified based on usage and quality.

Completion
2019





The Field Museum of Natural History is a cultural touchstone in the City of Chicago, and one of the largest natural history museums in the world. The Field Museum of Natural History Landscape Masterplan endeavors to expand the scope of the Field Museum's exhibits, programs, and mission by fostering growing community awareness of ecological processes, sustainable practices, and landscape restoration.

Document link:
tinyurl.com/fieldmuseummasterplan

Client/Owner

The Field Museum of Natural History

Description

The historic Field Museum of Natural History sought to further its goals for an energy efficient, sustainable facility maintenance program by creating a landscape that requires limited resources to maintain and promotes biodiversity and native plant systems within the museum campus. Working together with the museum, *site* completed a Landscape Masterplan that extends the mission of the museum to the outdoors through site improvements that promote pedestrian circulation to building entries, better facilitate gathering and special events, and serve as a stronger component of local ecological networks. The implementation of the Masterplan is currently underway. The south terraces were completed in 2016, the north terraces in 2018, and the west parking lot is currently under construction.



Completion

Ongoing



One of the early project goals was to leave as small a footprint and contribute as few carbon emissions as possible through two primary means; by keeping all existing materials on site, and managing all rainfall through natural systems. Angular metal catwalks, recycled concrete steps, and zigzagging paths traverse the site, sharply contrasting the surrounding prairie grasses, and serving to celebrate the site's industrial past.

Client/Owner

Chicago Park District, City of Chicago

Description

Henry Palmisano Park, located in the historic Bridgeport neighborhood on the South Side of Chicago, is a 27-acre ecological gem built on a site rich with historic significance. The park is a rare amenity to this quiet community, with a history that includes serving as one of the city's most important quarries, a forgotten dumping ground of construction waste, and finally being transformed into a 27-acre urban oasis that boasts high-quality native prairie and wetland re-creations embedded in a dense urban environment. Praised for its dynamic and poetic juxtaposition of the natural world and the industrial infrastructure that once defined Chicago, this much-loved park has set the bar for a new kind of urban park, one that can be made of mostly what it used to be, and embraces surreal natural beauty, diversity, and the celebration of a site's unique past.



Completion

2010



The park, which spans an entire city block, melds the site's industrial history with sustainable and innovative design features, becoming a popular urban refuge for the neighborhood.

Client/Owner

Chicago Park District

Description

Occupying the site of a former infirmary, this 2.4-acre urban park is an amenity to a growing residential neighborhood that was previously underserved by green space. Crisscrossing paths creating distinct, programmed zones that were selected by an extensive community process. Unique park features include a series of stainless steel gateways that mist when activated; a sunken dog park with an oversized, continuously filling dog bowl; native planting beds defined by corten steel walls; and architectural terracotta artifacts salvaged from the original infirmary building embedded within linear seatwalls. A large playground is almost fully accessible by ramps, and creates opportunities for inventive, non-linear play.



Completion

2010



Sensors have been installed in the Argyle Shared Street's infiltration planters as part of the City Digital Pilot Project to monitor green infrastructure performance.

Client/Owner

Burns and McDonnell / Chicago Department of Transportation

Description

As a subconsultant to Burns and McDonnell, *site* provided landscape architecture and urban design services for the streetscape design of Argyle Street between North Broadway and North Sheridan Road in the Uptown community. Argyle is Chicago's first street designed based on 'shared street' design guidelines, creating a plaza-like feel by raising the street and eliminating curbs. The innovative design creates flexibility in its use and prioritizes pedestrians and bicyclists. The design of the streetscape features permeable unit pavers, infiltration planters, large pedestrian areas that allow for sidewalk cafes, planters, and community identifiers.

Completion

2016





Through a collaborative process with the client and design team, the following project goals were established: (1) Become an economic development catalyst for the 90NDW development; (2) Provide year-round recreational opportunities; (3) Encourage visitors to linger through active and passive recreation; (4) Promote sustainability through stormwater features, materials, and native landscapes; and, (5) Create a unique urban park experience.

Client/Owner

Village of Schaumburg

Description

In January 2020, *site* began working with the Village of Schaumburg on a visionary design for the proposed 12-acre 90 North District West Park, which will become the centerpiece of the 90 North District West development (90NDW), located on the former Motorola Campus in Schaumburg, Illinois. The site holds tremendous opportunity as a unique destination, a connection to nearby amenities, and a valued gathering and recreational place for nearby residents, employees, and visitors. The key components of the proposed design include park entrance gateways, criss-crossing pathways that traverse the park, a water feature sculpture, social seating areas, flexible programming, a sculpture garden, a dog park, and a performance stage that can be used as an ice rink in the winter. The park is proposed to be constructed in a series of seven phases.

Completion

Ongoing





The Nature Play Garden and Treehouse design at Dan Ryan Woods promotes inventive play with natural materials while accommodating children of all ages and abilities. Play features involve a range of gross motor skills, fine motor skills, social engagement, problem-solving skills, and intellectual engagement.

Client/Owner

Forest Preserves of Cook County

Description

Working with the Forest Preserves of Cook County, *site* built upon the 2013 master planning and site development for Dan Ryan Woods, a 257-acre preserve in Chicago’s Beverly neighborhood that is known for its popular sledding hill and numerous recreation fields. Phase I general site improvements included ADA accessible trails, signage and wayfinding, native planting, a natural amphitheater, and seating at the renovated Visitor Center. A second phase included a nature play garden and custom treehouse for a new kid-centric development adjacent to the Visitor Center. The design of the nature play garden includes custom wood play features, varying textures and materials, native plantings, and free-form play areas to promote creative play.



Completion

2019

3/ QUALIFICATIONS: LICENSES



Printers Row Park

site has assembled an exemplary team of ISA Certified Arborists, ISA Tree Risk Assessment Qualification Professionals, Landscape Architects, Architects, and Planners to participate in the Village of Orland Park Landscape Architecture Services. Professional licenses can be found in the following pages, and resumes for key personnel are located in section **4/ Resumes of Key Personnel**.

State of Illinois

Department of Financial and Professional Regulation Division of Professional Regulation

LICENSE NO.
157.000818

The person, firm, or corporation whose name appears on this certificate has complied with the provisions of the Illinois Statutes and/or rules and regulations and is hereby authorized to engage in the activity as indicated below:

EXPIRES:
08/31/2021

REGISTERED LANDSCAPE ARCHITECT



ERNEST C WONG
888 S MICHIGAN AVENUE UNIT PH1
CHICAGO, IL 60605



DEBORAH HAGAN
SECRETARY

CECILIA ABUNDIS
ACTING DIRECTOR

The official status of this license can be verified at www.idfpr.com

13887164

Reinstated
by Governor
Pritzker
August 2021

State of Illinois

Department of Financial and Professional Regulation Division of Professional Regulation

LICENSE NO.
001.010544

The person, firm, or corporation whose name appears on this certificate has complied with the provisions of the Illinois Statutes and/or rules and regulations and is hereby authorized to engage in the activity as indicated below:

EXPIRES:
11/30/2022

LICENSED ARCHITECT



ROBERT K SIT
888 S MICHIGAN AVENUE
UNIT PH1
CHICAGO, IL 60605



DEBORAH HAGAN
SECRETARY

CECILIA ABUNDIS
ACTING DIRECTOR

The official status of this license can be verified at www.idfpr.com

15148285

State of Illinois

Department of Financial and Professional Regulation Division of Professional Regulation

LICENSE NO.
001.025168

The person, firm, or corporation whose name appears on this certificate has complied with the provisions of the Illinois Statutes and/or rules and regulations and is hereby authorized to engage in the activity as indicated below:

EXPIRES:
11/30/2022

LICENSED ARCHITECT



HANA ISHIKAWA
1727 S INDIANA AVE APT 421
CHICAGO, IL 60616-1348



DEBORAH HAGAN
SECRETARY

CECILIA ABUNDIS
ACTING DIRECTOR

The official status of this license can be verified at www.idfpr.com

15640182

State of Illinois

Department of Financial and Professional Regulation Division of Professional Regulation

LICENSE NO.
157.001466

The person, firm, or corporation whose name appears on this certificate has complied with the provisions of the Illinois Statutes and/or rules and regulations and is hereby authorized to engage in the activity as indicated below:

EXPIRES:
08/31/2021

REGISTERED LANDSCAPE ARCHITECT



BRADLEY C MCCAULEY
888 S MICHIGAN AVENUE
UNIT PH1
CHICAGO, IL 60605



DEBORAH HAGAN
SECRETARY

CECILIA ABUNDIS
ACTING DIRECTOR

The official status of this license can be verified at www.idfpr.com

13887187

Reinstated
by Governor
Pritzker
August 2021



CLARB

COUNCIL OF LANDSCAPE ARCHITECTURAL
REGISTRATION BOARDS

This certifies that

Bradley C. McCauley

has met all the requirements for Council Certification and is therefore recommended to all Registration Authorities for registration or licensure as a Landscape Architect.

35412

Council Record Number:

July 7, 2017

Certification Date:

Christopher B. Hoffman

President

Allison Fleury

Secretary





The International Society of Arboriculture

Hereby Announces That

Mitchell Murdock

Has Earned the Credential

ISA Certified Arborist ®

By successfully meeting ISA Certified Arborist certification requirements through demonstrated attainment of relevant competencies as supported by the ISA Credentialing Council

Caitlyn Pollihan

Caitlyn Pollihan
CEO & Executive Director

22 October 2005

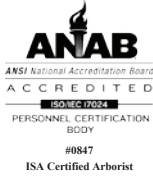
31 December 2023

NY-5236A

Issue Date

Expiration Date

Certification Number



The International Society of Arboriculture

Hereby Announces That

Mitchell Murdock

Has Earned the Credential

ISA Tree Risk Assessment Qualification®

By successfully meeting ISA Tree Risk Assessment Qualification certification requirements through demonstrated attainment of relevant competencies as supported by the ISA Credentialing Council

Caitlyn Pollihan

Caitlyn Pollihan
CEO & Executive Director

13 May 2021

13 May 2026

Issue Date

Expiration Date





Reinstated
by Governor
Pritzker
August 2021

This certificate hereby qualifies

Cassandra Rice, AICP

as a member with all the benefits of a Certified Planner and a commitment to the AICP Code of Ethics and Professional Conduct.

Certified Planner Number: 32830


Joel Albizo, FASAE, CAE
Chief Executive Director


Mitchell J. Silver, FAICP
President



**American Institute
of Certified Planners**

Creating Great Communities for All

4/ QUALIFICATIONS: RESUMES OF KEY PERSONNEL



The Park at Lakeshore East

RESUMÉ



MITCHELL MURDOCK ISA CERTIFIED ARBORIST
Project Manager & Wetland Specialist

BIO

Mitchell Murdock is a Project Manager, Natural Areas Specialist, and Certified Arborist at *site*. His specialties include municipal open space projects, urban forestry, wetlands, and ecological restoration. Since 2013, Mitch has served the Village of Tinley Park in a “staff loan” capacity, providing on-demand design, management, and oversight services for various Village departments. While working for large municipal park agencies in NYC and Chicago, Mitch fostered his passion for greening communities and developing landscapes that integrate the natural and built elements.

SELECTED WORK

Parks, Plazas, and Open Space

- Landscape Architect Retainer, Tinley Park, IL
- Tinley Park Public Library, Tinley Park, IL
- Landscape Ordinance, Tinley Park, IL
- Urban Forest Management, Tinley Park, IL
- Tree Inventory, Tinley Park, IL
- Natural Areas Maintenance, Tinley Park, IL
- Stormwater Detention Areas Maintenance, Tinley Park, IL
- Emerald Ash Borer Treatment, Tinley Park, IL
- Emerald Ash Borer Tree Removals, Tinley Park, IL
- Apple Pond Restoration, Tinley Park, IL
- Panduit Legacy Pond, Tinley Park, IL
- Fairfield Glen Restoration, Tinley Park, IL
- Midlothian Creek, Tinley Park, IL
- CNT FarmWorks Site Green Infrastructure, Chicago, IL
- CNT Logan Square Green Infrastructure, Chicago, IL

Streetscapes + Transit

- Harlem Avenue Median Replacements/Enhancements, Tinley Park, IL
- 183rd Street Medians, Tinley Park, IL
- 171st Street Medians, Tinley Park, IL
- LaGrange Road, Tinley Park, IL

REGISTRATION

International Society of Arboriculture Certified Arborist, #NY-5236A, since 2005
International Society of Arboriculture Tree Risk Assessment Qualification, since 2021

EDUCATION

Master of Science, Landscape Design
Columbia University, New York, NY
Bachelor of Science, Natural Resources
The Ohio State University, Columbus, OH

EMPLOYMENT HISTORY

2013—Present: *site*, Chicago, IL

RESUMÉ



ERNEST C. WONG PLA, FASLA, APA
Principal Landscape Architect

BIO

Ernest C. Wong, Founder and Principal of *site*, has been instrumental in the evolution of the firm as a multi-cultural cutting edge design entity and fostering the landscape architecture profession in the City of Chicago. In managing the firm for over 31 years, *site* has established a reputation for creative design solutions, and developing thoughtful, community-oriented urban spaces. A strong proponent of civic and community engagement, Mr. Wong sits on the board of numerous service organizations and professional juries including the Driehaus Award for Architectural Excellence in Community Design, Chinese American Service League, Near South Planning Board, and as the Chair of the Chicago Landmarks Commission. In addition, Mr. Wong is a frequent speaker at universities as well as design, business, and diversity conferences. This year, he was the keynote speaker for the Florida and Oregon ASLA Conferences and a juror for the inaugural AIA Roberta Feldman Socially Just Design Award.

PROFESSIONAL AFFILIATIONS

American Society of Landscape Architects, Fellow
Commission on Chicago Landmarks, Commissioner and Vice Chair
Chicago Department of Planning & Development, Design Excellence Committee
City Parks Alliance, Board
Landscape Architecture Foundation, Board of Directors
Chicago Botanic Garden, Board of Directors

SELECTED WORK

Ping Tom Memorial Park, Chicago, IL
Mary Bartelme Park, Chicago, IL
Henry C. Palmisano Park, Chicago, IL
Riverwalk East, Chicago, IL
31st Street Harbor, Chicago, IL
Waukegan Downtown and Lakefront Masterplan, Waukegan, IL
Milwaukee Harbor District Riverwalk Design Standards, Milwaukee, WI
Chicago River Design Guidelines Update, Chicago, IL
Positioning Pullman, Chicago, IL
South Grant Park Vision, Chicago, IL
South Boeing Gallery at Millennium Park, Chicago, IL

REGISTRATION

Licensed Landscape Architect, State of Illinois, #157-000818, 1992

EDUCATION

Bachelor of Landscape Architecture, 1985
Michigan State University

EMPLOYMENT HISTORY

1990—Present: President and Principal, *site*, Chicago, IL
1987—1990: Project Manager, Y.C. Wong & Associates, Chicago, IL
1986—1987: Project Manager, Daniel Weinbach and Associates, Chicago, IL
1983—1984: Project Designer, Michael J. Dul & Associates, Birmingham, MI

RESUMÉ



ROBERT K. SIT AIA
Principal Architect

BIO

Robert K. Sit is a Partner and Principal of *site* with expertise in architecture, business management, and technology development for the firm. He is responsible for the development and maintenance of all document control systems, financial accounting systems, general computer standards, and CADD standards for the firm. A Registered Architect in Illinois for over 37 years, he has designed numerous restaurant, retail, and institutional projects in the Chicago area. Mr. Sit is member of the American Institute of Architects, and contributes to the profession through continued advocacy and education.

PROFESSIONAL AFFILIATIONS

American Institute of Architects
Park Forest Planning Commission, Member 1985-1990
Celebration Ministries (formerly Hope Lutheran Church), President, Park Forest, IL
Grande Prairie Choral Arts, Board Member and Treasurer

SELECTED WORK

Parks, Plazas, and Open Space

FPCC Comfort Stations, Chicago, IL
City Colleges of Chicago Kennedy King Playground, Chicago, IL
Ping Tom Memorial Park, Riverfront Pavilion, Chicago, IL
Chicago Park District Field House Renovations, Chicago, IL

Civic + Institutional

Gateway Foundation, Chicago, IL
Senn High School / Rickover Naval Academy, Chicago, IL
Brentano School Campus Park, Chicago, IL
CSU Education Building Child Care, Chicago, IL
North Chicago VAMC Community Living Center, North Chicago, IL

Streetscapes + Transit

CTA 95th Street Station, Chicago, IL
80th Avenue Metra Station, Tinley Park, IL
Chinatown CTA Station, Conceptual Design, Chicago, IL
US Cellular Field - Permeable Lot L, Chicago, IL

REGISTRATION

Registered Architect State of Illinois, #183-000256 since 1983

EDUCATION

Master of Architecture, 1983
University of Illinois at Champaign-Urbana, Champaign, IL
Bachelor of Science in Architecture, 1978
University of Illinois at Champaign-Urbana, Champaign, IL

EMPLOYMENT HISTORY

1990—Present: *site*, Chicago, IL

RESUMÉ



HANA ISHIKAWA AIA, ASLA AFFILIATE
Design Principal

BIO

Hana Ishikawa is the Design Principal at *site*, often leading the design process with complex, yet thoughtful ideas. Hana’s projects have ranged from master planning of modern entertainment complexes, traditional commercial interiors, and historic streetscapes, to contemporary urban parks. Constantly looking for visually enticing environments from the rigid structure of classical aesthetics to cutting-edge modern design, whether it is conceptual design or construction details, she enjoys merging innovation and logic into all aspects of design. Born into a family of designers in Tokyo, with her unique educational history and eclectic job history at many different types of firms, her experience is diverse. Hana was recently named one of the Crain’s Chicago Business 2020 Notable Women in Construction and Design honorees and Young Architect honorable mention from The Architect’s Newspaper for the 2017 Best of Design Awards.

PROFESSIONAL AFFILIATIONS

American Institute of Architects
American Society of Landscape Architects, Affiliate
City of Chicago, Committee on Design

SELECTED WORK

Parks, Plazas, and Open Space

Henry C. Palmisano Park, Chicago, IL
90 North District West Park, Schaumburg, IL
Fox Lake Parks and Recreation Master Plan, Fox Lake, IL
Riverwalk East, Chicago, IL
Ping Tom Memorial Park—North Shoreline, Boathouse, and Fieldhouse, Chicago, IL
Mary Bartelme Park, Chicago, IL
Prairie District Park, Chicago, IL
Space to Grow Schoolyards: James Wadsworth Elementary, John W. Cook Academy, Fernwood Elementary School, Oliver S. Westcott Elementary, Arthur R. Ashe Elementary
Ninos Heroes Elementary, Chicago, IL
Mansueto High School, Chicago, IL
Downtown Montessori School, Milwaukee, WI

REGISTRATION

Registered Architect State of Illinois, # 001-025168, Since 2019.

EDUCATION

Bachelor of Architecture, 2006
Illinois Institute of Technology, with prior studies at Carnegie Mellon University

EMPLOYMENT HISTORY

2007—Present: *site*, Chicago, IL
2006—2007: Creative Director at Sage Alliances, Chicago, IL
2002—2006: Internship at Nomura Kougei Inc., Tokyo, Japan

RESUMÉ



BRADLEY C. MCCAULEY PLA, ASLA, CDT
Managing Principal

BIO

Brad McCauley is the Managing Principal at *site*, who specializes in construction detailing and contract documentation. Through Brad’s extensive knowledge in transforming design into buildable projects, he has helped facilitate numerous award-winning public spaces. His body of work includes urban waterfronts, streetscapes, residential developments, urban parks, playgrounds, and open space design in both the public and private sectors. A licensed landscape architect, Brad has also received Construction Document Technology certification from the Construction Specification Institute.

PROFESSIONAL AFFILIATIONS

American Society of Landscape Architects, Vice President of Membership
ASLA Illinois Chapter, Past Trustee and Past President
Stewardship Council, The Cultural Landscape Foundation
Consortium for Design and Construction Careers, Chair
Construction Specification Institute, CSI-I
UIUC Department of Landscape Architecture, Resource Committee

SELECTED WORK

Parks, Plazas, and Open Space

90 North District West Park, Schaumburg, IL
Fox Lake Parks and Recreation Master Plan, Fox Lake, IL
Riverwalk East, Chicago, IL
Mary Bartelme Park, Chicago, IL
3M Playgrounds: Mellin, Merryman, and Merrimac Parks, Chicago, IL
Ping Tom Memorial Park—North Shoreline, Boathouse, and Fieldhouse, Chicago, IL
Printers Row Park, Chicago, IL

Streetscapes + Transit

80th Avenue Metra Station, Tinley Park, IL
Harlem Avenue Median Improvements, Tinley Park, IL
Argyle Shared Street, Chicago, IL
Prairie Avenue Shared Street, Chicago, IL
IDOT High Speed Rail Stations, IL

REGISTRATION

Licensed Landscape Architect State of Illinois, Alabama, Arizona, Indiana, Iowa, Michigan, Missouri, New York, Ohio, Oregon, Texas, and Wisconsin:
157-001466, Since 2012
CLARB Certified Landscape Architect
Certified Document Technologist

EDUCATION

Bachelor of Landscape Architecture, 2007
University of Illinois at Urbana-Champaign, Champaign, IL

EMPLOYMENT HISTORY

2007—Present: *site*, Chicago, IL

RESUMÉ



CASSANDRA RICE PLA, ASLA, AICP
Planner and Community Engagement Specialist

BIO

Cassandra is a Landscape Architect and Planner whose work focuses on synthesizing environmental, economic, and cultural influences to create evidence-based, sustainable strategies for her clients. Her work spans a variety of scales and project types—from parks, playgrounds, and plazas to design guidelines and strategic planning. She effectively guides her clients through the design and planning process, and she has worked with a number of her clients to secure grants and additional funding for implementation. Cassandra is passionate about participatory planning and design, and brings exciting and innovative public outreach strategies to her projects.

PROFESSIONAL AFFILIATIONS

American Society of Landscape Architects
American Planning Association
Urban Land Institute
Illinois Association of Park Districts
Friends of the Chicago River, Planning Committee

SELECTED WORK

Urban Design + Planning

Fox Lake Parks and Recreation Master Plan, Chicago, IL
Milwaukee Harbor District Riverwalk Design Standards, Milwaukee, WI
Western Avenue Corridor Study, Chicago, IL
Chicago River Design Guidelines Update, Chicago, IL
31st Street Framework Plan, Chicago, IL
Vision 2020 Comprehensive and Strategic Plan, Elmhurst, IL*
Glencoe Park District Comprehensive Plan, Glencoe, IL*
Lombard Park District Comprehensive Plan, Lombard, IL*
Tinley Park Placemaking and Harmony Square Conceptual Design, IL*

Parks, Plazas, and Open Space

90 North District West Urban Park, Schaumburg, IL
St. Anthony Square, Easton, PA

*Project completed prior to joining *site*

REGISTRATION

Licensed Landscape Architect, State of Illinois, #157.001613, 2007
CLARB Certified Landscape Architect

EDUCATION

Bachelor of Landscape Architecture, 2012
Ball State University, Muncie, IN

EMPLOYMENT HISTORY

2018—present: *site*, Chicago, IL
2016—2018: The Lakota Group, Chicago, IL
2012—2016: Hitchcock Design Group, Chicago, IL

RESUMÉ



JEFFREY TROST ASLA, CDT
Field Technician

BIO

Jeff is a Field Technician at *site* with a background in landscape architecture construction administration. Jeff graduated from the University of Illinois at Urbana-Champaign’s Bachelor of Landscape Architecture program, with field expertise in landscape maintenance, plant identification, plant health, and irrigation. Most recently, Jeff has served as the field technician responsible for the Village of Tinley Park’s Emerald Ash Borer removal program.

PROFESSIONAL AFFILIATIONS

American Society of Landscape Architects
Illinois Chapter ASLA

SELECTED WORK

Parks, Plazas, and Open Space

Tinley Parkway Tree Planting, Tinley Park, IL
Tinley Landscape Maintenance Program, Tinley Park, IL
Tinley Stormwater & Natural Areas Maintenance, Tinley Park, IL
Tinley Park Landscape Plan Reviews and Audits, Tinley Park, IL
Tinley Park Public Library Natural Area Restoration, Tinley Park, IL
Emerald Ash Borer Treatment, Tinley Park, IL
Unity Green at Gill Park, Chicago, IL

Civic + Institutional

The Field Museum of Natural History, Chicago, IL
The University of Chicago Medicine Landscape Improvements, Chicago, IL
The University of Chicago Medicine Comer Children’s Hospital Parking Lot, Chicago, IL
Hawthorne Scholastic Academy, Chicago, IL
Sauganash Elementary School, Chicago, IL
Gale Elementary Academy, Chicago, IL

Streetscapes + Transit

Lakeview Lincoln Hub, Chicago, IL
Green Street Improvements, Champaign, IL
MCORE Multimodal Corridor Enhancement Project, Champaign/Urbana, IL

REGISTRATION

Certified Document Technologist

EDUCATION

Bachelor of Landscape Architecture, 2012
University of Illinois at Urbana-Champaign, Champaign, IL

EMPLOYMENT HISTORY

2014—Present: *site*, Chicago, IL
2012—2013: The Brickman Group, Wheeling, IL
2011—2012: Crop Science Dept., University of Illinois at Urbana-Champaign
2011: Klehm Arboretum & Botanic Garden, Rockford, IL

5/ PROPOSED HOURLY RATES



Prairie Avenue Shared Street

| Key Personnel Category | Base Hourly Rate (Unloaded) | Multiplier | Loaded Rate (with Overhead) |
|-------------------------------|------------------------------------|-------------------|------------------------------------|
| Project Manager | \$56 | 2.5 | \$140 |
| Landscape Architect | \$56 | 2.5 | \$140 |
| Wetland Specialist | \$56 | 2.5 | \$140 |
| Landscape Inspector | \$56 | 2.5 | \$140 |
| Wetland Inspector | \$56 | 2.5 | \$140 |
| Principal | \$84 | 2.5 | \$210 |
| Director | \$68 | 2.5 | \$170 |
| Designer | \$50 | 2.5 | \$125 |
| Drafter/Field Technician | \$40 | 2.5 | \$100 |
| Technical Aide | \$36 | 2.5 | \$90 |

6/ REQUIRED FORMS



Title

PROPOSAL SUMMARY SHEET
RFP #21-055
Landscape Architect Services

Business Name: site design group, ltd.

Street Address: 888 South Michigan Avenue, Unit PH1

City, State, Zip: Chicago, IL 60605

Contact Name: Robert K. Sit

Title: Vice President

Phone: [312] 427-7240 x104 Fax: [312] 427-7241

E-Mail address: marketing@site-design.com

Price Proposal

PROPOSAL TOTAL \$ Not Applicable

AUTHORIZATION & SIGNATURE

Name of Authorized Signee: Robert K. Sit

Signature of Authorized Signee:  _____

Title: Vice President Date: 10/20/2021

 **ORLAND PARK**
CERTIFICATE OF COMPLIANCE

The undersigned Robert K. Sit, as Vice President
(Enter Name of Person Making Certification) *(Enter Title of Person Making Certification)*

and on behalf of site design group, ltd., certifies that:
(Enter Name of Business Organization)

1) BUSINESS ORGANIZATION:

The Proposer is authorized to do business in Illinois: Yes [X] No []

Federal Employer I.D.#: 36-4397860
(or Social Security # if a sole proprietor or individual)

The form of business organization of the Proposer is (*check one*):

- Sole Proprietor
- Independent Contractor (*Individual*)
- Partnership
- LLC
- Corporation Illinois 02/15/2000
(State of Incorporation) *(Date of Incorporation)*

2) ELIGIBILITY TO ENTER INTO PUBLIC CONTRACTS: Yes [X] No []

The Proposer is eligible to enter into public contracts, and is not barred from contracting with any unit of state or local government as a result of a violation of either Section 33E-3, or 33E-4 of the Illinois Criminal Code, or of any similar offense of "Bid-rigging" or "Bid-rotating" of any state or of the United States.

3) SEXUAL HARASSMENT POLICY: Yes [X] No []

Please be advised that Public Act 87-1257, effective July 1, 1993, 775 ILCS 5/2-105 (A) has been amended to provide that every party to a public contract must have a written sexual harassment policy in place in full compliance with 775 ILCS 5/2-105 (A) (4) and includes, at a minimum, the following information: (I) the illegality of sexual harassment; (II) the definition of sexual harassment under State law; (III) a description of sexual harassment, utilizing examples; (IV) the vendor's internal complaint process including penalties; (V) the legal recourse, investigative and complaint process available through the Department of Human Rights (the "Department") and the Human Rights Commission (the "Commission"); (VI) directions on how to contact the Department and Commission; and (VII) protection against retaliation as provided by Section 6-101 of the Act. (Illinois Human Rights Act). (emphasis added). Pursuant to 775 ILCS 5/1-103 (M) (2002), a "public contract" includes "...every contract to which the State, any of its political subdivisions or any municipal corporation is a party."

4) EQUAL EMPLOYMENT OPPORTUNITY COMPLIANCE: Yes No

During the performance of this Project, Proposer agrees to comply with the "Illinois Human Rights Act", 775 ILCS Title 5 and the Rules and Regulations of the Illinois Department of Human Rights published at 44 Illinois Administrative Code Section 750, et seq. The

Proposer shall: (I) not discriminate against any employee or applicant for employment because of race, color, religion, sex, marital status, national origin or ancestry, age, or physical or mental handicap unrelated to ability, or an unfavorable discharge from military service; (II) examine all job classifications to determine if minority persons or women are underutilized and will take appropriate affirmative action to rectify any such underutilization; (III) ensure all solicitations or advertisements for employees placed by it or on its behalf, it will state that all applicants will be afforded equal opportunity without discrimination because of race, color, religion, sex, marital status, national origin or ancestry, age, or physical or mental handicap unrelated to ability, or an unfavorable discharge from military service; (IV) send to each labor organization or representative of workers with which it has or is bound by a collective bargaining or other agreement or understanding, a notice advising such labor organization or representative of the Vendor's obligations under the Illinois Human Rights Act and Department's Rules and Regulations for Public Contract; (V) submit reports as required by the Department's Rules and Regulations for Public Contracts, furnish all relevant information as may from time to time be requested by the Department or the contracting agency, and in all respects comply with the Illinois Human Rights Act and Department's Rules and Regulations for Public Contracts; (VI) permit access to all relevant books, records, accounts and work sites by personnel of the contracting agency and Department for purposes of investigation to ascertain compliance with the Illinois Human Rights Act and Department's Rules and Regulations for Public Contracts; and (VII) include verbatim or by reference the provisions of this Equal Employment Opportunity Clause in every subcontract it awards under which any portion of this Agreement obligations are undertaken or assumed, so that such provisions will be binding upon such subcontractor. In the same manner as the other provisions of this Agreement, the Proposer will be liable for compliance with applicable provisions of this clause by such subcontractors; and further it will promptly notify the contracting agency and the Department in the event any subcontractor fails or refuses to comply therewith. In addition, the Proposer will not utilize any subcontractor declared by the Illinois Human Rights Department to be ineligible for contracts or subcontracts with the State of Illinois or any of its political subdivisions or municipal corporations. Subcontract" means any agreement, arrangement or understanding, written or otherwise, between the Proposer and any person under which any portion of the Proposer's obligations under one or more public contracts is performed, undertaken or assumed; the term "subcontract", however, shall not include any agreement, arrangement or understanding in which the parties stand in the relationship of an employer and an employee, or between a Proposer or other organization and its customers. In the event of the Proposer's noncompliance with any provision of this Equal Employment Opportunity Clause, the Illinois Human Right Act, or the Rules and Regulations for Public Contracts of the Department of Human Rights the Proposer may be declared non-responsible and therefore ineligible for future contracts or subcontracts with the State of Illinois or any of its political subdivisions or municipal corporations, and this agreement may be canceled or avoided in whole or in part, and such other sanctions or penalties may be imposed or remedies involved as provided by statute or regulation.

5) **TAX CERTIFICATION:** Yes [X] No []

Contractor is current in the payment of any tax administered by the Illinois Department of Revenue, or if it is: (a) it is contesting its liability for the tax or the amount of tax in accordance with procedures established by the appropriate Revenue Act; or (b) it has entered into an agreement with the Department of Revenue for payment of all taxes due and is currently in compliance with that agreement.

6) **AUTHORIZATION & SIGNATURE:**

I certify that I am authorized to execute this Certificate of Compliance on behalf of the Contractor set forth on the Proposal, that I have personal knowledge of all the information set forth herein and that all statements, representations, that the Proposal is genuine and not collusive, and information provided in or with this Certificate are true and accurate. The undersigned, having become familiar with the Project specified, proposes to provide and furnish all of the labor, materials, necessary tools, expendable equipment and all utility and transportation services necessary to perform and complete in a workmanlike manner all of the work required for the Project.

ACKNOWLEDGED AND AGREED TO:



Signature of Authorized Officer

Robert K. Sit

Name of Authorized Officer

Vice President

Title

10/20/2021

Date

REFERENCES

Provide three (3) references for which your organization has performed similar work.

Bidder's Name: site design group, ltd.
(Enter Name of Business Organization)

1. ORGANIZATION Village of Tinley Park
ADDRESS 16250 S Oak Park Avenue, Tinley Park, Illinois 60477
PHONE NUMBER 708-444-5520
CONTACT PERSON Kelly Mulqueeny, Streets Superintendent
YEAR OF PROJECT 2008 - Present

2. ORGANIZATION Tinley Park Public Library
ADDRESS 7851 Timber Drive, Tinley Park, Illinois 60477
PHONE NUMBER 708-444-5520
CONTACT PERSON Zach Musil, Library Director
YEAR OF PROJECT 2011 - Present

3. ORGANIZATION The Field Museum of Natural History
ADDRESS 1400 S Lake Shore Dr, Chicago, IL 60605
PHONE NUMBER 708-444-5520
CONTACT PERSON Ernst Pierre-Toussaint, Director of Facility Planning & Operations
YEAR OF PROJECT 2014 - Present



ORLAND PARK

INSURANCE REQUIREMENTS

Please submit a policy Specimen Certificate of Insurance showing current coverage's

WORKERS' COMPENSATION & EMPLOYER LIABILITY

Full Statutory Limits - Employers Liability
\$500,000 – Each Accident \$500,000 – Each Employee
\$500,000 – Policy Limit
Waiver of Subrogation in favor of the Village of Orland Park

AUTOMOBILE LIABILITY (ISO Form CA 0001)

\$1,000,000 – Combined Single Limit Per Occurrence
Bodily Injury & Property Damage

GENERAL LIABILITY (Occurrence basis) (ISO Form CG 0001)

\$1,000,000 – Combined Single Limit Per Occurrence
Bodily Injury & Property Damage
\$2,000,000 – General Aggregate Limit
\$1,000,000 – Personal & Advertising Injury
\$2,000,000 – Products/Completed Operations Aggregate
Additional Insured Endorsements: ISO CG 20 10 or CG 20 26 and
CG 20 01 Primary & Non-Contributory
Waiver of Subrogation in favor of the Village of Orland Park



PROFESSIONAL LIABILITY

\$1,000,000 Limit - Claims Made Form, Indicate Retroactive Date
Deductible not-to-exceed \$50,000 without prior written approval



UMBRELLA LIABILITY (Follow Form Policy)

\$2,000,000 – Each Occurrence \$2,000,000 – Aggregate
EXCESS MUST COVER: General Liability, Automobile Liability, Employers' Liability



UMBRELLA/EXCESS PROFESSIONAL LIABILITY

\$1,000,000 Limit – Claims Made Form, Indicate Retroactive Date
Deductible not-to-exceed \$50,000 without prior written approval



BUILDERS RISK

Completed Property Full Replacement Cost Limits -
Structures under construction



ENVIRONMENTAL IMPAIRMENT/POLLUTION LIABILITY

\$1,000,000 Limit for bodily injury, property damage and remediation costs
resulting from a pollution incident at, on or mitigating beyond the job site



CYBER LIABILITY

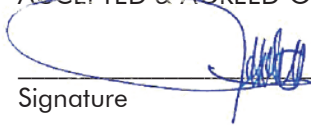
\$1,000,000 Limit per Data Breach for liability, notification, response,
credit monitoring service costs, and software/property damage

Any insurance policies providing the coverages required of the Consultant, excluding Professional Liability, shall be specifically endorsed to identify **"The Village of Orland Park, and their respective officers, trustees, directors, officials, employees, volunteers and agents as Additional Insureds on a primary/non-contributory basis with respect to all claims arising out of operations by or on behalf of the named insured."** The required Additional Insured coverage shall be provided on the Insurance Service Office (ISO) CG 20 10 or CG 20 26 endorsements or an endorsement at least as broad as the above noted endorsements as determined by the

Village of Orland Park. Any Village of Orland Park insurance coverage shall be deemed to be on an excess or contingent basis as confirmed by the required (ISO) CG 20 01 Additional Insured Primary & Non-Contributory Endorsement. The policies shall also contain a Waiver of Subrogation in favor of the Additional Insureds in regard to General Liability and Workers' Compensation coverage. The certificate of insurance shall also state this information on its face. Any insurance company providing coverage must hold an A-, VII rating according to Best's Key Rating Guide. Each insurance policy required shall have the Village of Orland Park expressly endorsed onto the policy as a Cancellation Notice Recipient. Should any of the policies be cancelled before the expiration date thereof, notice will be delivered in accordance with the policy provisions. Permitting the contractor, or any subcontractor, to proceed with any work prior to our receipt of the foregoing certificate and endorsements shall not be a waiver of the contractor's obligation to provide all the above insurance.

Consultant agrees that prior to any commencement of work to furnish evidence of Insurance coverage providing for at minimum the coverages, endorsements and limits described above directly to the Village of Orland Park, Nicole Merced, Purchasing Coordinator, 14700 S. Ravinia Avenue, Orland Park, IL 60462. Failure to provide this evidence in the time frame specified and prior to beginning of work may result in the termination of the Village's relationship with the contractor.

ACCEPTED & AGREED ON 10/20/2021



Signature

Robert K. Sit

Printed Name

Vice President

Title

Authorized to execute agreements for:

site design group, ltd.

Name of Company

Note: Sample Certificate of Insurance and Additional Insured Endorsements attached.

THANK YOU!

site

site // www.site-design.com