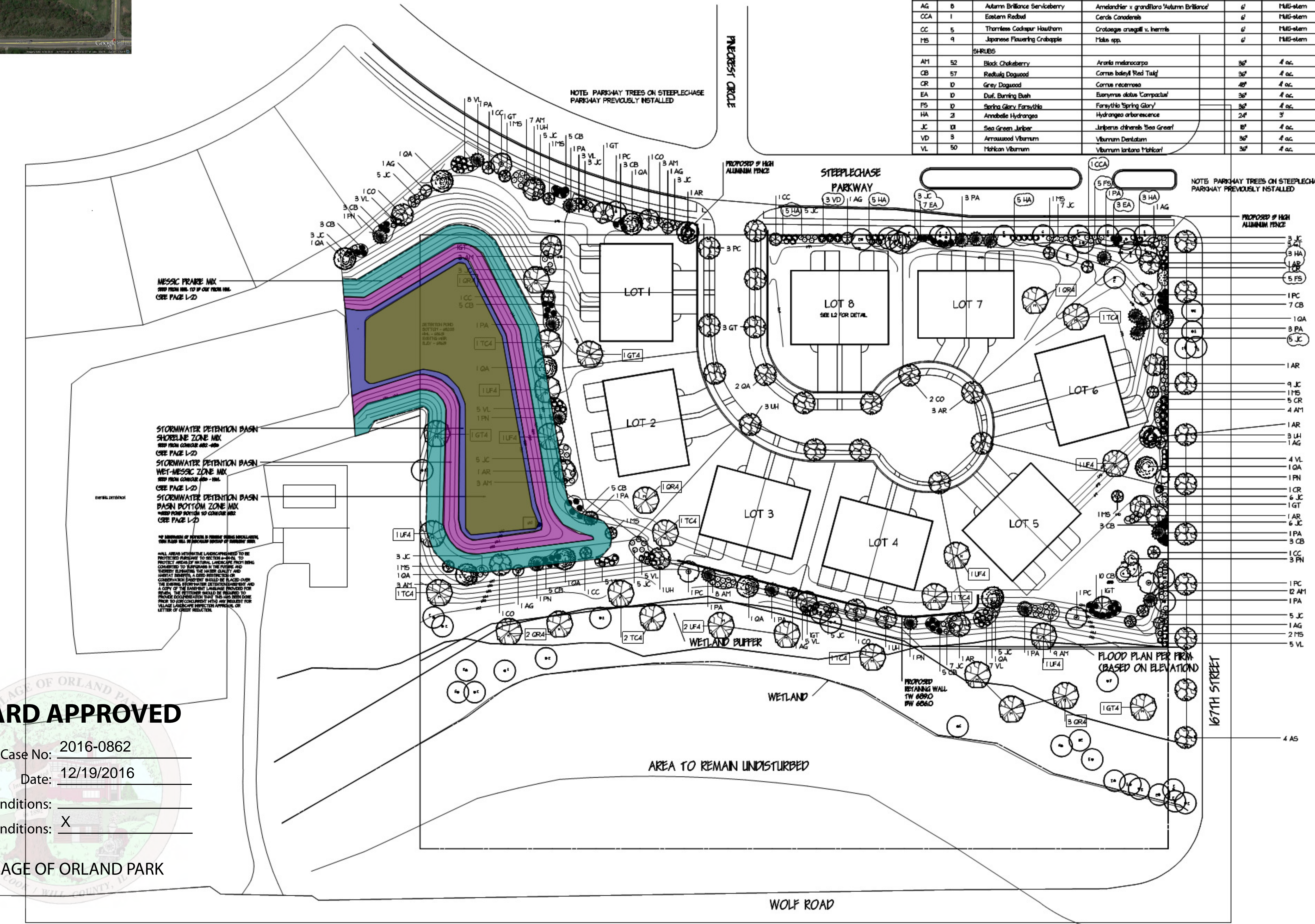


TREES FOR MITIGATION

| KEY | QUANTITY | COMMON NAME | BOTANICAL NAME | SIZE | REMARKS |
|-----|----------|---------------------|---------------------------------|------|-------------|
| GT4 | 3 | Skyline Honeylocust | Gleditsia triacanthos 'Skyline' | 4' | Single Stem |
| ORA | 8 | Red Oak | Quercus rubra | 4' | Single Stem |
| TCA | 8 | Greenspire Linden | Tilia cordata 'Greenspire' | 4' | Single Stem |
| UFA | 8 | Frontier Elm | Ulmus Frontier' | 4' | Single Stem |

NOTE: 8 TREES PER UNIT (64 TOTAL TREES) ARE COUNTED TOWARD MITIGATION. ALL SHADE TREES WILL BE 4' ORNAMENTALS WILL BE 8'

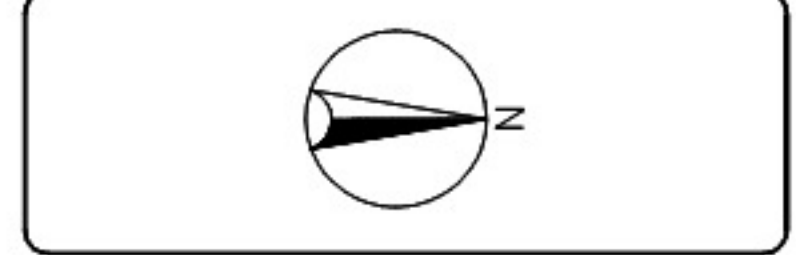
| KEY | QUANTITY | COMMON NAME | BOTANICAL NAME | SIZE | REMARKS |
|-------------------------|----------|--------------------------------|---|------|--------------|
| SHADE TREES | | | | | |
| AR | 12 | Red Maple | Acer rubrum | 25' | Single Stem |
| AS | 4 | Sugar Maple | Acer saccharum | 25' | Single Stem |
| CO | 6 | Common Highberry | Celtis occidentalis | 25' | Single Stem |
| GT | 12 | Skyline Honeylocust | Gleditsia triacanthos 'Skyline' | 25' | Single Stem |
| PC | 8 | Cleveland Select Pear | Pyrus clevelandiana 'Cleveland Select' | 25' | Single Stem |
| QA | 12 | White Oak | Quercus alba | 25' | Single Stem |
| UH | 9 | Hornbeam Elm | Ulmus Hornbeam' | 25' | Single Stem |
| EVERGREEN TREES | | | | | |
| PN | 8 | Asiatic Pine | Pinus nigra | 6' | Natural Form |
| PA | 16 | Norway Spruce | Picea abies | 6' | Natural Form |
| ORNAMENTAL TREES | | | | | |
| AG | 8 | Autumn Brilliance Serviceberry | Amelanchier x grandiflora 'Autumn Brilliance' | 6' | Multi-stem |
| CCA | 1 | Eastern Redbud | Cercis canadensis | 6' | Multi-stem |
| CC | 5 | Thornless Cockspur Hawthorn | Crataegus crusgalli v. thornless | 6' | Multi-stem |
| MS | 9 | Japanese Flowering Crabapple | Malus spp. | 6' | Multi-stem |
| SHRUBS | | | | | |
| AM | 52 | Black Chokeberry | Aronia melanocarpa | 36" | 4 ac. |
| CB | 57 | Redtwig Dogwood | Cornus kochii 'Red Twig' | 36" | 4 ac. |
| CR | 10 | Grey Dogwood | Cornus racemosa | 48" | 4 ac. |
| EA | 10 | Duf. Burning Bush | Burnynus alata 'Compacta' | 36" | 4 ac. |
| FS | 10 | Siraha Glory Forsythia | Forsythia 'Spring Glory' | 36" | 4 ac. |
| HA | 2 | Annabelle Hydrangea | Hydrangea arborescens | 24" | 3' |
| JC | 18 | Sea Green Juniper | Juniperus chinensis 'Sea Green' | 18" | 4 ac. |
| VD | 3 | Arnuwood Viburnum | Viburnum Dentatum | 36" | 4 ac. |
| VL | 50 | Hahnian Viburnum | Viburnum lentago 'Hahnian' | 36" | 4 ac. |



NOTES

| No. | Date | Description |
|-----|----------|--------------------|
| 1 | 5/8/16 | REVIEW 1 REVISIONS |
| 2 | 7/2/16 | REVIEW 2 REVISIONS |
| 3 | 8/10/16 | REVISE SEED MIXES |
| 4 | 8/25/16 | REVISE SEED MIXES |
| 5 | 10/20/16 | REVISE SEED MIXES |
| 6 | 10/26/16 | REVISE SEED MIXES |
| 7 | 1/4/16 | ADD SEED MIX |

MARTH CONSTRUCTION CO.
14800 S 80TH AVE
ORLAND PARK, ILLINOIS
ADDITION TO GRASSLANDS LANDSCAPE PLAN
ORLAND PARK, ILLINOIS



BEARY LANDSCAPING
15001 W. 159TH STREET
LOCKPORT, IL 60441
815-838-4100 P
818-838-3200 F

| | |
|---------------------|-------------|
| SCALE: 1" = 40' | PROJECT NO. |
| DRAWN BY: KLT | SHEET NO. |
| CHECKED BY: B BEARY | L-1 |
| DATE: 2/29/16 | |
| DATE OF PRINT | |

BOARD APPROVED

Case No: 2016-0862
Date: 12/19/2016
W/Conditions:
W/Out Conditions: X

VILLAGE OF ORLAND PARK