

Chicago SMSA

Limited Partnership
d/b/a Verizon Wireless
1515 Woodfield Rd.
Suite 1400,
Schaumburg, IL 60173

Fullerton
Engineering Consultants

9100 W. Higgins Rd, Suite 800
Rosemont, Illinois 60018
Tel. 847-292-0100
Fax 847-292-0105

THIS DRAWING IS THE PROPERTY OF FULLERTON ENGINEERING CONSULTANTS, INC. IT IS FOR THE EXCLUSIVE USE OF THIS PROJECT. ANY RE-USE OF THIS DRAWING WITHOUT THE EXPRESSED WRITTEN CONSENT OF FULLERTON ENGINEERING CONSULTANTS, INC. IS PROHIBITED.

SITE NAME

RT. 7 & WEST

LOCATION NUMBER

181771

PROJECT NUMBER

2008284361

SITE ADDRESS

15501 PARK STATION BLVD.
ORLAND PARK, IL 60461

#	DATE	REVISIONS	
1	05/18/09	ZONING	AU
2	08/14/09	ZONING	AU

CHECKED BY: RJ

APPROVED BY: MB

DATE SIGNED: _____

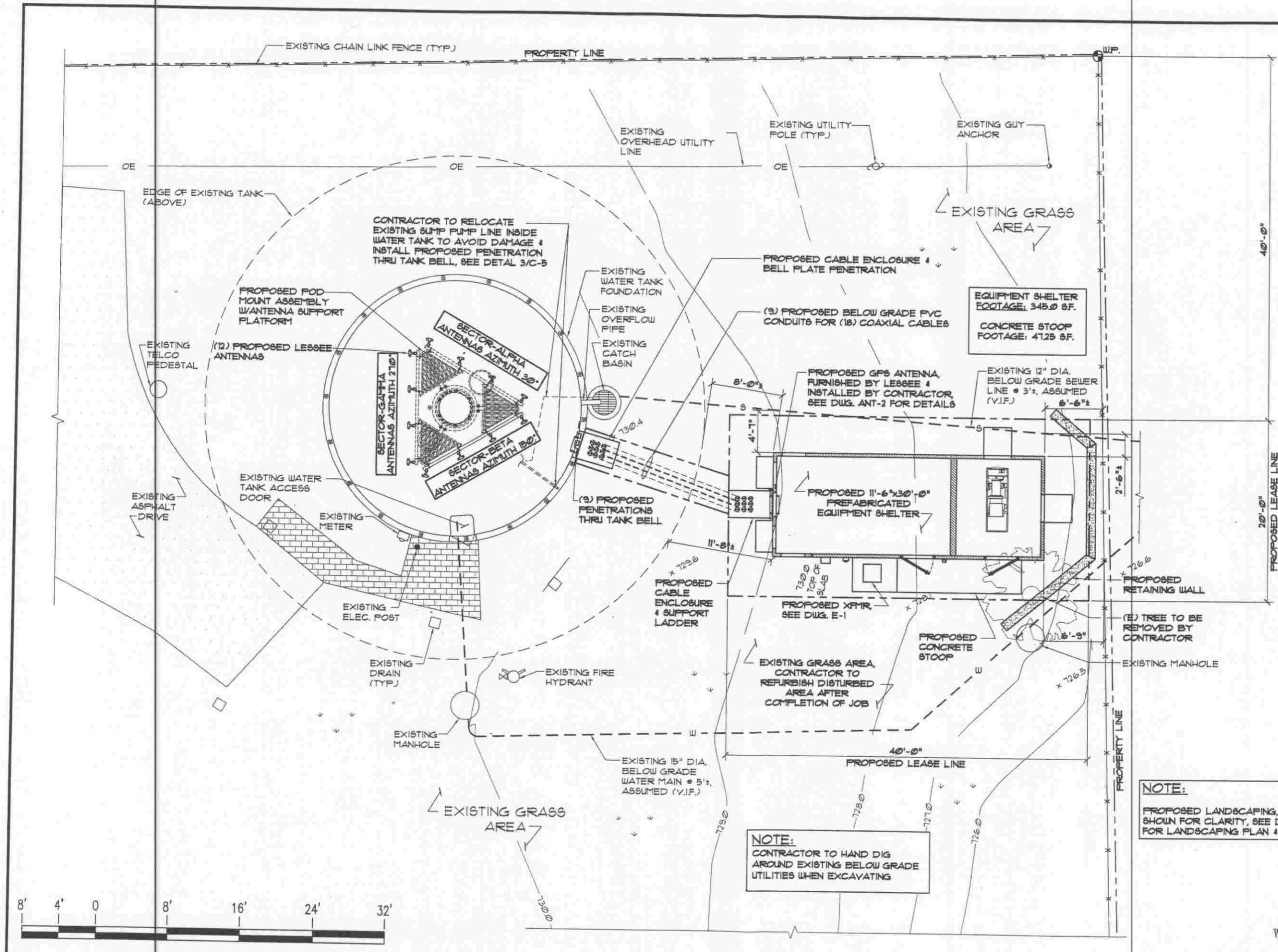
EXPIRATION DATE: _____

SHEET TITLE

ENLARGED
SITE PLAN

SHEET NUMBER

Z-2



NOTE:
CONTRACTOR TO HAND DIG AROUND EXISTING BELOW GRADE UTILITIES WHEN EXCAVATING

NOTE:
PROPOSED LANDSCAPING, NOT SHOWN FOR CLARITY, SEE DIAG. Z-3 FOR LANDSCAPING PLAN & DETAILS

ENLARGED SITE PLAN