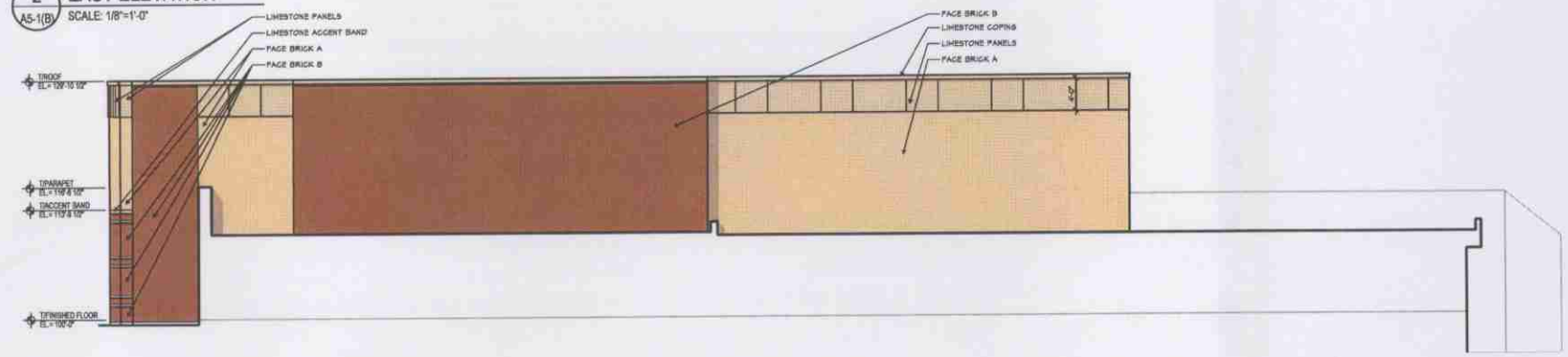




1 NORTH ELEVATION
AS-1(B) SCALE: 1/8"=1'-0"



2 EAST ELEVATION
AS-1(B) SCALE: 1/8"=1'-0"

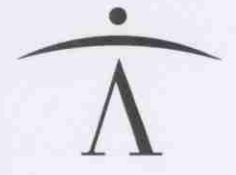


3 SOUTH ELEVATION
AS-1(B) SCALE: 1/8"=1'-0"



6 WEST ELEVATION
AS-1(B) SCALE: 1/8"=1'-0"

- GENERAL NOTES**
1. FACE BRICK A MATCHES THE EXISTING COMMONS BRICK IN COLOR. TO BE MODULAR, RUNNING BOND.
 2. FACE BRICK B MATCHES THE EXISTING CHURCH BRICK IN COLOR. TO BE MODULAR, RUNNING BOND.
 3. LIMESTONE TO BE BUFF, SMOOTH.
 4. ALL WINDOWS TO BE PREFINISHED ALUMINUM.



newmanArchitecture
1730 Park Street, Suite 115, Naperville, Illinois 60563-2611
630-430-1688 FAX 630-430-1787 info@newmanarchitecture.com

Participating Consultants



Project Name:
**CONSTRUCTION DOCUMENTS
ST. MICHAEL PARISH
CENTER**

14327 HIGHLAND AVENUE
ORLAND PARK, IL 60462

FOR
THE ARCHDIOCESE
OF CHICAGO

Architect's Certification:

License: Illinois Professional Design Firm
License No. 184-005548
Expires: 4/30/08
License: Illinois Registration No. _____
Expires: _____

Drawing Title:
**EXTERIOR ELEVATIONS -
OPTION B**

Issue/Revision:
No. Date Description
- 10/17/07 Village Review

Project No.: 07001 Date: 10/17/07

A5-1(B)