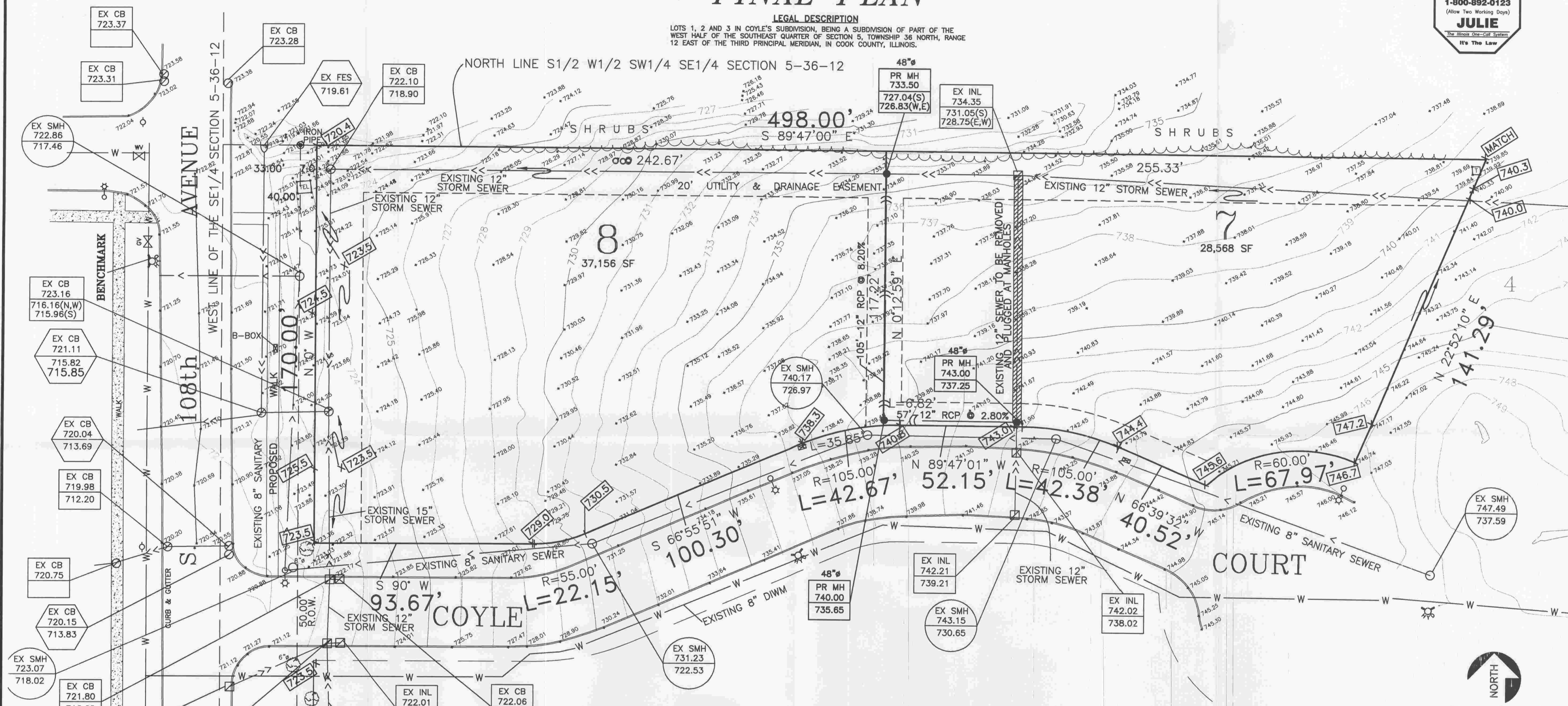


COYLE'S RESUBDIVISION FINAL PLAN

LEGAL DESCRIPTION
 LOTS 1, 2 AND 3 IN COYLE'S SUBDIVISION, BEING A SUBDIVISION OF PART OF THE WEST HALF OF THE SOUTHEAST QUARTER OF SECTION 5, TOWNSHIP 36 NORTH, RANGE 12 EAST OF THE THIRD PRINCIPAL MERIDIAN, IN COOK COUNTY, ILLINOIS.

BEFORE YOU DIG
CALL
 1-800-892-0123
 (Allow Two Working Days)
JULIE
 The Missions - Call System
 It's The Law



SITE BENCHMARK
 TOP SOUTHEAST FLANGE BOLT ON FIRE HYDRANT LOCATED ON THE SOUTH SIDE OF CUL-DE-SAC ON ROAD DRIVE.
 ELEVATION = 734.09 (NGVD29)

	EXISTING	PROPOSED
WATER MAIN	— W —	— W —
STORM SEWER	— S —	— S —
SANITARY SEWER	— SA —	— SA —
MANHOLE	○	○
CATCH BASIN	○	○
INLET	○	○
FLARED END SECTION	○	○
FIRE HYDRANT	○	○
WATER VALVE	○	○
LIGHT POLE	○	○
TOP OF FOUNDATION	T/F: 700.00	T/F: 700.00
SPOT ELEVATION	x 675.00	x 675.00
SWALE	— SW —	— SW —
OVERLAND FLOW ROUTE	— OF —	— OF —

DATA TABLE		
PROPOSED ZONING R-1		
PROJECT AREA	1.51 ACRES	
RESIDENTIAL UNITS	2 LOTS	
MINIMUM AREA	28,568 S.F.	
AVERAGE AREA	32,862 S.F.	
GROSS DENSITY	1.3 UNITS/ACRE	
NET DENSITY	1.3 UNITS/ACRE	
SETBACKS	REQUIRED	PROPOSED
FRONT	40 FT.	30 FT.
SIDE	15 FT.	15 FT.
REAR	45 FT.	33.75 FT.

NORTH
 SCALE: 1" = 20'

BOARD APPROVED
 CASE NO. 2009-0248
 DATE 7-20-09
 V/C CONDITIONS
 W/O CONDITIONS

RECEIVED
 JUL 10 2009
 BUILDING DEPT.

Kevin D. Chaffin



DATED: JUNE 24, 2009		ENGINEERED BY:	
REVISION	DATE	KDC CONSULTANTS INC.	
TOPOGRAPHY	4/30/09	16144 S. BELL ROAD HOMER GLEN, ILLINOIS 60491 (708) 645-0545 Fax: 645-0546	
SEWER RELOCATION	5/06/09	PREPARED FOR:	
VILLAGE COMMENTS	6/24/09	COYLE CONSTRUCTION CO. 10681 STONE HILL DRIVE ORLAND PARK, ILLINOIS 60467 (708) 590-6014 FAX 590-6019	
PROJECT 09-04-016		1 PAGE OF 1	