

5. GENERAL NOTES:

- 1. REFER TO CIVIL DRAWINGS FOR FINISH GRADES AND LOCATION OF WALKS.
- 2. PROVIDE BLOCKING FOR ALL EXTERIOR WALL MOUNTED LIGHT FIXTURES, AWNINGS & SIGNS AS REQUIRED.
- 3. PAINT ALL WOOD AND METALS EXPOSED TO THE EXTERIOR.

6. DRIVE - THRU WINDOW:

QUIKSERV FULLY AUTOMATIC BI-PARTING MODEL BP-724IE, FINISH TO BE "BLACK" (MATTED)
CONTACT: JACKIE SLIGH • (800) 388-8307

7. STOREFRONT NOTES:

ALL STOREFRONT TO HAVE 1/4" RADIUS SILL ON INSIDE FRAME PRODUCT: YKK - YES 45
TO OBTAIN A LIST OF QUALIFIED GLAZING CONTRACTORS CONTACT: CFA CONSTRUCTION MANAGER

FINISH "BLACK"

SUPPLIER: YKK - WES THORPE
7630 THE BLUFFS, STE. 100
ALUSTELL, GA 30166
1-678-838-6000
1-678-838-6012 (DIRECT)
EMAIL: WESTHORPE@YKK-API.COM

8. STUCCO:

3 COAT EXTERIOR PORTLAND CEMENT PLASTER STUCCO (5/8") SCRATCH COAT, BROWN COAT AND EIFS TOP COAT. TOP FINISH SHALL BE 100% ACRYLIC BASED FINISH UTILIZING AN ELASTOMERIC BINDER AND DIRT PICK-UP (DRP) TECHNOLOGY. FINISH SHOULD USE INTEGRAL COLOR TO MATCH PAINT COLORS SPECIFIED AND HAVE A QUARTZPUTZ TEXTURE. PROVIDE ACCESSORIES AS SHOWN OR REQUIRED INCLUDING CASING BEADS, 1/4" DEEP "V" DRIP SCREEDS, EXPANSION JOINTS CORNER BEADS, CONTROL JOINTS, ETC.

9. STUCCO COLORS:

STUCCO #1 TO MATCH SHERWIN WILLIAMS COLOR: SW 0006 TOILE RED

10. BRICK:

- BRICK #1 "RED VELOUR" BY CUNNINGHAM BRICK, MODULAR SIZE
- BRICK #2 "TAN VELOUR" BY CUNNINGHAM BRICK, MODULAR SIZE
- BRICK #3 "WINCHESTER HANDCRAFT" BY PINE HALL BRICK, MODULAR SIZE
- MORTAR - LAFARGE "SANTAN"

NATIONAL SUPPLIER:

CUNNINGHAM BRICK
701 NORTH MAIN STREET
LEXINGTON, NC 27292
336-248-8541
CONTACT: CHRIS BENNETT 1-800-553-8499
EMAIL: CHRIS @ CUNNINGHAM.COM

BRICK TIES: CORRUGATED BRICK TIES SPACED 16" O.C. HORIZONTALLY AND 24" O.C. VERTICALLY ON NEW CONSTRUCTION MINIMIZE CLEANING BY:

KEEPING BRICK COVERED WITH PLASTIC KEEPING MORTAR TROWELING AND DROPPINGS OFF BRICK
SPREADING STRAW AROUND THE FOUNDATION TO KEEP DIRT OFF OF THE WALL
CLEANING BRICK AS YOU GO, ESPECIALLY THE HEAVY DEPOSITS OF DIRT AND MORTAR

PROCEDURES:

- 1. REMOVE LARGE PARTICLES FROM THE WALL WITH A HAND TOOL.
- 2. THOROUGHLY PRE-WET THE AREA WITH PLENTY OF WATER.
- 3. MAKE SURE THE AREA BELOW THE SECTION TO BE CLEANED IS ALSO THOROUGHLY WET.
- 4. THE WALL MUST REMAIN WET AT ALL TIMES THROUGHOUT THE CLEANING PROCESS.
- 5. IF A TEST PANEL CANNOT BE USED, A SMALL AREA SHOULD BE TESTED PRIOR TO CLEANING.
- 6. APPLY THE CLEANER ACCORDING TO THE MANUFACTURER'S INSTRUCTIONS RINSE THOROUGHLY WITH WATER.

RECOMMENDED CLEANERS:

- 1. CLOROX, TILEX, OR VANISH TO REMOVE MILDEW
- 2. 800 STAIN REMOVER FOR VANADIUM STAIN
- 3. VANA TROL FOR GENERAL CLEANING
- 4. ENVIROKLEAN MPC FOR MUD AND OIL STAINS

BE SURE TO FOLLOW MANUFACTURERS RECOMMENDED PROCEDURES ON THE LABEL

II. AWNING:

FABRIC AWNING BY SUNBRELLA. COLOR TO BE BLACK.
SECURE AWNING BRACKET TO 2X6 BLOCKING WITH 3/8" LAG BOLTS (2 TOP AND 2 BOTTOM OF EACH BRACKET) AND NEOPRENE WASHER. LIGHT FIXTURE IS INSTALLED ON 3" WIDE BRACKET AFFIXED TO AWNING FRAME. MOUNT PERFORATED SCREEN BELOW LIGHT FIXTURE WITH 1/2" BOLTS TO WELDED NUTS ON FRAME.

AWNING SCHEDULE:

- A 5'-4" LONG
- B 11'-0" LONG

12. HARDI SOFFITS:

NON-COMBUSTIBLE FIBER-CEMENT PANELS AS MANUFACTURED BY JAMES HARDI BUILDING PRODUCTS INC. PANELS SHALL BE SECURED WITH STAINLESS STEEL FASTENERS ACCORDING TO MANUFACTURER'S WRITTEN INSTRUCTIONS.

13. NOT USED:

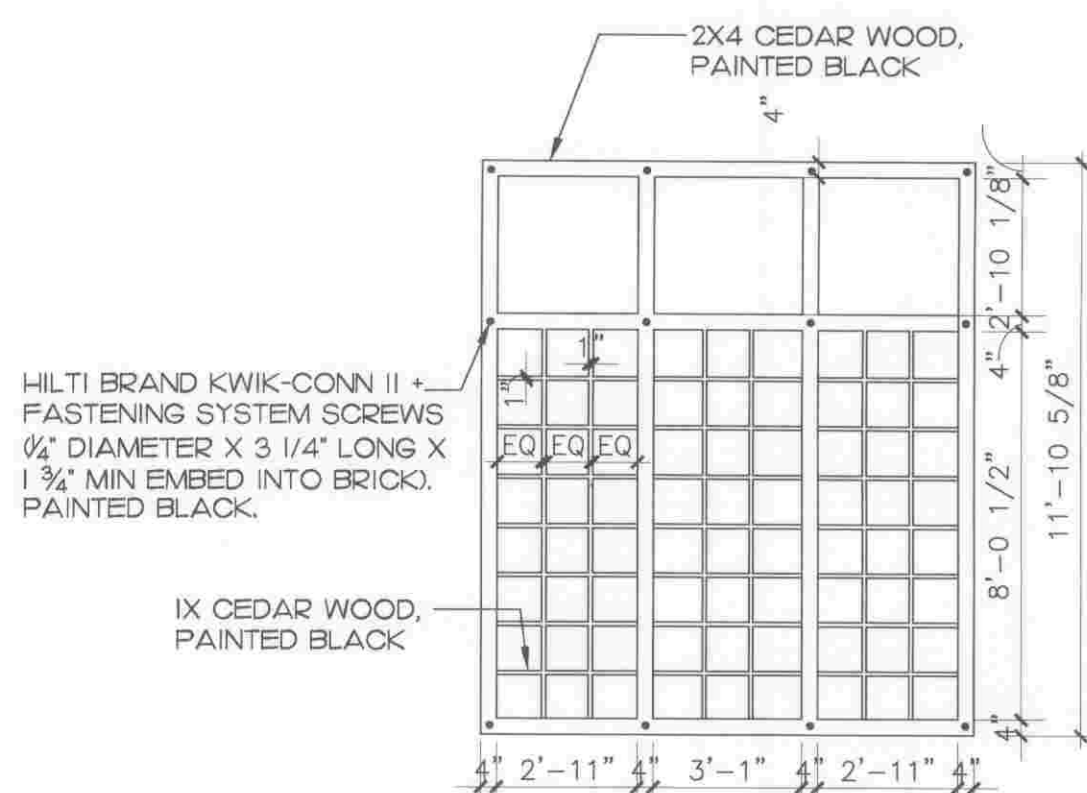
14. SELF ADHERING MEMBRANE FLASHING:

20-25 MIL "WINDOW FLASHING TAPE" CONSISTING OF A SELF-ADHESIVE BUTYL RUBBER MATERIAL INTERGRATED ON ONE SIDE WITH A UV RESISTANT POLYETHYLENE FILM AND AN AGGRESSIVE BUTYL ON THE REVERSE SIDE.
CAUTION: VERIFY COMPATIBILITY OF SEALANTS WITH FLASHING TAPE

15. NOT USED

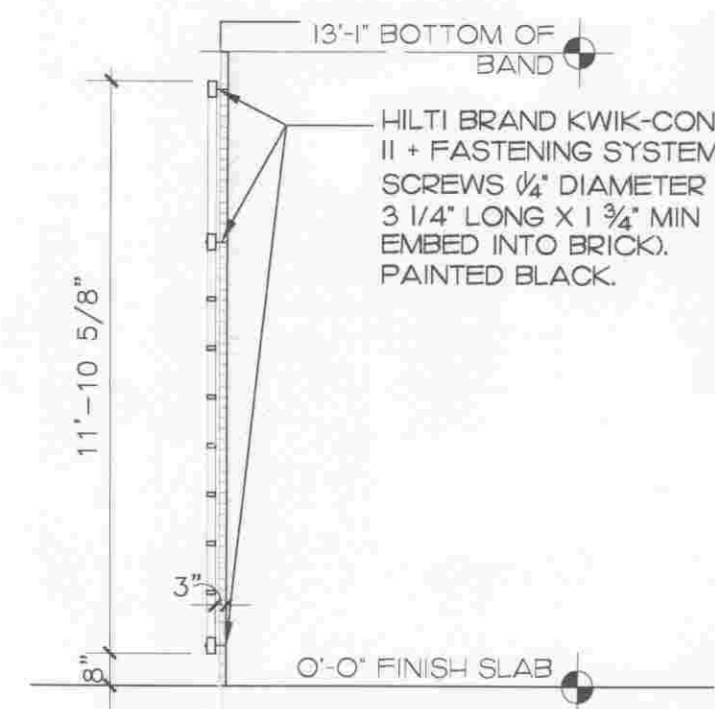
16. METAL COPING

FINISH TO MATCH PAC-CLAD, PETERSON ALUMINUM. COLOR "SIERRA TAN"

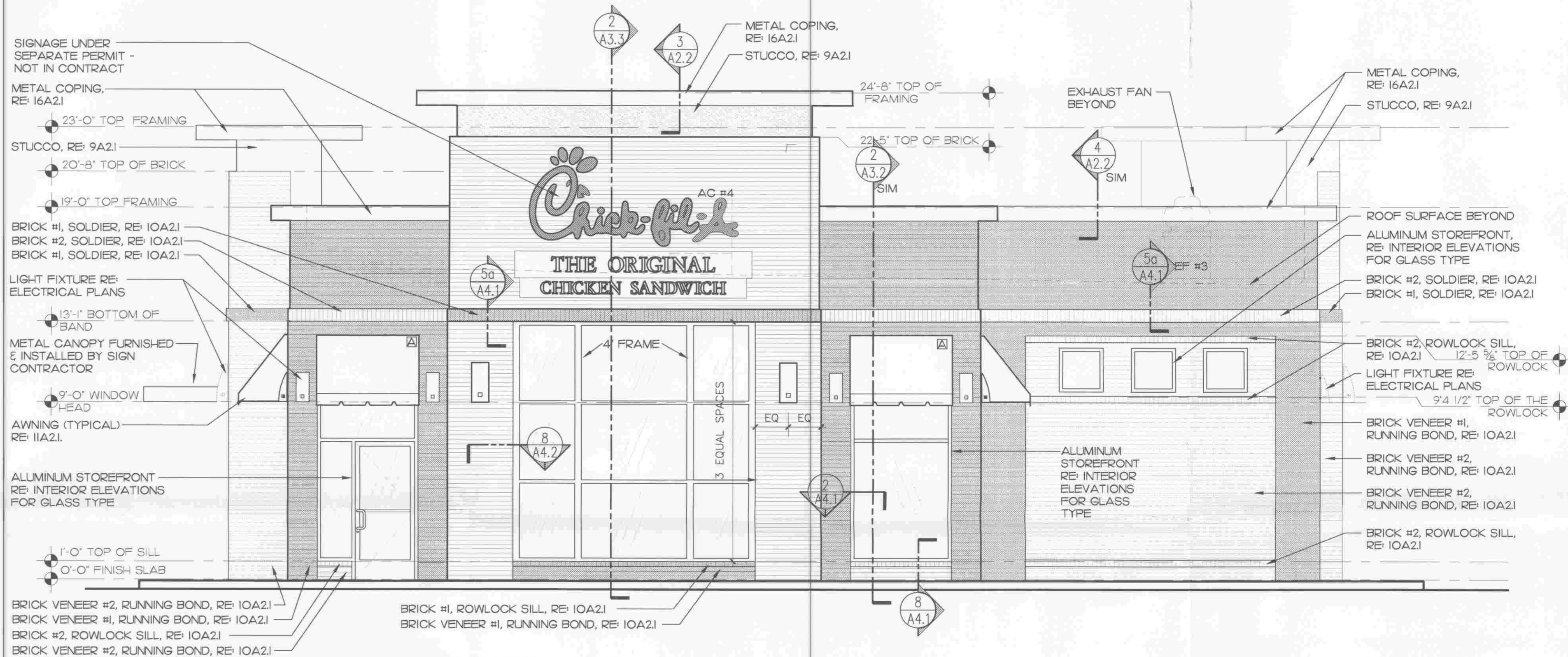


ELEVATION

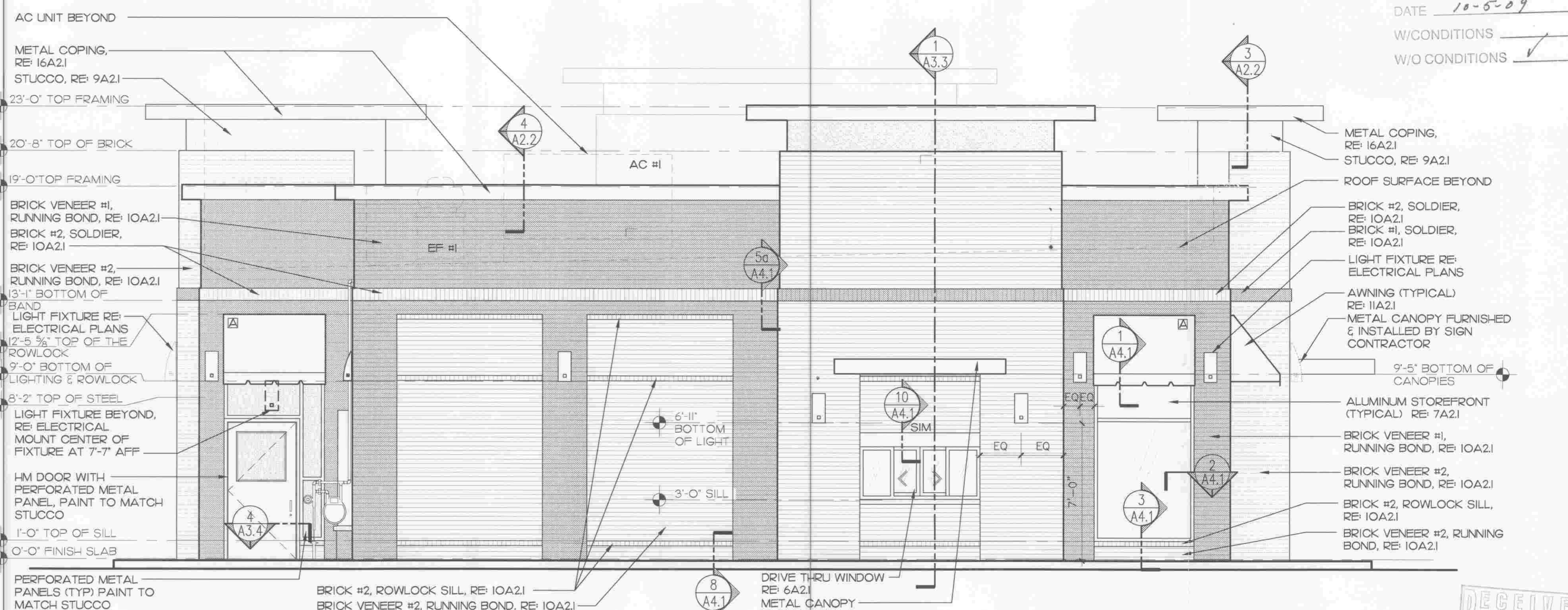
4 Trellis Detail
1/4" = 1'-0"



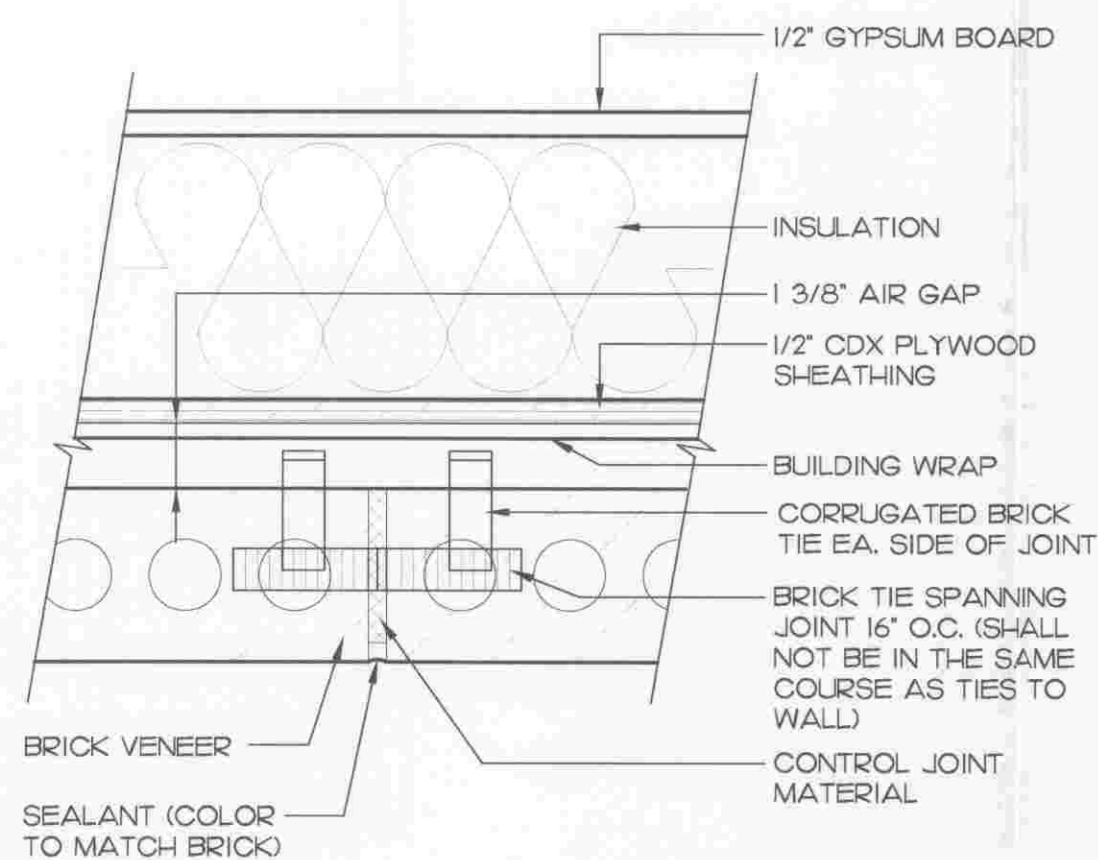
SECTION



1 NORTH ELEVATION
1/4" = 1'-0"



2 SOUTH ELEVATION
1/4" = 1'-0"



3 BRICK CONTROL JOINT
3" = 1'-0"

BOARD APPROVED
CASE NO. 2009-0344
DATE 10-5-09
W/CONDITIONS
W/O CONDITIONS

CHICK-FIL-A ARCHITECTS, P.C.
5200 Buffington Rd.
Atlanta Georgia,
30349-2998

Revisions:
Mark Date By
△
△
△

ILLINOIS DESIGN FIRM #184-002963
E. H. ARCHITECTS, P.C.
THE HORSE BARN AT
MARYLAND FARMS
28 WARD CIRCLE, SUITE 1
BREVARD COUNTY, TENNESSEE
PHONE: 651.937.3111
FAX: 651.937.0978
E-MAIL: general@eharchitect.com

STORE #2638
Chick-Fil-a FSU
S06A

ORLAND PARK, IL
SHEET TITLE
EXTERIOR
ELEVATIONS

DWG EDITION 07.1
REVISION

Job No. :
Store : 2638
Date : 07/09/09
Drawn By :
Checked By :
Sheet

A-2.1