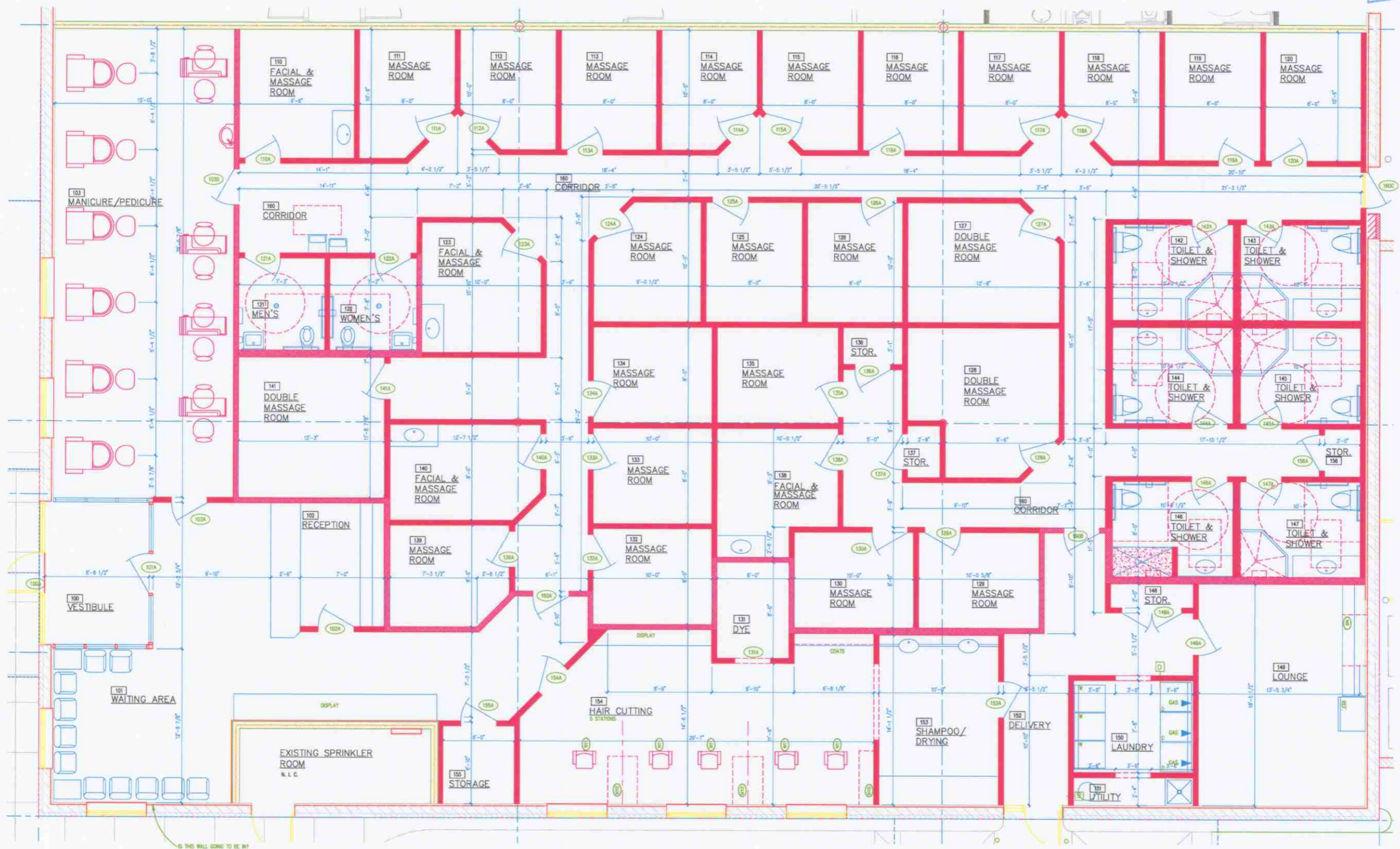


BOARD APPROVED
CASE NO. 2007-0800.2
DATE 2/4/08
W/O CONDITIONS
W/O CONDITIONS

GENERAL NOTES

- (E) INDICATES EXPRESS WINDOW
MIN. OPENABLE AREA OF 3.7 SQ. FT. MIN. OPENABLE
CLEAR HEIGHT OF 2' AND A MINIMUM CLEAR WIDTH
OF 1'-6" WINDOW NOT TO BE MORE THAN 44" ABOVE
FINISHED FLOOR.
- (T) TEMPERED GLASS REQUIRED
- (N) PRINCE HOOK UP AND ELECTRICAL OUTLET @ 42" A.F.F.

RECEIVED
BY
JAN 30 2008



Heavenly Massage of Orland Park
159th Street & LaGrange Road, Orland Park, Illinois

Styczynski Walker & Associates
architects
535 Plainfield Rd., Suite B - Willowbrook, Illinois 60527
630/789-2513 FAX 630/789-2515
swa-architects.com

LDGlarge.gif

DATE
03/26/07

REVISIONS

PROJECT
06291

SHEET
A1.1