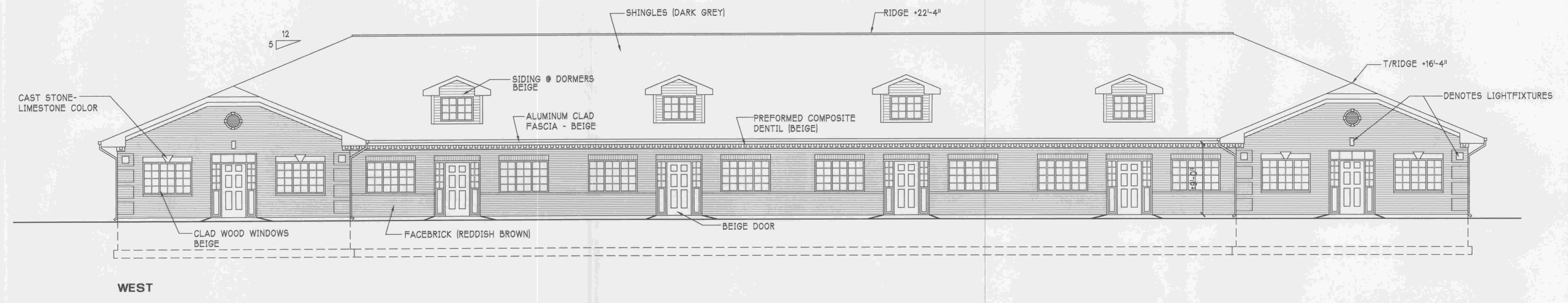


1 EXTERIOR ELEVATIONS 1/8"=1'-0"

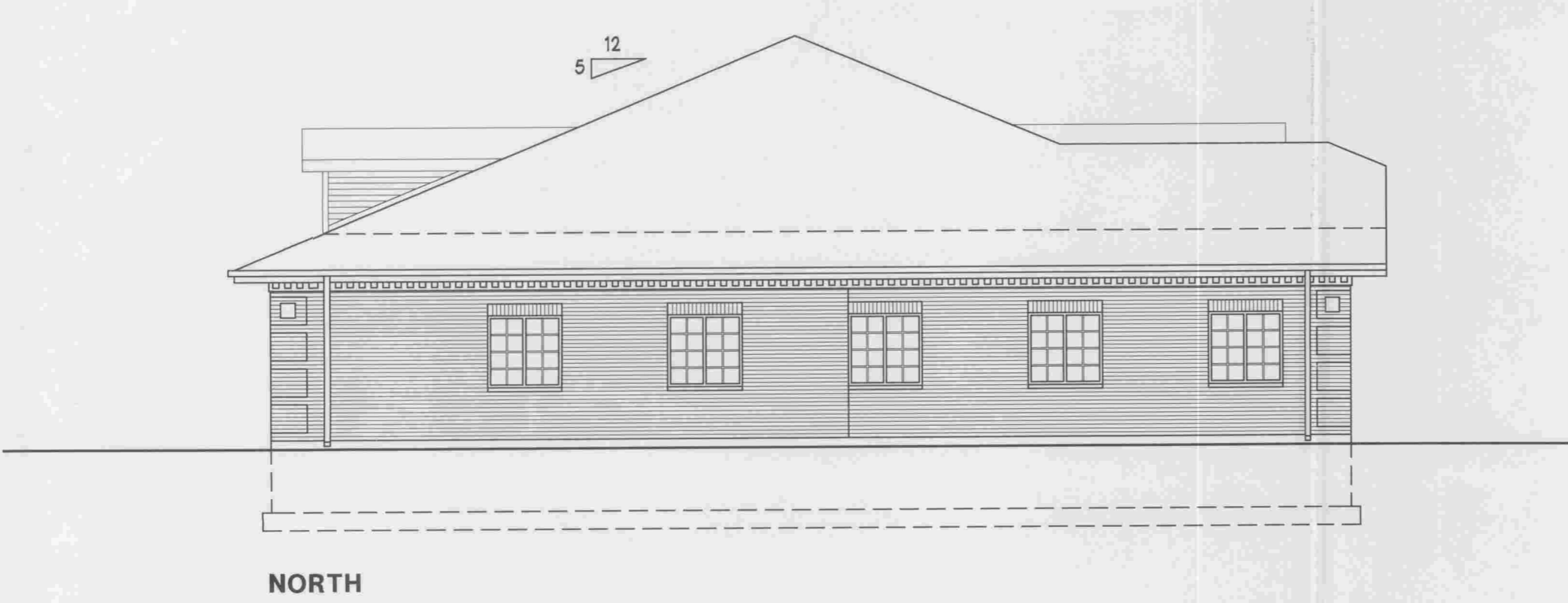
EXTERIOR MATERIAL DESIGN NOTE:
IT IS THE INTENTION THAT THE EXTERIOR MATERIALS OF THIS BUILDING WILL MATCH THE EXTERIOR MATERIALS OF THE EXISTING ADJACENT DISTINCTIVE OFFICE CENTER



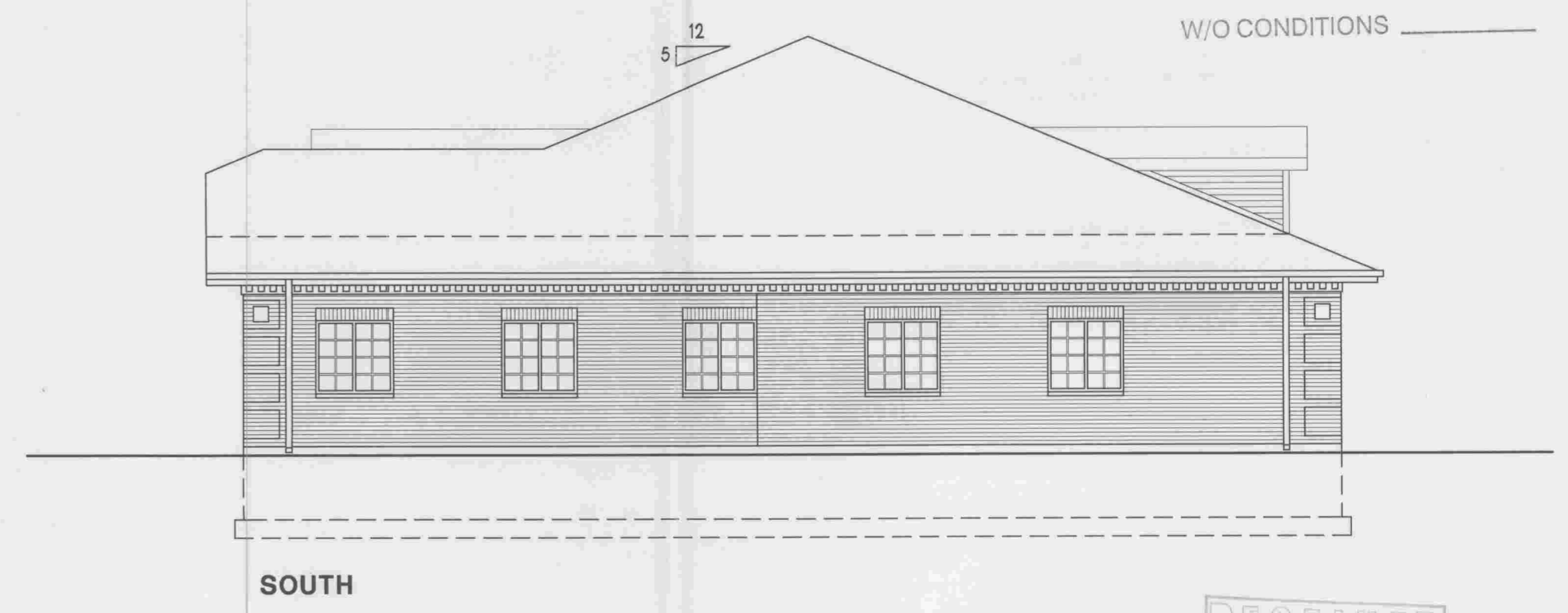
WEST



EAST



NORTH



SOUTH

BOARD APPROVED
CASE NO. 8007-0634.2
DATE 2/04/08
W/CONDITIONS
W/O CONDITIONS

RECEIVED
JAN 31 2008
By _____

CRAIG A. PODALAK ARCHITECTS
12410 S. NASHVILLE AVE.
PALOS HEIGHTS, IL 60463
708 / 389-3333

COPYRIGHT © 2007 CRAIG A. PODALAK RESERVES COPYRIGHT & OTHER RIGHTS RESTRICTING THESE DOCUMENTS TO THE ORIGINAL SITE OR PURPOSE FOR WHICH THEY WERE PREPARED. REPRODUCTIONS, CHANGES, OR ASSIGNMENTS ARE PROHIBITED.

OFFICE BUILDING
183RD PLACE WEST OF WOLF ROAD
ORLAND PARK, ILLINOIS

PROJECT NO. 0715
DATE 10-16-07
1-14-07

DRAWN BY RD
CHECKED BY CAP
FILE 0715-1

1 OF 1