



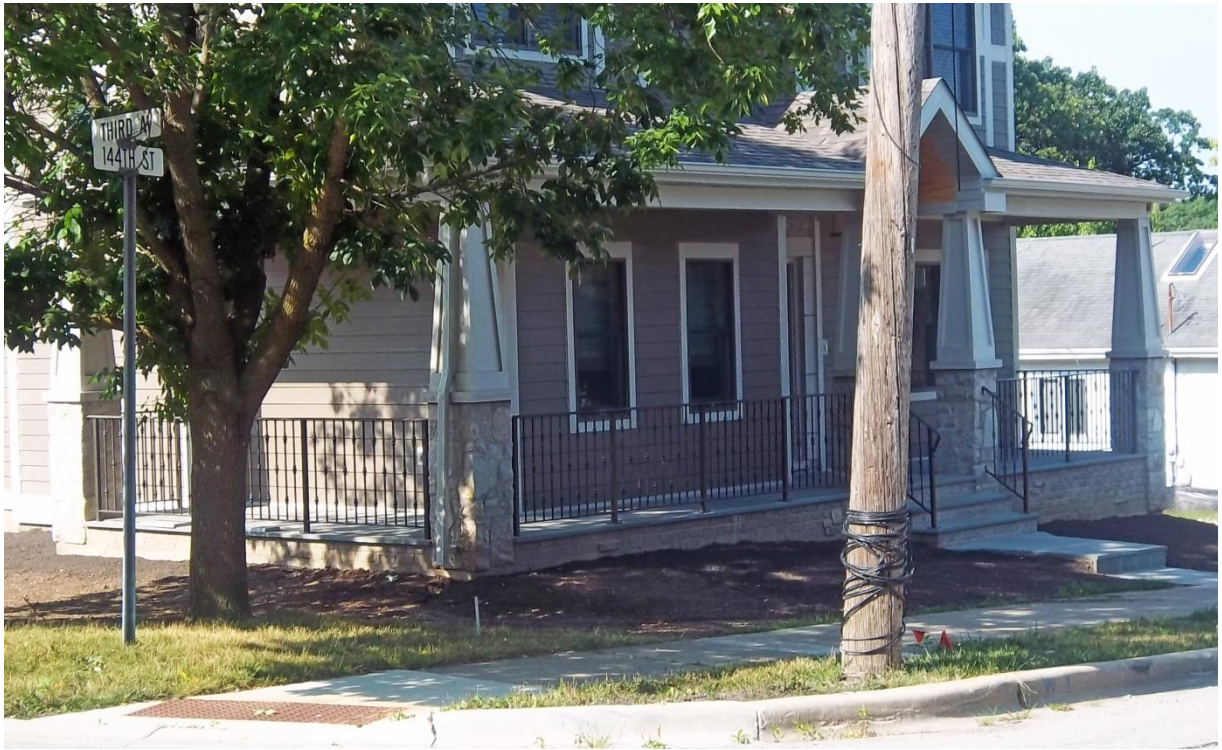
The 'fine' nature of the railing material, color, and design is lost in the mass of the homes attractive architecture. The appearance of the railing fades into the façade and almost makes the porch look incomplete.



The material and style of this railing is much more typical of new homes in Old Orland, and is reflective of the design approved by the original COA.



These photos are examples of the 'alternate solution' provided by staff in order to keep the metal material but change the design to make it more appropriate to the home architecture and Historic District standards.



A view of 9855 W. 144th.



A comparative view of 144th Place architecture as an example of Old Orland policies at work.