



**BKD NATIONAL PUBLIC SECTOR GROUP**

**VILLAGE OF ORLAND PARK**

PRESENTED BY: **BKD, LLP**

**BKD**<sup>LLP</sup>  
CPAs & Advisors

# OUR GOALS FOR TODAY

**1**

Choosing the Right Advisor

**5**

BKD, LLP at a Glance

**2**

Issues, Challenges & Opportunities

**6**

**The BKD Experience:  
Unmatched Client Service**

**3**

How BKD Can Help

**7**

Why BKD is the Right Choice

**4**

Governmental Industry  
Commitment & Expertise

# CHOOSING THE RIGHT ADVISOR

- ▶▶ Many government organizations have turned to BKD to work with a firm that:
  - Completes services in an efficient & timely manner in accordance with established deadlines
  - Has deep national & local expertise
  - Provides industry developments & proactive planning ideas through regular scheduled meetings (no surprises approach)
  - Can provide a smooth transition by investing time & high level industry resources
  - Has a client-centered approach
  - Takes you & your investment seriously

# ISSUES, CHALLENGES & OPPORTUNITIES



- ▶▶ Ongoing budgetary concerns & doing more with less – uncertainty with the State
- ▶▶ Maintaining public trust & fiscal transparency
- ▶▶ Increased regulatory pressures
- ▶▶ Rising infrastructure & health care costs
- ▶▶ Increasing technology relevance & security risks

# SOLUTIONS – HOW BKD CAN HELP

- ▶▶ Frequent communication from accessible advisors who understand your regulatory environment & budgetary concerns
  - Available to meet with your Board before and during audit
  - Present audit results to your Board at conclusion
  - We welcome dialogue with management and the Board throughout the year
- ▶▶ Best practices recommendations for operational efficiencies & strengthened internal controls



# SOLUTIONS – HOW BKD CAN HELP



- ▶▶ Technical capabilities & talent
  - Government specialization
  - Uniform Guidance expertise
- ▶▶ Strong cultural commitment to **The BKD Experience: Unmatched Client Service**
- ▶▶ Extensive quality control measures
- ▶▶ Value for your investment beyond the basic service approach
- ▶▶ Proactive industry thought leadership
  - CPE opportunities via **BKD Thoughtware®**

# BKD SMOOTH TRANSITION APPROACH

## 9 STEP PROCESS

- ▶▶ Meet with leadership
- ▶▶ Greet staff and introduce our team
- ▶▶ Understand by reviewing prior year
- ▶▶ Collaborate with management team
- ▶▶ Delegate and work through audit process and assignments
- ▶▶ Develop tailored approach
- ▶▶ Plan schedule and communicate key dates
- ▶▶ Protect and safeguard from the start to finish
- ▶▶ Delivery and meet commitments



# HOW BKD CAN HELP – A TAILORED AUDIT APPROACH

## OUR FIVE-PHASE APPROACH TO FINANCIAL STATEMENT AUDITS

1 » Planning

2 » Risk Assessment

3 » Fieldwork, Testing & Further Audit Procedures

4 » Report & Communications Delivery

5 » Presentation

- ▶▶ Audit focuses on your areas of risk
- ▶▶ Assess internal controls
  - Questionnaires
  - Identification & walkthrough of key controls
  - Review of IT controls
- ▶▶ What we will expect from you
  - Timely communication throughout the year
  - Accurate information provided within mutually agreed-upon time frames
  - Assistance with document requests
- ▶▶ What you should expect from BKD
  - Avoidance of unwanted surprises
  - Risk issues addressed first
  - Proactive communication



# DON'T JUST TAKE OUR WORD FOR IT

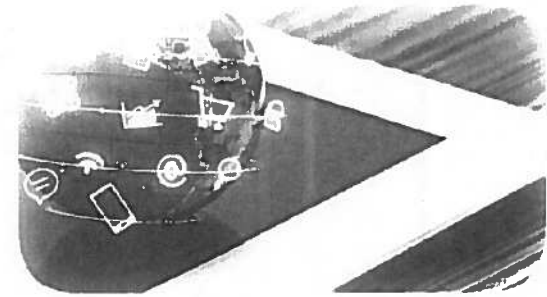


“The transition went smoothly as the engagement partner and his team made us feel comfortable with new methods, stayed within the established timelines and shared clear process communications with minimal interruptions to my staff. The BKD team introduced us to BKDconnect which we found easy to learn and features a reassuring file transfer and tracking process.”

Kimberly Auchstetter  
Finance Director/Treasurer  
Village of New Lenox, Illinois

# BKD connect

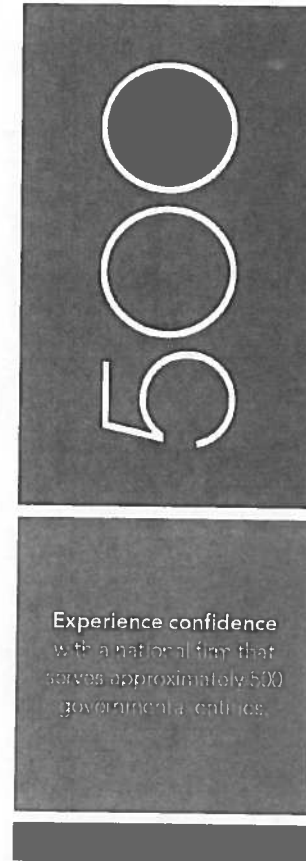
Keeping You Connected.



- ▶▶ BKDconnect is an innovative client portal designed to help conveniently connect you with BKD advisors throughout your audit.
- ▶▶ BKDconnect makes it easier to:
  - Upload, share & organize files
  - View & manage information & requests
  - Assign specific tasks to your employees & track progress
  - Manage engagement calendar to handle deadlines
  - Implement role-based access for increased security

# BKD NATIONAL GOVERNMENTAL GROUP

- ▶ Clients – Approximately 500 governmental entities nationwide
- ▶ Total Personnel – Approximately 335 professionals focus on governmental, not-for-profit & higher education clients
- ▶ Broad technical expertise to help you meet your strategic goals
- ▶ Best practice recommendations gained from working with hundreds of similar clients to help you make the most of every dollar



# BKD NATIONAL GOVERNMENTAL GROUP

## BKD National Governmental Group Service Areas



### AUDIT & ASSURANCE

Develop strong compliance programs and find solutions for tough issues



### TAX

Gain peace of mind with solid tax decisions and compliance strategies

#### Strategy & Sustainability

Expand your resources and achieve your mission, responsibly

#### Technology

Keep your vital systems and data safe

#### Operations Management & Outsourcing

Gain operational efficiency by controlling the ebb and flow of your business cycle

# BKD THOUGHTWARE: WEBINARS, ARTICLES & ALERTS

**BKD alerts**

**experience guidance**

With BKD Alerts, you'll experience round-the-clock convenience to those that help you improve performance and reduce risk.

National Health Care Group

**CAH Asses Qualifying for EHR Incentives**

The Centers for Medicare & Medicaid Services' interpretation of eligible costs for electronic health records (EHR) could make EHR implementation more difficult for critical access hospitals (CAHs).

**Read More**



**Register**

**Manage Your Account**



**experience connection**

Keep tabs on rapidly changing health care regulations with the app from BKD National Health Care Group



## BKD webinar series



**experience guidance**

Leverage the expertise of BKD advisors through our growing library of complimentary, industry-specific webinars.

### Risk Analysis Report - Presenting Key Tax Issues to Your Board

Date: Wednesday, November 9, 2011  
Time: 10:00 - 11:00 a.m. Central time

Assessing and understanding risks are important duties for boards and management. Overall tax risks directly impact your organization operationally, structurally and programmatically. Are you familiar with the current IRS compliance objectives? What key considerations should you be discussing with your board? Learn how to keep board members apprised of key tax changes with an annual tax review. Join BKD for a complimentary webinar that will tackle these questions and many more.

**Learning Objectives**

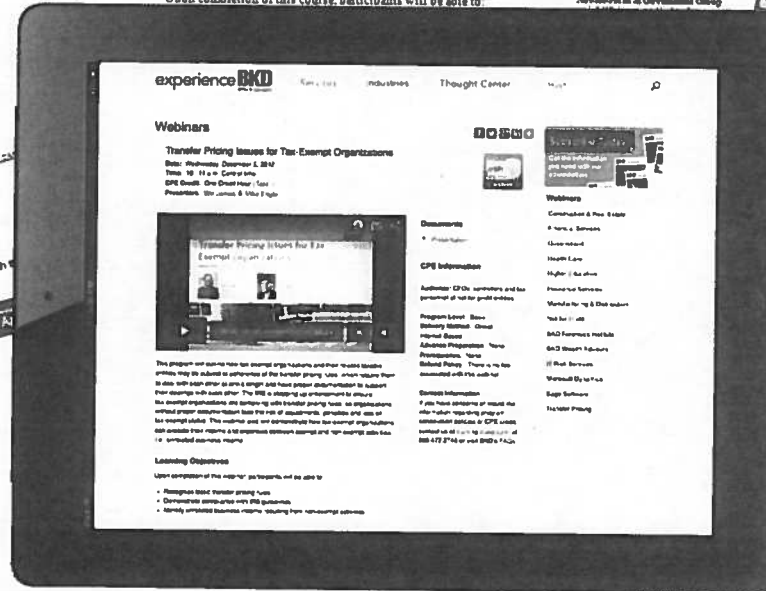
Upon completion of this course, participants will be able to:



This program is under review for CPE compliance.

#### The Presenter

Joyce Dubowich, a partner with BKD LLP, has more than 25 years of experience providing tax services to health care entities, colleges and universities and non-profits organizations. She serves as a tax leader for BKD National Health Care & Government Group.



## BKD insights



**experience variety**

With BKD Insights, you'll experience industry perspectives to help you make informed decisions.

### CMS Publishes 2012 IPPS Final Rule

The Centers for Medicare & Medicaid Services has published its final 2012 final rule related to the important prospective payment system (IPPS) as well as rate-of-increase limits for certain hospitals excluded from IPPS.

**Read More**

#### Upcoming Webinar

**Risk Analysis Report - Presenting Key Tax Issues to Your Board**  
Date: Wednesday, November 9, 2011  
Time: 10:00 - 11:00 a.m. Central time  
This program is under review for CPE credit.

#### Recent Insights

See an up-to-date report on the latest from members of BKD's success stories.

**Read More**

**Read More**

**Read More**

#### My Account

To manage your preferences for BKD publications, visit the My Account page.

#### Ice connection

Changing health care regulations with the BKD National Health Care Group



experience BKD

# COMMITMENT TO GOVERNMENTS – THOUGHT LEADERSHIP

## ▶▶ Recent Government Content BKD Thoughtware®

Includes CPE-eligible webinars and local office seminars



- || IRS Tax Exempt & Government Entities 2018 Work Plan
- || GASB Publishes Exposure Draft on Conduit Debt Obligations
- || Tips for a Smoother Financial Closing Process
- || Changes to Reporting of Fiduciary Activities
- || GASB's New Lease Standard
- || Protecting State & Local Governments from Critical Cyber Threats
- || Implementing GASB 75: What You Need to Know

# COMMITMENT TO INDUSTRY KNOWLEDGE & INSIGHT

- ▶▶ Actively serve as participants, exhibitors, speakers & sponsors in state, regional & national industry associations
  - AICPA Government Audit Quality Center
  - Association of Government Accountants (AGA)
  - Government Finance Officers Association (GFOA) – Special Review Committee
  - Illinois CPA Society Government Report Review Committee
  - Illinois Municipal League (IML)
  - Illinois Government Finance Officers Association (IGFOA)



# REPRESENTATIVE GOVERNMENTAL CLIENTS - ILLINOIS

- ▶▶ Bensenville Fire Protection District
- ▶▶ Bloom Township
- ▶▶ Brookfield-North Riverside Water Commission
- ▶▶ Chicago Heights Park District
- ▶▶ City of Hickory Hills
- ▶▶ City of Highwood
- ▶▶ City of Oakbrook Terrace\*
- ▶▶ City of Park Ridge\*
- ▶▶ Decatur Public Schools
- ▶▶ DuPage Mayors and Managers Conference
- ▶▶ DuPage Township
- ▶▶ Glenside Public Library District
- ▶▶ Homewood-Flossmoor Park District\*
- ▶▶ Illinois Gaming Board
- ▶▶ Illinois Park and Recreation Association
- ▶▶ Indian Trails Public Library District
- ▶▶ Metropolitan Mayors Caucus
- ▶▶ Morton College
- ▶▶ Mount Zion School District
- ▶▶ State Universities Retirement System
- ▶▶ Teachers Retirement System of Illinois
- ▶▶ University of Illinois Chicago Dept of Athletics
- ▶▶ Village of Berkeley\*
- ▶▶ Village of Bloomingdale\*
- ▶▶ Village of Bolingbrook
- ▶▶ Village of Bradley
- ▶▶ Village of Burr Ridge\*
- ▶▶ Village of Chicago Ridge
- ▶▶ Village of Downers Grove\*
- ▶▶ Village of Hainesville
- ▶▶ Village of LaGrange Park\*
- ▶▶ Village of Mundelein\*
- ▶▶ Village of New Lenox\*
- ▶▶ Village of River Forest\*
- ▶▶ Village of Steger
- ▶▶ Village of Willowbrook\*
- ▶▶ Will County Governmental League\*

*All representative clients are proprietary and confidential*



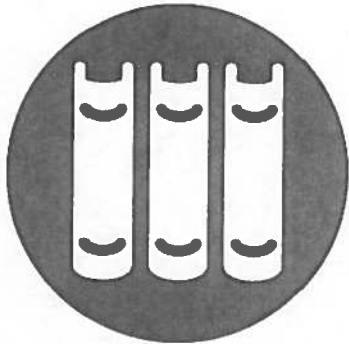
# WHAT OUR CLIENTS HAVE TO SAY



“Park Ridge experienced significant staffing change due to a unique combination of retirements and resignations. This departure also resulted in the loss of institutional knowledge as all accounting staff departed. The BKD team was a life-line – they helped guide us as we dug into and fine-tuned our procedures and internal controls. They are a valuable resource and have helped us improve the way Park Ridge approaches its operations. I can’t speak highly enough of our engagement partner and his crew.”

Andrea Lamberg  
Finance Director  
City of Park Ridge, Illinois

# FORM 990 TAX SERVICES



- ▶▶ BKD prepares 1,560 Form 990s annually
- ▶▶ BKD's review includes looking for common errors, red flags, & future suggestions
- ▶▶ Procedures for preparation & reviews allow for customization
- ▶▶ BKD 990connect
  - Side by side comparison of prior year information
  - Monitor your progress & assign tasks
  - View questions only that are applicable
  - Gain quick reference to definitions, IRS guidance, & BKD insights
  - Access help screens & video tutorials

# WHAT YOU CAN COUNT ON FROM BKD

## You will be a key client for BKD

- BKD has the experience to serve you at the highest levels
- Professionals deeply experienced in not-for-profits, single audits, education, & healthcare industries
- Proactive communication throughout the year
  - Periodic meetings designed to stay on top of your issues, challenges & changes
  - Regular communication on important topics such as
    - Accounting issues & tax regulation changes
    - Implementation of new standards
    - Internal controls & risk assessment



**You can count on Unmatched Client Service**

# WHAT SETS US APART

- Fresh look from an experienced team
- Significant engagement executive involvement, with a client-centered approach to help prevent service surprises
- Experience a smooth & professional transition
- Receive proactive & timely communication
- Industry & client-specific audit approach
- Dedicated public sector consulting practice
- National & local government expertise
- Experience our commitment to Unmatched Client Service
- You will be a priority client to BKD



Integrity First



True Expertise



Professional Demeanor



Responsive Reliability



Principled Innovation

**QUESTIONS?**

**BKD**  
CPAs & Advisors

Scott C. Termine, CPA // Partner  
stermine@bkd.com // 630.282.9621

John F. Cutrera, CPA // Director  
jcutrera@bkd.com // 630.282.9522

Britney Smart, CPA // Senior Associate  
bsmart@bkd.com // 630.282.9651

# THANK YOU!

**BKD**  
CPAs & Advisors