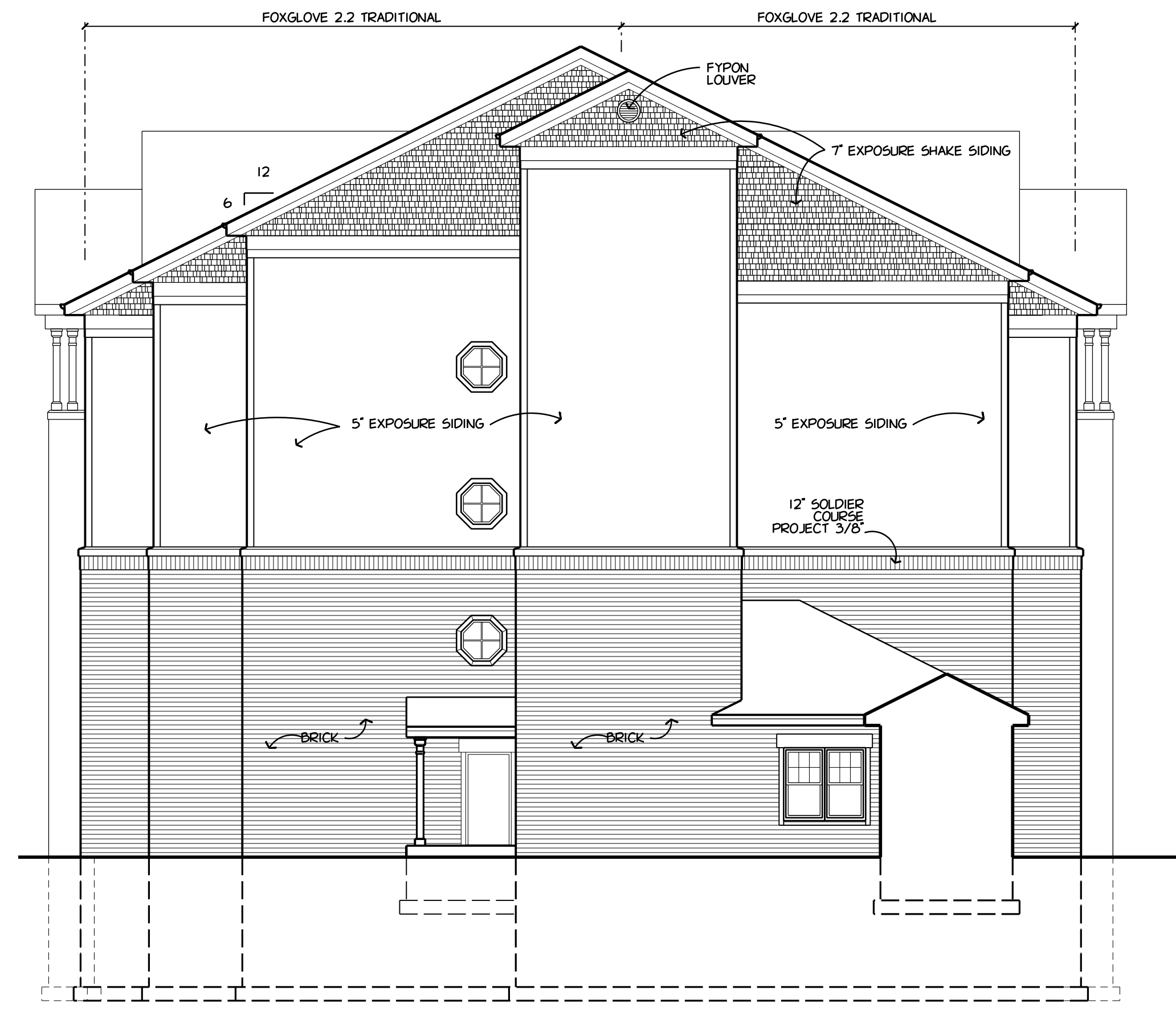


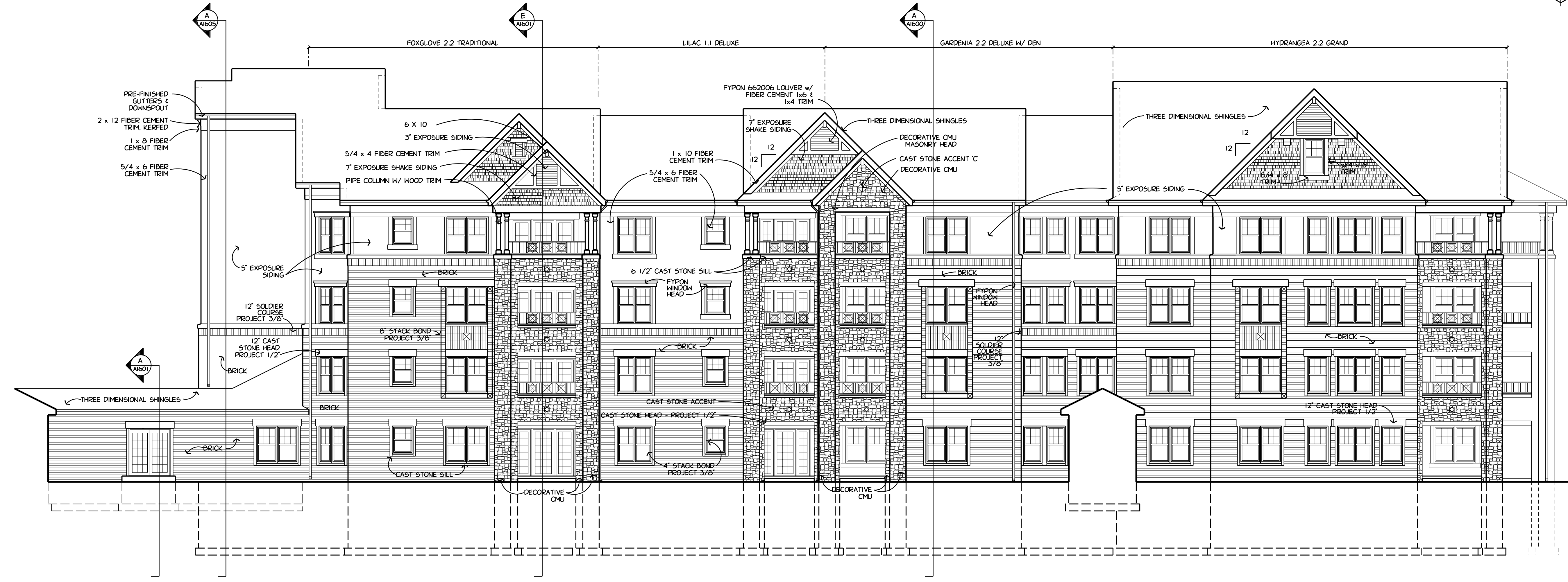


Architecture  
 Engineering  
 Planning

REVISIONS



ELEVATION  
 1/8" = 1'-0"  
 2 A1501

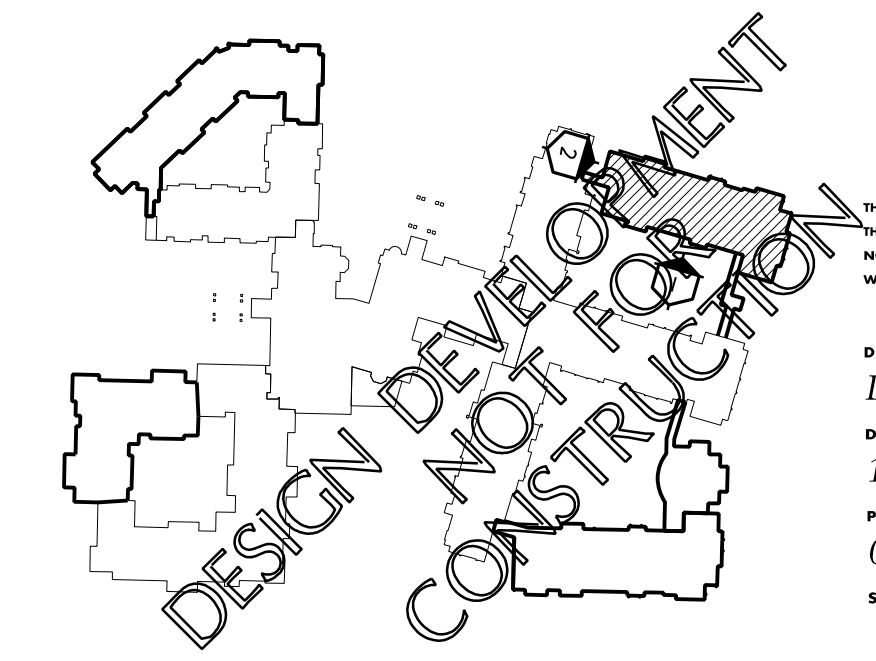


5' EXPOSURE SIDING	LAP SIDING PER SECTION 07462
7' EXPOSURE SIDING	SHINGLE SIDING PER SECTION 07462

**GENERAL NOTES**

- PROVIDE SPLASH BLOCKS MADE WITH ROCKS AT ALL DOWNSPOUTS WHICH SPILL ONTO GRADE - MATCH EXISTING.
- 6 1/2" CAST STONE SILL - VERIFY HEIGHT WITH APPROVED WINDOW SHOP DRAWINGS
- ALL FIBER CEMENT TRIM TO BE PRIMED ALL SIDES.
- SEE SHEET A1500 FOR WINDOW SCHEDULE

ELEVATION  
 1/8" = 1'-0"  
 1 A1501



THIS DRAWING, ITS DESIGN CONCEPT AND ITS DETAILS ARE THE SOLE PROPERTY OF AG ARCHITECTURE, INC. AND SHALL NOT BE COPIED IN ANY FORM OR MANNER WITHOUT WRITTEN AUTHORIZATION OF ITS DESIGNER/CREATOR

DRAWN BY  
 DRN  
 DATE  
 18 DEC 2009  
 PROJECT  
 070601  
 SHEET NO.