



No-mow fescue grass in medians of  
LaGrange Road and 159<sup>th</sup> Street

6.16.25

# Purpose of Brief:

- History/Cost of Project
- Do we like the different aesthetically look of no mow fescue in pilot area on LaGrange Road?
- Do we continue the project after pilot area in future budgets?
- Do we scrap this project immediately and revert to regular weekly mowing?



# Why convert from traditional lawn to no mow fescue?

Fescue grass generally grows to 12 to 15 inches tall and fall over in undulating wave-like mounds about 6 inches high.

(It does requires cutting 3 times a year versus weekly.)

- **Ecological Alternative:**
  - Needs minimal watering (drought tolerance)
  - Is highly salt tolerant and resists most turf grasses diseases
  - Does not require fertilization
  - Reduces weed growth
  - Thrives in full sun to partial shade
- **Cost:** Reduce amount of times maintenance crews must cut.
- **Safety:** Reduce number of times personnel to be in median cutting grass.

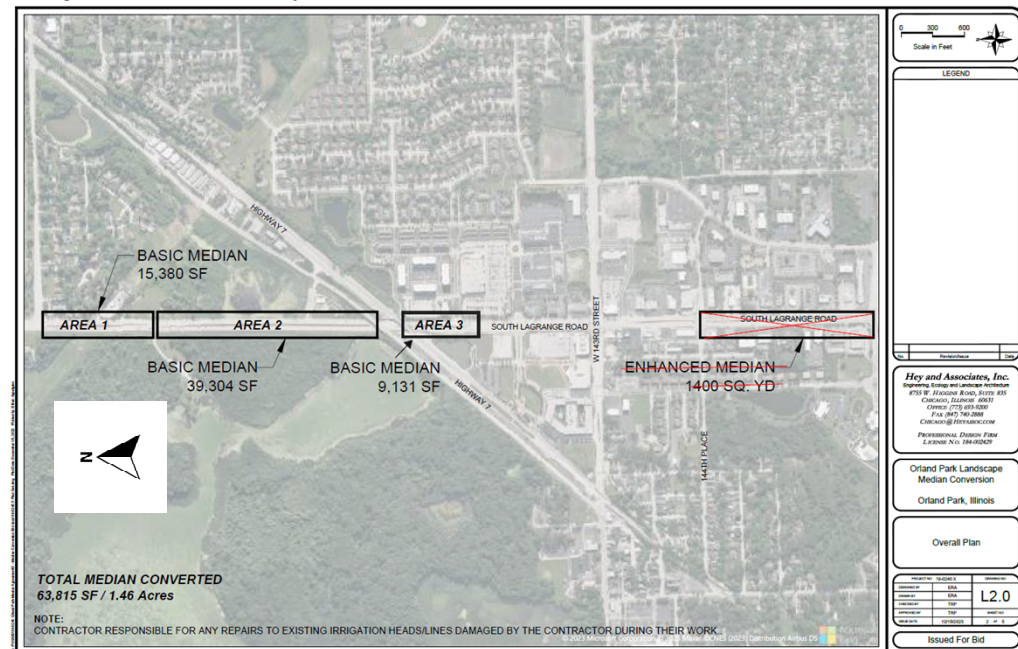


# Planning/Test Pilot Area

- **Planning:** '23 Hey and Associates estimated cost to convert LaGrange Medians (131<sup>st</sup> to 171<sup>st</sup> Street)
  - Once complete on LaGrange Rd, move to 159<sup>th</sup> medians.
- **Test Pilot Area:** Convert 1.46 acres from 135<sup>th</sup> St to just south of 141<sup>st</sup> St. (approx. 0.75 linear miles)
  - An area south of 143<sup>rd</sup> containing raised planter beds was decided against due to logistical constraints.

Budget Estimate for entire LaGrange Rd  
**\$371,058**

LaGrange Road Median Turf Conversion Project- Phase 1 - As Built Plans



# Design/Construction Costs

	<u>Budget</u>	<u>Cost</u>
• <b>A/E Design Services:</b> '23 - '25: Hey & Associates <ul style="list-style-type: none"><li>• Included planning, permitting with IDOT, estimating, construction documents, construction administration</li></ul>	\$15,000	\$10,865.33
• <b>Board Approval:</b> On February 19, 2024, Village Board approved 2024-0090 for the test pilot area	\$65,000	\$53,790.00*
• <b>Construction:</b> '24-'25: Semmer Landscape	Final Cost	\$49,875.00

\* Not to exceed \$53,790.00 (\$48,900 +10% contingency \$4,890)



# Return of Investment (ROI) Analysis

- **Mowing Method:** LaGrange Road from 131st St to 179th St contains approximately 8.87 acres by contractor.
  - Annually \$26/acre/week x 30 weeks a year
  - - Future mowing remain: \$26/acre x 3 times a year
- **Test Pilot:** 1.5 acres conversion to fescue and 1 acre cost (\$49,875 / 1.5).
- **Remaining Area:** Subtracting 1.5 acres from 8.87 mowable acres
  - 7.37 acres remain x test pilot cost of 1 acre
- **Estimated A/E cost:** For IDOT permits and contract administration (x 1 yr)
- **ROI: 39 years**
  - $(245,053 + 2,500 / 6,344)$

## Cost per Year

\$6,919 in FY25

-\$575 per year

\$6,344 mowing savings

\$49,875

\$33,250

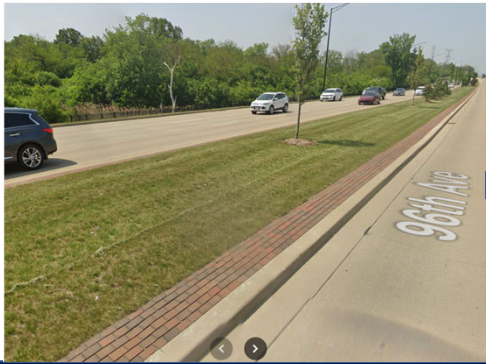
\$245,053

\$2,500

# Appearance Considerations:

- LaGrange and 159<sup>th</sup> Streets are gateways into the Village.
- 1<sup>st</sup> year establishment period often contain patchy areas.
- 2<sup>nd</sup> year growth is more uniform and currently looking better than expected.
- 3<sup>rd</sup> year is anticipated to look like last photo

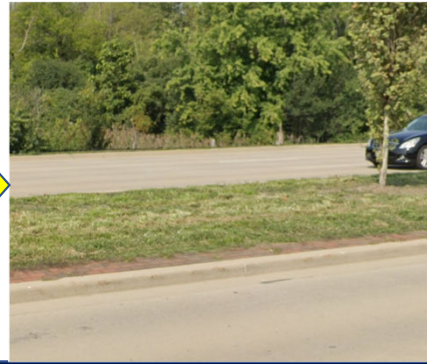
Previous grass  
May 2023



Seeding Period  
May 2024



Establish Year  
Sept 2024



2nd Year  
June 2025



Projected look  
2026



# Questions?

## **Request Decision**

- Do we like the different aesthetically look of low mow fescue in pilot area on LaGrange Road?
- Do we continue the project after pilot area in future budgets?
- Do we scrap this project immediately and revert to regular weekly mowing?