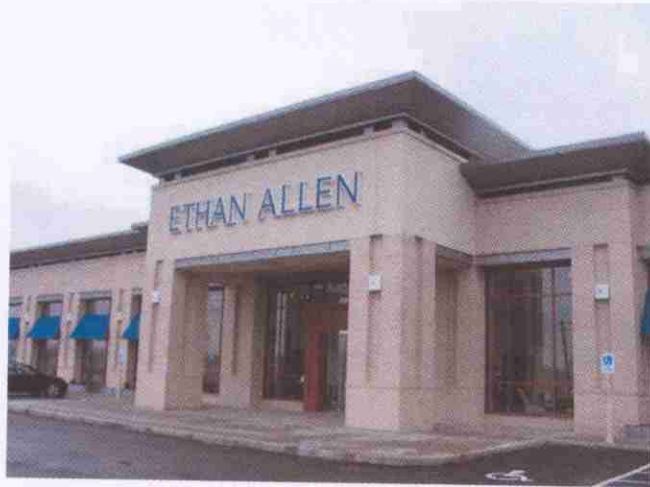


**ETHAN ALLEN
AT SEVENTY-FIVE**
**ORLAND PARK
ILLINOIS**



FRONT BUILDING DETAIL



CORNER BUILDING DETAIL



CORNER BUILDING DETAIL



ETHAN ALLEN RENDERING



BACK BUILDING DETAIL

ELEV. RENDERING & BUILDING DETAILS

1" = 20'



LINDEN GROUP

ARCHITECTURE
LAND PLANNING
INTERIOR ARCHITECTURE
LANDSCAPE ARCHITECTURE

900 RIDGE ROAD
HOMERWOOD, ILLINOIS 60438
P: 708.799.4400 F: 708.799.4434
WWW.LINDENGROUPINC.COM



ETHAN ALLEN
HOME INTERIORS

LAGESTEE-MULDER
17005 Westview Ave,
South Holland, IL 60473
Phone (708) 333-8338
Fax (708) 333-0080

DATE DESCRIPTION

DATE

68-07

PROJECT NUMBER

FILE NUMBER

8-15-07

DATE

jlm

DRAWN BY

FINAL REVIEW

COPYRIGHT - LINDEN GROUP INC.
ALL RIGHTS RESERVED.
NO PART OF THIS DOCUMENT IS TO BE REPRODUCED OR TRANSMITTED IN ANY FORM OR BY ANY MEANS, ELECTRONIC OR MECHANICAL, INCLUDING PHOTOCOPYING, RECORDING, OR BY ANY INFORMATION STORAGE AND RETRIEVAL SYSTEM, WITHOUT THE WRITTEN PERMISSION OF LINDEN GROUP INC.

CIVIL

SHEET NAME

C3

SHEET

SHEET 3 OF 3