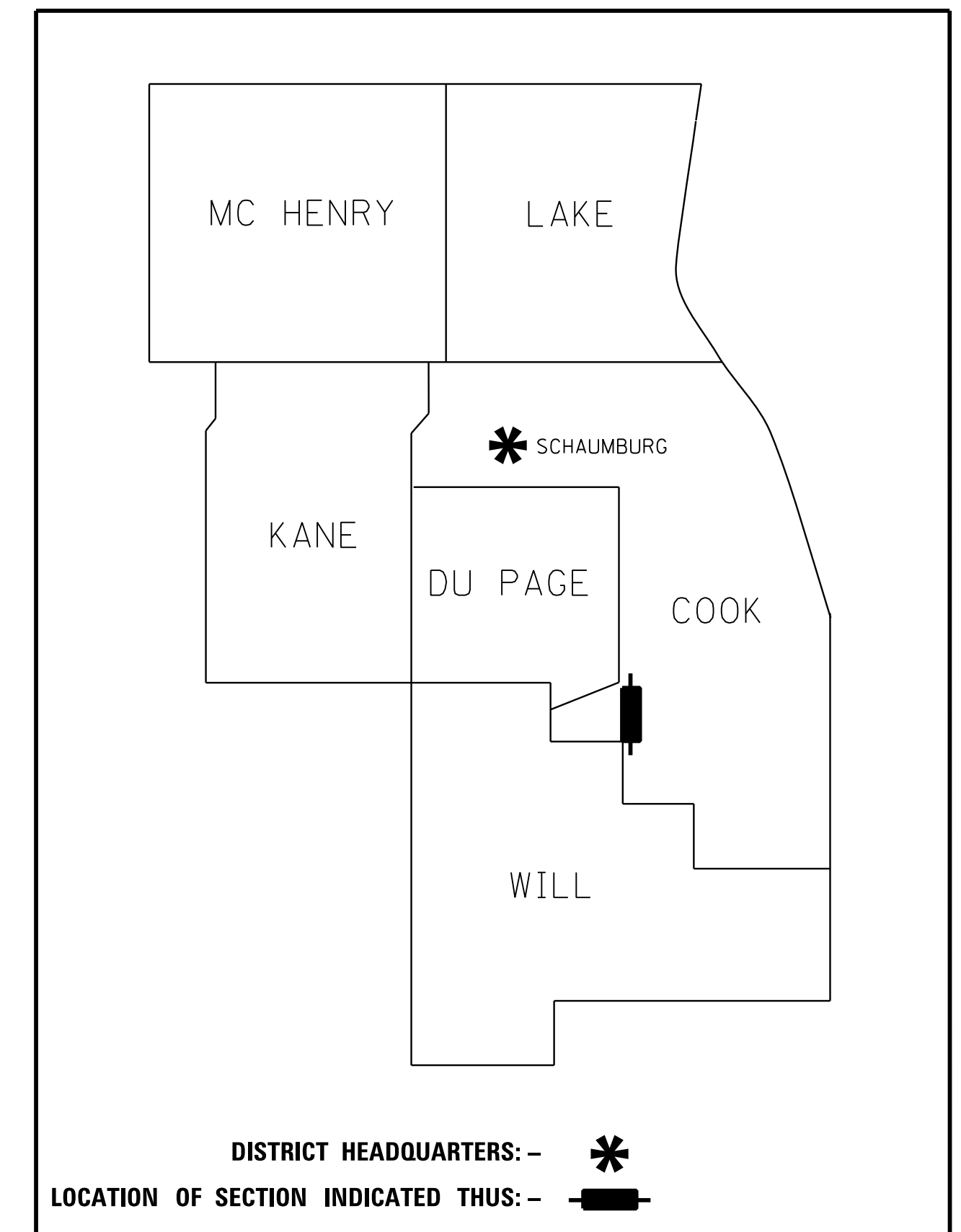


**STATE OF ILLINOIS
DEPARTMENT OF TRANSPORTATION
DIVISION OF HIGHWAYS**

PLAT OF HIGHWAYS

**ROUTE: RAVINIA AVENUE
SECTION: 12-00069-00-CH
COUNTY: COOK
LIMITS: AT 147th STREET
JOB NO.: R-55-001-97**

PARCEL NUMBER	OWNER	SHEET NUMBER	PROPERTY ACQUIRED BY
0001	14216 SC & B, LLC., AN ILLINOIS LIMITED LIABILITY COMPANY	2, 3	
0001TE	14216 SC & B, LLC., AN ILLINOIS LIMITED LIABILITY COMPANY	2, 3	



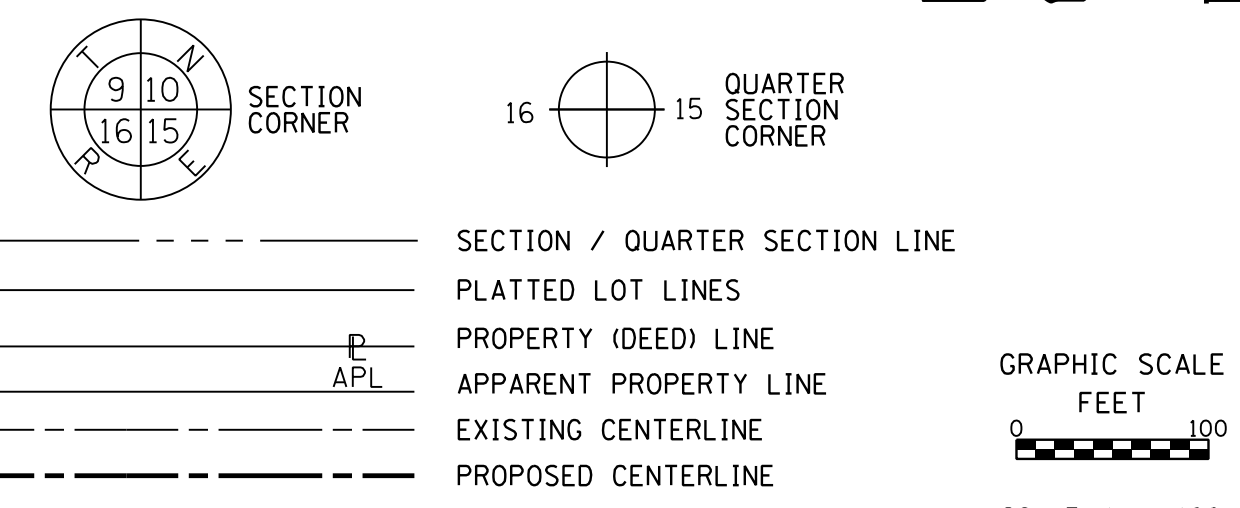
**PRINTED BY THE AUTHORITY
OF THE STATE OF ILLINOIS**



LOCATION MAP

GROSS LENGTH = 3191.58 FT. = 0.604 MILE, RAVINIA AVENUE
GROSS LENGTH = 908.65 FT. = 0.172 MILE, 147th STREET
NET LENGTH = 4100.23 FT. = 0.776 MILE

LEGEND



SECTION / QUARTER SECTION LINE
 PLATTED LOT LINES
 PROPERTY (DEED) LINE
 APPARENT PROPERTY LINE
 EXISTING CENTERLINE
 PROPOSED CENTERLINE
 EXISTING RIGHT OF WAY LINE
 PROPOSED RIGHT OF WAY LINE
 EXISTING EASEMENT
 PROPOSED EASEMENT
 EXISTING ACCESS CONTROL LINE
 PROPOSED ACCESS CONTROL LINE
 MEASURED DIMENSION
 COMPUTED DIMENSION
 RECORDED DIMENSION
 EXISTING BUILDING

GRAPHIC SCALE
 0 FEET 100
 SCALE: 1" = 100'

○ IRON PIPE OR ROD FOUND ⊕ "MAG" NAIL SET
 + CUT CROSS FOUND OR SET ● 5/8" REBAR SET
 ■ STAKING OF PROPOSED RIGHT OF WAY. SET DIVISION OF HIGHWAYS SURVEY MARKER TO MONUMENT THE POSITION SHOWN. IDENTIFIED BY INSCRIPTION DATA AND SURVEYORS PROFESSIONAL NUMBER.
 ■ M STAKING OF PROPOSED RIGHT OF WAY IN CULTIVATED AREAS. BURIED 5/8 INCH REBAR 20 INCHES BELOW GROUND TO MARK FUTURE SURVEY MARKER POSITION. IDENTIFIED BY COLORED PLASTIC CAP BEARING SURVEYORS PROFESSIONAL NUMBER.
 ⊙ PERMANENT SURVEY MARKER, IDOT STD. 2135 (TO BE SET BY OTHERS)
 □ RIGHT OF WAY STAKING PROPOSED TO BE SET.

NOTES:
 ALL DIMENSIONS ARE MEASURED UNLESS OTHERWISE SPECIFIED.
 COORDINATES, BEARINGS & DISTANCES SHOWN HEREON REFERENCE THE ILLINOIS STATE PLANE COORDINATE SYSTEM, EAST ZONE, NORTH AMERICAN DATUM OF 1983 (NAD83) (2011 ADJUSTMENT) "GRID"
 ALL MEASURED AND CALCULATED DISTANCES ARE "GRID" NOT "GROUND". TO OBTAIN GROUND DISTANCES, DIVIDE GRID DISTANCES SHOWN BY THE COMBINATION FACTOR OF 0.999966 PER NGS PID'S AJ2773 AND D10733.
 AREA SHOWN ON THIS PLAT ARE GROUND.

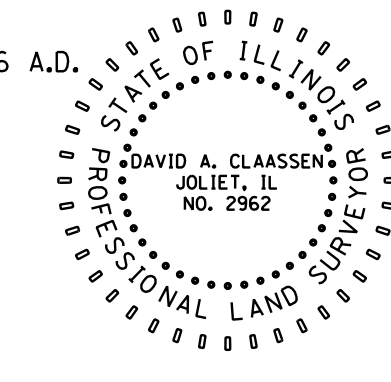
STATE OF ILLINOIS)
) SS
 COUNTY OF WILL)

THIS IS TO CERTIFY THAT WE, CLAASSEN, WHITE & ASSOCIATES, P.C., AN ILLINOIS PROFESSIONAL DESIGN FIRM LAND SURVEYING CORPORATION NUMBER 184-004039, HAVE SURVEYED THE PLAT OF HIGHWAYS SHOWN HEREON IN SECTION 9, TOWNSHIP 36 NORTH, RANGE 12 EAST OF THE THIRD PRINCIPAL MERIDIAN, COOK COUNTY, THAT THE SURVEY IS TRUE AND COMPLETE AS SHOWN TO THE BEST OF MY KNOWLEDGE AND BELIEF, THAT THE PLAT CORRECTLY REPRESENTS SAID SURVEY, THAT ALL MONUMENTS FOUND AND ESTABLISHED ARE OF PERMANENT QUALITY AND OCCUPY THE POSITIONS SHOWN THEREON AND THAT THE MONUMENTS ARE SUFFICIENT TO ENABLE THE SURVEY TO BE RETRACED. THIS SURVEY CONFORMS TO THE CURRENT ILLINOIS MINIMUM STANDARDS FOR A BOUNDARY SURVEY. MADE FOR THE DEPARTMENT OF TRANSPORTATION, STATE OF ILLINOIS.

DATED AT JOLIET, ILLINOIS THIS ____ DAY OF _____, 2016 A.D.

PRELIMINARY _____ VICE PRESIDENT

DAVID A. CLAASSEN
 ILLINOIS PROFESSIONAL LAND SURVEYOR NO. 035-002962
 LICENSE EXPIRES NOVEMBER 30, 2016
 THIS PROFESSIONAL SERVICE CONFORMS TO THE CURRENT ILLINOIS MINIMUM STANDARDS FOR A BOUNDARY SURVEY.



CWA SURVEY
CLAASSEN, WHITE & ASSOCIATES, P.C.
LAND SURVEYORS
 121 AIRPORT DRIVE, UNIT 1, JOLIET, ILLINOIS 60431
 (815) 744-3720 cclaassenwhite@cwasurevey.com
 CWA Job #6017

PLAT OF HIGHWAYS
VILLAGE OF ORLAND PARK
DEPARTMENT OF TRANSPORTATION
RAVINA AVENUE

LIMITS: AT 147th STREET COUNTY: COOK
 SECTION: 12-00069-00-CH JOB NO.: R-55-001-97
 STA. 10+00.00 TO STA. 42+00.00
 SCALE: 1" = 100' SHEET 3 OF 3 SHEETS

VILLAGE OF ORLAND PARK
14700 S. RAVINIA AVE.
ORLAND PARK, ILLINOIS 60462

PRINTING DATE: JULY 25, 2016 JLS /Microstation/6017 Sheet.dgn

PROPOSED RAVINA AVENUE
 CURVE DATA CURVE P.RAV.1-1
 PI STA. = 21+28.80
 Δ = 28° 13' 20" (LT)
 D = 12° 43' 57"
 R = 450.00'
 T = 113.13'
 L = 221.66'
 E = 14.00'
 E = 5.01'

PROPOSED RAVINA AVENUE
 CURVE DATA CURVE P.RAV.1-2
 PI STA. = 22+48.05
 Δ = 02° 43' 40" (LT)
 D = 12° 43' 57"
 R = 450.00'
 T = 10.71'
 L = 21.42'
 E = 0.13'

PROPOSED RAVINA AVENUE
 CURVE DATA CURVE P.RAV.1-3
 PI STA. = 23+22.30
 Δ = 09° 01' 26" (LT)
 D = 19° 05' 55"
 R = 300.00'
 T = 23.67'
 L = 47.25'
 E = 0.93'

PROPOSED RAVINA AVENUE
 CURVE DATA CURVE P.RAV.1-4
 PI STA. = 24+22.12
 Δ = 37° 23' 42" (RT)
 D = 63° 39' 43"
 R = 90.00'
 T = 30.46'
 L = 58.74'
 E = 5.01'

PROPOSED RAVINA AVENUE
 CURVE DATA CURVE P.RAV.1-5
 PI STA. = 26+14.35
 Δ = 04° 52' 00" (RT)
 D = 19° 07' 50"
 R = 299.50'
 T = 12.73'
 L = 25.44'
 E = 0.27'

PROPOSED RAVINA AVENUE
 CURVE DATA CURVE P.RAV.1-6
 PI STA. = 26+84.10
 Δ = 04° 52' 00" (RT)
 D = 19° 07' 50"
 R = 299.50'
 T = 12.73'
 L = 25.44'
 E = 0.27'

PROPOSED 147th STREET
 CURVE DATA CURVE P.147-1-1
 PI STA. = 101+50.93
 Δ = 34° 41' 12" (RT)
 D = 63° 39' 43"
 R = 90.00'
 T = 33.97'
 L = 64.97'
 E = 6.20'

PROPOSED 147th STREET
 CURVE DATA CURVE P.147-1-2
 PI STA. = 103+36.65
 Δ = 37° 41' 13" (LT)
 D = 63° 39' 43"
 R = 90.00'
 T = 30.71'
 L = 59.20'
 E = 5.10'

PROJECT COORDINATES
 ILLINOIS STATE PLANE, EAST ZONE, NAD83 (2011)

COORDINATE TABLE ~ RAVINIA AVENUE

PT. NO.	STATION	OFFSET	NORTHING	EASTING
299	10+00.00	0.00' RT.	1,804,226.3534	1,114,414.6224
300	10+49.93	0.00' RT.	1,804,276.2688	1,114,413.4115
301	13+51.71	0.00' RT.	1,804,578.0332	1,114,410.2517
302	14+02.76	0.00' RT.	1,804,628.2146	1,114,419.6218
303	14+53.77	0.00' RT.	1,804,677.2646	1,114,433.6381
304	15+16.57	0.00' RT.	1,804,735.1801	1,114,457.9007
305	20+15.68	0.00' RT.	1,805,172.3419	1,114,698.7396
307	22+37.34	0.00' RT.	1,805,383.9995	1,114,756.5994
309	22+58.76	0.00' RT.	1,805,405.4218	1,114,756.5298
310	22+98.63	0.00' RT.	1,805,445.2782	1,114,755.4514
312	23+45.88	0.00' RT.	1,805,492.2139	1,114,750.4671
313	23+91.66	0.00' RT.	1,805,537.2148	1,114,742.0669
276	24+50.40	0.00' RT.	1,805,594.3387	1,114,750.2211
277	25+80.38	0.00' RT.	1,805,723.4392	1,114,735.1412
279	26+45.35	0.00' RT.	1,805,785.7415	1,114,747.7698
280	26+71.37	0.00' RT.	1,805,811.4266	1,114,743.5994
282	26+96.81	0.00' RT.	1,805,836.6797	1,114,740.5930
284	27+10.32	0.00' RT.	1,805,850.1755	1,114,739.8708
287	28+43.03	0.00' RT.	1,805,982.8188	1,114,735.7717
288	29+20.80	0.00' RT.	1,806,060.5838	1,114,735.5962
289	30+23.16	0.00' RT.	1,806,162.9437	1,114,735.3577
315	41+91.58	0.00' RT.	1,807,330.8597	1,114,700.8181

PROJECT COORDINATES
 ILLINOIS STATE PLANE, EAST ZONE, NAD83 (2011)

COORDINATE TABLE ~ 147th STREET

PT. NO.	STATION	OFFSET	NORTHING	EASTING
290	100+00.00	0.00' RT.	1,805,606.5578	1,114,507.8646
291	101+22.82	0.00' RT.	1,805,640.1449	1,114,626.0067
293	101+77.31	0.00' RT.	1,805,638.7654	1,114,679.6463
294	103+05.94	0.00' RT.	1,805,660.1565	1,114,806.4824
296	103+65.13	0.00' RT.	1,805,643.5081	1,114,862.1847
298	109+08.65	0.00' RT.	1,805,664.4011	1,115,405.3014

REVISION DATE: / / REVISION MADE BY:

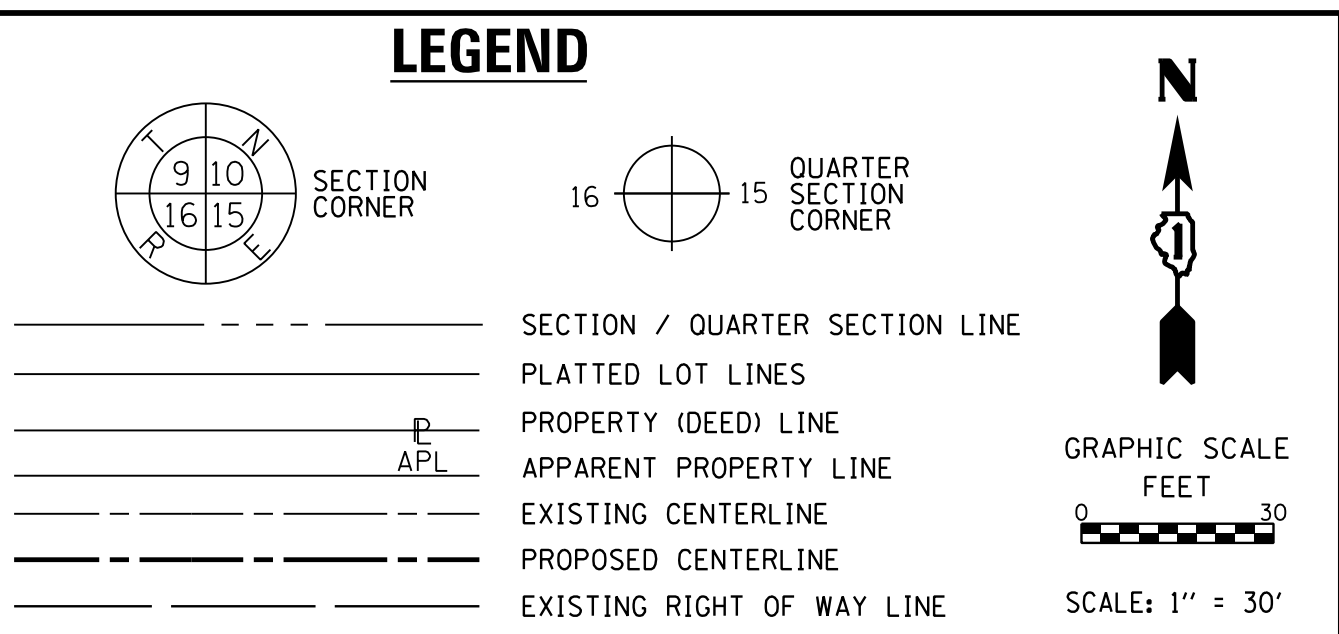
PART OF THE NORTHEAST QUARTER OF SECTION 9, TWP. 36 N., R. 12 E. OF THE 3RD. P.M., IN COOK COUNTY, ILLINOIS.

PARCEL NUMBER	OWNER	TOTAL HOLDING ACRES	PART TAKEN ACRES	AREA IN EXISTING R.O.W. ACRES	REMAINDER AREA ACRES	EASEMENT AREA		PARCEL INDEX NUMBER
						ACRES	SQUARE FEET	
0001	14216 SC & B, LLC., AN ILLINOIS LIMITED LIABILITY COMPANY	2.396	0.065		2.331	0.085	3,713	27-09-220-058

NE CORNER SECTION 9-36-12 FOUND BRASS DISC N: 1,808,305.2584 E: 1,115,328.0740

PROJECT COORDINATES ILLINOIS STATE PLANE, EAST ZONE, NAD83 (2011)

PT.NO.	STATION	OFFSET	NORTHING	EASTING
256	25+11.37	271.19' RT.	1,805,686.3637	1,115,012.5092
263	25+16.36	271.60' RT.	1,805,691.3607	1,115,012.3366
260	25+24.30	106.92' RT.	1,805,680.1476	1,114,847.8466
264	25+29.16	108.95' RT.	1,805,685.2060	1,114,849.3001
240	25+29.42	41.95' RT.	1,805,677.6891	1,114,782.7228
261	25+55.29	71.14' RT.	1,805,706.7715	1,114,808.7076
265	25+57.84	75.82' RT.	1,805,709.8529	1,114,813.0675
266	26+55.18	43.41' RT.	1,805,802.4033	1,114,789.0390
262	26+76.70	36.04' RT.	1,805,821.8370	1,114,778.4599
268	28+83.15	36.83' RT.	1,806,023.0218	1,114,772.5101
267	28+83.43	46.83' RT.	1,806,023.3174	1,114,782.5058



PROPOSED RAVINIA AVENUE
 CURVE DATA CURVE P_RAV_1-5
 PI STA. = 26+14.35
 I = 41° 21' 42" (LT)
 D = 63° 39' 43"
 R = 90.00'
 T = 33.97'
 L = 64.97'
 E = 6.20'
 P.C. STA. = 25+80.38
 P.T. STA. = 26+45.35

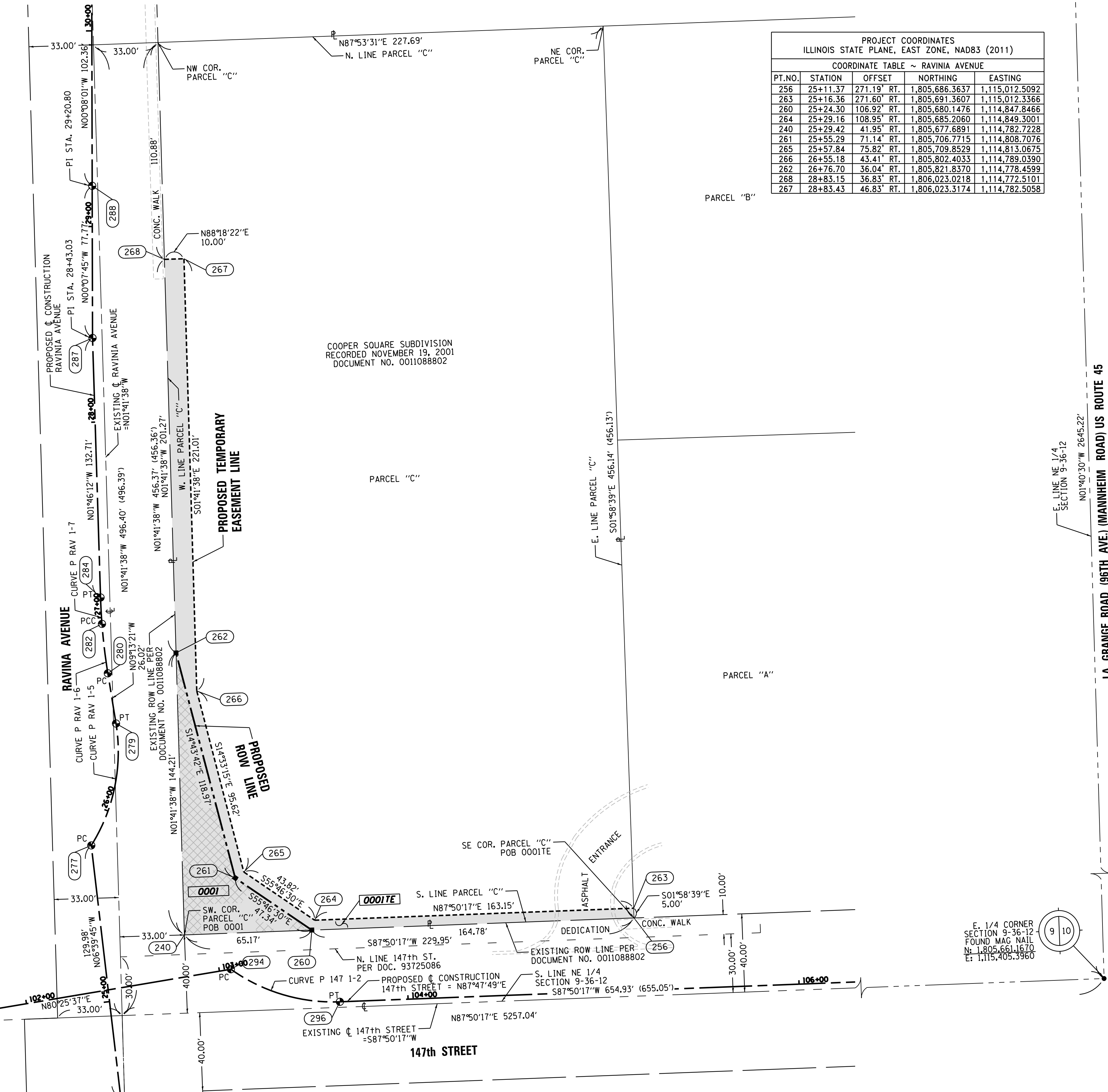
PROPOSED RAVINIA AVENUE
 CURVE DATA CURVE P_RAV_1-6
 PI STA. = 26+84.10
 I = 04° 52' 00" (RT)
 D = 19° 07' 50"
 R = 299.50'
 T = 12.73'
 L = 25.44'
 E = 0.27'
 P.C. STA. = 26+71.37
 P.C.C. STA. = 26+96.81

PROPOSED RAVINIA AVENUE
 CURVE DATA CURVE P_RAV_1-7
 PI STA. = 27+03.57
 I = 02° 35' 09" (RT)
 D = 19° 07' 50"
 R = 299.50'
 T = 6.76'
 L = 13.52'
 E = 0.076'
 P.C.C. STA. = 26+96.81
 P.T. STA. = 27+10.33

PROPOSED 147th STREET
 CURVE DATA CURVE P_147_1-2
 PI STA. = 103+36.65
 I = 37° 41' 13" (LT)
 D = 63° 39' 43"
 R = 90.00'
 T = 30.71'
 L = 59.20'
 E = 5.10'
 P.C. STA. = 103+05.94
 P.T. STA. = 103+65.13

PROJECT COORDINATES ILLINOIS STATE PLANE, EAST ZONE, NAD83 (2011)

PT.NO.	NORTHING	EASTING
277	1,805,723.4392	1,114,735.1412
279	1,805,785.7415	1,114,747.7698
280	1,805,811.4266	1,114,743.5994
282	1,805,836.6797	1,114,740.5930
284	1,805,850.1755	1,114,739.8708
287	1,805,982.8188	1,114,735.7717
288	1,806,060.5838	1,114,735.5962
294	1,805,660.1565	1,114,806.4824
296	1,805,643.5081	1,114,862.1847



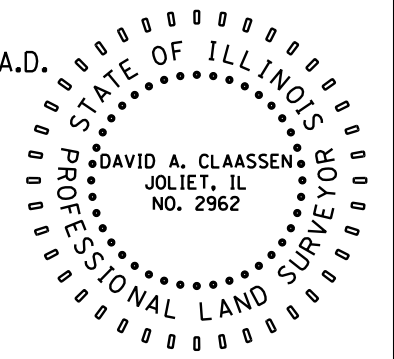
STATE OF ILLINOIS)
) SS
 COUNTY OF WILL)

THIS IS TO CERTIFY THAT WE, CLAASSEN, WHITE & ASSOCIATES, P.C., AN ILLINOIS PROFESSIONAL DESIGN FIRM LAND SURVEYING CORPORATION NUMBER 184-004039, HAVE SURVEYED THE PLAT OF HIGHWAYS SHOWN HEREON IN SECTION 9, TOWNSHIP 36 NORTH, RANGE 12 EAST OF THE THIRD PRINCIPAL MERIDIAN, COOK COUNTY, THAT THE SURVEY IS TRUE AND COMPLETE AS SHOWN TO THE BEST OF MY KNOWLEDGE AND BELIEF, THAT THE PLAT CORRECTLY REPRESENTS SAID SURVEY, THAT ALL MONUMENTS FOUND AND ESTABLISHED ARE OF PERMANENT QUALITY AND OCCUPY THE POSITIONS SHOWN THEREON AND THAT THE MONUMENTS ARE SUFFICIENT TO ENABLE THE SURVEY TO BE RETRACED. THIS SURVEY CONFORMS TO THE CURRENT ILLINOIS MINIMUM STANDARDS FOR A BOUNDARY SURVEY. MADE FOR THE DEPARTMENT OF TRANSPORTATION, STATE OF ILLINOIS.

DATED AT JOLIET, ILLINOIS THIS ____ DAY OF _____, 2016 A.D.

PRELIMINARY _____ VICE PRESIDENT

DAVID A. CLAASSEN
 ILLINOIS PROFESSIONAL LAND SURVEYOR NO. 035-002962
 LICENSE EXPIRES NOVEMBER 30, 2016
 THIS PROFESSIONAL SERVICE CONFORMS TO THE CURRENT ILLINOIS MINIMUM STANDARDS FOR A BOUNDARY SURVEY.



CWA SURVEY
 CLAASSEN, WHITE & ASSOCIATES, P.C.
 LAND SURVEYORS
 121 AIRPORT DRIVE, UNIT 1, JOLIET, ILLINOIS 60431
 (815) 744-3720 cclaassenwhite@cwasurevey.com
 CWA Job #6017

PLAT OF HIGHWAYS
VILLAGE OF ORLAND PARK
DEPARTMENT OF TRANSPORTATION
RAVINIA AVENUE

LIMITS: AT 147th STREET COUNTY: COOK
 SECTION: 12-00069-00-CH JOB NO.: R-55-001-97
 STA. 25+00.00 TO STA. 29+00.00
 SCALE: 1" = 30' SHEET 2 OF 3 SHEETS

VILLAGE OF ORLAND PARK
14700 S. RAVINIA AVE.
ORLAND PARK, ILLINOIS 60462

DOT USE ONLY

REVISION DATE: / / REVISION MADE BY:

PRINTING DATE: JULY 25, 2016 JLS /Microstation/6017 Sheet.dgn