

FACADE RENOVATION & ELEVATOR ADDITION - 14355 S. LaGrange Rd., Orland Park IL 60462

2nd Floor Exterior Wall Material Replacement, Ground Floor Storefront Windows/Doors Replacement and Elevator Addition to Existing 2 story Masonry Commercial Building.

PROJECT 0605

PROJECT No.: 0605

FACADE RENOVATION & ELEVATOR ADDITION

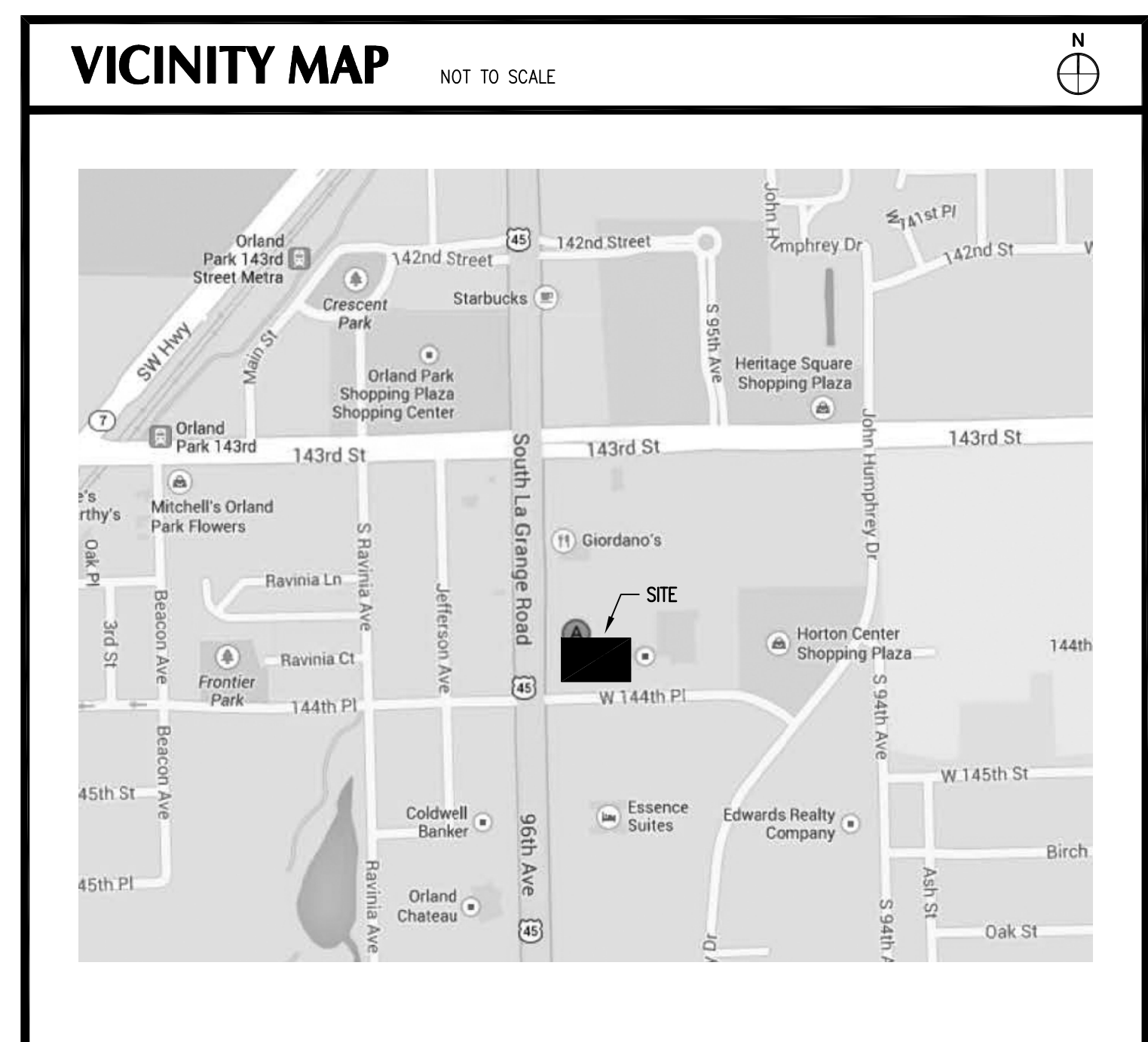
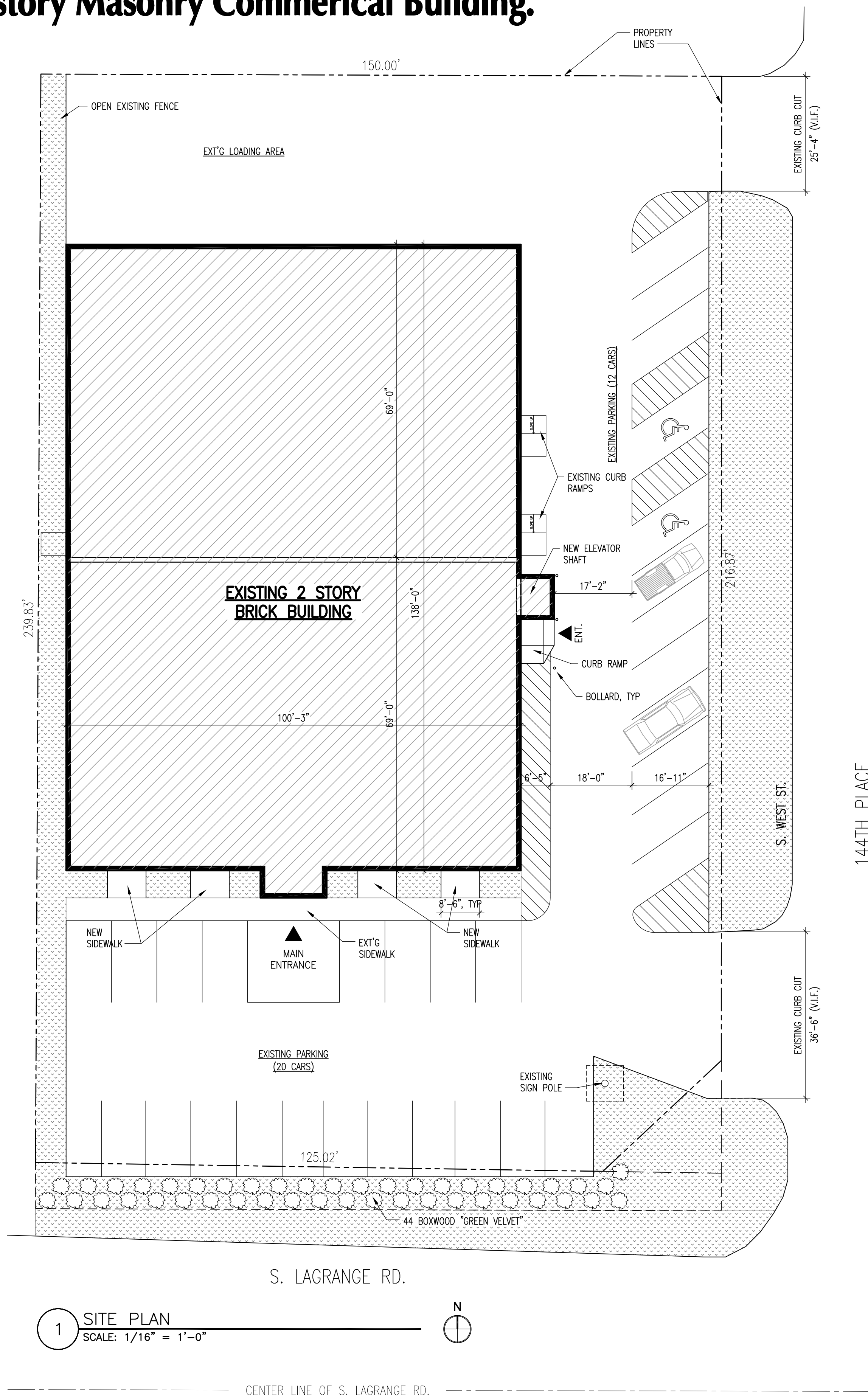
14355 S. LaGrange Rd.
Orland Park, Illinois 60462

ARCHITECT

JINSU BAE ARCHITECTURE

2410 Oneida Lane,
Naperville, IL 60563
312-479-2184

NOTES



AREA (EXISTING)

FLOOR	AREA
GROUND FLOOR	13,311 SF
MEZZANINE	2,270 SF
2ND FLOOR	7,113 SF
TOTAL	22,694 SF

DRAWING INDEX

ARCHITECTURAL

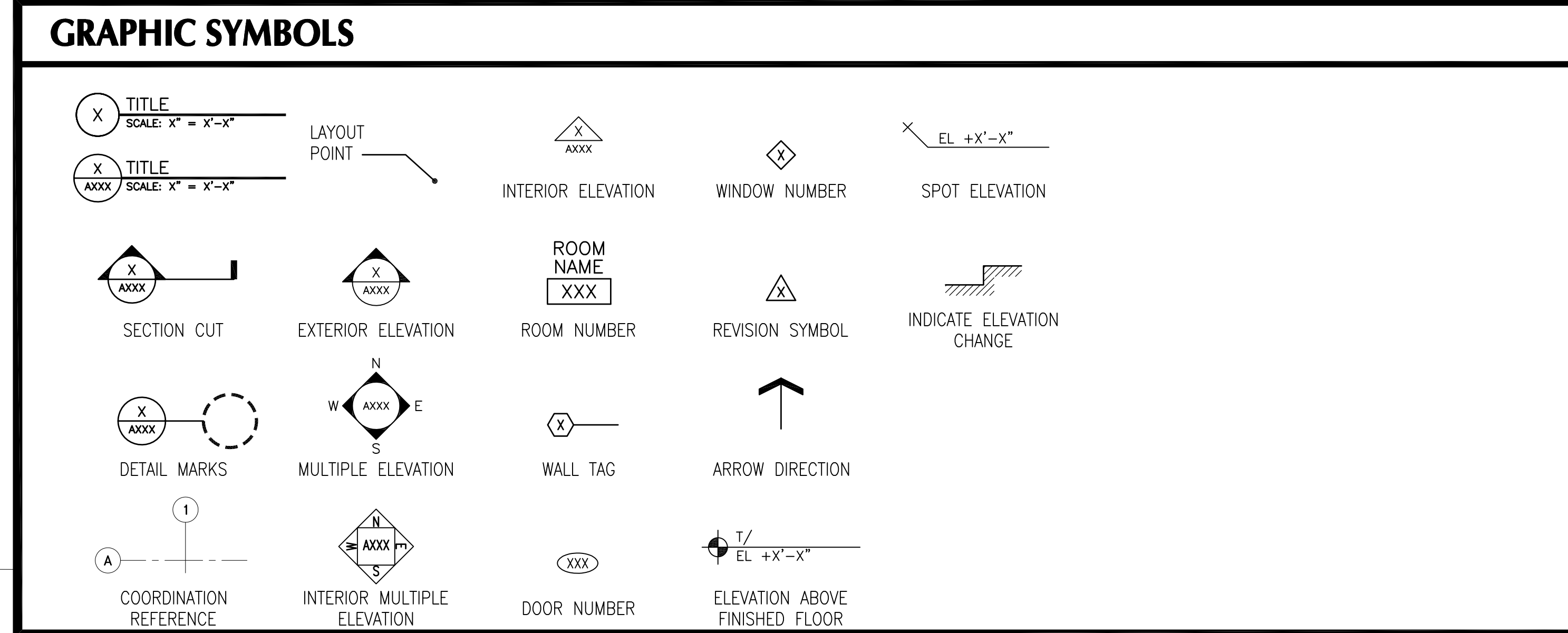
- T001 TITLE, DRAWING INDEX, VICINITY MAP, SITE PLAN, GENERAL NOTES, ARCHITECT'S CERTIFICATE
- A001 CODE ANALYSIS, AREA
- D101 GROUND FLOOR DEMOLITION PLAN, 2ND FLOOR DEMOLITION PLAN
- D201 DEMOLITION ELEVATIONS
- A101 PROPOSED GROUND FLOOR PLANS, 2ND FLOOR PLAN
- A201 PROPOSED ELEVATIONS
- A401 WALL SECTIONS
- A501 ELEVATOR PLANS, SECTIONS, INTR. ELEVATIONS, DETAILS
- A801 DOOR SCHEDULE, ROOM FINISH SCHEDULE, PARTITION TYPES, DOOR TYPES, DOOR DETAILS
- A802 WINDOW TYPES
- S101 STRUCTURAL PLANS
- S201 STRUCTURAL DETAILS
- MEP01 MECHANICAL, ELECTRICAL, PLUMBING PLANS

ARCHITECT'S CERTIFICATIONS

I HEREBY CERTIFY THAT THESE DRAWINGS/DOCUMENTS WERE PREPARED UNDER MY DIRECT SUPERVISION AND TO THE BEST OF MY KNOWLEDGE CONFORM TO THE APPLICABLE BUILDING AND ZONING CODES OF THE CITY OF WHEATON, STATE OF ILLINOIS.

SIGNED: _____ DATE: _____

JINSU BAE
ILLINOIS LICENSE #001.019552 LICENSE EXPIRES 11/30/2014



SHEET INFORMATION

ISSUES / REVISIONS

DATE	ISSUE
12/03/2013	APPEARANCE REVIEWS
10/08/2013	ISSUED FOR PERMIT

SHEET TITLE

TITLE, SITE PLAN, DWG. INDEX, VICINITY MAP, CERTIFICATIONS

PROFESSIONAL STAMP SHEET NUMBER

T001
PAGE NUMBER

OF

EXPIRES: 11/30/2014

D:\Projects\Orland Park\Draw\0605-T001 Cover.dwg
 COPYRIGHT © 2013 JINSU BAE ARCHITECTURE. ALL RIGHTS RESERVED. NO PART OF THIS DOCUMENT MAY BE REPRODUCED, STORED IN A RETRIEVAL SYSTEM, OR TRANSMITTED IN ANY FORM OR BY ANY MEANS, ELECTRONIC, MECHANICAL, PHOTOCOPYING, RECORDING, OR BY ANY INFORMATION STORAGE AND RETRIEVAL SYSTEM, WITHOUT THE WRITTEN PERMISSION OF JINSU BAE ARCHITECTURE.

FACADE RENOVATION & ELEVATOR ADDITION

14355 S. LaGrange Rd.
Orland Park, Illinois 60462

ARCHITECT

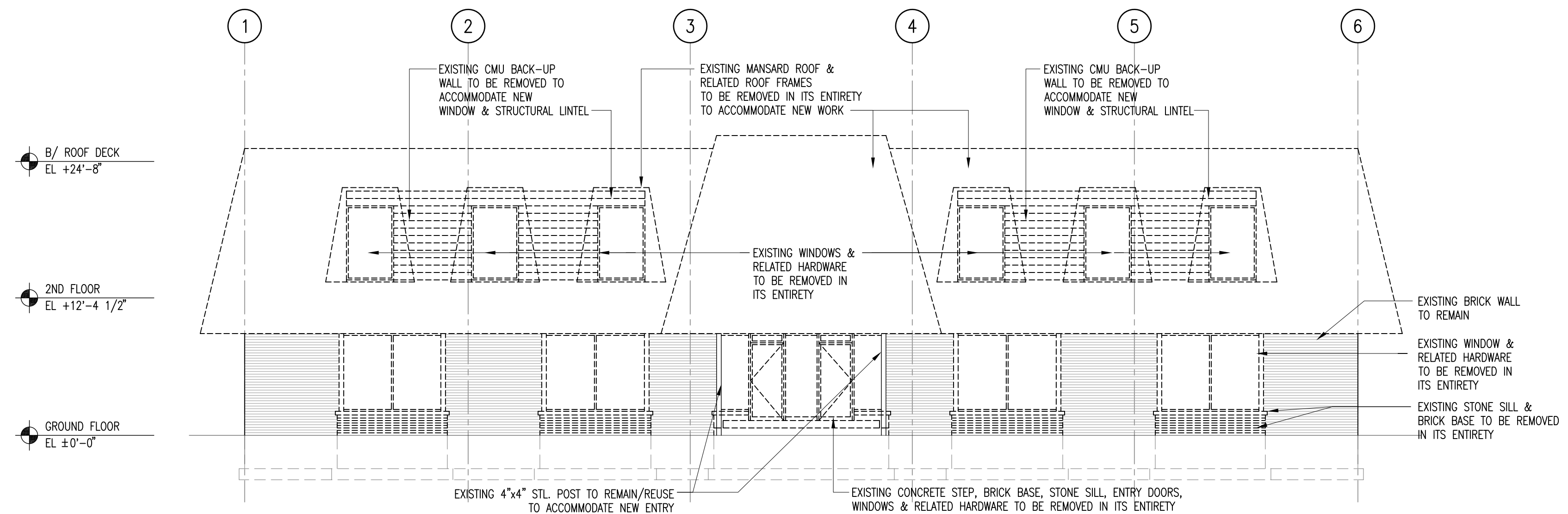
JINSU BAE ARCHITECTURE

2410 Oneida Lane,
Naperville, IL 60563
312-479-2184

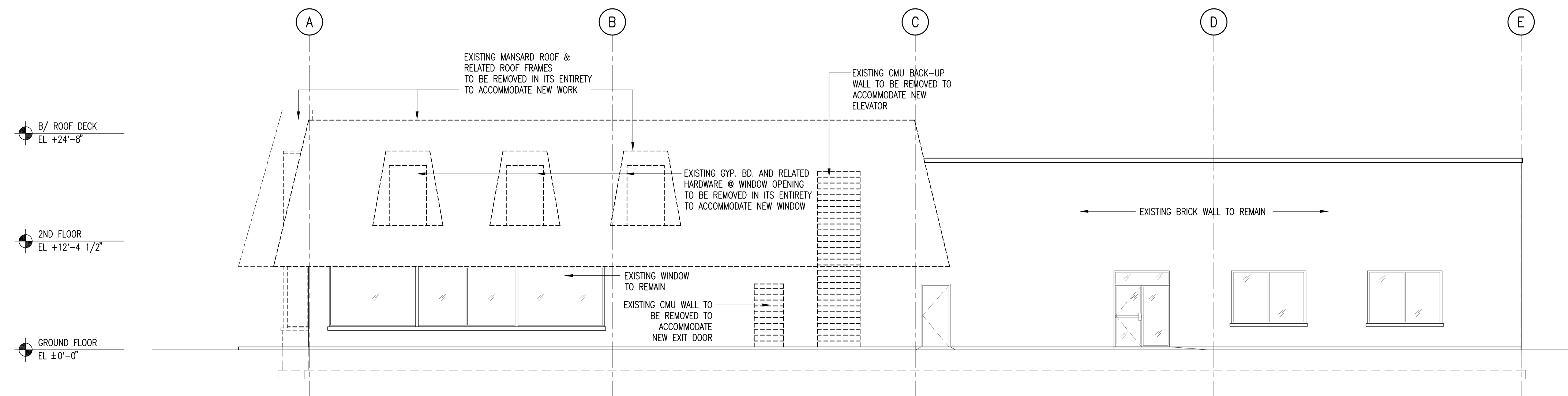
NOTES

DEMOLITION GENERAL NOTES:

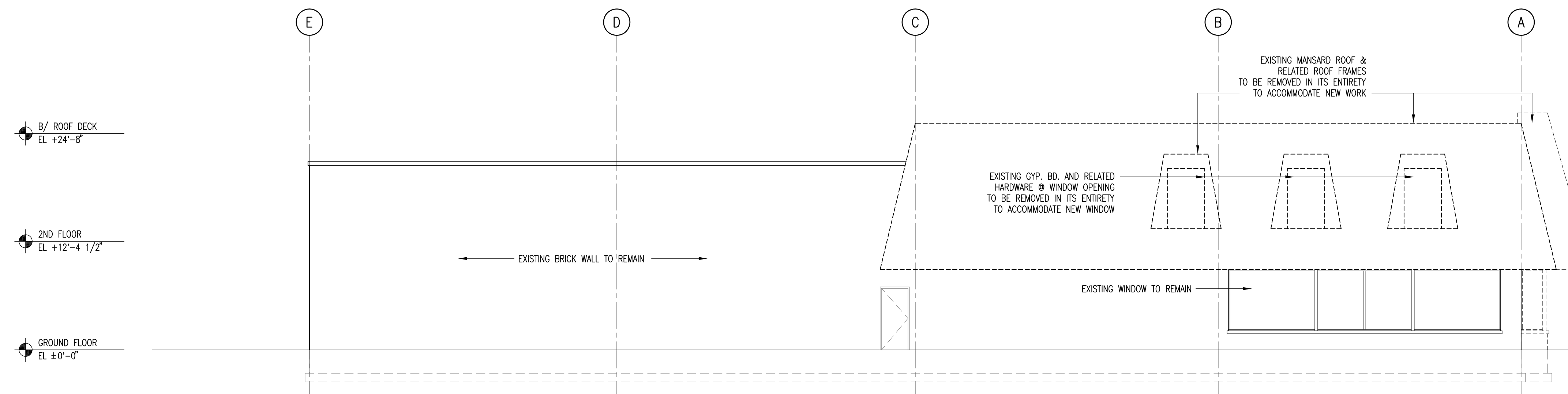
1. PRIOR TO AND DURING ANY DEMOLITION, VERIFY AND MAINTAIN THE BUILDING'S STRUCTURAL INTEGRITY.
2. REVIEW AND GET FAMILIAR WITH ALL EXISTING CONDITIONS PRIOR TO PROCEEDING WITH ANY WORK.
3. VERIFY ALL DIMENSIONS AND CONDITIONS AND REPORT ALL DISCREPANCIES TO THE ARCHITECT AND OWNER IMMEDIATELY, PRIOR TO COMMENCING THE WORK.
4. PROTECT ALL OCCUPIED AREAS FROM CONSTRUCTION DEBRIS, DUST, ETC.
5. INCLUDE ALL CITY, COUNTY AND STATE REQUIREMENTS FOR PERMITS, TEMPORARY BARRICADES, DUST AND NOISE CONTROL, AND LEGAL DISPOSAL OF ALL DEBRIS.
6. REPAIR ALL CONSTRUCTION-RELATED DAMAGE TO EXISTING CONSTRUCTION INDICATED TO REMAIN.
7. INCLUDE ALL PERMIT FEES AND INSPECTIONS REQUIRED FOR COMPLETION OF THE WORK PER THE REQUIREMENTS OF GOVERNING AGENCIES.
8. COORDINATE ALL SYSTEM SHUT DOWNS WITH OWNER'S REPRESENTATIVE.
9. REPORT ANY DEFECTS, DISCREPANCIES, PROBLEMS OR UNCERTAINTIES TO THE ARCHITECT AND OWNER FOR RESOLUTION PRIOR TO COMMENCING THE WORK.
10. ALL DEBRIS, EXCESS MATERIAL, ETC. IS TO BE REMOVED BY THE END OF THE DAY AND THE JOB SITE IS TO BE LEFT SUFFICIENTLY CLEAN.
11. NO EXTRAS WILL BE ALLOWED FOR CLAIMS DUE TO UNFORESEEN OR UNANTICIPATED CONDITIONS WHICH COULD HAVE BEEN DISCOVERED DURING INSPECTION OF THE SITE DURING BIDDING PERIOD AND PRIOR TO THE COMMENCEMENT OF THE WORK.
12. COORDINATE WORK HOURS AND SHUT-DOWN OF SPACES WITH OWNER'S REPRESENTATIVE.
13. COORDINATE REMOVAL OF EXISTING F. F. & E. ITEMS WITH OWNER'S REPRESENTATIVE.



1 EXISTING WEST ELEVATION
SCALE: 1/8" = 1'-0"



2 EXISTING SOUTH ELEVATION
SCALE: 1/8" = 1'-0"



3 EXISTING NORTH ELEVATION
SCALE: 1/8" = 1'-0"

Z:\Projects\Orland Park\0605-0201 Demolition Elevations.dwg

COPYRIGHT (C) BY JINSU BAE ARCHITECTURE. ALL RIGHTS RESERVED.
NO PART OF THIS DOCUMENT MAY BE REPRODUCED, STORED IN A RETRIEVAL SYSTEM, OR TRANSMITTED IN ANY FORM OR BY ANY MEANS, ELECTRONIC,
ANY ADJUSTMENTS MADE TO THIS DOCUMENT WITHOUT THE WRITTEN PERMISSION OF ARCHITECTURE SHALL RENDER IT INVALID AND UNSALEABLE.

SHEET INFORMATION

ISSUES / REVISIONS

DATE	ISSUE
10/28/2013	APPEARANCE REVIEWS
10/08/2013	ISSUED FOR PERMIT

SHEET TITLE

DEMOLITION ELEVATIONS

PROFESSIONAL STAMP SHEET NUMBER

D201

PAGE NUMBER

OF

EXPIRES: 11/30/2014

FACADE RENOVATION & ELEVATOR ADDITION

14355 S. LaGrange Rd.
Orland Park, Illinois 60462

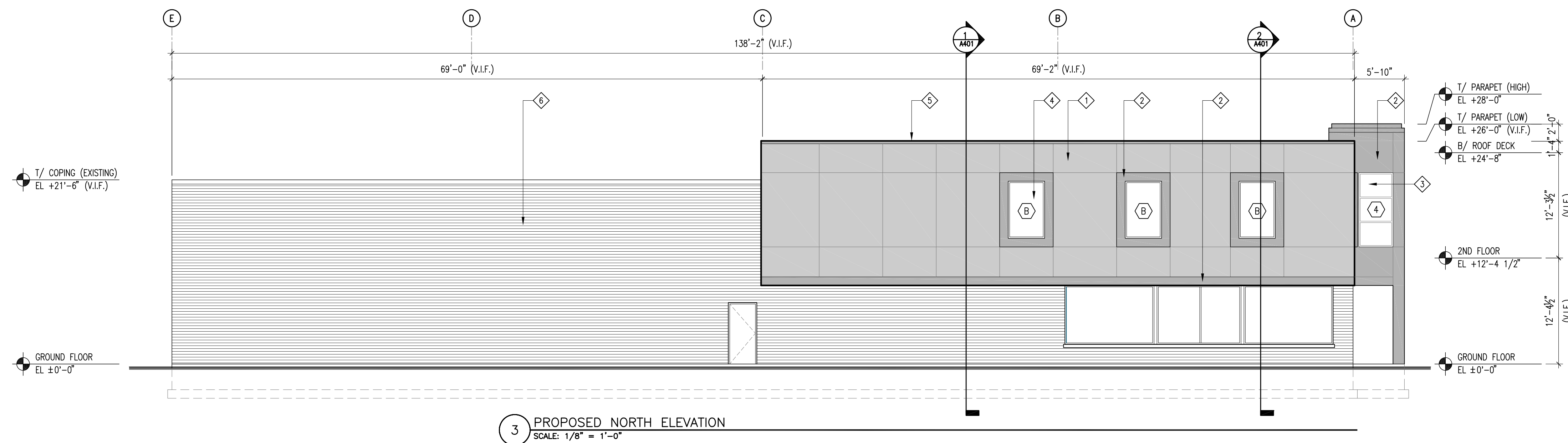
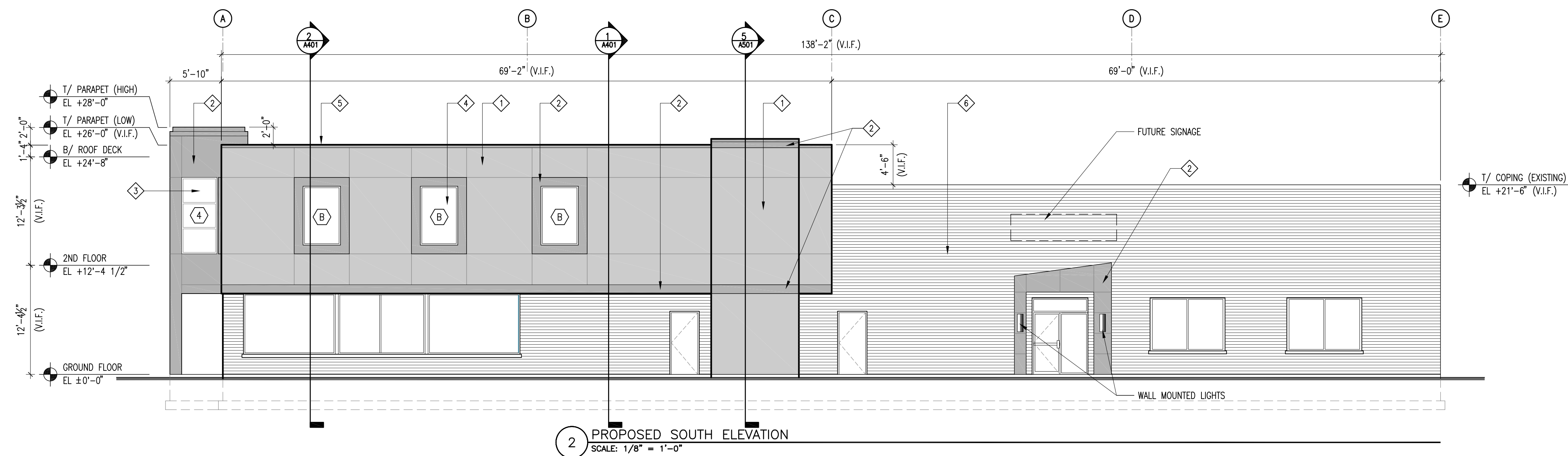
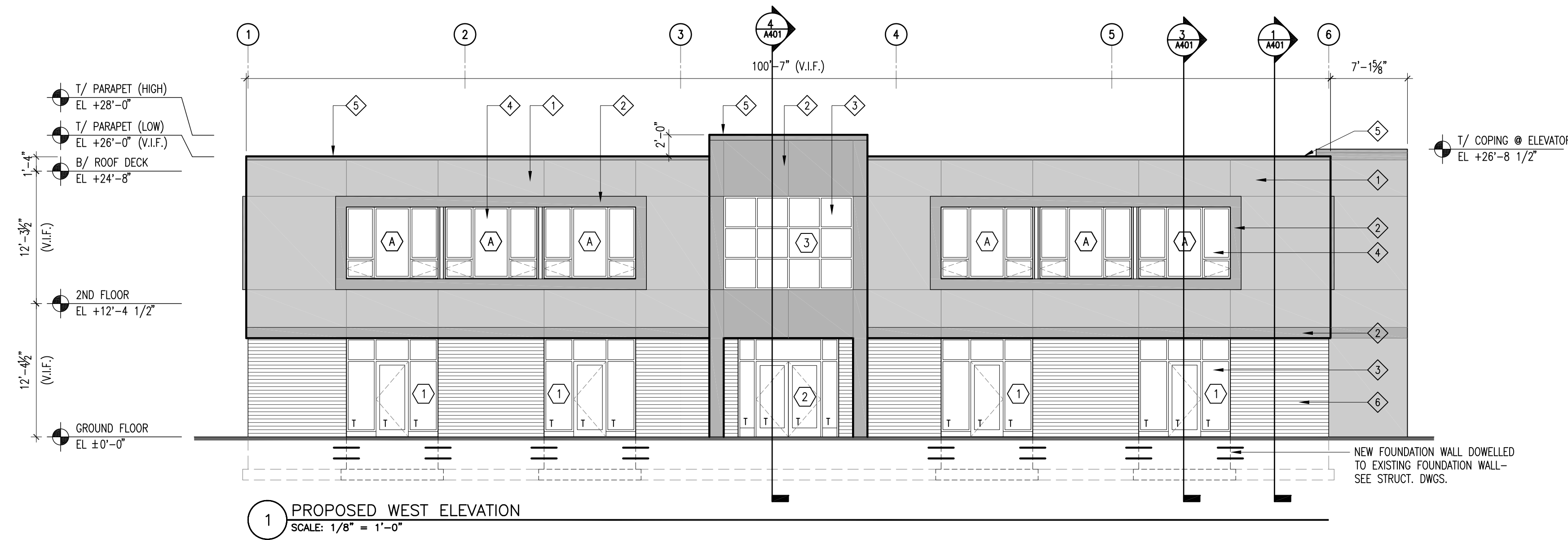
ARCHITECT

JINSU BAE ARCHITECTURE

2410 Oneida Lane,
Naperville, IL 60563
312-479-2184

NOTES

MATERIAL LEGEND	
1	STOCOAT METALLIC-COLOR 1; TAHITIAN PEARL
2	STOCOAT METALLIC-COLOR 2; SUBBURY PLATINUM
3	ALUM. AND GLASS STOREFRONT
4	ALUM. WINDOW SYSTEM
5	MTL. COPING
6	EXISTING BRICK; TAN COLOR



SHEET INFORMATION

ISSUES / REVISIONS

DATE	ISSUE
10/28/2013	APPEARANCE REVIEWS
10/08/2013	ISSUED FOR PERMIT

SHEET TITLE

PROPOSED ELEVATIONS

PROFESSIONAL STAMP SHEET NUMBER

A201

PAGE NUMBER

OF

FACADE RENOVATION & ELEVATOR ADDITION

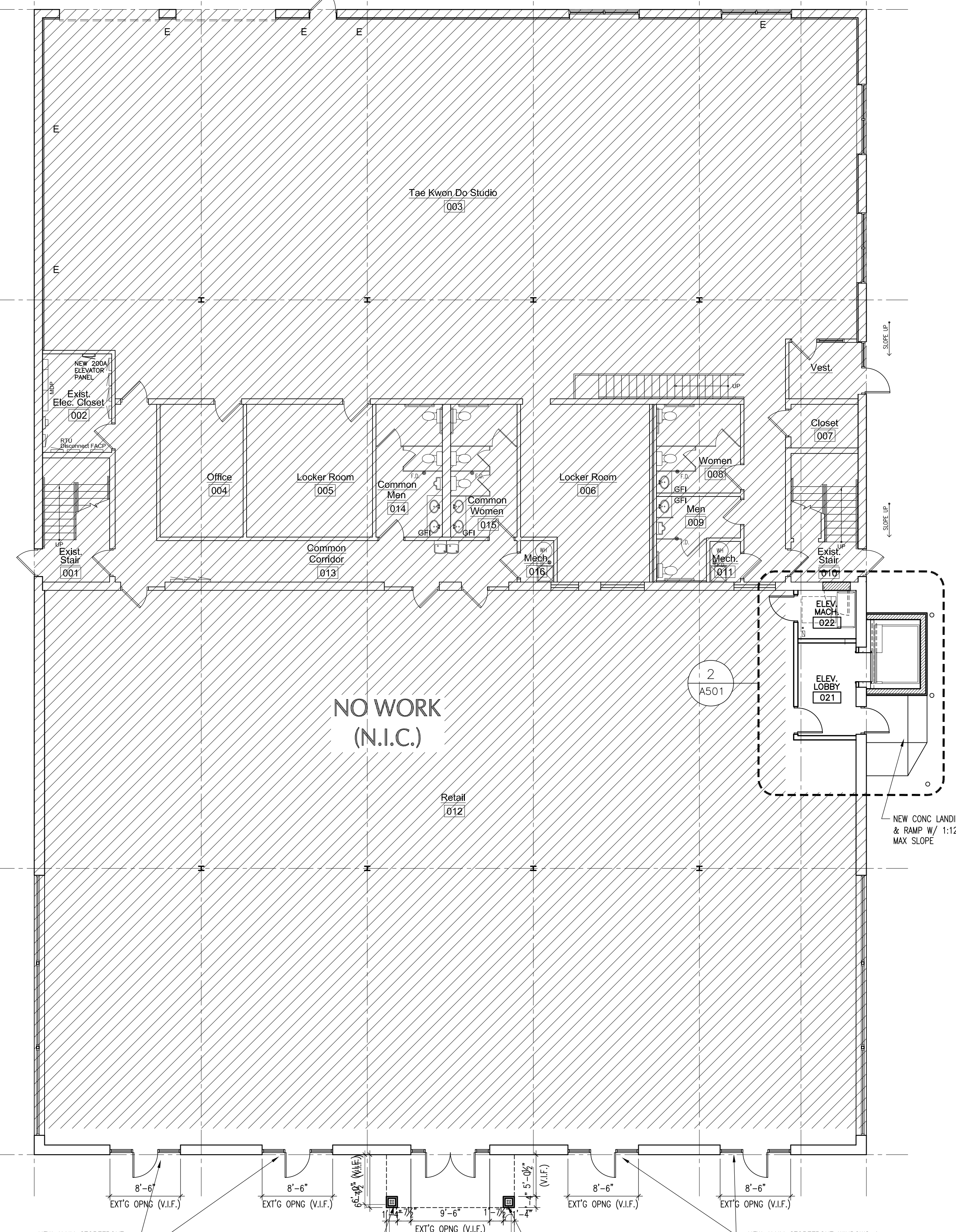
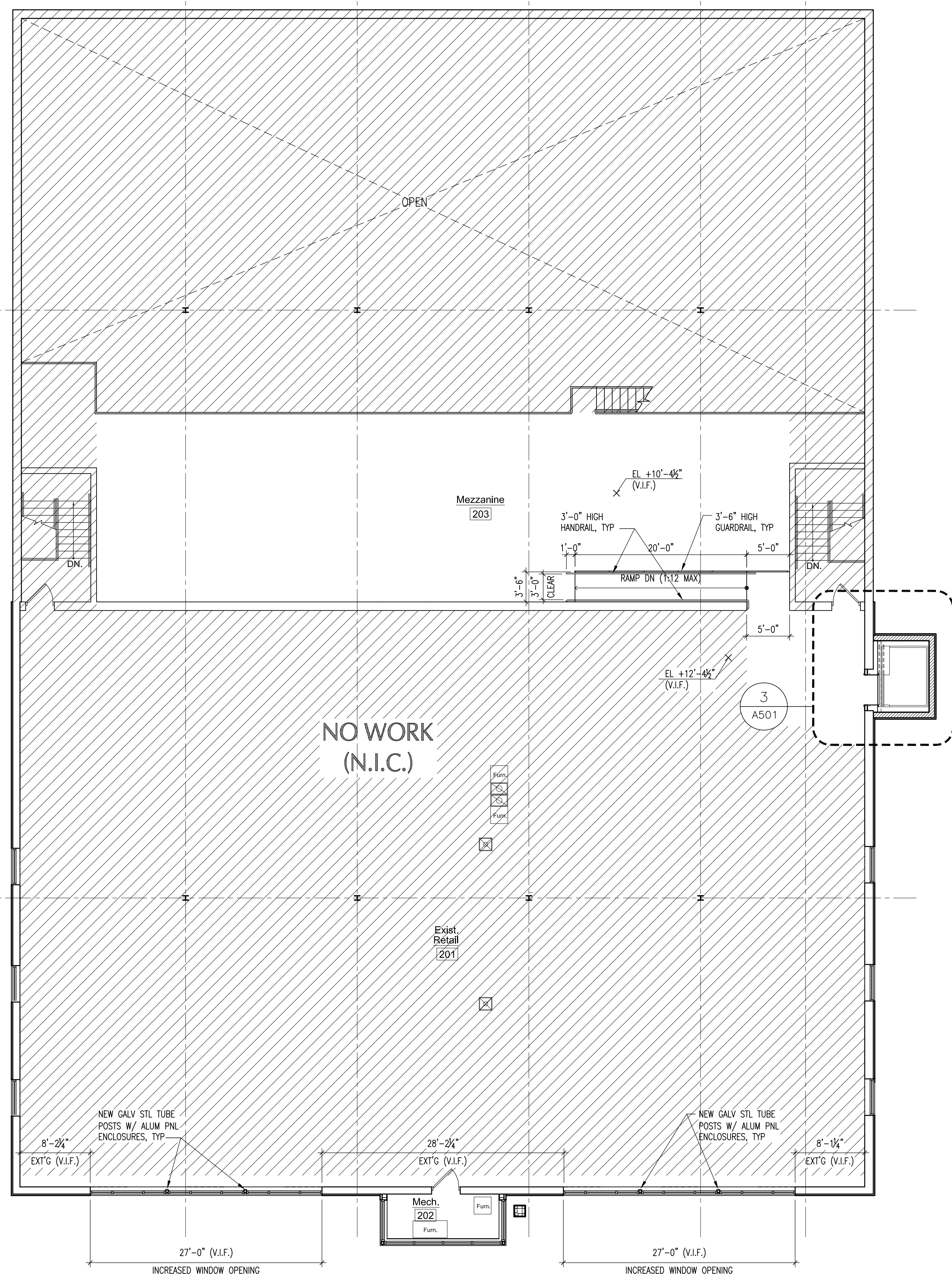
14355 S. LaGrange Rd.
Orland Park, Illinois 60462

ARCHITECT

JINSU BAE ARCHITECTURE

2410 Oneida Lane,
Naperville, IL 60563
312-479-2184

NOTES



GENERAL NOTES:

- ALL DIMENSIONS TO BE VERIFIED IN FIELD. VERIFY ALL DIMENSIONS, ELEVATIONS, AND DETAILS OF EXISTING STRUCTURE WHERE THEY AFFECT THIS CONSTRUCTION. NOTIFY OWNER IF THERE ARE ANY DEVIATIONS FROM THE CONTRACT DOCUMENTS.
- MEP&FP OPENINGS, REQUIRED BUT NOT SHOWN, MUST BE PLACED BETWEEN STRUCTURAL MEMBERS.

LEGEND:

- NEW WALL
- EXISTING TO REMAIN
- NEW DOOR
- EXISTING DOOR TO REMAIN

SHEET INFORMATION

ISSUES / REVISIONS

DATE	ISSUE
10/28/2013	APPEARANCE REVIEWS
10/08/2013	ISSUED FOR PERMIT

SHEET TITLE

PROPOSED GROUND FLOOR PLAN, 2ND FLOOR PLAN

PROFESSIONAL STAMP SHEET NUMBER

A101

PAGE NUMBER

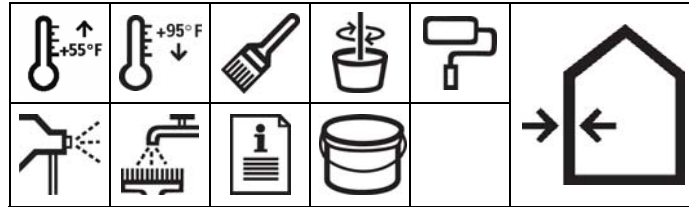
OF

EXPIRES: 11/30/2014

Z:\Projects\Orland Park\0605-A101 New Plans.dwg
COPYRIGHT (C) BY JINSU BAE ARCHITECTURE. ALL RIGHTS RESERVED.
NO PART OF THIS DOCUMENT MAY BE REPRODUCED, STORED IN A RETRIEVAL SYSTEM, OR TRANSMITTED IN ANY FORM OR BY ANY MEANS, ELECTRONIC, MECHANICAL, PHOTOCOPYING, RECORDING, OR BY ANY INFORMATION STORAGE AND RETRIEVAL SYSTEM, WITHOUT THE WRITTEN PERMISSION OF ARCHITECTURE SHALL RENDER IT INVALID AND UNUSABLE.

StoMetallic Clear Coat Sealer

81200 StoMetallic Clear Coat Sealer
Semi-gloss
81202 StoMetallic Clear Coat Sealer Satin



Technical Data

REPORT	TEST METHOD	TEST CRITERIA	TEST RESULTS
Accelerated Weathering	ASTM G-154	2000 hours	No deleterious effects @ 2000 hrs
VOC (g/L)	This product complies with US EPA (40 CFR 59) and South Coast AQMD (Rule 1113) VOC emission standards for faux finishes, and contains VOC of less than 250 g/L.		

Features

Features	Benefits
1 UV Protection and Fade Resistance	Underlying coating will keep its original color for an extended period of time.
2 Improved abrasion resistance and mar resistance	An easier to maintain coating, especially in high traffic areas.
3 Water-Based	Safe, non-toxic; cleans up with water

Surface Preparation

Surface must be clean, sound, and free of all bond-inhibiting materials, including dirt and efflorescence. The StoCoat Metallic product should be fully cured (usually 24 – 48 hours) before applying StoMetallic Clear Coat Sealer.

StoMetallic Clear Coat Sealer is an acrylic based exterior/interior clear coat top sealer used to protect vertical, above grade applications of StoCoat Metallic

Coverage

700 - 800 ft² (69.6-87.2 m²) / per 5gp (2 coats at 3 wet mils).

1,400 – 1,600 ft² (140-174 m²) / per 5gp (1 coat at 3 wet mils)

Packaging

5 gallon pail (19 L).

Sheen

StoMetallic Clear Coat Sealer is available in Satin or Semi-Gloss.

Shelf Life

One year if properly stored and sealed.

Storage

Protect from extreme heat [90°F, (32°C)], freezing, and direct sunlight.

StoMetallic Clear Coat Sealer

Mixing

Mix with a clean, rust-free electric drill and paddle. Do not shake.

StoCoat Metallic Application

Application: StoMetallic Clear Coat Sealer can be sprayed, rolled, or brushed over StoCoat Metallic. Two thin coats applied at 3 wet mils each are recommended as opposed to applying a single thick coating.

Spraying: Spraying is the highly recommended application method to achieve the best metallic look. If thinning is needed, up to 56 fluid ounces of water per 5gp may be added (or 12 fluid ounces per gallon). Thin carefully, as over thinning of the product will result in loss of effectiveness to protect the coating. Use an HVLP gun, conventional cup gun, or airless sprayer.

Rolling: Use a high quality short nap varnish roller.

Brushing: Use a high-quality synthetic bristle brush.

Dry Times – Recoat time is approximately 2 hours. Dry-to-touch time is approximately ½ an hour. (Drying times were recorded at 70°F and 50%RH): Note: Lower temperature and/or higher humidity will lengthen the dry and cure times.

Taping – Use high quality, low-tack tape when taping surfaces that have been previously painted with StoCoat Metallic Coating. When coating over taped-off areas, please be advised that StoCoat Metallic paint will stretch when the tape is removed. Sto strongly recommends using a razor blade to cut along the tape edge to avoid delaminating StoCoat Metallic from the substrate.

Clean Up – Clean brushes, rollers, tools, and equipment with soap and warm water immediately after use.

Limitations

- Ambient and surface temperatures must be above 54°F (13°C) and below 96°F (35°C) during application and drying period.
- Protect from rain and freezing until fully dry.
- Cool, damp conditions retard drying and may require extended periods of protection.
- Avoid application in direct sunlight.
- Avoid application if the surface temperature is less than 5° F (2.8° C) above the ambient dew point temperature.
- Do not apply into sealant joints and do not apply sealant over StoCoat Metallic.
- Apply in a continuous application, always working from a wet edge.
- Not for use on weather-exposed horizontal, low slope, or below grade surfaces, or on surfaces subject to water immersion or ponding water.
- Final appearance is affected by application technique, surface conditions, drying conditions, and lighting. Install a trial area first in the intended end use conditions to be sure of desired results.

Health And Safety

Health Precautions

Product is water-based. As with any chemical construction product, exercise care when handling.

Safety Precautions

Use adequate ventilation. Safety goggles and protective gloves are recommended. Remove contaminated clothing immediately.

First Aid

SKIN CONTACT: Wash thoroughly with soap and water.

EYE CONTACT: Flush immediately with water for 10-15 minutes and contact a physician.

RESPIRATORY PROBLEMS: Remove affected person to fresh air immediately and contact a physician.

INGESTION: Do not induce vomiting. Seek medical attention.

HYGIENE: Wash hands immediately after use. Wash clothing before re-use.

Spills

Collect with suitable absorbent material such as cotton rags.

Disposal

Dispose of in accordance with local, state or federal regulations.

Warning

KEEP CONTAINER CLOSED WHEN NOT IN USE. KEEP OUT OF THE REACH OF CHILDREN. NOT FOR INTERNAL CONSUMPTION. FOR INDUSTRIAL USE ONLY. Consult the Material Safety Data Sheet on www.stocorp.com for further health and safety information.

LIMITED WARRANTY

This product is subject to a written limited warranty which can be obtained free of charge from Sto Corp.

Refer to Sto Specifications for more complete information on proper use and handling of this product.

Sto Corp.
3800 Camp Creek Parkway
Building 1400, Suite 120
Atlanta, GA 30331

Tel: 404-346-3666
Toll Free: 1-800-221-2397
Fax: 404 346-3119

www.stocorp.com

S155-81200-81202

Revision Number: 01
Date: 08/2011



Attention

This product is intended for use by qualified professional contractors, not consumers, as a component of a larger construction assembly as specified by a qualified design professional, general contractor or builder. It should be installed in accordance with those specifications and Sto's instructions. Sto Corp. disclaims all, and assumes no, liability for on-site inspections, for its products applied improperly, or by unqualified persons or entities, or as part of an improperly designed or constructed building, for the nonperformance of adjacent building components or assemblies, or for other construction activities beyond Sto's control. Improper use of this product or use as part of an improperly designed or constructed larger assembly or building may result in serious damage to this product, and to the structure of the building or its components. **STO CORP. DISCLAIMS ALL WARRANTIES EXPRESSED OR IMPLIED EXCEPT FOR EXPLICIT LIMITED WRITTEN WARRANTIES ISSUED TO AND ACCEPTED BY BUILDING OWNERS IN ACCORDANCE WITH STO'S WARRANTY PROGRAMS WHICH ARE SUBJECT TO CHANGE FROM TIME TO TIME.** For the fullest, most current information on proper application, clean-up, mixing and other specifications and warranties, cautions and disclaimers, please refer to the Sto Corp. website, www.stocorp.com.

StoCoat[®] Metallic

81199 StoCoat[®] Metallic



Technical Data

REPORT	TEST METHOD	TEST CRITERIA	TEST RESULT
Accelerated Weathering	ASTM G-154	2000 hours	No deleterious effects @ 2000 hours
VOC (g/L)	This product complies with US EPA (40 CFR 59) and South Coast AQMD (Rule 1113) VOC emission standards for faux finishes, and contains VOC of less than 180 g/L.		

StoCoat[®] Metallic is a water based metallic coating that incorporates mica, metallic particles, and pigments to create an authentic metallic look over prepared vertical above-grade substrates, and textured finishes

Features Benefits

Features	Benefits
1 Metallic Look	Get the metallic look while retaining all the advantages of StoTherm EIFS NExT. Can also be used over most paintable, properly primed interior or exterior surfaces.
2 Single Cladding Source	StoTherm EIFS can be used as one integrated system for your building, yet achieve a variety of looks.
3 UV Resistant	Excellent color retention
4 Water Based	Safe, non-toxic; cleans up with water

Coverage
750-940 ft² (69.6-87.2 m²) / per 5gp (2 coats at 3 wet mils per coat, for a total of 6 wet mils).

Packaging
5 gallon pail (19 L).

Color
StoCoat Metallic comes in 10 standard colors. Custom colors are also available.

Available Colors

Bronze Acadia: 81199-301	Acapulco Copper: 81199-304
English Pewter: 81199-306	Sierra Oro: 81199-309
Copper Rio: 81199-302	Ankara Gold: 81199-305
Sudbury Platinum: 81199-307	Tahitian Pearl: 81199-310
Saharan Sands: 81199-303	Custom Colors Available
Parisian Bronze: 81199-308	

Shelf Life
One year if properly stored and sealed.

Surface Preparation

Concrete and masonry surfaces:
Surfaces must be free of all bond-inhibiting materials, including dirt, efflorescence, form oil and other foreign matter. Loose or damaged material must be removed by water blasting, sand-blasting or mechanical wire brushing and repaired. Avoid application over irregular surfaces. Resurface, patch or level surfaces to required tolerance and smoothness with appropriate Sto leveling materials. Fill surface voids. Refer to ASTM D-4258 and ASTM D-4261 for complete details on methods of preparing cementitious substrates for coatings.

Exterior Insulation and Finish Systems (EIFS) StoTherm[®]:
Surface must be clean, sound, and free of all bond-inhibiting materials, including dirt and efflorescence.

Gypsum wallboard surfaces:
Wallboard must be taped and fasteners spotted with joint compound to achieve a Level 5 finish. Refer to ASTM C-840 and gypsum wallboard manufacturer's literature. Surface must be free of dust, dirt and other bond inhibiting materials.

Storage
Protect from extreme heat [90°F, (32°C)], freezing, and direct sunlight.

Mixing

Stir with a clean, rust-free mixing paddle.

StoCoat Metallic Application

Application:
StoCoat Metallic coatings can be sprayed, rolled, or brushed onto most paintable, properly primed, exterior or interior surfaces which can include concrete and masonry, previously painted surfaces, textured finishes, gypsum based surfaces, ceilings, trim, columns, paintable wall coverings, furniture, and doors. A minimum of two thin coats applied at 3 wet mils each are required for most colors.

StoCoat[®] Metallic

StoCoat Metallic Application cont.

Spraying: Spraying is the highly recommended application method to achieve the best metallic look. If thinning is needed, up to 72 fluid ounces of water per 5gp may be added (or 16 fluid ounces per gallon). Thin carefully, as over thinning of the coating will result in loss of hide and a reduction of the desired appearance. Use an HVLP gun or a conventional cup gun with the fluid and air supply from a pressure pot and compressor. Air pressure at the HVLP spray gun needs to be approximately 30 psi, with greater pressures at the tank, approximately 60 psi. Examples: Binks-Mach 1 HVLP, with a 94-nozzle set up (0.55 or 1.4mm diameter fluid tip and a 90P air nozzle). The settings for this equipment were: Fluid Pressure-25psi and Air Pressure-45psi. Binks- 2001 Conventional, with a 66SS air nozzle set up (0.70 or 1.8 fluid tips and a 66SD air nozzle). The settings for this equipment were: Fluid Pressure-30 psi and Air Pressure-60 psi.

Use a NIOSH approved respirator when spraying. Provide adequate ventilation. Note: Do not use turbine-type "air compressors" to power the HVLP spray gun and do not use airless spray systems.

Rolling: Application by roller must be done in multiple coats to achieve color and film build. Each coat must be completely dry to avoid "rewetting" during subsequent applications. Use a high quality ½" synthetic nap roller. To roll StoCoat Metallic coatings, Sto recommends using StoMetallic Extender for Rolling (81201) for best results. The Extender for Rolling increases the open time of the product, and helps to reduce roller lap marks. StoMetallic Extender for Rolling should be added at a dosage of 16 oz per 1 gallon of StoCoat Metallic, or 75 oz per 5GP

With the roller loaded with StoCoat Metallic apply an even coat to the work area. While the surface is still wet "lay off" the surface in one direction with very light roller pressure. No more than the weight of the roller should be required to blend the lap lines left from the initial application. Allow the surface to dry thoroughly before attempting to apply another coat. Always maintain a wet edge and work in small areas, corner to corner or natural architectural breaks.

Brushing: Use a high-quality brush recommended for water-based semi-gloss paints.

Dry Times – Recoat time is approximately ½ hour. Dry-to-touch time is approximately an hour. (Drying times were recorded at 70°F and 50%RH): Note: Lower temperature and/or higher humidity will lengthen the dry and cure times. Use of StoCoat Extender for Rolling will significantly increase dry times.

Taping – Use high quality, low-tack tape when taping surfaces that have been previously painted with StoCoat Metallic Coating. When coating over taped-off areas, please be advised that StoCoat Metallic paint will stretch when the tape is removed. Sto strongly recommends using a razor blade to cut along the tape edge to avoid delaminating StoCoat Metallic from the substrate.

Clean Up – Clean tools and equipment with soap and warm water immediately after use. Dried material can only be removed mechanically.

StoTherm EIFS Application Process

This section is a description of the general steps required to create a metal panel look using StoCoat Metallic over a StoTherm EIF system. A full scale mock-up should be completed to verify the application and get acceptance from the owner / architect or appropriate authority.

Option 1: StoCoat Metallic over a textured finish

1. Install the complete StoTherm EIFS, including the desired textured finish (Maximum Reflectance Option). The finish should be tinted to match the StoCoat Metallic color that will be used.
2. Apply a minimum of two thin coats (3 wet mils per coat) of StoCoat Metallic Coating over the finish. Recoat time is approximately 0.5 hours under favorable (70° F and 50% RH) drying conditions.
3. Apply two thin coats of a clear coat sealer (3 wet mils per coat) for exterior and interior applications. The approved Sto clear coat sealers include: Sto Clear Coat Sealer (80512), StoMetallic Clear Coat Sealer Satin (81202), and StoMetallic Clear Coat Sealer Semi-gloss (81200). Refer to the Product Bulletins of these products for application instructions.

Note: Sto Primer Smooth (80804) tinted to the desired color is required if applying StoCoat Metallic over an existing textured finish or surface (i.e. not new construction).

Option 2: Metal Panel Look – Smooth with moderate reflectance

Notice: Replicating a smooth metal panel will require a highly skilled applicator. This process can have an installed cost significantly higher than EIFS with a standard textured finish, primarily due to the added labor involved.

Application Steps: These steps were used by a Sto Technician to achieve a smooth surface. A full scale mock-up should be constructed to see if these steps should be modified to achieve the look desired by the approving authority:

1. Apply EIFS base coat and mesh over EPS exactly like you would for a standard StoTherm EIFS. Make sure the mesh is fully embedded and not visible.
2. Apply a layer of Sto Flexible Skim Coat (80213) by trowel, and allow to dry. Spot sand as needed with 80 grit or 100 grit sand paper or screens. Repeat layers of Sto Flexible Skim Coat as needed to achieve the desired smoothness.
3. Apply Sto Primer Smooth (80804) by spraying or rolling in the appropriately tinted color over the Sto Flexible Skim Coat. The Sto Primer Smooth can then be sanded (100 grit sand paper or screens) to get the "smoothest" look possible.
4. Spray StoCoat Metallic coating over the sanded primer in minimum two thin coats (3 wet mils each). Recoat time is approx. 0.5 hours under favorable (70° F and 50% RH) drying conditions.
5. Apply two thin coats of a clear coat sealer (3 wet mils per coat) for exterior and interior applications. The approved Sto clear coat sealers include: Sto Clear Coat Sealer (80512), StoMetallic Clear Coat Sealer Satin (81202), and StoMetallic Clear Coat Sealer Semi-gloss (81200). Refer to the Product Bulletins of these products for application instructions.

Option 3: Metal Panel Look – Ultra Smooth and low reflectance

Notice: Replicating a smooth metal panel will require a highly skilled applicator. This process can have an installed cost significantly higher than EIFS with a standard textured finish, primarily due to the added labor involved.

StoCoat[®] Metallic

StoTherm EIFS Application Process cont.

Application Steps: These steps were used by a Sto Technician to achieve the smoothest surface possible. A full scale mock-up should be constructed to see if these steps should be modified to achieve the look desired by the approving authority:

1. Apply EIFS base coat and mesh over EPS exactly like you would for a standard StoTherm EIFS. Make sure the mesh is fully embedded and not visible.
2. Apply a thin layer of Sto Flexible Skim Coat (80213) by trowel, and allow to dry. Spot sand as Needed with 80 grit sand paper or screens.
3. Apply a 2nd thin layer of Sto Flexible Skim Coat by trowel, and allow to dry. Spot sand as needed with 80 grit sand paper or screens
4. Apply a thin layer of Sto Dispersion Adhesive (80829) by trowel, and allow to dry. Spot sand as Needed with 100 grit sand paper or screens.
5. Apply a 2nd thin layer of Sto Dispersion Adhesive by trowel, and allow to dry. Sand the surface as needed to achieve the desired smoothness with 100 grit sand paper or screens..
6. Apply Sto Primer Smooth (80804) by spraying or rolling in the appropriately tinted color over the Sto Dispersion Adhesive. Sto Primer Smooth can then be sanded if needed by using 100 grit sand paper or screens to get the "smoothest" look possible.
7. Spray StoCoat Metallic coating over the sanded primer in minimum two thin coats (3 wet mils each). Recoat time is approx. 0.5 hours under favorable (70° F and 50% RH) drying conditions.
8. Apply two thin coats of a clear coat sealer (3 wet mils per coat) for exterior and interior applications. The approved Sto clear coat sealers include: Sto Clear Coat Sealer (80512), StoMetallic Clear Coat Sealer Satin (81202), and StoMetallic Clear Coat Sealer Semi- gloss (81200). Refer to the Product Bulletins of these products for application instructions.

Limitations

- Ambient and surface temperatures must be above 58°F (14°C) and below 85°F (29°C) during application and drying period.
- Protect from rain and freezing until fully dry.
- Cool, damp conditions retard drying and may require extended periods of protection.
- Avoid application in direct sunlight.
- Avoid application if the surface temperature is less than 5° F (2.8° C) above the ambient dew point temperature.
- Do not apply into sealant joints and do not apply sealant over StoCoat Metallic.
- Apply in a continuous application, always working from a wet edge.
- Panel sizes should be limited to a maximum of 5ft by 5ft to minimize the effects of substrate variations which can compromise aesthetics. Establish panel dimensions based on full scale mock-ups approved by the owner/architect or appropriate authority.
- Not for use on weather-exposed horizontal, low slope, or below grade surfaces, or on surfaces subject to water immersion or ponding water.
- Sloped surfaces: Refer to Sto details.
- Minor shade variations may occur from batch to batch (refer to batch number on pail). Avoid installing separate batches side-by-side.
- Final appearance is affected by application technique, surface conditions, drying conditions, and lighting. Install a trial area first in the intended end use conditions to be sure of desired results.
- Replicating a smooth metal panel will require a highly skilled applicator. This process can have an installed cost significantly higher than EIFS with a standard textured finish, primarily due to the added labor involved.
- A few colors may not be suitable for EIFS applications based on LRV (Light Reflectance Value, >20 is the Sto recommendation). Custom Colors also must be checked to ensure compliance with LRV limits. The LRV values are listed below for the 10 standard StoCoat Metallic colors:
Bronze Acadia (21)
English Pewter (31)
Copper Rio (13)
Sudbury Platinum (68)
Saharan Sands (59)
Parisian Bronze (10)
Acapulco Copper (27)
Sierra Oro (27)
Ankara Gold (44)
Tahitian Pearl (81)

Health And Safety

Health Precautions

Product is water-based. As with any chemical construction product, exercise care when handling.

Safety Precautions

Use adequate ventilation. Safety goggles and protective gloves are recommended. Remove contaminated clothing immediately.

First Aid

SKIN CONTACT: Wash thoroughly with soap and water.

EYE CONTACT: Flush immediately with water for 10-15 minutes and contact a physician.

RESPIRATORY PROBLEMS: Remove affected person to fresh air immediately and contact a physician.

INGESTION: Do not induce vomiting. Seek medical attention.

HYGIENE: Wash hands immediately after use. Wash clothing before re-use.

Spills

Collect with suitable absorbent material such as cotton rags.

Disposal

Dispose of in accordance with local, state or federal regulations.

Warning

KEEP CONTAINER CLOSED WHEN NOT IN USE. KEEP OUT OF THE REACH OF CHILDREN. NOT FOR INTERNAL CONSUMPTION. FOR INDUSTRIAL USE ONLY.

Consult the Material Safety Data Sheet on www.stocorp.com for further health and safety information.

LIMITED WARRANTY

This product is subject to a written limited warranty which can be obtained free of charge from Sto Corp.

Refer to Sto Specifications for more complete information on proper use and handling of this product.

Sto Corp.
3800 Camp Creek Parkway
Building 1400, Suite 120
Atlanta, GA 30331

Tel: 404-346-3666
Toll Free: 1-800-221-2397
Fax: 404 346-3119

S155-81199
Revision Number: 02
Date: 04/2012



www.stocorp.com

Attention

This product is intended for use by qualified professional contractors, not consumers, as a component of a larger construction assembly as specified by a qualified design professional, general contractor or builder. It should be installed in accordance with those specifications and Sto's instructions. Sto Corp. disclaims all, and assumes no, liability for on-site inspections, for its products applied improperly, or by unqualified persons or entities, or as part of an improperly designed or constructed building, for the nonperformance of adjacent building components or assemblies, or for other construction activities beyond Sto's control. Improper use of this product or use as part of an improperly designed or constructed larger assembly or building may result in serious damage to this product, and to the structure of the building or its components. **STO CORP. DISCLAIMS ALL WARRANTIES EXPRESSED OR IMPLIED EXCEPT FOR EXPLICIT LIMITED WRITTEN WARRANTIES ISSUED TO AND ACCEPTED BY BUILDING OWNERS IN ACCORDANCE WITH STO'S WARRANTY PROGRAMS WHICH ARE SUBJECT TO CHANGE FROM TIME TO TIME.** For the fullest, most current information on proper application, clean-up, mixing and other specifications and warranties, cautions and disclaimers, please refer to the Sto Corp. website, www.stocorp.com.



StoCoat® Metallic
Metal Aesthetics +
EIFS Advantages

StoCoat® Metallic

Combining the look of metal with the superior insulating properties of StoTherm EIFS in one integrated system.

This isn't your ordinary coating. StoCoat Metallic creates breathtaking design possibilities combined with the energy efficiency and reliability of StoTherm EIFS NExT.

StoCoat Metallic incorporates mica, metallic particles and pigments into a superior coating that creates the look of a substantive metal surface. When building design calls for the visual impact of metal, StoCoat Metallic delivers.

StoCoat Metallic comes in 10 standard colors, and custom colors are also available to ensure an aesthetic fit with almost any project. With the option of applying over a variety of smooth and textured surfaces, StoCoat Metallic can read as sleekly modern or elemental and organic.

The application techniques used are common to the paint and drywall trades with only water needed for clean up of this safe, nontoxic coating. StoCoat Metallic systems with a clear coat sealer provide excellent long-term durability and UV fade resistance.

StoCoat Metallic can be used on most paintable, properly primed interior or exterior surfaces. It's specifically formulated for application on StoTherm EIFS and other properly prepared surfaces such as concrete, masonry and gypsum wallboard. StoCoat Metallic and StoTherm EIFS: an integrated, single-source system with a myriad of design options.



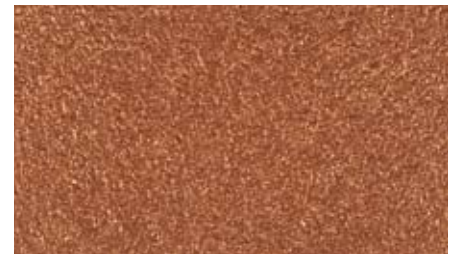
StoCoat Metallic Features and Benefits

Feature	Benefit
Metallic Look	Get the metallic look while retaining all the advantages of StoTherm EIFS NExT. Can also be used over any paintable, properly primed interior or exterior surface.
Single Cladding Sourcing	StoTherm EIFS can be used as one integrated system for your building, yet achieve a variety of looks.
Clear Coat Sealer	Excellent color retention and long-term durability.
Water-Based	Safe, non-toxic; cleans up with water.



81199-304 Acapulco Copper

Textured



81199-309 Sierra Oro

Textured



81199-301 Bronze Acadia

Textured



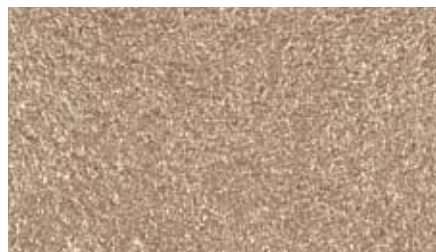
81199-310 Tahitian Pearl

Textured



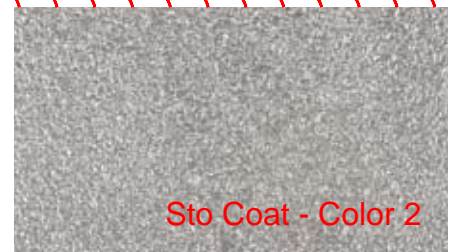
81199-306 English Pewter

Textured



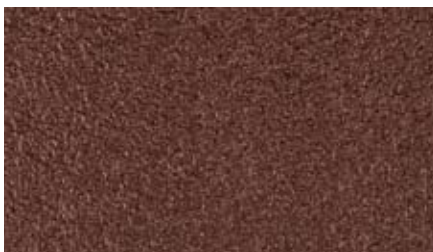
81199-303 Saharan Sands

Textured



81199-307 Sudbury Platinum

Textured



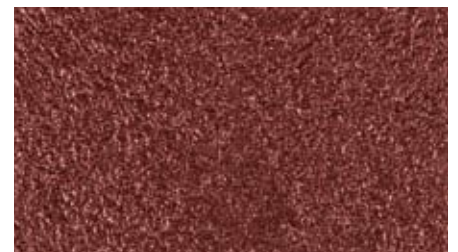
81199-308 Parisian Bronze

Textured



81199-305 Ankara Gold

Textured



81199-302 Copper Rio

Textured

This chart offers a representation of the StoCoat Metallic colors. Actual color of manufactured product may vary slightly from the chart. Color perception is affected by degree of gloss, texture, and lighting conditions. For best results, always request a product sample, select color under natural lighting conditions and construct full scale job site mock ups for final color approval.

Minor shade variations may occur from batch to batch (refer to batch no. on pail). Avoid installing separate batches side-by-side and avoid application in direct sunlight. Avoid installing new coating adjacent to weathered or aged coating. Sto Corp. will not be responsible for shade or color variation caused by application or substrate deficiencies, or fading resulting from natural causes such as weather.

Smart and Sustainable

Our impact on performance is big, but our impact on the environment is small. All Sto coatings are easy to apply, safe and nontoxic, and have low VOCs. We incorporate sustainable practices throughout our operations, earning us ISO 14001 certification for our environmental management system. Many of our products help reduce the environmental impact of construction by reducing maintenance requirements and extending the building façade's lifecycle.



Sto Studio

Sto Studio is a unique visual service that facilitates design and color decisions. With Sto Studio's full-color, professional-grade renderings, you can see your building as it would look in different design scenarios. This gives you confidence in your choices, leaving you more satisfied with the outcome. To find out more, call 1-800-221-2397 or email stostudio@stocorp.com.



Support

Our experienced sales force and industry-leading technical services department are ready to support you. We'll ensure the most up-to-date techniques are available to create a project with outstanding curb appeal.

Sto Corp.

3800 Camp Creek Parkway
 Building 1400, Suite 120
 Atlanta, GA 30331
 Phone 404-346-3666
 Toll Free 1-800-221-2397
 Fax 404-346-3119
www.stocorp.com



ATTENTION

Sto products are intended for use by qualified professional contractors, not consumers, as a component of a larger construction assembly as specified by a qualified design professional, general contractor or builder. They should be installed in accordance with those specifications and Sto's instructions. Sto Corp. disclaims all, and assumes no, liability for on-site inspections, for its products applied improperly, or by unqualified persons or entities, or as part of an improperly designed or constructed building, for the nonperformance of adjacent building components or assemblies, or for other construction activities beyond Sto's control. Improper use of Sto products or use as part of an improperly designed or constructed larger assembly or building may result in serious damage to this product, and to the structure of the building or its components. **STO CORP. DISCLAIMS ALL WARRANTIES EXPRESSED OR IMPLIED EXCEPT FOR EXPLICIT LIMITED WRITTEN WARRANTIES ISSUED TO AND ACCEPTED BY BUILDING OWNERS IN ACCORDANCE WITH STO'S WARRANTY PROGRAMS, WHICH ARE SUBJECT TO CHANGE FROM TIME TO TIME.** For the fullest, most current information on proper application, clean-up, mixing and other specifications and warranties, cautions and disclaimers, please refer to the Sto Corp. website, www.stocorp.com.