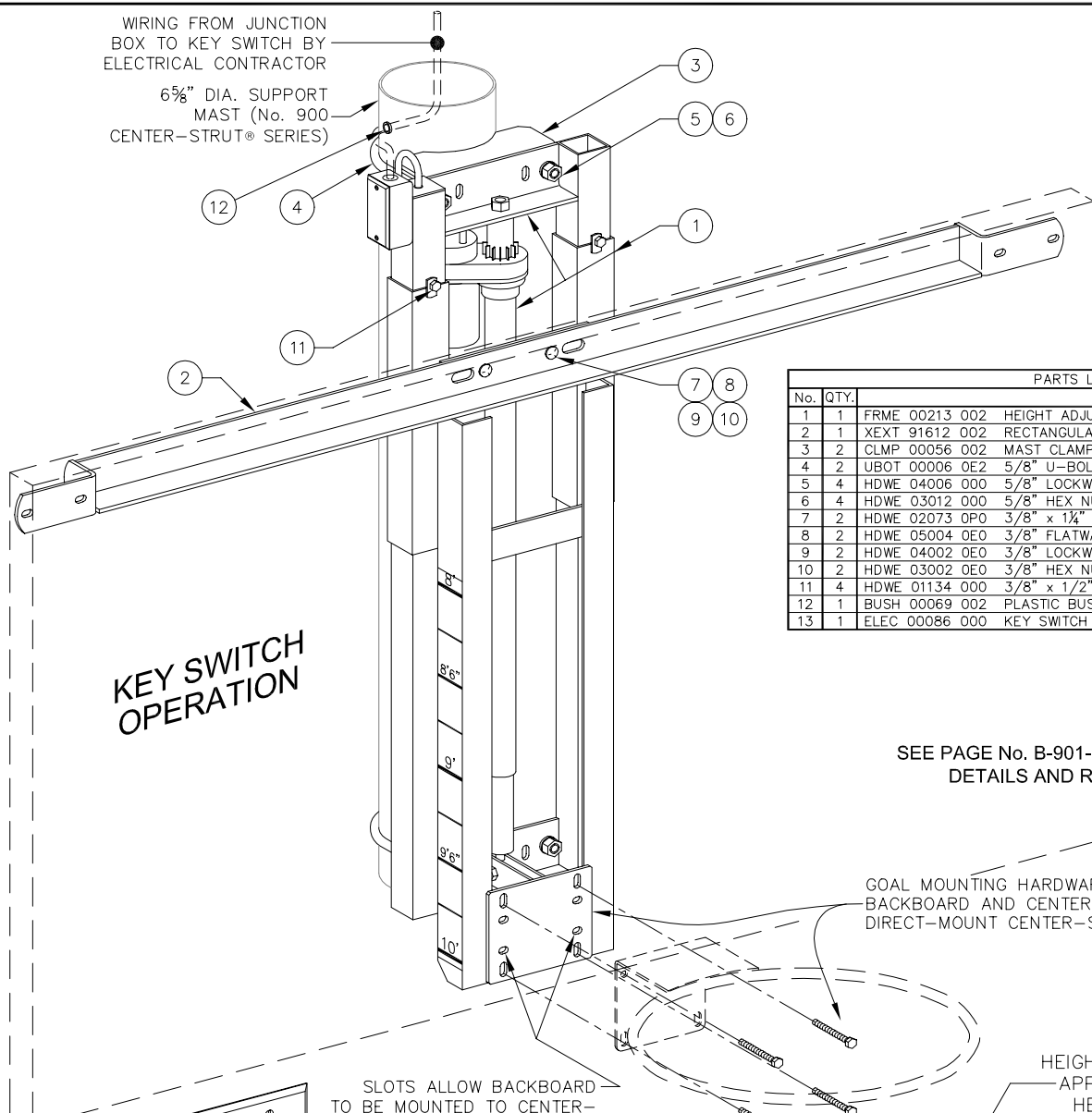


WIRING FROM JUNCTION BOX TO KEY SWITCH BY ELECTRICAL CONTRACTOR

6 5/8" DIA. SUPPORT MAST (No. 900 CENTER-STRUT® SERIES)



**KEY SWITCH OPERATION**

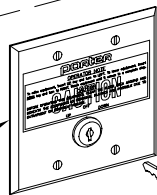
PARTS LIST			
No.	QTY.	FRME	DESCRIPTION
1	1	FRME 00213 002	HEIGHT ADJUSTER ASSEMBLY
2	1	XEXT 91612 002	RECTANGULAR BACKBOARD EXTENSION
3	2	CLMP 00056 002	MAST CLAMP
4	2	UBOT 00006 0E2	5/8" U-BOLT
5	4	HDWE 04006 000	5/8" LOCKWASHER
6	4	HDWE 03012 000	5/8" HEX NUT
7	2	HDWE 02073 0P0	3/8" x 1 1/4" Lg. CARRIAGE BOLT (Grade 5)
8	2	HDWE 05004 0E0	3/8" FLATWASHER
9	2	HDWE 04002 0E0	3/8" LOCKWASHER
10	2	HDWE 03002 0E0	3/8" HEX NUT
11	4	HDWE 01134 000	3/8" x 1/2" Lg. NYLON BOLT
12	1	BUSH 00069 002	PLASTIC BUSHING
13	1	ELEC 00086 000	KEY SWITCH ASSEMBLY

SEE PAGE No. B-901-K FOR FIELD WIRING DETAILS AND REQUIREMENTS

GOAL MOUNTING HARDWARE EXTENDS THROUGH BACKBOARD AND CENTER CHANNEL TO PROVIDE DIRECT-MOUNT CENTER-STRUT® FEATURE

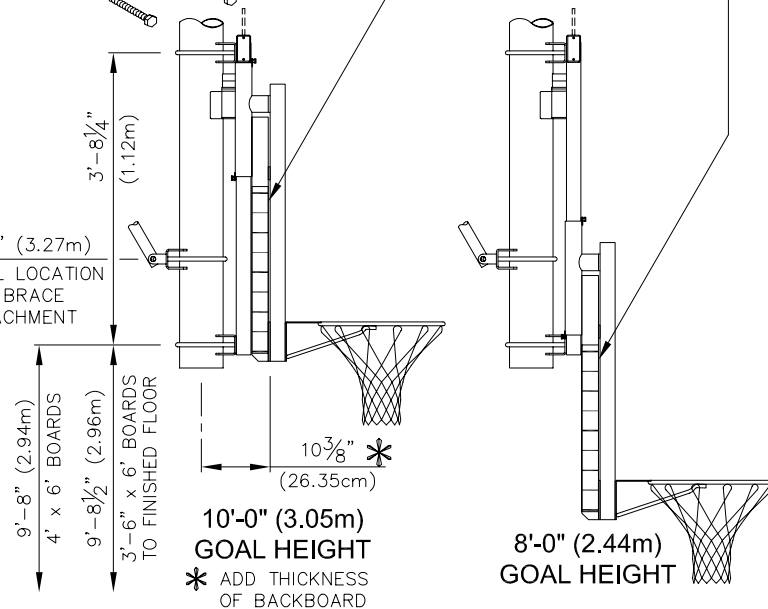
SLOTS ALLOW BACKBOARD TO BE MOUNTED TO CENTER-STRUT®, PROVIDING FOR REMOVAL OF GOAL WITHOUT REMOVING BACKBOARD

HEIGHT SETTINGS LABEL APPLIED TO SIDE OF HEIGHT ADJUSTER



FLUSH MOUNTED-TYPE SWITCH FURNISHED WITH DUAL (UP-DOWN) KEY OPERATION MOUNTED IN A STAINLESS STEEL COVER PLATE. WIRING DIAGRAM PROVIDED WITH EACH UNIT. KEY SWITCHES MAY BE GANGED IN PAIRS IN ONE COVER PLATE - ONE FOR THE BACKSTOP, ONE FOR THE HEIGHT ADJUSTER.

10'-9" (3.27m)  
TYPICAL LOCATION OF BRACE ATTACHMENT



**WARNING**

SUBSTITUTION OF THIS KEY SWITCH WILL VOID ALL WARRANTIES AND WILL RENDER THE OPERATION OF THE HEIGHT ADJUSTER UNSAFE.

**CAUTION**

KEY SWITCH MUST BE MOUNTED ON THE WALL IN A LOCATION SO THAT THE EQUIPMENT IT IS CONTROLLING IS IN FULL VIEW OF THE OPERATOR.

**00901-506 HEIGHT ADJUSTMENT SYSTEM FOR No. 900 SERIES BACKSTOP w/RECT. BACKBOARD - ELECTRIC OPERATION WITH KEY SWITCH**

PATENT No's. 5,279,496; 6,056,654; 6,537,162. OTHER PATENTS PENDING.

REVISION	DATE	PORTER No.
Carriage Was Hex Head	6-1-02	
		CUSTOMER No.
		DATE
		9-23-1996

**00901-506**  
**CENTER-STRUT® HEIGHT ADJUSTMENT SYSTEM FOR RECTANGULAR BACKBOARD - ELECTRIC OPERATION WITH KEY SWITCH**

THIS PRINT IS THE PROPERTY OF PORTER ATHLETIC EQUIPMENT COMPANY AND MAY NOT BE REPRODUCED WITHOUT WRITTEN PERMISSION

**PORTER®**  
 WORLD LEADER  
 IN QUALITY SPORTS EQUIPMENT  
 2500 S. 25th AVENUE  
 BROADVIEW, ILLINOIS 60155  
 www.porter-ath.com

DRAWING BY  
RJM  
 CHECKED BY  
EAS  
 PAGE No.  
**B-901-506**

# **SPECIFICATIONS**

## **PORTER No. 00901-506 CENTER-STRUT® HEIGHT ADJUSTMENT SYSTEM WITH ELECTRIC KEY SWITCH OPERATION FOR USE ON No. 900 CENTER- STRUT® SERIES BASKETBALL BACKSTOPS WITH RECTANGULAR BACKBOARDS**

**(PATENT No. 5,279,496; 6,056,654 and 6,537,162 – OTHER PATENTS PENDING)**

Height adjustment unit shall be designed for use with No. 900 Center-Strut® series ceiling suspended basketball backstop support systems to provide an adjustable, direct-mount (Center-Strut®) goal attachment system to eliminate any strain on the backboard should a player hang on the front mounted goal (conforms to the latest NCAA recommendation). Height adjustment units without the prescribed direct-mount goal feature will not be approved as equal. Height adjustment feature will allow goal height settings from 8'-0" to the official 10'-0" for use by all age groups. Unit shall be designed for use with any official size (4' x 6' or 3'-6" x 6') Porter rectangular backboard and companion front mount type goal.

Center unitized support frame shall be fabricated by dual, 2-3/16" square heavy-wall zinc plated guide tubes located on 11-3/16" centers. Ends of guide tubes shall be welded to heavy, formed mounting brackets. Heavy formed, die cut steel clamp assemblies (2) shall be provided for securing height adjustment assembly directly to a 6-5/8" O.D. center support structure (No. 900 Center-Strut® series basketball backstops). Outer dual slide tubes shall support heavy structural steel angle sections which extend downward to accept a direct-mount (Center-Strut®) goal mounting system. Slide tube assembly shall be provided with a heavy, formed steel section to attach a special upper backboard support assembly to secure the unit to the upper two corners of the rectangular backboard on standard (5'-6") mounting centers.

Height adjustment unit shall incorporate a compact 115-volt, gear motor type linear actuator with 600 pound thrust capacity to raise and lower the goal height electrically. Motor shall draw 1.4 amps under full load. Integral limit switches shall provide automatic shut off at 8' and 10' goal heights. The motor shall be controlled by a special dual keyed, flush wall-mounted momentary key switch. Switch assembly shall be furnished with a 4-1/2" square stainless steel cover plate for mounting in a masonry wall box by the electrical contractor. (Key switches may be ganged in pairs in one cover plate to control the actuator and the backstop winch – specify requirements). Wiring from junction box on height adjuster frame to key switch shall be provided by the electrical contractor to meet all local code requirements.

Wiring of all electrical components shall be in accordance with local area codes, and in accordance with manufacturer's instructions. All conduit, wiring, junction boxes and components not specified herein shall be furnished and installed by the electrical contractor.

A height setting scale shall be located on the side of the unit to visually determine height settings from 8'-0" to 10'-0" in 3" increments.

Height adjustment frame shall be finished with one coat of flat black enamel. Hardware shall be furnished for mounting unit to a 6-5/8" O.D. vertical support tube.

### **LIFETIME WARRANTY (ADD TO SPECIFICATIONS AS REQUIRED)**

Limited Lifetime warranty on all Porter rectangular backboards when used in conjunction with No. 00901-506 Center-Strut® height adjustment unit installed on a Porter No. 900 Center-Strut® series support structure.