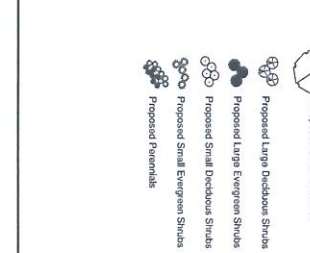


- NOTES**
1. Tree grade, unless noted, shall be finished ground.
 2. All trees shall be planted in accordance with the following specifications:
 3. Preserve trees to be retained. (See Specifications)
- GENERAL NOTES:**
1. All trees shall be planted in accordance with the following specifications:
 2. All trees shall be planted in accordance with the following specifications:
 3. All trees shall be planted in accordance with the following specifications:
 4. All trees shall be planted in accordance with the following specifications:
 5. All trees shall be planted in accordance with the following specifications:
 6. All trees shall be planted in accordance with the following specifications:
 7. All trees shall be planted in accordance with the following specifications:
 8. All trees shall be planted in accordance with the following specifications:
 9. All trees shall be planted in accordance with the following specifications:
 10. All trees shall be planted in accordance with the following specifications:
 11. All trees shall be planted in accordance with the following specifications:
 12. All trees shall be planted in accordance with the following specifications:
 13. All trees shall be planted in accordance with the following specifications:
 14. All trees shall be planted in accordance with the following specifications:
 15. All trees shall be planted in accordance with the following specifications:
 16. All trees shall be planted in accordance with the following specifications:
 17. All trees shall be planted in accordance with the following specifications:
 18. All trees shall be planted in accordance with the following specifications:
 19. All trees shall be planted in accordance with the following specifications:
 20. All trees shall be planted in accordance with the following specifications:
 21. All trees shall be planted in accordance with the following specifications:
 22. All trees shall be planted in accordance with the following specifications:
 23. All trees shall be planted in accordance with the following specifications:
 24. All trees shall be planted in accordance with the following specifications:
 25. All trees shall be planted in accordance with the following specifications:
 26. All trees shall be planted in accordance with the following specifications:
 27. All trees shall be planted in accordance with the following specifications:
 28. All trees shall be planted in accordance with the following specifications:
 29. All trees shall be planted in accordance with the following specifications:
 30. All trees shall be planted in accordance with the following specifications:
 31. All trees shall be planted in accordance with the following specifications:
 32. All trees shall be planted in accordance with the following specifications:
 33. All trees shall be planted in accordance with the following specifications:
 34. All trees shall be planted in accordance with the following specifications:
 35. All trees shall be planted in accordance with the following specifications:
 36. All trees shall be planted in accordance with the following specifications:
 37. All trees shall be planted in accordance with the following specifications:
 38. All trees shall be planted in accordance with the following specifications:
 39. All trees shall be planted in accordance with the following specifications:
 40. All trees shall be planted in accordance with the following specifications:
 41. All trees shall be planted in accordance with the following specifications:
 42. All trees shall be planted in accordance with the following specifications:
 43. All trees shall be planted in accordance with the following specifications:
 44. All trees shall be planted in accordance with the following specifications:
 45. All trees shall be planted in accordance with the following specifications:
 46. All trees shall be planted in accordance with the following specifications:
 47. All trees shall be planted in accordance with the following specifications:
 48. All trees shall be planted in accordance with the following specifications:
 49. All trees shall be planted in accordance with the following specifications:
 50. All trees shall be planted in accordance with the following specifications:
 51. All trees shall be planted in accordance with the following specifications:
 52. All trees shall be planted in accordance with the following specifications:
 53. All trees shall be planted in accordance with the following specifications:
 54. All trees shall be planted in accordance with the following specifications:
 55. All trees shall be planted in accordance with the following specifications:
 56. All trees shall be planted in accordance with the following specifications:
 57. All trees shall be planted in accordance with the following specifications:
 58. All trees shall be planted in accordance with the following specifications:
 59. All trees shall be planted in accordance with the following specifications:
 60. All trees shall be planted in accordance with the following specifications:
 61. All trees shall be planted in accordance with the following specifications:
 62. All trees shall be planted in accordance with the following specifications:
 63. All trees shall be planted in accordance with the following specifications:
 64. All trees shall be planted in accordance with the following specifications:
 65. All trees shall be planted in accordance with the following specifications:
 66. All trees shall be planted in accordance with the following specifications:
 67. All trees shall be planted in accordance with the following specifications:
 68. All trees shall be planted in accordance with the following specifications:
 69. All trees shall be planted in accordance with the following specifications:
 70. All trees shall be planted in accordance with the following specifications:
 71. All trees shall be planted in accordance with the following specifications:
 72. All trees shall be planted in accordance with the following specifications:
 73. All trees shall be planted in accordance with the following specifications:
 74. All trees shall be planted in accordance with the following specifications:
 75. All trees shall be planted in accordance with the following specifications:
 76. All trees shall be planted in accordance with the following specifications:
 77. All trees shall be planted in accordance with the following specifications:
 78. All trees shall be planted in accordance with the following specifications:
 79. All trees shall be planted in accordance with the following specifications:
 80. All trees shall be planted in accordance with the following specifications:
 81. All trees shall be planted in accordance with the following specifications:
 82. All trees shall be planted in accordance with the following specifications:
 83. All trees shall be planted in accordance with the following specifications:
 84. All trees shall be planted in accordance with the following specifications:
 85. All trees shall be planted in accordance with the following specifications:
 86. All trees shall be planted in accordance with the following specifications:
 87. All trees shall be planted in accordance with the following specifications:
 88. All trees shall be planted in accordance with the following specifications:
 89. All trees shall be planted in accordance with the following specifications:
 90. All trees shall be planted in accordance with the following specifications:
 91. All trees shall be planted in accordance with the following specifications:
 92. All trees shall be planted in accordance with the following specifications:
 93. All trees shall be planted in accordance with the following specifications:
 94. All trees shall be planted in accordance with the following specifications:
 95. All trees shall be planted in accordance with the following specifications:
 96. All trees shall be planted in accordance with the following specifications:
 97. All trees shall be planted in accordance with the following specifications:
 98. All trees shall be planted in accordance with the following specifications:
 99. All trees shall be planted in accordance with the following specifications:
 100. All trees shall be planted in accordance with the following specifications:

Plant List & Key

Key	DESCRIPTION	SIZE	QUANTITY
1	Shrub Tree		
2	Ornamental Tree		
3	Shade Tree		
4	Perennial Planting		
5	Shrub Planting		
6	Ornamental Tree		
7	Shade Tree		
8	Perennial Planting		
9	Shrub Planting		
10	Ornamental Tree		
11	Shade Tree		
12	Perennial Planting		
13	Shrub Planting		
14	Ornamental Tree		
15	Shade Tree		
16	Perennial Planting		
17	Shrub Planting		
18	Ornamental Tree		
19	Shade Tree		
20	Perennial Planting		
21	Shrub Planting		
22	Ornamental Tree		
23	Shade Tree		
24	Perennial Planting		
25	Shrub Planting		
26	Ornamental Tree		
27	Shade Tree		
28	Perennial Planting		
29	Shrub Planting		
30	Ornamental Tree		
31	Shade Tree		
32	Perennial Planting		
33	Shrub Planting		
34	Ornamental Tree		
35	Shade Tree		
36	Perennial Planting		
37	Shrub Planting		
38	Ornamental Tree		
39	Shade Tree		
40	Perennial Planting		
41	Shrub Planting		
42	Ornamental Tree		
43	Shade Tree		
44	Perennial Planting		
45	Shrub Planting		
46	Ornamental Tree		
47	Shade Tree		
48	Perennial Planting		
49	Shrub Planting		
50	Ornamental Tree		
51	Shade Tree		
52	Perennial Planting		
53	Shrub Planting		
54	Ornamental Tree		
55	Shade Tree		
56	Perennial Planting		
57	Shrub Planting		
58	Ornamental Tree		
59	Shade Tree		
60	Perennial Planting		
61	Shrub Planting		
62	Ornamental Tree		
63	Shade Tree		
64	Perennial Planting		
65	Shrub Planting		
66	Ornamental Tree		
67	Shade Tree		
68	Perennial Planting		
69	Shrub Planting		
70	Ornamental Tree		
71	Shade Tree		
72	Perennial Planting		
73	Shrub Planting		
74	Ornamental Tree		
75	Shade Tree		
76	Perennial Planting		
77	Shrub Planting		
78	Ornamental Tree		
79	Shade Tree		
80	Perennial Planting		
81	Shrub Planting		
82	Ornamental Tree		
83	Shade Tree		
84	Perennial Planting		
85	Shrub Planting		
86	Ornamental Tree		
87	Shade Tree		
88	Perennial Planting		
89	Shrub Planting		
90	Ornamental Tree		
91	Shade Tree		
92	Perennial Planting		
93	Shrub Planting		
94	Ornamental Tree		
95	Shade Tree		
96	Perennial Planting		
97	Shrub Planting		
98	Ornamental Tree		
99	Shade Tree		
100	Perennial Planting		



<p>Sheet #</p>	<p>Sheet Title</p> <p>Landscape Plan</p>	<p>Issues & Revisions</p> <table border="1"> <thead> <tr> <th>#</th> <th>Date</th> <th>Description</th> </tr> </thead> <tbody> <tr> <td>1</td> <td>06/14/10</td> <td>Client Review</td> </tr> <tr> <td>2</td> <td>05/15/10</td> <td>Revised</td> </tr> <tr> <td>3</td> <td>11/22/10</td> <td>Permit Review</td> </tr> <tr> <td>4</td> <td>01/10/11</td> <td>Per Permit Comments</td> </tr> <tr> <td>5</td> <td>10/17/11</td> <td>Per Village Comments</td> </tr> </tbody> </table>	#	Date	Description	1	06/14/10	Client Review	2	05/15/10	Revised	3	11/22/10	Permit Review	4	01/10/11	Per Permit Comments	5	10/17/11	Per Village Comments	<p>North</p> <p>Project #: B10024</p> <p>Scale: 1" = 20'</p>	<p>Project & Client Name</p> <p>Retail Plaza Building #2</p> <p>LaGrange Road & 131st Street</p> <p>Orland Park, Illinois 60462</p>	<p>Brusseau Design Group, LLC</p> <p>Landscape Architecture • Land Planning • Recreational Planning & Design</p> <p>2075 Pruden Avenue, Hoffman Estates, IL 60152</p> <p>(224) 295-6470 (224) 295-6477 Fax</p>
#	Date	Description																					
1	06/14/10	Client Review																					
2	05/15/10	Revised																					
3	11/22/10	Permit Review																					
4	01/10/11	Per Permit Comments																					
5	10/17/11	Per Village Comments																					

