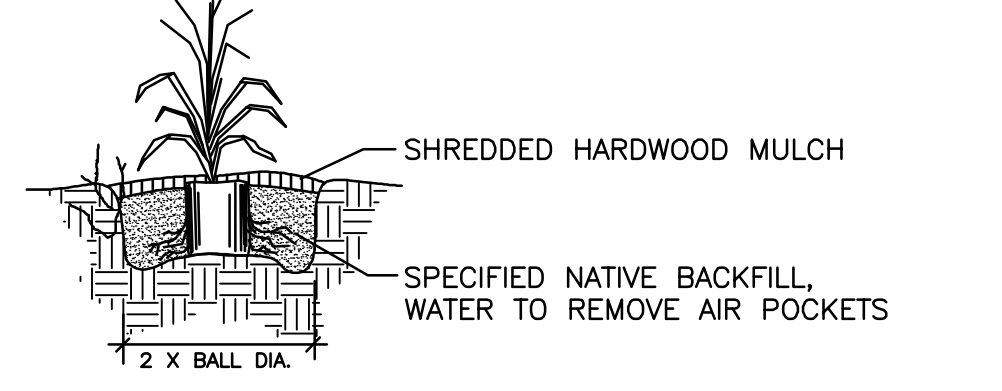


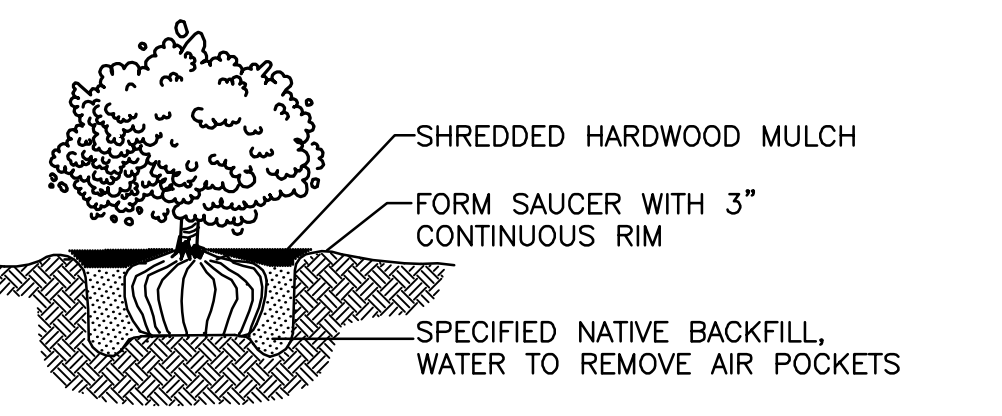
**TYPICAL TREE PLANTING DETAIL**

- ① SIZE OF PIT VARIES W/SIZE OF ROOT BALL.
- ② ROOTBALL TO BE PLACED ON A RAISED PLATFORM OF TAMPED BACKFILL.
- ③ SPREAD FERTILIZER EVENLY IN SAUCER.
- ④ RETAIN ALL LEADERS.



**TYPICAL CONTAINER PLANTING DETAIL**

- ① SIZE OF PIT VARIES W/SIZE OF ROOT BALL.
- ② LOOSEN SOIL IN ROOT BALL AND SPREAD ROOTS PRIOR TO PLACING IN PIT.



**TYPICAL BALLED PLANTING DETAIL**

- ① SIZE OF PIT VARIES W/SIZE OF ROOT BALL.
- ② CUT AND REMOVE UPPER 1/3 OF BURLAP.

**LANDSCAPE NOTES**

1. ALL PLANT MATERIAL SHALL CONFORM TO THE AMERICAN ASSOCIATION OF NURSERYMEN, ANSI Z60.1, CURRENT EDITION.
2. ALL PLANTED AREAS AND LANDSCAPE ISLANDS SHALL RECEIVE A 3" LAYER OF SHREDED HARDWOOD BARK MULCH OVER A 4.1 OZ., WOVEN POLYPROPYLENE, NEEDLE-PUNCHED FABRIC, WEED BARRIER.
3. THE SIZES OF PLANT MATERIAL SHOWN IN THE PLANT CHART ARE THE MINIMUM REQUIRED AT THE TIME OF PLANTING. CONTRACTOR TO PROVIDE INFORMATION AT TIME OF BIDDING IF ALTERNATE MATERIALS ARE SUGGESTED.
4. ALL PARKING ISLANDS TO BE CROWNED 6" AND FILLED WITH 8" MINIMUM DEPTH OF TOPSOIL / COMPOST MIX (40% SOIL & 60% COMPOST) AND 4" MINIMUM DEPTH OF HARDWOOD MULCH.
5. ALL LANDSCAPE MATERIAL INSTALLED SHALL BE MAINTAINED BY THE LANDSCAPE CONTRACTOR UNTIL FINAL ACCEPTANCE BY THE OWNER.
6. ALL DISTURBED AREAS NOT RECEIVING PLANTINGS (INCLUDING RIGHT-OF-WAYS) SHALL RECEIVE EIGHT INCHES OF TOPSOIL, SEED, MULCH, AND WATER UNTIL A HEALTHY STAND OF GRASS IS ESTABLISHED.
7. SEED MIXTURES BELOW SHALL BE APPLIED AS INDICATED. TEMPORARY SEEDING SHALL BE APPLIED WHEN TEMPORARY GRADES REMAIN UNDISTURBED AS INDICATED IN EROSION CONTROL REQUIREMENTS FOR COMPLIANCE WITH NPDES GENERAL PERMIT FOR CONSTRUCTION, OR WHEN END OF GROWING SEASON IS LESS THAN SEVEN DAYS AFTER SEEDING.
8. COBBLESTONE TO BE NATIVE, EARTH COLORS, 3"-10" DIAMETER, PLACED OVER A WOVEN POLYPROPYLENE, NEEDLE PUNCHED FABRIC WEED BARRIER. PLACED THICK ENOUGH AS NOT TO SEE FABRIC BELOW. EXCAVATE AREA DEPTH OF ADJACENT WALK CONCRETE AND BACKFILL WITH COBBLESTONE.

**PERMANENT SEEDING**

- ALL FILL AND CUT SLOPES SHOULD BE SEEDED IMMEDIATELY AFTER CONSTRUCTION. SEED TO THE FOLLOWING GRASS MIXTURES:
- (1) 6# TURF TYPE TALL FESCUE (TRIPLE BLEND)
  - 8# 12-12-12 FERTILIZER (SEE SPECIFICATIONS)
  - 1 1/2 BALES OF STRAW PER 1000 SQUARE FEET ON 2:1 OR STEEPER SLOPES USE:
  - 2# CROWNWITCH
  - (2) 1 1/2# TALL FESCUE
  - 1 1/2# PERENNIAL RYEGRASS
  - 20# 5-10-10 FERTILIZER
  - 2 BALES OF STRAW PER 1000 SQUARE FEET

**TEMPORARY SEEDING**

- 2# TALL FESCUE
- 2# PERENNIAL RYEGRASS
- 5# 12-12-12 FERTILIZER
- 1 1/2 BALES OF STRAW PER 1000 SQUARE FEET

**BOARD APPROVED**

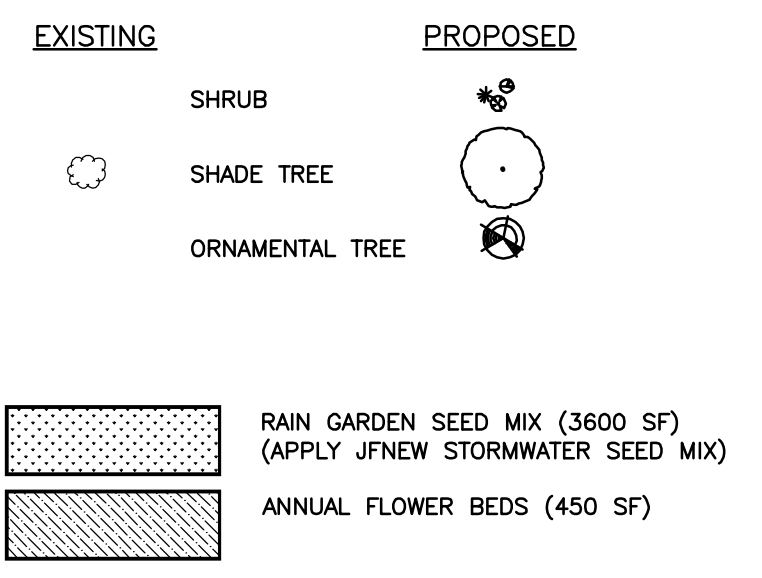
Case No: 2010-0189  
 Date: 11/07/2011  
 W/Conditions: \_\_\_\_\_  
 W/Out Conditions: \_\_\_\_\_ x

VILLAGE OF ORLAND PARK

**PLANT LIST**

KEY	QTY	SCIENTIFIC NAME	COMMON NAME	SIZE	CONDITION	REMARKS
<b>CANOPY TREES</b>						
AS	17	Acer saccharum 'Bonfire'	Bonfire Sugar Maple	2.5" cal.	B&B	Straight Central Leader
GT	15	Gleditsia triacanthos v. inermis 'Shademaster'	Shademaster Honeylocust	2.5" cal.	B&B	Straight Central Leader
QI	15	Quercus imbricaria	Shingle Oak	2.5" cal.	B&B	Straight Central Leader
<b>ORNAMENTAL TREES</b>						
AL	3	Amelanchier laevis	Allegheny Serviceberry	5' ht.	B&B	Single Stem
MB	10	Malus x 'Branzom'	Brandywine Crabapple	5' ht.	B&B	Straight Central Leader
<b>SHRUBS</b>						
CA	27	Claetra alnifolia 'September Beauty'	Summersweet	36"	B&B	
HP	32	Hydrangea paniculata 'Limelight'	Limelight Panicle Hydrangea	36"	B&B	
JH	99	Juniperus squamata 'Blue Carpet'	Blue Carpet Juniper		#2 cont.	5' on center
HL	9	Ilex virginiana 'Little Henry'	Little Henry Sweetpire	24"	#3 cont.	
IM	56	Ilex x meserveae 'Blue Prince / Princess'	Blue Prince / Princess Holly	36"	B&B	1m to 3f
IV	28	Ilex verticillata 'Red Sprite / Jim Dandy'	Red Sprite / Jim Dandy Winterberry Holly	36"	B&B	1m to 3f
PF	23	Potentilla fruticosa 'Goldfinger'	Goldfinger Potentilla	36"	B&B	
PM	80	Pinus mugo 'Compacta'	Compact Mugo Pine	36"	B&B	
RA	100	Rhus aromatica 'Gro-Low'	Gro-Low Fragrant Sumac		#2 cont.	5' on center
TM	37	Taxus x media 'Wardii'	Ward's Anglojap Yew	36"	B&B	
VN	44	Viburnum nudum 'Winterthur'	Winterthur Viburnum	36"	B&B	
<b>ORNAMENTAL GRASSES</b>						
PV	39	Panicum virgatum 'Heavy Metal'	Heavy Metal Switchgrass		#2 cont.	

**LEGEND**



REVISION

DATE

No.

PROJECT No: 70399

DATE 12/7/10

DES. KTC

DR. KTC

CKD.

7635 Interactive Way  
 Suite 100  
 Indianapolis, IN 46276-2727  
 317.299.7500  
 FAX: 317.291.5805

**WOOLPERT**  
 DESIGN | OCCUPANTIAL | INFRASTRUCTURE

**DAVE AND BUSTER'S**  
**ORLAND SQUARE MALL**  
 49 ORLAND SQUARE DRIVE  
 ORLAND PARK, IL 60462

**LANDSCAPE PLAN**

SHEET NO.

**L100**

OPERATES 24 HOURS A DAY  
 365 DAYS A YEAR

**WARNING**  
 CALL BEFORE YOU DIG  
 CALL (800) 692-0123  
 48 hours before you dig  
 (excluding Sat., Sun. & Holidays)

Layout Tab Name: L100\_Images; DB Logo.jpg; Xrefs: 70399-btk.dwg; 70399-p.dwg; 70399-x.dwg  
 Last Saved By: martinie, 8/13/2011 11:07:22 AM  
 G:\DE\Clients\Simon\_Property\_Group\070399 -Orland Park\Arch\Drawgs Design\_Development\70399JAN.dwg Plotted By: Martin, John Plotted: August 3, 2011, 11:07:36 AM