

BOARD APPROVED

Case No: 2011-0514

Date: 10-17-11

W/Conditions: X

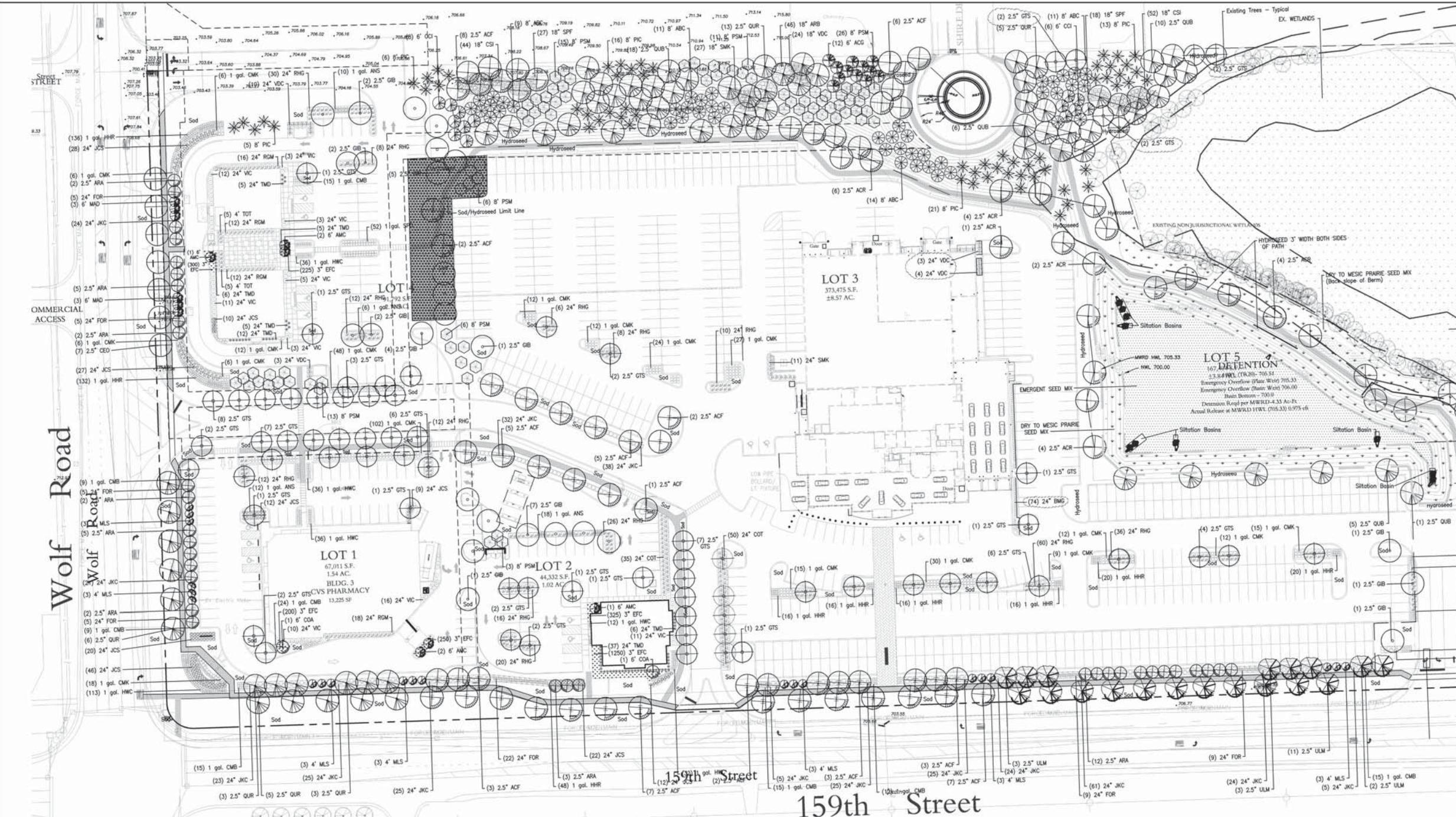
W/Out Conditions: _____

VILLAGE OF ORLAND PARK

Table with botanical names, common names, and lbs./acre for Dry to Mesic Prairie Seed Mix and Emergent Seed Mix. Includes notes on seed mix application and wet prairie species planting.

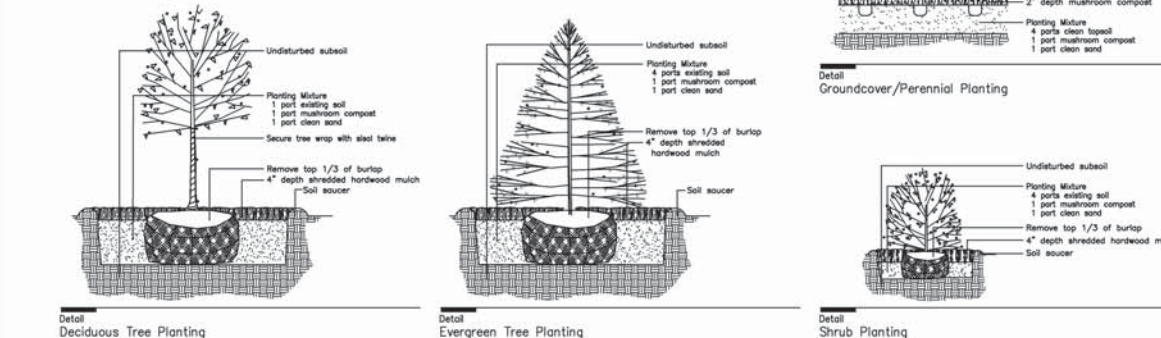
Table with botanical names, common names, and lbs./acre for Emergent Seed Mix. Includes a note on seed mix application.

Seeding Notes: Seed mix to be applied to wet prairie seed area. Topsoil depth to be minimum 12" depth for native planting area. Seed supplied to the site shall be tagged with seed species, weights, and documentation of PLS testing.



Wolf Road

159th Street



Plant List table with columns for Key, Qty, Size, Botanical Name, Common Name, Remarks/Spacing, and additional plant specifications.

Landscape Notes: Size and grading standards of plant materials shall conform to the latest edition of ANSI Z60.1. All plant materials shall be nursery grown stock and shall be free of any deformities, diseases or insect damage.

REVISIONS table with columns for No., Date, and Description.

LANDSCAPE PLAN

RETAIL DEVELOPMENT NEC 159th STREET AND WOLF ROAD ORLAND PARK, ILLINOIS

Craig R. Knoche & Associates Civil Engineers, P.C. logo and contact information. Includes date 3-04-09, file 4041-c40, and sheet number C4.1.