

**MAYOR**  
Keith Pekau

**VILLAGE CLERK**  
John C. Mehalek

14700 S. Ravinia Avenue  
Orland Park, IL 60462  
708.403.6100  
OrlandPark.org



**TRUSTEES**

Kathleen M. Fenton  
James V. Dodge  
Patricia A. Gira  
Carole Griffin Ruzich  
Daniel T. Calandriello  
Michael F. Carroll

05/10/2018

**File Number: 2017-0772**

Mr. Kevin McGee  
President/CEO - Smith Crossing  
10501 Emilie Lane  
Orland Park, IL 60467

**Re: Final Landscape Plan Approval – Smith Crossing Phase 3**

Dear Mr. McGee:

The final landscape plan for Smith Crossing Phase 3 has been reviewed for compliance with Section 6-305 Landscape and Tree Preservation of the Village's Land Development Code (LDC). The landscape plan, titled "Final Landscape Plan", prepared by KimleyHorn and Associates, dated 09/29/2017, last revised 04/23/2018, sheets L1.0, L1.1, L2.0, L2.1, L2.2 and L2.3 and all associated documentation, was approved by the Development Services Department on May 10, 2018. The approved landscape plan is attached to this letter for your reference.

All landscaping for this project shall be installed by June 1, 2019. As per Section 5-112.E.9.e.3 of the LDC, the landscaping for this project will be inspected on at least four (4) separate occasions for compliance with the aforementioned landscape plan. The developer or property owner shall contact the Development Services Department to schedule all landscape inspections. No letter of credit release shall be issued until a final landscape inspection approval has been granted by the Development Services Department.

The plantings in any landscaped area must be properly maintained in order for the landscaped area to fulfill the purposes for which it was established. The obligation for continuous landscape maintenance is binding on the petitioner who received landscape plan approval, to any subsequent property owner(s) or any other parties having a controlling interest in the property.

**The following inspections are required for this project:**

- Landscape Installation Inspection
- Year 1 Inspection (Site Landscaping and Basins)
- Year 2 Inspection (Basins)
- Year 3 Inspection (Basins)\*

\* Additional inspections may be required if inspections reveal landscape deficiencies.

Thank you and please contact me directly to schedule all landscape inspections or with any questions.

Sincerely,



**Mike Mazza, ASLA**

Planner I | Development Services | 14700 Ravinia Avenue | Orland Park, IL 60462 | (O) 708-403-6119 | [mmazza@orlandpark.org](mailto:mmazza@orlandpark.org)

# *Hey and Associates, Inc.*

Engineering, Ecology and Landscape Architecture

*MILWAUKEE, WISCONSIN*

*8755 W. HIGGINS ROAD, SUITE 853*

*CHICAGO, ILLINOIS 60631*

*PHONE (773) 693-9200*

*FAX (773) 693-9200*

*Volo, ILLINOIS*

May 10, 2018

Mike Mazza, ASLA  
Planner, Development Services  
Village of Orland Park  
14700 Ravinia Avenue  
Orland Park, IL 60462

Project No.: 17-0346L

Re: Final Landscape Plan Review – Version 3  
Smith Crossing Expansion  
10501 Emilie Lane

Dear Mike:

We have completed our third Final Landscape Plan review of Smith Crossing Phase III. This review is based upon the following documents, pursuant to requirements of Village Land Development Code Section 6-305 (Landscape and Tree Preservation).

- Response letter, dated May 4, 2018 prepared by Kimley-Horn and Associates, Inc.
- Final Landscape Plan, Foundation Landscape Enlargement Plan, Landscape Materials Lists, and Landscape Notes and Details (4 sheets), most recently dated 4/23/18, prepared by Kimley-Horn and Associates, Inc.
- Landscaping Budget – Final Landscape Plan Estimate, dated May 4, 2018, prepared by Weis Builders
- Monitoring and Management Plan Agreement for Naturalized Landscape Areas (“Plan”), signed 4-26-18

## **REVIEW COMMENTS**

### **General Comments**

This is intended to serve as a supplemental review, building upon Final Landscape Plans and supporting documents previously submitted and reviewed.

## **RECOMMENDATION**

### **Final Landscape Plan – Recommended for Approval**

Mike Mazza  
Smith Crossing  
May 10, 2018  
page 2

All previously identified issues related to the approval of the final landscape plan for this project have been satisfactorily addressed. It is our recommendation that the final landscape plan for Smith Crossing, referenced herein, be approved in conformance with the Village landscape ordinance.

Please contact us with any questions or comments.

Sincerely,

Tim Pollowy, PLA, ASLA  
Senior Landscape Architect





Drawing name: A:\03\168577000\_mh\hsc\p\03\168577000\_L2.2 - LANDSCAPE PLAN.dwg, L2.2, May 04, 2018, 8:10am, by: Tom Busch  
 This document, together with the concepts and designs presented herein, is intended only for the specific purpose and client for which it was prepared. Review of and improper reliance on this document without written authorization and adaptation by Kimley-Horn and Associates, Inc. shall be without liability to Kimley-Horn and Associates, Inc.

**PLANT SCHEDULE**

CANOPY TREES			CODE	QTY	BOTANICAL NAME	COMMON NAME	CONT	CAL	SIZE
	AA2	12	ACER X FREEMANII 'JEFFSRED'	AUTUMN BLAZE MAPLE	B & B	4" CAL MIN	SINGLE STEM		
	CF	4	CARPINUS BETULUS 'FRANZ FONTAINE'	FRANZ FONTAINE HORNBEAM	B & B	4" CAL MIN	SINGLE STEM		
	CF2	2	CARPINUS BETULUS 'FRANZ FONTAINE'	FRANZ FONTAINE HORNBEAM	B & B	2.5" CAL MIN	SINGLE STEM		
	CO	7	CELTIS OCCIDENTALIS	COMMON HACKBERRY	B & B	2.5" CAL MIN	SINGLE STEM		
	CS	9	CATALPA SPECIOSA	NORTHERN CATALPA	B & B	2.5" CAL MIN	SINGLE STEM		
	CS2	5	CATALPA SPECIOSA	NORTHERN CATALPA	B & B	4" CAL MIN	SINGLE STEM		
	GK	3	GYMNOCLADUS DIOICA	KENTUCKY COFFEE TREE	B & B	2.5" CAL MIN	SINGLE STEM		
	GK2	6	GYMNOCLADUS DIOICA	KENTUCKY COFFEE TREE	B & B	4" CAL MIN	SINGLE STEM		
	PE	7	PLATANUS X ACERIFOLIA 'EXCLAMATION' TM	EXCLAMATION LONDON PLANE TREE	B & B	2.5" CAL MIN	SINGLE STEM		
	PE2	5	PLATANUS X ACERIFOLIA 'EXCLAMATION' TM	EXCLAMATION LONDON PLANE TREE	B & B	4" CAL MIN	SINGLE STEM		
	QB	7	QUERCUS BICOLOR	SWAMP WHITE OAK	B & B	2.5" CAL MIN	SINGLE STEM		
	QM	3	QUERCUS MACROCARPA	BURR OAK	B & B	2.5" CAL MIN	SINGLE STEM		
	QM2	12	QUERCUS MACROCARPA	BURR OAK	B & B	4" CAL MIN	SINGLE STEM		
	TD2	7	TAXODIUM DISTICHUM	BALD CYPRESS	B & B	2.5" CAL MIN	SINGLE STEM		
	TM	9	TILIA AMERICANA 'MCKSENTRY'	SENTRY LINDEN	B & B	2.5" CAL MIN	SINGLE STEM		
	TM2	1	TILIA AMERICANA 'MCKSENTRY'	SENTRY LINDEN	B & B	4" CAL MIN	SINGLE STEM		
	UP	6	ULMUS AMERICANA 'PRINCETON'	AMERICAN ELM	B & B	2.5" CAL MIN	SINGLE STEM		
EVERGREEN TREES			CODE	QTY	BOTANICAL NAME	COMMON NAME	CONT	CAL	SIZE
	JE2	3	JUNIPERUS VIRGINIANA	EASTERN RED CEDAR	B & B	6" HT MIN			
	PC	2	PICEA GLAUCA 'CONICA'	DWARF ALBERTA SPRUCE	B & B	6" HT MIN			
ORNAMENTAL TREES			CODE	QTY	BOTANICAL NAME	COMMON NAME	CONT	CAL	SIZE
	AA3	5	AMELANCHIER CANADENSIS 'AUTUMN BRILLIANCE'	AUTUMN BRILLIANCE SERVICEBERRY	B & B	MULTI-TRUNK	6" HT MIN		
	CE	2	CERCIS CANADENSIS	EASTERN REDBUD	B & B	MULTI-TRUNK	6" HT MIN		
	HA3	4	HAMMELIS VERNALIS 'AUTUMN EMBERS'	OZARK WITCHHAZEL	B & B	MULTI-TRUNK	6" HT MIN		
	MR	3	MALUS X 'ROYAL RAINDROPS'	ROYAL RAINDROPS CRABAPPLE	B & B	2.5" CAL MIN	SINGLE STEM		
2 GALLON SIZE ORNAMENTAL GRASSES			CODE	QTY	BOTANICAL NAME	COMMON NAME	CONT	SPACING	SIZE
	SL2	11	SCHIZACHYRIUM SCOPARIUM	LITTLE BLUESTEM GRASS	2 GAL	SEE PLAN			
DECIDUOUS SHRUBS			CODE	QTY	BOTANICAL NAME	COMMON NAME	CONT	SPACING	SIZE
	AM	26	ARONIA MELANOCARPA 'MORTON' TM	IROQUIS BEAUTY BLACK CHOKEBERRY	-	SEE PLAN	24" HT MIN		
	AR	28	ARONIA ARBUTIFOLIA	RED CHOKEBERRY	-	SEE PLAN	24" HT MIN		
	CI	26	CORNUS SERICEA 'ISANTI'	ISANTI REDOSIER DOGWOOD	-	SEE PLAN	24" HT MIN		
	DG	70	DIERVILLA RIVULARIS 'G2X86411'	KODIAK RED BUSH HONEYSUCKLE	-	SEE PLAN	24" HT MIN		
	HA	28	HYDRANGEA ARBORESCENS 'ANNABELLE'	ANNABELLE SMOOTH HYDRANGEA	-	SEE PLAN	24" HT MIN		
	HG	27	HYDRANGEA QUERCIFOLIA 'GATSBY GAL'	GATSBY GAL OAKLEAF HYDRANGEA	-	SEE PLAN	36" HT MIN		
	IL	57	ITEA VIRGINICA 'LITTLE HENRY' TM	LITTLE HENRY VIRGINIA SWEETSPIRE	-	SEE PLAN	18" HT MIN		
	R3	27	ROSA X 'RADRAZZ'	KNOCK OUT SHRUB ROSE	-	SEE PLAN	18" HT MIN		
	RG	29	RIBES ALPINUM 'GREEN MOUND'	GREEN MOUND ALPINE CURRANT	-	SEE PLAN	18" HT MIN		
EVERGREEN SHRUBS			CODE	QTY	BOTANICAL NAME	COMMON NAME	CONT	SPACING	SIZE
	JB	51	JUNIPERUS SABINA 'BLUE FOREST'	BLUE FOREST JUNIPER	-	SEE PLAN	24" SPREAD		
	JF	30	JUNIPERUS CHINENSIS 'SEA GREEN'	SEA GREEN JUNIPER	-	SEE PLAN	24" SPREAD		
	PC2	44	PINUS MUGO 'VALLEY CUSHION'	VALLEY CUSHION MUGO PINE	-	SEE PLAN	18" HT MIN		
	TD	64	TAXUS X MEDIA 'DENSIFORMIS'	DENSE YEW	-	SEE PLAN	24" HT MIN		

PERENNIALS AND ORNAMENTAL GRASSES			CODE	QTY	BOTANICAL NAME	COMMON NAME	CONT	SPACING
	AM2	150	ALLIUM X 'MGSMPKB13'	SUMMER PEEK A BOO ALLIUM	1 GAL	18" o.c.		
	AR2	80	ASTILBE X ARENDsii 'RED SENTINEL'	FALSE SPIRAEA	1 GAL	18" o.c.		
	AW	91	ASTER X 'WOOD'S PINK'	ASTER	1 GAL	18" o.c.		
	CZ	89	COREOPSIS VERTICILLATA 'ZAGREB'	ZAGREB THREAD LEAF COREOPSIS	1 GAL	18" o.c.		
	DP	86	DESCHAMPSIA CESPITOSA 'PIXIE FOUNTAIN'	DWARF TUFTED HAIR GRASS	1 GAL	18" o.c.		
	EK	126	ECHINACEA PURPUREA 'KIM'S KNEE HIGH' TM	PURPLE CONEFLOWER	1 GAL	18" o.c.		
	FE	114	FESTUCA GLAUCA 'ELIJAH BLUE'	BLUE FESCUE	1 GAL	18" o.c.		
	HA2	127	HAKONECHLOA MACRA 'ALL GOLD'	JAPANESE FOREST GRASS	1 GAL	18" o.c.		
	HP	86	HEUCHERA X 'PALACE PURPLE'	PALACE PURPLE CORAL BELLS	1 GAL	18" o.c.		
	NW	93	NEPETA X FASSENII 'WALKERS LOW'	WALKERS LOW CATMINT	1 GAL	18" o.c.		
	PB	80	PENNISSETUM ALOPECUROIDES 'BURGUNDY BUNNY'	BURGUNDY BUNNY DWARF FOUNTAIN GRASS	1 GAL	18" o.c.		
	PG	115	PACHYSANDRA TERMINALIS 'GREEN CARPET'	JAPANESE SPURGE	2" PLUG	12" o.c.		
	SA	89	SESLERIA AUTUMNALIS	AUTUMN MOOR GRASS	1 GAL	18" o.c.		
	SH	149	SPOROBOLUS HETEROLEPIS	PRAIRIE DROPSEED	1 GAL	18" o.c.		
	SL	95	SCHIZACHYRIUM SCOPARIUM	LITTLE BLUESTEM GRASS	1 GAL	18" o.c.		
GROUND COVERS			CODE	BOTANICAL NAME	COMMON NAME	CONT	SPACING	
	DD		DETENTION SEED	DETENTION BASIN SEED MIX				
	ST		SEED SEED	TURF SEED				

**LANDSCAPE PLAN APPROVAL**  
 THIS LANDSCAPE PLAN HAS BEEN REVIEWED FOR COMPLIANCE WITH SECTION 5-305 OF THE VILLAGE OF ORLAND PARK'S LAND DEVELOPMENT CODE.  
 ADDITIONAL APPROVAL INCLUDES MONITORING AND MANAGEMENT PLAN / TREE MITIGATION PLAN.  
 FILE # 168577000-0792  
 APPROVAL DATE: 05/10/18

**LANDSCAPE MATERIALS LISTS**

**SKILLED NURSING SHORT TERM REHABILITATION CENTER**  
 Washington and Jane Smith Community  
 Orland Park, Illinois

**Kimley-Horn**  
 © 2018 KIMLEY-HORN AND ASSOCIATES, INC.  
 1111 UNDERWOOD AVE., SUITE 300  
 Lisle, IL 60532  
 PHONE: 630-497-5550  
 WWW.KIMLEY-HORN.COM

**Architecture**  
 1111 UNDERWOOD AVE., SUITE 300  
 Lisle, IL 60532  
 630.497.5550  
 WWW.AGARCH.COM  
 Architecture  
 Engineering  
 Planning

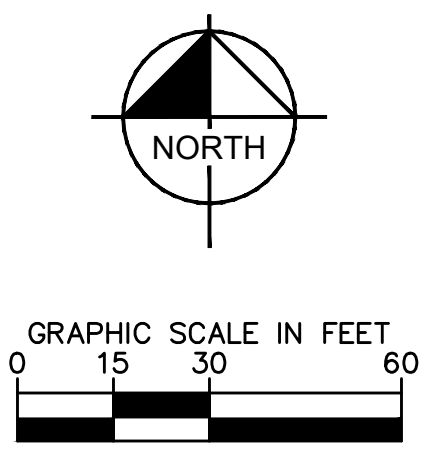
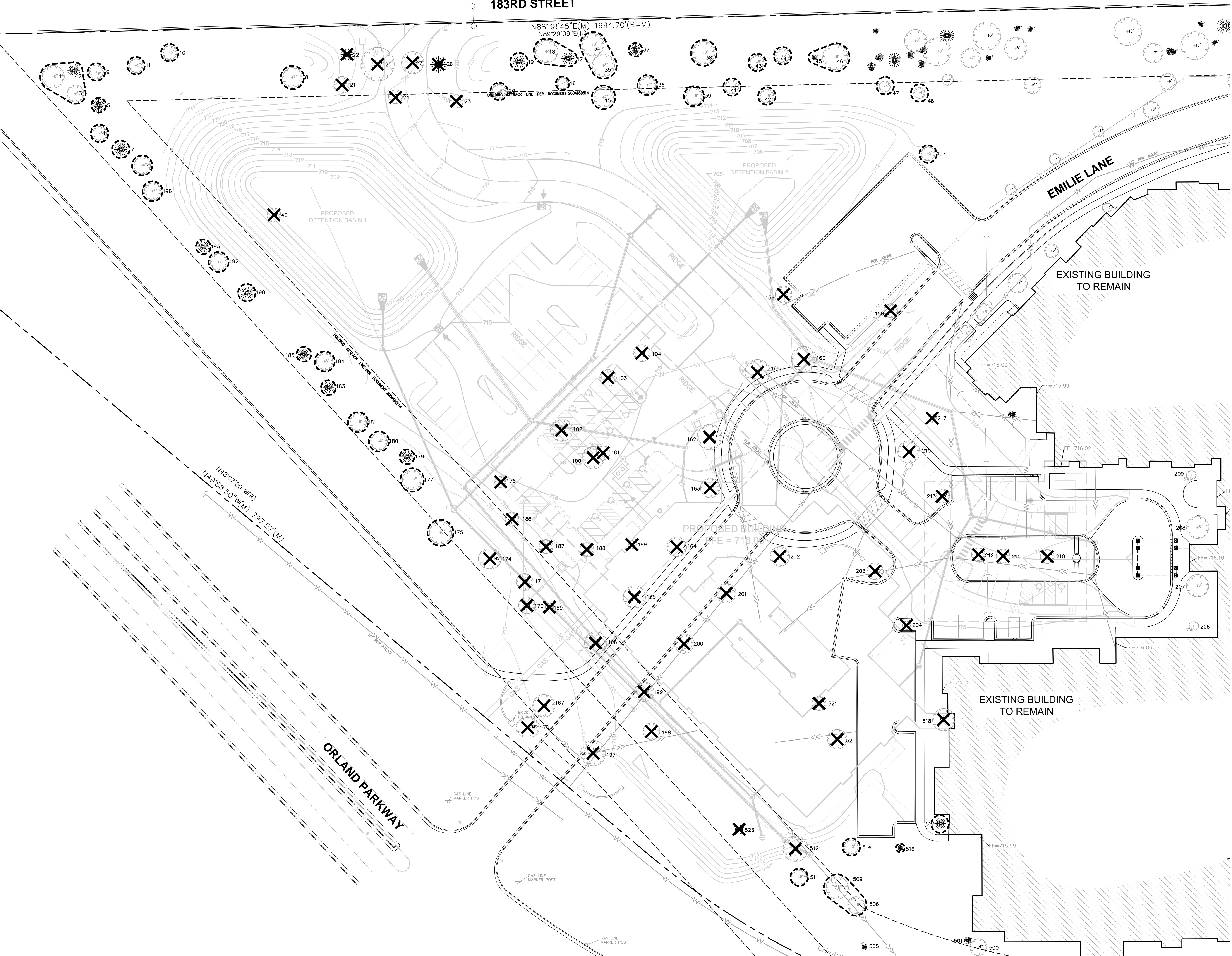
**REVISIONS**

1	REVISED PER VILLAGE COMMENTS	11/02/17
2	ISSUED FOR BID	01/25/18
3	REVISED PER ARCH COORDINATION	02/03/18
4	REVISED PER VILLAGE COMMENTS	02/03/18
5	REVISED PER VILLAGE COMMENTS	04/03/18
6	REVISED PER VILLAGE COMMENTS	04/23/18

DRAWN BY: **BDW**  
 DATE: **29 SEPT 2017**  
 PROJECT: **168577000**  
 SHEET NO.: **L2.2**



Drawing name: K:\GIS\_LDCV\168577000\_ambrosia\orlandpark\12 Design\CAD\plansheets\L1.0 - TREE REMOVAL.dwg L1.0 Apr 09, 2018 2:00pm by: Tom Bunkle  
 This document, together with the concepts and designs presented herein, is intended only for the specific purpose and client for which it was prepared. Reuse of and improper reliance on this document without written authorization and adaptation by Kimley-Horn and Associates, Inc. shall be without liability to Kimley-Horn and Associates, Inc.



- LEGEND**
- TREE LOCATION AND NUMBER
  - TREE TO BE REMOVED
  - TREE PROTECTION FENCE

# TREE REMOVAL PLAN

**Smith CROSSING**  
 SKILLED NURSING SHORT TERM REHABILITATION CENTER  
 Washington and Jane Smith Community  
 Orland Park  
 Illinois

**Kimley»Horn**  
 Architecture  
 1414 UNDERWOOD AVE.  
 WAUKATONA, WI 53113  
 414.431.3131 TEL  
 414.431.0331 FAX  
 WWW.AHARCH.COM

Architecture  
 Engineering  
 Planning

**REVISIONS**

1	REVISED PER VILLAGE COMMENTS	11/04/17
2	ISSUED FOR BID	01/25/18
3	REVISED PER ARCH COOPERATION	02/13/18
4	REVISED PER VILLAGE COMMENTS	03/23/18
5	REVISED PER VILLAGE COMMENTS	04/10/18

DRAWN BY  
 BDW  
 DATE  
 29 SEPT 2017  
 PROJECT  
 168577000  
 SHEET NO.  
 L1.0



