



ORLAND PARK LANDSCAPE ARCHITECT SERVICES

RFP #21-055



SUBMITTED BY
V3 COMPANIES





October 21, 2021

Village of Orland Park
Office of the Village Clerk
14700 South Ravinia Avenue
Orland Park, Illinois 60462

Proposal: RFP 21-055 | Village of Orland Park Landscape Architect Services

V3 Companies, Ltd. (V3) is pleased to submit this proposal in response to the above-mentioned RFP for the Village of Orland Park Landscape Architect and Wetland Permit Review services. The V3 Team has over a decade of experience in providing planning, assessment, design, restoration and construction services to the Village of Orland Park. The V3 Team put forward for this RFP has more than 100 years of combined experience in all aspects of landscape architecture design, reviews, and planning as well as wetland permitting, wetland delineations and wetland reviews throughout the Chicago metropolitan area. Our field inspection team is located in Woodridge, Illinois and is readily available to perform the required tasks as outlined in the Village of Orland Park's Landscape Architect Services request for proposal dated September 30, 2021.

For many years V3 has been committed to delivering economic vitality, amenities, and professional services to the Village of Orland Park. We've done this through our work on many projects such as the design/build renovation of the John Humphrey Complex, improvements to the many "green" areas and native stormwater basins throughout the Village that promote an outdoor experience, and our streetscape improvement on LaGrange Road. We understand the vision that the Village has for its residents and community. V3's experience, dedication, professionalism, expertise, familiarity, and proximity to the Village of Orland Park, combined with our expertise in landscape architecture and wetland services are significant reasons to select V3 for this important role and position with the Village.

Our submittal includes a team of professionals to execute the work of scope. V3 will lead the effort with our in-house landscape architect and wetland/ecological science teams. V3's construction and construction oversight expertise also add value to the requested services of this RFP. V3 stands above because of our unique and expert collaborative professionals. V3 is committed to the Village of Orland Park and we are grateful for this opportunity to become a part of your team.

We appreciate the opportunity to present our qualifications and proposal and are available to answer any questions or to further expand upon this submittal. We look forward to working with the Village and are available immediately to begin work. If you have any questions regarding our qualifications, please feel free to contact Heidi Voirol on her cell at 630.936.0326 or via email at hvoirol@v3co.com.

We have read and agree to the terms and conditions of doing business with the Village of Orland Park, as outlined in the request for proposal dated September 30, 2021.

Sincerely,
V3 COMPANIES, LTD.

Gregory V. Wolterstorff, P.E.
Vice President/Director of Natural Resources



 **POINT OF CONTACT**

**HEIDI VOIROL, P.E., LEED AP®
BD+C**

Project Manager

Direct: 630.729.6177

Mobile: 630.936.0326

Email: hvoirol@v3co.com

 **SUBMITTED TO**

Village of Orland Park
Office of the Village Clerk
14700 S. Ravinia Avenue
2nd Floor
Orland Park, Illinois 60462

TABLE OF CONTENTS

COVER LETTER

Section 1: OPERATING HISTORY

Section 2: PROJECT EXPERIENCE

- *V3's Experience in Orland Park*
- *Additional Relevant Project Experience*

Section 3: QUALIFICATIONS

- *Organizational Chart*
- *Team Roles*
- *Team Resumes*

Section 4: TECHNICAL PROPOSAL

- *Project Understanding & Approach*

Section 5: REQUIRED FORMS

- *Proposal Summary Sheet*
- *Certificate of Completion*
- *References*
- *Insurance Requirements*

Section 6: HOURLY RATES*

**Separate Attachment in Pricing Section*



SECTION 1

OPERATING HISTORY

A SOLID HISTORY & GREAT REPUTATION



Project Manager Heidi Voirol has extensive experience with managing multi-discipline project teams on municipal improvement, transportation and land development projects.

FIRM CAPABILITIES

- Landscape Architecture
- Planning
- Sustainable Design & Consulting
- Site Civil
- Water Resources
- Wetlands & Ecology
- Environmental
- Geosciences
- Municipal Consulting
- Surveying
- Contracting & Construction Management
- Construction Engineering
- Highways & Traffic
- Railroads
- Structural

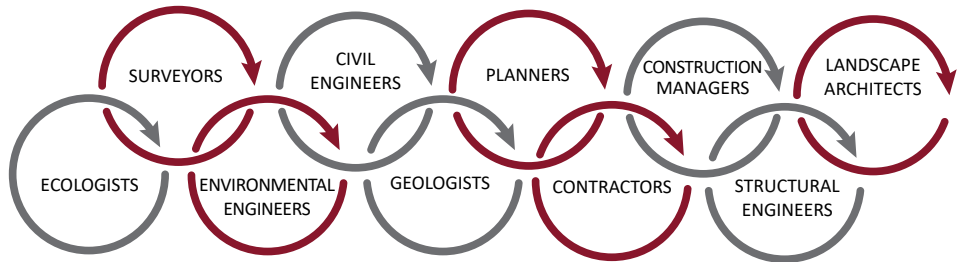
OPERATING HISTORY & TEAM OVERVIEW

Our name, V3, is based on the three Latin words Visio, Vertere, Virtute that represent what we bring to every project, “THE VISION TO TRANSFORM WITH EXCELLENCE.”



Launched in 1983 as SDI Consultants and renamed V3 Companies in 1997, V3 is employee owned, providing our team the opportunity to serve you from an owner’s perspective. Our passion is applying our professionalism to your needs in order to transform your visions into reality. We’ve demonstrated our unique ability to create functional landscapes that highlight natural resources in our enclosed project experience. And we believe the highly experienced, multi-disciplinary team we’ve assembled for this project makes us the best team to work alongside you to meet the needs of Orland Park.

We currently have 290 employees throughout offices in Illinois, Indiana, Ohio, Canada and Haiti. The firm is a privately-held corporation with a broad-based ownership comprised solely of employees of the firm.



Our integrated team of landscape architects, civil engineers, natural resource scientists, and construction estimators bring all of the expertise you need to review landscape plans and wetland permit submittals. From visualization through implementation, we help transform your visions into reality. We look for opportunities to create functional beauty and ways to connect people to people and nature, while maintaining a focus on your budgetary and maintenance requirements. Ultimately, we help our clients create more resilient communities.



SECTION 2

PROJECT EXPERIENCE



V3's Landscape Architecture Group has performed internal code review for municipal projects in Illinois, Indiana, and Ohio. The Group has designed parks, trails, rights-of-way, and other quality of life improvements for dozens of projects ranging from the smallest site design to community-wide master plans. Collaboration between the landscape and wetland groups at V3 is ongoing and makes us your preferred partner for bringing people and the natural environment together in ways that improve community quality of life.

V3's wetland team and stormwater/hydraulic engineers have been performing wetland and floodplain reviews as well as wetland hydrology reviews for more than 14 years. V3's experience with these types of reviews have included, but are not limited to, wetland boundary field verifications, review of wetland delineation reports, review of wetland and buffer permit applications, reviews of indirect wetland impacts (hydrology), and the review of wetland mitigation and BMP designs. This experience in conducting wetland, floodplain, and stormwater reviews has provided V3 with the experience of working closely with the administrators of local county stormwater ordinances, municipal stormwater administrators and project engineers.





V3's Experience in Orland Park

FAMILIARITY WITH YOUR LANDSCAPE

The V3 Team has over a decade of experience in providing planning, assessment, design, restoration and construction services to the Village of Orland Park.

The key Village projects described below demonstrate our connection to the Orland Park community. They also demonstrate the V3 Team ability to provide unique solutions, technology and innovation and cost savings to benefit the residents of Orland Park. The Village's goals for landscape aesthetics and natural area beauty will be translated directly into V3's review and inspection of various projects and developments across the Village.



JOHN HUMPHREY SPORTS COMPLEX RENOVATION

V3 completed the 2020 design/build renovation of the 12 acre John Humphrey Sports Complex. The park was originally constructed in the 1970's and significant settlement and drainage concerns impacted ball field play and storm event recovery. The central plaza, five baseball fields and two football fields were redesigned and reconstructed including mass grading, drainage improvements, new irrigation and new hardscapes around the renovated 1500 SF concession and restroom building.

V3 worked closely with the Village Parks Department to address various park and play concerns and accomplish this project within the budget. ***The V3 Team brings all aspects of planning, design and construction to serve the Village – great planning influences best design which translates into cost effective construction.***



BASIN BEST PRACTICES PROGRAM & BASIN IMPROVEMENTS

V3 was selected in 2011 to assist the Village of Orland Park in developing a Basin Best Practices Program which identified restoration and long term maintenance goals for the Village owned stormwater facilities. V3 provided visual assessment, restoration recommendations and cost estimates on 25 of the highest priority ponds in the village. Many of these ponds were located within Village owned parks. Since that time V3 has designed and implemented restoration (dredging, bank stabilization of severe erosion issues, vegetative restoration, etc.) and completed annual maintenance of 35 stormwater basins across the Village.

The intent of this long term program is to revitalize the Village stormwater basins, educate the Public Works and Park Department staff on best practices for natural area maintenance and native vegetation, and provide sustainable and valuable places for the residents of Orland Park to enjoy nature, wildlife and water in harmony. The V3 Team brings this knowledge and expertise to harmoniously integrate these values of nature and people within the Parks Master Plan for areas that are determined to be passive recreation zones. ***V3 can seamlessly provide places of value which tie people, parks and nature together for community benefit.***



LAGRANGE ROAD CORRIDOR AESTHETIC ENHANCEMENTS

The Illinois Department of Transportation was completing a 6.5 mile long reconstruction of LaGrange Road through the Village of Orland Park. This primary commercial/retail corridor supports more than 70,000 vehicles per day and is front door access to many of the business and restaurants in the Village. The aesthetic enhancements of LaGrange Road included: widened/decorative sidewalks, raised brick median walls, monument signage, electrical provisions for holiday lighting, irrigation improvements and landscaping enhancements. V3 provided a unique construction management at-risk delivery method to accomplish the aesthetic improvements which delivered over \$1 million in cost savings on the project. The V3 Team understands the importance of great spaces and aesthetic enhancements for the Village. ***V3 and the Village were able to work as one team to phase the \$10 million dollars of enhancements into three fiscal years enabling the Village to free up funds for additional Village wide projects.***



MWRD STORMWATER GREEN GUIDES

COOK COUNTY, ILLINOIS

- V3 developed two green infrastructure “how to” manuals, one for homeowners and a second for municipalities, developers and other professionals.
- The Green Neighbor Guide, written for homeowners, provided step-by-step installation guidance for a number of stormwater best management practices (BMP), with a goal of allowing a homeowner to understand different options for private property stormwater practices such as rain gardens or permeable pavements; choose the best application for the specific property conditions; and self-perform installation, ultimately reducing runoff and reducing flooding.
- The Green Guide for Professionals provided similar information, but geared toward a technical audience for larger sites including private residential and commercial developments, schools and institutions, parks and transportation right-of-ways. It is a supplement intended to empower designers to maximize the utility of green infrastructure in Cook County as well as provides clarification to the MWRD’s “Technical Guidance Manual for the Implementation of the Watershed Management Ordinance.” The guide contains individual discussions by BMP type, including: implementation issues relevant to design, habitat benefit, construction and inspection, short- and long-term maintenance as well as cost. Appendices provide example checklists for construction inspection, short term maintenance and long-term maintenance. Also included in the appendices are plant lists with growth characteristics and seasonal photos to aide designers and maintenance contractors in the selection and maintenance.



CLIENT

Richard Fisher, Metropolitan Water Reclamation District of Greater Chicago
312.751.5479
FisherR@mwr.org



SERVICES

- Complete Green Streets Design
- Design Standards Manual
- Erosion & Sediment Control Design, Inspection & Management
- Hydrologic & Hydraulic Analysis
- Integrated Stormwater Management
- LEED Certification Assistance
- MWRD Permitting Assistance
- Natural Area Planting Design, Specification, Construction & Monitoring
- Permitting Strategy Assistance
- Public Outreach
- Stormwater Management Design & Permitting Assistance
- Stormwater Pollution Prevention Plan Reporting
- Stream Restoration & Bank Stabilization Design/Build & Management
- Sustainable Site Design
- Sustainable Site Design Services



DEVELOPMENT REVIEW & INSPECTION SERVICES

WOODRIDGE, ILLINOIS

- V3 Companies was retained by the Village of Woodridge to provide Village engineer services, including plan reviews and inspections.
- Our team reviews plans to assure compliance with the Village ordinances and standards, as well as those of DuPage County.
- Our reviews include a variety of different areas including site access, parking lots, fire lanes and fire truck accessibility, handicap accessibility, general site grading, watermain and sanitary sewer design, utility service lines, site lighting, stormwater management/detention, erosion control, environmental issues, landscaping and easement requirements.



CLIENT

Chris Bethel, Director of Public Works Village of Woodridge
630.719.4753
cbethel@vil.woodridge.il.us



SERVICES

- *Construction Inspection*
- *Development Plan Reviews*
- *Utility Reviews*
- *Grading Plan Review*
- *Stormwater & Flood Management Reviews*
- *Village & County Code Compliance*



MUNICIPAL CODE COMPLIANCE REVIEW SERVICES

CHICAGO, ILLINOIS

- V3 was retained in 2003 to provide outsourced code compliance review services.
- Worked with the City to establish and refine the checklists to be utilized in the review of 11 individual design disciplines.
- Attend kick-off meetings to assure full understanding of proposed scope of work and to establish project goals and deadlines.
- Reviews are performed within the City's web-based drawing management system, ProjectDox. Comments are provided by written description and supported by electronic annotations on the drawings.
- Continuous coordination was required with the City, developer, design team and V3's subconsultants review team, establishing and maintaining the project schedule and clarifying review comments.
- All reviews were completed within three weeks/two weeks.
- Certificate of compliance was issued upon completion of each project.
- Under this contract, V3 took on special assignments, including stormwater reviews, development of the City's current porch design guidelines and performing life/safety inspections and deep foundation inspections.



CLIENT

Sophie Martinez, Project Administrator,
City of Chicago Department of Buildings
312.744.7862
sophiemartinez@cityofchicago.org



SERVICES

- *Code Compliance Reviews for Large & Complex Projects*
- *Architectural Reviews*
- *Structural Reviews*
- *Civil/Site Reviews*
- *Fire Prevention Reviews*
- *Accessibility Reviews*
- *Electrical Reviews*
- *Plumbing Reviews*
- *HVAC Reviews*
- *Refrigeration Reviews*
- *Earth Retention & Deep Foundation Reviews*
- *Geotechnical/Office of Underground Coordination Reviews*
- *Coordination Meetings with City Staff & Developer Design Teams*
- *Coordination & Management of Subconsultant Review Firms*



DEVELOPMENT PLAN REVIEW SERVICES

ROMEOVILLE, BOLINGBROOK & VILLA PARK, ILLINOIS

- V3 provides engineering services to the listed municipalities to review a wide variety of residential, commercial and industrial developments. These services cover a wide spectrum of engineering disciplines and areas of specialization and are provided on an on-call basis for individual projects.
- Applicable ordinances, standards and policies are reviewed to compile checklists for applications related to preliminary and final plats of subdivision, concept plans, preliminary and final engineering plans, stormwater management reports, NPDES Phase II plans, landscape plans, lighting and photometric plans, traffic signal plans, soils reports, wetlands reports, cost estimates and other supporting documents.
- Updated regularly, the checklists assure that the most current ordinances and standards are being enforced. These checklists also cover the applicable requirements of other public agencies, including county, state and federal agencies and departments.
- Within one to three weeks of receiving an application, a field investigation of the proposed site is performed and followed by a technical review and draft letter summarizing all non-conforming items.
- Upon receipt of client comments, the final review letter is prepared and distributed to the Village, the developer and the design engineer.



CLIENT

Jonathan Zabrocki, Village Engineer,
Village of Romeoville
815.886.7200
jzabrocki@reld.com
Villages of Bolingbrook & Villa Park



SERVICES

- Residential, Commercial & Industrial Development Plan Reviews
- Concept, Preliminary & Final Engineering Plan Reviews
- Preliminary & Final Plat Reviews
- Grading Plan Reviews
- Underground Utility Reviews
- Stormwater Management Reviews
- Floodplain & Floodway Reviews
- Erosion Control Plan Reviews
- Landscape Plan Reviews
- Wetland Reviews
- Traffic Study Reviews
- Traffic Signal Plan Reviews
- Lighting & Photometric Plan Reviews
- ADA Compliance Reviews
- Construction Observation
- As-Built Plan Reviews



DURKEES RUN STORMWATER PARK

LAFAYETTE, INDIANA

- Durkees Run Stormwater Park retrofitted underutilized tennis courts adjacent to Lafayette Jefferson High School into a park that manages the local watershed, is a destination on the Lafayette trails system, and serves as an outdoor classroom for the high school.
- The local watershed, incorporated into the park, accounts for approximately 10% of the overall Durkees Run interceptor area and removes 2.8 million gallons per year from the combined sewer system.
- Opportunities for public outreach and education were realized, due to the park's location, for the school and area residents. Interactive features include an outdoor classroom amphitheater, ADA accessible boardwalks and overlooks, signage and fabricated landscape features that serve to educate users on stormwater management.
- The park also includes minimal sewer separation techniques to create a heavily landscaped green infrastructure system in a centralized setting allowing public interaction.
- Our team provided total project delivery services as part of a larger public works project included in the City's long term control plan for combined sewer abatement. The project team provided an open book contract, partnering with the City to deliver a guaranteed maximum price performance design build process using the State of Indiana's Energy Savings/Performance Contracting Legislation.
- We provided all direct labor and equipment to construct the bioretention basins, constructed wetland basins and upland prairie buffer areas including all engineered soil amendments, native seed and plant installation, native trees and shrubs and temporary erosion control measures. We also provided maintenance services for these vegetated systems.



CLIENT & CONTACT

Brad Talley, Director of Lafayette Renew, Butler, Fairman & Seufert Engineers & Lafayette Renew
765.807.1050
btalley@lafayette.in.gov



PROJECT HIGHLIGHTS

- *6,500 SF permeable pavers*
- *35,000 SF wetlands*
- *18,877 native plugs, shrubs, grasses and trees*



SUNSET PARK GREEN INFRASTRUCTURE BASIN

MIDDLETOWN, OHIO

- The Bulls Run to Sunset Park Green Infrastructure Basin project is part of the long-term control plan (LTCP) for the City of Middletown's consent decree to control combined sewer overflows.
- The LTCP requires 1,800 linear feet of storm sewer and a one-acre green infrastructure basin that provides up to nearly a million gallons of storage.
- The purpose of this project is to divert stormwater from the Bulls Run watershed to the basin and hold, treat and slowly release the stormwater back into the combined sewer.
- This is a complicated project that includes several areas of expertise including site planning, stormwater controls, landscape architecture, general civil, public park playground equipment placement, site furnishing placement and roadway and parking lot restoration. V3 coordinated all of these separate pieces into one cohesive project.
- This project is in a crowded corridor and is affected by conflicts with other utilities including an existing watermain. This became an opportunity to replace the aging watermain concurrently with installation of the new storm sewer, thus limiting inconvenience to the surrounding neighborhood.



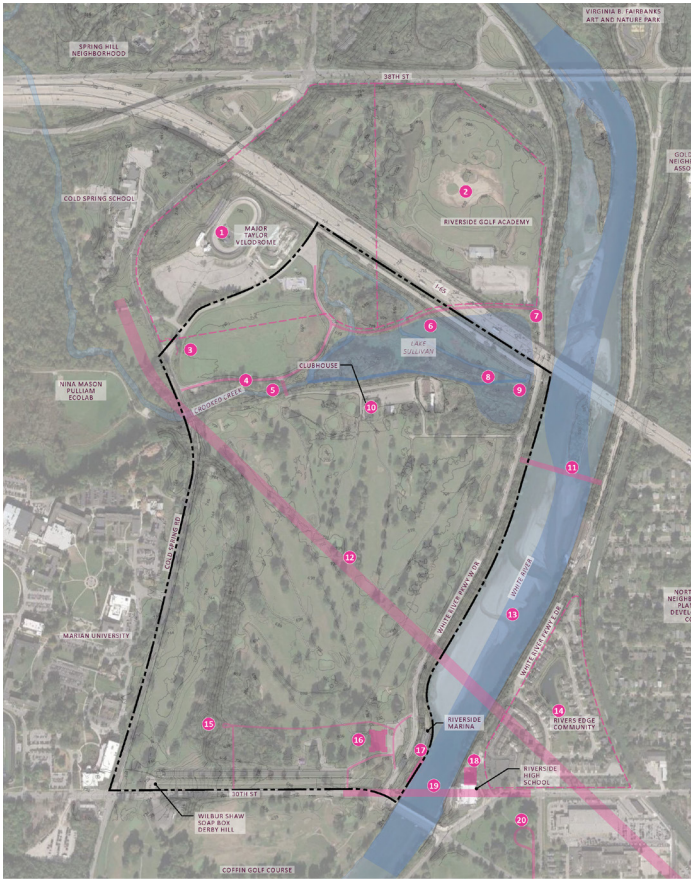
CLIENT

Scott Tadych, Public Works Director
City of Middletown
513.425.7989
scott@cityofmiddletown.org



SERVICES

- *Hydrologic & Hydraulic Analysis*
- *Landscape Architecture*
- *Bid Documents Assistance & Preparation*
- *Grading Design & Earthwork Analysis*
- *EPA Notice of Intent Assistance*
- *Neighborhood Park Amenities & Site Furnishing Design*
- *Preparation of Construction Documents*
- *Open Bid Phase Assistance*
- *Storm & Sanitary Sewer Design*
- *Watermain Design*



RIVERSIDE ADVENTURE PARK

INDIANAPOLIS, INDIANA

- Riverside Regional Park is one of Indianapolis's premier urban parks and is located along the White River which flows through the heart of the city providing an opportunity to commune with nature within the city context.
- As part of the master plan vision, Indy Parks is transforming the former Riverside Golf Course, which was largely segregated since its opening at the turn of the 20th century, into a park for all.
- At the end of 2019, the City of Indianapolis closed Riverside Golf Course and hired a team led by V3 to develop a conceptual design for the adventure park. V3 performed an inventory of the site's natural resources, existing conditions and researched the site's history.
- The project kicked off at the start of the Covid-19 pandemic, and inspired the team to creatively design a new way to safely engage with residents across the 200-acre site. The site was also activated to draw visitors seeking outdoor experiences in the pandemic.
- Five temporary art sculptures were installed and an open house event drew nearly 500 community participants to the park for tours, performances and food.
- Once the program of activities for the park was confirmed, V3 utilized an analysis of the site to help IndyParks organize park features into five activity zones focused on wetland education, winter recreation, adventure recreation, river recreation and nature engagement.
- A concept plan and cost estimate will be developed for each activity zone so IndyParks can begin a strategic implementation of the adventure park's new features.



CLIENT & CONTACT

Julee A. Jacob, Project Manager
 City of Indianapolis, Indy Parks & Recreation
 317.327.4000
 Julee.Jacob@indy.gov



SERVICES

- *Landscape Architecture*
- *Conceptual Design*
- *Natural Resource Assessment*
- *Public Engagement*
- *ALTA/ACSM or Boundary Survey*



LEGEND

Activities

- A1 Picnic Shelter
- A2 Picnic Shelter with Restrooms
- A3 Seating
- A4 Drinking Fountain with Pet Bowl
- A5 Playground
 - Play Structures
 - Nature Play Structures
 - Play Mats
 - Music Play Area
- A6 Split Rail Fence
- A7 Exercise Area

Landscape Features

- L1 Prairie Prairie
- L2 Wetlands (Shrub and Oak Bog)
- L3 Wetland (Emerald Shrubland)
- L4 Built Lawn
- L5 Successional Forest (Shrubland)

Signage & Interpretive

- S1 Park Exit Signage (Interpretive)
- S2 Single Do Not Enter Sign
- S3 Educational Signpost

Trail Network - 1.0 Mile (0.912 MI)

- T1 Multi-Use Path
- T2 Bicycle Parking
- T3 Snow Accumulation Paths
- T4 Boardwalk
- T5 Cracked Stone Path
- T6 800' Split Rail Fence with Seating

Vehicle Circulation

- V1 Vehicle Entry
- V2 Permeable Vehicle Parking



VIRGIL PARK MASTER PLAN

BROWNSBURG, INDIANA

- Virgil Park occupies a 6.67-acre parcel in a rapidly-growing suburb of Hendricks County and currently serves as a wetland mitigation site for the community. As development land, the community has chosen to preserve natural resource functions on this parcel of open space.
- Virgil Park will serve as an important social function for the community by providing a unique park experience that allows users to engage with wetlands and prairie as well as create a destination within the community for users to engage in a “learning landscape.”
- V3 is leading the master plan into design and construction documents through the full design process. Features include a permeable parking lot, internal circulation system leading visitors through prairie and native landscape, educational signage for the different types of landscape, a nature playground and fitness station. The master plan will not only protect existing resources but will also enhance them and provide additional beneficial ecological habitat.
- The master plan was used to successfully acquire an IDNR grant which the Town will match to implement a first phase.
- The design responds to the site's natural topography and utilizes native cultural forms for the layout of the park elements and site circulation. More formal plantings are organized to celebrate the site’s agrarian heritage and educate users about how humans have utilized the land.

 **CLIENT**

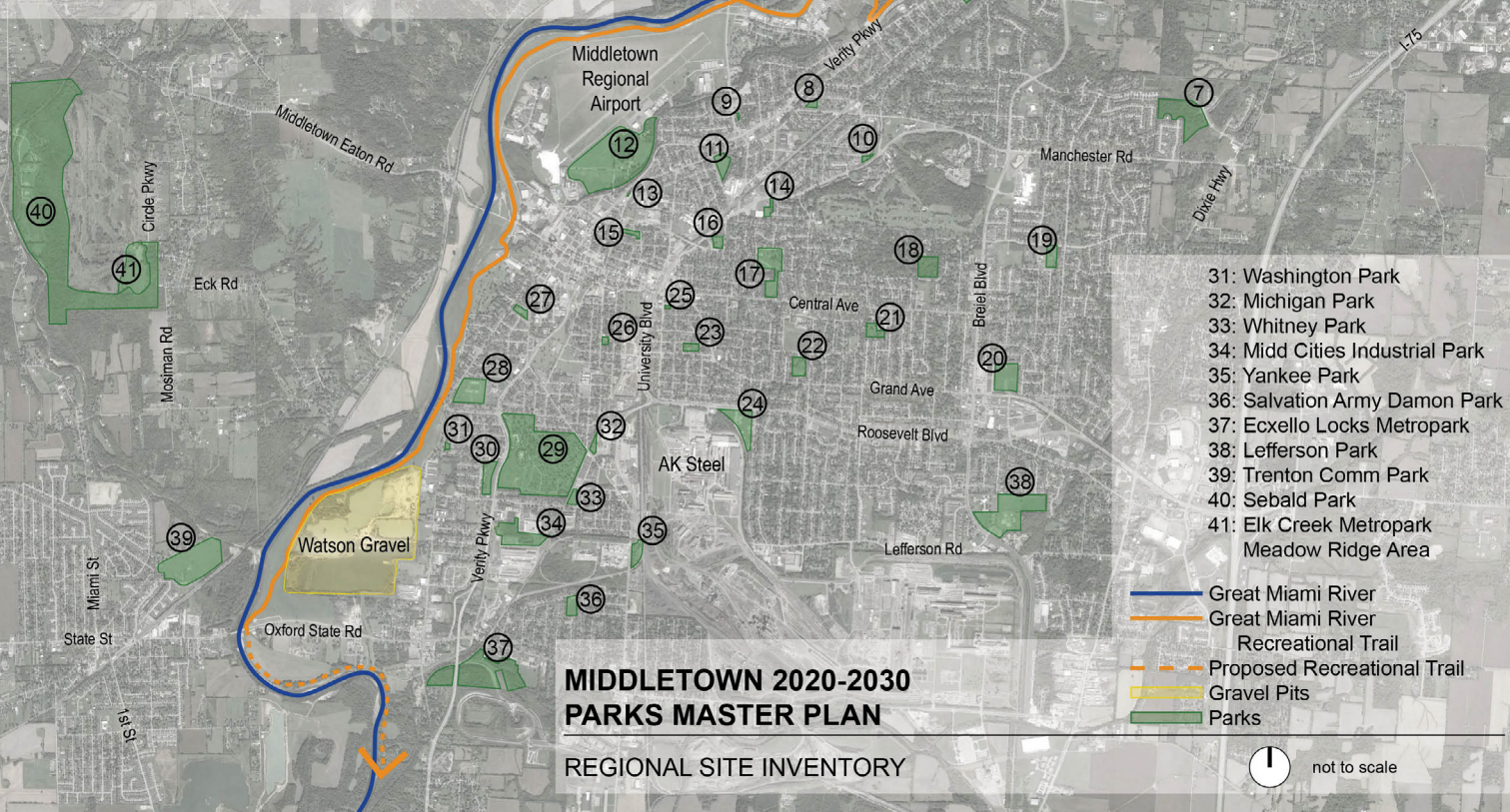
Jonathan Blake
Town of Brownsburg
317.858.4172
jblake@brownsburgparks.com

 **SERVICES**

- *Master Planning*
- *Landscape Architect*
- *Natural Resource*
- *Site Civil Engineering*
- *Construction Estimating*
- *Construction Documents*



- 26: Oakland Park
- 27: Old South Park
- 28: Barnitz Park
- 29: Woodside Cemetery & Arboretum
- 30: Douglass Park



MIDDLETOWN 2020-2030 PARKS MASTER PLAN

MIDDLETOWN, OHIO

- V3 is part of a design team providing planning services for the creation of the City of Middletown's 2020-2030 Parks Master Plan. The team is assisting the Parks Division and Park Board in developing clear and realistic goals, objectives and implementation strategies to best meet the current and future park and recreation needs.
- This master plan will provide guidance for both short and long range planning for the City's park system by integrating community input and recreation planning standards while also accomplishing the City's desire to naturalize a significant amount of their parks to reduce maintenance.
- The City maintains 33 parks including mini-parks, neighborhood parks, community parks and some undeveloped sites. It includes two nature preserves, a Lock Tenders Museum, approximately 270 developed acres as well as 48 undeveloped acres and four miles of paved trails.
- The 10 year vision includes leveraging parks as quality of life improvement, using the park systems for talent attraction to serve in economic development efforts. With its presence along the Great Miami River, the Great Miami River Trail is a recreational asset for the City.

CLIENT

Alison Manning, Natural Resources Coordinator
City of Middletown
513.425.7944
alisonm@cityofmiddletown.org

SERVICES

- Master Planning
- Landscape Architecture
- Public Engagement
- Watermain Design



SECTION 3

QUALIFICATIONS

A HIGHLY SKILLED TEAM OF EXPERTS

The V3 team is well rounded with the technical expertise required to deliver on this complex and catalytic project.



ORLAND PARK

PROJECT MANAGER

Heidi Voirol, P.E., LEED AP® BD+C

LANDSCAPE ARCHITECTURE REVIEW

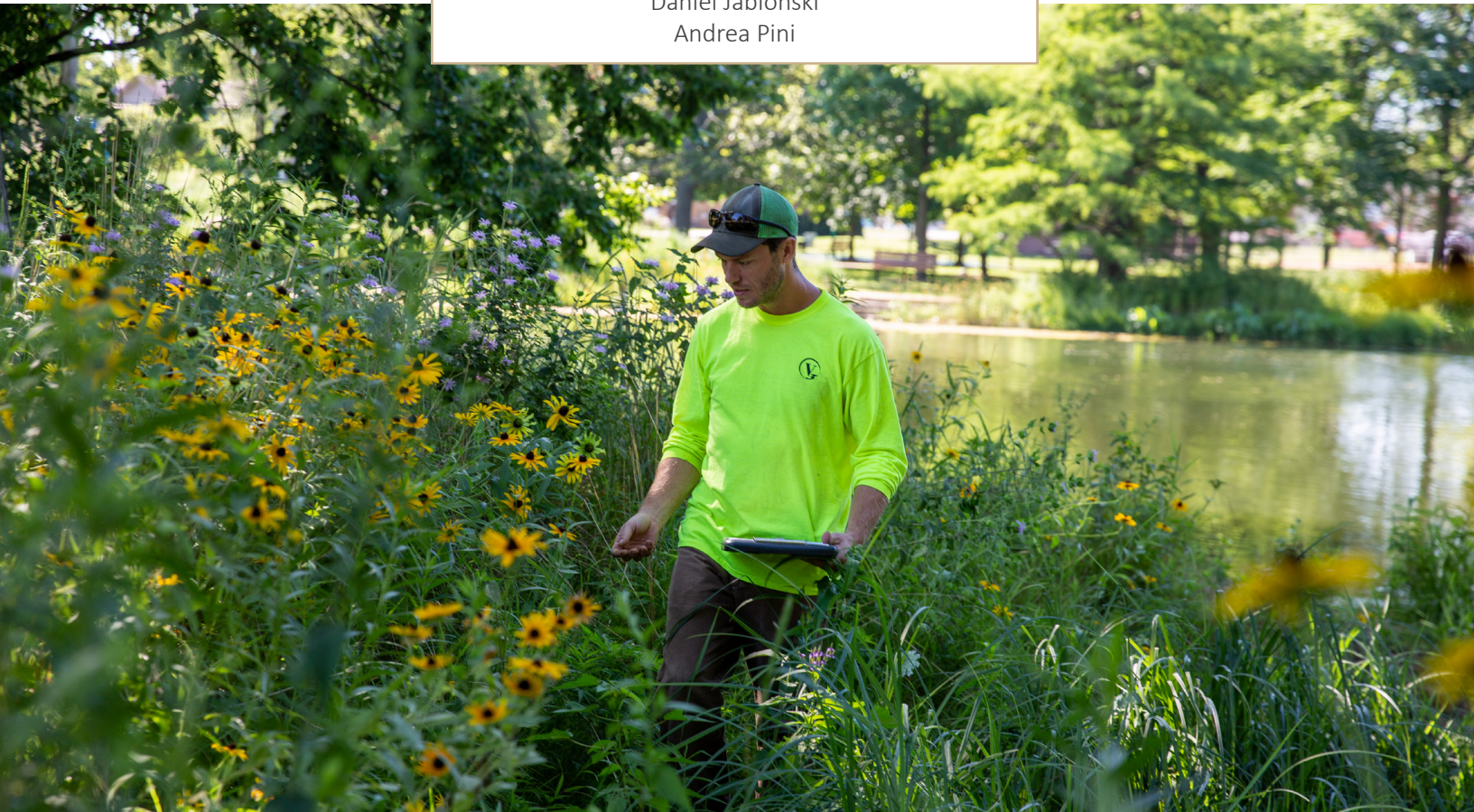
Don Staley, PLA, LEED AP®
Emily Kusz, PLA, LEED AP® BD+C

WETLAND REVIEW

Scott Brejcha, PWS
Alicia Metzger, CPSC, PWS

FIELD INSPECTORS

Keith Jones
Alicia Metzger, CPSC, PWS
Daniel Jablonski
Andrea Pini



V3'S EXPERT LANDSCAPE ARCHITECTURE & WETLAND TEAM

V3's landscape architecture and wetland specialist team brings outstanding expertise in review of consultant-prepared landscape architecture and site engineering construction documents; the interpretation and application of municipal codes; a deep understanding of parks, trails, rights-of-way and other municipal landscape spaces; and natural area botany, hydric soils evaluation, permitting, and mitigation design. V3's team consists the following:



Project Manager, Heidi Voirol, P.E., LEED AP® BD+C – Heidi has 22 years of civil engineering experience with both private and public sector design. Heidi manages multi-discipline project teams through design and permitting strategies, preparation of plans, specifications and estimates while also acting as client contact and liaison. In addition to her design experience, she provides development review services for the Villages of Woodridge, Bartlett, Villa Park and the City of Elgin. She has also managed structural reviews for the City of Chicago Department of Buildings and the Department of Water Management.



Landscape Architecture Review, Don Staley, PLA, LEED AP®. Don is V3's Landscape Architecture Group Leader and will bring his career's worth of experience in municipal, institutional, private, and academic settings to address any landscape architectural need the Village might encounter. During his 11-year tenure as Purdue's Senior Landscape Architect, Don reviewed scores of consultant-provided construction document packages for compliance with University goals, permit agency requirements, and best practices. He now applies that expertise providing QA/QC for construction document packages produced for municipal clients by the V3 team. Don also helped develop the MWRD Greenbooks.



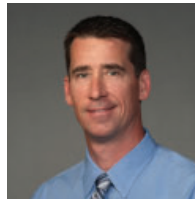
Landscape Architecture Review, Emily Kusz, PLA, LEED AP® BD+C. Emily is a Landscape Architect with an extensive background in site and landscape design. She has civil engineering layout and plan development experience for commercial, institutional and residential projects. Emily has a diverse working knowledge of her field with a focus on low impact site design. Through her wide range experience, educational background and passion for the environment, Emily has cultivated a deep understanding and commitment to sustainable site development. As a municipal code compliance expert, she will guide the team through the due diligence necessary to ensure landscape architecture design work is based on a solid foundation of municipal regulation understanding.



Wetland Review, Scott Brejcha, PWS. Scott is the Manager of V3's Wetland Consulting Group with 21 years of experience in wetland permitting, watershed management plan preparation and coordination, due diligence consultation and the design/build process. He is a Lake County Certified Wetland Specialist, McHenry County Certified Wetland Specialist and Kane County Qualified Wetland Review Specialist. His focus is specifically local county/municipality and USACE permitting as well as local and county wetland permitting reviews.



Wetland Review/Field Inspection, Alicia Metzger, CPSC, PWS. Alicia is a Professional Wetland Scientist (PWS), Lake County Certified Wetland Specialist, McHenry County Certified Wetland Specialist and Kane County Qualified Wetland Review Specialist with 9 years of experience. She is responsible for conducting soil analysis for wetland delineations and wetland mitigation design, collecting GPS data via Garmin or Trimble hand-held units and managing the GIS and wetland delineation databases. She has conducted and created exhibits for more than 100 wetland delineations, tree surveys and vegetation community assessments in ArcGIS and Microstation.



Field Inspection, Keith Jones. Keith is a Project Manager and Senior Ecologist with 22 years of experience. He is responsible for designing, managing and monitoring a variety of ecological projects related to creation, mitigation, enhancement and restoration of varying wetland community types, shorelines, prairies, savannas and the native urban landscapes. Keith's work includes the design and maintenance of natural areas as well as the development of best management practices for Chicago Parks District, Fox Valley Park District, Forest Preserve District of Will County, The Conservation Foundation, Lake County Stormwater Management Commission, Lake County Forest Preserves and USACE. Keith will provide the design of any naturalized landscaping and restoration and develop designs for any naturalized stormwater facilities.



Field Inspection, Daniel Jablonski. Dan is a Certified Arborist with 8 years of hands-on ecological restoration and wetland delineation experience. This has given him a unique perspective towards practical solutions while maintaining the

integrity of the project. Dan has the ability to identify and evaluate the condition of existing trees for incorporation into the overall restoration plans. He has performed all activities related to native area creation and maintenance including chemical and mechanical weed control, native plantings, soil preparations and seeding, select tree clearing and installation of erosion control measures.



Field Inspection, Andrea Pini. Andrea has more than 11 years of experience performing all activities related to native area creation and maintenance including chemical and mechanical weed control, native plantings, soil preparations

and seeding, select tree clearing as well as installation of erosion control measures. Her project experience includes restoration and improvements to streams, wetlands, woodlands and prairies.





Heidi is a Senior Project Manager with experience in managing multi-discipline project teams on transportation infrastructure, municipal improvement and land development projects. Heidi is responsible for design and permitting strategies as well as the preparation of plans, specifications, estimates and project coordination. Project work includes infrastructure, roadway and trail designs, Phase I studies, commercial development and residential development.

YEARS OF EXPERIENCE

V3: 21 | Total: 21

EDUCATION

Bachelor of Science, Civil Engineering,
Marquette University

REGISTRATIONS

Professional Engineer: Illinois,
#062-057225, 2004

Leadership in Energy & Environmental
Design - Building Design &
Construction (LEED AP® BD+C), 2007

ASSOCIATIONS

American Council of Engineering
Companies

Women's Transportation Seminar

American Public Works Association

Orland Grassland South Addition Mitigation Site & Pedestrian Bridge, Illinois Tollway – Orland Park, Illinois

| Project Manager for the site civil engineering and contract document preparation for the wetland mitigation site developed to offset wetland impacts associated with the Jane Addams Tollway (I-90) expansion. Final improvements to the site included creation of more than 65 acres of wetlands, enhancement of existing wetlands and prairie buffer establishment and six acres of stream mitigation. The project also included a new pedestrian bridge, roadway widening, a new parking lot and more than 12,300 feet of trail.

Plan Review Services, Village of Bartlett & City of Elgin – Bartlett & Elgin, Illinois

| Project Manager for engineering review services for a large industrial development located in both communities. Services include reviews for the site civil, stormwater management, wetlands and floodplain which were complicated by the number of agencies having jurisdictional authority. Heidi worked directly with both communities to ensure that the development satisfied the requirements of both municipalities.

Development Review & Inspection Services, Village of Woodridge – Woodridge, Illinois

| Project Manager responsible for the review of site civil, stormwater management systems, survey documents and permit applications on behalf of the Village. Heidi performs site civil reviews of residential, commercial and industrial developments for compliance with the Village, County and state codes.

West Bartlett Road Streetscape Improvements, Village of Bartlett – Bartlett, Illinois

| Project Engineer for the Village of Bartlett's streetscape project improving more than one mile of street from IL Route 59 to Western Avenue. The project consisted of lighting and landscaping enhancements and two new bike nodes along this section of road that serves as the gateway to the Village's downtown area. Heidi was responsible for the design and Illinois Transportation Enhancement Program documentation.



Downtown Oak Park Watermain & Sewer Improvements, Village of Oak Park – Oak Park, Illinois

| Project Manager for the downtown Oak Park water and sewermain improvement project. Improvements include sewer lining and trenchless spot repairs to the existing combined sewer, removal and replacement of sewer and the design of watermain and combined sewer to be augured and encased under a viaduct. Due to the urban location (next to the train station and commuter parking) an emphasis was placed on developing careful construction staging plans to minimize the impact to commuters, pedestrians, residents and businesses.

River Front Trail, City of Kankakee – Kankakee, Illinois

| Project Manager for Phase I and II trail extension of 2,500 feet along the east side of the Kankakee River from an existing pedestrian bridge south to Station Street. Key project challenges include crossing under an existing Norfolk Southern Rail bridge, building a pedestrian bridge over Soldier Creek and crossing under the Court Street (IL Route 17) bridge. Project components included evaluating the existing and proposed hydrology and hydraulics of the Kankakee River and Soldier Creek, structural design and performing a topographic survey and preliminary environmental site assessment. The project is funded in part by an ITEP grant and is being processed through IDOT Local Roads, District 3.

Downtown Joliet Sanitary & Storm Sewer Improvements, City of Joliet – Joliet, Illinois

| Project Manager for infrastructure improvements for a trunk sewer installed in downtown Joliet. Project included disconnection of storm sewer inlets from the combined sewer system and the Cass Street sanitary sewer system extension. The design team had to consider the depth of the existing bedrock and constructability concerns, operations of the Will County Courthouse, work within the IDOT roadways and traffic maintenance in this busy downtown area.

Melvina Ditch Reservoir Expansion, Metropolitan Water Reclamation District of Greater Chicago – Bedford Park, Burbank & Oak Lawn, Illinois

| Project Manager for the site civil engineering for the expansion of the Melvina Reservoir. V3 provided creative engineering solutions to address regional flooding problems, including vertical expansion of the Melvina Ditch Reservoir and by retrofitting the existing pump station. Heidi managed the contract plan and specification documents and assisted the Metropolitan Water Reclamation District at the public meetings.

Department of Water Management Task Order Design Requests, City of Chicago Department of Water Management – Chicago, Illinois

| Project Manager for in-house, term and private contract sewer design. In addition to the sewer design, work included topographic surveys, geotechnical and laboratory testing work, clean construction demolition and debris, Phase I and Phase II services, structural design, utility coordination, IDOT permitting, maintenance of traffic, roadway restoration, ADA ramp designs and the preparation of contract documents. V3 has been awarded ten task order requests (TOR) resulting in 49 separate projects totaling more than 20 miles of sewer design.

- TOR #20 (Five projects/2.43 miles)
- TOR #14-6 (Four projects/1.52 miles)
- TOR #15-3 (Seven projects/2.21 miles)
- TOR #15-13 (Five projects/2.13 miles)
- TOR #16-7 (Eight projects/1.91 miles)
- TOR #17-1 (Two projects/2.22 miles)
- TOR #17-10 (Four projects/1.79 miles)
- TOR #18-3 (Nine projects/3.16 miles)
- TOR #20-2 (Three projects/2.04 miles)
- TOR #20-7 (Two projects/1.46 miles)

Sidewalk Feasibility Study for Forest Hills, Village of Western Springs – Western Springs, Illinois

| Project Manager responsible for the preparation of a sidewalk feasibility study for the Forest Hills area which is approximately 250 acres with seven miles of internal roadway. Each lot with missing sidewalk was evaluated for possible conflicts with trees, landscaping, grading issues, driveways, accessibility concerns, drainage issues and utility conflicts. V3 developed engineer's estimates of probable construction costs needed to complete the sidewalk on each block and prepared the final report which included the estimates of costs and made recommendations for future improvements.



Don is V3's Landscape Architecture Group Leader. He has experience with a wide range of projects including parks, riverfronts, mixed-use developments, campus environments, outdoor education, multi-modal transportation and green infrastructure. Prior to joining V3, Don served as the Senior Landscape Architect for Purdue University. Don is skilled in creatively integrating natural and urban environments to produce functional, manageable and sustainable solutions that fit into the surrounding area and uncover hidden opportunities to create compelling places that inspire people.

YEARS OF EXPERIENCE

V3: 3 | Total: 40

EDUCATION

Bachelor of Science, Landscape Architecture, Purdue University

Master of Landscape Architecture, University of Georgia

REGISTRATIONS

Professional Landscape Architect:

- *Indiana, #L0151, 1983*
- *Illinois, #157.001715, 2019*
- *Ohio, #LA1901499, 2019*
- *Texas, #1840, 1996*

U.S. Green Building Council LEED AP®

MWRD Stormwater Green Guides, Metropolitan Water Reclamation District of Greater Chicago – Cook County, Illinois

| Landscape Architect and Contributing Author for green infrastructure “how to” manuals for homeowners and municipal developers. The homeowner green book provided step-by-step installation guidance for a number of stormwater best management practices. The municipal green book provided implementation guidance for MWRD’s stormwater technical manual, aiming to make best management practices more understandable for developers and municipal engineers. Don co-authored the draft documents and provided project management and oversight.

Purdue Bicycle & Pedestrian Infrastructure Plan – West Lafayette, Indiana

| Senior Landscape Architect for Purdue University responsible for the campus bicycle and pedestrian system master planning effort. This plan provided more complete bicycle connectivity and greater pedestrian safety and also incorporated input from a wide range of existing data including public and stakeholder input sessions. Improvements were recommended in the areas of organization, education, enforcement, encouragement and evaluation.*

Senior Landscape Architect, Purdue University Physical Facilities – West Lafayette, Indiana*

- *Established and maintained campus landscape standards, and guided landscape design and planning during one of Purdue’s largest expansions*
- *Developed site concepts, project budget estimates and evaluated costs*
- *Supported campus planning, sustainability, LEED efforts and a 10-year Capital Plan*
- *Managed landscape project design staff and internship program*
- *Participated in the development of the Purdue Arboretum*
- *Supported student project activity including \$3,000,000 solar system site installation*
- *Managed bicycle system and contributed to master plan*
- *Supported the acquisition and placement of outdoor art*

Sunset Park Green Infrastructure Basin, City of Middletown – Middletown, Ohio

| Lead Landscape Architect for the integration of regional stormwater bioinfiltration into an existing neighborhood park. Park improvements included accessible trails, a playground and shelter area, seating areas, space for a future splash pad and ledgestone planter walls. New park trees were strategically located to maximize shade on the parking lot and native plants were selected to maximize flowering and aesthetic interest year-round.

*Work performed at previous firm



Middletown 2020-2030 Parks Master Plan, City of Middletown – Middletown, Ohio | Landscape and Quality Control Advisor for the development of a park system master plan in a reemerging rust belt community. Project includes completing an inventory of existing conditions and operations and a comparative analysis with peer communities as well as recommendations based on community goals aimed at improving recreation opportunities and quality of life for all residents.

Virgil Park, Town of Brownsburg – Brownsburg, Indiana | Landscape and Quality Control Advisor for a seven-acre park that serves as a wetland mitigation site. Educational signage will create a “learning landscape” while trails lead visitors through prairies and boardwalks provide access to wetland areas. A shelter, nature playground, outdoor fitness area and regional trail connection are also incorporated into the design. V3 is currently in the construction document phase of the project.

Riverside Adventure Park, City of Indianapolis, Indy Parks & Recreation – Indianapolis, Indiana | Landscape and Quality Control Advisor for schematic design efforts to transform 200 acres of Riverside Regional Park from multiple golf courses into an adventure park. Most of the park is in the floodplain of the White River in the heart of Indianapolis. A novel public engagement strategy was developed in response to the COVID-19 outbreak which included activity zones developed around wetland education, winter activities, adventure play, river recreation and nature engagement. Conceptual cost estimates will allow IndyParks to strategically implement park improvements.

Lincoln Yards Green Infrastructure Analysis, Sterling Bay – Chicago, Illinois | Landscape Architect for analyzing green infrastructure opportunities for a mixed-use development along the Chicago River that would complement the landscape design and effectively capture and treat stormwater. Solutions included permeable paving and incorporation of bioswales into greenspace areas as well as conversion of traditional planting beds for bioinfiltration plantings. V3’s stormwater engineers and landscape architects created effective solutions that were sensitive to the design of the site’s outdoor spaces and maximized the effectiveness of green infrastructure interventions on a site with a history of industrial contamination.

Century Park Outdoor Classroom, Romeoville Park District – Romeoville, Illinois | Lead Landscape Architect for concept plan development to revitalize a wetland outdoor education facility. Recommended improvements included shelter replacement, facility and interpretive signage, trail enhancements, lighting, expanded wetland plantings and the addition of prairie and savannah landscape plantings. Cost estimates were developed for budgetary planning purposes.

Cheney Run Recreational Area & Karwick Nature Park, Michigan City Sanitary District – Michigan City, Indiana | Landscape and Quality Control Advisor for this project to develop recreational amenities throughout the V3-designed Cheney Run treatment wetland and the remediated Karwick Road dump site along Trail Creek. Public and stakeholder input established a program for master plan development. Construction documents focused on a first phase of park signage and trails with fishing and boating access to Trail Creek.

ICC Data Center Landscape Guidelines, Itasca Country Club – Itasca, Illinois | Lead Landscape Architect for development of planting and stormwater guidelines for a Gensler-designed data center concept on a former golf course site. Site watersheds were analyzed to determine how to route stormwater to reduce flooding on adjacent property. Topography and potential building footprint elevations were analyzed to determine perimeter screening plantings necessary to mitigate visual impact to adjacent neighborhoods. The guidelines were submitted to the Village in order to lock down basic site development criteria in advance of actual development.

Riverside Marina Placemaking, The Parks Alliance of Indianapolis – Indianapolis, Indiana | Lead Landscape Architect for concept development to activate the White River riverfront adjacent to Riverside Park and the historic 30th Street Bridge. Proposed improvements include a boat drop-off and accessible access to a boat dock, a sun deck utilizing a historic wharf boat dock, an expanded greenspace and terrace including a fire pit and swing seating, a shaded picnic area and access to a fishing sandbar. The concept also recommends narrowing an adjacent parkway to provide trail separation and traffic calming.

Lincoln Yards Temporary Soccer Complex, Sterling Bay – Chicago, Illinois | Lead Landscape Architect for conversion of an existing parking lot into a temporary soccer complex to provide a community recreational opportunity. This project was delivered on a tight timeline so the field could be opened for the season. Don was responsible for site layout and planting plans as well as guiding the development of facility renderings.



Scott is the Manager of V3's Wetland Consulting Group where he manages and plans the activities of a staff of botanists, soil scientists, biologists and ecologists. His additional responsibilities range from marketing and coordinating wetland delineations to permitting, submitting and reviewing federal and county wetland permit applications. He also coordinates and corresponds with state and federal agencies regarding threatened and endangered species surveys. Scott has considerable experience in wetland permitting, watershed management plan preparation and coordination, due diligence consultation, the design/build process and business development within the Midwest.

YEARS OF EXPERIENCE

V3: 14 | Total: 21

EDUCATION

Bachelor of Arts, Environmental Biology, Saint Mary's University in Minnesota

CERTIFICATIONS

Professional Wetland Scientist, PWS
Professional Biologist, Alberta, Canada
Lake County Certified Wetland Specialist: C-106
Kane County Qualified Wetland Review Specialist: W-069
McHenry County Certified Wetland Specialist

ASSOCIATIONS

Society of Wetland Scientists
Association of State Wetland Managers
Alberta Society of Professional Biologists

Wetland Permitting – Illinois & Indiana | Scott has prepared and obtained numerous federal, state and county permits for projects that require impacts to wetland and Waters of the U.S. Scott is V3's Wetland Consulting Group Manager and wetland permitting specialist who manages all of wetland delineations and assessments; provides permitting strategies to obtain permits in a timely manner; prepares, submits and coordinates wetland permit applications submitted to USACE, IEPA, county and local agencies; and prepares and implements wetland and wetland buffer mitigation plans and designs. Following is a representative list of projects Scott has completed wetland permitting for with name of project, county and permitting agency:

- *Stearns & Munger, DuPage County, IL (DuPage County Wetland Certification)*
- *1655 Powis Road, DuPage County, IL (DuPage County Wetland Buffer Permit & Native Restoration Design)*
- *Elim Tinley Creek, Cook County, IL (USACE RP-10)*
- *Big Marsh Bike Park Road Crossings RP, Cook County, IL (USACE)*
- *Big Marsh RP 5 Permit Modification, Cook County, IL (USACE)*
- *River City, Cook County, IL (USACE)*
- *MC, Cook County, IL (MWRD)*
- *USACE Permit Mod, Cook County, IL (USACE)*
- *Mayfair, Cook County, IL (USACE –LONO)*
- *T&C Romeoville, Will County, IL (USACE)*
- *Joliet LONO, Will County, (USACE)*
- *Romeoville Ditch Stabilization, Will County, IL (USACE)*
- *Blains Farm & Fleet, Will County, IL*
- *CN- Rondout, Lake County, IL (RP-3)*
- *Kildeer, Lake County, IL (USACE)*
- *Linden Woods, DuPage County, IL (USACE- IP)*
- *Piedmont, DuPage County, IL (DuPage County)*
- *Manning Woods, DuPage County, IL (DuPage County)*
- *Lake Harriet Fishing Pier, DuPage County, IL (Village of Woodridge)*
- *Crabtree Creek, DuPage County, IL (USACE-RP10)*
- *DuPage Resiliency, DuPage County, IL (USACE/DuPage)*
- *Danada Mitigation, DuPage County, IL (DuPage County)*
- *Celli Leasing Rodenburg, DuPage County, IL (DuPage County)*
- *Gray Willows Mitigation Bank, Kane County, IL (USACE)*
- *Conservancy Road Crossings, Kane County, IL (USACE, RP3)*



Vermilion River Low-Head Dam Removal & Restoration, IDNR Office of Water Resources – Oglesby, Illinois

| Wetland Permitting Specialist for removal of a low-head dam to return this section of river to its natural state and allow for the safe passage and recreational usage of the river at this location. V3 prepared the permits as well as the restoration and mitigation plans for construction access activities. Scott prepared, coordinated and obtained the newly-issued, Nationwide Permit 53 from the USACE Rock Island District.

905 W. Eastman Street, R2 Companies & CRTKL Architects – Chicago, Illinois

| Wetland Permitting Specialist for the renovation of an existing commercial building into a new REI retail space adjacent to Chicago's "Wild Mile" initiative. Proposed improvements included the complete design of West Eastman Street as well as new utility services and design of a new section of riverwalk along the west face of the existing structure which will include pedestrian access and a kayak launch to the Chicago River North Branch Canal. Scott prepared, submitted and obtained USACE Section 10, 404 and 408 permits. The 408 permit process had been recently reintroduced by the Chicago District USACE and as part of this project was reviewed and included a public notice comment period.

Arbor Trails Wetland Permitting & Mitigation Design, K. Hovnanian Homes – Lisle, Illinois

| Wetland Specialist for this 60.5-acre residential project. Project included preserving a 5.6-acre emergent wetland, onsite and offsite wetland mitigation. Scott prepared the USACE regional permit, DuPage County wetland and stormwater permit as well as the onsite wetland mitigation design and best management practices.

Bucky's Winfield, Buchanan Energy

– Winfield, Illinois | Project Manager and Wetland Permitting Specialist for a proposed Bucky's development which directly impacted 0.67 acres of isolated wetlands of DuPage County. Project included a wetland delineation, state and federal threatened and endangered species consultation and a tree survey. Scott prepared, submitted and obtained the DuPage County wetland and stormwater permit certification which included an alternatives analysis. He also coordinated the required wetland mitigation to offset impacts.

2nd Mainline Track Wetlands in DuPage County, Wisconsin Central Ltd. – DuPage County, Illinois

| Project Manager and Wetland Permitting Specialist for this wetland delineation and permitting of proposed impacts to wetlands and Waters of the U.S./ Waters of DuPage County. Project included adding an additional track to this more than two-mile corridor which impacts 0.38 acres of jurisdictional wetlands. Scott prepared, submitted and obtained the USACE regional permit and DuPage County stormwater permit for the project.

CN Railway Wetland Delineation, Canadian National Railway – Gary, Indiana

| Project Manager for analyzing a six-acre site for the presence of wetlands, Waters of the U.S. and threatened and endangered species potential habitat. V3's expert wetland delineation team identified a wetland on the site that met the criteria of a High Quality Aquatic Resource. Project included submitting and coordinating state and federal Threatened and Endangered Species Consultation letters, incorporating tax map and records to outline existing land ownership conditions and wetland permitting consultation.

2nd Mainline Track Wetland in Cook County, Wisconsin Central Ltd. – Cook County, Illinois

| Project Manager and Wetland Permitting Specialist for this wetland delineation and permitting of proposed impacts to wetlands and Waters of the U.S. Project included adding an additional track to this more than four-mile corridor which would impact 1.24 acres of jurisdictional wetlands. Scott prepared and submitted the USACE Individual permit, IEPA 401 Water Quality Certification and Metropolitan Water Reclamation District of Greater Chicago stormwater permit for the project. He also facilitated a public meeting and responded to stakeholder concerns during the USACE required public comment period.

Weber Road & Airport Road Roadway & Intersection Improvements, Blain's Farm & Fleet – Romeoville, Illinois

| Wetland Specialist for this retail development on a 29-acre site. Scott prepared the USACE regional permit and also designed the native best management practices that required a three-year maintenance and monitoring plan.

Lancer Creek Bank Stabilization, Schaumburg Park District – Schaumburg, Illinois

| Project Manager and Wetland Specialist for approximately 106 feet of streambank stabilization on the west bank of Lancer Creek, a Waters of the U.S. Project included wetland delineation, topographic survey, water resource engineering, bank stabilization design and permitting service. Scott prepared USACE and Cook County permits.



Alicia is a Project Scientist responsible for conducting wetland delineations, including farmed wetland determinations, assisting with wetland mitigation design and managing GIS data. She performs all aspects of soil classification including color, texture and structure as well as identification of hydric indicators to assist in defining wetland boundaries. Alicia has also conducted soil analyses for top soil depth, organic carbon content, soil profile classification and water table depth for urban, agricultural and recreational developments. She uses her advanced cartography skills to produce descriptive maps that characterize and classify features in ArcGIS and CAD programs.

YEARS OF EXPERIENCE

V3: 10 | Total: 10

EDUCATION

Bachelor of Science, Geography,
Northern Illinois University

Master of Science, Geography-Soil
Science, Northern Illinois University

CONTINUING EDUCATION

GIS Certificate, Northern Illinois
University

REGISTRATIONS

Certified Professional Soil Classifier

Professional Wetland Scientist

Lake County Certified Wetland
Specialist: #C-154

Kane County Certified Wetland
Specialist: #W-099

McHenry County Certified Wetland
Specialist

ASSOCIATIONS

Illinois Soil Classifiers Association

Association of American Geographers

Association for Women Soil Scientists

Soil Science Society of America

Society of Wetland Scientists

OFFICES HELD

President: Illinois Soil Classifiers
Association

Various Wetland Delineations & Soil Classification – Illinois | Project Scientist for more than 300 wetland delineations utilizing the techniques set forth in the Midwest Regional Supplement to the USACE Wetland Delineation Manual. Delineations include areas of urban, agricultural, forested and recreational development and range in size from less than one acre to more than 300 acres. Alicia is responsible for soil classification and hydric soil indicator identification to assist in defining wetland boundaries and is also responsible for data management using a Garmin or Trimble GPS platform. Representative clients include:

- Illinois Tollway
- McDonalds USA
- DuPage County Stormwater Management
- Forest Preserve District of Cook County
- Forest Preserve District of Will County
- Canadian National Railway
- Village of Woodridge
- Village of Gilberts
- Pulte Homes
- K. Hovnanian Homes
- CVS Pharmacy
- Costco

Orland Grassland South Wetland Mitigation Project, Illinois Tollway – Chicago, Illinois | Scientist for the design of this wetland mitigation site needed to offset wetland impacts associated with the Jane Addams Tollway (I-90) expansion. Project included wetland restoration planning, design and permitting of 160 acres of preserve area and the final design includes more than 65 acres of wetland mitigation credits through re-establishment of historic wetlands, enhancement of existing wetlands and prairie buffer establishment. Alicia designed the mitigation bank, conducted the delineation and managed all GIS data.

Muirhead Springs Wetland & Stream Mitigation Bank, Forest Preserve District of Kane County – Kane County, Illinois | Scientist for design and approval of this project to provide 150 acres of wetland mitigation credits and 6,000 linear feet of stream mitigation with the Muirhead Springs Forest Preserve. The approval process included submittal to a federal inter-agency team which included the USACE, US Fish and Wildlife and USEPA. Mitigation bank documents will be prepared once approval has been obtained.



Gray Willows Wetland Mitigation Bank, Campton Township – *Campton Hills, Illinois* | Scientist for the design, approval and implementation of a wetland mitigation bank on a 200-acre property. A total of 50 mitigation credits will be provided from 32 acres of wetland re-establishment, 18 acres of wetland rehabilitation, and 50 acres of upland buffer which includes savanna restoration and prairie establishment. Alicia collected and analyzed 30 soil samples on the property, assisted with the wetland mitigation design and managed all GIS data for the delineation and proposed restoration and management measures.

Ranger Power Prairie State Solar, Ranger Power – *Swanwick, Illinois* | Project Scientist for an on-site wetland delineation and assessment of 1,700 acres for the proposed Ranger Power Prairie State Solar project area. Thirty areas within the project area were evaluated of which 13 areas were determined to qualify as wetlands or Waters of the United States under USACE jurisdiction based upon hydrologic connections to mapped blue-line streams. Eleven areas were determined to be not under USACE jurisdiction as they were isolated wetlands, grasses waterways and/or ditches which were hydrologically isolated from mapped blue-line streams. The remaining areas were determined to be upland.

2nd Mainline Track Wetlands in DuPage County, Wisconsin Central Ltd. – *DuPage County, Illinois* | Scientist for this wetland delineation and permitting of proposed impacts associated with adding an additional track to this more than two mile corridor. Proposed improvements impacted 0.38 acres of USACE and DuPage County jurisdictional wetlands. Alicia was responsible for wetland delineation design and assisted with permitting submittals.

2nd Mainline Track Wetland in Cook County, Wisconsin Central Ltd. – *Cook County, Illinois* | Scientist for this wetland delineation and permitting of proposed impacts related to adding an additional track to this more than four mile corridor. Project included impacts to 1.24 acres of USACE and Cook County jurisdictional wetlands. Alicia prepared the wetland delineation design and assisted with permitting submittals.

The Conservancy, Ryan Homes – *Gilberts, Illinois* | Scientist for this wetland delineation at a 900-acre residential development adjacent to the Kame-Meagher Forest Preserve. Project included 65 acres of wetland and 53 acres of wetland buffers as well as 30 acres for water quality best management practices. Due to the presence of a population of Blanding's Turtles on the Forest Preserve, V3 prepared and obtained an individual take authorization from the Illinois DNR for both the Blanding's Turtle and the Iowa Darter. Alicia analyzed more than 35 soil samples for hydric soil indicators, top soil depth and depth-to-water table in addition to delineating 10 areas on the property including wetland, farmed wetland and the South Branch Kishwaukee River. She was also responsible for GIS data management and coordination with subcontractors and the Village.

Blackberry Creek Headwaters Wetland Mitigation Bank, Campton Township – *Kane County, Illinois* | Scientist for the design and USACE approval of the 110-acre wetland mitigation bank, which provides 87 acres of wetland mitigation credit in the Fox River Basin. V3 financed, designed, permitted, constructed, installed all native vegetation and conducted the annual ecological management and monitoring under an agreement with Campton Township. Alicia was responsible for maintaining and collecting data as well as managing the GIS database.

Danada Wetland Mitigation Design, DuPage County – *Wheaton, Illinois* | Scientist for design of this wetland mitigation on 64 acres of the 825-acre Danada Forest Preserve. Project included establishment of 15 acres of new wetland and 23 acres of new prairie habitat. Alicia performed the wetland delineation and mitigation design.

Big Marsh Wetland Delineation & Vegetation Mapping, ARAMARK Facility Services – *Chicago, Illinois* | Scientist for the site civil design for this project which involved wetland delineation and vegetation mapping of 300 acres acquired by the Chicago Park District. V3 provided species selection and habitat design for the native restoration with the dual goal of restoring native plant communities and improving ecosystem quality via phytoremediation. Alicia was responsible for the delineation which included collecting more than 30 soil samples to delineate 188 acres of wetland and Waters of the U.S.

Jane Addams Memorial Tollway (I-90) East Design Corridor Manager, Illinois Tollway – *Chicago, Illinois* | GIS Manager and Scientist as part of the V3 Design Corridor Manager team. Alicia was responsible for conducting the wetland delineation and determining top soil depths and analyzed more than 15 soil samples throughout potential wetland restoration areas. She was responsible organizing and maintaining an ArcGIS database for the 282 wetlands and Waters of the U.S. areas which were delineated throughout the project area. She also compiled best management practices designs provided by each design section engineer and creating a 29-page "Overall I-90 Best Management Practices Map" for use by the Illinois Tollway, U.S. Fish and Wildlife Services, IEPA and USACE.



Emily is a Landscape Architect with an extensive background in site and landscape design. She has civil engineering layout and plan development experience for commercial, institutional and residential projects. Emily has a diverse working knowledge of her field with a focus on low impact site design. Through her wide range experience, educational background and passion for the environment, Emily has cultivated a deep understanding and commitment to sustainable site development.

YEARS OF EXPERIENCE

V3: 15 | Total: 17

EDUCATION

Bachelor of Landscape Architecture,
Ball State University

REGISTRATIONS

Registered Landscape Architect:

- *Indiana, #LA20800037, 2008*
- *North Carolina, #1993, 2017*

LEED Accredited Professional Building
Design & Construction

Sunset Park Green Infrastructure Basin, City of Middletown –

Middletown, Ohio | Project Designer for this project to divert water from the Bulls Run Watershed into a basin and then hold, treat and slowly release stormwater back into the combined sewer. Project included design of a new playground, shelter and seating area, space for a future splash pad, paths, planter walls and parking lot crosswalks for pedestrian safety. In addition, new park trees were strategically located to maximize shade on the parking lot and native plants were selected to maximize flowering and aesthetic interest year-round. Emily assisted with the design of aesthetic and functional landscapes within the stormwater management areas, along new walking trails and within the parking lot.

City of Lafayette 3rd & Alabama Street Green Infrastructure Retrofit, City of Lafayette – Lafayette, Indiana

Lafayette, Indiana | Project Designer for implementation of integrated sustainable infrastructure as part of this street reconstruction. The City desired to improve existing drainage problems, pedestrian connectivity, safety and overall aesthetics through the use of green infrastructure. Emily applied green infrastructure best management practices within the project design, worked with the City on appropriate plant selection and coordinated with the project team on construction document compilation.

Durkees Run Stormwater Park, Butler, Fairman & Seufert Engineers

Lafayette, Indiana | Project Designer for a project that retrofitted underutilized tennis courts adjacent to Lafayette Jefferson High School into a park that manages the local watershed, is a destination on the Lafayette trails system and serves as an outdoor classroom for the high school. The local watershed, incorporated into the park, accounts for approximately 10% of the overall Durkees Run interceptor area and removes 2.8 million gallons per year of water from the combined sewer system. Emily worked with the design team aiding in landscape design of park planters and basins, creating educational signage and compiling construction documents.

McAninch Arts Center Landscape Renovation, College of DuPage – Glen Ellyn, Illinois

Glen Ellyn, Illinois | Landscape Architect for revising the existing landscape design to accommodate this building extension and new entrance. The new landscape was designed to coordinate with adjacent campus planting. Emily worked closely with the project team to prepare planting plans, construction documents and specifications for the new planting areas.



North Street Reconstruction & Integrated Stormwater Management, City of Lafayette Department of Public Works – Lafayette, Indiana

| Project Designer for this project which created one of the most sustainable urban streetscapes in the Midwest. Project utilized a unique, complete green street approach which will help revitalize the street corridor, abate significant stormwater volume during storm events and significantly enhance the neighborhood through the use of porous pavers and concrete, rain gardens and significant underground stone storage for infiltration. Emily worked with the City and design team on appropriate landscape design of green infrastructure elements including plant selection, and also coordinated with the project team on construction document compilation.

Indianapolis Green Infrastructure Master Plan, City of Indianapolis, Indiana – Indianapolis, Indiana

| Project Designer for this in-depth plan for green infrastructure best management practices for large scale implementation within the City's 55-square-mile, combined-sewer system. Study looked into potential locations, outcomes and types of best management practices. Emily was responsible for gathering information through a greater area watershed analysis.

City of Lafayette Maple Point Drive & Concord Road, City of Lafayette – Lafayette, Indiana

| Project Designer for integrated sustainable infrastructure as part of this roadway reconstruction and stormwater management project. The City desired to improve existing drainage problems, pedestrian connectivity, safety and overall aesthetics through the use of green infrastructure. Emily applied best management practices within the project design including a sustainable landscape plan with plant layout and then worked with the City on appropriate plant selection.

126th Street Enhanced Stormwater Management, Town of Fishers – Fishers, Indiana

| Project Manager for design services to implement integrated sustainable infrastructure as part of this roadway reconstruction and stormwater management project. The City desired to improve existing drainage problems, pedestrian connectivity, safety and overall aesthetics through the use of green infrastructure. Emily applied best management practices within the project design including a sustainable landscape plan with plant layout and then worked with the City on appropriate plant selection.

Butler University Sunset Avenue Gateway, First Group Engineering – Indianapolis, Indiana

| Project Designer for a complete streets approach to accommodate pedestrians, bicycle and vehicle traffic in the redesign of Sunset Avenue on the eastern boundary of Butler University's campus. In addition to the multimodal transportation elements; the streetscape design also includes linear rain gardens to manage stormwater within the right-of-way and reduce the volume of stormwater discharged to the combined sewer system and nearby White River. Emily provided landscape design for the rain gardens and adjacent parkway plantings as well as assisted in construction document compilation.

69th Street Industrial Build-to-Suit, Becknell Industrial – Hobart, Indiana

| Landscape Architect for site civil engineering of this 50.6-acre site. The project includes a 618,000-square-foot industrial building as well as a future planned expansion of 84,000 square feet. Emily provided an aesthetic, native plant-based, code-compliant landscape plan for the overall development.

Option Care, Quadrangle Development Company – Itasca, Illinois

| Landscape Architect for this proposed one-story, 50,840-square-foot office building on a seven-acre site. Project included a new parking lot, truck delivery bays, site utilities and expansion of an existing stormwater detention pond to serve the site as well as integration of best management practices. Emily worked closely with the Client and Village of Itasca staff to prepare a code compliant landscape plan for the development.

Claiborn Farms Residential Development, Pulte Homes of Indiana, LLC – Westfield, Indiana

| Landscape Architect for this senior living, residential development which included concept design for the overall development as well as final design for specific areas. Landscape architecture services included creating a buffer zone from the existing rural context to this community using native plantings, reforested areas, stormwater management and a trail system. Emily was responsible for preparing technical language for the planned unit development. She also created aesthetic and native landscape design for a butterfly garden as well community garden within the common areas.

The Heritage, M/I Homes – Whitestown, Indiana

| Landscape Architect for this development consisting of 180 duplex units and 160 single family lots on 90 acres near Indianapolis. Project challenges include working around existing high-tension electric lines and a gas pipeline that traverses the property. A regional sanitary improvement that includes trunk lines and a lift station that can accommodate more than 30,000 residents is included in the design. Emily provided an aesthetic, native plant-based, code-compliant landscape plan for the overall development.

KEITH JONES

FIELD INSPECTION / SENIOR ECOLOGIST



Keith is responsible for designing, managing and monitoring ecological projects related to creation, mitigation, enhancement and restoration of varying wetland community types, shorelines, prairies, savannas and native urban landscapes. He directs staff in conducting ecological restoration and management practices involving revegetation efforts, invasive species control and prescribed burning. Keith conducts floristic and wildlife inventories associated with regulatory and non-regulatory ecological projects to evaluate site performance and progress. Keith is the Senior Burn Boss for V3.

YEARS OF EXPERIENCE

V3: 22 | Total: 22

EDUCATION

Bachelor of Science, Environmental Biology, Eastern Illinois University

CONTINUING EDUCATION

Fire Training:

- *S-100 Introduction to Incident Command Systems*
- *S-130/S-190 Basic Wildland Firefighting*
- *S-290 Intermediate Wildland Fire Behavior*
- *S-390 Introduction to Wildland Fire Behavior Calculations*

CPR/First Aid

ODOT Prequalified for Ecological Surveys – Terrestrial

REGISTRATIONS

Prescribed Burn Manager: Illinois, #10-068, 2010

Kane County Qualified Wetland Review Specialist: #W-052

ASSOCIATIONS

Society of Wetland Scientists (SWS)

Lake Michigan Area Coastal Restoration, Aramark Facility Services – Chicago, Illinois

Project Manager for 10 years of projects in the design, restoration, construction and management of key stretches of Lake Michigan coastline in the greater Chicago area. Projects have included creating prairies and wetlands, enhancing dunes and swales and restoring ravine ecosystems. Keith's role has involved habitat creation and management, enhancing the functionality of the shoreline as a migratory flyway and creating bird nesting and roosting locations.

- *Burnham Centennial Prairie Restoration*
- *Humbolt Park*
- *Northerly Island Habitat Restoration*
- *Marovitz Prairie Expansion*
- *South Shore Nature Sanctuary*
- *McCormick Prairie Bird Sanctuary*
- *Jarvis Bird Sanctuary*
- *Rainbow Beach Dune & Swale Restoration*
- *63rd Street Beach Dune & Swale Design*

Lincoln Yards North River Ecology, Sterling Bay – Chicago, Illinois

Senior Ecologist for the master planning, design, and permitting for this 70-acre, mixed-use development on former industrial properties located along the North Branch of the Chicago River. A key component of the master plan was the focus on the river, including rehabilitation of river walls, ecological shoreline restoration of stretches of the river as well as overall health and access to the river. Keith was responsible for the design of river ecology elements.

Fort Sheridan Restoration, Lake County Forest Preserves & USACE – Fort Sheridan, Illinois

Senior Ecologist for the restoration of two major ravines on this 250-acre forest preserve. Repairs included restoring native habitat, construction of a diversion channel, prairie and wetland seedings and processing of approximately 230,000 cubic yards of soil. Keith directed ecological restoration efforts, monitored the developing plant communities during a three-year establishment period and conducted coordination with the USACE through out the process.



Native Landscaping Design/Build Services, Aramark Facility Services & Chicago Parks District – Chicago, Illinois

| Project Manager providing native landscaping and ecological restoration design/build services for numerous sites. Efforts included full design/build activities as well as specific habitat planting, construction efforts, rehabilitation of prairie, wetland and woodland environments and varying conditions that range from lagoons and shorelines to open spaces and wooded areas. Keith managed restoration and stabilization efforts.

Chicago Parks District Prescribed Burns, Aramark Facility Services & Chicago Parks District – Chicago, Illinois

| Project Manager for conducting controlled burns of natural areas within the Park District system. V3 safely conducted controlled burns in 18 parks. Due to the urban nature of the sites, V3 carefully selected optimum wind and weather conditions to minimize smoke impacts on surrounding roads and radiant heat, residences and buildings as well as preventing impacts to trees and hard scape features within many of the parks' natural areas.

Fox Valley Park District Native Management, Fox Valley Park District – Aurora, Illinois

| Project Manager and Senior Ecologist for all restoration activities. Project included the native area management and maintenance of 12 park sites for the Fox Valley Park District with approximately 167 acres of native plant communities, including prairies, woodlands, wetlands and naturalized detention facilities. Keith conducted all site evaluations, formal monitoring and reporting, set program and site priorities, allocated budgetary resources to maximize maintenance and restoration activities as well as managing maintenance efforts.

Indian Creek Floodway Maintenance Evaluation, Fox Valley Park District – Aurora, Illinois

| Project Manager for evaluating ownership of Indian Creek Reservoir, it's surrounding property and current governmental agency maintenance roles. Project included creating a maintenance program, GIS mapping of the property and evaluating the native vegetation conditions at the site.

Van Vlissingen Prairie Industrial Ecological Reuse, Chicago Park District – Chicago, Illinois

| Senior Ecologist working with the Park District to develop habitat restoration and environmental remediation plans for the ecological revitalization of this heavily contaminated site. Challenges include practical habitat and native plant establishment in highly degraded environments, while mitigating the human health and ecotoxicological risks posed by site contaminants, the presence of sensitive species and planned eco-recreational use. Keith led the native plant selection for the habitat restoration and coordinated design features and priorities between the client and various practice area team members during the permitting, remediation and restoration phases.

Romeoville Prairie Nature Preserve South Restoration, Forest Preserve District of Will County – Romeoville, Illinois

| Senior Ecologist for this 17.5-acre site that was divided into an east and west unit. Historically, the site had been used to dump fill, some of which contained non-hazardous special waste. Keith designed the restoration plan and oversaw construction efforts for the east unit, as well assisting with feasibility study for the west unit.

Meacham Creek Park Off-Site Wetland Mitigation, Harlem Irving Companies – Medinah, Illinois

| Project Manager and Senior Ecologist performing wetland mitigation design for this 12-acre site. This project included unique wildlife habitat features as well as five year monitoring and maintenance period. Performed construction oversight during earthwork phase and managed and coordinated monitoring and maintenance efforts.

White Oak West, White Oak West Business Park Owners Association – Aurora, Illinois

| Project Manager, Senior Ecologist and Burn Boss for this 13.5-acre site. The design had a three tier-treat system for filtering stormwater before it exists the site. Keith directed restoration, designed seed and plant mixes, managed staff, led execution of prescribed burns, conducted floristic monitoring and wrote the site report which achieved sign-off within the three-year period.

Prentiss Creek Restoration, Village of Downers Grove – Downers Grove, Illinois

| Senior Ecologist for this bank stabilization and on-line pond restoration. Efforts included dredging, dam removal, construction of a 10-foot gabion wall and installation of more than 11,000 wetland, shoreline and emergent native plants. Keith performed the wetland mitigation design, conducted construction oversight, and coordinated efforts during a three-year management, monitoring and reporting phase.

DANIEL JABLONSKI

FIELD INSPECTION / CERTIFIED ARBORIST



Dan is a Project Manager and Wetland Scientist responsible for performing wetland and ecological restoration activities. His expertise includes native area creation, design, mowing and maintenance including native plantings, soil preparations and seeding, select tree clearing and installation of erosion control measures. Dan conducts wetland delineations and performs all aspects associated with hydrophytic vegetation and hydrology. He also conducts tree surveys, designs native plantings and submits permits to regulatory agencies.

YEARS OF EXPERIENCE

V3: 8 | Total: 11

EDUCATION

Bachelor of Science, Environmental Biology, Eastern Illinois University

Masters of Science, Geography & Environmental Resources, Southern Illinois University Carbondale

CONTINUING EDUCATION

Canadian National Railroad: On Track Safety Training

Commercial Driving License

Fire Training:

- S-130 Firefighter Training
- S-190 Introduction to Fire Behavior
- S-290 Intermediate Wildland Fire Behavior

REGISTRATIONS

Certified Prescribed Burn Manager: Illinois, #17-653, 2017

Certified Arborist: Illinois, #IL-9636A, 2018

USACE Wetland Delineator Certification Program, IWEER, 2017

White Oaks Park Phase 2 Trail & Park Improvements, Wood Dale Park District – Wood Dale, Illinois

Wetland Scientist for improvements to this 20-acre, largely oak forest park with six flatwood wetlands totaling 4.8 acres. Project included wetland delineation, tree survey, topographic survey, wetland permitting, path layout and invasive species removal. The wetlands are extremely unique, qualified as high-quality-critical wetlands, requiring 100 foot buffers. Removal of invasive buckthorn was conducted by V3 and the Wood Dale Park District and involved a one-day community volunteer day.

2nd Mainline Track Wetlands in DuPage County, Wisconsin Central Ltd. – DuPage County, Illinois

Wetland Scientist for this wetland delineation and permitting of proposed impacts associated with adding an additional track to this more than two-mile corridor. Proposed improvements impacted 0.38 acres of USACE and DuPage County jurisdictional wetlands. Dan performed the wetland delineation and assisted with permitting, native design and best management practices implementation.

2nd Mainline Track Wetland in Cook County, Wisconsin Central Ltd. – Cook County, Illinois

Wetland Scientist for this wetland delineation and permitting of proposed impacts related to adding an additional track to this more than four-mile corridor. Project included impacts to 1.24 acres of USACE and Cook County jurisdictional wetlands. Dan performed the wetland delineation and assisted with permitting, native design and best management practices implementation.

Creeks Crossing Park & Drainage Improvements, Village of Algonquin – Algonquin, Illinois

Lead Ecologist for establishment of a new 16-acre park on a previously unimproved riparian corridor. Project included oversight of removals and plantings, creek bank stabilization with new toe anchors, riffles and step pools, new segmented block retaining wall, new pedestrian pathways, seating areas and extensive native seeding.



Ginger Creek Concept Engineering, Oak & Dale Properties – Oak Brook, Illinois | Wetland Scientist for restoring this 16-acre lake which was dug out of the Ginger Creek alignment in the 1950's and has developed sediment, algae and water quality issues. V3 conducted water quality testing, laboratory analysis, sediment assessment and performed a drone survey of the area and conducted a bathymetric survey to assess the total sediment volume within the lake. V3 also performed a wetland delineation of the entire lake system and obtained a jurisdictional permit from the Village of Oakbrook for the presence of wetlands.

Chicago River Dam Removal & Restoration, Industria, Inc. – Chicago, Illinois | Lead Ecologist for removal of the 108-year-old, 82-foot-wide reinforced concrete dam as well as restoration of 450 linear feet of the North Branch River. V3 acted as the demolition/excavation/restoration contractor for this USACE river riparian connectivity and habitat project. Dan conducts all aspects of the native restoration and is overseeing a three-year monitoring program.

Lincoln Greenway Shoreline Restoration, Naperville Park District – Naperville, Illinois | Wetland Scientist for design and permitting of this 2,000-linear-foot shoreline restoration along the West Branch of the DuPage River. Project included bank erosion assessment, survey and wetland delineation as well as restoration design and permitting. Dan performed the wetland delineation and tree survey as well as the native planting design, monitoring and management plan.

Arbor Trails Wetland Mitigation, K. Hovnanian Homes – Lisle, Illinois | Lead Ecologist for this five-acre off-site wetland mitigation area that included wetland creation, savanna restoration and prairie establishment. This project has achieved all performance standards in year four of the monitoring period. Dan oversaw all planting efforts as well as writing monitoring reports.

Illinois Beach State Park Native Area Maintenance, Lake County Forest Preserves – Zion, Illinois | Lead Field Ecologist for this invasive species control project for the 4,160-acre state park. Portions the project area include; State Nature Preserves; high quality pannes, sedge meadows and emergent marshes; and many species of rare plant and animal species. The goal for this project was to reduce the dominance of reed canary grass and phragmites to allow high quality native communities to flourish.

McLean Boulevard Fen, Kane County Department of Environmental Management – South Elgin, Illinois | Field Ecologist for the ecological management of this nine-acre fen. Selective herbicide applications were conducted to reduce reed canary grass and common reed while selective clearing included removing common buckthorn and box elder that were encroaching on seeps. Seed was collected on site and redistributed in cleared areas so no new genotypes were introduced in the fen.

Chicago Parks District Prescribed Burns, Aramark Facility Services & Chicago Parks District – Chicago, Illinois | Field Ecologist conducting controlled burns of natural areas within the Park District system. V3 safely conducted controlled burns in 18 parks. Due to the urban nature of the sites, V3 carefully selected optimum wind and weather conditions to minimize smoke impacts on surrounding roads, residences and buildings as well as preventing impacts to trees and hard scape features within many of the parks' natural areas.

West Branch Forest Preserve Wetland, Fen & River Restoration, DuPage County Department of Stormwater Management – DuPage County, Illinois | Field Ecologist for this complex, multi-year project which involves the restoration of a 350-acre preserve including a one-mile section of the West Branch of the DuPage River, 90 acres of wetlands, a 34-acre fen and adjacent prairies environments. The river restoration posed a daunting challenge requiring a solution that involved diverting the existing river while accommodating the 100-year storm event volumes. Dan assisted in the river restoration and five years of maintenance and monitoring.

Woodside Hole #2 Streambank Stabilization & Fairway Grading, Cantigny Golf Course – Wheaton, Illinois | Field Ecologist for this 2,200-linear-foot streambank stabilization and regrading and shaping of the fairway for Woodside Hole #2. The streambank stabilization included holey boulder retaining walls, coir fiber logs, soil lifts, vegetated stone toe, rock riffles and native plantings and seeding. Dan assisted with all native vegetation installations as well as on-going maintenance tasks to promote establishment.



Andrea is a Project Manager responsible for performing all activities related to native area planning and creation. Her expertise includes annual restoration plan creation and floristic site design, as well as planning of maintenance, design, site monitoring and project management. Andrea directs restoration activities, communicating directly with clients and assisting with the planning, direction and implementation of ecological management activities. Her restoration experience includes restoration and improvements to streams, wetlands, woodlands and prairies

YEARS OF EXPERIENCE

V3: 11 | Total: 11

EDUCATION

Masters of Science, Biology,
Northeastern Illinois University

Bachelor of Science, Biology, Elmhurst
College

CONTINUING EDUCATION

Fire Training:

- *S-100 Introduction to Incident Command Systems*
- *S-130/S-190 Basic Wildland Firefighting*

REGISTRATIONS

Certified Arborist: Illinois, #IL-9635A,
2018

PUBLICATIONS

Fungi Are Capable of
Mycoremediation of River Water
Contaminated by E. coli: February
2020, Water Air Soil Pollution

Cantera Basins Restoration, CBRE, Inc.

– *Warrenville, Illinois* | Project Manager providing full vegetation restoration of five separate detention basin slopes to restore functionality and aesthetics and to meet original design intent as a "gateway" in this commercial entertainment complex. Thick invasive vegetation and onsite beaver populations were causing flooding and an intensive five-year restoration and management plan includes selective clearing, partial slope regrading, native plant and seed installation as well as erosion control blanket and weed control. Andrea prepares annual site management plans, oversees field staff, conducts bi-annual floristic monitoring and submits reports to the City of Warrenville.

Prentiss Creek Management, Village of Downers Grove

– *Downers Grove, Illinois* | Project Manager responsible for maintenance efforts along the creek including weed control and invasive tree clearing. Beavers periodically reenter the site and build dams causing flooding along the northern reach of the project however, long-term bank erosion has been avoided through site monitoring and prompt client notification. Andrea creates annual restoration monitoring plans based on site conditions and floristic observations as well as conducting monitoring and overseeing field staff.

Elmhurst Memorial Hospital Native Management, Elmhurst Memorial Hospital

– *Elmhurst, Illinois* | Project Manager providing ecological restoration for nearly 12 acres of native vegetation areas and basins which were non-compliant with the DuPage County Stormwater permit. V3 is implementing ongoing restoration activities of selective clearing, weed control, native plant and goose-exclusion fencing installation, native seeding and erosion control installation to reach the designated stormwater permit standards. Restoration efforts have been executed, with an unusual DuPage County Stormwater permit sign-off within two years of starting restoration efforts while continued weed control efforts maintain compliance with DuPage County stormwater standards.

Lakewood Creek West, Lakewood Creek West Homeowners Association

– *Montgomery, Illinois* | Project Manager and Project Ecologist for this long term site monitoring and management project. V3 started management in 2006 and has continually improved the species quality and quantity onsite through seeding, weed control and prescribed burn efforts. Andrea develops the yearly restoration plan and oversees field crews during management efforts.



Du-Comm Mitigation, Wight Construction Services, Inc. – Wheaton, Illinois | Project Ecologist for this \$1.2-million, wetland restoration project to provide additional flood storage through construction of basins and a flood control berm located between the campus building and Winfield Creek. Project included a total of 4.4 acres of native wetland, wet prairie and mesic prairie seeding and 11.8 acres woodland native inter-seeding as well as installation of 150 trees and 90 shrubs. Additional improvements included 2,500 linear feet of HMA trail, 1,915 square feet of PCC sidewalk, drainage utilities and fencing near the creek to protect trees and shrub from beavers. Andrea conducts site monitoring, prepares adaptive management plans and designs, oversees field staff and submits to regulatory agencies. When the wet prairie community began to hold a higher of water during spring than originally planned, Andrea adjusted the seed mix, resulting in better native vegetation coverage.

Off-Leash Dog Area Improvements at Oldfield Oaks Forest Preserve, Forest Preserve District of DuPage County – Darien, Illinois | Project Ecologist for restoration activities following V3's construction of a new off-leash dog park. Project included a parking lot, entrance plaza, trails, a drinking fountain and five acres of native plant restoration. During initial construction, Andrea conducted site inspections, informal vegetation monitoring and annual vegetation management plan creation. She conducted quality control and oversaw installation of native seed, plants, trees and shrubs, erosion control blanket and hydromulch installation and weed control conducted by field ecologists. Project achieved three-year performance standards and sign-off from the USACE.

Spring Brook Creek No.1 at St. James Farm Forest Preserve, Forest Preserve District of DuPage County – Warrenville, Illinois | Assistant Project Ecologist and Field Ecologist for this \$3.6-million, two-mile restoration of Spring Brook Creek to its historic floodplain condition. Project included a new meandering creek channel using multiple stabilization methods and restoration with native seeding, wetland plugs and plantings of shrubs and trees. Andrea used GPS to form maintenance and existing condition maps, conducted tree and shrub surveys, communicated with client during selective woodland clearing and oversaw subcontractor clearing work and conduct quality control and helped determine site needs to establish a maintenance plan.

Fox Valley Park District Native Management, Fox Valley Park District – Aurora, Illinois | Assistant Project Ecologist and Field Ecologist for all restoration activities. Project included the native area management and maintenance of 12 park sites for the Fox Valley Park District with approximately 167 acres of native plant communities, including prairies, woodlands, wetlands and naturalized detention facilities. Andrea assisted with yearly budget allocation between different sites. Additionally, Andrea conducted monitoring to determine restoration needs, conducted floristic monitoring, led field crews in restoration and burn efforts and created site maps in GIS as well as specific management maps containing pertinent field observations.

Hadley Valley West Preserve Forest Preserve District of Will County & IDOT – New Lenox, Illinois | Field Ecologist for this 300-acre wetland and upland restoration. All construction and ecological environment creation activities, including a 7,000-foot stream remeander, were conducted by V3's ecological and construction management teams. Andrea assisted in floristic and well monitoring, weed control, and was in direct contact with senior ecology staff regarding site conditions for further invasive species control needs.

Hadley Valley Central Restoration, Forest Preserve District of Will County – New Lenox, Illinois | Field Ecologist for this 180-acre wetland mitigation and restoration project of emergent, sedge meadow, wet prairie, prairie and savanna communities. This project included native prairie and wetland seeding, installation of 180,000 wetland plugs, installation of native trees and shrubs, invasive species management, prescribed burning and ecological monitoring and reporting. Andrea assisted in floristic and well monitoring, weed control, plant and shrub installation, and was in direct contact with senior ecology staff regarding site conditions for further invasive species control needs.

Prentiss Creek Restoration, Village of Downers Grove – Downers Grove, Illinois | Assistant Project Ecologist for this bank stabilization and on-line pond restoration. Efforts included dredging, dam removal, construction of a 10-foot gabion wall and installation of more than 11,000 wetland, shoreline and emergent native plants. Andrea assisted with conducting floristic quality index and site monitoring, site plan implementation, leading field crews in restoration work, assisting in site floristic design and quality control.



SECTION 4

TECHNICAL PROPOSAL

PROJECT UNDERSTANDING & APPROACH

V3 understands that the Village of Orland Park (“Village”) is seeking to contract with a landscape architecture consultant and wetland specialist in order to assist the Village with reviews, inspection, landscape design and planning, and mitigation as well as to perform reviews and inspections in accordance with the Metropolitan Water Reclamation District (MWRD) Watershed Management Ordinance (WMO) and the Village’s landscape code.

V3’s municipal landscape architecture experience, and Landscape Architecture Group Leader Don Staley’s plan review experience as Purdue University’s former Senior Landscape Architect, will provide superior service to the Village. In addition, V3’s extensive experience in wetland delineation,

permitting, design and review services in Chicagoland and the upper Midwest region will bring robust capability to meet your needs. Together, a team of V3 wetland specialists and landscape architects recently created the MWRD Greenbooks for municipal engineers, developers, and homeowners. The Greenbooks translated MWRD stormwater management technical requirements, providing understandable direction intended to simplify compliance.

Specific information, qualifications, experience, and the expert personnel described in this proposal will explain why V3 is the superior choice to meet the Village’s needs for landscape and wetland services.

WETLAND

V3’s team will review and perform wetland field verifications in accordance with the regional supplement to the Corps of Engineers Wetlands Delineation Manual: Midwest Region. As part of this process, we will verify the boundaries of isolated wetlands identified through the USACE jurisdictional determination process as needed at any given site. This process will be completed as a pre-requisite to applicants receiving an official jurisdictional determination from the USACE, which is required under the ordinance. For wetland field verifications under the WMO, V3 will use botanists to evaluate the reported wetland vegetation and soil scientists to evaluate hydric soils data provided.

Once applicants have received an official jurisdictional determination from the USACE and their proposed project will impact a field verified isolated wetland of Cook County, the applicant will submit their Cook County Watershed Management Ordinance (WMO) isolated wetland and riparian permit application to the Village. V3’s wetland permitting experts will review and comment on the application in accordance with the Cook County Watershed Management Ordinance (WMO). The isolated wetland and riparian permit application review process will include:

- *Review of WMP Schedule W and H for compliance and accuracy with the WMO and TGM;*
- *Review of the checklist and documentation required for Sections 305 and 306 of the WMO;*

- *Review of potential proposed direct wetland, riparian, and buffer impacts or avoidance to isolated wetlands;*
- *Review of Maintenance and Monitoring plans for native vegetation including proposed mitigation and BMPs;*
- *Review of information regarding potential indirect impacts (hydrologic impacts) to on-site isolated wetlands or wetlands within 100 feet of the proposed site boundary;*
- *Review and comment on Article 6 of the WMO (when applicable);*
- *All other requirements needed for an isolated wetland permit application, including the IDNR EcoCAT consultation for state threatened & endangered species and the Federal USFWS Section 7 Threatened & Endangered Species process.*

V3 will provide a comment letter to applicants for any isolated wetland and riparian permit applications that are insufficient in documentation per the Ordinance. Applications that meet the requirements of the WMO will be approved. A letter documenting the need for further information, or a letter of approval will be provided to MWRD and the permit applicants.

V3’s wetland field and permit review team are experienced conducting wetland field verifications and isolated wetland permit reviews for other municipalities. Our experience with these processes is thorough and efficient and will assist the Village on the timely issuance of permits for projects involving wetlands and riparian environments.



LANDSCAPE

V3's professional landscape architect team will review and perform landscape field verifications in accordance with the Village of Orland Park Landscape & Tree Preservation Ordinance Section 6-305 (Ordinance). As part of this process, we will verify the planting requirements of each given site development related to parkways, corridors, bufferyards, foundation and interior landscape, parking lots, signage and stormwater management areas.

The detailed requirements for landscape placement, spacing, species, size/width, diversity, caliper and height from the Ordinance will be developed as a checklist of minimum standards that are required for each landscape plan. A preliminary plan review and a final plan review will be evaluated for consistency to the Ordinance.

In addition, V3 will confirm the landscape planting plan schedule and installation timing to confirm best chances of survivability for the new plants. And the general maintenance and preservation of the landscape material will be reviewed for conformance and sustainability of the landscape zones.



SECTION 5

REQUIRED FORMS


PROPOSAL SUMMARY SHEET
RFP #21-055
Landscape Architect Services

Business Name: V3 Companies, Ltd.
Street Address: 7325 Janes Avenue
City, State, Zip: Woodridge, IL 60517
Contact Name: Heidi Voirol, P.E., LEED AP
Title: Project Manager
Phone: 630.729.6177 Fax: _____
E-Mail address: hvoirol@v3co.com

Price Proposal

PROPOSAL TOTAL \$ Billing Rates Provided at 2.80 Multiplier of Actual Wage Rate for V3 Employee

AUTHORIZATION & SIGNATURE

Name of Authorized Signee: Gregory V. Wolterstorff
Signature of Authorized Signee: 
Title: Director of Natural Resources Date: 10/21/21

 **ORLAND PARK**
CERTIFICATE OF COMPLIANCE

The undersigned Gregory V. Wolterstorff, as Director of Natural Resources
(Enter Name of Person Making Certification) *(Enter Title of Person Making Certification)*

and on behalf of V3 Companies, Ltd., certifies that:
(Enter Name of Business Organization)

1) BUSINESS ORGANIZATION:

The Proposer is authorized to do business in Illinois: Yes No

Federal Employer I.D.#: 36-3252440
(or Social Security # if a sole proprietor or individual)

The form of business organization of the Proposer is (*check one*):

- Sole Proprietor
 Independent Contractor (*Individual*)
 Partnership
 LLC
 Corporation Illinois 1984
(State of Incorporation) *(Date of Incorporation)*

2) ELIGIBILITY TO ENTER INTO PUBLIC CONTRACTS: Yes No

The Proposer is eligible to enter into public contracts, and is not barred from contracting with any unit of state or local government as a result of a violation of either Section 33E-3, or 33E-4 of the Illinois Criminal Code, or of any similar offense of "Bid-rigging" or "Bid-rotating" of any state or of the United States.

3) SEXUAL HARASSMENT POLICY: Yes No

Please be advised that Public Act 87-1257, effective July 1, 1993, 775 ILCS 5/2-105 (A) has been amended to provide that every party to a public contract must have a written sexual harassment policy in place in full compliance with 775 ILCS 5/2-105 (A) (4) and includes, at a minimum, the following information: (I) the illegality of sexual harassment; (II) the definition of sexual harassment under State law; (III) a description of sexual harassment, utilizing examples; (IV) the vendor's internal complaint process including penalties; (V) the legal recourse, investigative and complaint process available through the Department of Human Rights (the "Department") and the Human Rights Commission (the "Commission"); (VI) directions on how to contact the Department and Commission; and (VII) protection against retaliation as provided by Section 6-101 of the Act. (Illinois Human Rights Act). (emphasis added). Pursuant to 775 ILCS 5/1-103 (M) (2002), a "public contract" includes "...every contract to which the State, any of its political subdivisions or any municipal corporation is a party."

4) EQUAL EMPLOYMENT OPPORTUNITY COMPLIANCE: Yes [] No []

During the performance of this Project, Proposer agrees to comply with the "Illinois Human Rights Act", 775 ILCS Title 5 and the Rules and Regulations of the Illinois Department of Human Rights published at 44 Illinois Administrative Code Section 750, et seq. The

Proposer shall: (I) not discriminate against any employee or applicant for employment because of race, color, religion, sex, marital status, national origin or ancestry, age, or physical or mental handicap unrelated to ability, or an unfavorable discharge from military service; (II) examine all job classifications to determine if minority persons or women are underutilized and will take appropriate affirmative action to rectify any such underutilization; (III) ensure all solicitations or advertisements for employees placed by it or on its behalf, it will state that all applicants will be afforded equal opportunity without discrimination because of race, color, religion, sex, marital status, national origin or ancestry, age, or physical or mental handicap unrelated to ability, or an unfavorable discharge from military service; (IV) send to each labor organization or representative of workers with which it has or is bound by a collective bargaining or other agreement or understanding, a notice advising such labor organization or representative of the Vendor's obligations under the Illinois Human Rights Act and Department's Rules and Regulations for Public Contract; (V) submit reports as required by the Department's Rules and Regulations for Public Contracts, furnish all relevant information as may from time to time be requested by the Department or the contracting agency, and in all respects comply with the Illinois Human Rights Act and Department's Rules and Regulations for Public Contracts; (VI) permit access to all relevant books, records, accounts and work sites by personnel of the contracting agency and Department for purposes of investigation to ascertain compliance with the Illinois Human Rights Act and Department's Rules and Regulations for Public Contracts; and (VII) include verbatim or by reference the provisions of this Equal Employment Opportunity Clause in every subcontract it awards under which any portion of this Agreement obligations are undertaken or assumed, so that such provisions will be binding upon such subcontractor. In the same manner as the other provisions of this Agreement, the Proposer will be liable for compliance with applicable provisions of this clause by such subcontractors; and further it will promptly notify the contracting agency and the Department in the event any subcontractor fails or refuses to comply therewith. In addition, the Proposer will not utilize any subcontractor declared by the Illinois Human Rights Department to be ineligible for contracts or subcontracts with the State of Illinois or any of its political subdivisions or municipal corporations. Subcontract" means any agreement, arrangement or understanding, written or otherwise, between the Proposer and any person under which any portion of the Proposer's obligations under one or more public contracts is performed, undertaken or assumed; the term "subcontract", however, shall not include any agreement, arrangement or understanding in which the parties stand in the relationship of an employer and an employee, or between a Proposer or other organization and its customers. In the event of the Proposer's noncompliance with any provision of this Equal Employment Opportunity Clause, the Illinois Human Right Act, or the Rules and Regulations for Public Contracts of the Department of Human Rights the Proposer may be declared non-responsible and therefore ineligible for future contracts or subcontracts with the State of Illinois or any of its political subdivisions or municipal corporations, and this agreement may be canceled or avoided in whole or in part, and such other sanctions or penalties may be imposed or remedies involved as provided by statute or regulation.

5) TAX CERTIFICATION: Yes [x] No []

Contractor is current in the payment of any tax administered by the Illinois Department of Revenue, or if it is: (a) it is contesting its liability for the tax or the amount of tax in accordance with procedures established by the appropriate Revenue Act; or (b) it has entered into an agreement with the Department of Revenue for payment of all taxes due and is currently in compliance with that agreement.

6) AUTHORIZATION & SIGNATURE:

I certify that I am authorized to execute this Certificate of Compliance on behalf of the Contractor set forth on the Proposal, that I have personal knowledge of all the information set forth herein and that all statements, representations, that the Proposal is genuine and not collusive, and information provided in or with this Certificate are true and accurate. The undersigned, having become familiar with the Project specified, proposes to provide and furnish all of the labor, materials, necessary tools, expendable equipment and all utility and transportation services necessary to perform and complete in a workmanlike manner all of the work required for the Project.

ACKNOWLEDGED AND AGREED TO:



Signature of Authorized Officer

Gregory V. Wolterstorff
Name of Authorized Officer

Director of Natural Resources
Title

10/21/21
Date

REFERENCES

Provide three (3) references for which your organization has performed similar work.

Bidder's Name: V3 Companies, Ltd.

(Enter Name of Business Organization)

- | | |
|-----------------|--|
| 1. ORGANIZATION | <u>Village of Woodridge</u> |
| ADDRESS | <u>One Plaza Drive, Woodridge, Illinois 60517</u> |
| PHONE NUMBER | <u>630.719.4753</u> |
| CONTACT PERSON | <u>Robert (Bob) Myers, Civil Engineer</u> |
| YEAR OF PROJECT | <u>2018</u> |
| 2. ORGANIZATION | <u>Village of Villa Park</u> |
| ADDRESS | <u>20 S. Ardmore Avenue, Villa Park, Illinois 60181-2696</u> |
| PHONE NUMBER | <u>630.834.8505</u> |
| CONTACT PERSON | <u>Richard Salerno, Director of Public Works</u> |
| YEAR OF PROJECT | <u>2021</u> |
| 3. ORGANIZATION | <u>City of Middletown</u> |
| ADDRESS | <u>1 Donham Plaza, Middletown, Ohio 45042-1932</u> |
| PHONE NUMBER | <u>513.425.7989</u> |
| CONTACT PERSON | <u>Scott Tadych, Public Works Director</u> |
| YEAR OF PROJECT | <u>2018</u> |



INSURANCE REQUIREMENTS

Please submit a policy Specimen Certificate of Insurance showing current coverage's

WORKERS' COMPENSATION & EMPLOYER LIABILITY

Full Statutory Limits - Employers Liability
\$500,000 – Each Accident \$500,000 – Each Employee
\$500,000 – Policy Limit
Waiver of Subrogation in favor of the Village of Orland Park

AUTOMOBILE LIABILITY (ISO Form CA 0001)

\$1,000,000 – Combined Single Limit Per Occurrence
Bodily Injury & Property Damage

GENERAL LIABILITY (Occurrence basis) (ISO Form CG 0001)

\$1,000,000 – Combined Single Limit Per Occurrence
Bodily Injury & Property Damage
\$2,000,000 – General Aggregate Limit
\$1,000,000 – Personal & Advertising Injury
\$2,000,000 – Products/Completed Operations Aggregate
Additional Insured Endorsements: ISO CG 20 10 or CG 20 26 and
CG 20 01 Primary & Non-Contributory
Waiver of Subrogation in favor of the Village of Orland Park

PROFESSIONAL LIABILITY

\$1,000,000 Limit - Claims Made Form, Indicate Retroactive Date
Deductible not-to-exceed \$50,000 without prior written approval

UMBRELLA LIABILITY (Follow Form Policy)

\$2,000,000 – Each Occurrence \$2,000,000 – Aggregate
EXCESS MUST COVER: General Liability, Automobile Liability, Employers' Liability

UMBRELLA/EXCESS PROFESSIONAL LIABILITY

\$1,000,000 Limit – Claims Made Form, Indicate Retroactive Date
Deductible not-to-exceed \$50,000 without prior written approval

BUILDERS RISK

Completed Property Full Replacement Cost Limits -
Structures under construction

ENVIRONMENTAL IMPAIRMENT/POLLUTION LIABILITY

\$1,000,000 Limit for bodily injury, property damage and remediation costs
resulting from a pollution incident at, on or mitigating beyond the job site

CYBER LIABILITY

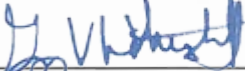
\$1,000,000 Limit per Data Breach for liability, notification, response,
credit monitoring service costs, and software/property damage

Any insurance policies providing the coverages required of the Consultant, excluding Professional Liability, shall be specifically endorsed to identify **"The Village of Orland Park, and their respective officers, trustees, directors, officials, employees, volunteers and agents as Additional Insureds on a primary/non-contributory basis with respect to all claims arising out of operations by or on behalf of the named insured."** The required Additional Insured coverage shall be provided on the Insurance Service Office (ISO) CG 20 10 or CG 20 26 endorsements or an endorsement at least as broad as the above noted endorsements as determined by the

Village of Orland Park. Any Village of Orland Park insurance coverage shall be deemed to be on an excess or contingent basis as confirmed by the required (ISO) CG 20 01 Additional Insured Primary & Non-Contributory Endorsement. The policies shall also contain a Waiver of Subrogation in favor of the Additional Insureds in regard to General Liability and Workers' Compensation coverage. The certificate of insurance shall also state this information on its face. Any insurance company providing coverage must hold an A-, VII rating according to Best's Key Rating Guide. Each insurance policy required shall have the Village of Orland Park expressly endorsed onto the policy as a Cancellation Notice Recipient. Should any of the policies be cancelled before the expiration date thereof, notice will be delivered in accordance with the policy provisions. Permitting the contractor, or any subcontractor, to proceed with any work prior to our receipt of the foregoing certificate and endorsements shall not be a waiver of the contractor's obligation to provide all the above insurance.

Consultant agrees that prior to any commencement of work to furnish evidence of Insurance coverage providing for at minimum the coverages, endorsements and limits described above directly to the Village of Orland Park, Nicole Merced, Purchasing Coordinator, 14700 S. Ravinia Avenue, Orland Park, IL 60462. Failure to provide this evidence in the time frame specified and prior to beginning of work may result in the termination of the Village's relationship with the contractor.

ACCEPTED & AGREED ON 10/21/2021



Signature

Gregory V. Wolterstorff

Printed Name

Director of Natural Resources

Title

Authorized to execute agreements for:

V3 Companies, Ltd.

Name of Company

Note: Sample Certificate of Insurance and Additional Insured Endorsements attached.



VISIO, VERTERE, VIRTUTE | THE VISION TO TRANSFORM WITH EXCELLENCE



ORLAND PARK
LANDSCAPE ARCHITECT
SERVICES *PRICING*

RFP #21-055



SUBMITTED BY
V3 COMPANIES





SECTION 6

HOURLY RATES



HOURLY RATES



| Team Members/Role | Hourly Wage | Billing Rate* |
|--------------------------------------|-------------|---------------|
| Project Manager | | |
| Heidi Voirol, P.E., LEED AP® BD+C | \$66.04 | \$184.91 |
| Landscape Architecture Review | | |
| Don Staley, PLA, LEED AP® | \$57.54 | \$161.11 |
| Emily Kusz, PLA, LEED AP® BD+C | \$30.26 | \$84.73 |
| Wetland Review | | |
| Scott Brejcha, PWS | \$63.72 | \$178.42 |
| Alicia Metzger, CPSC, PWS | \$37.07 | \$103.80 |
| Field Inspection | | |
| Keith Jones | \$47.19 | \$132.13 |
| Alicia Metzger, CPSC, PWS | \$37.07 | \$103.80 |
| Daniel Jablonski | \$30.80 | \$86.24 |
| Andrea Pini | \$30.13 | \$84.36 |
| Field Ecologist II | \$20.00 | \$56.00 |
| Field Ecologist III | \$25.00 | \$70.00 |

**Billing Rate is 2.80 multiplier of actual hourly wage for V3 employee.*



VISIO, VERTERE, VIRTUTE | THE VISION TO TRANSFORM WITH EXCELLENCE