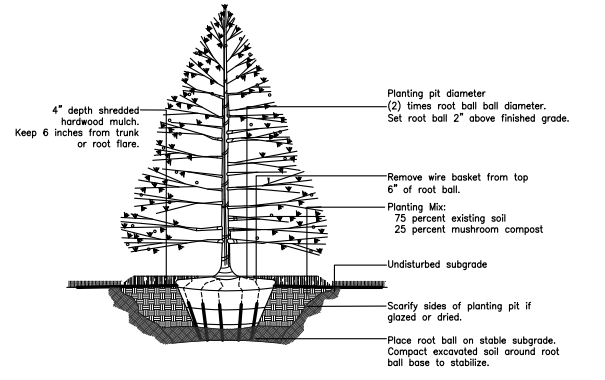
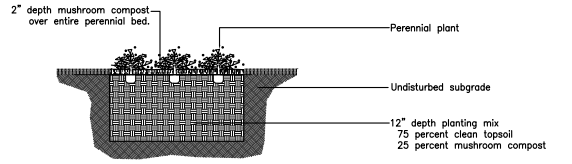


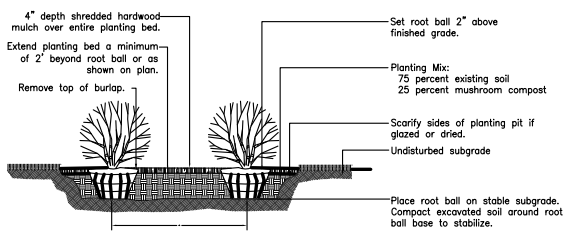
Detail
Deciduous Tree Planting



Detail
Evergreen Tree Planting



Detail
Perennial Planting



Detail
Shrub Planting

BOARD APPROVED
Case No: **2013-0333**
Date: **June 3, 2013**
W/Conditions: **X**
W/Out Conditions: **X**
VILLAGE OF ORLAND PARK

14325 S. LaGrange Road
Parking Lot Improvements
Orland Park, Illinois

Plant List

KEY	QTY.	SIZE	BOTANICAL NAME	COMMON NAME	REMARKS
AMC	4	6"	Amelanchier canadensis	Shadblow Serviceberry	BB - Clump
CEO	2	2.5"	Celtis occidentalis 'Prairie Pride'	Prairie Pride Common Hackberry	BB
CMK	6	#1	Calamagrostis acutiflora 'Karl Foerster'	Feather Reed Grass	Container
FVB	11	24"	Forsythia viridissima 'Bronxensis'	Bronx Dwarf Forsythia	BB
GTS	6	2.5"	Gleditsia triacanthos var. inermis 'Skyline'	Skyline Thornless Honeylocust	BB
JCS	22	24"	Juniperus chinensis var. sargentii	Sargent Juniper	BB
PGD	1	8"	Picea glauca 'Densata'	Black Hill's Spruce	BB
PIC	3	8"	Picea pungens	Colorado Green Spruce	BB
RHG	11	24"	Rhus aromatica 'Gro-Low'	Gro-Low Fragrant Sumac	BB
SMK	18	24"	Syringa patula 'Miss Kim'	Miss Kim Dwarf Lilac	BB
TOT	4	6"	Thuja occidentalis 'Technyil'	Mission Arborvitae	BB
ULM	3	2.5"	Ulmus 'Regal'	Regal Elm	BB
ULM	1	4"	Ulmus 'Regal'	Regal Elm	BB

DAVID R. McCALLUM ASSOCIATES, INC.
LANDSCAPE ARCHITECTS
350 N. Milwaukee Avenue | Libertyville, Illinois 60048
T 847.923.0209 | F 847.923.0294



Landscape Notes

Size and grading standards of plant materials shall conform to the latest edition of ANSI Z60.1, AMERICAN STANDARD FOR NURSERY STOCK, by the American Nursery & Landscape Association.
All plant materials shall be nursery grown stock and shall be free of any deformities, diseases or insect damage. Any materials with damaged or crooked/disfigured leaders, bark abrasions, sunscald, insect damage, etc. are not acceptable and will be rejected.
Trees not exhibiting a central (or single) leader will be rejected unless called out in the Plant Schedule as multi-stem.
Inspection and approval of all plant materials by the Landscape Architect is required prior to installation. Any materials installed without approval may be rejected.
The Village may reject any plant materials that are diseased, deformed, or otherwise not exhibiting superior quality requirements, including those described in the Plant Schedule.
The Contractor is responsible for providing and installing all materials shown on the Plan in accordance with plan design and materials quantities.
The Contractor is responsible for protecting underground utilities, sidewalks and other previously constructed site improvements.

Landscape Calculations

North Bufferyard - 76.86' (86.86' - 10' east bufferyard overlap)

	Required	Proposed
Canopy trees (*Evergreen)	3 (1)	3 (2 canopy + 1 evergreen)
Understory trees	1	1
Shrubs (*Evergreen)	12 (4)	15 (3 deciduous + 12 evergreen)
* 30% of which should be evergreen		

East Bufferyard - 168.67'

	Required	Proposed
Canopy trees (*Evergreen)	6 (2)	6 (4 canopy + 2 evergreen)
Understory trees	2	2
Shrubs (*Evergreen)	27 (8)	28 (18 deciduous + 10 evergreen)
* 30% of which should be evergreen		

South Bufferyard - 71' (81' - 10' east bufferyard overlap)

	Required	Proposed
Canopy trees (*Evergreen)	3 (1)	7 (6 existing + 1 evergreen)
Understory trees	1	2 (1 existing + 1 new)
Shrubs (*Evergreen)	12 (4)	12 (8 deciduous + 4 evergreen)
* 30% of which should be evergreen		

West Bufferyard - Not Applicable

Interior Lot - 15,026 square feet

Trees	Required	Proposed
Trees	2	2

Foundation Landscaping - Not Applicable

Parking Lot/Landscape Islands - 31 spaces

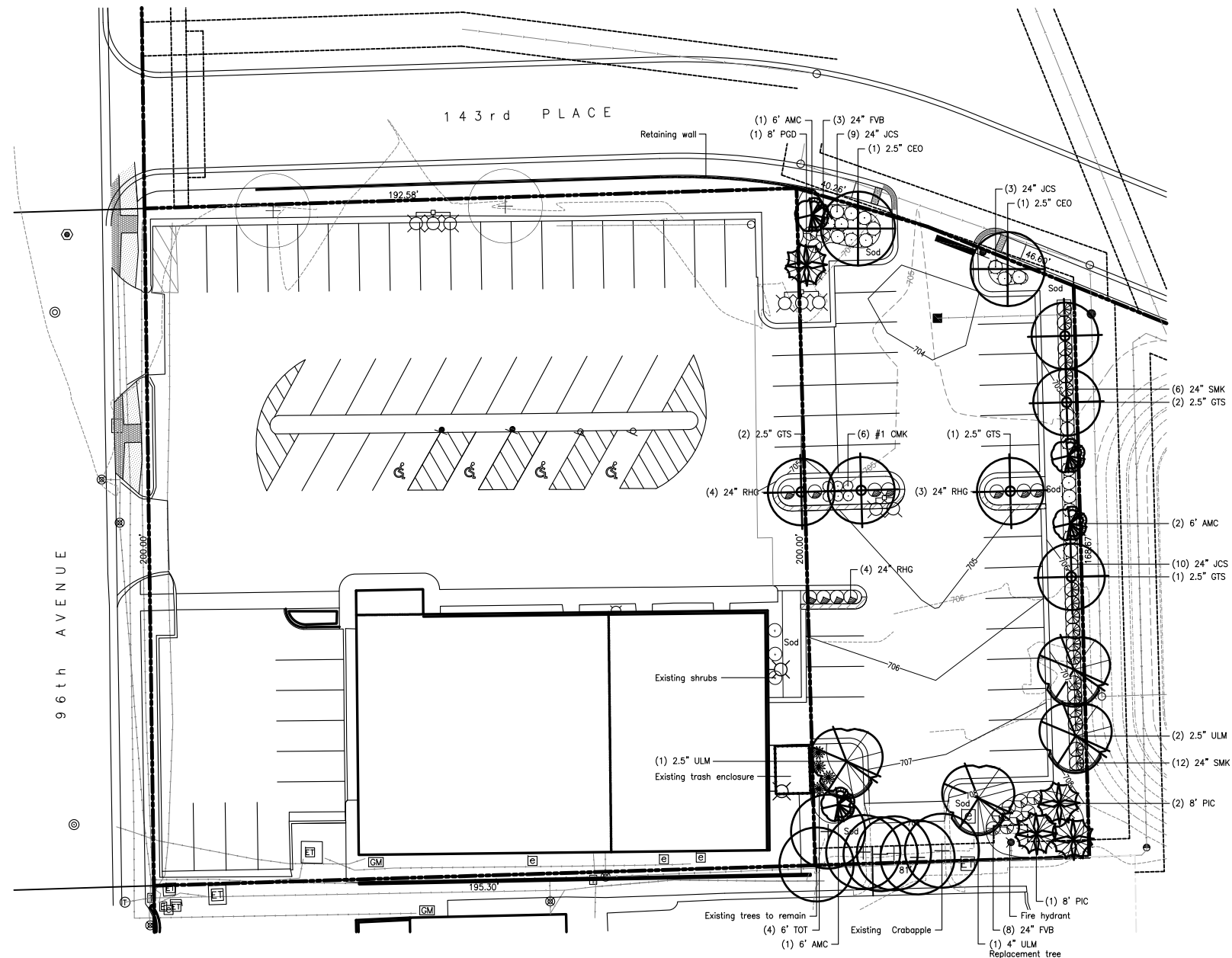
	Required	Proposed
Canopy trees	3	3
Shrubs	3	11

Parkway Trees - 86.86'

	Required	Proposed
Parkway trees	2	Not applicable/Sidewalk

Tree Preservation - Tree Replacement

Tag No.	Diameter of Removed Tree	Required	Proposed
1	12"	(1) 4"	1



KIN PROPERTIES
185 NW Spanish River Blvd | Boca Raton, Florida 33481
T 561.923.9200 | F 561.986.4425

Landscape Plan

2	For Review	012213
1	For Review	121212
Mark	Description	Date
Issuance		
Number	406812	
Scale	1" = 20'	
File	4068FP2A	
Sheet	L10	



14325 S. LaGrange Road
 Parking Lot Improvements
 Orland Park, Illinois

DAVID R. McCALLUM ASSOCIATES, INC.
 LANDSCAPE ARCHITECTS
 350 N. Milwaukee Avenue | Libertyville, Illinois 60048
 T 847.362.0209 | F 847.362.0294



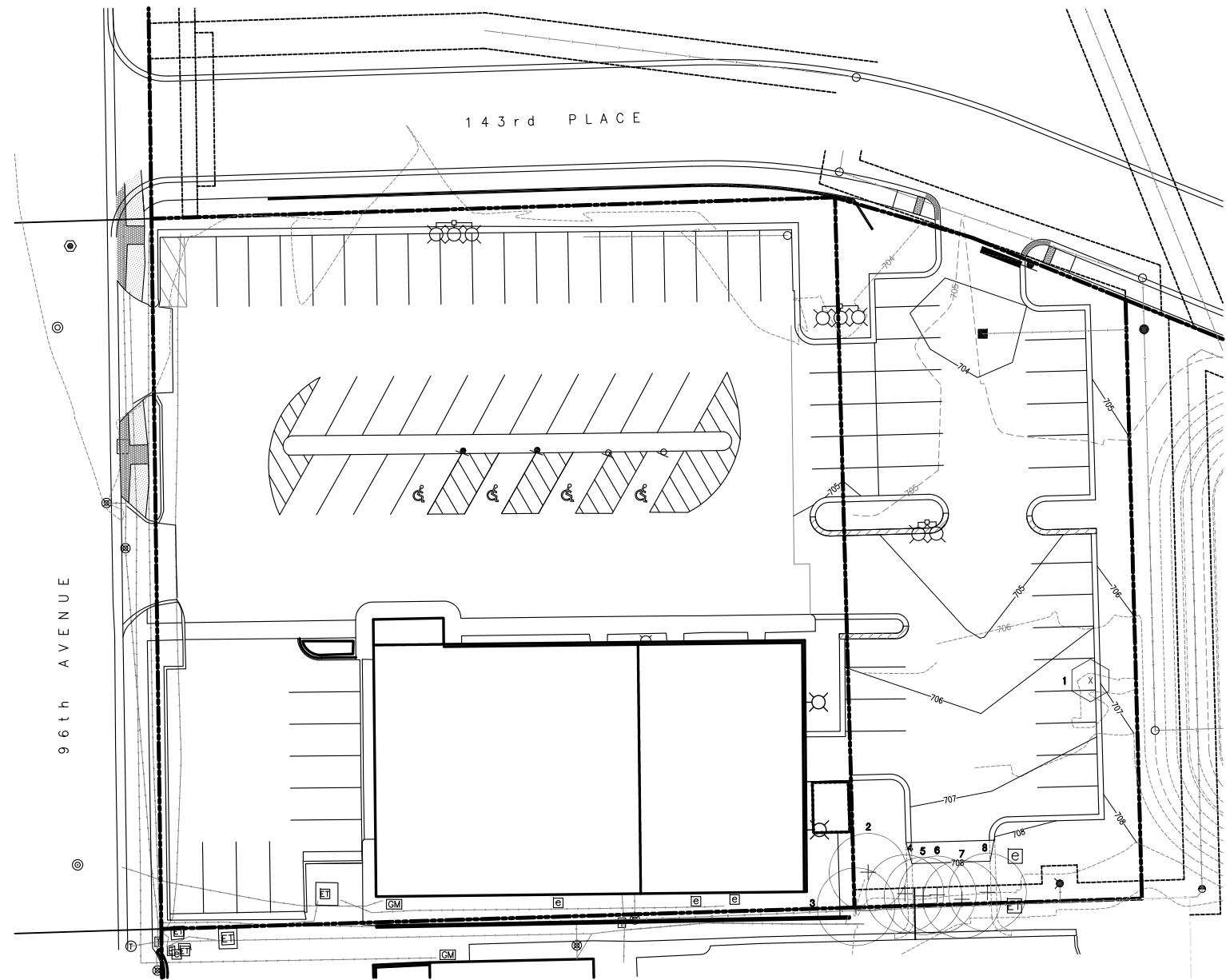
KIN PROPERTIES
 185 NW Spanish River Blvd. | Boca Raton, Florida 33431
 T 561.620.9200 | F 561.986.4425

Existing Tree Inventory

TAG	SIZE	BOTANICAL NAME	COMMON NAME	FORM/CONDITION	ACTION
1	12"	Pinus nigra	Austrian Pine	2/2	Remove
2	8" + 12"	Ulmus parvifolia	Chinese Elm	3/4	To remain
3	8"	Acer negundo	Boxelder	3/3	To remain
4	11"	Ulmus parvifolia	Chinese Elm	3/4	To remain
5	3"	Ulmus parvifolia	Chinese Elm	3/4	To remain
6	8"	Ulmus parvifolia	Chinese Elm	4/4	To remain
7	4"	Ulmus parvifolia	Chinese Elm	4/4	To remain
8	4" + 9"	Malus species	Crabapple	3/3	To remain

Condition Rating Scale

RATING	DESCRIPTION	GENERAL CRITERIA
1	Excellent	The tree has no apparent defects. This category is typically reserved for larger mature trees in excellent condition.
2	Very Good	Contains little or no deadwood, has few defects and appears healthy.
3	Average	The tree may contain some deadwood or other manageable defects.
4	Poor	The tree possesses numerous major defects. Maintenance and monitoring of the tree is needed.
5	Very Poor	75 percent or more of the tree is dead. Most trees in this condition should be removed.

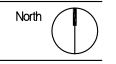


Tree Inventory Plan

2	For Review	01.22.13
1	For Review	12.18.12
Mark	Description	Date
Issuance		

Number
406812

Scale
1" = 20'



File
4068FP2A

Sheet
L20