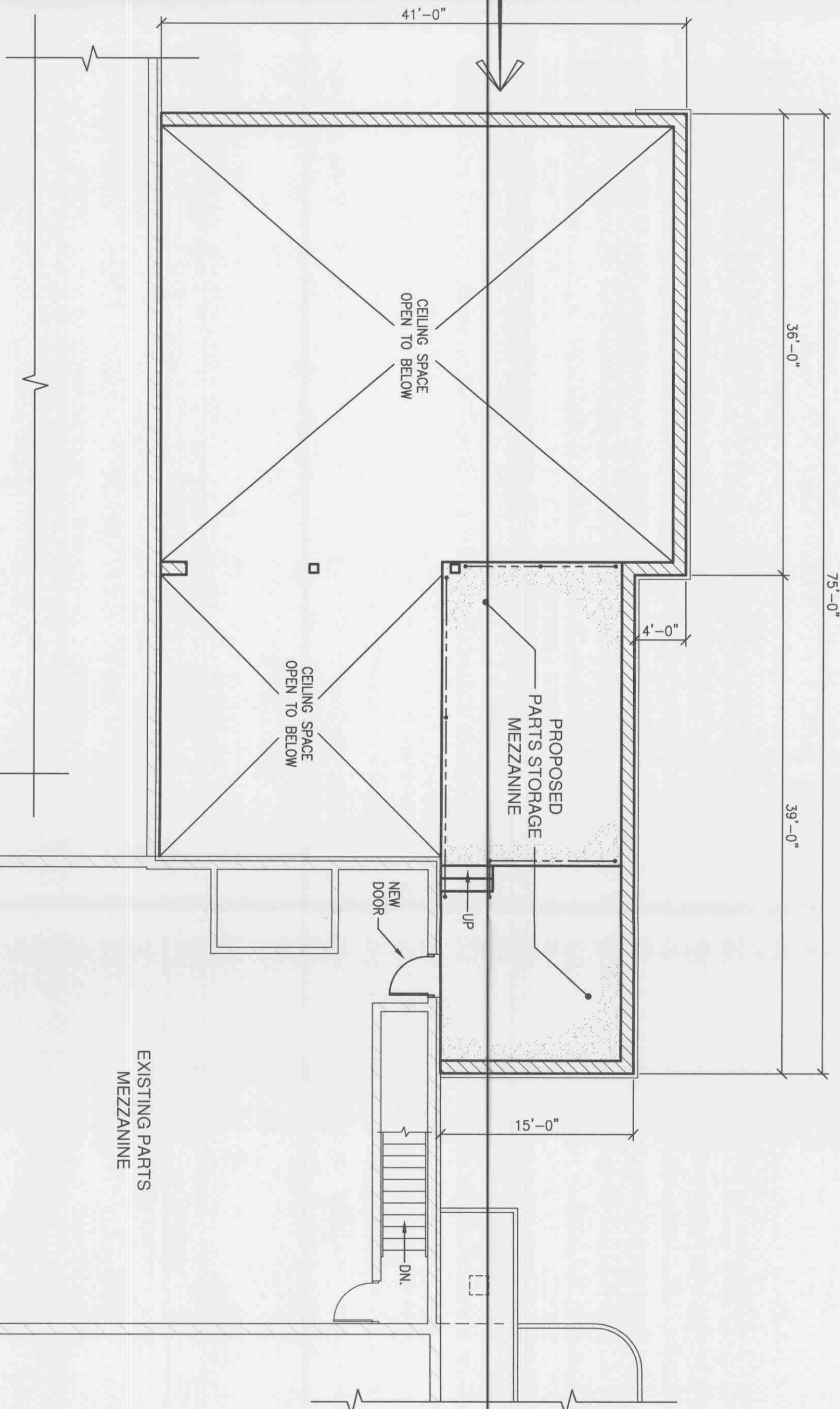


SOUTH ELEVATION - PROPOSED ADDITION

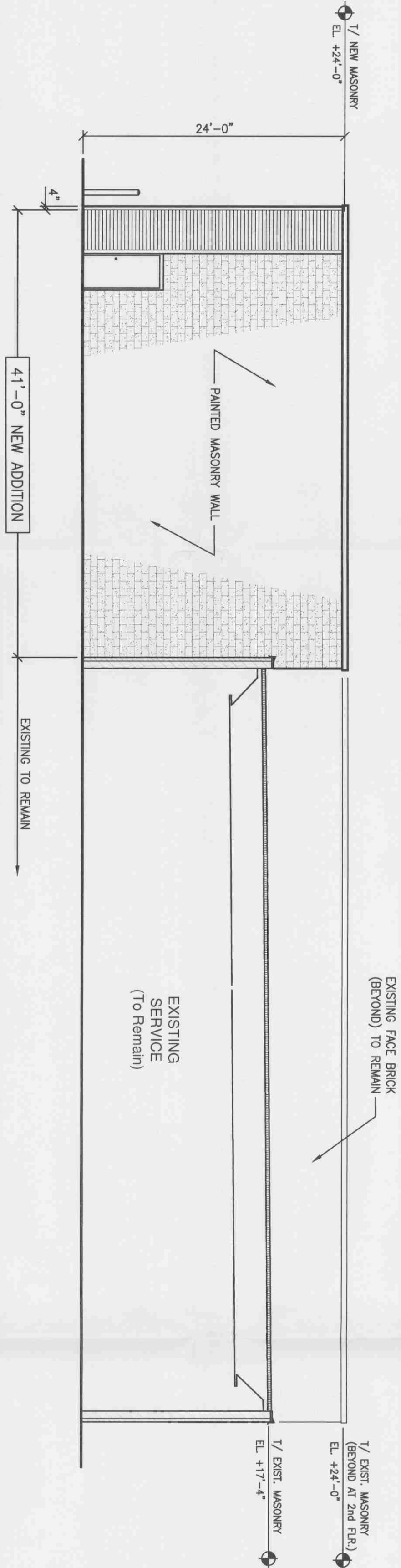
1/8" = 1'-0"

**PROPOSED
COMMERCIAL
VEHICLE SERVICE
ADDITION**
1st Floor = 2,545 s.f.
2nd Floor = 590 s.f.



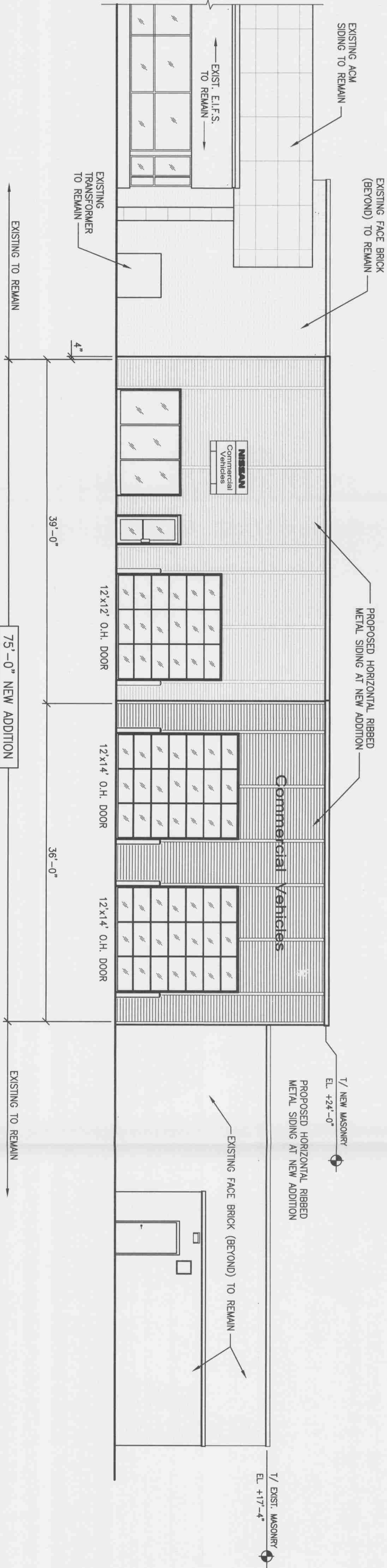
PARTIAL EXISTING 2nd FLOOR PLAN with PROPOSED ADDITION

1/8" = 1'-0"



NORTH ELEVATION - PROPOSED ADDITION

1/8" = 1'-0"



PARTIAL EXISTING EAST ELEVATION with PROPOSED ADDITION

1/8" = 1'-0"

COPYRIGHT © 2009
E. ANTHONY, INC.
All rights reserved. No part of this publication may be reproduced, stored in a retrieval system, or transmitted, in any form or by any means, electronic, mechanical, photocopying, recording, or by any information storage and retrieval system, without permission in writing from E. Anthony, Inc.

Rev	Date	Description
A	11/18/09	SITE DEVELOPMENT REVIEW

Project No.	29-009
Date	11/18/09
Sheet No.	A2.0

Drawing Title

**PROPOSED
2nd FLOOR PLAN and
EXTERIOR ELEVATIONS**

Service Addition to
Orland Park NISSAN
8550 w. 159th Street
Orland Park, IL 60462

Consultants

E. ANTHONY, INC.
Complete Construction Services
18521 Spring Creek Drive, Unit F Tinley Park, IL 60477
Ph: 708.802.8230 Fax: 708.802.8233