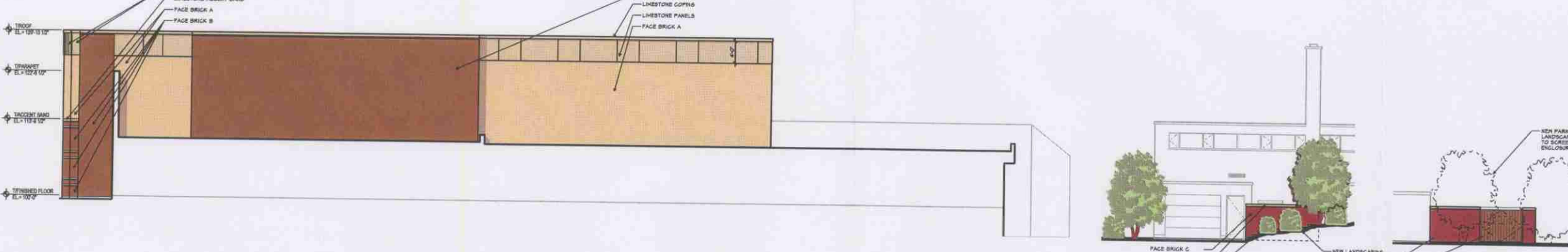




1 NORTH ELEVATION  
A5-1(A) SCALE: 1/8"=1'-0"



2 EAST ELEVATION  
A5-1(A) SCALE: 1/8"=1'-0"



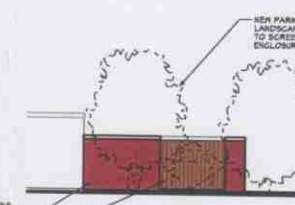
3 SOUTH ELEVATION  
A5-1(A) SCALE: 1/8"=1'-0"



6 WEST ELEVATION  
A5-1(A) SCALE: 1/8"=1'-0"

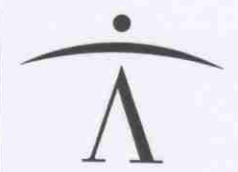


4 TRASH ENCLOSURE - EAST ELEVATION  
A5-1(A) SCALE: 1/8"=1'-0"



5 TRASH ENCLOSURE - NORTH ELEVATION  
A5-1(A) SCALE: 1/8"=1'-0"

- GENERAL NOTES**
1. FACE BRICK A MATCHES THE EXISTING COMMONS BRICK IN COLOR. TO BE MODULAR, RUNNING BOND.
  2. FACE BRICK B MATCHES THE EXISTING CHURCH BRICK IN COLOR. TO BE MODULAR, RUNNING BOND.
  3. FACE BRICK C MATCHES THE EXISTING GARAGE BRICK IN COLOR. TO BE MODULAR, RUNNING BOND.
  4. LIMESTONE TO BE BUFF, SMOOTH.
  5. ALL RINDORS TO BE PREFINISHED ALUMINUM.



**newmanArchitecture**  
1730 Park Street, Suite 115, Naperville, Illinois 60563-2411  
(630) 420-1000 FAX (630) 420-1987 info@newmanArchitecture.com

Participating Consultants:



Project Name:  
**CONSTRUCTION DOCUMENTS  
ST. MICHAEL PARISH  
CENTER**

14327 HIGHLAND AVENUE  
ORLAND PARK, IL 60462

FOR THE ARCHDIOCESE  
OF CHICAGO

Architect's Certification:

License: Illinois Professional Design Firm  
License No. 184-000549  
Expires: 4/30/08  
License: Illinois Registration No. \_\_\_\_\_  
Expires: \_\_\_\_\_

Drawing Title:  
**EXTERIOR ELEVATIONS -  
OPTION A**

Issue/Revision:

No.	Date	Description
-	10/17/07	Village Review

Project No.: 07001 Date: 10/17/07

**A5-1(A)**