

SITE GRADING PLAN

LEGAL DESCRIPTION

LOT 52 AND 53 IN OLDE MILL PHASE III, A SUBDIVISION OF PART OF THE SOUTHWEST QUARTER OF THE SOUTHEAST QUARTER OF SECTION 29, TOWNSHIP 36, NORTH, RANGE 12 EAST OF THE THIRD PRINCIPAL MERIDIAN, ACCORDING TO THE PLAT THEREOF RECORDED AUGUST 28, 2012 AS DOCUMENT NUMBER 122412922 AND CERTIFICATE OF CORRECTION RECORDED SEPTEMBER 14, 2012 AS DOCUMENT NUMBER 12258050, IN COOK COUNTY, ILLINOIS.

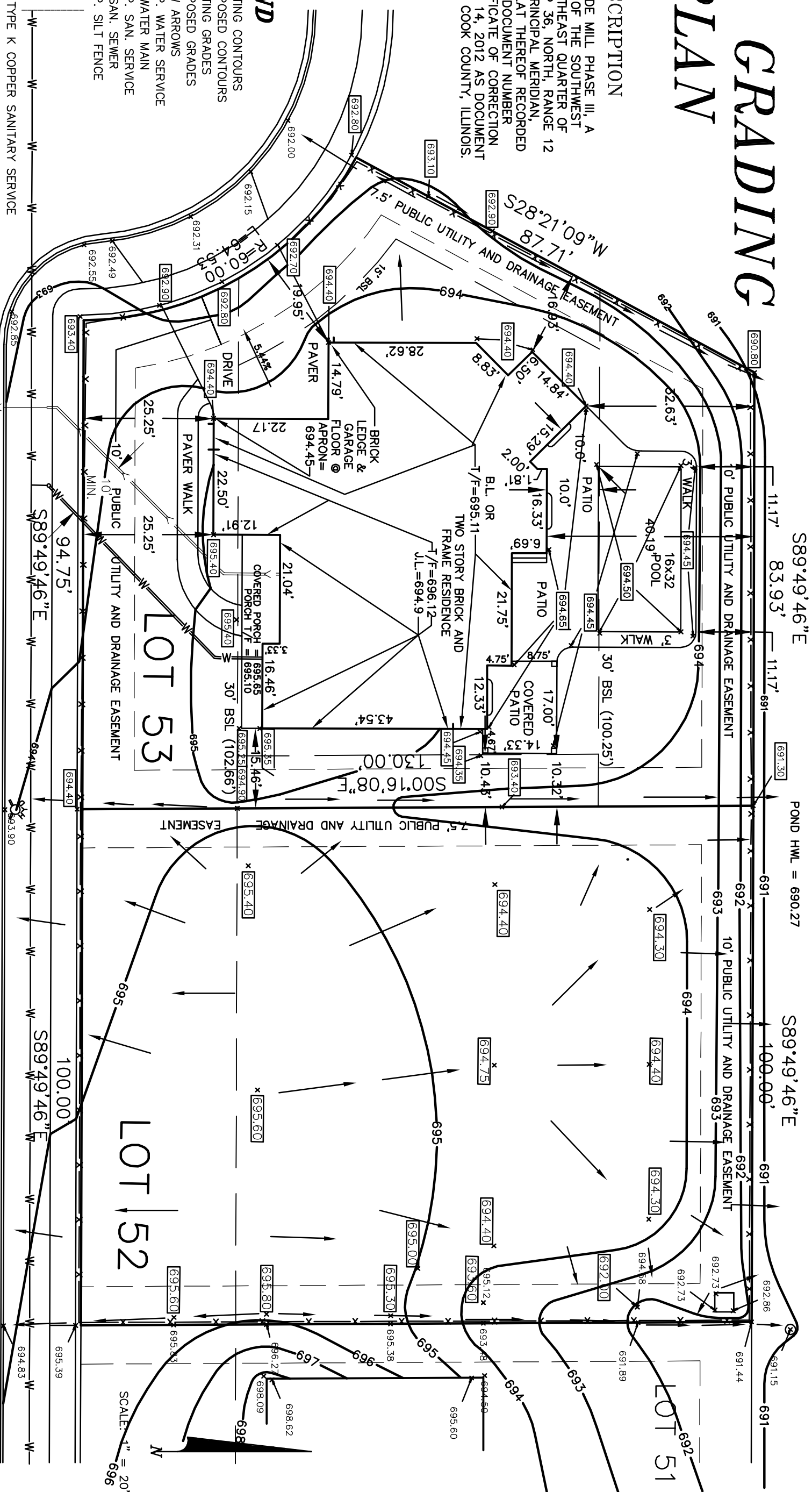
- ### LEGEND
- EXISTING CONTOURS
 - PROPOSED CONTOURS
 - XXX.XX = EXISTING GRADES
 - XXX.XX = PROPOSED GRADES
 - FLOW ARROWS
 - PROP. WATER SERVICE
 - EX. WATER MAIN
 - PROP. SAN. SERVICE
 - EX. SAN. SEWER
 - PROP. SILT FENCE

WATER SERVICE TO BE 1" TYPE K COPPER SANITARY SERVICE TO BE 6" DIA. AT 1.00% MIN. SLOPE. MATERIAL PER VILLAGE CODE.

EROSION CONTROL TO BE APPLIED PER THE ILLINOIS PROCEDURES FOR URBAN SOIL EROSION AND SEDIMENTATION CONTROL MANUAL LATEST EDITION.

LINCOLNWAY ENGINEERING AND LAND SURVEYING LTD. AN ILLINOIS LICENSED PROFESSIONAL DESIGN FIRM, LAND SURVEYING AND PROFESSIONAL ENGINEERING CORPORATION, HAS PREPARED THIS PLAN, SURVEY AND SITE ENGINEERING DATA COMPILED FROM PLANS IN THE PUBLIC RECORD. LINCOLNWAY ENGINEERING AND LAND SURVEYING CORPORATE LICENSE EXPIRES APRIL 30, 2017.

DATED: 7/27/15
 BY ILLINOIS LICENSED PROFESSIONAL ENGINEER, MATTHEW D. DUNN
 ILLINOIS PROFESSIONAL ENGINEER # 47326, MY LICENSE EXPIRES 11/30/2015



DEER TRAIL COURT
 60' RIGHT-OF-WAY

NO. 150713 ORDERED BY: SPYGLASS BUILDERS
 COPYRIGHT © 2014 LINCOLNWAY ENGINEERING AND LAND SURVEYING LTD.
LINCOLNWAY
 ENGINEERING AND LAND SURVEYING LTD.
 LAND SURVEYING • PLANNING
 ENGINEERING • PERMITS
 LAND DEVELOPMENT SCIENCES AND CONSULTING
 846 REGENT STREET, NEW LENOX, IL. 60451
 PHONE (630)301-1325