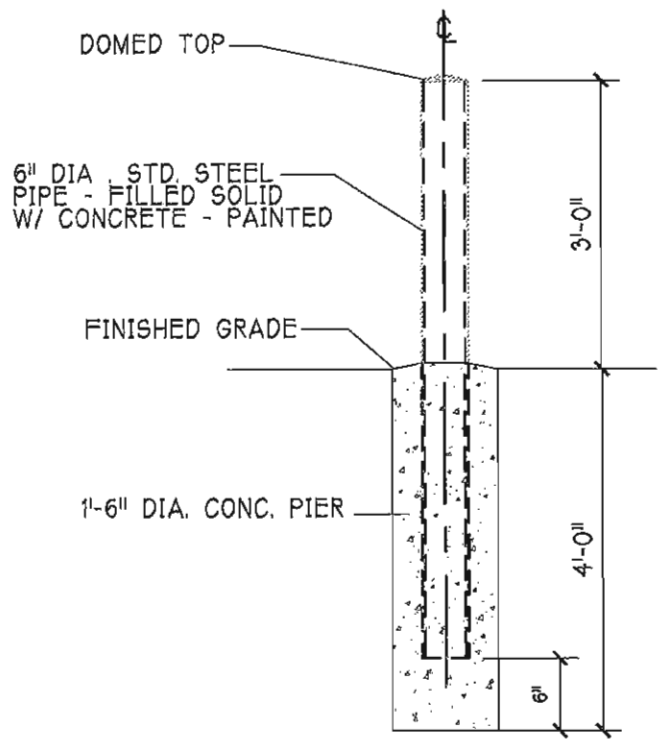
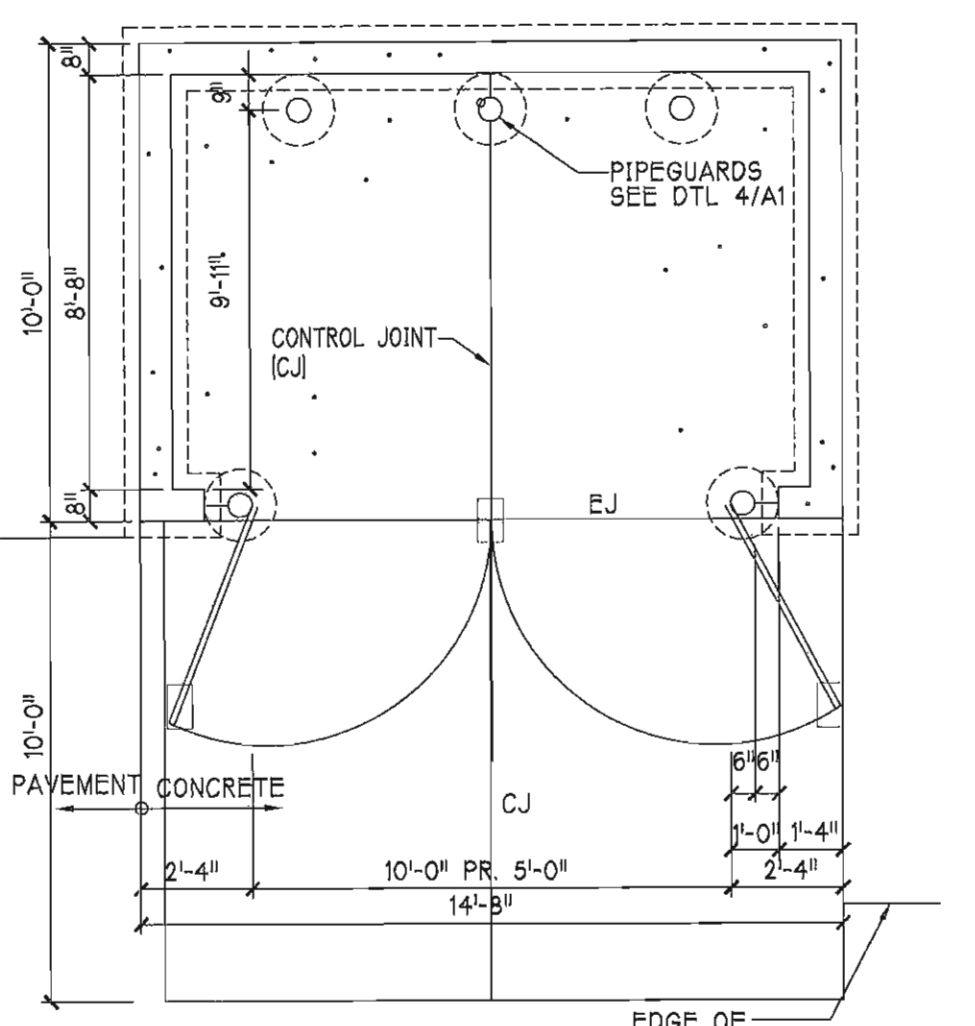


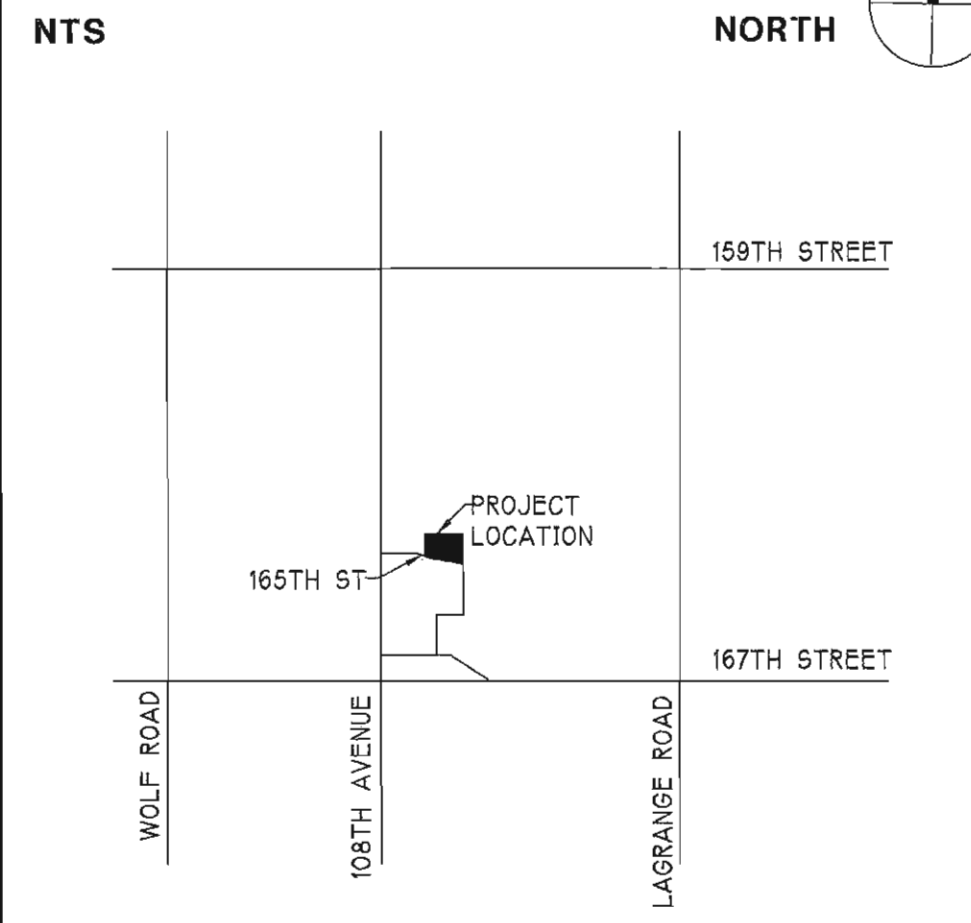
2 TRASH ENCLOSURE 1/4" = 1'-0"



4 PIPE BOLLARD NTS

REFER TO CIVIL ENGINEERING DRAWINGS FOR SITE PLAN (GEOMETRICS, GRADING, & UTILITIES) ALL WORK SHALL COMPLY WITH THE ILLINOIS ACCESSIBILITY CODE & THE AMERICANS WITH DISABILITIES ACT. ARCHITECT HAS NOT BEEN CONTRACTED FOR SITE DESIGN, AND HAS NO RESPONSIBILITY FOR ITS COMPLIANCE WITH APPLICABLE CODES.

LOCATION PLAN



CODES

ARCHITECTURAL:	INTERNATIONAL BUILDING CODE 2006
MECHANICAL:	INTERNATIONAL MECHANICAL CODE 2006
PLUMBING:	STATE OF ILLINOIS PLUMBING
ELECTRICAL:	NEC 2005
FIRE PROTECTION:	INTERNATIONAL FIRE CODE 2006
ENERGY CODE:	INTERNATIONAL ENERGY CODE 2006
HANDICAP:	ILLINOIS ACCESSIBILITY CODE (IAC) AMERICANS WITH DISABILITIES ACT (ADA)

NOTE: ALL WORK SHALL COMPLY WITH THE IAC & ADA

ALTERNATES

A1 WINDOW BLINDS (ADD)

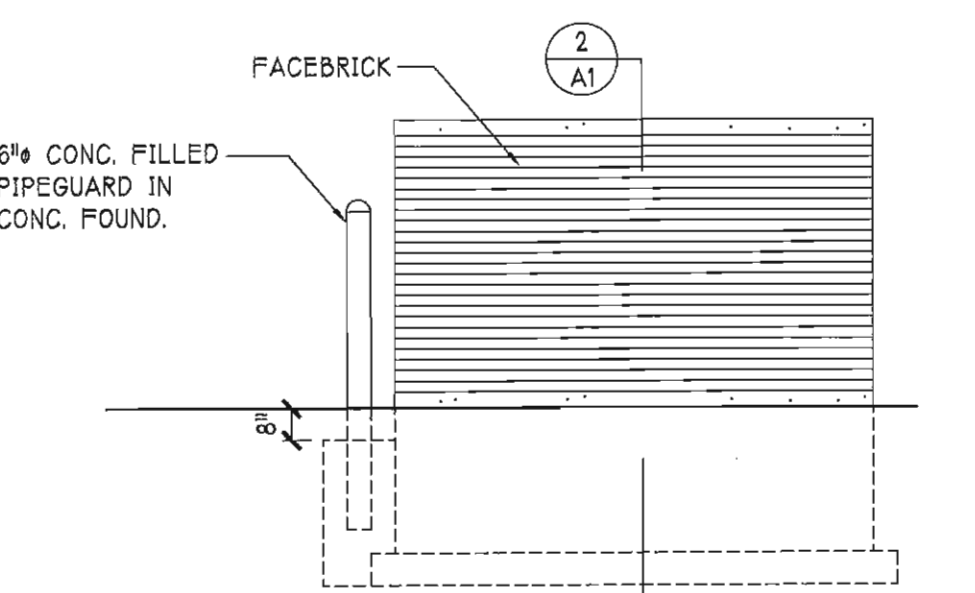
BUILDING DATA

CONSTRUCTION TYPE:	IIIB
BUILDING AREA:	7,987 SF
BUILDING HEIGHT:	28'-4" (PEAK)
OCCUPANCY USE:	B - BUSINESS

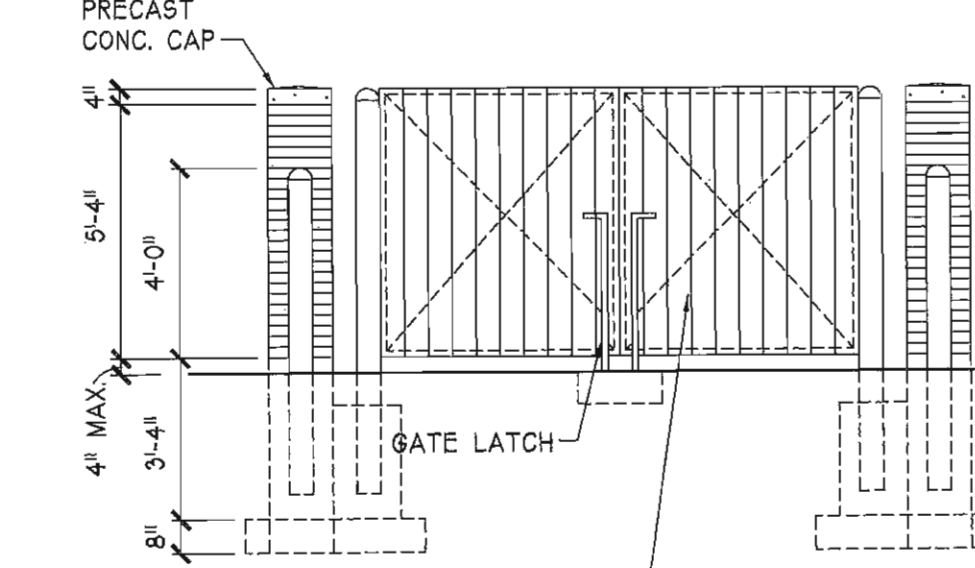
DRAWING INDEX

SHEET DESCRIPTION	NO.
A1 SITE KEY PLAN & TRASH ENCLOSURE	1
A2 BLDG FLOOR PLAN & DETAILS	2
A3 DETAILS	3
A4 EXTERIOR ELEVATIONS & DETAILS	4
A5 DETAILS	5
A6 BUILDING SECTIONS & DETAILS	6
S1 FOUNDATION PLAN	7
S2 ROOF & FLOOR FRAMING PLANS	8
S3 DETAILS	9
S4 MASONRY WALL REINFORCING	10
P1 PLUMBING & FIRE PROTECTION FLOOR PLANS	11
M1 MECHANICAL FLOOR PLANS	12
E1 LIGHTING & POWER FLOOR PLANS	13
SP1 SPECIFICATIONS	14

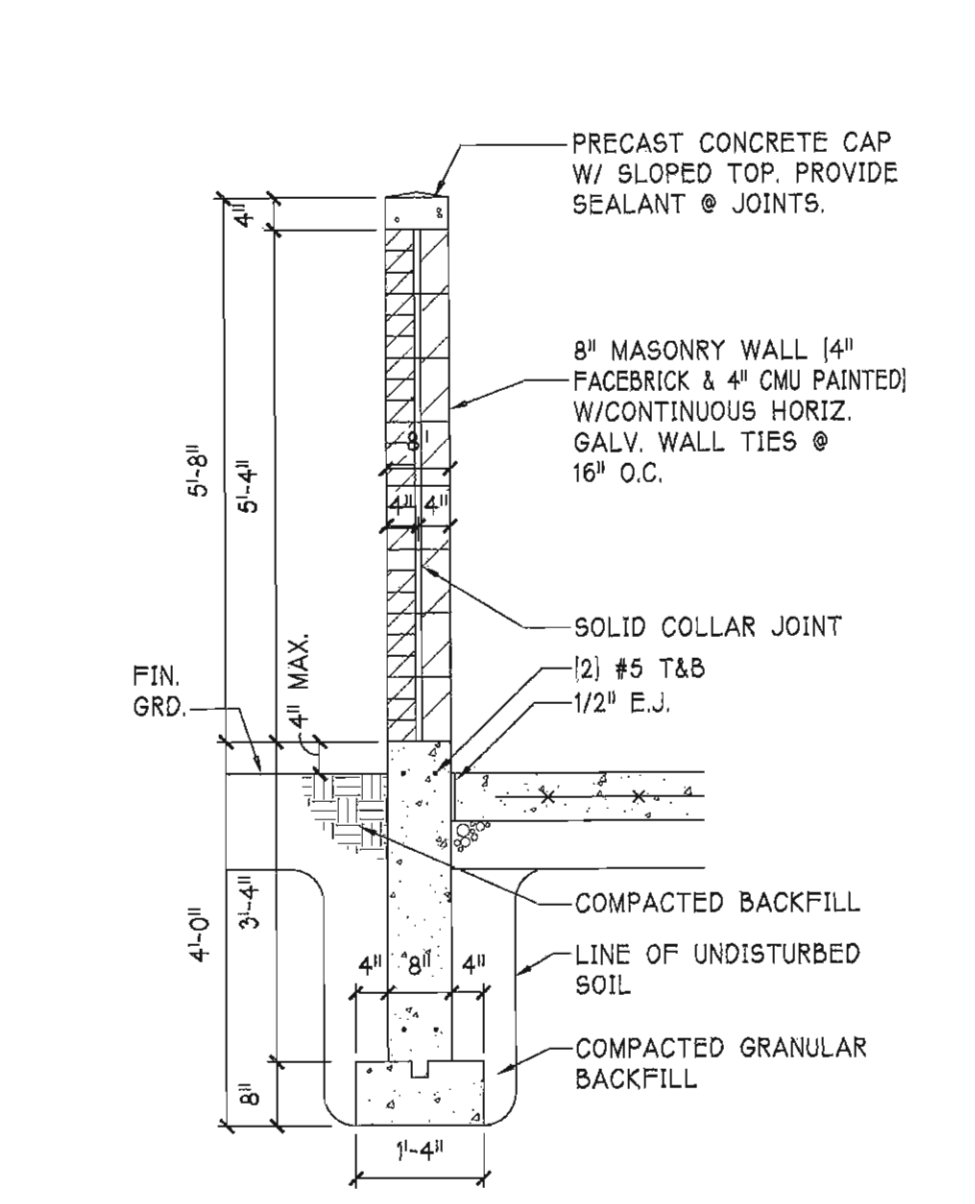
PLAN NORTH



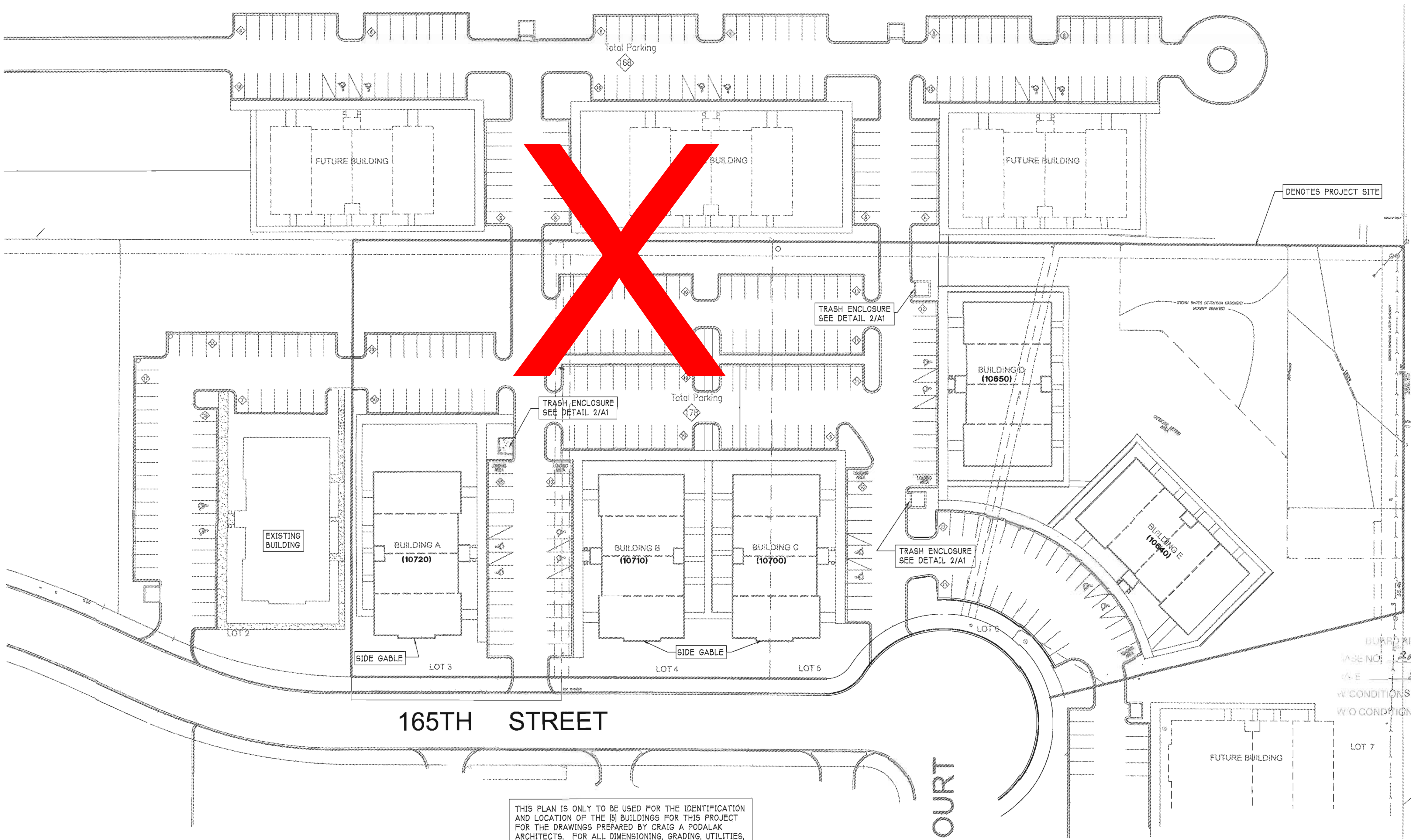
NORTH/ SOUTH ELEVATIONS



EAST ELEVATION



3 SECTION 1/2" = 1'-0"



1 SITE KEY PLAN 1" = 40'-0"

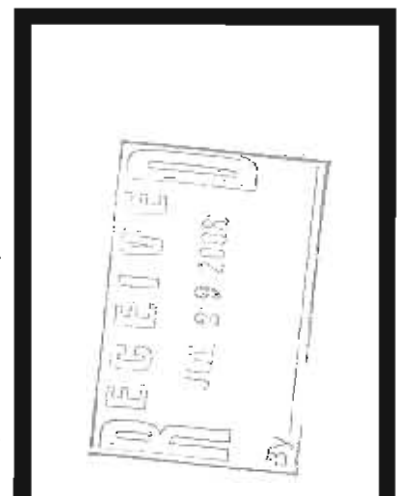
THIS PLAN IS ONLY TO BE USED FOR THE IDENTIFICATION AND LOCATION OF THE (5) BUILDINGS FOR THIS PROJECT FOR THE DRAWINGS PREPARED BY CRAIG A. PODALAK ARCHITECTS. FOR ALL DIMENSIONING, GRADING, UTILITIES, ETC. REFER TO THE CIVIL ENGINEERING DRAWINGS.

BUILDING ADDRESSES SHOWN TO BE CONFIRMED WITH POSTAL SERVICE

STATUS PLOT
NOT FOR CONSTRUCTION



CRAIG A. PODALAK ARCHITECTS
12410 S. NASHVILLE AVE.
PALOS HEIGHTS, IL 60463
708 / 389-3333



GLEN OAKS PHASE 5 OFFICE PARK
10640- 10720 W 165TH STREET
ORLAND PARK, ILLINOIS

PROJECT NO. 0816
DATE 7-15-08

DRAWN BY RD
CHECKED BY CAP
FILE 0816A1

A1
1 OF 14

COPYRIGHT © 2008 CRAIG A. PODALAK RESERVES COPYRIGHT & OTHER RIGHTS RESTRICTING THESE DOCUMENTS TO THE ORIGINAL SITE OR PURPOSE FOR WHICH THEY WERE PREPARED. REPRODUCTIONS, CHANGES, OR ASSIGNMENTS ARE PROHIBITED.

BOARD APPROVED
BASE NO. 2008-0337
DATE 8-4-08
W/ CONDITIONS
W/O CONDITIONS