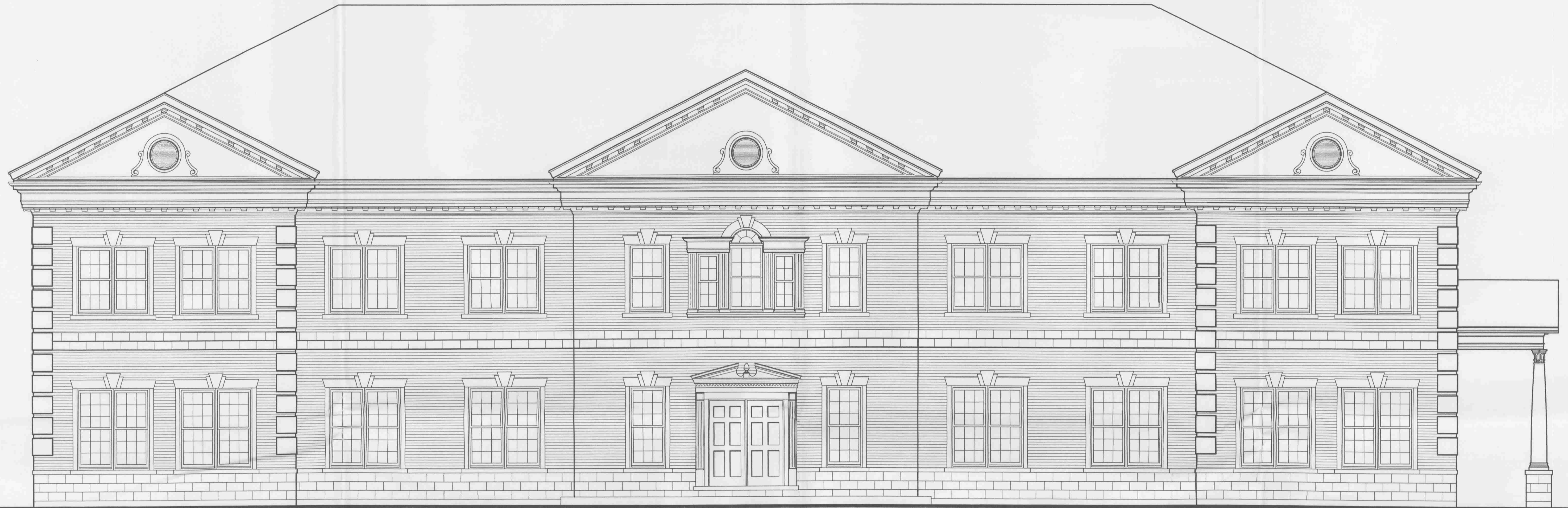


REVISIONS
8-22-07

PARK CORNERS II
ORLAND PARK, IL.

14834 Town Center Dr.
Lockport, Illinois 60441

ALSON ASSOCIATES ARCHITECTS
Tel (708)301-6111
Fax (708)301-2503



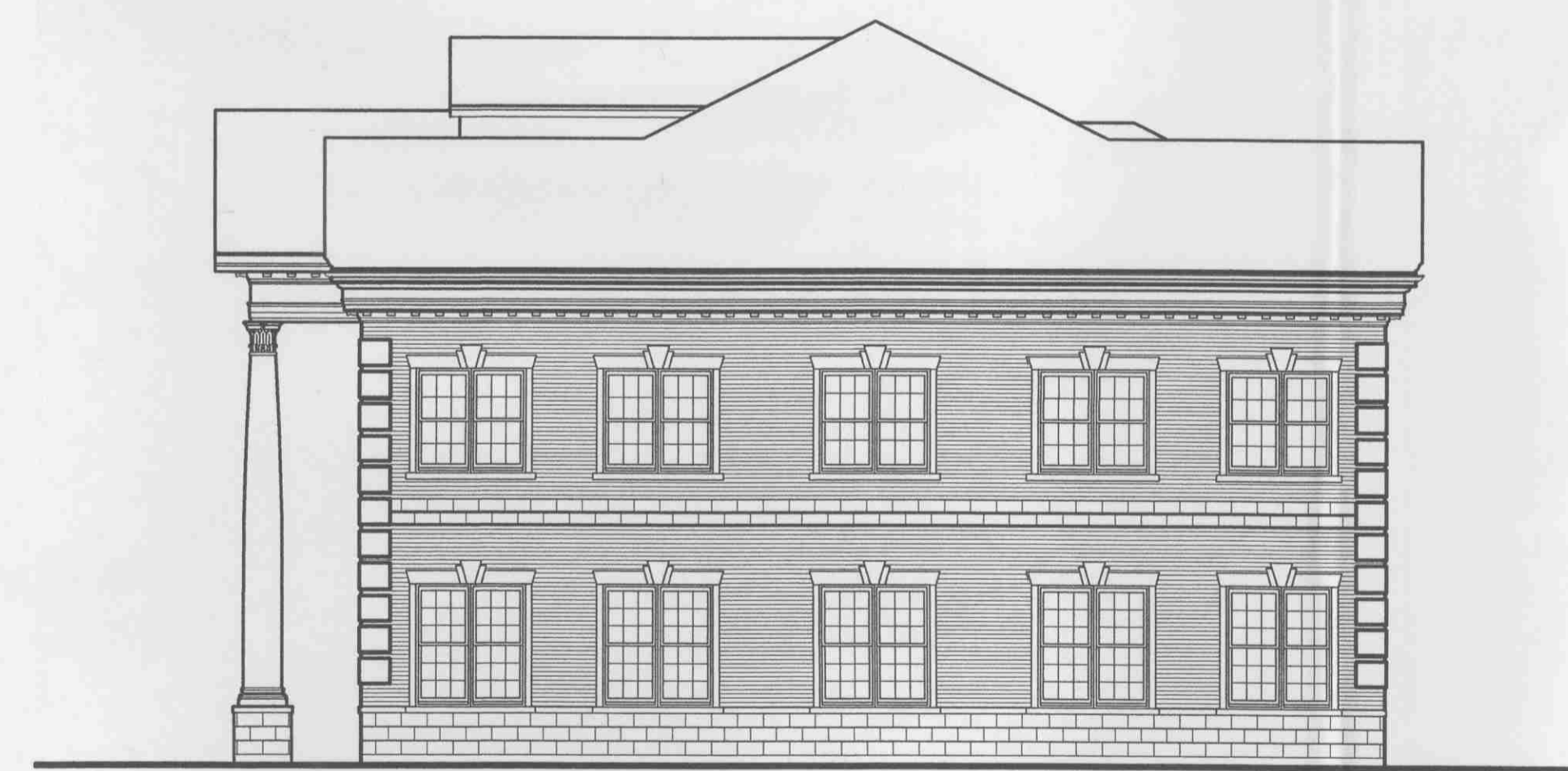
EAST ELEVATION (REAR)

1/4"=1'-0"



NORTH ELEVATION (LEFT)

1/8"=1'-0"



SOUTH ELEVATION (RIGHT)

1/8"=1'-0"

APP'D: W.K.O.
DRAWN: P.B.
DATE: 05.30.07
PROJ NO: 23276
PREV NO: ()

SHEET NUMBER
OF